

**Bissell®**

**PROHEAT 2X®  
USER GUIDE**



1383 SERIES

# IMPORTANT SAFETY INSTRUCTIONS

## READ ALL INSTRUCTIONS BEFORE USING YOUR DEEP CLEANER.

When using an electrical appliance, basic precautions should be observed, including the following:

### **⚠️ WARNING**

#### **TO REDUCE THE RISK OF FIRE, ELECTRIC SHOCK, OR INJURY:**

- » Connect to a properly grounded outlet only. See grounding instructions. Do not modify the 3-prong grounded plug.
- » Do not leave appliance when it is plugged in. Unplug from outlet when not in use and before servicing.
- » Use indoors only.
- » Do not allow to be used as a toy. Close attention is necessary when used by or near children.
- » Do not use for any purpose other than described in this User's Guide. Use only manufacturer's recommended attachments.
- » Do not use with damaged cord or plug. If appliance is not working as it should, or has been dropped, damaged, left outdoors, or dropped into water, have it repaired at an authorized service center.
- » Always install float before any wet pick-up operation.

- » Do not pull or carry by cord, use cord as a handle, close a door on cord, or pull cord around sharp edges or corners. Do not run appliance over cord. Keep cord away from heated surfaces.
- » Do not unplug by pulling on cord. To unplug, grasp the plug, not the cord.
- » Do not handle plug or appliance with wet hands.
- » Do not put any object into openings. Do not use with any opening blocked; keep openings free of dust, lint, hair, and anything that may reduce air flow.
- » Keep hair, loose clothing, fingers, and all parts of body away from openings and moving parts.
- » Turn off all controls before plugging or unplugging appliance.
- » Use extra care when cleaning on stairs.
- » Do not use to pick up flammable or combustible materials (lighter fluid, gasoline, kerosene, etc.) or use in areas where they may be present.
- » Do not use appliance in an enclosed space filled with vapors given off by oil base paint, paint thinner, some moth proofing substances, flammable dust, or other explosive or toxic vapors.
- » Do not use to pick up toxic material (chlorine bleach, ammonia, drain cleaner, etc.).
- » Do not pick up anything that is burning or smoking, such as cigarettes, matches, or hot ashes.
- » Use only BISSELL cleaning products intended for use with this appliance to prevent internal component damage. See the Cleaning Fluid section of this guide.
- » Unplug before connecting TurboBrush Tool.
- » Do not immerse. Use only on dry surfaces or surfaces moistened by the cleaning process.
- » Keep appliance on a level surface.
- » Do not carry the appliance while in use.

## SAVE THESE INSTRUCTIONS FOR FUTURE USE

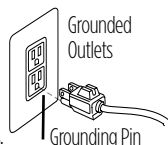
This model is for household use only. Commercial use of this unit voids the manufacturer's warranty.

### **⚠️ WARNING**

Improper connection of the equipment-grounding conductor can result in a risk of electrical shock. Check with a qualified electrician or service person if you aren't sure if the outlet is properly grounded. **DO NOT MODIFY THE PLUG.** If it will not fit the outlet, have a proper outlet installed by a qualified electrician. This appliance is designed for use on a nominal 120-volt circuit, and has a grounding attachment plug that looks like the plug in the illustration. Make certain that the appliance is connected to an outlet having the same configuration as the plug. No plug adapter should be used with this appliance.

### **GROUNDING INSTRUCTIONS**

This appliance must be connected to a grounded wiring system. If it should malfunction or break down, grounding provides a safe path of least resistance for electrical current, reducing the risk of electrical shock. The cord for this appliance has an equipment-grounding conductor and a grounding plug. It must only be plugged into an outlet that is properly installed and grounded in accordance with all local codes and ordinances.



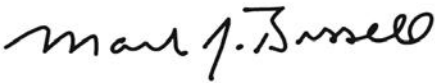
# Thanks for buying a BISSELL deep cleaner

We're glad you purchased a BISSELL deep cleaner. Everything we know about floor care went into the design and construction of this complete, high-tech home cleaning system.

Your BISSELL deep cleaner is well made, and we back it with a limited two-year warranty. We also stand behind it with a knowledgeable, dedicated Consumer Care department, so, should you ever have a problem, you'll receive fast, considerate assistance.

My great-grandfather invented the floor sweeper in 1876. Today, BISSELL is a global leader in the design, manufacture, and service of high quality homecare products like your BISSELL deep cleaner.

Thanks again, from all of us  
at BISSELL.



Mark J. Bissell  
Chairman & CEO

Safety Instructions.....	2
Product View.....	4
Assembly .....	5
Operations .....	6-12
Maintenance & Care .....	13-15
Troubleshooting .....	16
Replacement Parts .....	17
Accessories .....	18
Warranty.....	19
Consumer Care.....	19
Product Registration.....	20

## TIPS

- » Deep cleaning stairs and high-traffic areas on a regular basis helps prolong carpet life.
- » Check upholstery stuffing before cleaning. Colored stuffing may bleed through the fabric when it becomes wet.
- » Before turning off the machine, suction up clean water to thoroughly rinse out the interior of the flex hose. Then, lift the cleaning tool and point it upwards to drain any remaining water into the dirty water/ collection tank.

# Product View



- |   |                       |    |                                  |
|---|-----------------------|----|----------------------------------|
| 1 | Spray Trigger         | 10 | Tank Carry Handle                |
| 2 | Upper Handle          | 11 | 2-in-1 Clean Water & FormulaTank |
| 3 | Extra Long Power Cord | 12 | Easy To Remove Nozzle            |
| 4 | Power Switch          | 13 | EdgeSweep® Brushes               |
| 5 | Heater Switch         | 14 | Lower Base                       |
| 6 | Flex Hose             | 15 | Upper Hose Rack                  |
| 7 | Easy Carry Handle     | 16 | Hose Secure Latch                |
| 8 | Heat Indicator Light  | 17 | Lower Hose Rack                  |
| 9 | ReadyTools™ Dial      | 18 | Detent Pedal                     |

# Assembly

Your deep cleaner comes in four, easy to assemble components:

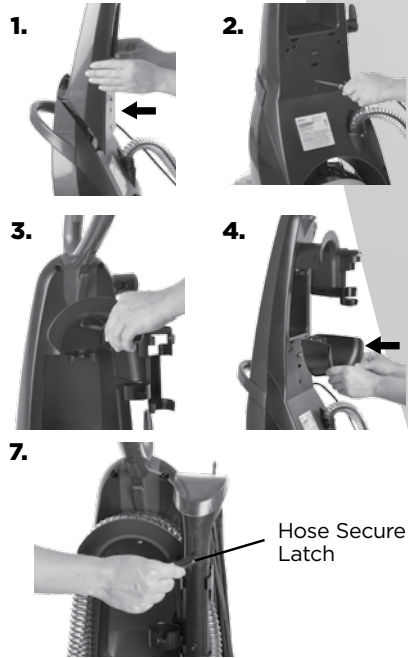
- Upper Handle
- Lower Handle
- Upper Hose Rack
- Lower Hose Rack

The only thing you will need to assemble your cleaner is a Phillips head screwdriver.

1. Slide upper handle onto lower handle.
2. Screw 3 screws into the marked holes.
3. Place upper hose rack onto back of upper handle, and secure with screw.
4. Place lower hose rack onto back of upper handle by pushing in and sliding down until it snaps into place.
5. Snap tools into the tool caddy.
6. Wrap power cord and flex hose.
7. Keep flex hose snugly in place by using the hose secure latch.

PROheat 2X assembly is now complete.

**⚠️ WARNING**  
Do not plug in your deep cleaner until you are familiar with all instructions and operating procedures.



# Operations

## Cleaning fluid

Keep plenty of genuine BISSELL 2X formula on hand so you can clean and protect whenever it fits your schedule. Always use genuine BISSELL deep cleaning formulas. Non-BISSELL cleaning solutions may harm the machine and will void the warranty.

**⚠️ WARNING**  
To reduce the risk of fire and electric shock due to internal component damage, use only BISSELL cleaning fluids intended for use with the deep cleaner.

	Professional Deep Cleaning	Pet Stain & Odor	Deep Clean & Protect	Allergen Cleansing	Hard Floor Solutions	Stain Pretreat
	78H6-3	99K5-2	62E5-2	89K5-2	56L9	4001
Best for	Clean all other formulas	Removes tough pet stains and contains patented odor removal technology	Deep cleans carpets and protects from future stains with Scotchgard™ Protector	Helps remove pet & pollen allergens	For use with the Bare Floor Tool (select models)	Pretreat to penetrate and loosen tough stains
2X Concentrated	X	X	X	X	X	
Scotchgard™ Protection	X	X	X			

\*ONLY BISSELL Protects from future stains with Scotchgard™ Protector

# Operations

## Special Features

Your BISSELL PROheat 2X deep cleaner is a home cleaning system that uses the power of heat, brushes, and cleaning formula to get the deep down dirt for a maximum clean. Not only does it come with several unique features, it has been designed with you, the customer, in mind.

### Built-in-Heater feature

BISSELL PROheat 2X models all feature a patented built-in heater which will heat the hot tap water you put in up to 25 degrees hotter to safely optimize cleaning effectiveness. The heater will never allow the temperature to exceed 190°F. The heater switch on the front of the machine controls the heater so you have the option to turn off the heat if you are cleaning delicate wool or oriental rugs.

### 2-in-1 Clean Water & Formula Tank

Our 2-in-1 tank full capacity system is designed with a heavy duty bladder inside for clean water. As you clean, dirty water pulled out of your carpets will collect around the outside of the bladder so that clean and dirty water are always kept separate. This allows you to only carry one tank to and from the sink for emptying and filling.

### ReadyTools™ Dial

This provides either floor cleaning or above floor cleaning with the turn of a knob. Choose "TOOLS" setting for stairs, upholstery, and hard to reach areas and "FLOOR CLEANING" for carpets, area rugs and bare floors.

## Before you clean

1. Move furniture to another area if cleaning an entire room (optional).
2. Pick up all loose dirt, debris, and pet hair before deep cleaning. If you're cleaning just a small area of carpeting or less than a whole room, the ProHeat 2X Deep Cleaner may be used to vacuum the area before deep cleaning. If so, be sure to keep the red filter screen (in the 2-in-1 tank lid) cleaned of lint so that suction is maintained. When you're done, clear the red filter screen and then rinse both the dirty water and the clean solution tank (inside the flexible bladder) with warm water before starting the deep cleaning process.
3. Plan your cleaning route to leave an exit path. It is best to begin cleaning in the corner farthest from your exit.

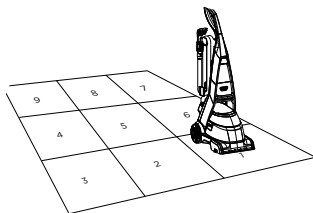
## ⚠️ WARNING

Do not plug in your cleaner until you have completely assembled it per the above instructions and are familiar with all instructions and operating procedures.



## ATTENTION

Some Berber carpets have a tendency to fuzz with wear. Repeated strokes in the same area with an ordinary vacuum or deep cleaner may aggravate this condition. Please see Stain Removal instructions on page 10.



# Operations

## 4. Pretreating (optional)

Pretreating is recommended to improve cleaning effectiveness for heavily soiled carpet in high traffic areas such as entryways and hallways.

### BISSELL Stain PreTreat

- a. Spray the BISSELL Stain PreTreat formula onto heavy traffic areas, soiled areas, or stains.
- b. Allow to penetrate for at least 3 minutes.
- c. Clean as normal, using the BISSELL PROheat 2X machine on the high traffic setting, following the instructions below.



## Carpets cleaning

1. Fill the 2-in-1 Water Tank. Remove the tank from the base of the machine by lifting up the tank carry handle. Carry like a bucket to the sink.

a. Unlatch the top of the tank from the bottom by lifting up on the tank latch located on the back of the tank.

b. Remove the top of the tank by lifting up on the handle.

Note how the lip on the top tank separates from the groove in the bottom tank. This placement is important when putting the tank back together.

c. The measuring cup provided holds 2.5oz when filled to the fill line. Using the measuring cup provided, pour 5oz of BISSELL 2X formula into the heavy duty bladder. Fill the rest of the heavy duty bladder with hot tap water (140°F/60°C MAX). **DO NOT BOIL OR MICROWAVE WATER.**

**NOTE: Always use genuine BISSELL 2X formulas to maximize cleaning and for the safety of your machine.**

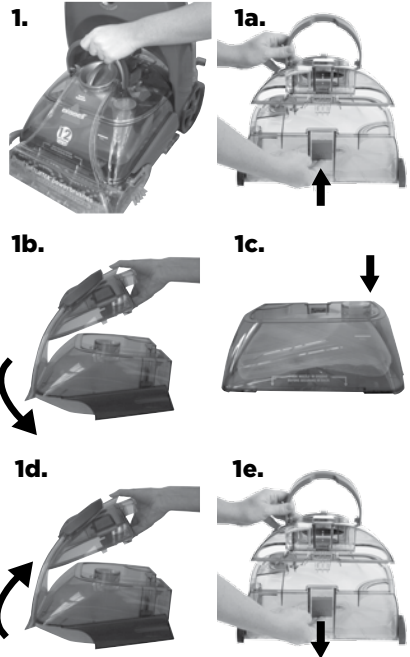
d. Leaving the filled bottom of the tank on a flat surface, only maneuver the top of the tank. To attach the top part of the tank to the bottom, carefully hook the lip on the top tank into the groove on the bottom tank.

e. Fasten tanks together by securing the latch in the back.

**NOTE: Remember to secure the tank latch in the back and test to make sure it is secure before picking up the tank.**

## WARNING

To reduce the risk of fire and electric shock due to internal component damage, use only BISSELL cleaning fluids intended for use with the deep cleaner.



# Operations

2. Set ReadyTools Dial to the floor cleaning setting.
3. Plug into a proper outlet and turn the power and heater switches to the ON ( I ) position. Allow 1 minute for the built-in heater to warm-up before cleaning. The PROheat 2X will be fully warmed and will provide optimal performance after a minute of continuous heated cleaning.
4. Cleaning Strokes. While pressing the trigger, make one slow forward wet pass and another one back. **Caution: Do not overwet.** Take care not to run over loose objects or edges of area rugs. Stalling brush may result in premature belt failure.

**NOTE: Your machine is equipped with a circuit breaker that will automatically shut off the brush if a large or loose object is caught in the brush roll. If that happens, be sure to unplug your machine, remove the foreign object, and then plug the machine back in to reset the circuit breaker.**

Release the trigger and make one slow forward and backward pass over the same area to remove any residual dirty water and aid in drying. Repeat cleaning passes until solution being pulled up appears clean. Continue passes without pressing the trigger until you can't see any more water being pulled up.

5. Remove the tank from the base of the machine by lifting up on the tank carry handle. Carry like a bucket to a utility sink or outside where you will dispose of the dirty water.

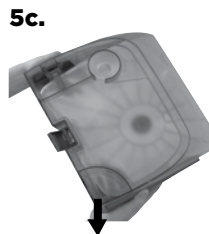
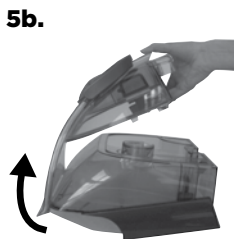
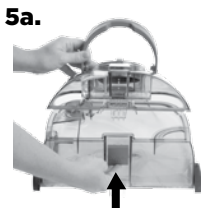
- a. Unlatch the top of the tank from the bottom by lifting up on the tank latch located on the back of the tank.
- b. Remove the top of the tank by lifting up on the handle.

Note how the lip on the top tank separates from the groove in the bottom tank. This placement is important when putting the tank back together.

- c. Lift the bottom portion of the tank; pour out dirty water in the sink through the triangular shaped opening in the corner of the tank.

**NOTE: You may notice hair & debris deposits on the carpet or in the tank that were loosened by the cleaning action. This debris should be picked up and thrown away. Check the red lint filter inside the tank for debris and remove before continuing.**

- d. Fill the heavy duty bladder with clean hot tap water and formula, following instructions 1c through 1e on page 7.





# Operations

**NOTE: Remember to secure the tank latch in the back and test to make sure it is secure before picking up the tank. Always check the level of cleaning formula in the formula tank at the same time, and refill as needed.**

**6. Water rinse (recommended).** Rinsing is an optional step that can be done during the cleaning process or after the carpeted area has been completed. Empty the heavy-duty bladder if necessary and refill with hot tap water only. Replace the tank on the machine. Take care to do a forward (wet) stroke by depressing the trigger, and a backward (wet) stroke, followed by a forward and backward (dry) stroke, releasing the trigger. Continue this until the water you see coming up the nozzle is clear. (see page 13 for more machine care tips.)

## Cleaning with attachments

Your PROheat 2X machine comes equipped with a hose and at least one attachment for cleaning stairs, upholstery, and more.

**1. Important!** If using to clean upholstery, check upholstery tags.

**a.** Check manufacturer's tag before cleaning. "W" or "WS" on the tag means you can use your PROheat 2X. If the tag is coded with an "X" or an "S" (with a diagonal stripe through it), or says "Dry Clean Only", do not proceed with any deep cleaning machine. Do not use on velvet or silk. If manufacturer's tag is missing or not coded, check with your furniture dealer.

**b.** Check for colorfastness in an inconspicuous place.

**c.** If possible, check upholstery stuffing. Colored stuffing may bleed through fabric when wet.

**d.** Plan activities to allow upholstery time to dry.

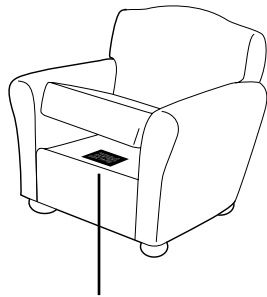
**e.** Pick up any loose dirt, debris and pet hair before deep cleaning.

**2.** Follow the instructions on page 7 for filling the 2-in-1 water and formula tank.

**3.** Set ReadyTools dial to the "TOOLS" setting. This will allow spray and suction from the hose.

**4.** Attach the cleaning tool to the end of the hose.

**5.** Plug in and turn on the power switch and heater (if desired).



Manufacturer's tag

**4.**



# Operations

**NOTE: If your deep cleaner came with a Deep Reach Tool or Stain Trapper Tool, do not follow cleaning instructions below. Instead, follow instructions in next section.**

6. Clean by pressing the trigger to spray solution onto the area to be cleaned. Slowly move the tool back and forth over the soiled surface. Release the trigger to suction soiled water. Continue to clean in the area, working in small sections, until no more dirt can be removed. Rinse (optional) and suction as needed. **Caution: Do no overwet.**
7. Remove and rinse tools in clean, running water. Dry and replace in the tool caddy.
8. It is recommended that you suction clean water from a bowl to rinse out the hose.
9. Before replacing lift end of hose and stretch out to ensure all water is cleared from hose.
10. Wrap flex hose around the tool caddy.
11. Empty 2-in-1 water tank and rinse out, following the instructions on page 8.
12. Return ReadyTools dial to floor setting.

9.



## Deep Reach Tool attachment

**(Select models only)**

1. Follow instructions 1-5 on page 9 under "Cleaning with attachments".
2. Set tool on stain and press the trigger to spray solution onto the area to be cleaned.
3. Slowly move the tool back and forth over the soiled surface, keeping the tool in contact with the carpet.
4. Release trigger and move tool slowly over the soiled area to suction up water and dirt.
5. Continue to clean the area, working in small sections, until no more dirt can be removed.
6. Remove tool from hose when finished. Clean under warm water before storing.

2.



4.



6.



## Stain removal

**Do Not Delay!** Attending to an accident soon after it occurs ensures the most optimal clean. Leaving it for an extended period of time may cause it to set and become permanent.

1. Blot up liquids with an absorbent cloth or paper towels. White materials are recommended because certain dyes may bleed and make the stain worse.
2. Gently scrape up any semi-solids with a spoon or spatula. Do not use a knife or other utensil with sharp edges because it could damage the carpet or upholstery.
3. If the area has already dried, separate and remove from the carpet whatever semi-solids



# Operations

and residue that can be accessed before deep cleaning.

4. Be sure to test any spot removal formulas in an inconspicuous area first. This is important as some dyes and materials could be damaged or discolored by cleaning solvents. If such a change should occur, try a different solution or call a professional.

5. If cleaning on Berber carpeting, gently run your machine over a hidden area. If no fuzzing occurs, continue cleaning in soiled area.

6. Using the BISSELL Stain PreTreat, spray evenly over soiled area. Do not overwet. Wait 3-5 minutes. Gently work the solution by blotting area with a clean, damp, color safe cloth.

7. Clean using either the FLOOR CLEANING, or TOOLS setting on the ReadyTools dial.

## Cleaning with the Stain Trapper Tool

1. Follow steps 1-5 on page 9.

2. Gently scrape up any semi-solids with a spoon or spatula. Do not use a knife or other utensil with sharp edges because it could damage the carpet or upholstery.

3. Plug in and turn on the power switch.

4. Clean by pressing the trigger to spray solution onto the area to be cleaned. Slowly move the tool back and forth over the soiled surface. Release the trigger to suction soiled water. Continue to clean in the area, working in small sections, until no more dirt can be removed. Rinse (optional) and suction as needed.

**CAUTION: Do not overwet.**

**NOTE: Do not fill the Stain Trapper tank above the FULL line.**

5. To empty the Stain Trapper tool, rotate the small tank on the bottom of the tool to unlock it.

**NOTE: Be careful to keep the top of the tool facing upward or soiled water will spill out of the tank.**

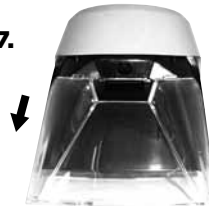
6. Dump dirty water into a sink or toilet and rinse the tank out with clean water. Replace the tank by lining up the "unlock" symbol with the small arrow on the tank and turning it to the "lock" symbol.

7. Clean the front of the tool by removing the plate over the suction path. Pull down on the bottom of the plate to remove. Run the tool and the plate under clean water to rinse taking care to remove all debris. Replace the front plate by sliding it back into place.

5.



7.



# Operations

## Hard floor cleaning

### (Select models only)

Your PROheat 2X model may have come with a hard floor attachment and 2X Hard Floor Solutions Formula. If not, these products are available for purchase by contacting the BISSELL Consumer Care department by phone or at the website. The hard floor tool provides effective cleaning for linoleum, vinyl, and tile floors. Caution: Do not use on unsealed hardwood floors.

1. Vacuum or sweep thoroughly to pick up any loose debris and pet hair.
2. Move any furniture, if needed.
3. Fill the formula tank to "WATER" line with water. Fill to "FORMULA" line with BISSELL 2X Hard Floor Solutions.
4. Fill the 2-in-1 water tank with hot tap water (140°F/60°C MAX) and set aside.
5. Attach the hard floor tool onto the bottom of the machine by hooking it into the nozzle and swinging it down until it clicks into place.
6. Set ReadyTools dial to the "FLOOR CLEANING" setting.
7. Set the Custom Clean dial to NORMAL clean.
8. Plug into an outlet and turn the power switch and heater **ON** ( I ).
9. Slowly move the machine forward and back over hard floor surface one time while depressing trigger. **Caution: Do not overwet.**
10. Repeat the motion without pressing the trigger using the hard floor tool to squeegee and suction up the dirty water.
11. Allow adequate time for floors to dry.
12. Remove hard floor tool, rinse and dry before storing.
13. Rinse out the formula tank.

## **WARNING**

To reduce the risk of fire and electric shock- when cleaning a hard floor, the BISSELL hard floor tool 203-5642 must be used and it must only be used with BISSELL 2X Hard Floor Solutions cleaning fluid intended for use with this appliance.

5.



# Maintenance & Care

## Machine storage

Once your cleaning is complete, make sure the 2-in-1 water tank is emptied, rinsed out, and dried before the next use. The formula tank can remain filled and ready to go.

**NOTE: Store cleaner in a protected, dry area. Since this product uses water, it must not be stored where there is a danger of freezing. Freezing will damage internal components and void the warranty.**

## Machine care

For best results, a few simple steps can assure your machine is well maintained after your cleaning is complete.

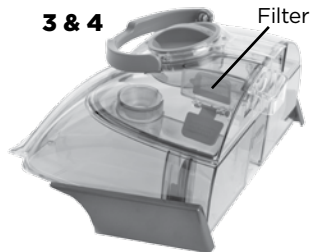
1. Flush your machine of any remaining residual solution.
  - a. Fill the 2-in-1 clean water tank with clean hot tap water.
  - b. Plug your machine into a proper outlet and set the Custom Clean dial to the rinse setting. Turn the power on by pressing the power button.
  - c. Recline the handle and press the spray trigger for 15 seconds while making forward and backward passes on carpet. Release the trigger to suction. Repeat for another 15 seconds. Continue without pressing the trigger until there is no more water being suctioned.
2. Turn power and heater switches OFF (O). Unplug the machine and wrap the power cord. Empty the 2-in-1 water tank.
3. Rinse out 2-in-1 water tank, with running hot tap water, taking care to clean underneath the heavy duty bladder, and all around it.
4. The top half of the tank can be rinsed clean through the nozzle area. Also, pop out the red filter underneath the top half of the tank and rinse out. Replace before putting the top and bottom halves of the tank together.

## WARNING

To reduce the risk of electric shock, turn power switch off and disconnect plug from electrical outlet before performing maintenance or troubleshooting checks.

## Tip

» Let all parts dry completely before storing



# Maintenance & Care

5. Before you place the cleaned 2-in-1 water tank back onto the machine, remove the red solution filter cap (on the base of the machine). Remove the cap by inserting a coin or a flat head screw driver into the slot on the top. Turn counter clock wise and unscrew. Set aside.

- a. Remove the white filter by grasping the post and pulling up and out of the unit. Rinse the filter under cold water.

**NOTE: Be careful not to drop the filter into the sink or disposal.**

- b. Replace the white filter back into the filter area.

**NOTE: Make sure the white filter is seated properly before placing the red solution filter cap.**

- c. Replace the red solution filter cap and turn clockwise to tighten.

6. Keeping the 2-in-1 water tank off of the base of the machine, simply unscrew the floor nozzle using a Phillips head screwdriver. This can be rinsed out at the faucet. Then replace back onto the machine by starting from the bottom of the nozzle and hooking the tabs into the holes on the bottom sides of the machine. Secure into place with the screw.

7. The inside of the end caps by the brush rolls can be wiped out with a clean paper towel, or, if a more thorough cleaning is desired, the end caps can be taken off using a Phillips head screwdriver and rinsed clean. Replace after cleaning.

8. Any loose hair or debris can be pulled from the brush rolls and thrown away. For the most thorough clean before storage, follow directions for removal and replacement of the brush rolls and belts.

9. To clean attachments that may have been used, remove from hose and rinse under clean, running water. Dry and replace attachment in the tool caddy. Clean the hose by suctioning clean water from the tap. Before replacing, lift end of hose and stretch out to ensure all water is cleared from hose. Refer to page 10.

10. After carpet is dry, vacuum again to remove hair and fuzz.

## **WARNING**

To reduce the risk of electric shock, turn power switch off and disconnect plug from electrical outlet before performing maintenance or troubleshooting checks.

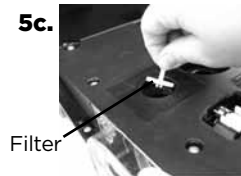
5a. Solution Filter Cap



5b.



5c.



6.



# Maintenance & Care

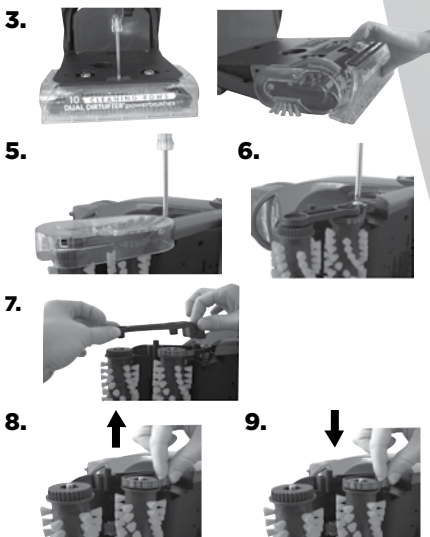
## Small belt removal and replacement

Occasional replacement of one or both belts may become necessary. If that is needed, please follow the instructions below.

1. Turn off the machine, and unplug it from the outlet.
2. Remove both the 2-in-1 water tank and the formula tank. Set aside.
3. Unscrew the front nozzle and remove it. Set aside.
4. Turn the machine on its side.  
**IMPORTANT: cord side down.**
5. Remove the clear end cap by unscrewing the 2 black screws. Take care not to drop the screws into the unit.
6. Remove 1 silver screw.
7. Remove pivot arm by gently lifting up.
8. Remove small brush belt.
9. Replace small brush belt, and reverse steps above.

## **⚠️ WARNING**

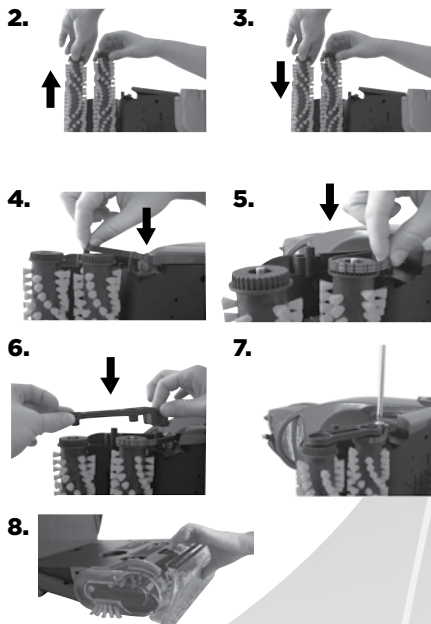
To reduce the risk of electric shock, turn power switch off and disconnect plug from electrical outlet before performing maintenance or troubleshooting checks.



## Brush removal and large belt replacement

Brushes can be removed for cleaning or replacement as needed.

1. Follow small belt removal instructions above.
2. Remove brush rolls by pulling them off of the metal rods. **Be careful not to lose the small washer at each end of the brush rolls.**
3. Place cleaned or new brush rolls back onto the rods. Make sure one washer is on each end of the rollers prior to sliding onto the rod. Be sure to let the rod slide through the bushing to insure proper fit.
4. Re-attach the long belt on the bottom to the cogs of the small roller brushes.
5. Place small belt over back roller and metal cog.
6. Place pivot arm in place and screw in place using the silver screw.
7. Re-attach clear end cap by tightening with the (2) black screws.
8. Return front nozzle to front of unit, by latching from underneath and then securing with a screw.



If you have any questions or are having trouble installing or replacing your belt(s) or brushes, please call **BISSELL Consumer Care**.

# Troubleshooting

## **WARNING**

To reduce the risk of electric shock, turn power switch off and disconnect plug from electrical outlet before performing maintenance or troubleshooting checks.

<b>Problem</b>	<b>Possible causes</b>	<b>Remedies</b>
<b>Built-in heater ready light does not illuminate</b>	The heater switch is not turned ON ( I )	Turn the heater switch ON ( I )
	The power switch is not turned ON ( I )	Both switches must be ON ( I ) to activate the heater ready light
<b>Reduced spray or no spray</b>	Water tank may be empty	Fill heavy duty bladder with hot tap water
	Tank may not be seated completely	Turn power OFF ( O ). Remove and reseat tank
	Pump may have lost prime.	Turn power OFF ( O ) and then back ON ( I ). Wait one minute, then depress trigger
<b>DirtLifter® PowerBrush does not turn</b>	The belt is off or broken	Turn power OFF ( O ) and unplug unit from outlet. Follow instructions on page 15
	The unit is in the upright position	Brushes only rotate when unit is reclined using the detent pedal
	Circuit breaker on machine may have tripped	Turn the machine OFF ( O ) and unplug from outlet. Check to see if foreign object is caught in brush roll. Remove object. Plug machine in to reset circuit breaker
<b>Cleaner not picking up solution</b>	ReadyTools dial may be at wrong setting	Set ReadyTools dial to either FLOOR CLEANING or TOOLS setting
	Tank may not be seated properly	Pick up both the 2-in-1 water and formula tank and reseat it to fit snugly on the unit
	Tank may not be assembled properly	Check to make sure the "lip" of the nozzle is securely hooked into the groove on bottom of Tank (see page 7)
	Solution or 2-in-1 water tank is empty	Check fluid levels in heavy duty bladder
	2-in-1 water tank has picked up maximum dirty water and red float door has closed.	Empty 2-in-1 water tank. Refill heavy duty bladder with clean hot tap water and 2X formula and replace.
	Red float "door" in the tank may have closed as a result of bumping an object or moving machine back and forth too quickly	Turn the machine OFF ( O ), allowing red float door to release into the open position. Turn unit back ON ( I ) to continue cleaning. Be sure your forward and backward strokes are done at a slower pace.
	Red lint screen in tank is dirty	Remove red lint screen, clean and replace.

**Please do not return this product to the store.**

Other maintenance or service not included in the manual should be performed by an authorized service representative.
















Thank you for selecting a BISSELL product.

**For any questions or concerns, BISSELL is happy to be of service. Contact us directly at 1-800-237-7691.**



# Replacement Parts


These items are available for your BISSELL ProHeat 2X deep cleaner.  
Call 1-800-237-7691 or visit [www.BISSELL.com](http://www.BISSELL.com)

PART #	PART NAME		PART #	PART NAME	
203-7017	Tank Assembly (complete) (Black)		203-6660	Tank Lid (Black)	
203-6618	Tank Bottom (Black)		203-6675	Cap and Insert for Tank	
203-7649	Floor Nozzle with End Cap Assembly		203-6679	Autoload Gasket (fits tank)	
203-6845	Float Door		203-6680	Tank Filter (Lint Screen)	
203-6682	Cord Wrap (Blue Illusion)		203-6685	Clear End Cap w/Edge Brushes (2 pack, includes screws)	
203-6686	Brush Roll – 6 row (includes 1 brush, axle, 2 swivel arms)		203-6688	Small Brush Belt (non-cord side)	
203-6804	Large Brush Belt (cord side)		203-6689	Hose Secure Latch	
203-6690	Hose Rack Assembly (Top/Bottom Hose Rack, Screws)				

\*Not all parts are included with every model.

# Accessories

These items are available for your BISSELL ProHeat 2X deep cleaner.  
Call 1-800-237-7691 or visit [www.BISSELL.com](http://www.BISSELL.com)

PART #	PART NAME		PART #	PART NAME	
203-6651	3" Tough Stain Tool		203-6652	Powered TurboBrush® Hand Tool	
203-6653	4" Upholstery Tool		203-6654	6" Stair Tool	
203-6655	Spraying Crevice Tool		203-5642	Bare Floor Tool with trial size bottle of Hard Floor Solutions formula	
203-7412	Deep Reach Pet Tool		160-0057	Stain Trapper Tool	
62E5-2	2X Deep Clean and Protect Formula with Scotchgard™ Protection 60 oz.		99K5-2	2X Pet Stain and Odor Formula with Scotchgard™ Protection 60 oz.	
89Q5-2	2X Allergen Cleansing Formula 60 oz.		78H6-3	2X Professional Deep Cleaning Formula with Scotchgard™ Protection 48 oz.	
56L9	2X Hard Floor Solutions Formula 16 oz.		4001	Stain PreTreat 22 oz.	

\*Not all parts are included with every model.

# Warranty

This warranty gives you specific legal rights, and you may also have other rights which may vary from state to state. If you need additional instruction regarding this warranty or have questions regarding what it may cover, please contact BISSELL Consumer Care by E-mail, telephone, or regular mail as described below.

## Limited Two-Year Warranty

Subject to the \*EXCEPTIONS AND EXCLUSIONS identified below, upon receipt of the product BISSELL will repair or replace (with new or remanufactured components or products), at BISSELL's option, free of charge from the date of purchase by the original purchaser, for two years any defective or malfunctioning part.

See information below on "If your BISSELL product should require service".

This warranty applies to product used for personal, and not commercial or rental service. This warranty does not apply to fans or routine maintenance components such as filters, belts, or brushes. Damage or malfunction caused by negligence, abuse, neglect, unauthorized repair, or any other use not in accordance with the User's Guide is not covered.

BISSELL IS NOT LIABLE FOR INCIDENTAL OR CONSEQUENTIAL DAMAGES OF ANY NATURE ASSOCIATED WITH THE USE OF THIS PRODUCT. BISSELL'S LIABILITY WILL NOT EXCEED THE PURCHASE PRICE OF THE PRODUCT.

**Some states do not allow the exclusion or limitation of incidental or consequential damages, so the above limitation or exclusion may not apply to you.**

## \*EXCEPTIONS AND EXCLUSIONS FROM THE TERMS OF THE LIMITED WARRANTY

THIS WARRANTY IS EXCLUSIVE AND IN LIEU OF ANY OTHER WARRANTIES EITHER ORAL OR WRITTEN. ANY IMPLIED WARRANTIES WHICH MAY ARISE BY OPERATION OF LAW, INCLUDING THE IMPLIED WARRANTIES OF MERCHANTABILITY AND FITNESS FOR A PARTICULAR PURPOSE, ARE LIMITED TO THE THREE YEAR DURATION FROM THE DATE OF PURCHASE AS DESCRIBED ABOVE.

Some states do not allow limitations on how long an implied warranty last so the above limitation may not apply to you.

**NOTE: Please keep your original sales receipt. It provides proof of date of purchase in the event of a warranty claim.**

# Service

## If your BISSELL product should require service:

Contact BISSELL Consumer Care to locate a BISSELL Authorized Service Center in your area.

If you need information about repairs or replacement parts, or if you have questions about your warranty, contact BISSELL Consumer Care.

## Website or E-mail:

[www.BISSELL.com](http://www.BISSELL.com)

## Or Call:

BISSELL Consumer Care  
1-800-237-7691

Monday - Friday 8am - 10pm ET

Saturday 9am - 8pm ET

Sunday 10am - 7pm ET

## Or Write:

BISSELL Homecare, Inc.

PO Box 3606

Grand Rapids, MI 49501

ATTN: Consumer Care

# Register your product today!

Registering is quick, easy and offers you benefits over the lifetime of your product.

## You'll receive:

### **BISSELL Rewards Points**

Automatically earn points for discounts and free shipping on future purchases.

### **Faster Service**

Supplying your information now saves you time should you need to contact us with questions regarding your product.

### **Product Support Reminders and Alerts**

We'll contact you with any important product maintenance reminders and alerts.

### **Special Promotions**

Optional: Register your email to receive notice of offers, contests, cleaning tips and more!

**Visit [www.BISSELL.com/registration](http://www.BISSELL.com/registration) now!**

## BISSELL Consumer Care

For information about repairs or replacement parts, or questions about your warranty:

### **Call:**

**BISSELL Consumer Care**  
1-800-237-7691

Monday - Friday      8 am - 10 pm ET  
Saturday                9 am - 8 pm ET  
Sunday                    10am - 7pm ET

### **Write:**

**BISSELL Homecare, Inc.**  
PO Box 3606  
Grand Rapids MI 49501  
ATTN: Consumer Care

### **Visit the BISSELL website: [www.BISSELL.com](http://www.BISSELL.com)**

When contacting BISSELL, have model number of cleaner available.

Please record your Model Number: \_\_\_\_\_

Please record your Purchase Date: \_\_\_\_\_

**NOTE: Please keep your original sales receipt. It provides proof of purchase date in the event of a warranty claim. See Warranty on page 19 for details.**

We can't wait to hear from you!

Rate this product and let us (and millions of your closest friends) know what you think!

**[www.BISSELL.com](http://www.BISSELL.com)**



©2013 BISSELL Homecare, Inc.  
Grand Rapids, Michigan  
All rights reserved. Printed in China  
Part Number 160-3105 Rev 11/13  
Visit our website at: [www.BISSELL.com](http://www.BISSELL.com)  
Scotchgard is a trademark of 3M