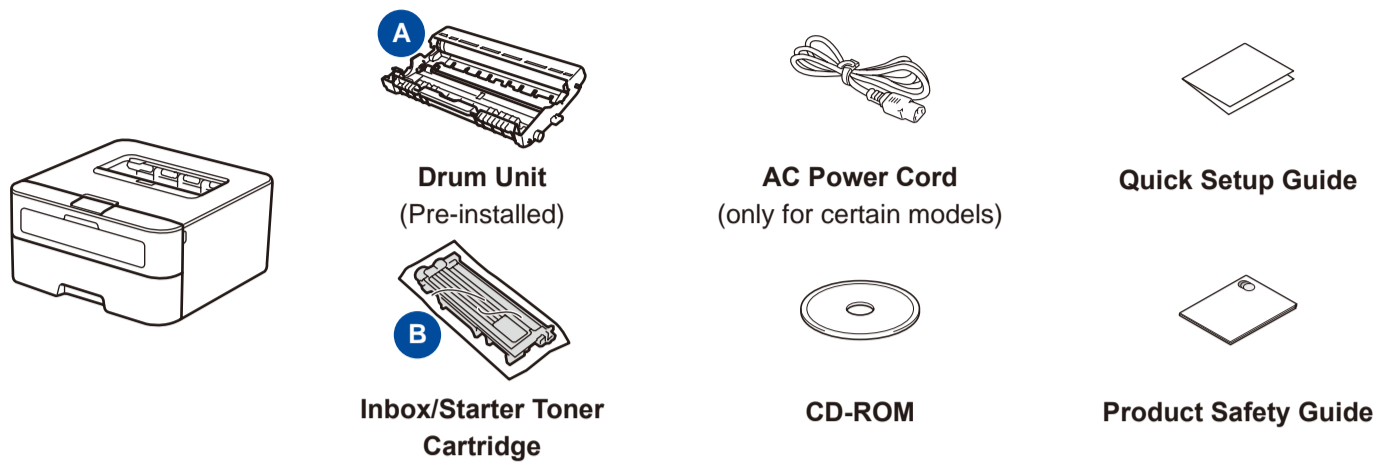




## Unpack the machine and check the components



Read the Product Safety Guide first, then read this Quick Setup Guide for the correct installation procedure. Manuals in Spanish for this model are available on the enclosed CD-ROM. (USA only) Manuales en Español para este modelo están disponibles en el CD-ROM incluido. (sólo en Estados Unidos)

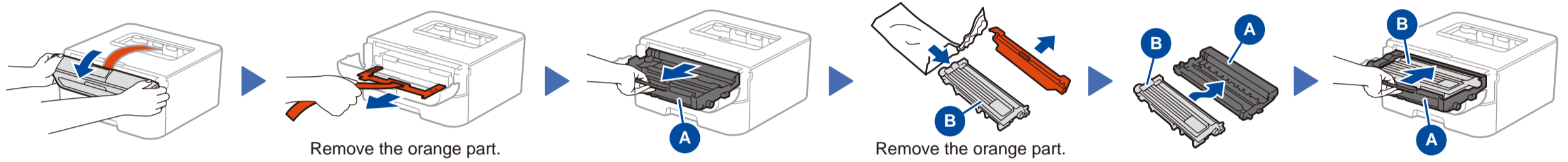
**NOTE:**

- The components included in the box and the AC power plug may differ depending on your country.
- You must purchase the correct interface cable for the interface you want to use.

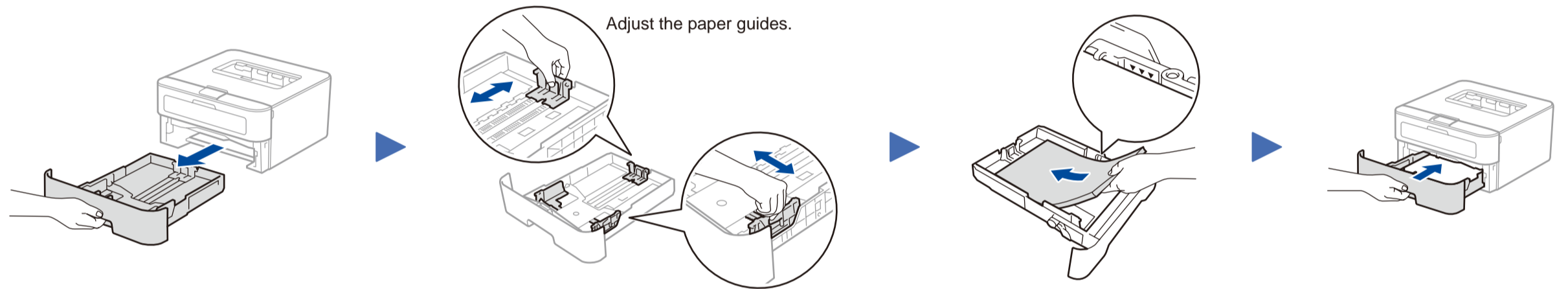
**USB cable**

We recommend using a USB 2.0 cable (Type A/B) that is no more than 2 meters (6 feet).

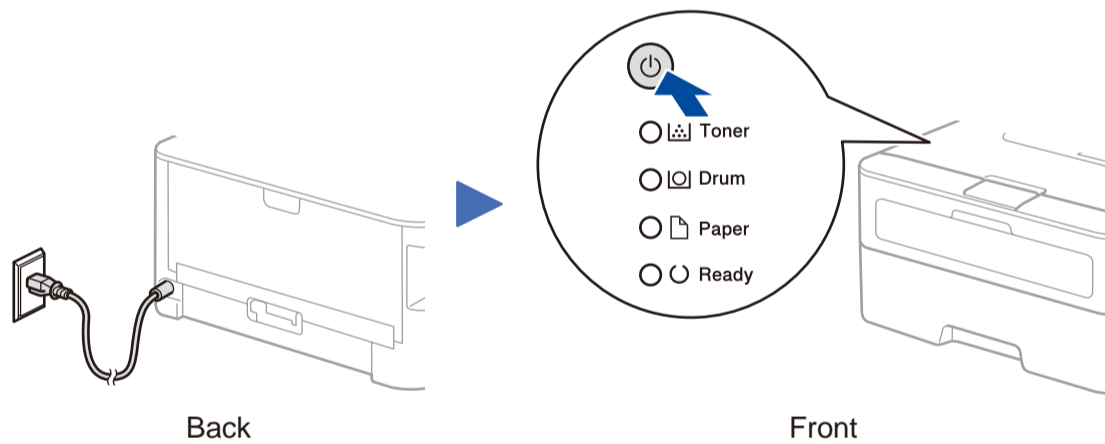
## 1 Remove the packing materials and install the toner cartridge



## 2 Load paper in the paper tray



## 3 Connect the power cord and turn on the machine



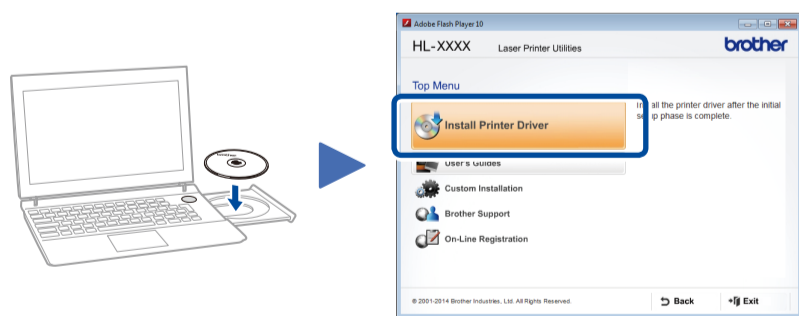
Printer LED Indications

Blinking: ☀ ON: ● or ● OFF: ○

	Toner Low <sup>1</sup>	Replace Toner	Drum End Soon <sup>1</sup>	Replace Drum	Drum ! <sup>2</sup>	Paper Jam / Cover is Open <sup>2</sup>	No Paper
<b>Toner</b>	☀	●	○	○	○	○	○
<b>Drum</b>	○	○	☀	●	☀	○	○
<b>Paper</b>	○	○	○	○	○	☀	●
<b>Ready</b>	●	○	●	●	○	○	○

<sup>1</sup> The yellow LED will blink in a pattern of ON for 2 seconds and then OFF for 3 seconds.  
<sup>2</sup> The LED will blink ON and OFF at 0.5 second intervals.

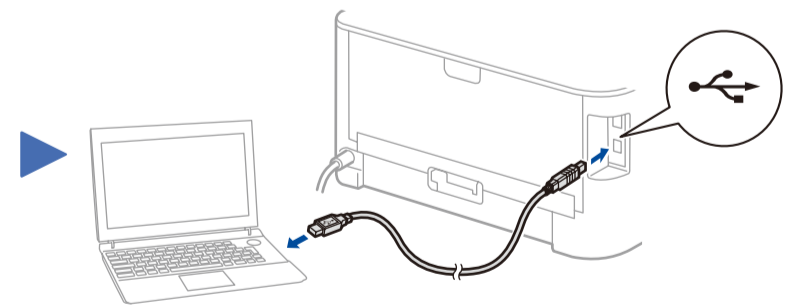
## 4A Configuration using the CD-ROM (Windows®)



Follow the on-screen instructions until the **Connect the machine** screen appears.

**NOTE:**

If the Brother screen does not appear automatically, go to **Computer (My Computer)**. (For Windows® 8: click the **File Explorer** icon on the taskbar, and then go to **Computer**.) Double-click the CD-ROM icon, and then double-click **start.exe**.



Follow the on-screen instructions to continue installation.

**Finish**

**NOTE:**

If connection is unsuccessful, repeat this step.

## 4B Configuration without using the CD-ROM (Windows® without CD-ROM drive or Macintosh)

Download the full driver and software package from the Brother Solutions Center.  
 (For Windows®) [solutions.brother.com/windows](http://solutions.brother.com/windows)  
 (For Macintosh) [solutions.brother.com/mac](http://solutions.brother.com/mac)