

Cuisinart®

INSTRUCTION BOOKLET

Recipe
Booklet
Reverse Side



Cuisinart® Juice Extractor

CJE-1000

For your safety and continued enjoyment of this product, always read the instruction book carefully before using.

IMPORTANT SAFEGUARDS

When using any electrical appliance, basic safety precautions should always be followed, including the following:

1. **READ INSTRUCTIONS THOROUGHLY**
2. **Always unplug unit from outlet when not in use, before putting on or removing parts and before cleaning.**
3. To protect against electrical shock, do not immerse the juice extractor motor housing in water or other liquids.
4. When any appliance is used by or near children, supervise closely.
5. Avoid contact with moving parts.
6. If the juice extractor has a damaged cord or plug or malfunctions, **DO NOT OPERATE.** Contact our Customer Service Center to return for examination, repair or adjustment.
7. Using accessory attachments not sold or recommended by the manufacturer can cause fire, electric shock or injury.
8. Do not allow the power cord to come into contact with any hot surfaces, including stove, or to hang over table edge or counter.
9. Before turning the motor on, always make sure juice extractor cover is properly positioned and securely in place. Do not open cover while the juice extractor is in operation.
10. Switch to OFF position after each use and be sure the motor stops completely before disassembling.
11. Do not put fingers or other objects into the juice extractor opening while it is in operation. If food becomes stuck in the opening, use food pusher or another piece of fruit or vegetable to push it down. Or turn the motor off and disassemble the unit to remove the remaining food.
12. If the rotating sieve is damaged, do not use.
13. Always make sure the juice extractor cover is properly positioned and secured before motor is turned on. If it is not, the safety interlock will not operate. Do not loosen cover while the juice extractor is in use.
14. Not designed for outdoor use.
15. Appliance should be plugged into a 120V household outlet only.

16. The appliance is wired for domestic use only.
17. Do not use the appliance for anything other than the intended purpose, as outlined in the instruction booklet.
18. Never juice with the spout in the closed position.
19. Do not operate without the pulp container in place.
20. Do not operate your appliance in an appliance garage or under a wall cabinet. **When storing in an appliance garage always unplug the unit from the electrical outlet.** Not doing so could create a risk of fire, especially if the appliance touches the walls of the garage or the door touches the unit as it closes.

SAVE THESE INSTRUCTIONS

HOUSEHOLD USE ONLY

No user-serviceable parts are inside. Do not attempt to service this product.

Maximum rating of 1000 watts is based on the food chopper attachment that draws the greatest power. Other recommended attachments may draw less power.

A short power supply cord is provided to reduce the risk resulting from becoming entangled in or tripping over a long cord. **AN EXTENSION CORD MAY BE USED WITH CARE: HOWEVER, THE MARKED ELECTRICAL RATING SHOULD BE AT LEAST AS GREAT AS THE ELECTRICAL RATING OF THE JUICE EXTRACTOR.**

The extension cord should not be allowed to drape over the countertop or tabletop, where it can be pulled on by children or tripped over.

POLARIZED PLUG

This appliance has a polarized plug (one blade is wider than the other). To reduce the risk of electric shock, this plug is intended to fit into a polarized outlet only one way. If the plug does not fit fully into the outlet, reverse the plug. If it still does not fit, contact a qualified electrician. Do not attempt to modify the plug in any way. If the plug fits loosely into the AC outlet or if the AC outlet feels warm, do not use that outlet.

CONTENTS

Important Safeguards	2
Parts and Features	3
Before First Use	3
Assembly Instructions	4
Operating Instructions	5
Cleaning and Maintenance	5
Tips and Hints	5
Troubleshooting	6
Approximate Yield Juicing Chart	7
Warranty	8

PARTS AND FEATURES

- 1. Motor base**
Die-cast and brushed stainless steel housing.
- 2. 5-speed dial control with blue LED light ring and On/Off button**
- 3. Stainless steel micro-mesh filter basket**
- 4. Filter bowl (not shown)**
- 5. Foam management filter disk**
- 6. Cover with 3-inch diameter feed tube and pyramid design fruit stabilizer**
- 7. Food pusher**
- 8. Juice spout (adjustable)**
Controls the flow rate.
- 9. 1-liter juice pitcher**
- 10. 2-liter pulp container**
- 11. 4-second safety break (not shown)**
Stops the filter basket with blades when handle tab is released.
- 12. Push box cord storage (not shown)**
- 13. Heavy-duty cleaning brush to clean filter basket**
- 14. 1000 watts of power for maximum juice extraction (not shown)**
- 15. BPA Free (not shown)**
All materials that come in contact with food and/or liquid are BPA free.

BEFORE FIRST USE

- Remove all packaging materials and any promotional labels or stickers from your juice extractor. Be sure all parts (listed in Parts and Features) of your new appliance have been included before discarding any packaging materials.
- You may want to keep the box and packing materials for use at a later date.
- Before using your Cuisinart® Juice Extractor for the first time, remove any dust from shipping by wiping the base with a damp cloth.
- Thoroughly clean cover, pusher, pulp container, juice pitcher, filter basket, and filter bowl.
- All removable parts can be submerged in water for cleaning and are dishwasher safe.
- Never place the motor housing in the dishwasher, nor should you immerse it in water. Always use a damp cloth to wipe clean.



ASSEMBLY INSTRUCTIONS

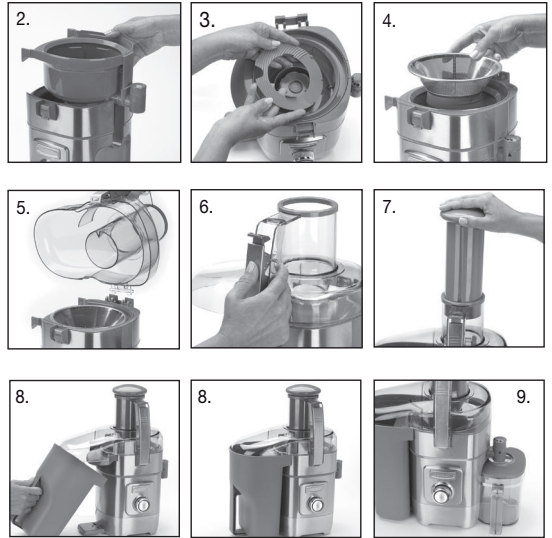
Assembling the Juice Pitcher

1. Place the juice pitcher on a flat surface.
2. Insert the foam separator.
3. Put cover in place. Set pitcher aside.



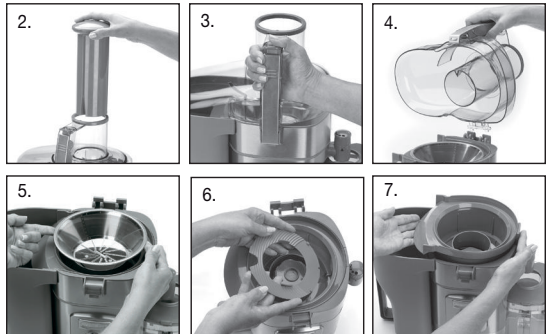
Assembling the Juice Extractor

1. Place base on a clean, flat surface.
2. Insert filter bowl, positioning spout on right side, on top of motor housing.
3. Place foam management filter disk in filter bowl.
4. Place mesh filter basket firmly in place in the filter bowl.
5. Hold the juice extractor cover by the handle with the feed tube facing back and the hinge straight down over the hinge slot on the motor housing. Insert the hinge into the slot and lower into position.
6. Make sure the handle lock is in the "open" position. Press handle in with an upward motion to close.
7. Slide the food pusher down the feed tube by aligning the groove in the food pusher with the small indent on the inside of the top of the feed tube.
8. Place the pulp container in position by tilting opening slightly under the cover.
9. Place the assembled juice pitcher under the spout, with the handle facing forward.
10. Make sure the spout is in the open position. Never juice with the spout in the closed position.



Disassembling the Juice Extractor

1. Unplug the juice extractor.
2. Remove the food pusher.
3. Press the handle tab release to unlock the cover.
4. Lift and remove cover.
5. Carefully remove the filter basket by pulling up on either side of the rim. **Be careful not to touch the blades in the bottom of the basket.**
6. Remove foam management filter disk.
7. Remove the filter bowl by pulling up on either side.



Foam Management System

If you prefer less foam in your juice, use the foam management filter disk and adjust the spout to a smaller opening. If you prefer more foam, do not use the disk and adjust the spout to a larger opening.

OPERATING INSTRUCTIONS

1. Make sure your juice extractor is properly assembled. (See Assembly Instructions.)
2. Plug the power cord into a 120V electrical outlet.
3. Make sure that the spout is in the open position. **NEVER JUICE WITH THE SPOUT IN THE CLOSED POSITION.**
4. Wash all selected fruits or vegetables.
5. While most fruits such as apples, pears, carrots, etc. will not need cutting, any fruit or vegetable with a diameter larger than 3 inches will need to be cut.
6. Set the dial to the desired speed. The blue LED light ring on the control dial will start to blink.
7. Press the button in the center of the control dial to start the juice extractor. The LED light ring will stop blinking and stay on.
8. Lift the food pusher out of the feed tube and drop your food into the feed tube. Push through by inserting the food pusher and pressing firmly.
9. The juice will flow into the juice pitcher and the pulp will accumulate in the pulp container.
10. When finished juicing, press the On/Off button to stop the motor. Turn the control dial to "0" to shut off the juice extractor.
11. Before removing the juice pitcher from under the spout, turn the spout to the closed position. This will prevent juice from dripping on the counter.

CLEANING AND MAINTENANCE

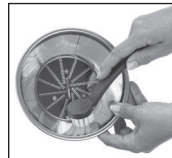
Do not immerse the motor housing in water or spray it with water. Clean only by wiping with a damp sponge, cloth or paper towel. Use any liquid dishwashing detergent, but do not use any products containing ammonia or scouring powders, as these products will dull, scratch or mar the finish.

For easy cleaning, always clean immediately after each use. Vegetables and fruits will harden if left to dry on the unit parts, making it harder to clean.

1. Unplug juicer.

WARNING: Be careful when handling the filter basket during cleaning, as the blades at the bottom

are very sharp. For best juicing results, always thoroughly clean the filter basket with the nylon brush provided. (See image.)



2. Take juice extractor apart, following Disassembly Instructions (page 4). First, rinse with cold water. Then wash the pulp container, juice pitcher, pusher, lid and rotating filter basket in hot, sudsy water, or place in top rack of dishwasher. Do not use a metal brush or pad.
3. Towel-dry all parts.
4. Any other servicing should be performed by an authorized service representative.

TIPS AND HINTS

- Extracted juice from fresh fruits and vegetables contains 95% of their nutrients. Drinking extracted juices is the fastest way to digest fruits and vegetables so that your body can absorb all of those nutrients. As opposed to eating the whole fruit, which can take about 1 hour to digest, extracted juices take only 15 minutes.
- Fresh juices are excellent for aiding in cleanses (ridding the body of toxins) and in weight management.
- Always use fresh, organic and seasonal produce. Organic produce is grown without synthetic fertilizers and chemicals, which is very important when juicing whole foods. When buying foods in season, they are considerably less expensive than purchasing off season, and the flavors are much better.
- Wash all vegetables immediately after purchasing and store them in the refrigerator. This way they are ready to juice at any time.
- Always juice fresh fruits and vegetables soon after purchasing. The longer produce is held, the more nutrients it loses.
- Always wash vegetables and fruit before juicing.
- Fresh juices should be consumed immediately. They lose nutrients as they sit.
- Certain fruits should be peeled first before juicing. Examples of such fruits are pineapples, melons, mangos, papayas, citrus – any fruit with skin that you cannot eat. Also remove all pits and hard seeds from fruit such as peaches, cherries, mangos, etc.

- Citrus fruit juice is delicious and creamy, plus it is more nutrient rich than citrus juice that is manually pressed.
- If cucumbers are waxy, peel them before you juice them.
- When juicing, softer ingredients should be juiced before the harder ones. As a rule, softer ingredients should be juiced at the low speed, while harder ingredients are juiced on higher speeds (refer to Juicing Chart, page 7).
- When juicing herbs or leafy greens, juice them in the middle of a combination of ingredients in order to extract the greatest amount of juice.
- Use your taste to guide you on fruit and vegetable combinations for juices. The recipes provided are a guideline, but the possibilities are endless. Experiment to see what your favorite combinations are.
- Carrots make a great and tasty base for vegetable juices, and apples do the same for fruit juices.
- Beets and carrots both have naturally high sugar content, so when added to vegetable juices they balance out any bitter flavors juiced vegetables may have.
- Use your juice extractor in tandem with your blender. Blend fresh juices with ingredients like bananas, yogurt, and protein powders for delicious power smoothies.
- It is also possible to make a healthier, fresher version of your favorite cocktail with fresh juices.
- Blend fruit juices with sparkling water or seltzer to make a natural soda.
- The pulp that is separated from the juice has its own health benefits. It is high in fiber and can be used in a variety of ways. See our recipes as guides on how you can incorporate the fibrous pulp into your diet.

TROUBLESHOOTING

PROBLEM	SOLUTION
Juice extractor does not turn on	The handle safety lock is not engaged. (See Assembly Instructions page 4.) Press On/Off button to start juicing.
Decreased juice rate	Make sure the spout is opened all the way. Excess pulp in filter basket can slow juice rate. Stop the juice extractor and clean filter basket.
Handle lock is not closing	Make sure that lock is fully opened by pushing down on the locking tab. Position your finger on the raised lines on the locking tab and press closed.

APPROXIMATE YIELD JUICING CHART

FRUIT	AMOUNT	SPEED	YIELD
APPLE	3 medium (about 1 pound)	5	10 ounces
CANTALOUPE (peeled)	½ fruit (about 1¼ pounds)	1	16 ounces
GRAPES	1 pound	1	8 ounces
MANGO (peeled and pitted)	1 fruit	2	3 ounces
ORANGE (peeled)	2 medium (about 1 pound)	2	12 ounces
PEACH	3 medium (about 1 pound)	3	8 ounces
PEAR	2 medium (about 1 pound)	4	10 ounces
PINEAPPLE (peeled and cored)	½ fruit	3	8 ounces
WATERMELON (peeled)	1 pound	1	14 ounces
VEGETABLE	AMOUNT	SPEED	YIELD
BEET	3 pieces (about 1 pound)	5	10 ounces
BEET GREENS	1 bunch (about 8 ounces)	5	5 ounces
CARROT	1 pound	5	8 ounces
CELERY	1 bunch (about 1¼ pounds)	4	12 ounces
CUCUMBER	1 large (about 12 ounces)	1	10 ounces
PARSLEY	1 bunch (about 6 ounces)	5	2 ounces
TOMATO	1 pound	2	10 ounces

WARRANTY

Limited Three-Year Warranty

This warranty is available to consumers only. You are a consumer if you own a Cuisinart® Juice Extractor that was purchased at retail for personal, family or household use. Except as otherwise required under applicable law, this warranty is not available to retailers or other commercial purchasers or owners. We warrant that your Cuisinart® Juice Extractor will be free of defects in materials and workmanship under normal home use for 3 years from the date of original purchase.

We recommend that you visit our website, www.cuisinart.com for a fast, efficient way to complete your product registration. However, product registration does not eliminate the need for the consumer to maintain the original proof of purchase in order to obtain the warranty benefits. In the event that you do not have proof of purchase date, the purchase date for purposes of this warranty will be the date of manufacture.

CALIFORNIA RESIDENTS ONLY

California law provides that for In-Warranty Service, California residents have the option of returning a nonconforming product (A) to the store where it was purchased or (B) to another retail store that sells Cuisinart® products of the same type. The retail store shall then, according to its preference, either repair the product, refer the consumer to an independent repair facility, replace the product, or refund the purchase price less the amount directly attributable to the consumer's prior usage of the product. If neither of the above two options results in the appropriate relief to the consumer, the consumer may then take the product to an independent repair facility, if service or repair can be economically accomplished. Cuisinart and not the consumer will be responsible for the reasonable cost of such service, repair, replacement, or refund for nonconforming products under warranty. California residents may also, according to their preference, return nonconforming products directly to Cuisinart for repair or, if necessary, replacement by calling our Consumer Service Center toll-free at 800-726-0190. Cuisinart will be responsible for the cost of the repair, replacement,

and shipping and handling for such nonconforming products under warranty.

BEFORE RETURNING YOUR CUISINART® PRODUCT

If your Cuisinart® Juice Extractor should prove to be defective within the warranty period, we will repair or, if we think necessary, replace it. To obtain warranty service, please call our Customer Service Center toll-free at 1-800-726-0190 or write to: Cuisinart, 7811 North Glen Harbor Blvd. Glendale, AZ 85307. To facilitate the speed and accuracy of your return, enclose \$10.00 for shipping and handling. (California residents need only supply a proof of purchase and should call 1-800-726-0190 for shipping instructions.) Please be sure to include your return address, description of the product's defect, product serial number, and any other information pertinent to the return. Please pay by check or money order. NOTE: For added protection and secure handling of any Cuisinart® product that is being returned, we recommend you use a traceable, insured delivery service. Cuisinart cannot be held responsible for in-transit damage or for packages that are not delivered to us. Lost and/or damaged products are not covered under warranty.

Your Cuisinart® Juice Extractor has been manufactured to the strictest specifications and has been designed for use only in 120 volt outlets and only with authorized accessories and replacement parts. This warranty expressly excludes any defects or damages caused by attempted use of this unit with a converter, as well as use with accessories, replacement parts or repair service other than those authorized by Cuisinart. This warranty does not cover any damage caused by accident, misuse, shipment or other than ordinary household use. This warranty excludes all incidental or consequential damages. Some states do not allow the exclusion or limitation of these damages, so these exclusions may not apply to you. You may also have other rights, which vary from state to state.

Important: If the nonconforming product is to be serviced by someone other than Cuisinart's Authorized Service Center, please remind the servicer to call our Consumer Service Center at 1-800-726-0190 to ensure that the problem is properly diagnosed, the product is serviced with the correct parts, and to ensure that the product is still under warranty.

Cuisinart®

SAVOR THE GOOD LIFE®



Coffeemakers



Blenders



Juicers



Cookware



Tools and
Gadgets

Cuisinart offers an extensive assortment of top quality products to make life in the kitchen easier than ever. Try some of our other countertop appliances, cookware, tools and gadgets.

www.cuisinart.com

©2012 Cuisinart
150 Milford Road
East Windsor, NJ 08520

Printed in China

11CE127830

Any trademarks or service marks of third parties referred to herein are the trademarks or service marks of their respective owners.

IB-9269B