




# Dell™ Inspiron™ 1018 Service Manual

[Before You Begin](#)  
[Battery](#)  
[Keyboard](#)  
[Hard Drive](#)  
[Palm Rest Assembly](#)  
[Power Button Board](#)  
[Memory Module](#)  
[Speaker](#)  
[Middle Cover](#)  
[Display](#)

[Camera Module](#)  
[I/O Board](#)  
[Wireless Mini-Card](#)  
[Status Lights Board](#)  
[Support Brackets](#)  
[AC Adapter Connector](#)  
[System Board](#)  
[Coin-Cell Battery](#)  
[Flashing the BIOS](#)

---

## Notes, Cautions, and Warnings

-  **NOTE:** A NOTE indicates important information that helps you make better use of your computer.
  -  **CAUTION:** A CAUTION indicates potential damage to hardware or loss of data if instructions are not followed.
  -  **WARNING:** A WARNING indicates a potential for property damage, personal injury, or death.
- 

Information in this document is subject to change without notice.  
© 2010 Dell Inc. All rights reserved.

Reproduction of these materials in any manner whatsoever without the written permission of Dell Inc. is strictly forbidden.

Trademarks used in this text: *Dell*, the *DELL* logo, and *Inspiron* are trademarks of Dell Inc.; *Bluetooth* is a registered trademark owned by Bluetooth SIG, Inc. and is used by Dell under license; *Microsoft*, *Windows*, and the *Windows* start button logo are either trademarks or registered trademarks of Microsoft Corporation in the United States and/or other countries.

Other trademarks and trade names may be used in this document to refer to either the entities claiming the marks and names or their products. Dell Inc. disclaims any proprietary interest in trademarks and trade names other than its own.

Regulatory model: P09T series  
Regulatory type: P09T001

July 2010 Rev. A00

## Battery

### Dell™ Inspiron™ 1018 Service Manual

- [Removing the Battery](#)
- [Replacing the Battery](#)

- WARNING:** Before working inside your computer, read the safety information that shipped with your computer. For additional safety best practices information, see the Regulatory Compliance Homepage at [www.dell.com/regulatory\\_compliance](http://www.dell.com/regulatory_compliance).
- CAUTION:** To avoid electrostatic discharge, ground yourself by using a wrist grounding strap or by periodically touching an unpainted metal surface (such as a connector on your computer).
- CAUTION:** Only a certified service technician should perform repairs on your computer. Damage due to servicing that is not authorized by Dell™ is not covered by your warranty.
- CAUTION:** To avoid damage to the computer, use only the battery designed for this particular Dell computer. Do not use batteries designed for other Dell computers.
- 

## Removing the Battery

1. Follow the instructions in [Before You Begin](#).
2. Turn the computer over.
3. Slide the battery release latches to the unlock position.
4. Lift the battery out of the battery bay.



1	battery	2	battery release latches (2)
---	---------	---	-----------------------------

---

## Replacing the Battery

- CAUTION:** To avoid damage to the computer, use only the battery designed for this particular Dell computer.
1. Follow the instructions in [Before You Begin](#).
  2. Align the tabs on the battery with the slots in the battery bay and gently press the battery down until it clicks into place.
-

[Back to Contents Page](#)

## Before You Begin

Dell™ Inspiron™ 1018 Service Manual

- [Recommended Tools](#)
- [Turning Off Your Computer](#)
- [Before Working Inside Your Computer](#)

This manual provides procedures for removing and installing the components in your computer. Unless otherwise noted, each procedure assumes that the following conditions exist:

- 1 You have performed the steps in [Turning Off Your Computer](#) and [Before Working Inside Your Computer](#).
- 1 You have read the safety information that shipped with your computer.
- 1 A component can be replaced or—if purchased separately—installed by performing the removal procedure in reverse order.

---

## Recommended Tools


The procedures in this document may require the following tools:

- 1 Small flat-blade screwdriver
- 1 Phillips screwdriver
- 1 Plastic scribe
- 1 BIOS executable update program at [support.dell.com](http://support.dell.com)

---

## Turning Off Your Computer


 **CAUTION:** To avoid losing data, save and close all open files and exit all open programs before you turn off your computer.


1. Save and close all open files and exit all open programs.
2. To shut down the operating system, click **Start**  and then click **Shut Down**.
3. Ensure that the computer is turned off. If your computer did not automatically turn off when you shut down your operating system, press and hold the power button until the computer turns off.


---


## Before Working Inside Your Computer


Use the following safety guidelines to help protect your computer from potential damage and to help to ensure your own personal safety.


 **WARNING:** Before working inside your computer, read the safety information that shipped with your computer. For additional safety best practices information, see the Regulatory Compliance Homepage at [www.dell.com/regulatory\\_compliance](http://www.dell.com/regulatory_compliance).

 **CAUTION:** To avoid electrostatic discharge, ground yourself by using a wrist grounding strap or by periodically touching an unpainted metal surface (such as a connector on your computer).


 **CAUTION:** Handle components and cards with care. Do not touch the components or contacts on a card. Hold a card by its edges or by its metal mounting bracket. Hold a component such as a processor by its edges, not by its pins.

 **CAUTION:** Only a certified service technician should perform repairs on your computer. Damage due to servicing that is not authorized by Dell™ is not covered by your warranty.


 **CAUTION:** When you disconnect a cable, pull on its connector or on its pull-tab, not on the cable itself. Some cables have connectors with locking tabs; if you are disconnecting this type of cable, press in on the locking tabs before you disconnect the cable. As you pull connectors apart, keep them evenly aligned to avoid bending any connector pins. Also, before you connect a cable, ensure that both connectors are correctly oriented and aligned.

 **CAUTION:** To avoid damaging the computer, perform the following steps before you begin working inside the computer.

1. Ensure that the work surface is flat and clean to prevent the computer cover from being scratched.
2. Turn off your computer (see [Turning Off Your Computer](#)) and all attached devices.

 **CAUTION:** To disconnect a network cable, first unplug the cable from your computer and then unplug the cable from the network device.

3. Disconnect all telephone or network cables from the computer.
4. Press and eject any installed cards from the Media Card Reader.
5. Disconnect your computer and all attached devices from their electrical outlets.
6. Disconnect all attached devices from your computer.

 **CAUTION:** To help prevent damage to the system board, remove the main battery (see [Removing the Battery](#)) before working inside the computer.

7. Remove the battery (see [Removing the Battery](#)).
8. Turn the computer top-side up, open the display, and press the power button to ground the system board.

---


[Back to Contents Page](#)

## Flashing the BIOS

### Dell™ Inspiron™ 1018 Service Manual

The BIOS may require flashing when an update is available or when replacing the system board. To flash the BIOS:

1. Turn on the computer.
2. Go to [support.dell.com/support/downloads](http://support.dell.com/support/downloads).
3. Locate the BIOS update file for your computer:


 **NOTE:** The Service Tag for your computer is located on a label at the bottom of your computer.

If you have your computer's Service Tag:

- a. Click **Enter a Service Tag**.
- b. Enter your computer's Service Tag in the **Enter a service tag:** field, click **Go**, and proceed to [step 4](#).

If you do not have your computer's Service Tag:

- a. Click **Select Model**.
- b. Select the type of product in the **Select Your Product Family** list.
- c. Select the product brand in the **Select Your Product Line** list.
- d. Select the product model number in the **Select Your Product Model** list.

 **NOTE:** If you have selected a different model and want to start over again, click **Start Over** on the top right of the menu.

- e. Click **Confirm**.
  4. A list of results appear on the screen. Click **BIOS**.
  5. Click **Download Now** to download the latest BIOS file.  
The **File Download** window appears.
  6. Click **Save** to save the file on your desktop. The file downloads to your desktop.
  7. Click **Close** if the **Download Complete** window appears.  
The file icon appears on your desktop and is titled the same as the downloaded BIOS update file.
  8. Double-click the file icon on the desktop and follow the instructions on the screen.
-

[Back to Contents Page](#)

## Camera Module

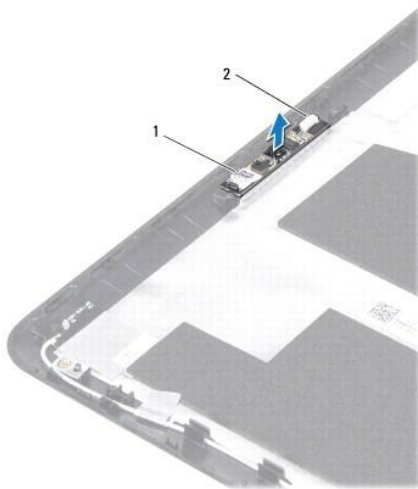
Dell™ Inspiron™ 1018 Service Manual

- [Removing the Camera Module](#)
- [Replacing the Camera Module](#)

- WARNING:** Before working inside your computer, read the safety information that shipped with your computer. For additional safety best practices information, see the Regulatory Compliance Homepage at [www.dell.com/regulatory\\_compliance](http://www.dell.com/regulatory_compliance).
- CAUTION:** To avoid electrostatic discharge, ground yourself by using a wrist grounding strap or by periodically touching an unpainted metal surface (such as a connector on your computer).
- CAUTION:** Only a certified service technician should perform repairs on your computer. Damage due to servicing that is not authorized by Dell™ is not covered by your warranty.
- CAUTION:** To help prevent damage to the system board, remove the main battery (see [Removing the Battery](#)) before working inside the computer.
- 


### Removing the Camera Module

1. Follow the instructions in [Before You Begin](#).
2. Remove the battery (see [Removing the Battery](#)).
3. Remove the keyboard (see [Removing the Keyboard](#)).
4. Remove the hard-drive assembly (follow the instructions from [step 4](#) to [step 6](#) in [Removing the Hard Drive](#)).
5. Remove the palm rest assembly (see [Removing the Palm Rest Assembly](#)).
6. Remove the memory module (see [Removing the Memory Module](#)).
7. Remove the middle cover (see [Removing the Middle Cover](#)).
8. Remove the display assembly (see [Removing the Display Assembly](#)).
9. Remove the display bezel (see [Removing the Display Bezel](#)).
10. Remove the display panel (see [Removing the Display Panel](#)).
11. Gently remove the camera module from the display back cover.



## Replacing the Camera Module

1. Follow the instructions in [Before You Begin](#).
2. Use the alignment posts to place the camera module on the display back cover.
3. Replace the display panel (see [Replacing the Display Panel](#)).
4. Replace the display bezel (see [Replacing the Display Bezel](#)).
5. Replace the display assembly (see [Replacing the Display Assembly](#)).
6. Replace the middle cover (see [Replacing the Middle Cover](#)).
7. Replace the memory module (see [Replacing the Memory Module](#)).
8. Replace the palm rest assembly (see [Replacing the Palm Rest Assembly](#)).
9. Replace the hard-drive assembly (follow the instructions from [step 5](#) to [step 7](#) in [Replacing the Hard Drive](#)).
10. Replace the keyboard (see [Replacing the Keyboard](#)).
11. Replace the battery (see [Replacing the Battery](#)).

 **CAUTION:** Before turning on the computer, replace all screws and ensure that no stray screws remain inside the computer. Failure to do so may result in damage to the computer.

---

[Back to Contents Page](#)

[Back to Contents Page](#)

## Coin-Cell Battery

Dell™ Inspiron™ 1018 Service Manual

- [Removing the Coin-Cell Battery](#)
- [Replacing the Coin-Cell Battery](#)

- WARNING:** Before working inside your computer, read the safety information that shipped with your computer. For additional safety best practices information, see the Regulatory Compliance Homepage at [www.dell.com/regulatory\\_compliance](http://www.dell.com/regulatory_compliance).
- CAUTION:** To avoid electrostatic discharge, ground yourself by using a wrist grounding strap or by periodically touching an unpainted metal surface (such as a connector on your computer).
- CAUTION:** Only a certified service technician should perform repairs on your computer. Damage due to servicing that is not authorized by Dell™ is not covered by your warranty.
- CAUTION:** To help prevent damage to the system board, remove the main battery (see [Removing the Battery](#)) before working inside the computer.
- 

### Removing the Coin-Cell Battery

1. Follow the instructions in [Before You Begin](#).
2. Remove the battery (see [Removing the Battery](#)).
3. Remove the system board (see [Removing the System Board](#)).
4. Turn the system board over.
5. Using a plastic scribe, gently pry the coin-cell battery out of the battery socket on the system board.



1	plastic scribe	2	coin-cell battery
---	----------------	---	-------------------

---

### Replacing the Coin-Cell Battery

1. Follow the instructions in [Before You Begin](#).
2. With the positive-side facing up, snap the coin-cell battery into the battery socket on the system board.
3. Replace the system board (see [Replacing the System Board](#)).
4. Replace the battery (see [Replacing the Battery](#)).

- CAUTION:** Before turning on the computer, replace all screws and ensure that no stray screws remain inside the computer. Failure to do so may result in damage to the computer.
- 

[Back to Contents Page](#)



## AC Adapter Connector

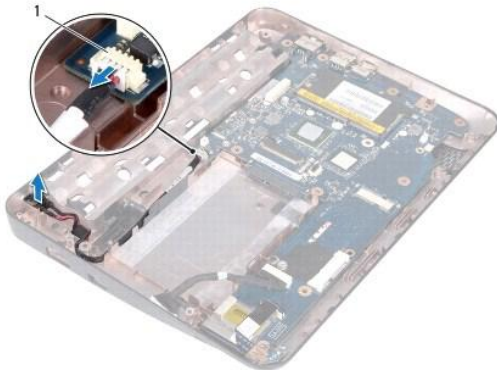
### Dell™ Inspiron™ 1018 Service Manual

- [Removing the AC Adapter Connector](#)
- [Replacing the AC Adapter Connector](#)

- ⚠ WARNING:** Before working inside your computer, read the safety information that shipped with your computer. For additional safety best practices information, see the Regulatory Compliance Homepage at [www.dell.com/regulatory\\_compliance](http://www.dell.com/regulatory_compliance).
- ⚠ CAUTION:** To avoid electrostatic discharge, ground yourself by using a wrist grounding strap or by periodically touching an unpainted metal surface (such as a connector on your computer).
- ⚠ CAUTION:** Only a certified service technician should perform repairs on your computer. Damage due to servicing that is not authorized by Dell™ is not covered by your warranty.
- ⚠ CAUTION:** To help prevent damage to the system board, remove the main battery (see [Removing the Battery](#)) before working inside the computer.
- 

## Removing the AC Adapter Connector


1. Follow the instructions in [Before You Begin](#).
2. Remove the battery (see [Removing the Battery](#)).
3. Remove the keyboard (see [Removing the Keyboard](#)).
4. Remove the hard-drive assembly (follow the instructions from [step 4](#) to [step 6](#) in [Removing the Hard Drive](#)).
5. Remove the palm rest assembly (see [Removing the Palm Rest Assembly](#)).
6. Remove the memory module (see [Removing the Memory Module](#)).
7. Remove the Mini-Card (see [Removing the Mini-Card](#)).
8. Remove the middle cover (see [Removing the Middle Cover](#)).
9. Remove the display assembly (see [Removing the Display Assembly](#)).
10. Remove the support brackets (see [Removing the Support Brackets](#)).
11. Remove the I/O board (see [Removing the I/O Board](#)).
12. Make a note of the AC adapter connector cable routing and remove the cable from the routing guide.
13. Lift the AC adapter connector off the computer base.



---

## Replacing the AC Adapter Connector

1. Follow the instructions in [Before You Begin](#).
2. Place the AC adapter connector in the computer base.
3. Route the AC adapter connector cable through the routing guide and connect the cable to the connector on the system board.
4. Replace the I/O board (see [Replacing the I/O Board](#)).
5. Replace the support brackets (see [Replacing the Support Brackets](#)).
6. Replace the display assembly (see [Replacing the Display Assembly](#)).
7. Replace the middle cover (see [Replacing the Middle Cover](#)).
8. Replace the Mini-Card (see [Replacing the Mini-Card](#)).
9. Replace the memory module (see [Replacing the Memory Module](#)).
10. Replace the palm rest assembly (see [Replacing the Palm Rest Assembly](#)).
11. Replace the hard-drive assembly (follow the instructions from [step 5](#) to [step 7](#) in [Replacing the Hard Drive](#)).
12. Replace the keyboard (see [Replacing the Keyboard](#)).
13. Replace the battery (see [Replacing the Battery](#)).

 **CAUTION:** Before turning on the computer, replace all screws and ensure that no stray screws remain inside the computer. Failure to do so may result in damage to the computer.

---

[Back to Contents Page](#)

## Display

### Dell™ Inspiron™ 1018 Service Manual

- [Display Assembly](#)
- [Display Bezel](#)
- [Display Panel](#)
- [Display Cable](#)
- [Display Panel Brackets](#)

- WARNING:** Before working inside your computer, read the safety information that shipped with your computer. For additional safety best practices information, see the Regulatory Compliance Homepage at [www.dell.com/regulatory\\_compliance](http://www.dell.com/regulatory_compliance).
- CAUTION:** To avoid electrostatic discharge, ground yourself by using a wrist grounding strap or by periodically touching an unpainted metal surface (such as a connector on your computer).
- CAUTION:** Only a certified service technician should perform repairs on your computer. Damage due to servicing that is not authorized by Dell™ is not covered by your warranty.
- CAUTION:** To help prevent damage to the system board, remove the main battery (see [Removing the Battery](#)) before working inside the computer.
- 

## Display Assembly

### Removing the Display Assembly

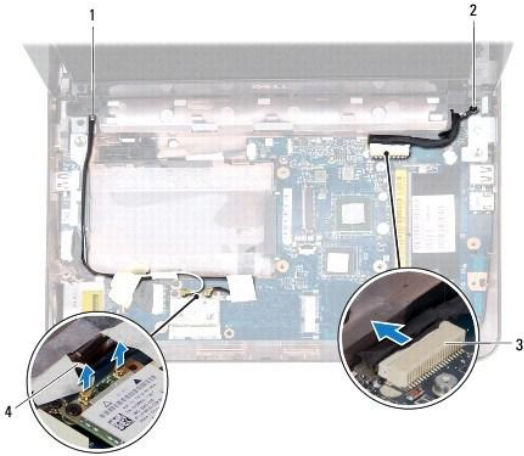
1. Follow the instructions in [Before You Begin](#).
2. Remove the battery (see [Removing the Battery](#)).
3. Remove the keyboard (see [Removing the Keyboard](#)).
4. Remove the hard-drive assembly (follow the instructions from [step 4](#) to [step 6](#) in [Removing the Hard Drive](#)).
5. Remove the palm rest assembly (see [Removing the Palm Rest Assembly](#)).
6. Remove the memory module (see [Removing the Memory Module](#)).
7. Remove the middle cover (see [Removing the Middle Cover](#)).
8. Remove the screw that secures the display assembly to the computer base.



1	screw
---	-------

⚠ **CAUTION:** Be extremely careful when opening the display to prevent damaging the display assembly.

9. Open the display as far as possible.
10. Disconnect the Mini-Card antenna cables from the Mini-Card.
11. Note the routing of the Mini-Card antenna cables and remove them from the routing guides on the computer.
12. Disconnect the display cable from the connector on the system board.



1	Mini-Card cable routing	2	display cable grounding screw
3	display cable connector	4	antenna cables (2)


13. Remove the two screws that secure the display assembly to the computer base.
14. Lift the display assembly off the computer base.



1	screws (2)
---	------------

## Replacing the Display Assembly


1. Follow the instructions in [Before You Begin](#).
2. Place the display assembly in position and replace the screw near the left hinge that secures the display assembly to the computer base.
3. Place the display grounding cable over the screw hole and replace the display cable grounding screw.
4. Connect the display cable to the connector on the system board.
5. Route the Mini-Card antenna cables through the routing guides on the computer base.
6. Connect the Mini-Card antenna cables to the Mini-Card (see [Replacing the Mini-Card](#)).
7. Close the display and replace the screw that secures the display assembly to the computer base.
8. Replace the middle cover (see [Replacing the Middle Cover](#)).
9. Replace the memory module (see [Replacing the Memory Module](#)).
10. Replace the palm rest assembly (see [Replacing the Palm Rest Assembly](#)).
11. Replace the hard-drive assembly (follow the instructions from [step 5](#) to [step 7](#) in [Replacing the Hard Drive](#)).
12. Replace the keyboard (see [Replacing the Keyboard](#)).
13. Replace the battery (see [Replacing the Battery](#)).

 **CAUTION:** Before turning on the computer, replace all screws and ensure that no stray screws remain inside the computer. Failure to do so may result in damage to the computer.

---

## Display Bezel

### Removing the Display Bezel

 **CAUTION:** The display bezel is extremely fragile. Be careful when removing it to prevent damaging the bezel.

1. Follow the instructions in [Before You Begin](#).
2. Remove the display assembly (see [Removing the Display Assembly](#)).
3. Remove the two rubber pads that cover the display bezel screws.
4. Remove the two screws that secure the display bezel to the display assembly.



1	screws (2)	2	rubber pads (2)
3	display bezel		

5. Using your fingertips, carefully pry up the inside edge of the display bezel.
6. Lift the display bezel off the display assembly.

## Replacing the Display Bezel

1. Follow the instructions in [Before You Begin](#).
2. Align the display bezel over the display panel, and gently snap it into place.
3. Replace the two screws that secure the display bezel to the display back cover.
4. Replace the two rubber pads that cover the display bezel screws.
5. Replace the display assembly (see [Replacing the Display Assembly](#)).

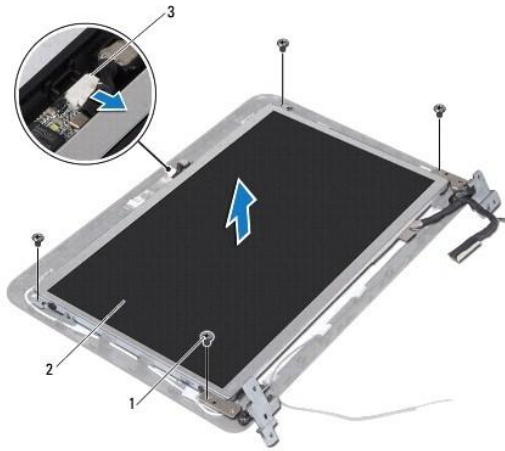
**CAUTION:** Before turning on the computer, replace all screws and ensure that no stray screws remain inside the computer. Failure to do so may result in damage to the computer.

---

## Display Panel

### Removing the Display Panel

1. Follow the instructions in [Before You Begin](#).
2. Remove the display assembly (see [Removing the Display Assembly](#)).
3. Remove the display bezel (see [Removing the Display Bezel](#)).
4. Disconnect the camera cable from the connector on the camera module.
5. Remove the four screws that secure the display panel to the display back cover.
6. Lift the display panel off the display back cover.



1	screws (4)	2	display panel
3	camera cable connector		

## Replacing the Display Panel

1. Follow the instructions in [Before You Begin](#).
2. Place the display panel over the display back cover.
3. Connect the camera cable to the connector on the camera module.
4. Replace the four screws that secure the display panel to the display back cover.
5. Replace the display bezel (see [Replacing the Display Bezel](#)).
6. Replace the display assembly (see [Replacing the Display Assembly](#)).

**CAUTION:** Before turning on the computer, replace all screws and ensure that no stray screws remain inside the computer. Failure to do so may result in damage to the computer.

---

## Display Cable

### Removing the Display Cable

1. Follow the instructions in [Before You Begin](#).
2. Remove the display assembly (see [Removing the Display Assembly](#)).
3. Remove the display bezel (see [Removing the Display Bezel](#)).
4. Remove the display panel (see [Removing the Display Panel](#)).
5. Turn the display panel over and place it on a clean surface.
6. Pull the pull-tab to disconnect the display cable from the connector on the display panel.



1	display cable	2	pull-tab
3	display-cable connector		

7. Gently peel off the display cable from the display panel.

## Replacing the Display Cable

1. Follow the instructions in [Before You Begin](#).
2. Adhere the display cable along the edge of the display panel.
3. Connect the display cable to the connector on the display panel.
4. Replace the display panel (see [Replacing the Display Panel](#)).
5. Replace the display bezel (see [Replacing the Display Bezel](#)).
6. Replace the display assembly ([Replacing the Display Assembly](#)).

**CAUTION:** Before turning on the computer, replace all screws and ensure that no stray screws remain inside the computer. Failure to do so may result in damage to the computer.

---

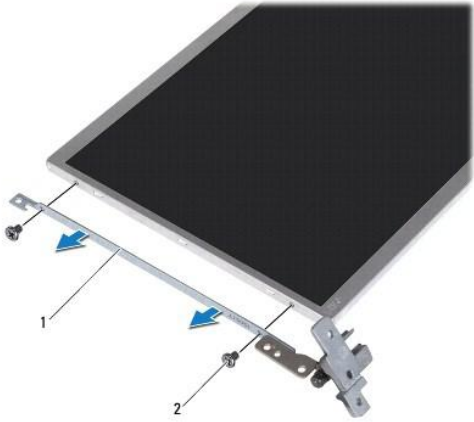
## Display Panel Brackets

### Removing the Display Panel Brackets

1. Follow the instructions in [Before You Begin](#).
2. Remove the display assembly (see [Removing the Display Assembly](#)).
3. Remove the display bezel (see [Removing the Display Bezel](#)).
4. Remove the display panel (see [Removing the Display Panel](#)).



5. Remove the four screws (two on each side) that secure the display panel brackets to the display panel.
6. Remove the display panel brackets off the display panel.



1	display panel brackets (2)	2	screws (4)
---	----------------------------	---	------------

## Replacing the Display Panel Brackets

1. Follow the instructions in [Before You Begin](#).
2. Place the display panel brackets in position.
3. Replace the four screws (two on each side) that secure the display panel brackets to the display panel.
4. Replace the display panel (see [Replacing the Display Panel](#)).
5. Replace the display bezel (see [Replacing the Display Bezel](#)).
6. Replace the display assembly (see [Replacing the Display Assembly](#)).

**CAUTION:** Before turning on the computer, replace all screws and ensure that no stray screws remain inside the computer. Failure to do so may result in damage to the computer.

---

[Back to Contents Page](#)

## Hard Drive

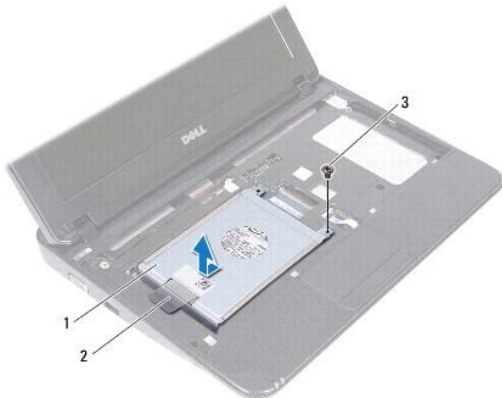
### Dell™ Inspiron™ 1018 Service Manual

- [Removing the Hard Drive](#)
- [Replacing the Hard Drive](#)

- ⚠ **WARNING:** Before working inside your computer, read the safety information that shipped with your computer. For additional safety best practices information, see the Regulatory Compliance Homepage at [www.dell.com/regulatory\\_compliance](http://www.dell.com/regulatory_compliance).
- ⚠ **WARNING:** If you remove the hard drive from the computer when the drive is hot, do not touch the metal housing of the hard drive.
- ⚠ **CAUTION:** To avoid electrostatic discharge, ground yourself by using a wrist grounding strap or by periodically touching an unpainted metal surface (such as a connector on your computer).
- ⚠ **CAUTION:** To help prevent damage to the system board, remove the main battery (see [Removing the Battery](#)) before working inside the computer.
- ⚠ **CAUTION:** To prevent data loss, turn off your computer (see [Turning Off Your Computer](#)) before removing the hard-drive assembly. Do not remove the hard drive while the computer is On or in Sleep state.
- ⚠ **CAUTION:** Hard drives are extremely fragile. Exercise care when handling the hard drive.
- ⚠ **CAUTION:** Only a certified service technician should perform repairs on your computer. Damage due to servicing that is not authorized by Dell™ is not covered by your warranty.
- 🔧 **NOTE:** Dell does not guarantee compatibility or provide support for hard drives from sources other than Dell.
- 🔧 **NOTE:** If you are installing a hard drive from a source other than Dell, you need to install an operating system, drivers, and utilities on the new hard drive.

## Removing the Hard Drive

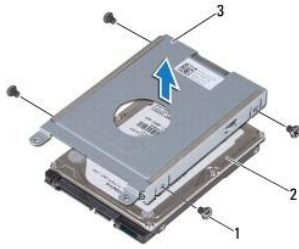
1. Follow the instructions in [Before You Begin](#).
2. Remove the battery (see [Removing the Battery](#)).
3. Remove the keyboard (see [Removing the Keyboard](#)).
4. Remove the screw that secures the hard-drive assembly to the system board.
5. Using the pull-tab, slide the hard-drive assembly to the side to disconnect it from the connector on the system board.
6. Lift the hard-drive assembly out of the computer base.



1	hard-drive assembly	2	pull-tab
3	screw		

7. Remove the four screws that secure the hard-drive bracket to the hard drive.

- Lift the hard-drive bracket away from the hard drive.



1	screws (4)	2	hard drive
3	hard-drive bracket		

---

## Replacing the Hard Drive

- Follow the instructions in [Before You Begin](#).
- Remove the new hard drive from its packaging.  
Save the original packaging for storing or shipping the hard drive.
- Place the hard drive in the hard-drive bracket.
- Replace the four screws that secure the hard-drive bracket to the hard drive.
- Place the hard-drive assembly on the computer base.
- Using the pull-tab, slide the hard-drive assembly into the connector on the system board.
- Replace the screw that secures the hard-drive assembly to the system board.
- Replace the keyboard (see [Replacing the Keyboard](#)).
- Replace the battery (see [Replacing the Battery](#)).

**CAUTION:** Before turning on the computer, replace all screws and ensure that no stray screws remain inside the computer. Failure to do so may result in damage to the computer.

---

[Back to Contents Page](#)

[Back to Contents Page](#)

## Middle Cover

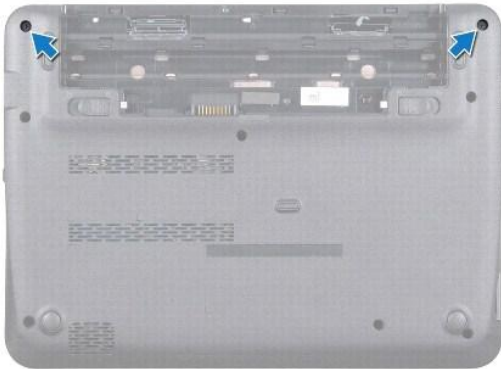
### Dell™ Inspiron™ 1018 Service Manual

- [Removing the Middle Cover](#)
- [Replacing the Middle Cover](#)

- WARNING:** Before working inside your computer, read the safety information that shipped with your computer. For additional safety best practices information, see the Regulatory Compliance Homepage at [www.dell.com/regulatory\\_compliance](http://www.dell.com/regulatory_compliance).
- CAUTION:** To avoid electrostatic discharge, ground yourself by using a wrist grounding strap or by periodically touching an unpainted metal surface (such as a connector on your computer).
- CAUTION:** Only a certified service technician should perform repairs on your computer. Damage due to servicing that is not authorized by Dell™ is not covered by your warranty.
- CAUTION:** To help prevent damage to the system board, remove the main battery (see [Removing the Battery](#)) before working inside the computer.
- 

## Removing the Middle Cover

1. Follow the instructions in [Before You Begin](#).
2. Remove the battery (see [Removing the Battery](#)).
3. Remove the two screws that secure the middle cover to the computer base.



4. Using a plastic scribe, gently pry out the middle cover and remove it from the computer base.
5. Lift the middle cover off the computer.




1	middle cover	2	plastic scribe
---	--------------	---	----------------

---

## Replacing the Middle Cover

1. Follow the instructions in [Before You Begin](#).
2. Align the tabs on the middle cover with the slots on the computer base and snap the middle cover into place.
3. Turn the computer over.
4. Replace the two screws that secure the middle cover to the computer base.
5. Replace the battery (see [Replacing the Battery](#)).

 **CAUTION:** Before turning on the computer, replace all screws and ensure that no stray screws remain inside the computer. Failure to do so may result in damage to the computer.

---

[Back to Contents Page](#)

## I/O Board

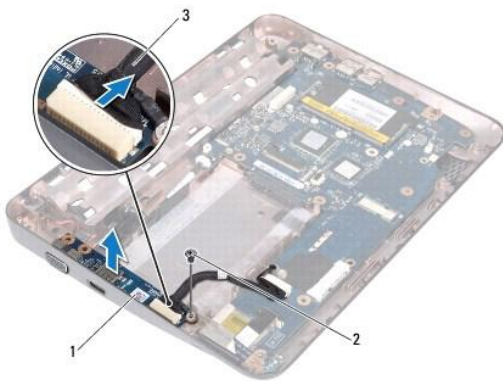
### Dell™ Inspiron™ 1018 Service Manual

- [Removing the I/O Board](#)
- [Replacing the I/O Board](#)

- WARNING:** Before working inside your computer, read the safety information that shipped with your computer. For additional safety best practices information, see the Regulatory Compliance Homepage at [www.dell.com/regulatory\\_compliance](http://www.dell.com/regulatory_compliance).
- CAUTION:** To avoid electrostatic discharge, ground yourself by using a wrist grounding strap or by periodically touching an unpainted metal surface (such as a connector on your computer).
- CAUTION:** Only a certified service technician should perform repairs on your computer. Damage due to servicing that is not authorized by Dell™ is not covered by your warranty.
- CAUTION:** To help prevent damage to the system board, remove the main battery (see [Removing the Battery](#)) before working inside the computer.
- 

## Removing the I/O Board

1. Follow the instructions in [Before You Begin](#).
2. Remove the battery (see [Removing the Battery](#)).
3. Remove the keyboard (see [Removing the Keyboard](#)).
4. Remove the hard-drive assembly (follow the instructions from [step 4](#) to [step 6](#) in [Removing the Hard Drive](#)).
5. Remove the palm rest assembly (see [Removing the Palm Rest Assembly](#)).
6. Remove the memory module (see [Removing the Memory Module](#)).
7. Remove the middle cover (see [Removing the Middle Cover](#)).
8. Remove the display assembly (see [Removing the Display Assembly](#)).
9. Remove the support brackets (see [Removing the Support Brackets](#)).
10. Disconnect the I/O board cable from the connector on the I/O board.




1	I/O board	2	grounding screw
3	I/O board cable		

11. Remove the grounding screw that secures the I/O board to the computer base.
12. Lift the I/O board and ease the connectors on the I/O board out of the computer base.

---

## Replacing the I/O Board

1. Follow the instructions in [Before You Begin](#).
2. Align the connectors on the I/O board with the slots on the computer base.
3. Connect the I/O board cable to the connector on the I/O board.
4. Place the I/O board grounding cable over the screw hole and replace the grounding screw.
5. Replace the support brackets (see [Replacing the Support Brackets](#)).
6. Replace the display assembly (see [Replacing the Display Assembly](#)).
7. Replace the middle cover (see [Replacing the Middle Cover](#)).
8. Replace the memory module (see [Replacing the Memory Module](#)).
9. Replace the palm rest assembly (see [Replacing the Palm Rest Assembly](#)).
10. Replace the hard-drive assembly (follow the instructions from [step 5](#) to [step 7](#) in [Replacing the Hard Drive](#)).
11. Replace the keyboard (see [Replacing the Keyboard](#)).
12. Replace the battery (see [Replacing the Battery](#)).

 **CAUTION:** Before turning on the computer, replace all screws and ensure that no stray screws remain inside the computer. Failure to do so may result in damage to the computer.

---

[Back to Contents Page](#)

[Back to Contents Page](#)

## Keyboard

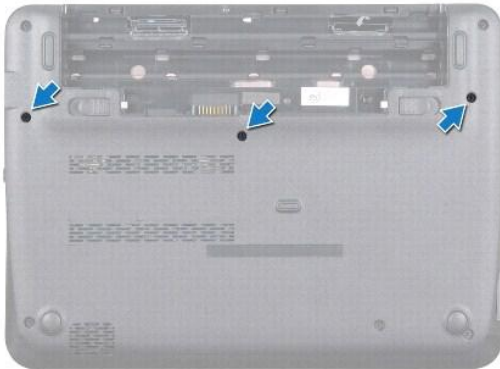
### Dell™ Inspiron™ 1018 Service Manual

- [Removing the Keyboard](#)
- [Replacing the Keyboard](#)

- WARNING:** Before working inside your computer, read the safety information that shipped with your computer. For additional safety best practices information, see the Regulatory Compliance Homepage at [www.dell.com/regulatory\\_compliance](http://www.dell.com/regulatory_compliance).
- CAUTION:** To avoid electrostatic discharge, ground yourself by using a wrist grounding strap or by periodically touching an unpainted metal surface (such as a connector on your computer).
- CAUTION:** Only a certified service technician should perform repairs on your computer. Damage due to servicing that is not authorized by Dell™ is not covered by your warranty.
- CAUTION:** To help prevent damage to the system board, remove the main battery (see [Removing the Battery](#)) before working inside the computer.
- 

## Removing the Keyboard

1. Follow the instructions in [Before You Begin](#).
2. Remove the battery (see [Removing the Battery](#)).
3. Remove the three screws that secure the keyboard to the computer base.



4. Turn the computer over and open the display as far as possible.
5. Slide a plastic scribe between the keyboard and palm rest, and pry and lift the keyboard to disengage it from the tabs on the palm rest.
6. Carefully lift the keyboard and slide the keyboard tabs out of the slots on the palm rest.

- CAUTION:** The keycaps on the keyboard are fragile, easily dislodged, and time-consuming to replace. Be careful when removing and handling the keyboard.
- CAUTION:** Be extremely careful when removing and handling the keyboard. Failure to do so could result in scratching the display panel.





1	keyboard tabs (4)	2	palm rest
3	keyboard	4	plastic scribe

- Turn the keyboard over and place it on the palm rest.
- Push the connector tabs up and disconnect the keyboard cable from the system board connector.



1	keyboard cable	2	connector tabs (2)
3	system board connector		


- Lift the keyboard off the palm rest.

## Replacing the Keyboard

- Follow the instructions in [Before You Begin](#).
- Place the keyboard upside down on the palm rest.
- Slide the keyboard cable into the system board connector and press the connector tabs into the connector to secure the cable.
- Slide the tabs on the keyboard into the slots on the palm rest and lower the keyboard into place.
- Gently press around the edges of the keyboard to secure the keyboard under the tabs on the palm rest.

6. Turn the computer over and replace the three screws that secure the keyboard to the computer base.

7. Replace the battery (see [Replacing the Battery](#)).

 **CAUTION:** Before turning on the computer, replace all screws and ensure that no stray screws remain inside the computer. Failure to do so may result in damage to the computer.

---

[Back to Contents Page](#)

## Status Lights Board

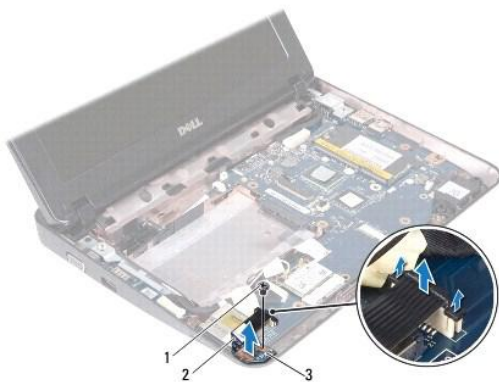
### Dell™ Inspiron™ 1018 Service Manual

- [Removing the Status Lights Board](#)
- [Replacing the Status Lights Board](#)

- WARNING:** Before working inside your computer, read the safety information that shipped with your computer. For additional safety best practices information, see the Regulatory Compliance Homepage at [www.dell.com/regulatory\\_compliance](http://www.dell.com/regulatory_compliance).
- CAUTION:** To avoid electrostatic discharge, ground yourself by using a wrist grounding strap or by periodically touching an unpainted metal surface (such as a connector on your computer).
- CAUTION:** Only a certified service technician should perform repairs on your computer. Damage due to servicing that is not authorized by Dell™ is not covered by your warranty.
- CAUTION:** To help prevent damage to the system board, remove the main battery (see [Removing the Battery](#)) before working inside the computer.
- 

## Removing the Status Lights Board

1. Follow the instructions in [Before You Begin](#).
2. Remove the battery (see [Removing the Battery](#)).
3. Remove the keyboard (see [Removing the Keyboard](#)).
4. Remove the hard-drive assembly (follow the instructions from [step 4](#) to [step 6](#) in [Removing the Hard Drive](#)).
5. Remove the palm rest assembly (see [Removing the Palm Rest Assembly](#)).
6. Remove the memory module (see [Removing the Memory Module](#)).
7. Push the connector-tab up and disconnect the status lights board cable from the system board connector.
8. Remove the screw that secures the status lights board to the computer base.
9. Lift the status lights board off the computer base.




1	screw	2	status lights board cable
3	status lights board		

---

## Replacing the Status Lights Board

1. Follow the instructions in [Before You Begin](#).

2. Place the status lights board on the computer base.
3. Replace the screw that secures the status lights board to the computer base.
4. Slide the status lights board cable into the system board connector and press the connector-tab down to secure the cable.
5. Replace the memory module (see [Replacing the Memory Module](#)).
6. Replace the palm rest assembly (see [Replacing the Palm Rest Assembly](#)).
7. Replace the hard-drive assembly (follow the instructions from [step 5](#) to [step 7](#) in [Replacing the Hard Drive](#)).
8. Replace the keyboard (see [Replacing the Keyboard](#)).
9. Replace the battery (see [Replacing the Battery](#)).

 **CAUTION:** Before turning on the computer, replace all screws and ensure that no stray screws remain inside the computer. Failure to do so may result in damage to the computer.

---

[Back to Contents Page](#)

[Back to Contents Page](#)

## Memory Module

### Dell™ Inspiron™ 1018 Service Manual

- [Removing the Memory Module](#)
- [Replacing the Memory Module](#)

**WARNING:** Before working inside your computer, read the safety information that shipped with your computer. For additional safety best practices information, see the Regulatory Compliance Homepage at [www.dell.com/regulatory\\_compliance](http://www.dell.com/regulatory_compliance).

**CAUTION:** To avoid electrostatic discharge, ground yourself by using a wrist grounding strap or by periodically touching an unpainted metal surface (such as a connector on your computer).

**CAUTION:** Only a certified service technician should perform repairs on your computer. Damage due to servicing that is not authorized by Dell™ is not covered by your warranty.

**CAUTION:** To help prevent damage to the system board, remove the main battery (see [Removing the Battery](#)) before working inside the computer.

You can increase your computer memory by installing memory modules on the system board. See "Specifications" in the *Setup Guide* that shipped with your computer or at [support.dell.com/manuals](http://support.dell.com/manuals) for information on the type of memory supported by your computer.

**NOTE:** Memory modules purchased from Dell are covered under your computer warranty.

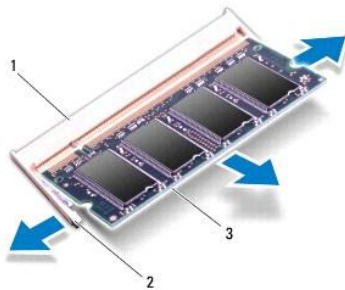
Your computer has one user-accessible SODIMM connector.

## Removing the Memory Module

1. Follow the instructions in [Before You Begin](#).
2. Remove the battery (see [Removing the Battery](#)).
3. Remove the keyboard (see [Removing the Keyboard](#)).
4. Remove the hard-drive assembly (follow the instructions from [step 4](#) to [step 6](#) in [Removing the Hard Drive](#)).
5. Remove the palm rest assembly (see [Removing the Palm Rest Assembly](#)).

**CAUTION:** To prevent damage to the memory-module connector, do not use tools to spread the memory module securing clips.

6. Use your fingertips to carefully spread apart the securing clips on each end of the memory-module connector until the memory module pops up.




1	memory-module connector	2	securing clips (2)
3	memory module		

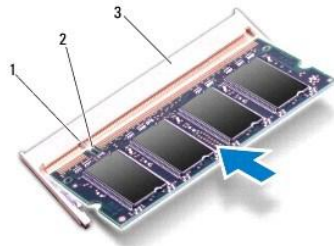
7. Remove the memory module from the memory-module connector.

---

## Replacing the Memory Module

1. Follow the instructions in [Before You Begin](#).
2. Align the notch in the memory module with the tab in the memory-module connector.
3. Slide the memory module firmly into the slot at a 45-degree angle, and press the memory module down until it clicks into place. If you do not hear the click, remove the memory module and reinstall it.

 **NOTE:** If the memory module is not installed properly, the computer may not boot.





1	tab	2	notch
3	memory-module connector		

4. Replace the palm rest assembly (see [Replacing the Palm Rest Assembly](#)).
5. Replace the hard-drive assembly (follow the instructions from [step 5](#) to [step 7](#) in [Replacing the Hard Drive](#)).
6. Replace the keyboard (see [Replacing the Keyboard](#)).
7. Replace the battery (see [Replacing the Battery](#)).
8. Connect the AC adapter to your computer and an electrical outlet.
9. Turn on the computer.

As the computer boots, it detects the additional memory and automatically updates the system configuration information.

To confirm the amount of memory installed in the computer:

Click **Start**  → **Control Panel** → **System and Security** → **System**.

 **CAUTION:** Before turning on the computer, replace all screws and ensure that no stray screws remain inside the computer. Failure to do so may result in damage to the computer.

---

[Back to Contents Page](#)

## Wireless Mini-Card

### Dell™ Inspiron™ 1018 Service Manual

- [Removing the Mini-Card](#)
- [Replacing the Mini-Card](#)

- WARNING:** Before working inside your computer, read the safety information that shipped with your computer. For additional safety best practices information, see the Regulatory Compliance Homepage at [www.dell.com/regulatory\\_compliance](http://www.dell.com/regulatory_compliance).
- CAUTION:** To avoid electrostatic discharge, ground yourself by using a wrist grounding strap or by periodically touching an unpainted metal surface (such as a connector on your computer).
- CAUTION:** Only a certified service technician should perform repairs on your computer. Damage due to servicing that is not authorized by Dell™ is not covered by your warranty.
- CAUTION:** To help prevent damage to the system board, remove the main battery (see [Removing the Battery](#)) before working inside the computer.
- NOTE:** Dell does not guarantee compatibility or provide support for Mini-Cards from sources other than Dell.

If you ordered a wireless Mini-Card with your computer, the card is already installed.

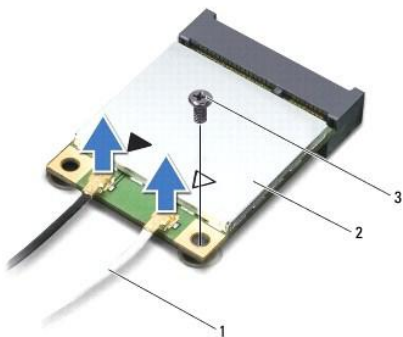
Your computer has one half Mini-Card slot that provides support for WLAN.

- NOTE:** Depending on the configuration of the computer when it was sold, the Mini-Card slot may or may not have a Mini-Card installed.

---

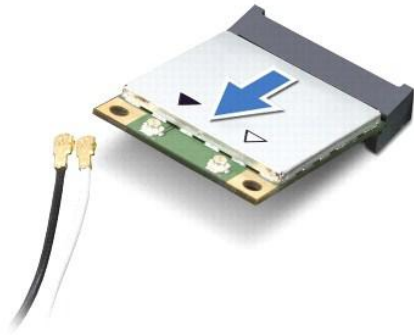
## Removing the Mini-Card

1. Follow the instructions in [Before You Begin](#).
2. Remove the battery (see [Removing the Battery](#)).
3. Remove the keyboard (see [Removing the Keyboard](#)).
4. Remove the hard-drive assembly (follow the instructions from [step 4](#) to [step 6](#) in [Removing the Hard Drive](#)).
5. Remove the palm rest assembly (see [Removing the Palm Rest Assembly](#)).
6. Disconnect the antenna cables from the Mini-Card.



1	antenna cables (2)	2	Mini-Card
3	screw		

7. Remove the screw that secures the Mini-Card to the system board.
8. Lift the Mini-Card out of the connector on the system board.



**CAUTION:** When the Mini-Card is not in the computer, store it in protective antistatic packaging. For more information, see "Protecting Against Electrostatic Discharge" in the safety information that shipped with your computer.

---

## Replacing the Mini-Card

1. Follow the instructions in [Before You Begin](#).
2. Remove the new Mini-Card from its packaging.

**CAUTION:** Use firm and even pressure to slide the card into place. If you use excessive force, you may damage the connector.

**CAUTION:** The connectors are keyed to ensure correct insertion. If you feel resistance, check the connectors on the card and on the system board, and realign the card.

3. Insert the Mini-Card connector at a 45-degree angle into the connector on the system board.
4. Press the other end of the Mini-Card down into the slot on the system board and replace the screw that secures the Mini-Card to the system board.
5. Connect the appropriate antenna cables to the Mini-Card you are installing. The following table provides the antenna cable color scheme for the Mini-Card supported by your computer.

Connectors on the Mini-Card	Antenna Cable Color Scheme
<b>WLAN (2 antenna cables)</b>	
Main WLAN (white triangle)	white
Auxiliary WLAN (black triangle)	black

6. Replace the palm rest assembly (see [Replacing the Palm Rest Assembly](#)).
7. Replace the hard-drive assembly (follow the instructions from [step 5](#) to [step 7](#) in [Replacing the Hard Drive](#)).
8. Replace the keyboard (see [Replacing the Keyboard](#)).
9. Replace the battery (see [Replacing the Battery](#)).

**CAUTION:** Before turning on the computer, replace all screws and ensure that no stray screws remain inside the computer. Failure to do so may result in damage to the computer.

10. Install the drivers and utilities for your computer, as required.

**NOTE:** If you are installing a communication card from a source other than Dell, you must install the appropriate drivers and utilities.

---





[Back to Contents Page](#)

## Palm Rest Assembly

Dell™ Inspiron™ 1018 Service Manual

- [Removing the Palm Rest Assembly](#)
- [Replacing the Palm Rest Assembly](#)

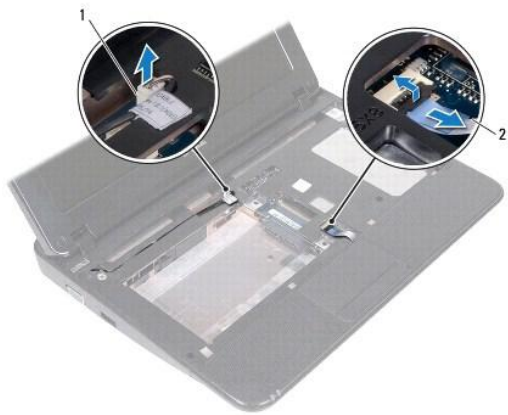
- WARNING:** Before working inside your computer, read the safety information that shipped with your computer. For additional safety best practices information, see the Regulatory Compliance Homepage at [www.dell.com/regulatory\\_compliance](http://www.dell.com/regulatory_compliance).
- CAUTION:** To avoid electrostatic discharge, ground yourself by using a wrist grounding strap or by periodically touching an unpainted metal surface (such as a connector on your computer).
- CAUTION:** Only a certified service technician should perform repairs on your computer. Damage due to servicing that is not authorized by Dell™ is not covered by your warranty.
- CAUTION:** To help prevent damage to the system board, remove the main battery (see [Removing the Battery](#)) before working inside the computer.
- 

### Removing the Palm Rest Assembly

1. Follow the instructions in [Before You Begin](#).
2. Remove the battery (see [Removing the Battery](#)).
3. Remove the three screws that secure the palm rest assembly to the computer base.



4. Remove the keyboard (see [Removing the Keyboard](#)).
  5. Remove the hard-drive assembly (follow the instructions from [step 4](#) to [step 6](#) in [Removing the Hard Drive](#)).
  6. Disconnect the power button cable from the connector on the system board.
- CAUTION:** Pull the pull-tab on the cable to avoid damage to the connectors when disconnecting a cable.
7. Lift the connector latch and pull the pull-tab to disconnect the touch pad cable from the connector on the system board.
  8. Remove the three screws that secure the palm rest assembly to the computer base.



- |   |                                    |   |                 |
|---|------------------------------------|---|-----------------|
| 1 | power button board cable connector | 2 | touch pad cable |
|---|------------------------------------|---|-----------------|

**CAUTION:** Carefully separate the palm rest assembly from the computer base to avoid damage to the palm rest assembly.

- Using your fingertips, gently ease the palm rest assembly from the computer base.
- Lift the palm rest assembly off the computer base.




- |   |            |
|---|------------|
| 1 | screws (3) |
|---|------------|

---

## Replacing the Palm Rest Assembly

- Follow the instructions in [Before You Begin](#).
- Align the palm rest assembly on the computer base and gently snap the palm rest assembly into place.
- Slide the touch pad cable into the connector on the system board and press down on the connector latch to secure the touch pad cable.
- Connect the power button cable to the connector on the system board.
- Replace the three screws that secure the palm rest assembly to the computer base.

6. Replace the hard-drive assembly (follow the instructions from [step 5](#) to [step 7](#) in [Replacing the Hard Drive](#)).
7. Replace the keyboard (see [Replacing the Keyboard](#)).
8. Replace the three screws that secure the palm rest assembly to the computer base.
9. Replace the battery (see [Replacing the Battery](#)).

 **CAUTION:** Before turning on the computer, replace all screws and ensure that no stray screws remain inside the computer. Failure to do so may result in damage to the computer.

---

[Back to Contents Page](#)

## Power Button Board

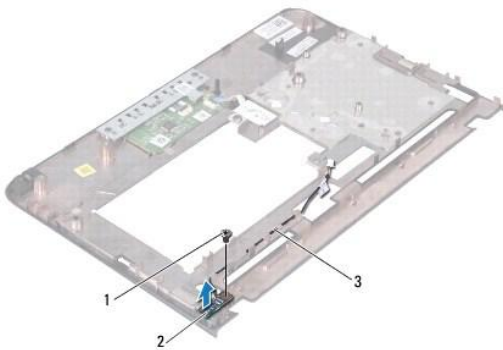
### Dell™ Inspiron™ 1018 Service Manual

- [Removing the Power Button Board](#)
- [Replacing the Power Button Board](#)

- ⚠ WARNING:** Before working inside your computer, read the safety information that shipped with your computer. For additional safety best practices information, see the Regulatory Compliance Homepage at [www.dell.com/regulatory\\_compliance](http://www.dell.com/regulatory_compliance).
- ⚠ CAUTION:** To avoid electrostatic discharge, ground yourself by using a wrist grounding strap or by periodically touching an unpainted metal surface (such as a connector on your computer).
- ⚠ CAUTION:** Only a certified service technician should perform repairs on your computer. Damage due to servicing that is not authorized by Dell™ is not covered by your warranty.
- ⚠ CAUTION:** To help prevent damage to the system board, remove the main battery (see [Removing the Battery](#)) before working inside the computer.
- 

## Removing the Power Button Board

1. Follow the instructions in [Before You Begin](#).
2. Remove the battery (see [Removing the Battery](#)).
3. Remove the keyboard (see [Removing the Keyboard](#)).
4. Remove the palm rest assembly (see [Removing the Palm Rest Assembly](#)).
5. Turn the palm rest assembly over.
6. Note the routing of the power button board cable and remove the cable from the routing guide on the palm rest assembly.
7. Remove the screw that secures the power button board to the palm rest assembly.
8. Lift the power button board off the palm rest assembly.




1	screw	2	power button board
3	power button board cable		

---

## Replacing the Power Button Board

1. Follow the instructions in [Before You Begin](#).
2. Place the power button board on the palm rest assembly and replace the screw that secures the power button board to the palm rest assembly.

3. Route the power button board cable through the routing guide on the palm rest assembly.
4. Replace the palm rest assembly (see [Replacing the Palm Rest Assembly](#)).
5. Replace the keyboard (see [Replacing the Keyboard](#)).
6. Replace the battery (see [Replacing the Battery](#)).

 **CAUTION:** Before turning on the computer, replace all screws and ensure that no stray screws remain inside the computer. Failure to do so may result in damage to the computer.

---

[Back to Contents Page](#)

## Speaker

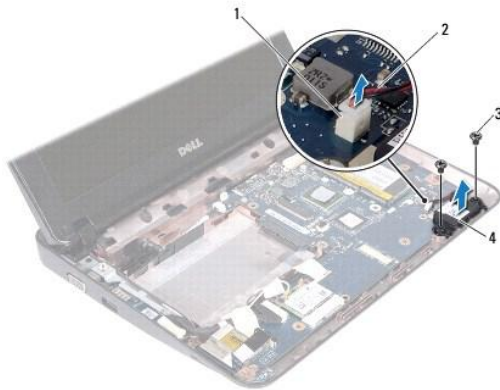
### Dell™ Inspiron™ 1018 Service Manual

- [Removing the Speaker](#)
- [Replacing the Speaker](#)

- WARNING:** Before working inside your computer, read the safety information that shipped with your computer. For additional safety best practices information, see the Regulatory Compliance Homepage at [www.dell.com/regulatory\\_compliance](http://www.dell.com/regulatory_compliance).
- CAUTION:** To avoid electrostatic discharge, ground yourself by using a wrist grounding strap or by periodically touching an unpainted metal surface (such as a connector on your computer).
- CAUTION:** Only a certified service technician should perform repairs on your computer. Damage due to servicing that is not authorized by Dell™ is not covered by your warranty.
- CAUTION:** To help prevent damage to the system board, remove the main battery (see [Removing the Battery](#)) before working inside the computer.
- 

## Removing the Speaker

1. Follow the instructions in [Before You Begin](#).
2. Remove the battery (see [Removing the Battery](#)).
3. Remove the keyboard (see [Removing the Keyboard](#)).
4. Remove the hard-drive assembly (follow the instructions from [step 4](#) to [step 6](#) in [Removing the Hard Drive](#)).
5. Remove the palm rest assembly (see [Removing the Palm Rest Assembly](#)).
6. Remove the memory module (see [Removing the Memory Module](#)).
7. Disconnect the speaker cable from the connector on the system board.
8. Remove the two screws that secure the speaker to the computer base.
9. Remove the speaker and the cable from the computer base.




1	speaker cable connector	2	speaker cable
3	screws (2)	4	speaker

---

## Replacing the Speaker

1. Follow the instructions in [Before You Begin](#).
2. Place the speaker on the computer base and connect the speaker cable to the connector on the system board.
3. Replace the two screws that secure the speaker to the computer base.
4. Replace the memory module (see [Replacing the Memory Module](#)).
5. Replace the palm rest assembly (see [Replacing the Palm Rest Assembly](#)).
6. Replace the hard-drive assembly (follow the instructions from [step 5](#) to [step 7](#) in [Replacing the Hard Drive](#)).
7. Replace the keyboard (see [Replacing the Keyboard](#)).
8. Replace the battery (see [Replacing the Battery](#)).

 **CAUTION:** Before turning on the computer, replace all screws and ensure that no stray screws remain inside the computer. Failure to do so may result in damage to the computer.

---

[Back to Contents Page](#)



[Back to Contents Page](#)

## Support Brackets

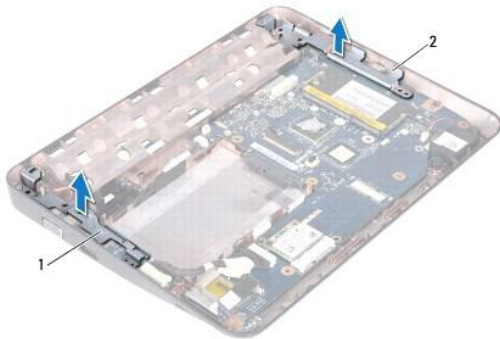
Dell™ Inspiron™ 1018 Service Manual

- [Removing the Support Brackets](#)
- [Replacing the Support Brackets](#)

- WARNING:** Before working inside your computer, read the safety information that shipped with your computer. For additional safety best practices information, see the Regulatory Compliance Homepage at [www.dell.com/regulatory\\_compliance](http://www.dell.com/regulatory_compliance).
- CAUTION:** To avoid electrostatic discharge, ground yourself by using a wrist grounding strap or by periodically touching an unpainted metal surface (such as a connector on your computer).
- CAUTION:** Only a certified service technician should perform repairs on your computer. Damage due to servicing that is not authorized by Dell™ is not covered by your warranty.
- CAUTION:** To help prevent damage to the system board, remove the main battery (see [Removing the Battery](#)) before working inside the computer.
- 

### Removing the Support Brackets

1. Follow the instructions in [Before You Begin](#).
2. Remove the battery (see [Removing the Battery](#)).
3. Remove the keyboard (see [Removing the Keyboard](#)).
4. Remove the hard-drive assembly (follow the instructions from [step 4](#) to [step 6](#) in [Removing the Hard Drive](#)).
5. Remove the palm rest assembly (see [Removing the Palm Rest Assembly](#)).
6. Remove the memory module (see [Removing the Memory Module](#)).
7. Remove the middle cover (see [Removing the Middle Cover](#)).
8. Remove the display assembly (see [Removing the Display Assembly](#)).
9. Lift the right and left support brackets off the computer base.




1	left support bracket	2	right support bracket
---	----------------------	---	-----------------------

---

### Replacing the Support Brackets

1. Follow the instructions in [Before You Begin](#).

2. Using the alignment post, place left and right support brackets on the computer base.
3. Replace the display assembly (see [Replacing the Display Assembly](#)).
4. Replace the middle cover (see [Replacing the Middle Cover](#)).
5. Replace the memory module (see [Replacing the Memory Module](#)).
6. Replace the palm rest assembly (see [Replacing the Palm Rest Assembly](#)).
7. Replace the hard-drive assembly (follow the instructions from [step 5](#) to [step 7](#) in [Replacing the Hard Drive](#)).
8. Replace the keyboard (see [Replacing the Keyboard](#)).
9. Replace the battery (see [Replacing the Battery](#)).

 **CAUTION:** Before turning on the computer, replace all screws and ensure that no stray screws remain inside the computer. Failure to do so may result in damage to the computer.

---






[Back to Contents Page](#)

[Back to Contents Page](#)

## System Board

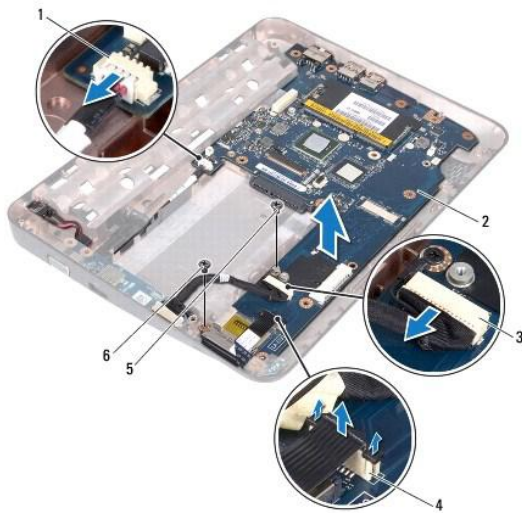
Dell™ Inspiron™ 1018 Service Manual

- [Removing the System Board](#)
- [Replacing the System Board](#)
- [Entering the Service Tag in the BIOS](#)

-  **WARNING:** Before working inside your computer, read the safety information that shipped with your computer. For additional safety best practices information, see the Regulatory Compliance Homepage at [www.dell.com/regulatory\\_compliance](http://www.dell.com/regulatory_compliance).
-  **CAUTION:** To avoid electrostatic discharge, ground yourself by using a wrist grounding strap or by periodically touching an unpainted metal surface (such as a connector on your computer).
-  **CAUTION:** Only a certified service technician should perform repairs on your computer. Damage due to servicing that is not authorized by Dell™ is not covered by your warranty.
-  **CAUTION:** To help prevent damage to the system board, remove the main battery (see [Removing the Battery](#)) before working inside the computer.
-  **CAUTION:** Handle components and cards by their edges, and avoid touching pins and contacts.
- 

## Removing the System Board

1. Follow the instructions in [Before You Begin](#).
2. Remove any installed card or blank from the Media Card reader slot.
3. Remove the battery (see [Removing the Battery](#)).
4. Remove the keyboard (see [Removing the Keyboard](#)).
5. Remove the hard-drive assembly (follow the instructions from [step 4](#) to [step 6](#) in [Removing the Hard Drive](#)).
6. Remove the palm rest assembly (see [Removing the Palm Rest Assembly](#)).
7. Remove the memory module (see [Removing the Memory Module](#)).
8. Remove the Mini-Card (see [Removing the Mini-Card](#)).
9. Remove the middle cover (see [Removing the Middle Cover](#)).
10. Remove the display assembly (see [Removing the Display Assembly](#)).
11. Remove the support brackets (see [Removing the Support Brackets](#)).
12. Disconnect the AC adapter connector cable, status lights board cable, and I/O board cable from their connectors on the system board.
13. Remove the grounding screw that secures the I/O board cable to the system board.



1	AC adapter cable connector	2	system board
3	I/O board cable connector	4	status lights board cable connector
5	I/O board cable grounding screw	6	screw


14. Remove the speaker (see [Removing the Speaker](#)).
15. Remove the screw that secures the system board to the computer base.
16. Carefully ease the connectors on the system board out of the slots in the computer base, and lift the system board out of the computer base.

---


## Replacing the System Board

1. Follow the instructions in [Before You Begin](#).
2. Align the connectors on the system board with the slots on the computer base and place it on the computer base.
3. Replace the screw that secures the system board to the computer base.
4. Replace the speaker (see [Replacing the Speaker](#)).
5. Connect the AC adapter connector cable, status lights board cable, and I/O board cable to their connectors on the system board.
6. Replace the grounding screw that secures the I/O board cable to the system board.
7. Replace the support brackets (see [Replacing the Support Brackets](#)).
8. Replace the display assembly (see [Replacing the Display Assembly](#)).
9. Replace the middle cover (see [Replacing the Middle Cover](#)).
10. Replace the Mini-Card (see [Replacing the Mini-Card](#)).
11. Replace the memory module (see [Replacing the Memory Module](#)).
12. Replace the palm rest assembly (see [Replacing the Palm Rest Assembly](#)).
13. Replace the hard-drive assembly (follow the instructions from [step 5](#) to [step 7](#) in [Replacing the Hard Drive](#)).
14. Replace the keyboard (see [Replacing the Keyboard](#)).

15. Replace the battery (see [Replacing the Battery](#)).
16. Replace any card removed from the Media Card reader slot.

 **CAUTION:** Before turning on the computer, replace all screws and ensure that no stray screws remain inside the computer. Failure to do so may result in damage to the computer.

17. Turn on the computer.

 **NOTE:** After you have replaced the system board, enter the computer Service Tag into the BIOS of the replacement system board.

18. Enter the service tag (see [Entering the Service Tag in the BIOS](#)).
- 

## Entering the Service Tag in the BIOS

1. Ensure that the AC adapter is plugged in and that the main battery is installed properly.
  2. Turn on the computer.
  3. Press <F2> during POST to enter the system setup program.
  4. Navigate to the security tab and enter the service tag in the **Set Service Tag** field.
- 

[Back to Contents Page](#)

[Back to Contents Page](#)

## **Dell™ Inspiron™ 1018 Service Manual**



**NOTE:** A NOTE indicates important information that helps you make better use of your computer.



**CAUTION:** A CAUTION indicates potential damage to hardware or loss of data if instructions are not followed.



**WARNING:** A WARNING indicates a potential for property damage, personal injury, or death.

Information in this document is subject to change without notice.  
© 2010 Dell Inc. All rights reserved.

Reproduction of these materials in any manner whatsoever without the written permission of Dell Inc. is strictly forbidden.

Trademarks used in this text: *Dell*, the *DELL* logo, and *Inspiron* are trademarks of Dell Inc.; *Bluetooth* is a registered trademark owned by Bluetooth SIG, Inc. and is used by Dell under license; *Microsoft*, *Windows*, and the *Windows* start button logo are either trademarks or registered trademarks of Microsoft Corporation in the United States and/or other countries.

Other trademarks and trade names may be used in this document to refer to either the entities claiming the marks and names or their products. Dell Inc. disclaims any proprietary interest in trademarks and trade names other than its own.

July 2010 Rev. A00

---

[Back to Contents Page](#)