

# Dell™ Inspiron™ 1318 Service Manual

[Before You Begin](#)

[Hard Drive](#)

[Module Cover](#)

[Memory Module](#)

[Processor Heat Sink](#)

[Processor](#)

[Coin-Cell Battery](#)

[WLAN Card](#)

[Center Control Cover](#)

[Keyboard](#)

[Power Board](#)

[Internal Card With Bluetooth® Wireless Technology](#)

[Display](#)

[Camera \(Optional\)](#)

[Palm Rest](#)

[Optical Drive](#)

[ExpressCard Reader](#)

[Speaker](#)

[System Board](#)

[Wireless Switch Assembly](#)




[Charger Board](#)

[Battery Latch Assembly](#)

[Flashing the BIOS](#)

---

## Notes, Notices, and Cautions

-  **NOTE:** A NOTE indicates important information that helps you make better use of your computer.
-  **NOTICE:** A NOTICE indicates either potential damage to hardware or loss of data and tells you how to avoid the problem.
-  **CAUTION:** A CAUTION indicates a potential for property damage, personal injury, or death.

---

Information in this document is subject to change without notice.  
© 2008 Dell Inc. All rights reserved.

Reproduction of these materials in any manner whatsoever without the written permission of Dell Inc. is strictly forbidden.

Trademarks used in this text: *Dell*, the *DELL* logo, and *Inspiron* are trademarks of Dell Inc.; *Bluetooth* is a registered trademark owned by Bluetooth SIG, Inc. and is used by Dell under license; *Microsoft*, *Windows*, *Windows Vista*, and *Windows Vista start button* are either trademarks or registered trademarks of Microsoft Corporation in the United States and/or other countries.

Other trademarks and trade names may be used in this document to refer to either the entities claiming the marks and names or their products. Dell Inc. disclaims any proprietary interest in trademarks and trade names other than its own.

July 2008 Rev. A00

Model PP25L

## Module Cover

### Dell™ Inspiron™ 1318 Service Manual

- [Removing the Module Cover](#)
- [Replacing the Module Cover](#)

**⚠ CAUTION:** Before you begin any of the procedures in this section, follow the safety instructions shipped with your computer.

**🔧 NOTICE:** To avoid electrostatic discharge, ground yourself by using a wrist grounding strap or by periodically touching an unpainted metal surface (such as a connector on the back of the computer).

---

## Removing the Module Cover

1. Follow the procedures in [Before You Begin](#).
2. Remove the M2.5 x 5-mm screw and loosen the three captive screws on the cover labeled "M".
3. Using a flat-blade screwdriver, carefully pry open the module cover.



1	M2.5 x 5-mm screw	2	module cover
3	captive screws (3)		

4. Lift the module cover away from the computer.
- 

## Replacing the Module Cover

1. Replace the module cover and tighten the three captive screws.
  2. Replace the M2.5 x 5-mm screw.
  3. Slide the battery into the battery bay, until it clicks into place.
-

## Battery Latch Assembly

### Dell™ Inspiron™ 1318 Service Manual

- [Removing the Battery Latch Assembly](#)
- [Replacing the Battery Latch Assembly](#)

**⚠ CAUTION:** Before performing the following procedures, follow the safety instructions shipped with your computer.

**👉 NOTICE:** To avoid electrostatic discharge, ground yourself by using a wrist grounding strap or by periodically touching a connector on the back panel of the computer.

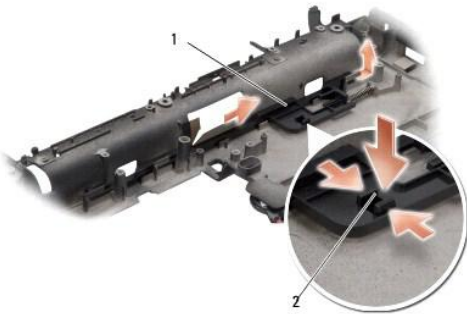
---

## Removing the Battery Latch Assembly

1. Remove the system board (see [System Board](#)).
2. Remove the charger board (see [Charger Board](#)).

**👉 NOTICE:** Before you remove the battery release button, observe the orientation of the button to ensure proper installation when the button is replaced.

3. Press the plastic grip together to release the latch button.
4. Slide the battery latch assembly to the right to remove it.



1	latch assembly	2	plastic grip
---	----------------	---	--------------

---

## Replacing the Battery Latch Assembly

**👉 NOTICE:** Ensure the battery latch assembly is properly oriented. The indent for the button should face up when installing the assembly.

1. Replace the spring and slide the battery latch assembly into place.
  2. Replace the latch button.
  3. Replace the charger board (see [Charger Board](#)).
  4. Replace the system board (see [System Board](#)).
  5. Slide the battery into the battery bay, until it clicks into place.
-

[Back to Contents Page](#)

## Before You Begin

### Dell™ Inspiron™ 1318 Service Manual

- [Recommended Tools](#)
- [Turning Off Your Computer](#)
- [Before Working Inside Your Computer](#)

This section provides procedures for removing and installing the components in your computer. Unless otherwise noted, each procedure assumes that the following conditions exist:

- 1 You have performed the steps in [Turning Off Your Computer](#) and [Before Working Inside Your Computer](#).
- 1 You have read the safety information shipped with your computer.
- 1 A component can be replaced or—if purchased separately—installed by performing the removal procedure in reverse order.

---

## Recommended Tools

The procedures in this document may require the following tools:

- 1 Small flat-blade screwdriver
- 1 Phillips screwdriver
- 1 Flash BIOS update program CD

---

## Turning Off Your Computer

➡ **NOTICE:** To avoid losing data, save and close all open files and exit all open programs before you turn off your computer.

1. Save and close all open files and exit all open programs.
2. Click the Windows Vista Start button, in the lower-left corner of the desktop, click the arrow in the lower-right corner of the Start menu, and then click **Shut Down**.

The computer turns off after the operating system shutdown process is complete.

3. Ensure that the computer and all attached devices are turned off. If your computer and attached devices did not automatically turn off when you shut down your operating system, press and hold the power button until they turn off.

---

## Before Working Inside Your Computer

Use the following safety guidelines to help protect your computer from potential damage and to help to ensure your own personal safety.

⚠ **CAUTION:** Before you begin any of the procedures in this section, follow the safety instructions shipped with your computer.

➡ **NOTICE:** Handle components and cards with care. Do not touch the components or contacts on a card. Hold a card by its edges or by its metal mounting bracket. Hold a component such as a processor by its edges, not by its pins.

➡ **NOTICE:** Only a certified service technician should perform repairs on your computer. Damage due to servicing that is not authorized by Dell is not covered by your warranty.

➡ **NOTICE:** When you disconnect a cable, pull on its connector or on its pull-tab, not on the cable itself. Some cables have connectors with locking tabs; if you are disconnecting this type of cable, press in on the locking tabs before you disconnect the cable. As you pull connectors apart, keep them evenly aligned to avoid bending any connector pins. Also, before you connect a cable, ensure that both connectors are correctly oriented and aligned.

➡ **NOTICE:** To avoid damaging the computer, perform the following steps before you begin working inside the computer.

1. Ensure that the work surface is flat and clean to prevent the computer cover from being scratched.
2. Turn off your computer (see [Turning Off Your Computer](#)).

➡ **NOTICE:** To disconnect a network cable, first unplug the cable from your computer and then unplug the cable from the network device.

3. Disconnect all telephone or network cables from the computer.

4. Disconnect your computer and all attached devices from their electrical outlets.

5. Close the display and turn the computer upside down on a flat work surface.

**NOTICE:** To avoid damaging the system board, you must remove the main battery before you service the computer.

6. Remove the main battery:

- a. Slide the battery-bay release latch on the bottom of the computer.
- b. Remove the battery from the battery bay.



1	battery	2	battery-bay release latch
---	---------	---	---------------------------

7. Press the power button to ground the system board.

---

[Back to Contents Page](#)

## Flashing the BIOS

### Dell™ Inspiron™ 1318 Service Manual

• [Flashing the BIOS From a CD](#)


• [Flashing the BIOS From the Hard Drive](#)

If a BIOS-update program CD is provided with the new system board, flash the BIOS from the CD. If you do not have a BIOS-update program CD, flash the BIOS from the hard drive.

---

## Flashing the BIOS From a CD

1. Ensure that the AC adapter is plugged in and that the main battery is installed properly.

 **NOTE:** If you use a BIOS-update program CD to flash the BIOS, set up the computer to boot from a CD before inserting the CD.

2. Insert the BIOS-update program CD, and restart the computer.

Follow the instructions that appear on the screen. The computer continues to boot and updates the new BIOS. When the flash update is complete, the computer will automatically reboot.

3. Press <F2> during POST to enter the system setup program.
  4. Press <Alt> <f> to reset the computer defaults.
  5. Press <Esc>, select **Save changes and reboot**, and press <Enter> to save configuration changes.
  6. Remove the BIOS-update program CD from the drive and restart the computer.
- 

## Flashing the BIOS From the Hard Drive

1. Ensure that the AC adapter is plugged in, the main battery is properly installed, and a network cable is attached.
  2. Turn on the computer.
  3. Locate the latest BIOS update file for your computer at [support.dell.com](http://support.dell.com).
  4. Click **Download Now** to download the file.
  5. If the **Export Compliance Disclaimer** window appears, click **Yes, I Accept this Agreement**.  
The **File Download** window appears.
  6. Click **Save this program to disk** and then click **OK**.  
The **Save In** window appears.
  7. Click the down arrow to view the **Save In** menu, select **Desktop**, and then click **Save**.  
The file downloads to your desktop.
  8. Click **Close** if the **Download Complete** window appears.  
The file icon appears on your desktop and is titled the same as the downloaded BIOS update file.
  9. Double-click the file icon on the desktop and follow the instructions on the screen.
-

## Internal Card With Bluetooth® Wireless Technology

### Dell™ Inspiron™ 1318 Service Manual

- [Removing the Internal Card With Bluetooth Wireless Technology](#)
- [Replacing the Internal Card With Bluetooth Wireless Technology](#)

- ⚠ **CAUTION:** Before you begin any of the procedures in this section, follow the safety instructions shipped with your computer.
- ➡ **NOTICE:** To avoid electrostatic discharge, ground yourself by using a wrist grounding strap or by periodically touching an unpainted metal surface (such as a connector on the back of the computer).
- ➡ **NOTICE:** To help prevent damage to the system board, you must remove the battery from the battery bay before you begin working inside the computer.

If you ordered an internal card with Bluetooth wireless technology with your computer, it is already installed.

---

## Removing the Internal Card With Bluetooth Wireless Technology

1. Follow the procedures in [Before You Begin](#).
2. Remove the center control cover (see [Center Control Cover](#)).
3. Remove the keyboard (see [Keyboard](#)).
4. Remove the adhesive tape that secures the internal card with Bluetooth wireless technology to the computer.
- ➡ **NOTICE:** Carefully note the routing of the cable before you disconnect it, so that you route the cable correctly. An incorrectly routed cable could lead to computer problems.
5. Slide and lift the card out of the card compartment.
6. Disconnect the cable from the card connector.



1	adhesive tape	2	cable
3	internal card with Bluetooth wireless technology		

---

## Replacing the Internal Card With Bluetooth Wireless Technology

1. Connect the cable to the card connector.
2. Slide the card into the card compartment and route the cable.
3. Replace the keyboard (see [Keyboard](#)).
4. Replace the center control panel (see [Center Control Cover](#)).
5. Slide the battery into the battery bay, until it clicks into place.





## Camera (Optional)

### Dell™ Inspiron™ 1318 Service Manual

- [Removing the Camera](#)
- [Replacing the Camera](#)

**⚠ CAUTION:** Before working inside your computer, follow the safety instructions shipped with your computer.

**🔧 NOTICE:** To avoid electrostatic discharge, ground yourself by using a wrist grounding strap or by periodically touching an unpainted metal surface (such as a connector on the back of the computer).

---

## Removing the Camera

1. Follow the instructions in [Before You Begin](#).
2. Remove the display assembly (see [Display](#)).
3. Remove the display bezel (see [Display](#)).
4. Remove the display panel (see [Display](#)).
5. Remove the two M2 x 3-mm screws that secure the camera.
6. Disconnect the camera cable from the camera cable connector.



1	camera cable connector	2	camera	3	M2 x 3-mm screws (2)
---	------------------------	---	--------	---	----------------------

7. Remove the camera.
- 

## Replacing the Camera

1. Connect the camera cable to the camera cable connector.
2. Align the camera with the screw holes on the display frame.
3. Replace the two M2 x 3-mm screws that secure the camera to the display frame.
4. Replace the display panel (see [Display](#)).
5. Replace the display bezel (see [Display](#)).
6. Replace the display assembly (see [Display](#)).
7. Slide the battery into the battery bay, until it clicks into place.

---

[Back to Contents Page](#)

[Back to Contents Page](#)

## Charger Board

Dell™ Inspiron™ 1318 Service Manual

- [Removing the Charger Board](#)
- [Replacing the Charger Board](#)

**⚠ CAUTION:** Before performing the following procedures, follow the safety instructions shipped with your computer.

**🔧 NOTICE:** To avoid electrostatic discharge, ground yourself by using a wrist grounding strap or by periodically touching a connector on the back panel of the computer.

---

### Removing the Charger Board

1. Follow the procedures in [Before You Begin](#).
2. Remove the system board (see [System Board](#)).
3. Remove the screw that secures the charger board to the base of the computer.



1	M2 x 3-mm screw	2	charger board
---	-----------------	---	---------------

4. Lift the charger board away from the base of the computer.
- 

### Replacing the Charger Board

1. Align the screw hole on the charger board with the screw hole on the base of the computer.
  2. Replace the screw that secures the charger board to the base of the computer.
  3. Replace the system board (see [System Board](#)).
  4. Slide the battery into the battery bay, until it clicks into place.
- 

[Back to Contents Page](#)

[Back to Contents Page](#)

## Coin-Cell Battery

Dell™ Inspiron™ 1318 Service Manual

- [Removing the Coin-Cell Battery](#)
- [Replacing the Coin-Cell Battery](#)

**⚠ CAUTION:** Before you begin any of the procedures in this section, follow the safety instructions shipped with your system.

**➡ NOTICE:** To avoid electrostatic discharge, ground yourself by using a wrist grounding strap or by periodically touching an unpainted metal surface (such as a connector on the back of the computer).

**➡ NOTICE:** To help prevent damage to the system board, you must remove the battery from the battery bay before you begin working inside the computer.

---

### Removing the Coin-Cell Battery

1. Follow the procedures in [Before You Begin](#).
2. Remove the module cover (see [Module Cover](#)).
3. The battery is glued to the computer, use a plastic scribe to pry the coin-cell battery from the slot.
4. Disconnect the coin-cell battery cable from the system board connector.



1	coin-cell battery cable connector	2	coin-cell battery
---	-----------------------------------	---	-------------------

---

### Replacing the Coin-Cell Battery

1. Connect the coin-cell battery cable to the system board connector.
  2. Peel off the adhesive on the coin-cell battery and adhere it to the system board.
  3. Replace the module cover (see [Module Cover](#)).
  4. Slide the battery into the battery bay, until it clicks into place.
- 

[Back to Contents Page](#)

## Processor

### Dell™ Inspiron™ 1318 Service Manual

- [Removing the Processor](#)
- [Replacing the Processor](#)

**⚠ CAUTION:** Before working inside your computer, follow the safety instructions shipped with your computer.

**➡ NOTICE:** To avoid electrostatic discharge, ground yourself by using a wrist grounding strap or by periodically touching an unpainted metal surface (such as a connector on the back of the computer).

---

## Removing the Processor

- ➡ **NOTICE:** To prevent intermittent contact between the ZIF-socket cam screw and the processor when removing or replacing the processor, press to apply slight pressure to the center of the processor while turning the cam screw.
- ➡ **NOTICE:** To avoid damage to the processor, hold the screwdriver perpendicular to the processor when turning the cam screw.

1. Follow the instructions in [Before You Begin](#).
2. Remove the processor heat sink (see [Processor Heat Sink](#)).
3. To loosen the ZIF socket, use a small, flat-blade screwdriver and rotate the ZIF-socket cam screw counterclockwise until it comes to the cam stop.

The ZIF-socket cam screw secures the processor to the system board. Make a note of the arrow on the ZIF-socket cam screw.



1	processor	2	pin-1 corner of processor	3	ZIF socket
4	ZIF-socket cam screw				

➡ **NOTICE:** To ensure maximum cooling for the processor, do not touch the heat transfer areas on the processor heat sink. The oils in your skin can reduce the heat transfer capability of the thermal pads.

➡ **NOTICE:** When removing the processor, pull it straight up. Be careful not to bend the pins on the processor.

4. Lift the processor from the ZIF socket.
- 


## Replacing the Processor

➡ **NOTICE:** Ensure that the cam lock is in the fully open position before seating the processor. Seating the processor properly in the ZIF socket does not require force.

 **NOTICE:** A processor that is not properly seated can result in an intermittent connection or permanent damage to the processor and the ZIF socket.

1. Align the pin-1 corner of the processor so that it points to the triangle on the ZIF socket, and insert the processor into the ZIF socket.

When the processor is correctly seated, all four corners are aligned at the same height. If one or more corners of the processor are higher than the others, the processor is not seated correctly.

 **NOTICE:** To prevent intermittent contact between the ZIF-socket cam screw and the processor when removing or replacing the processor, press to apply slight pressure to the center of the processor while turning the cam screw.

2. Tighten the ZIF socket by turning the ZIF-socket cam screw clockwise to secure the processor to the system board.
3. Peel the backing off the thermal pad and adhere the thermal pad to the portion of the processor heat sink that covers the processor.
4. Replace the processor heat sink (see [Processor Heat Sink](#)).
5. Update the BIOS using a flash BIOS-update program CD (see [Flashing the BIOS](#)).

---

[Back to Contents Page](#)

## Processor Heat Sink

### Dell™ Inspiron™ 1318 Service Manual

- [Removing the Processor Heat Sink](#)
- [Replacing the Processor Heat Sink](#)

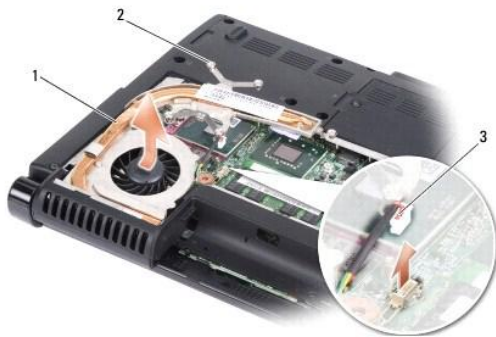
**⚠ CAUTION:** Before working inside your computer, follow the safety instructions shipped with your computer.

**🔌 NOTICE:** To avoid electrostatic discharge, ground yourself by using a wrist grounding strap or by periodically touching an unpainted metal surface (such as a connector on the back of the computer).

---

## Removing the Processor Heat Sink

1. Follow the instructions in [Before You Begin](#).
2. Remove the module cover (see [Module Cover](#)).
3. Loosen the five captive screws that secure the processor heat sink to the system board.



1	processor heat sink	2	captive screws (5)
3	fan connector		

4. Disconnect the fan connector from the system board connector.

**🔌 NOTE:** The fan is a part of the processor heat sink.

5. Lift the processor heat sink out of the computer by sliding it away from the bracket.
- 

## Replacing the Processor Heat Sink

**🔌 NOTE:** The original thermal pad can be reused if the original processor and processor heat sink are reinstalled together. If either the processor or the processor heat sink is replaced, use the thermal pad provided in the kit to ensure that thermal conductivity is achieved.

**🔌 NOTE:** This procedure assumes that you have already removed the processor heat sink and are ready to replace it.

1. Peel the backing off the thermal pad and adhere the pad to the portion of the processor heat sink that covers the processor.
2. Slide the processor heat sink under the bracket and align the five captive screws with the screw holes on the system board.
3. Tighten the five captive screws.
4. Connect the fan connector to the system board connector.
5. Replace the module cover (see [Module Cover](#)).
6. Slide the battery into the battery bay, until it clicks into place.



---

[Back to Contents Page](#)

[Back to Contents Page](#)

## Display

### Dell™ Inspiron™ 1318 Service Manual

- [Removing the Display Assembly](#)
- [Replacing the Display Assembly](#)
- [Removing the Display Bezel](#)
- [Replacing the Display Bezel](#)
- [Removing the Display Panel](#)
- [Replacing the Display Panel](#)
- [Removing the Display Panel Cable](#)
- [Replacing the Display Panel Cable](#)

**⚠ CAUTION:** Before you begin any of the procedures in this section, follow the safety instructions shipped with your computer.

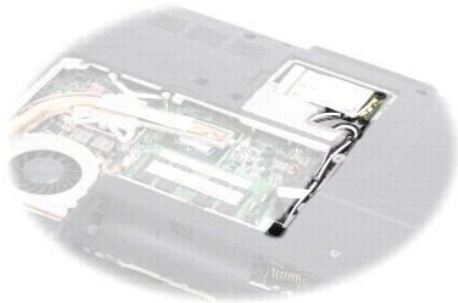
**🔌 NOTICE:** To avoid electrostatic discharge, ground yourself by using a wrist grounding strap or by periodically touching an unpainted metal surface (such as a connector on the back of the computer).

**🔌 NOTICE:** To help prevent damage to the system board, you must remove the battery from the battery bay before you begin working inside the computer.

---

## Removing the Display Assembly


1. Follow the instructions in "Before You Begin" on page 9.
2. Remove the memory module(s) (see [Memory Module](#)).
3. Remove the WLAN card (see [WLAN Card](#)).
4. Make note of the cable routing and carefully remove the antenna cables from their routing guides. Pull the cables with their connectors through the system board so that they are clear of the computer base.



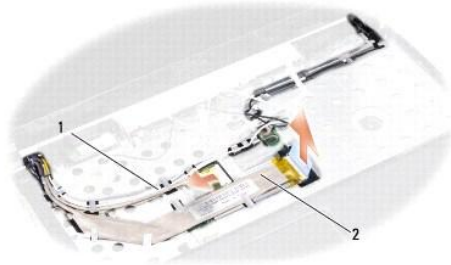
5. Remove the two M2.5 x 5-mm screws from the computer base.



6. Remove the keyboard (see [Keyboard](#)).

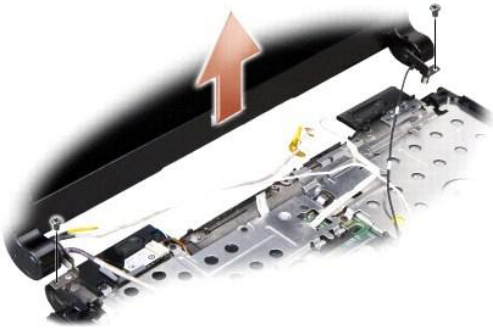
 **NOTE:** Note how the display cable and the camera cable have been routed through their routing guides.

7. Pull the display cable tab to disconnect the display cable from the system board connector.
8. Disconnect the camera cable from the system board connector.



1	camera cable	2	display cable
---	--------------	---	---------------

9. Make note of the cable routing and carefully dislodge the antenna cables and the rest of the cables from their routing guides. Pull the cables away, so that they are clear of the palm rest.
10. Remove the two M2.5 x 5-mm screws from either side of the display assembly.



11. Lift and remove the display assembly from the computer base.

---

## Replacing the Display Assembly

1. Route and connect the display cable to the connector on the system board.
2. Route and connect the camera cable to the connector on the system board.
3. Carefully route the WLAN antenna cables into their routing guides on the palm rest and through the computer base.
4. Replace the two M2.5 x 5-mm screws on each side of the display assembly.
5. Replace the keyboard (see [Keyboard](#)).

6. Turn the computer over and replace the two M2.5 x 5-mm screws on the computer base.
  7. Carefully route the WLAN card antenna cables through their routing guides and connect them to the WLAN card.
  8. Reconnect the WLAN card if applicable (see [WLAN Card](#)).
  9. Replace the memory module(s) (see [Memory Module](#)).
- 

## Removing the Display Bezel

**NOTICE:** The display bezel is extremely fragile. Be careful when removing it to prevent damaging the bezel.

1. Remove the display assembly (see [Display](#)).
2. Using your fingertips, carefully pry up the inside edge of the display bezel.



3. Remove the display bezel.
- 

## Replacing the Display Bezel

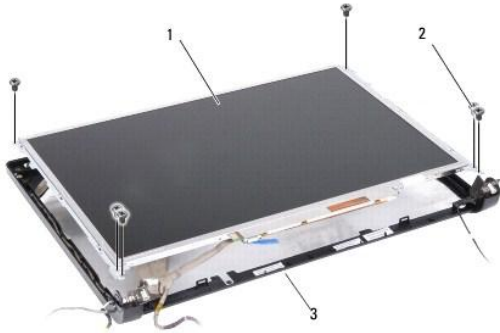
Align the display bezel over the display panel, and gently snap into place.

---

## Removing the Display Panel

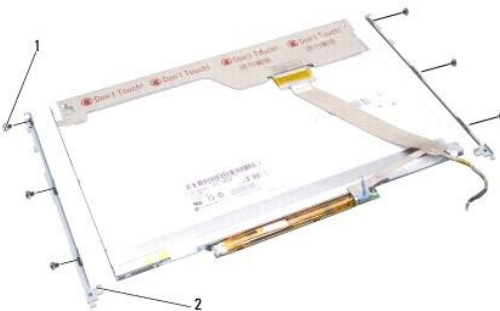
1. Remove the display assembly (see [Display](#)).
2. Remove the display bezel (see [Display](#)).
3. Remove the six screws securing the display panel.

**NOTE:** Note how the cables have been routed to the display panel.



1	display panel	2	M 2.5 x 5 mm screws (6)
2	display panel frame		

4. Remove the display panel.
5. Remove the six screws (three on each side) that secure the display panel brackets to the display panel.



1	M2 x 3-mm screws (6)	2	display panel brackets (2)
---	----------------------	---	----------------------------

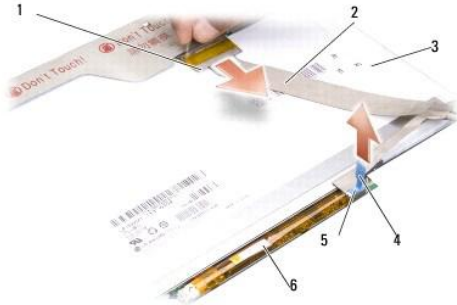
---

## Replacing the Display Panel

1. Align the display panel brackets with the display panel.
  2. Replace the six screws that secure the display panel brackets to each side of the display panel.
  3. Align the display panel with the display panel frame and replace the six screws.
  4. Route the cables back through their routing channels.
  5. Replace the display bezel (see [Display](#)).
  6. Replace the display assembly (see [Display](#)).
- 

## Removing the Display Panel Cable

1. Remove the display assembly (see [Display](#)).
2. Remove the display bezel (see [Display](#)).
3. Remove the display panel (see [Display](#)).
4. Turn over the display panel, and place it on a clean surface.
5. Gently pull the tab on the flex cable to disconnect the flex cable from the connector on the inverter board.
6. Lift the tape to disconnect the flex cable from the connector on the back of the display panel.



1	top flex cable connector	2	flex cable
3	back of display panel	4	pull tab
5	bottom flex cable connector	6	inverter board

---

## Replacing the Display Panel Cable

**NOTICE:** To avoid damage to the inverter board when replacing the flex cable, gently support the bottom of the inverter board with one finger as you reseal the flex cable. Do not bend the inverter board.

1. Connect the flex cable to the connector on the inverter board.
2. Connect the other end of the flex cable to the connector on the back of the display panel and adhere the tape back into position.
3. Replace the display panel (see [Display](#)).
4. Replace the display bezel (see [Display](#)).
5. Replace the display assembly (see [Display](#)).

---

[Back to Contents Page](#)

## Hard Drive

### Dell™ Inspiron™ 1318 Service Manual

- [Removing the Hard Drive](#)
- [Replacing the Hard Drive](#)

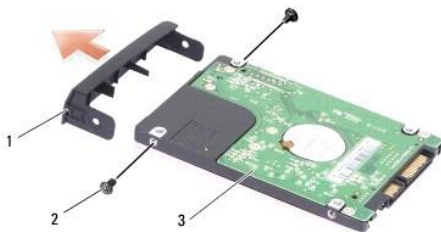
- ⚠ **CAUTION:** Before you begin any of the procedures in this section, follow the safety instructions shipped with your computer.
  - ⚠ **CAUTION:** If you remove the hard drive from the computer when the drive is hot, *do not touch* the metal housing of the hard drive.
  - 🔄 **NOTICE:** To prevent data loss, turn off your computer (see [Turning Off Your Computer](#)) before removing the hard drive. Do not remove the hard drive while the computer is on or in Sleep state.
  - 🔄 **NOTICE:** Hard drives are extremely fragile. Exercise care when handling the hard drive.
  - 🔧 **NOTE:** Dell does not guarantee compatibility or provide support for hard drives from sources other than Dell.
  - 🔧 **NOTE:** If you are installing a hard drive from a source other than Dell, you need to install an operating system, drivers, and utilities on the new hard drive (see "Restoring Your Operating System" and "Reinstalling Drivers and Utilities" in your *Setup Guide*).
- 

## Removing the Hard Drive

1. Follow the procedures in [Before You Begin](#).
2. Remove the four M3 x 3-mm screws and slide the hard drive away from the bay.



3. Remove the two screws from either side of the hard drive bracket and pull the hard drive away from the bracket.




1	hard drive bracket	2	M2 x 3-mm screws (2)
3	hard drive		

- 🔄 **NOTICE:** When the hard drive is not in the computer, store it in a protective antistatic package (see "Protecting Against Electrostatic Discharge" in the safety instructions shipped with your computer).
-

## Replacing the Hard Drive

1. Remove the new drive from its packaging.

 **NOTE:** Save the original packaging for storing or shipping the hard drive.

2. Place the hard drive in the bracket and replace the two M2 x 3-mm screws on either side.
3. Slide the hard drive into the bay.
4. Replace the four M3 x 3-mm screws on the hard drive.
5. Slide the battery into the battery bay, until it clicks into place.
6. Install the operating system for your computer, as needed (see "Restoring Your Operating System" in your *Setup Guide*).
7. Install the drivers and utilities for your computer, as needed (see "Reinstalling Drivers and Utilities" in your *Setup Guide*).

---

[Back to Contents Page](#)



## Center Control Cover

### Dell™ Inspiron™ 1318 Service Manual

- [Removing the Center Control Cover](#)
- [Replacing the Center Control Cover](#)

- ⚠ CAUTION:** Before you begin any of the procedures in this section, follow the safety instructions shipped with your computer.
- ➡ NOTICE:** To avoid electrostatic discharge, ground yourself by using a wrist grounding strap or by periodically touching an unpainted metal surface (such as a connector on the back of the computer).
- ➡ NOTICE:** To help prevent damage to the system board, you must remove the battery from the battery bay before you begin working inside the computer.
- 

## Removing the Center Control Cover

1. Follow the procedures in [Before You Begin](#).
2. Remove the two M2 x 3-mm screws that secure the center control cover.



3. Turn the computer and open the display as far as possible.
- ➡ NOTICE:** Be extremely careful when removing the center control cover. The cable connector is very fragile.
4. Pry the center control cover up, and turn it over on top of the keyboard.
  5. Lift the cable release tab and disconnect the center control cover cable.



1	cable release tab	2	center control cover cable
3	center control cover		

6. Remove the center control cover.
- 

## Replacing the Center Control Cover

1. Insert the center control cover cable into the connector and push the cable release tab down to lock the cable in place.
  2. Snap the center control cover back in place.
  3. Turn the computer over and replace the two M2 x 3-mm screws that secure the center control cover to the computer base.
  4. Slide the battery into the battery bay, until it clicks into place.
- 

[Back to Contents Page](#)

## Keyboard

### Dell™ Inspiron™ 1318 Service Manual

- [Removing the Keyboard](#)
- [Replacing the Keyboard](#)

- ⚠ CAUTION:** Before you begin any of the procedures in this section, follow the safety instructions shipped with your computer.
- ➡ NOTICE:** To avoid electrostatic discharge, ground yourself by using a wrist grounding strap or by periodically touching an unpainted metal surface (such as a connector on the back of the computer).
- ➡ NOTICE:** To help prevent damage to the system board, you must remove the battery from the battery bay before you begin working inside the computer.
- 

## Removing the Keyboard

1. Follow the procedures in [Before You Begin](#).
  2. Remove the center control cover (see [Center Control Cover](#)).
  3. Remove the two M2 x 2-mm screws at the top of the keyboard.
- ➡ NOTICE:** The keycaps on the keyboard are fragile, easily dislodged, and time-consuming to replace. Be careful when removing and handling the keyboard.
- ➡ NOTICE:** Be extremely careful when removing and handling the keyboard. Failure to do so could result in scratching the display panel.
4. Carefully lift the keyboard and hold it to access the keyboard connector.



1	M2 x 2-mm screws (2)	2	keyboard
3	keyboard tabs (5)	4	keyboard cable
5	plastic tab		

5. Lift the plastic tab that secures the keyboard cable to the system board connector and remove the keyboard cable.
  6. Lift the keyboard away from the system.
- 

## Replacing the Keyboard

- ➡ NOTICE:** The keycaps on the keyboard are fragile, easily dislodged, and time-consuming to replace. Be careful when removing and handling the keyboard.
1. Slide the keyboard cable into the connector and press down on the plastic tab until it clicks into place.
  2. Align the five tabs along the bottom of the keyboard and slide them under the palm rest.

3. Replace the two M2 x 2-mm screws at the top of the keyboard.
  4. Replace the center control cover (see [Center Control Cover](#)).
  5. Slide the battery into the battery bay, until it clicks into place.
- 

[Back to Contents Page](#)

## Memory Module

### Dell™ Inspiron™ 1318 Service Manual

- [Removing the Memory Module\(s\)](#)
- [Replacing the Memory Module\(s\)](#)

**CAUTION:** Before you begin any of the procedures in this section, follow the safety instructions shipped with your computer.

**NOTICE:** To avoid electrostatic discharge, ground yourself by using a wrist grounding strap or by periodically touching an unpainted metal surface (such as a connector on the back of the computer).

You can increase your computer memory by installing memory modules on the system board. See "Specifications" in your *Setup Guide* for information on the memory supported by your computer. Install only memory modules that are intended for your computer.

**NOTE:** Memory modules purchased from Dell are covered under your computer warranty.

Your computer has two user-accessible SODIMM sockets that can be accessed from the bottom of the computer.

**NOTICE:** If you need to install memory modules in both connectors, first install a memory module in the connector located at the bottom of the computer (DIMM 1) before you install a module in the connector directly above it (DIMM 2).

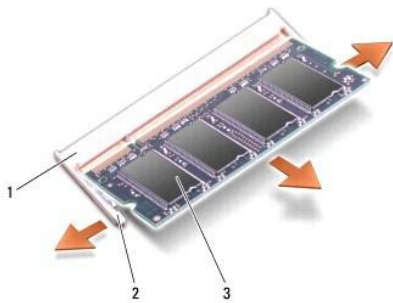
## Removing the Memory Module(s)

**NOTICE:** If a memory module is installed in the DIMM 2 connector, remove it prior to removing the memory module from the DIMM 1 connector. Failure to do so could result in damaging both memory modules.

1. Follow the procedures in [Before You Begin](#).
2. Remove the module cover (see [Module Cover](#)).

**NOTICE:** To prevent damage to the memory module connector, do not use tools to spread the memory module securing clips.

3. Use your fingertips to carefully spread apart the securing clips on each end of the memory module connector until the module pops up.
4. Remove the module from the connector.

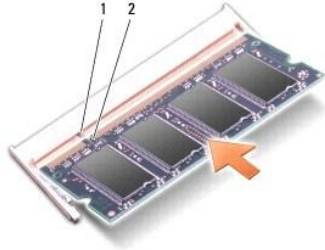


1	memory module connector	2	securing clips (2)
3	memory module		

## Replacing the Memory Module(s)

1. Align the notch in the module edge connector with the tab in the connector slot.
2. Slide the module firmly into the slot at a 45-degree angle, and rotate the module down until it clicks into place. If the module does not click into place, remove the module and reinstall it.

**NOTE:** If the memory module is not installed properly, the computer may not boot.



1	tab	2	notch
---	-----	---	-------

3. Replace the module cover (see [Module Cover](#)).
4. Slide the battery into the battery bay, until it clicks into place.
5. Turn on the computer.

As the computer boots, it detects the additional memory and automatically updates the system configuration information.

To confirm the amount of memory installed in the computer, click **Start**  → **Help and Support** → **Dell System Information**.

---

[Back to Contents Page](#)

[Back to Contents Page](#)

## WLAN Card

### Dell™ Inspiron™ 1318 Service Manual

- [Removing the WLAN Card](#)
- [Replacing the WLAN Card](#)

**CAUTION:** Before you begin any of the procedures in this section, follow the safety instructions shipped with your system.

**NOTICE:** To help prevent damage to the system board, you must remove the battery from the battery bay before you begin working inside the computer.

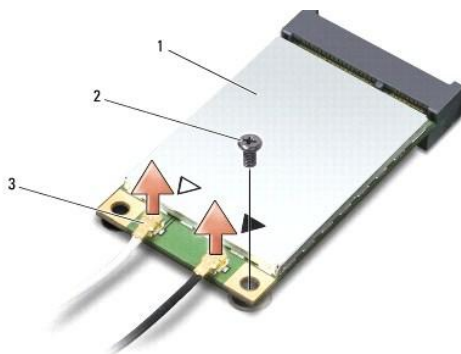
**NOTE:** If you ordered a WLAN card with your computer, the card is already installed.

## Removing the WLAN Card

1. Follow the procedures in [Before You Begin](#).
2. Loosen the captive screw on the cover labeled "C " and remove the cover.



3. Disconnect the antenna cables from the WLAN card.



1	WLAN card	2	M2 x 3-mm securing screw	3	antenna cable connectors (2)
---	-----------	---	--------------------------	---	------------------------------

4. Release the WLAN card by removing the securing screw.
5. Lift the WLAN card out of its system board connector.



---

## Replacing the WLAN Card

➔ **NOTICE:** The connectors are keyed to ensure correct insertion. If you feel resistance, check the connectors on the card and on the system board, and realign the card.

➔ **NOTICE:** To avoid damage to the WLAN card, never place cables under the card.

1. Insert the WLAN card connector at a 45-degree angle into the slot and press the other end of the WLAN card down.
2. Replace the M2 x 3-mm securing screw.
3. Connect the appropriate antenna cables to the WLAN card you are installing. If the WLAN card has two triangles on the label (white and black), connect:
  - 1 the white antenna cable to the connector labeled "main" (white triangle)
  - 1 the black antenna cable to the connector labeled "aux" (black triangle)

If the WLAN card has three triangles on the label (white, black, and gray), connect:

- 1 the white antenna cable to the white triangle
  - 1 the black antenna cable to the black triangle
  - 1 the gray antenna cable to the gray triangle
4. Secure unused antenna cables in the protective mylar sleeve.
5. Replace the WLAN cover and tighten the captive screw.
6. Slide the battery into the battery bay, until it clicks into place.



## Optical Drive

### Dell™ Inspiron™ 1318 Service Manual

- [Removing the Optical Drive](#)
- [Replacing the Optical Drive](#)

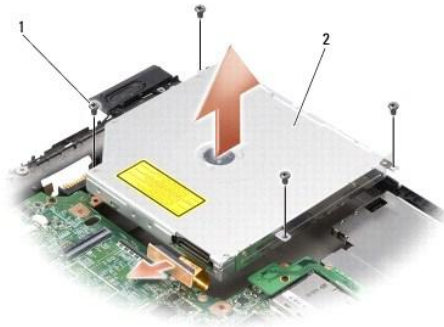
**⚠ CAUTION:** Before performing the following procedures, follow the safety instructions shipped with your computer.

**🔧 NOTICE:** To avoid electrostatic discharge, ground yourself by using a wrist grounding strap or by periodically touching an unpainted metal surface (such as the back panel) on the computer.

---

## Removing the Optical Drive

1. Follow the procedures in [Before You Begin](#).
2. Remove the display assembly (see [Display](#)).
3. Remove the keyboard (see [Keyboard](#)).
4. Remove the palm rest (see [Palm Rest](#)).
5. Remove the four M2 x 3-mm screws that secure the optical drive to the computer base.



1	M2 x 3-mm screws (4)	2	optical drive
---	----------------------	---	---------------

6. Lift the optical drive out of the computer base.
  7. Pull the connector away from the back of the optical drive.
- 

## Replacing the Optical Drive

1. Attach the connector to the back of the optical drive.
  2. Replace the optical drive and the four M2 x 3-mm screws that secure the optical drive to the computer base.
  3. Replace the palm rest (see [Palm Rest](#)).
  4. Replace the keyboard (see [Keyboard](#)).
  5. Replace the display assembly (see [Display](#)).
  6. Slide the battery into the battery bay, until it clicks into place.
-

[Back to Contents Page](#)

[Back to Contents Page](#)

## Palm Rest

### Dell™ Inspiron™ 1318 Service Manual

- [Removing the Palm Rest](#)
- [Replacing the Palm Rest](#)

**⚠ CAUTION:** Before you begin any of the procedures in this section, follow the safety instructions shipped with your computer.

**➡ NOTICE:** To avoid electrostatic discharge, ground yourself by using a wrist grounding strap or by periodically touching an unpainted metal surface (such as the back panel) on the computer.

---

## Removing the Palm Rest

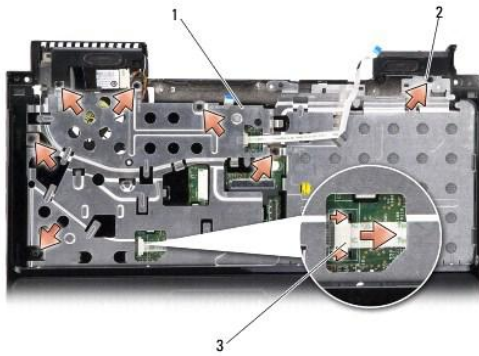
1. Follow the instructions in [Before You Begin](#).
2. Remove any card installed in the ExpressCard slot.
3. Remove any installed memory modules and the WLAN card (see [Memory Module](#) and [WLAN Card](#)).
4. Remove the hard drive (see [Hard Drive](#)).
5. Remove the display assembly (see [Display](#)).
6. Remove the internal card with Bluetooth® wireless technology (see [Internal Card With Bluetooth® Wireless Technology](#)).
7. Turn the computer over and remove the six M2.5 x 5-mm screws from the computer base.



8. Turn the computer over and remove the seven screws from the top of the palm rest.

**➡ NOTICE:** Pull on the plastic tab on top of the connector to avoid damaging the connector.

9. Push the black tab away from the system board connector to disconnect the touch pad cable. Use the plastic tab to pull the touch pad cable away from the system board connector.



1	palm rest	2	M2.5 x 2-mm screws (3) and M2 x 3-mm screws (4)
3	touch pad cable		

**NOTICE:** Carefully separate the palm rest from the computer base to avoid damage to the palm rest.

- Starting at the top of the palm rest, use your fingers to separate the palm rest from the computer base by lifting the inside of the palm rest while pushing in on the outside.




---

## Replacing the Palm Rest

- Align the palm rest with the computer base and gently snap it into place.
- Connect the touch pad cable to the connector on the system board and push the black tab towards the connector.
- Replace the seven screws on the top of the palm rest.
- Turn the computer over and replace the six screws in the computer base.
- Replace the display assembly (see [Display](#)).
- Replace the internal card with Bluetooth® wireless technology (see [Internal Card With Bluetooth® Wireless Technology](#)).
- Replace the card in the ExpressCard slot.
- Replace the WLAN card (see [WLAN Card](#)).

9. Replace the hard drive (see [Hard Drive](#)).
10. Slide the battery into the battery bay, until it clicks into place.

---

[Back to Contents Page](#)

## ExpressCard Reader

### Dell™ Inspiron™ 1318 Service Manual

- [Removing the ExpressCard Reader](#)
- [Replacing the ExpressCard Reader](#)

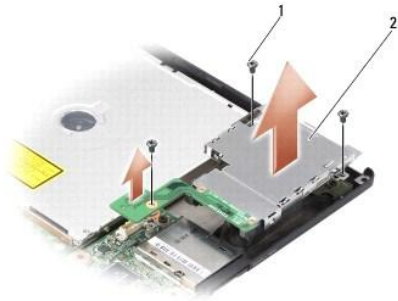
**CAUTION:** Before performing the following procedures, follow the safety instructions shipped with your computer.

**NOTICE:** To avoid electrostatic discharge, ground yourself by using a wrist grounding strap or by periodically touching a connector on the back panel of the computer.

---

## Removing the ExpressCard Reader

1. Follow the procedures in [Before You Begin](#).
2. Remove any card installed in the ExpressCard slot.
3. Remove the display assembly (see [Display](#)).
4. Remove the palm rest (see [Palm Rest](#)).
5. Remove the three M2 x 3-mm screws that secure the ExpressCard reader to the computer base.



1	M2 x 3-mm screws (3)	2	ExpressCard reader
---	----------------------	---	--------------------

6. Lift the ExpressCard reader to disconnect it from the system board.
- 

## Replacing the ExpressCard Reader

1. Secure the ExpressCard reader to the computer base by replacing the three M2 x 3-mm screws.
  2. Replace the palm rest (see [Palm Rest](#)).
  3. Replace the display assembly (see [Display](#)).
  4. Replace any card installed in the ExpressCard slot.
  5. Slide the battery into the battery bay, until it clicks into place.
-



## Power Board

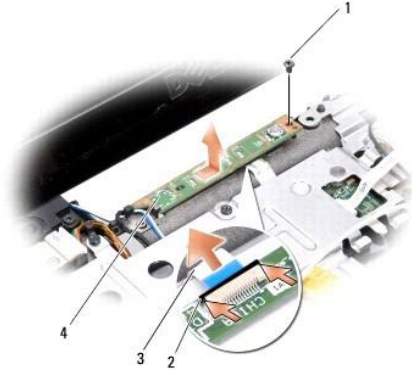
### Dell™ Inspiron™ 1318 Service Manual

- [Removing the Power Board](#)
- [Replacing the Power Board](#)

- ⚠ CAUTION:** Before you begin any of the procedures in this section, follow the safety instructions shipped with your computer.
- ➡ NOTICE:** To avoid electrostatic discharge, ground yourself by using a wrist grounding strap or by periodically touching an unpainted metal surface (such as a connector on the back of the computer).
- ➡ NOTICE:** To help prevent damage to the system board, you must remove the battery from the battery bay before you begin working inside the computer.
- 

## Removing the Power Board

1. Follow the procedures in [Before You Begin](#).
2. Remove the center control cover (see [Center Control Cover](#)).
3. Remove the keyboard (see [Keyboard](#)).
4. Remove the screw that secures the power board to the system board.
- ➡ **NOTICE:** Be extremely careful when disconnecting the cable. The cable connector is very fragile.
- ➡ **NOTICE:** Be extremely careful when removing and handling the power board. Failure to do so could result in scratching the display panel.
5. Lift and turn the power board over to access the power board connector.
6. Push the black tab away from the connector to disconnect the power board cable.



1	M2 x 2-mm screw	2	black tab
3	power board cable	4	power board

---

## Replacing the Power Board

1. Slide the power board cable into the connector.
2. Push the black tab towards the connector to secure the power board cable.
3. Align the screw hole on the power board with the screw hole on the system board and replace the screw.
4. Replace the keyboard (see [Keyboard](#)).
5. Replace the center control panel (see [Center Control Cover](#)).



6. Slide the battery into the battery bay, until it clicks into place.

---

[Back to Contents Page](#)

## Wireless Switch Assembly

Dell™ Inspiron™ 1318 Service Manual

- [Removing the Wireless Switch Assembly](#)
- [Replacing the Wireless Switch Assembly](#)

**⚠ CAUTION:** Before you begin any of the procedures in this section, follow the safety instructions shipped with your computer.

**👉 NOTICE:** To avoid electrostatic discharge, ground yourself by using a wrist grounding strap or by periodically touching an unpainted metal surface (such as the back panel) on the computer.

**👉 NOTICE:** Handle components and cards by their edges, and avoid touching pins and contacts.

---

### Removing the Wireless Switch Assembly

1. Follow the instructions in [Before You Begin](#).
2. Remove the system board (see [System Board](#)).
3. Remove the two M2 x 3-mm screws from either side of the wireless switch assembly board and lift it away from the computer base.



1	M2 x3-mm screws (2)	2	wireless switch assembly board	3	wireless switch assembly cable connector
---	---------------------	---	--------------------------------	---	--

---

### Replacing the Wireless Switch Assembly

1. Secure the wireless switch assembly board to the computer base by replacing the two M2 x 3-mm screws.
  2. Replace the system board (see [System Board](#)).
  3. Slide the battery into the battery bay, until it clicks into place.
-

## Speaker

### Dell™ Inspiron™ 1318 Service Manual

- [Removing the Speaker](#)
- [Replacing the Speaker](#)

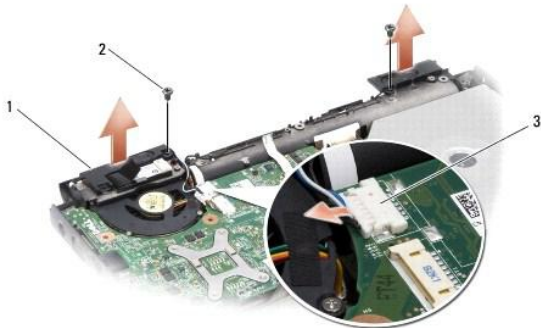
**⚠ CAUTION:** Before you begin any of the procedures in this section, follow the safety instructions shipped with your computer.

**🔧 NOTICE:** To avoid electrostatic discharge, ground yourself by using a wrist grounding strap or by periodically touching an unpainted metal surface (such as the back panel) on the computer.

---

## Removing the Speaker

1. Follow the instructions in [Before You Begin](#).
2. Remove any card installed from the ExpressCard slot.
3. Remove any installed memory modules and the WLAN card (see [Memory Module](#) and [WLAN Card](#)).
4. Remove the hard drive (see [Hard Drive](#)).
5. Remove the display assembly (see [Display](#)).
6. Remove the palm rest (see [Palm Rest](#)).
7. Remove the two M2 x3-mm screws that secure the speakers to the computer base.
8. Disconnect the speaker cable from the speaker connector on the system board.



1	speaker	2	M2 x 3-mm speaker screws (2)
3	speaker connector		

---

## Replacing the Speaker

1. Connect the speaker cable to the speaker connector on the system board.
2. Replace the two M2 x3-mm screws that secure the speakers to the computer base.
3. Replace the palm rest (see [Palm Rest](#)).
4. Replace the display assembly (see [Display](#)).
5. Replace the hard drive (see [Hard Drive](#)).
6. Replace the WLAN card and the memory modules (see [WLAN Card](#) and [Memory Module](#)).


7. Replace the card in the Expresscard slot.
  8. Slide the battery into the battery bay, until it clicks into place.
- 


[Back to Contents Page](#)

## System Board

### Dell™ Inspiron™ 1318 Service Manual

- [Removing the System Board](#)
- [Replacing the System Board](#)


 **CAUTION:** Before you begin any of the procedures in this section, follow the safety instructions shipped with your computer.

 **NOTICE:** To avoid electrostatic discharge, ground yourself by using a wrist grounding strap or by periodically touching an unpainted metal surface (such as the back panel) on the computer.

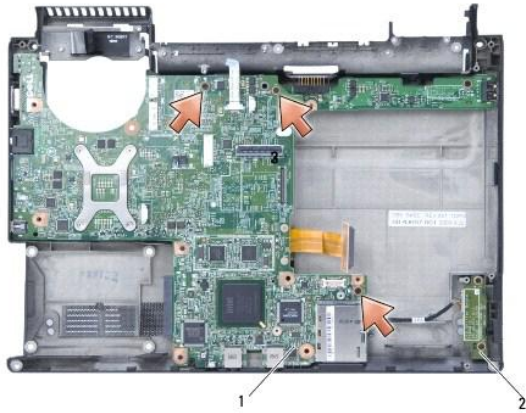
---

## Removing the System Board

The system board's BIOS chip contains the Service Tag, which is also visible on a barcode label on the bottom of the computer. The replacement kit for the system board includes a CD that provides a utility for transferring the Service Tag to the replacement system board.

 **NOTICE:** Handle components and cards by their edges, and avoid touching pins and contacts.

1. Follow the instructions in [Before You Begin](#).
2. Remove any card installed from the ExpressCard slot.
3. Remove any installed memory modules and WLAN card (see [Memory Module](#) and [WLAN Card](#)).
4. Remove the hard drive (see [Hard Drive](#)).
5. Remove the processor heat sink (see [Processor Heat Sink](#)).
6. Remove the processor (see [Processor](#)).
7. Remove the coin-cell battery (see [Coin-Cell Battery](#)).
8. Remove the internal card with Bluetooth® wireless technology (see [Internal Card With Bluetooth® Wireless Technology](#)).
9. Remove the display assembly (see [Display](#)).
10. Remove the palm rest (see [Palm Rest](#)).
11. Remove the optical drive (see [Optical Drive](#)).
12. Remove the ExpressCard reader (see [ExpressCard Reader](#)).
13. Disconnect the power button cable from the system board connector.
14. Disconnect the center control cover cable from the system board connector.
15. Disconnect the speaker cable from the system board connector.
16. Disconnect the wireless switch assembly cable from the system board.
17. Remove the three remaining M2.5 x 5-mm screws that secure the system board to the computer base.



1	system board	2	wireless switch assembly board
---	--------------	---	--------------------------------

18. Lift the system board at an angle toward the side of the computer and out of the computer base.

---

## Replacing the System Board

1. Follow all of the steps in [Removing the System Board](#) in reverse order.

➡ **NOTICE:** Before turning on the computer, replace all screws and ensure that no stray screws remain inside the computer. Failure to do so may result in damage to the computer.

2. Slide the battery into the battery bay, until it clicks into place.

3. Turn on the computer.

🔧 **NOTE:** After you have replaced the system board, enter the computer Service Tag into the BIOS of the replacement system board.

4. Insert the CD that accompanied the replacement system board into the appropriate drive. Follow the instructions that appear on the screen.

---

[Back to Contents Page](#)