

## EW-7438RPn Air

# User Manual

02-2014 / v1.0

### **Edimax Technology Co., Ltd.**

No.3, Wu-Chuan 3rd Road, Wu-Gu, New Taipei City 24891, Taiwan

Email: [support@edimax.com.tw](mailto:support@edimax.com.tw)

---

### **Edimax Technology Europe B.V.**

Nijverheidsweg 25, 5683 CJ Best, The Netherlands

Email: [support@edimax.nl](mailto:support@edimax.nl)

---

### **Edimax Computer Company**

3350 Scott Blvd., Bldg.15 Santa Clara, CA 95054, USA

Live Tech Support: 1(800) 652-6776

Email: [support@edimax.com](mailto:support@edimax.com)

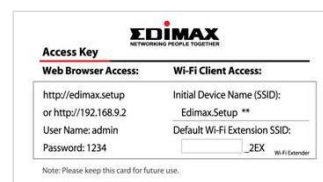
# CONTENTS

<b>I. Product Information.....</b>	<b>1</b>
I-1. Package Contents .....	1
I-2. System Requirements.....	1
I-3. LED Status .....	1
I-4. Hardware Overview .....	2
I-5. Safety Information .....	3
<b>II. Installation.....</b>	<b>4</b>
II-1. Installation .....	4
II-2. WPS Setup.....	9
II-3. Reset to Factory Default Settings .....	10
<b>III. Browser Based Configuration Interface.....</b>	<b>11</b>
III-1. Login.....	11
III-2. Save Settings .....	13
III-3. Main Menu .....	14
III-3-1. Home.....	14
III-3-2. iQ Setup .....	17
III-3. WPS Settings .....	17
III-4. Advanced Settings .....	19
III-4-1. WLAN Security .....	20
III-4-2. Scheduling Setting .....	21
III-4-3. Guest Network.....	24
III-4-4. Administration Utility .....	26
III-4-5. Configuration Tools.....	28
<b>IV. EdiRange App.....</b>	<b>32</b>
IV-1. Login.....	32
IV-2. Main Menu .....	34
IV-3. Good Night Mode .....	35
IV-4. Wi-Fi Scheduling .....	35
IV-5. Admin.....	36
<b>V. Appendix .....</b>	<b>37</b>
V-1. Configuring your IP address.....	37
V-1-1. How to check that your computer uses a dynamic IP address .....	38
V-1-1-1. Windows XP .....	38
V-1-1-2. Windows Vista .....	40
V-1-1-3. Windows 7 .....	42

V-1-1-4.	Windows 8 .....	45
V-1-1-5.	Mac OS.....	49
V-1-2.	How to modify the IP address of your computer .....	51
V-1-2-1.	Windows XP .....	51
V-1-2-2.	Windows Vista .....	53
V-1-2-3.	Windows 7 .....	54
V-1-2-4.	Windows 8 .....	59
V-1-2-5.	Mac .....	63
V-1-3.	How to Find Your Network Security Key .....	66
V-1-3-1.	Windows 7 & Vista.....	66
V-1-3-2.	Mac .....	68
V-1-4.	How to Find Your Router's IP Address.....	71
V-1-4-1.	Windows XP, Vista & 7.....	71
V-1-4-2.	Windows 8 .....	73
V-1-4-3.	Mac .....	76
V-2.	Connecting to a Wi-Fi network.....	78
V-3.	Glossary.....	80

# I. Product Information

## I-1. Package Contents



- EW-7438RPn Air
- CD with multi-language QIG & user manual
- Quick installation guide (QIG)
- Access key card

## I-2. System Requirements

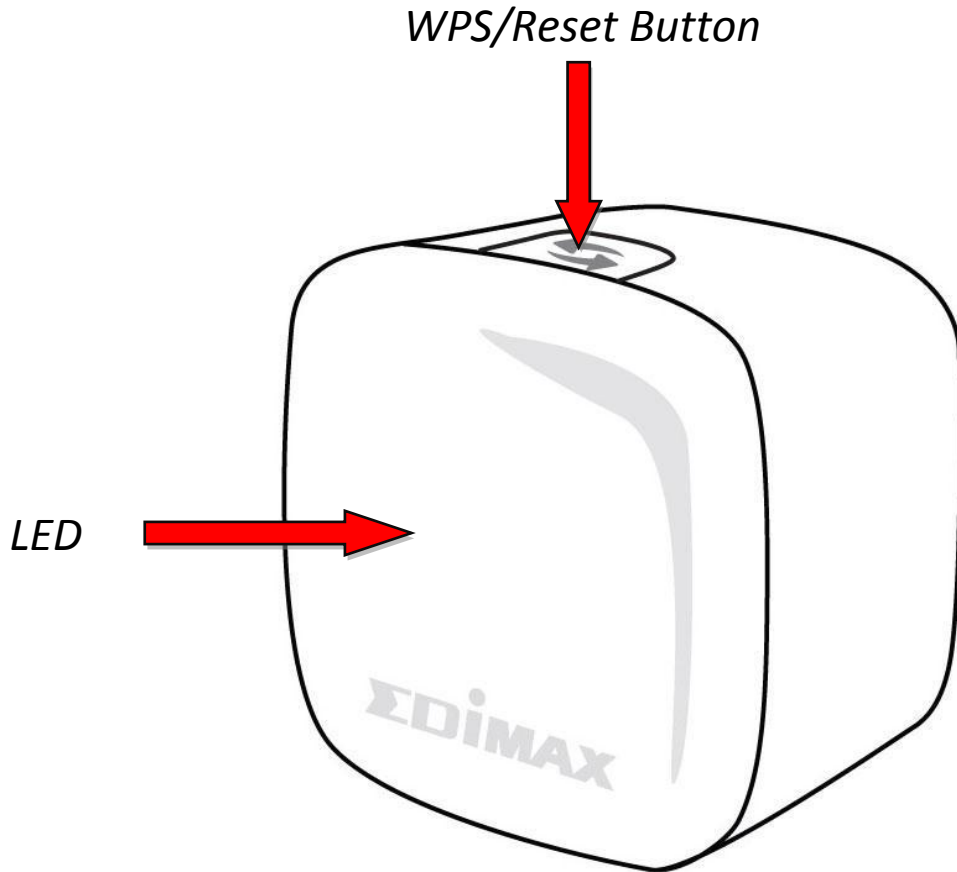
- Existing 2.4GHz wireless network
- Computer with 2.4GHz 802.11/b/g/n Wi-Fi adapter, and web browser for software configuration (Internet Explorer 8<sup>®</sup> or above, Google Chrome<sup>®</sup>, Firefox<sup>®</sup> or Safari<sup>®</sup> latest version)
- iOS 5 or above or Android 4.x or above for mobile app

## I-3. LED Status

Color	Status	Description
Blue	On	Good signal strength: 60 – 100%
	Flashing	Normal signal strength: 40 – 59%
Amber	Flashing	Poor signal strength: 0 – 39%
Red	On	Disconnected
	Flashing	Extender is booting up
Green	On	Successful WPS connection

	Flashing	WPS in progress
Off	Off	Sleep Mode

#### I-4. Hardware Overview



## **I-5. Safety Information**

In order to ensure the safe operation of the device and its users, please read and act in accordance with the following safety instructions.

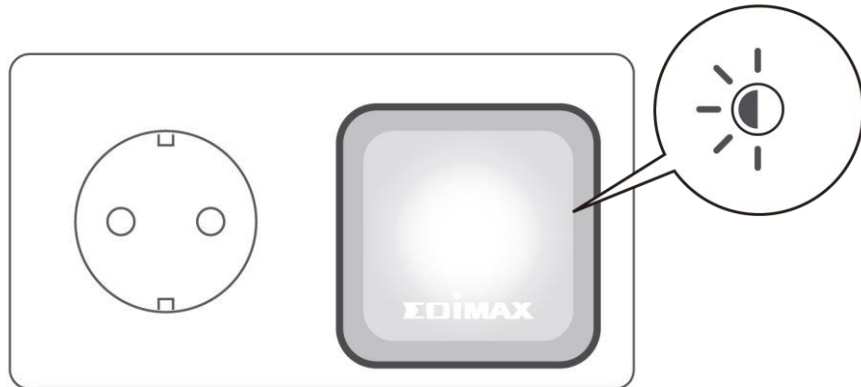
1. The device is designed for indoor use only; do not place it outdoors.
2. Do not place the device in or near hot/humid places, such as a kitchen or bathroom.
4. Handle the device with care. Accidental damage will void the warranty of the device.
5. The device contains small parts which are a danger to small children under 3 years old. Please keep the device out of reach of children.
6. Do not place the device on paper, cloth, or other flammable materials. The device may become hot during use.
7. There are no user-serviceable parts inside the device. If you experience problems with the device, please contact your dealer of purchase and ask for help.
8. The device is an electrical device and as such, if it becomes wet for any reason, do not attempt to touch it without switching the power supply off. Contact an experienced electrical technician for further help.

## II. Installation

---

### II-1. Installation

1. Plug the EW-7438RPn Air into a power socket. The LED will **flash red** while the system is booting up. The device is ready when the LED displays **on (red)**.



2. Use a Wi-Fi device (e.g. computer, tablet, smartphone) to search for a Wi-Fi network with the SSID “EdimaxEXT.Setup \*\*” and connect to it.

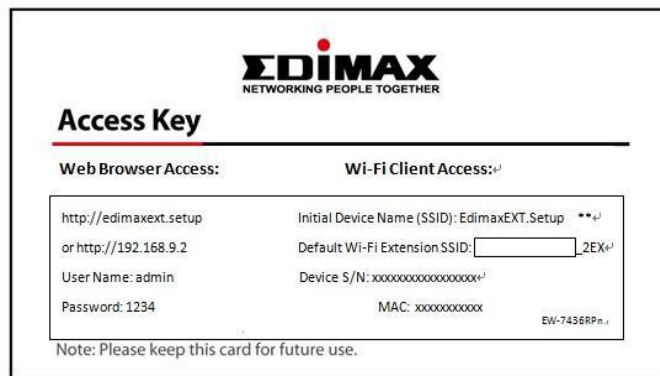


***If you are using a computer, please disconnect any Ethernet cables. For mobile devices, iOS 5 or Android 4.x or above is required.***



***The last two characters of the SSID (EdimaxEXT.Setup\*\*) will be unique numbers according to your device e.g. “EdimaxEXT.Setup c1”. These unique numbers are displayed as the last two characters of the MAC address on the included access key card.***





3. Open a web browser and if you do not automatically arrive at the “Get Started” screen shown below, enter the URL ***http://edimaxext.setup*** and click “**Get Started**” to begin the setup process.




***⚠ If you cannot access <http://edimaxext.setup>, please make sure your computer is set to use a dynamic IP address. For more information please refer to V. Appendix.***


4. Please read the on screen instructions about selecting a good location for your wireless extender and then click “NEXT” to continue. You can check your signal strength on the next page.



- Select your Wi-Fi network from the list and enter the security key/password. You can also enter a new Wi-Fi network name (SSID) if you wish. Click “Next” to continue.

 **By default, the Wi-Fi extender’s new wireless network name ( SSID) is your existing router/access point’s SSID + \_2EX. For example if your router’s SSID is “Your SSID” then the EW-7438RPn Air ’s SSID will be “Your SSID\_2EX”. You can change your extender’s new SSID in the “Extender Device SSID” field.**


Select	SSID	Signal
<input type="radio"/>	Matt	100%
Security Key(your existing network security key) <input type="text" value="abcd1234"/>		
Extender device SSID <input type="text" value="Matt_2EX"/>		
<input type="radio"/>	EDIMAX_GC_2.4G_test	100%
<input type="radio"/>	OBM_AE	100%

 **Check the box “Connect to a hidden network” if you wish to connect to a hidden SSID and manually enter the details.**

- Please wait while the EW-7438RPn Air tests the connection.

Connection Test



 **If your Wi-Fi extender cannot obtain an IP address from your existing router/access point then click the “Static IP” button to assign an IP address to the extender.**

- When the connection test is complete, click “Apply” to restart the extender.

Connection test complete. Click "Apply" to restart the device.



Security Key : abcd1234 ✓

IP : 192.168.2.102 ✓

Back

Apply

8. Please wait a moment until the extender is ready.

System restarting. Please wait for a moment.

15%

Remind: Your Wi-Fi will disconnect from the extender during the system restart (approximately 1 minute). When the system is complete, please connect to the extender's new SSID and password as below.

Extender SSID Name : Matt\_2EX

Security Key : abcd1234

9. A final congratulations screen will indicate that setup is complete. The EW-7438RPn Air is working and ready for use - the LED should display **on** or **flashing blue** depending on your signal strength. To download the EdiRange app, click the icon or scan the QR code.

Android:



iOS:



- 10.** Please close the browser window. You can now connect to the **extender's new SSID** on a wireless device within range such as a computer, smartphone or tablet.



***The password for your Wi-Fi extender's SSID is the same as for your router's SSID.***

*For more advanced configurations, use the browser based configuration interface (refer to **III. Browser Based Configuration Interface**)*



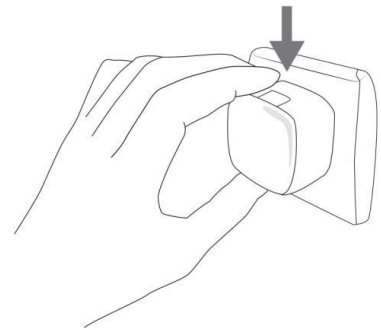
## II-2. WPS Setup

If your wireless router/access point supports WPS (Wi-Fi Protected Setup) then you can use this method to setup your wireless extender.

1. Press the WPS button on your wireless router/access point to activate its WPS.

 ***Please check the instructions for your wireless router/access point for how long you need to hold down its WPS button.***

2. **Within two minutes**, press and hold the WPS button on the wireless extender for two seconds. The extender's LED should **flash green** to indicate that WPS is in progress.

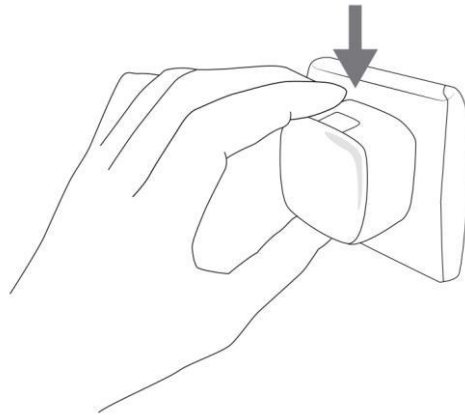


3. The devices will establish a connection. The extender's LED should display **on (green)** for 30 seconds to indicate a successful connection.

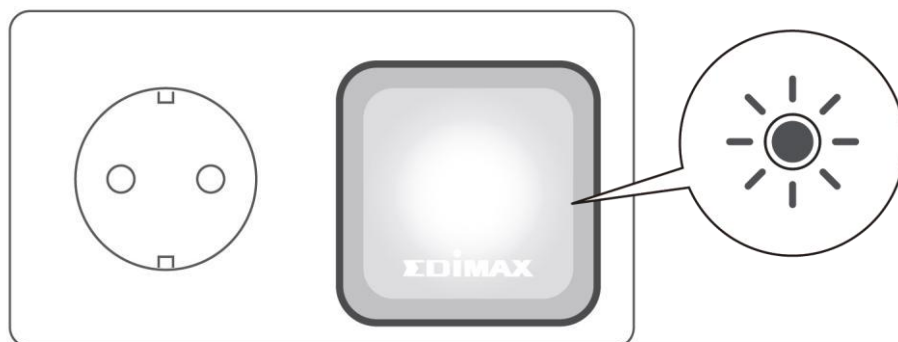
### II-3. Reset to Factory Default Settings

If you experience problems with your extender or if you want to change the extender to a different operating mode, you can reset the device back to its factory settings. This resets **all** settings back to default.

- 1.** Press and hold the WPS/Reset button for at least 10 seconds until the LED is **flashing red**.



- 2.** Wait for the extender to restart. The extender is ready for setup when the LED displays **on (red)**.



### III. *Browser Based Configuration Interface*

---

You can use the browser based configuration interface to configure advanced settings.



***Please ensure that your computer is set to use a dynamic IP address. Refer to V-1. Configuring your IP address for more information.***

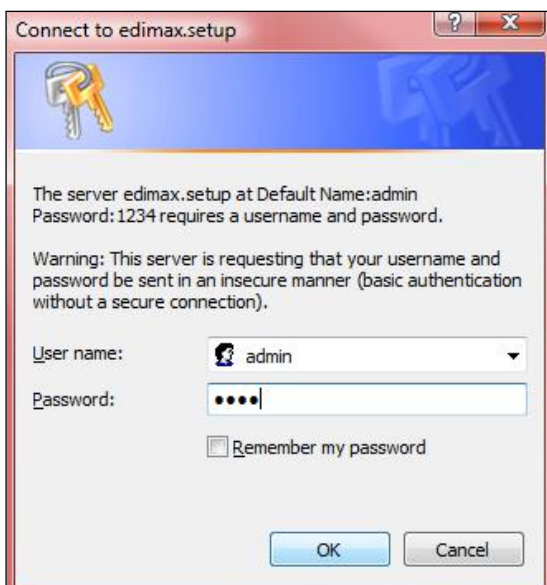
#### III-1. Login

1. Enter ***http://edimaxext.setup*** into the URL bar of a browser on a network device which is connected to the same Wi-Fi network as the extender.

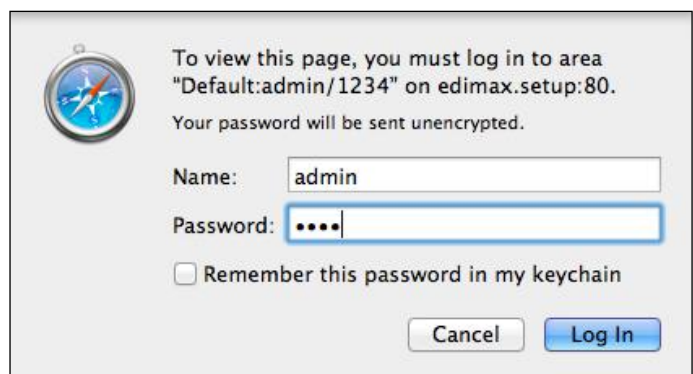


2. You will be prompted for a username and password. The default username is “admin” and the default password is “1234”.

#### ***Windows:***



#### ***Mac:***



3. You will arrive at the “Status and Information” screen. Use the menu down the left side to navigate.

- ▶ Home
- ▶ iQ Setup
- ▶ WPS Settings
- ▶ Advanced Setting

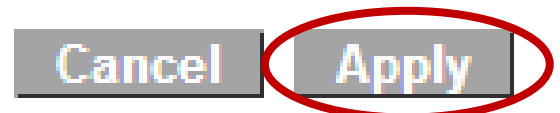
**Status and Information**

Basic system information and the network configuration status of this device are displayed below.

System	
Uptime	0day:2h:33m:30s
Hardware Version	V1.0A
Firmware Version	1.08 <a href="#">Upgrade Firmware</a>
Mode	Range Extender
Wireless scheduling	ON
Wireless Configuration	
ESSID	Matt_2EX
Channel Number	2
Security	WPA-shared key
BSSID (MAC)	80:1F:02:E2:50:96
Associated Clients	1 <a href="#">Show Active Clients</a>
Status	Connected
Signal Strength	<div style="width: 100%; background-color: blue; height: 10px;"></div> 100%
LAN Configuration	
IP Address	192.168.2.102
Subnet Mask	255.255.255.0
Default Gateway	192.168.2.1
MAC Address	80:1f:02:e2:50:94

## III-2. Save Settings

1. After you make any changes to the EW-7438RPn Air's settings, please click "APPLY".



2. Then, select "CONTINUE" to save changes but not apply them yet, or select "APPLY" to restart the EW-7438RPn Air and bring the changes into effect.

Settings saved successfully.

Please click Apply to restart the system and make the changes take effect.



**The EW-7438RPn Air needs to restart in order to apply and bring any changes into effect. Use the "CONTINUE" button to make several changes and apply them all together in one restart.**



### III-3. Main Menu

Use the main menu down the left side to navigate.

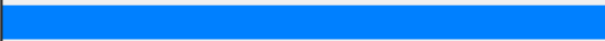


**Screenshots displayed are examples. The information shown on your screen will vary depending on your configuration.**

The screenshot shows the EDIMAX Administration Utility web interface. The left sidebar menu is circled in red, highlighting the 'Advanced Setting' option. The main content area displays the 'Administration Utility' page, which includes a section for 'Password Settings' with input fields for 'Current Password', 'New Password', and 'Re-Enter Password'. Below this is a section for '2.4GHz' settings, with radio buttons for 'Obtain an IP address automatically:' and 'Use the following IP address:'. The 'Use the following IP address:' section includes input fields for 'IP Address' (192.168.9.2), 'Subnet Mask' (255.255.255.0), and 'Default Gateway' (0.0.0.0). At the bottom right of the main content area, there are 'Cancel' and 'Apply' buttons.

#### III-3-1. Home

The “Status” page displays basic system information about the device, arranged into three categories: system, wireless configuration & LAN configuration.

System	
Uptime	0day:4h:52m:9s
Hardware Version	V1.0A
Firmware Version	1.08 <a href="#">Upgrade Firmware</a>
Mode	Range Extender
Wireless scheduling	ON
Wireless Configuration	
ESSID	Matt_2EX
Channel Number	2
Security	WPA-shared key
BSSID (MAC)	80:1F:02:E2:50:96
Associated Clients	1 <a href="#">Show Active Clients</a>
Status	Connected
Signal Strength	 100%
LAN Configuration	
IP Address	192.168.2.102
Subnet Mask	255.255.255.0
Default Gateway	192.168.2.1
MAC Address	80:1f:02:e2:50:94

<b>Uptime</b>	Displays the total time since the device was turned on.
<b>Hardware Version</b>	Displays the hardware version.
<b>Firmware Version</b>	Displays the firmware version.
<b>Mode</b>	Displays the operating mode.
<b>Wireless Scheduling</b>	Displays whether wireless scheduling is on or off.
<b>ESSID</b>	Displays the EW-7438RPn Air's ESSID, sometimes also known as SSID. The ESSID/SSID is the name used to identify a wireless network.
<b>Channel Number</b>	Displays the current wireless channel.
<b>Security</b>	Displays the current wireless security setting.
<b>BSSID (MAC)</b>	Displays the device's BSSID. The BSSID identifies the EW-7438RPn Air in the network, and is the same as the device's MAC address.
<b>Associated Clients</b>	Displays the number of clients connected to the EW-7438RPn Air. Click "Show Active

	Clients” to display a new window showing information about wireless clients.
<b>Status</b>	Displays the current connection status of the EW-7438RPn Air.
<b>Signal Strength</b>	Displays the wireless signal strength from your router/access point to the EW-7438RPn Air.
<b>IP Address</b>	Displays the IP address of this device.
<b>Subnet Mask</b>	Displays the subnet mask of the IP address.
<b>Default Gateway</b>	Displays the IP address of the default gateway.
<b>MAC address</b>	Displays the device’s MAC address. The MAC address is a unique, fixed ID for this device, it cannot be modified.

### III-3-2. iQ Setup

You can run the setup wizard again to reconfigure the basic settings of the device. Please refer back to **II-1. Installation** for guidance.

### III-3. WPS Settings

Wi-Fi Protected Setup is a simple way to establish connections between WPS compatible devices. When WPS is activated in the correct manner and at the correct time for two compatible devices, they will automatically connect. PIN code WPS includes the use of a PIN code between the two devices for verification.

The WPS Settings page displays settings for WPS between your extender and a **wireless client**. For WPS Setup between your extender and **router/access point**, please use the WPS button as described in **II-2. WPS Setup**.

**WPS(Wi-Fi Protected Setup) Settings**

This page allows you to change the setting for WPS(Wi-Fi Protected Setup).WPS can help your wireless client automatically connect to the Access Point.

Note: WPS function will be disabled if your wireless security uses WEP or WPA (TKIP) encryption.

WPS Settings	<input checked="" type="radio"/> 2.4GHz
--------------	---

• **2.4G Wi-Fi Protected Setup Information**

WPS Status	Configured
Self PinCode	83861963

• **Device Configure**

Configuration Mode Device is as an AP	Registrar
Configure via Push Button	<input type="button" value="Start PBC"/>
Input Client PIN Code	<input type="text"/> <input type="button" value="Start PIN"/>

<b>WPS Status</b>	Displays “Configured” or “unConfigured” depending on whether WPS and SSID/security settings for the device have been configured or not, either manually or using the WPS button.
-------------------	--

<b>Self PIN Code</b>	Displays the WPS PIN code of the device.
<b>Configuration Mode Device is as an AP</b>	The configuration mode of the device's WPS setting is displayed here. "Registrar" means the device acts as an access point for a wireless client to connect to and the wireless client(s) will follow the device's wireless settings.
<b>Configure via Push Button</b>	Click "Start PBC" (Push-Button Configuration) to activate WPS on the access point. WPS will be active for 2 minutes.
<b>Input Client PIN Code</b>	Enter the wireless client's PIN code here and click "Start PIN" to activate PIN code WPS. Refer to your wireless client's documentation if you are unsure of its PIN code.

### III-4. Advanced Settings

The “Advanced Settings” page allows you to adjust the power output and LED operation of the EW-7438RPn Air. The submenu options listed under “Advanced Settings” allow you to configure security, scheduling, guest network and various administrative and management functions.

**Advanced Settings**

Advanced functions of the extender can be configured below.

Tx Power	100 % ▼
----------	---------

Enable LED Off Mode  
 Turn off all LED indicators

<b>Tx Power</b>	You can adjust the level of wireless output power as a percentage. Depending on the size of your location and required coverage, you may not require 100% output power. Reducing the output power can enhance security since your Wi-Fi signal will not extend to potential malicious/unknown users in distant areas.
<b>Enable LED Off Mode</b>	Check this box to enable “LED Off Mode” which allows you to select “Turn off all LED indicators” .

### III-4-1. WLAN Security

The security/encryption type and password for your wireless extender is the same as your existing router/access point. On this page you can set a new SSID for your extender and choose to broadcast or hide the extender's SSID.

Broadcast SSID	<input checked="" type="radio"/> Enable <input type="radio"/> Disable
Device SSID	<input type="text" value="Matt_2EX"/>
Security Type	WPA pre-shared key

<b>Broadcast SSID</b>	Enable or disable ESSID broadcast. When enabled, the ESSID will be visible to clients as an available Wi-Fi network. When disabled, the ESSID will not be visible as an available Wi-Fi network to clients – clients must manually enter the ESSID in order to connect. A hidden (disabled) ESSID is typically more secure than a visible (enabled) SSID. WPS (Wi-Fi Protected Setup) is also disabled when SSID broadcast is disabled.
<b>Device SSID</b>	This is the name of your Wi-Fi network for identification, also sometimes referred to as “SSID”. The SSID can consist of any combination of up to 32 alphanumerical characters.
<b>Security Type</b>	The security/encryption type of your EW-7438RPn Air's wireless network is displayed here. The security/encryption type is the same as your existing router/access point.

### III-4-2. Scheduling Setting

The “Scheduling Settings” page enables you to configure the EW-7438RPn Air’s scheduling function, along with the time & date settings. The scheduling function allows you to schedule the extender’s Wi-Fi and LED on or off according to your preference.



***Wireless scheduling can save energy and increase the security of your network.***

**Time Zone**

Set Date & Time Automatically  Yes  No

Time setting: (GMT+08:00)Taipei

Time Server Address: pool.ntp.org

Daylight Savings  Enable Function

January 1 To January 1

Cancel Apply

<b>Set Date &amp; Time Automatically</b>	Select “Yes” to set the date & time automatically, and select “No” to set a time zone and time server manually.
<b>Time Setting</b>	Select the time zone of your country or region.
<b>Time Server Address</b>	The extender supports NTP (Network Time Protocol), select a time server from the drop down menu.
<b>Daylight Savings</b>	If your country/region uses daylight saving time, please check the “Enable Function” box, and select the start and end date.



***Time & date and NTP server settings must be configured correctly in order for the scheduling feature to function properly.***



**Scheduling setting**

Scheduling function can be configured below for specific service.

Schedule Table (Up to 10 sets) :  Enable  Disable

NO.	Service	Schedule description	Schedule	Select
1	Wireless off		<input type="button" value="Edit"/>	<input type="button" value="Delete"/>

<b>Add</b>	Click to add a new schedule in a new window (see below).
<b>Edit</b>	Edit an existing schedule in a new window.
<b>Delete</b>	Delete the specified schedule.

**Add**

When you click “Add” to add a new schedule, a new window will open as shown below:



**Schedules can be set individually by day or to occur every day.**

Service :

Schedule description :

	Start Time (hh.mm)	End Time (hh.mm)	Select
Sunday	0 : 0	0 : 0	<input type="radio"/>
Monday	0 : 0	0 : 0	<input type="radio"/>
Tuesday	0 : 0	0 : 0	<input type="radio"/>
Wednesday	0 : 0	0 : 0	<input type="radio"/>
Thursday	0 : 0	0 : 0	<input type="radio"/>
Friday	0 : 0	0 : 0	<input type="radio"/>
Saturday	0 : 0	0 : 0	<input type="radio"/>
Everday	0 : 0	0 : 0	<input type="radio"/>

- 1.** Enter a name for the schedule in the “schedule description” box in the top right corner.
- 2.** Specify a start and end time (hours and minutes) and day (or select “everyday”) for the schedule using the drop-down menus.
- 3.** Select the schedule in the “Select” column and click “Save” to save the schedule, or “Back” to cancel and go back to the previous screen.

### III-4-3. Guest Network

You can use an additional “guest” wireless network so guest users can enjoy Wi-Fi connectivity without accessing your primary network. The guest network can also be used as a parental control function, allowing you to moderate your child’s Internet access.



***The guest network is separate from your extender’s primary network.***

**Guest Network Basic Settings**

Enable Guest Network SSID

Wireless Guest Name

Enable Wireless Clients Isolation

Band

Channel Number  (Same as main SSID)

**Guest Network Wireless Security**

Encryption

Pre-shared Key  (at least 8 characters)

<b>Enable Guest SSID</b>	Check/uncheck the box to enable/disable the guest Wi-Fi network.
<b>Wireless Guest Name</b>	Enter a reference/ID name for your guest wireless network.
<b>Enable Wireless Clients Isolation</b>	Check the box to enable wireless clients isolation. This prevents wireless clients connected to the extender from communicating with each other and improves security. Typically, this function is useful for corporate environments or public hot spots and can prevent brute force attacks on clients’ usernames and passwords.
<b>Band</b>	Displays the wireless standard used for the extender’s frequency band: 2.4GHz (b+g+n): Allows 802.11b, 802.11g, and 802.11n wireless clients to connect to the extender.

<b>Channel Number</b>	Channel number for the guest network is the same as the main SSID and cannot be adjusted independently.
<b>Encryption</b>	Enable or disable encryption for the guest network.
<b>Pre-shared Key</b>	When encryption is enabled, enter a pre-shared key (password) for your guest network.



***You cannot select a different encryption type (e.g. WEP, TKIP, etc.) for your guest network. The default encryption type is WPA2 which is the most secure encryption type.***

### III-4-4. Administration Utility

You can change the password used to login to the browser-based configuration interface here. It is advised to do so for security purposes. You can also configure the EW-7438RPn Air's IP address.



***Please make a note of the new password. In the event that you forget the password and are unable to login to the browser based configuration interface, see II-3. Reset to factory default settings for how to reset the device.***

- **Password Settings**

Current Password	<input type="text"/>
New Password	<input type="text"/>
Re-Enter Password	<input type="text"/>

- **2.4GHz**

<input checked="" type="radio"/> Obtain an IP address automatically:	
<input type="radio"/> Use the following IP address:	
IP Address	<input type="text" value="192.168.9.2"/>
Subnet Mask	<input type="text" value="255.255.255.0"/>
Default Gateway	<input type="text" value="0.0.0.0"/>

<b>Current Password</b>	Enter your current password.
<b>New Password</b>	Enter your new password.
<b>Confirmed Password</b>	Confirm your new password.

## 2.4GHz

To have your wireless router automatically assign an IP address to your extender (recommended), select “Obtain an IP address automatically”. To assign an IP address to your extender manually, select “Use the following IP address”.

<b>IP Address</b>	Specify an IP address here. This IP address will be assigned to your EW-7438RPn Air.
<b>Subnet Mask</b>	Input the subnet mask of the new IP address.
<b>Gateway Address</b>	Input the network’s gateway IP address.

### III-4-5. Configuration Tools

The “Configuration Tools” menu allows you to backup the EW-7438RPn Air’s settings, restore the settings to a previous version or restore the EW-7438RPn Air back to its factory default state. You can also upgrade the firmware, reboot the device and export the system log.

**Manage Settings**

Save the current settings of the device to a .bin file, restore the settings of the device to a previously saved .bin file or reset the device to its factory default settings.

Backup Settings :

Restore Settings :  No file chosen

Restore to Factory Defaults :

<b>Backup Settings</b>	Click “Save” to save the current settings on your computer as config.bin file.
<b>Restore Settings</b>	Click “Browse” to find a previously saved config.bin file and then click “Upload” to replace your current settings.
<b>Restore to Factory Default</b>	Click “Reset” to restore settings to the factory default. A pop-up window will appear and ask you to confirm and enter your log in details. Enter your username and password and click “Ok”. See below for more information.

## Upgrade Firmware

You can upgrade the system firmware to a more recent version. You can download the latest firmware from the Edimax website. After the upgrade, the system will restart.

Upgrade Firmware

Upgrade the firmware to the most recent version - it is recommended that you use a wired connection for the procedure.

No file chosen     



***Do not switch off or disconnect the device during a firmware upgrade, as this could damage the device. It is recommended that you use a computer for a firmware upgrade.***

<b>Browse</b>	Open a new window to locate and select the firmware file in your computer.
---------------	--



## Reboot

In the event that the extender malfunctions or is not responding, then it is recommended that you restart the device.

### Reboot

In the event that the device malfunctions or is not responding, you can perform a system reboot. Click on Apply - this will reboot the device, without affecting your existing settings.

Apply



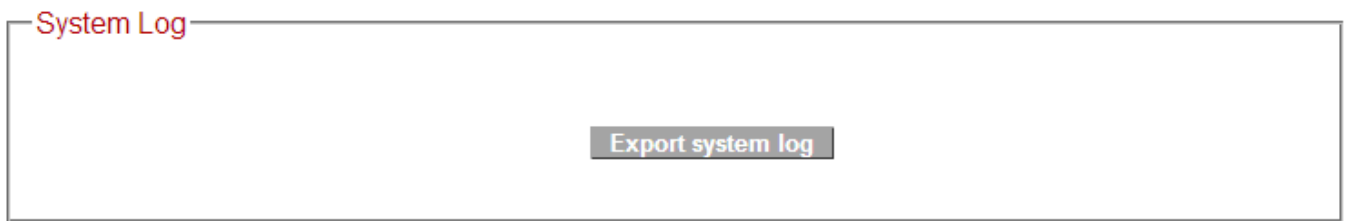
***Rebooting the EW-7438RPn Air will not affect the current configuration/settings of the device.***

### Apply

Click "Apply" to reboot the device. A status bar will indicate the progress of the reboot and you will see a confirmation screen when the reboot is complete.

## System Log

You can export the system log to a separate file if you require.



<b>Export system log</b>	Click to open a new window and select a location to save the log file.
--------------------------	--

## IV. EdiRange App

---

The EdiRange app is a free smartphone app from which you can manage the extender's functions and check your local Wi-Fi environment.

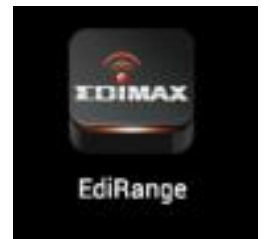


***Please ensure that your smartphone/tablet is connected to your extender's Wi-Fi (SSID).***

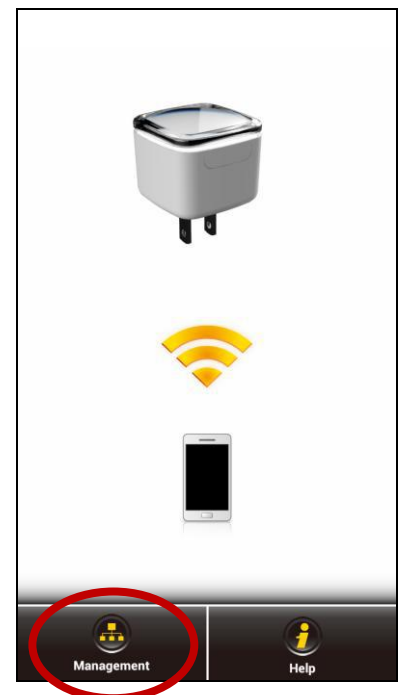
### IV-1. Login

After setup you can use the browser based configuration interface to configure advanced settings.

**1.** Open the EdiRange app.



**2.** Select "Management".



3. Enter the username and password (default username: *admin* default password: 1234).



***The admin password is the same password used for the browser based configuration interface. It is recommended that you change the password from the default “1234”. You can change the password in the “admin” page from the main menu.***

Login ?

Please Login (Default Password : 1234)

User Name : admin

Password :

Cancel Login

4. Wait for the app to log in.

Login ?

Please Login (Default Password : 1234)

User Name : admin

Password :

Cancel Login

Please wait a moment...

## IV-2. Main Menu

After you log in, the “Status” page will be displayed. You can see the extender status, SSID name, and guest network and schedule status here. Use the menu of icons across the bottom of the screen to navigate around the app.



### Logout

Click the logout icon in the top left corner of the app anytime to log out from the app.



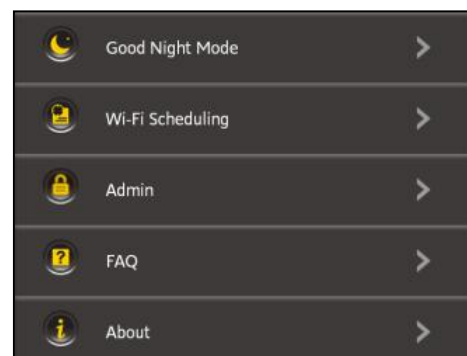
### Help

Click the help icon in the top right corner of the app anytime to display help and tips about using the app.



### More

Click the “more” icon in the main menu to display an additional menu with more options:

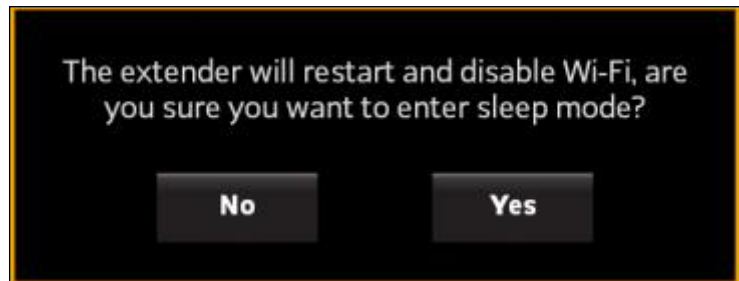
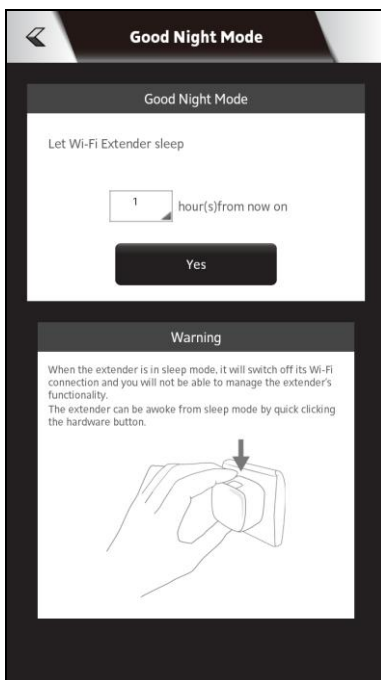


### IV-3. Good Night Mode

Good Night Mode will put the extender to “sleep” (switch off Wi-Fi and LED) for a specified number of hours. Enter the number of hours and click “Yes” to activate Good Night Mode.



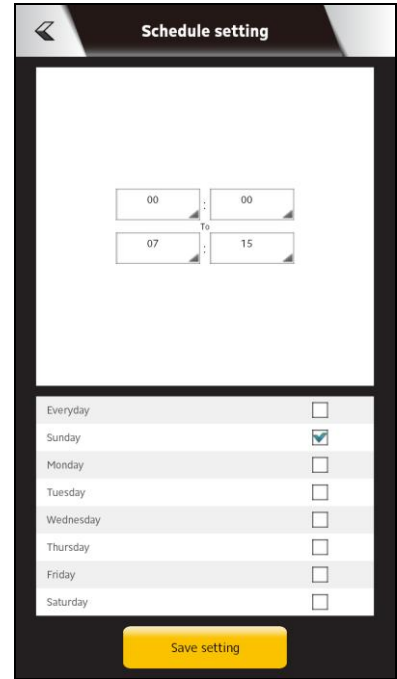
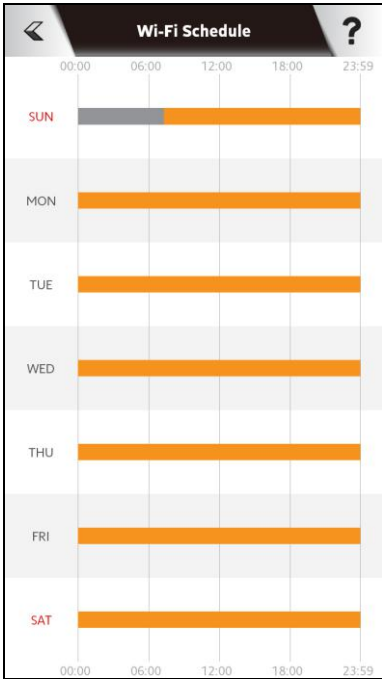
***Your mobile device will be disconnected from the extender during sleep mode since Wi-Fi is disabled. You can wake the extender (back to its fully functional state) anytime by manually pressing the WPS/Reset button.***



### IV-4. Wi-Fi Scheduling

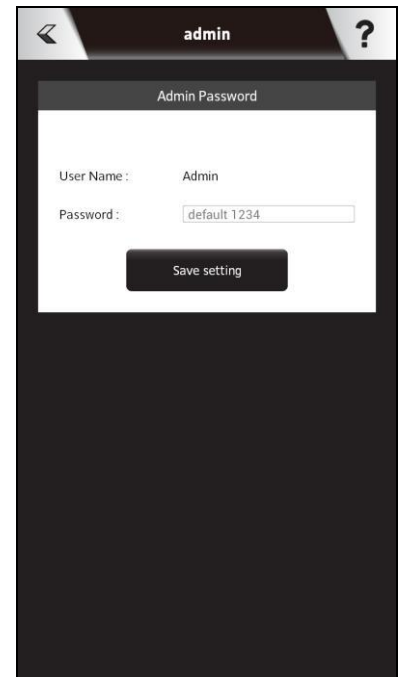
Wi-Fi can be scheduled to switch off according to your preference. Your current schedules are displayed in the table: grey areas indicate Wi-Fi is off and orange areas indicate Wi-Fi is on.

Touch the time bars on the screen to open the schedule settings, and then click “Add” or “Edit” to add a new or edit an existing schedule for Wi-Fi **off**. Daylight Savings can also be configured here.



## IV-5. Admin

You can change the extender’s administrative password on the Admin page. This is the password to login to the EdiRange app and the browser based configuration interface.



## V. Appendix

---

### V-1. Configuring your IP address

For first time access to the URL ***http://edimaxext.setup*** on a computer please ensure your computer is set to use a dynamic IP address. This means your computer can obtain an IP address automatically from a DHCP server. You can check if your computer is set to use a dynamic IP address by following **V-1-1. How to check that your computer uses a dynamic IP address.**

**Static IP users** can also temporarily modify your computer's IP address to be in the same IP address subnet e.g. **192.168.9.x (x = 3 – 254)** as the EW-7438RPn Air in order to access ***http://edimaxext.setup***.



***The EW-7438RPn Air's default IP address is 192.168.9.2.***

The procedure for modifying your IP address varies across different operating systems; please follow the guide appropriate for your operating system in **V-1-2. How to modify the IP address of your computer.**



***Static IP users please make a note of your static IP before you change it.***

You can assign a new IP address to the extender which is within the subnet of your network during setup or using the browser based configuration interface, so that you can access the URL ***http://edimaxext.setup*** in future without modifying your IP address.



***Please remember to change your IP address back to its original value after the device is properly configured.***

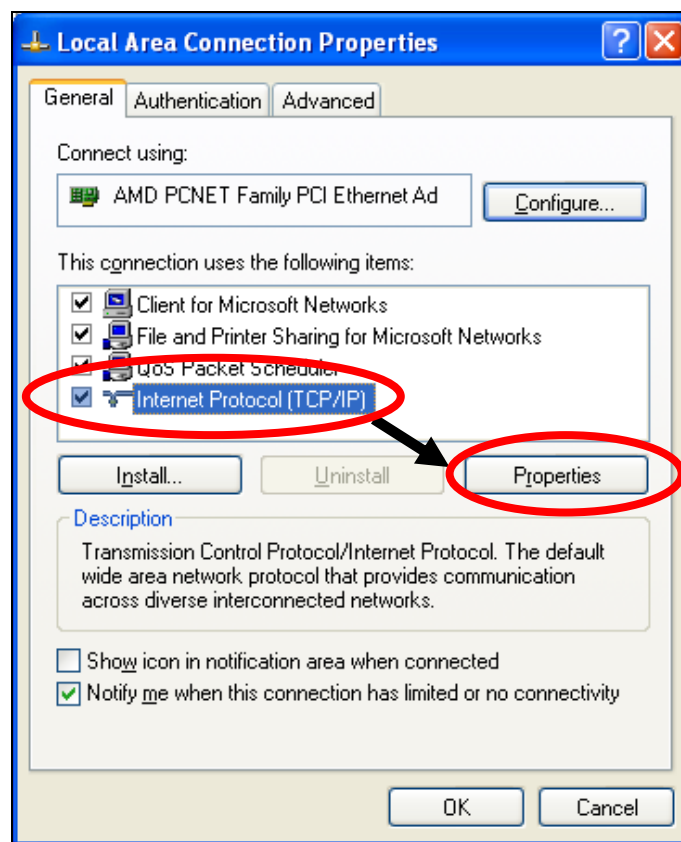


## V-1-1. How to check that your computer uses a dynamic IP address

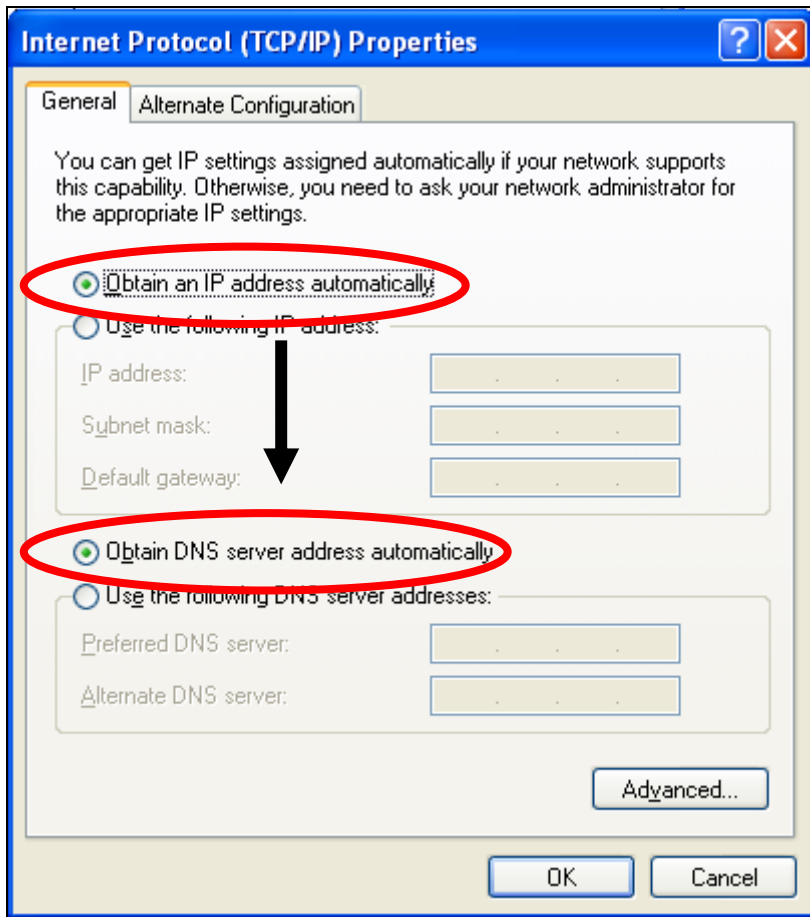
Please follow the instructions appropriate for your operating system.

### V-1-1-1. Windows XP

1. Click the “Start” button (it should be located in the lower-left corner of your computer), then click “Control Panel”. Double-click the “Network and Internet Connections” icon, click “Network Connections”, and then double-click “Local Area Connection”. The “Local Area Connection Status” window will then appear, click “Properties”.

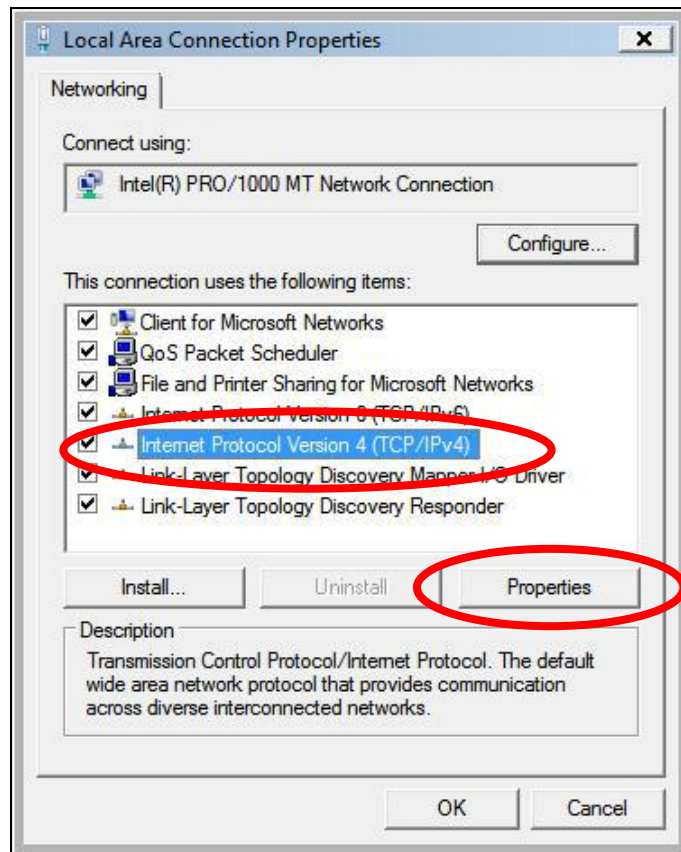


2. “Obtain an IP address automatically” and “Obtain DNS server address automatically” should be selected.

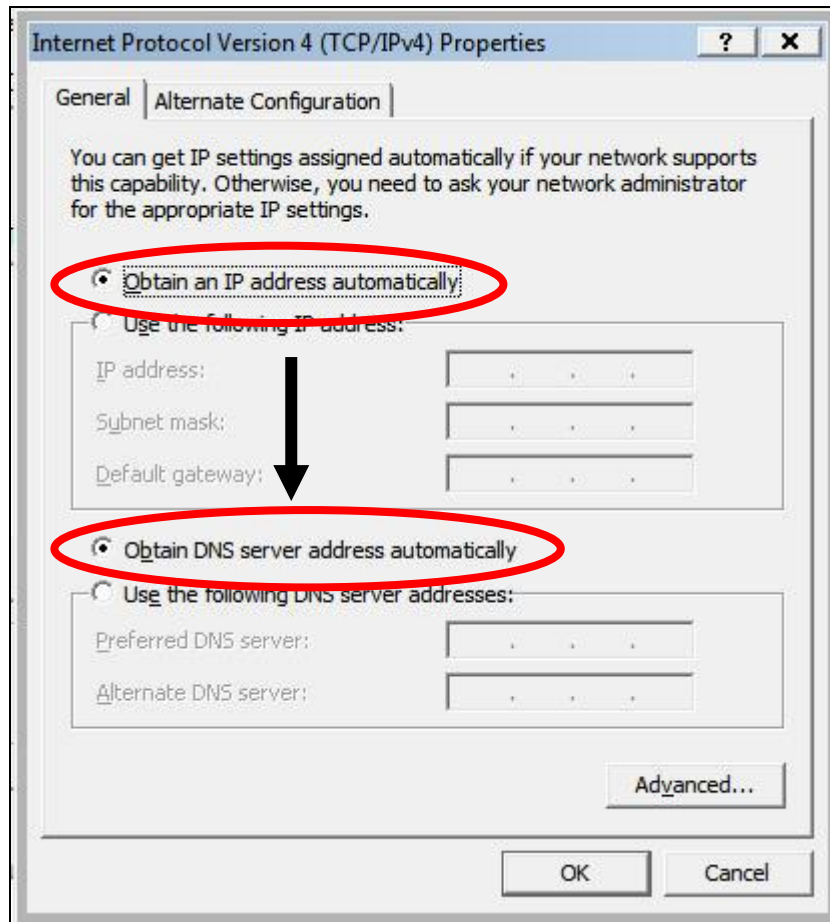


## V-1-1-2. Windows Vista

1. Click the “Start” button (it should be located in the lower-left corner of your computer), then click “Control Panel”. Click “View Network Status and Tasks”, then click “Manage Network Connections”. Right-click “Local Area Network”, then select “Properties”. The “Local Area Connection Properties” window will then appear, select “Internet Protocol Version 4 (TCP / IPv4)”, and then click “Properties”.

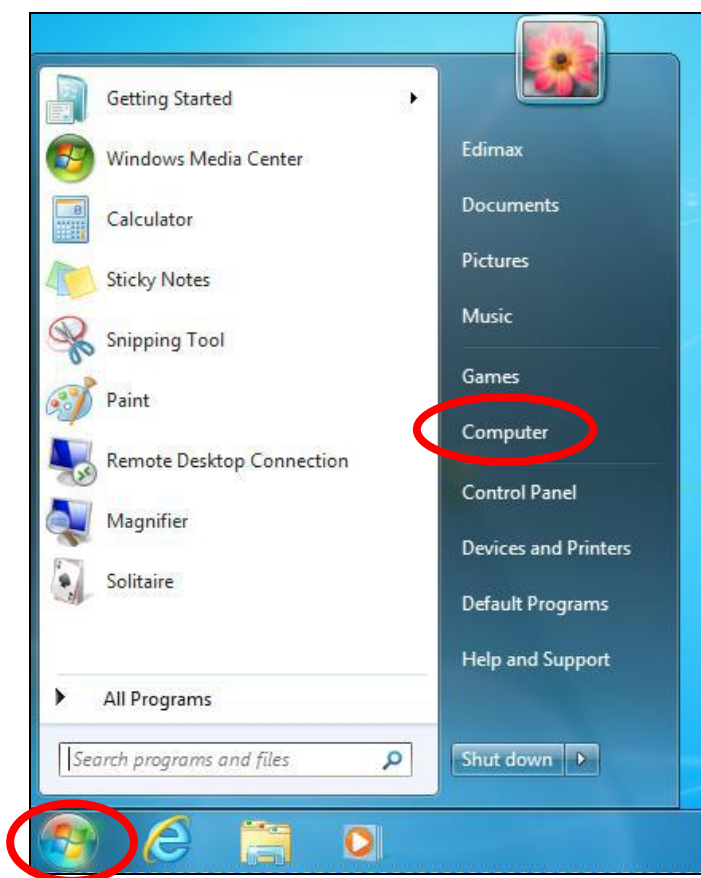


2. Select “Obtain an IP address automatically” and “Obtain DNS server address automatically” should be selected.

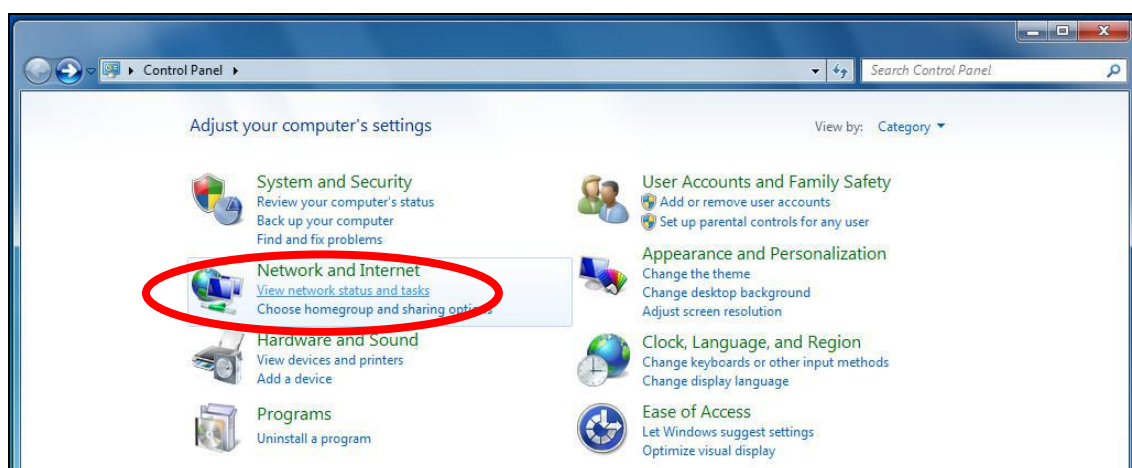


### V-1-1-3. Windows 7

1. Click the “Start” button (it should be located in the lower-left corner of your computer), then click “Control Panel”.



2. Under “Network and Internet” click “View network status and tasks”.



3. Click “Local Area Connection”.

View your basic network information and set up connections

TS-WIN7 (This computer) — Home network — ~~Internet~~ [See full map](#)

View your active networks [Connect or disconnect](#)

**Home network**  
Home network

Access type: No Internet access  
HomeGroup: [Ready to create](#)  
Connections: [Local Area Connection](#)

4. Click “Properties”.

Local Area Connection Status

General

Connection

IPv4 Connectivity:	No Internet access
IPv6 Connectivity:	No network access
Media State:	Enabled
Duration:	02:08:52
Speed:	100.0 Mbps

[Details...](#)

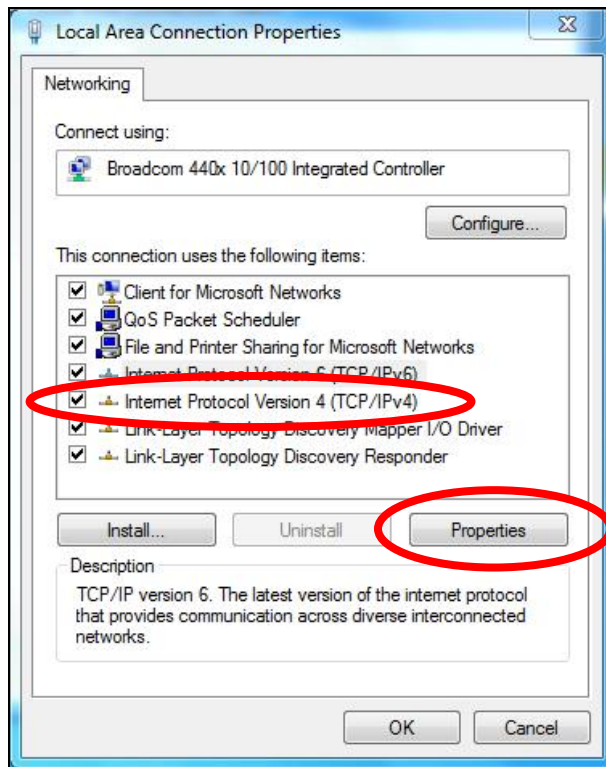
Activity

	Sent	Received
Bytes:	951,332	4,398,184

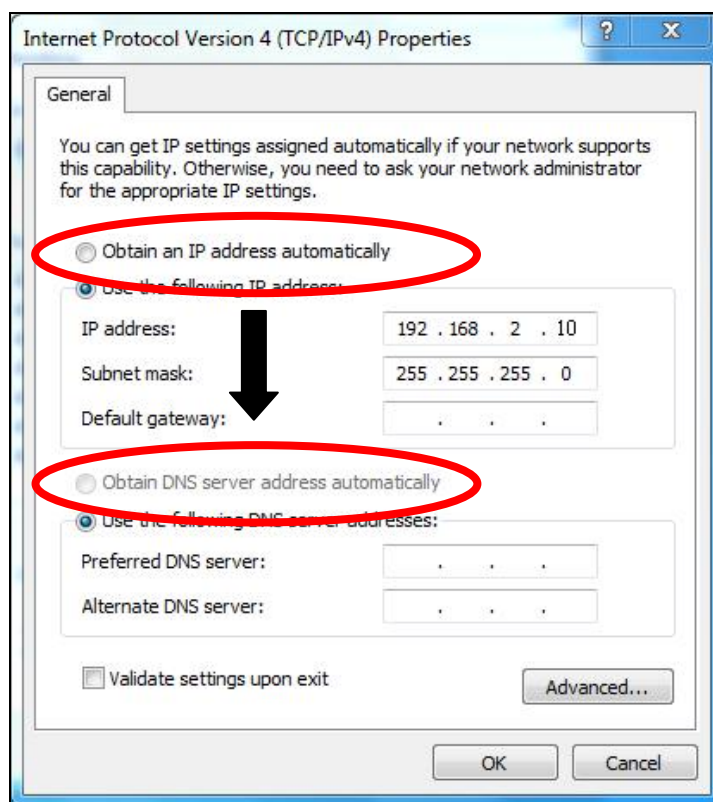
[Properties](#) [Disable](#) [Diagnose](#)

[Close](#)

5. Select “Internet Protocol Version 4 (TCP/IPv4) and then click “Properties”.



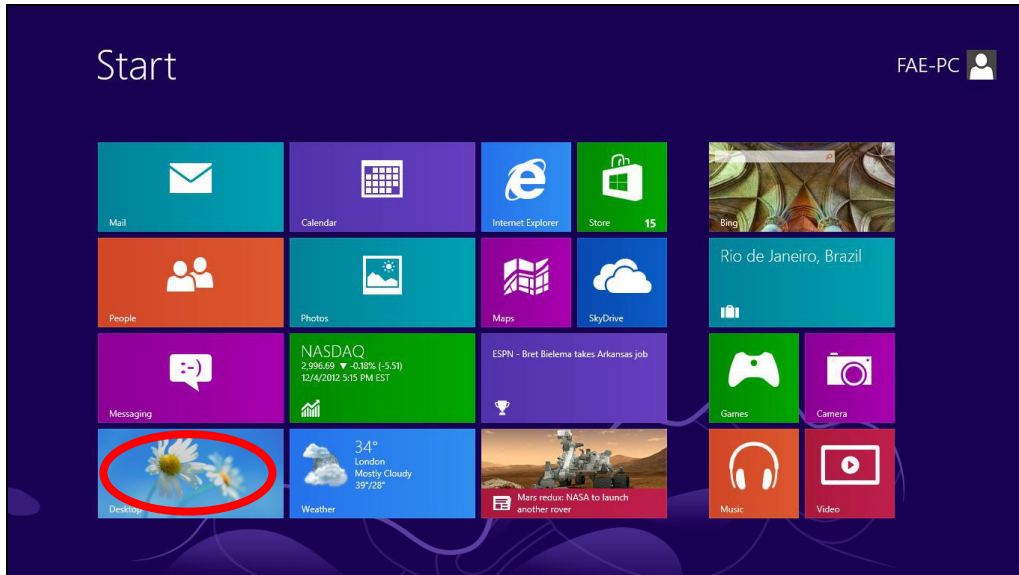
6. Select “Obtain an IP address automatically” and “Obtain DNS server address automatically” should be selected.



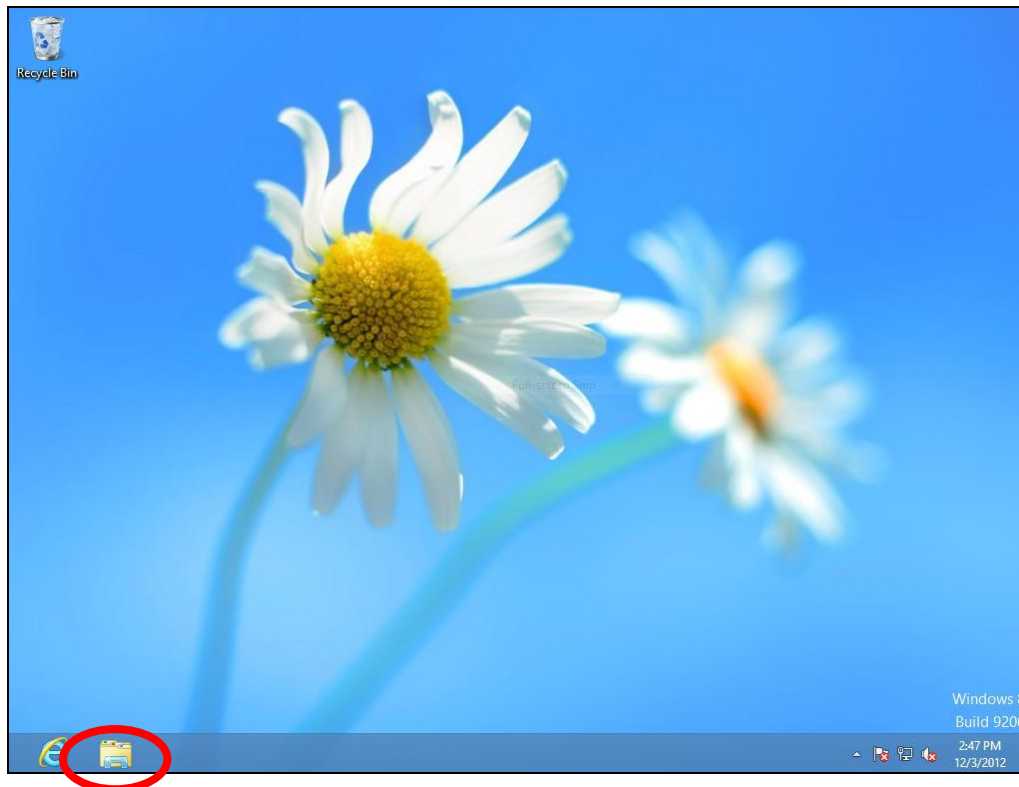


## V-1-1-4. Windows 8

1. From the Windows 8 Start screen, you need to switch to desktop mode. Move your cursor to the bottom left of the screen and click.

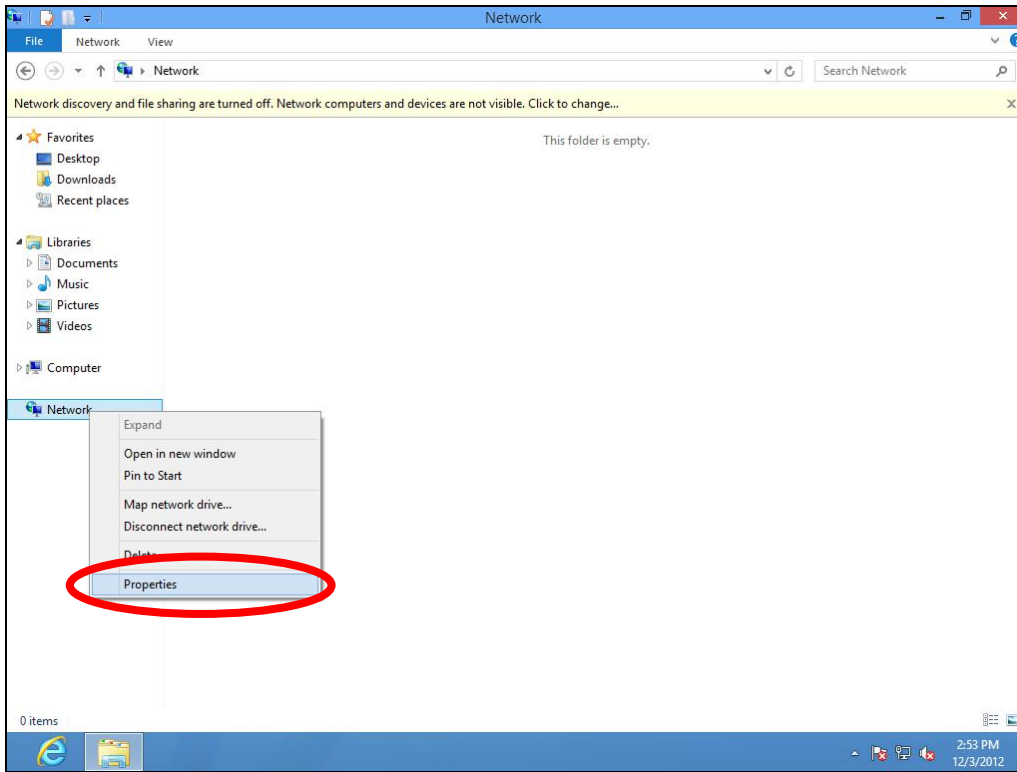


2. In desktop mode, click the File Explorer icon in the bottom left of the screen, as shown below.

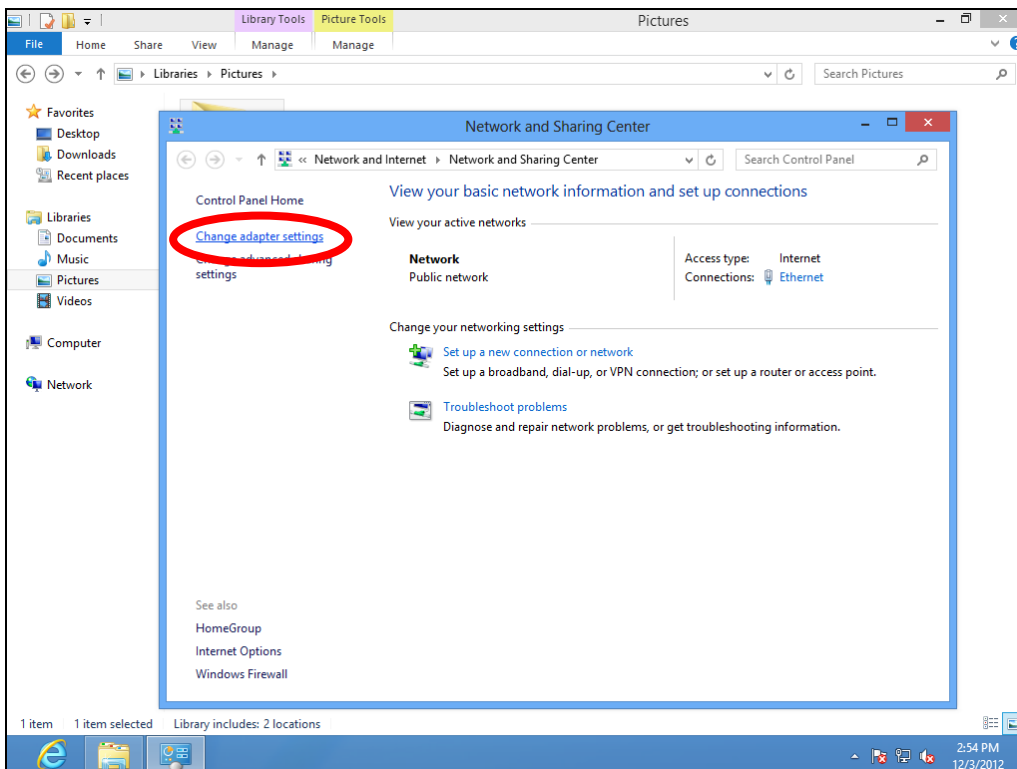


3. Right click "Network" and then select "Properties".

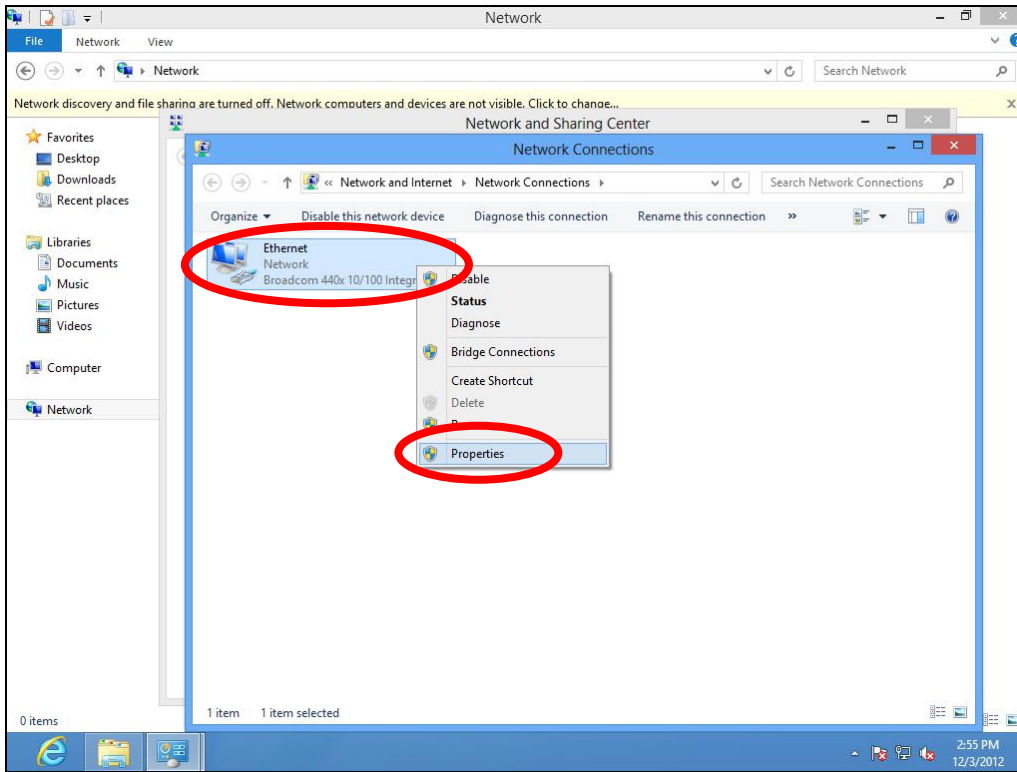




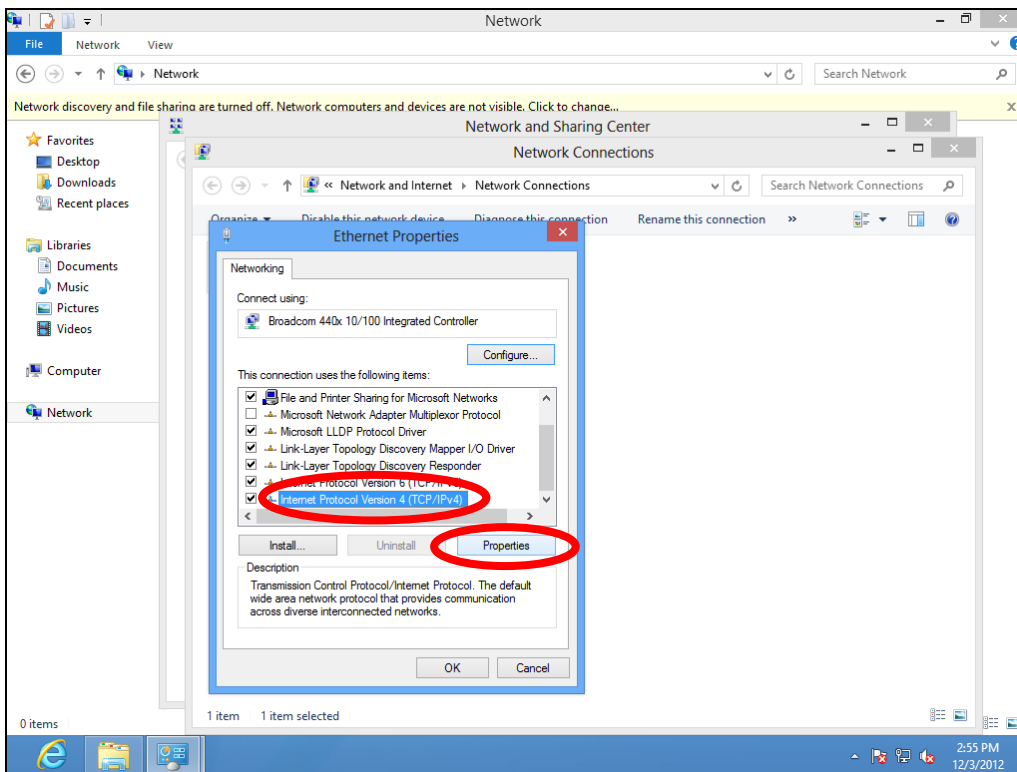
4. In the window that opens, select “Change adapter settings” from the left side.



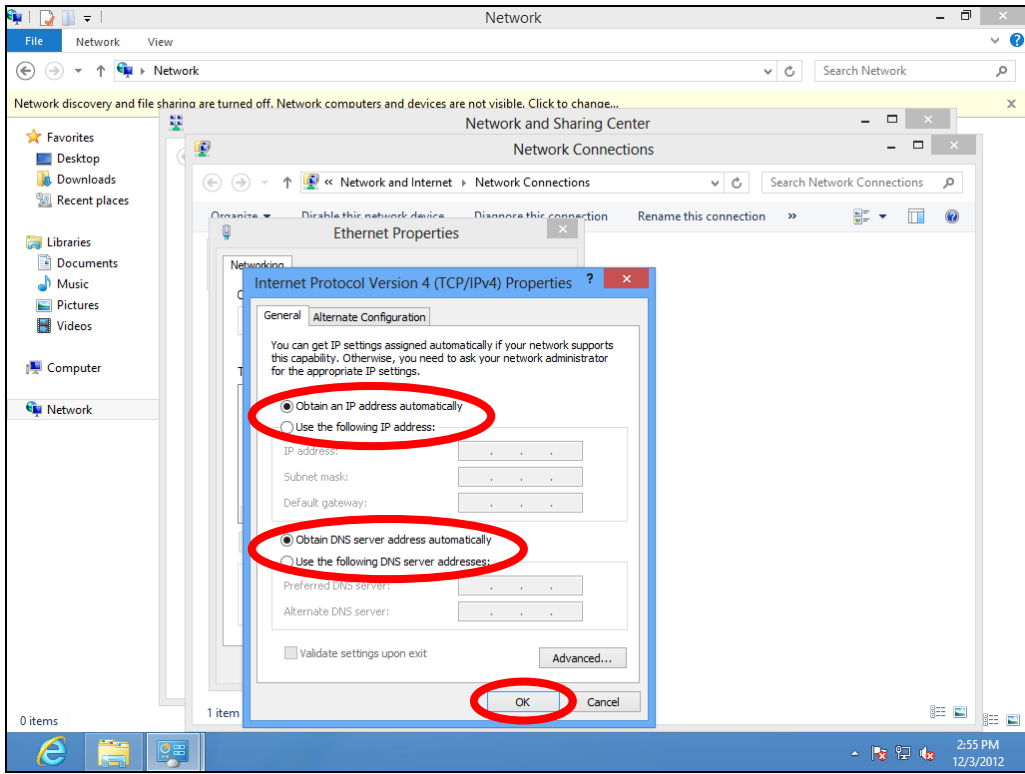
5. Choose your connection and right click, then select “Properties”.



6. Select “Internet Protocol Version 4 (TCP/IPv4) and then click “Properties”.



7. Select “Obtain an IP address automatically” and “Obtain DNS server address automatically” should be selected.



## V-1-1-5. Mac OS

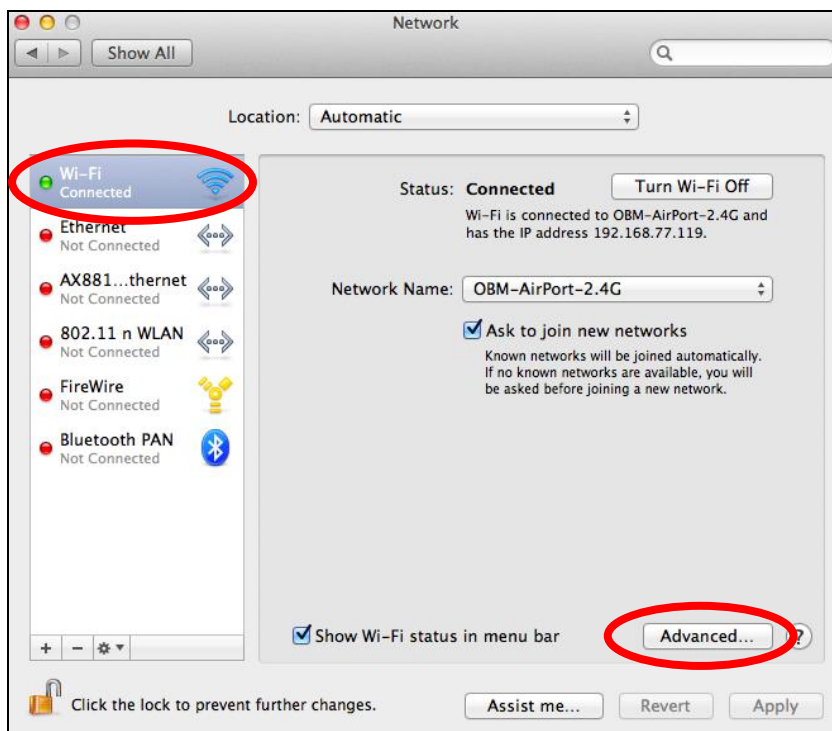
1. Have your Macintosh computer operate as usual, and click on “System Preferences”.



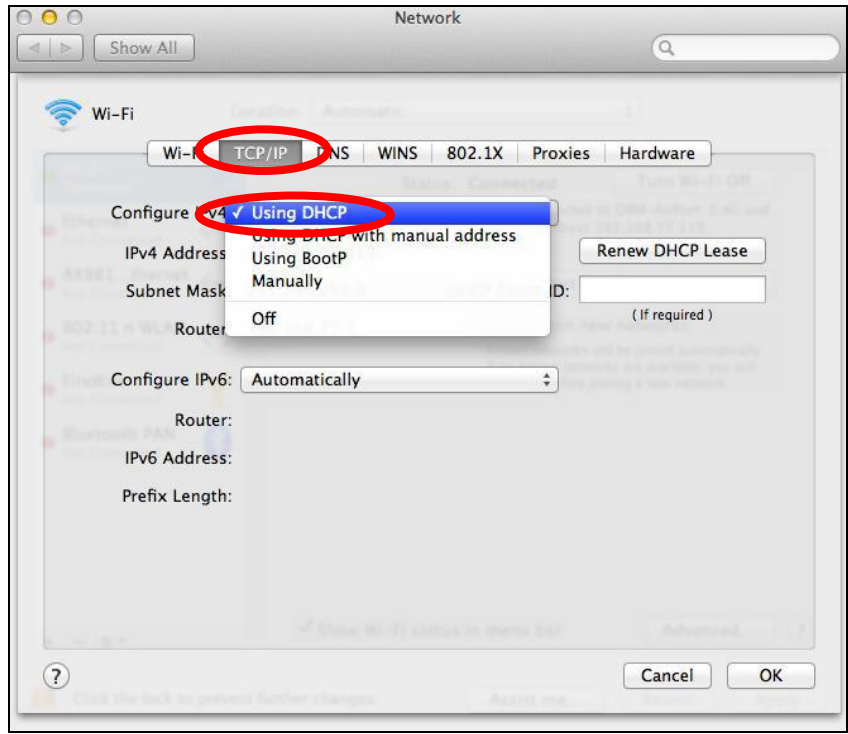
2. In System Preferences, click on “Network”.



3. Click on “Wi-Fi” in the left panel and then click “Advanced” in the lower right corner.



4. Select “TCP/IP” from the top menu and “Using DHCP” in the drop down menu labeled “Configure IPv4” should be selected.



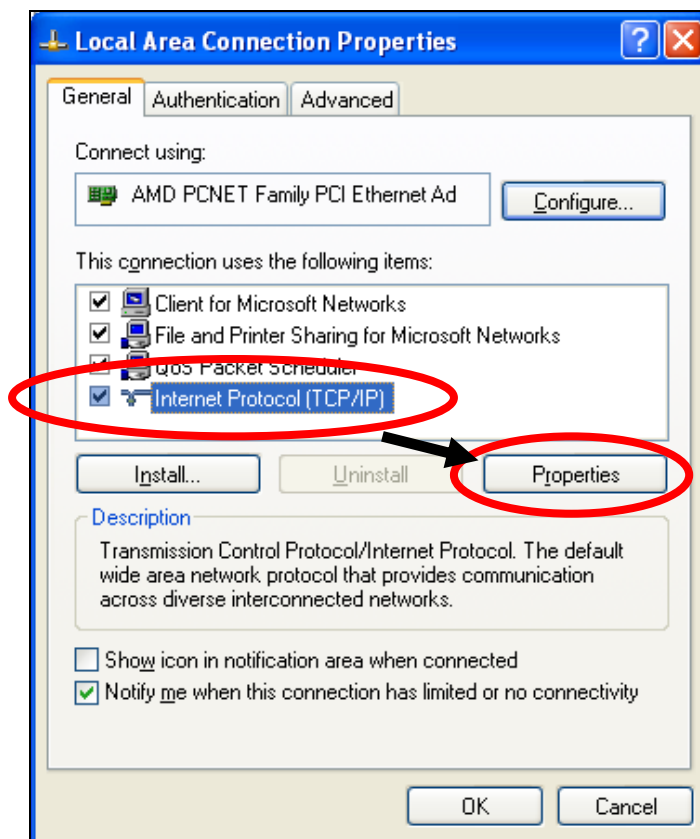
## V-1-2. How to modify the IP address of your computer

Please follow the instructions appropriate for your operating system. In the following examples we use the IP address **192.168.9.20** though you can use any IP address in the range **192.168.9.x (x = 3 – 254)** in order to access iQ Setup/browser based configuration interface.

 **Please make a note of your static IP before you change it.**

### V-1-2-1. Windows XP

1. Click the “Start” button (it should be located in the lower-left corner of your computer), then click “Control Panel”. Double-click the “Network and Internet Connections” icon, click “Network Connections”, and then double-click “Local Area Connection”. The “Local Area Connection Status” window will then appear, click “Properties”.



2. Select “Use the following IP address”, then input the following values:

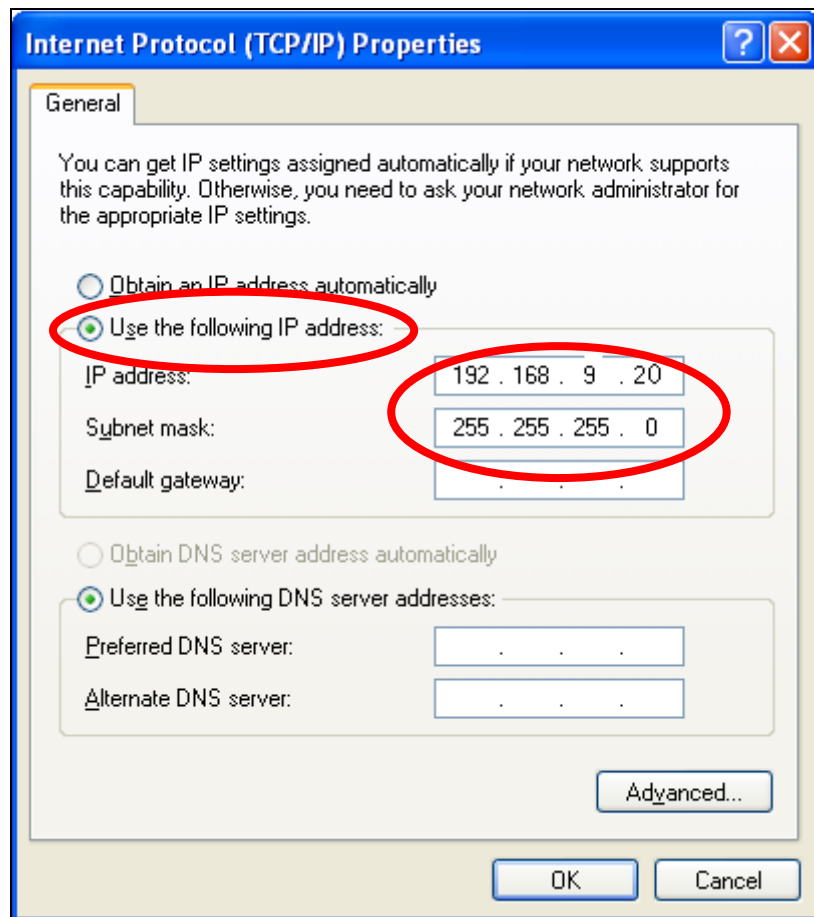
 **Your existing static IP address will be displayed in the “IP address” field before you replace it. Please make a note of this IP**

***address, subnet mask, default gateway and DNS server addresses.***

**IP address:** 192.168.9.20

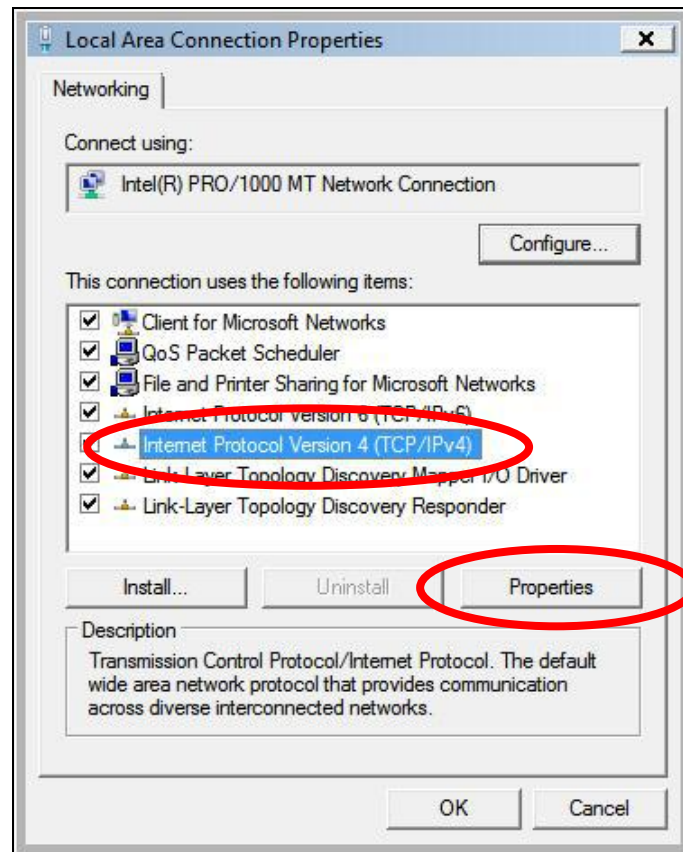
**Subnet Mask:** 255.255.255.0

Click 'OK' when finished.



## V-1-2-2. Windows Vista

1. Click the “Start” button (it should be located in the lower-left corner of your computer), then click “Control Panel”. Click “View Network Status and Tasks”, then click “Manage Network Connections”. Right-click “Local Area Network”, then select “Properties”. The “Local Area Connection Properties” window will then appear, select “Internet Protocol Version 4 (TCP / IPv4)”, and then click “Properties”.



2. Select “Use the following IP address”, then input the following values:



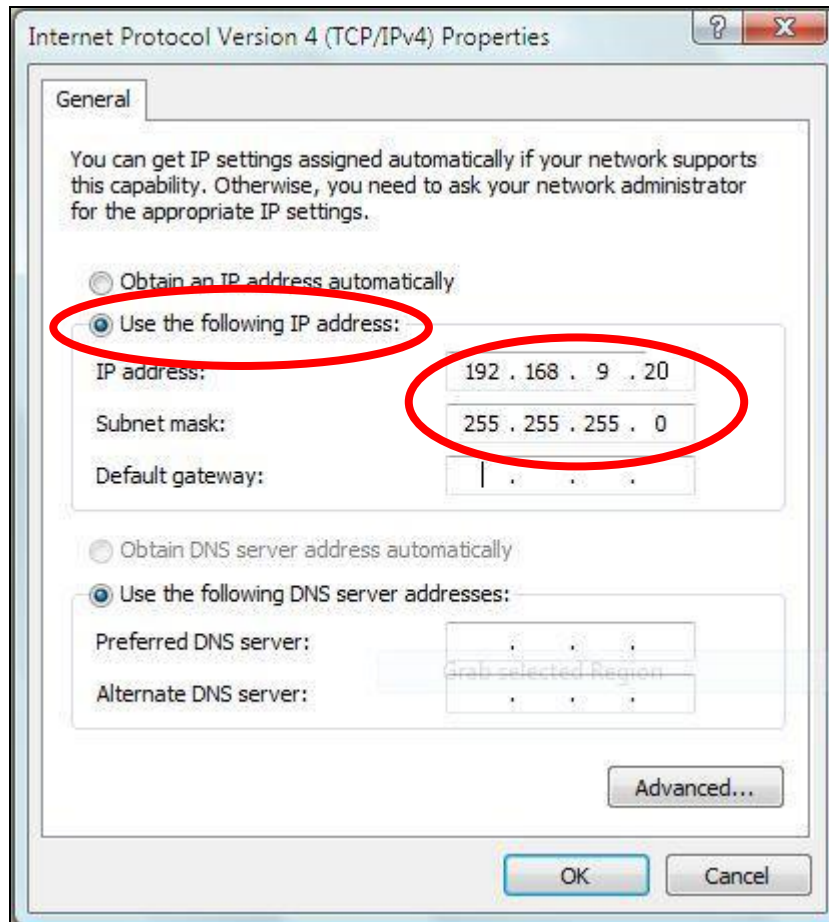
***Your existing static IP address will be displayed in the “IP address” field before you replace it. Please make a note of this IP address, subnet mask, default gateway and DNS server addresses.***

**IP address:** 192.168.9.20

**Subnet Mask:** 255.255.255.0

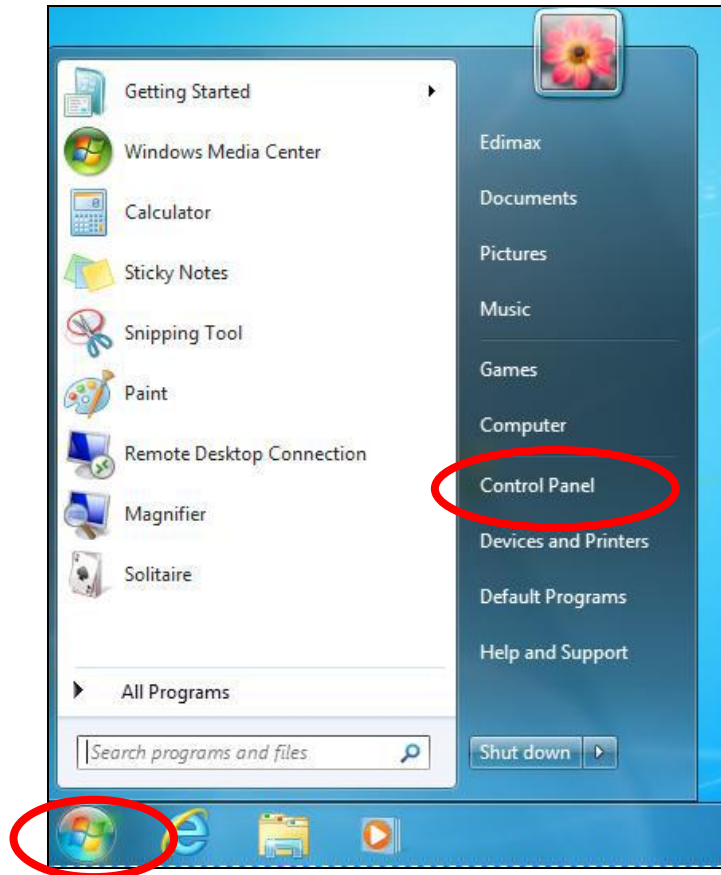
Click ‘OK’ when finished.



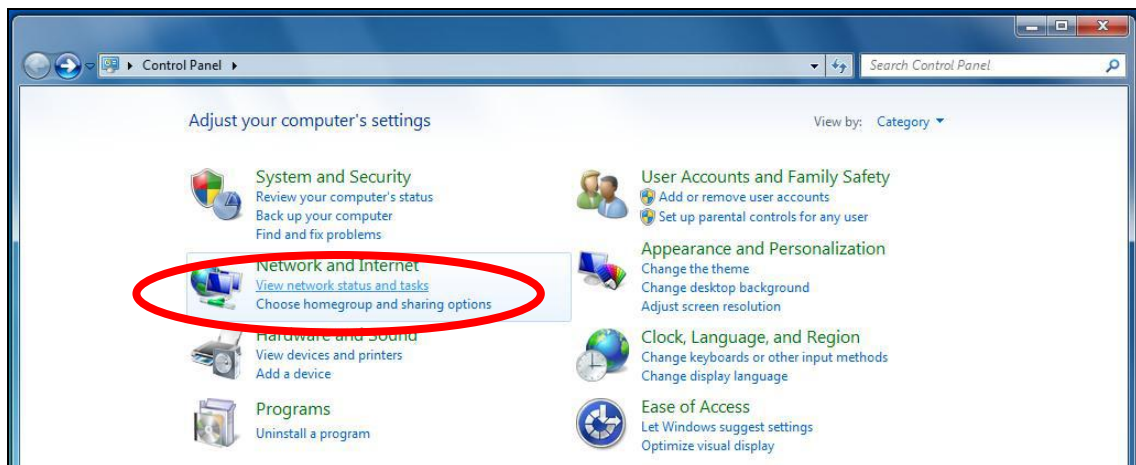


### V-1-2-3. Windows 7

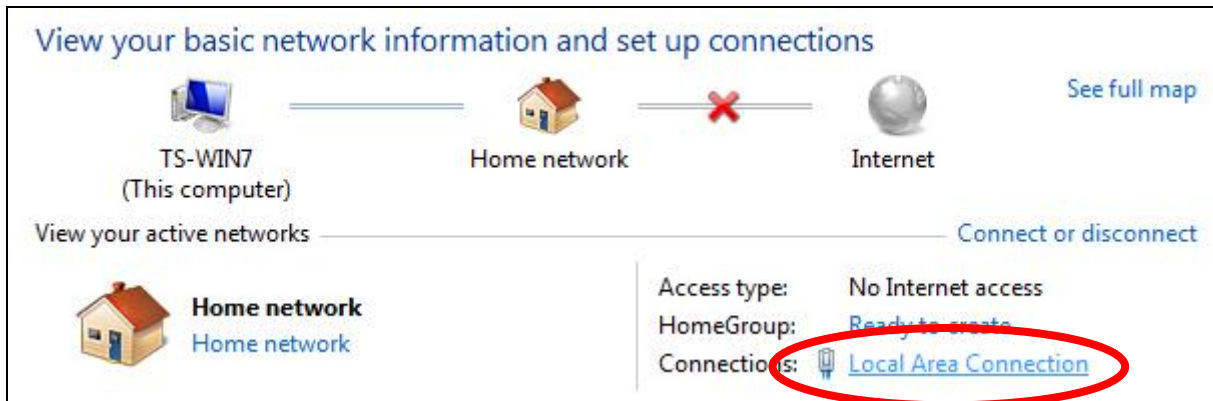
1. Click the “Start” button (it should be located in the lower-left corner of your computer), then click “Control Panel”.



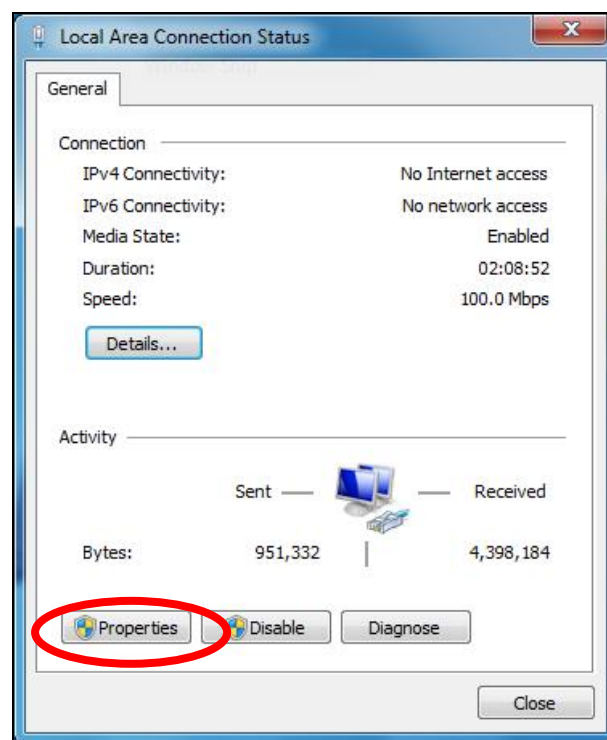
2. Under “Network and Internet” click “View network status and tasks”.



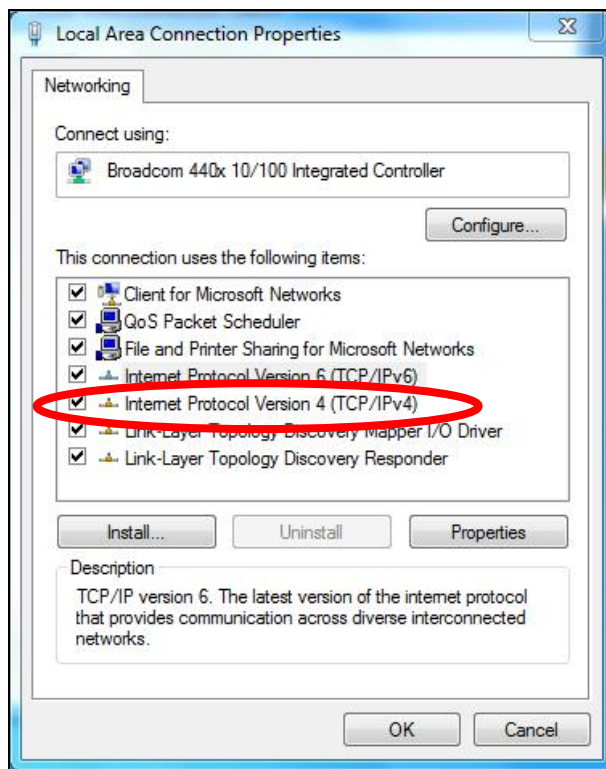
3. Click “Local Area Connection”.




4. Click “Properties”.



5. Select “Internet Protocol Version 4 (TCP/IPv4) and then click “Properties”.



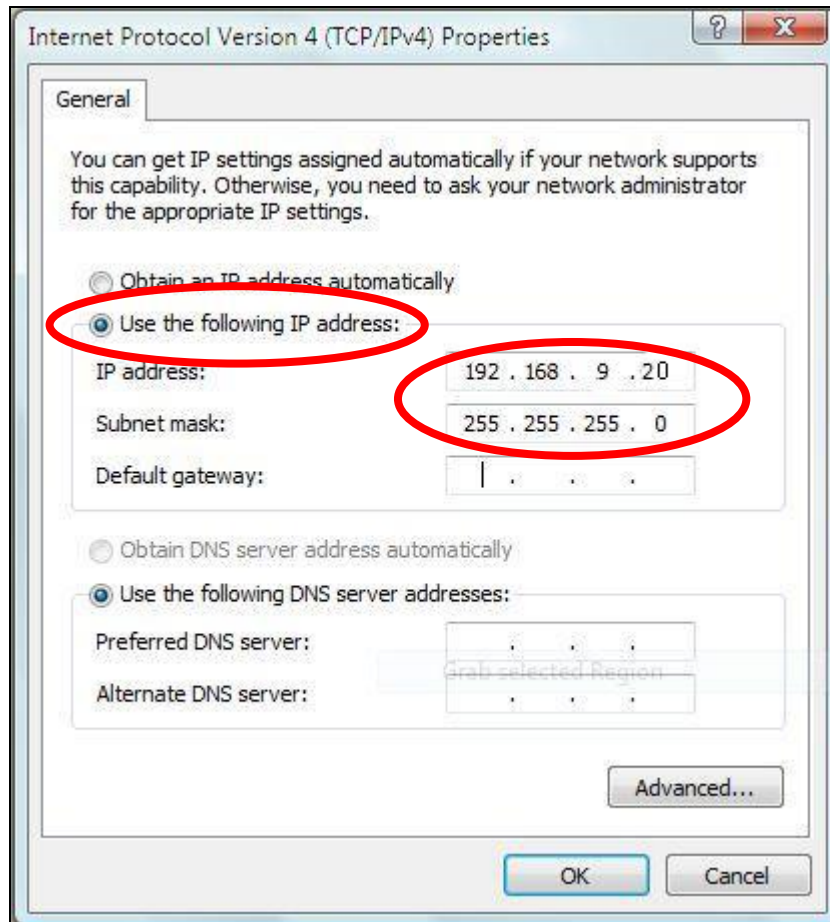
6. Select “Use the following IP address”, then input the following values:

 ***Your existing static IP address will be displayed in the “IP address” field before you replace it. Please make a note of this IP address, subnet mask, default gateway and DNS server addresses.***

**IP address:** 192.168.9.20

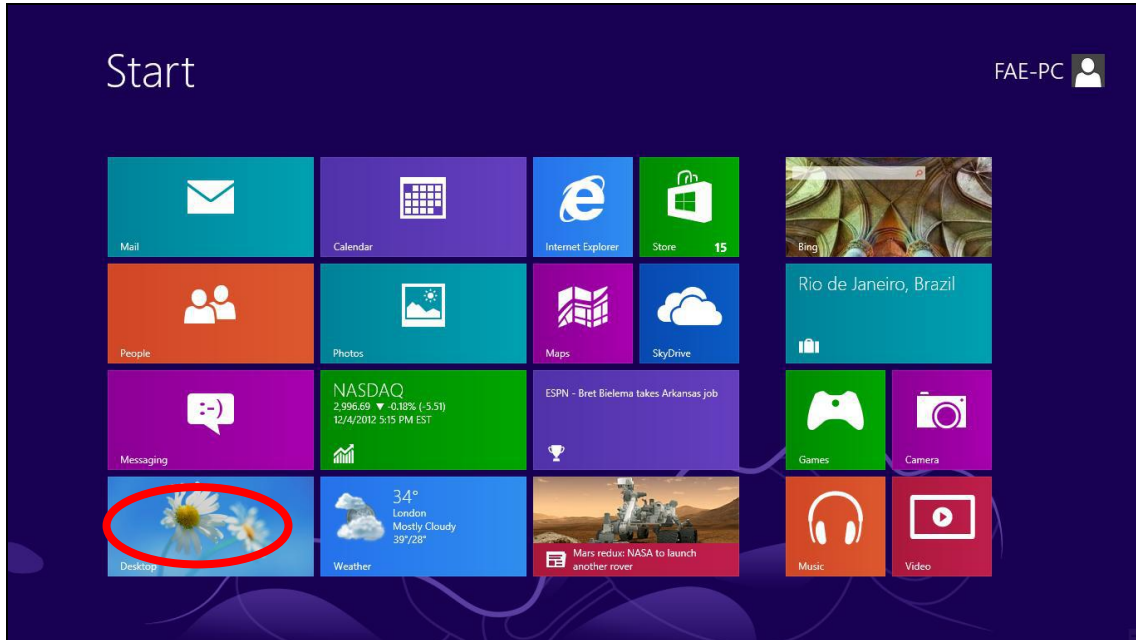
**Subnet Mask:** 255.255.255.0

Click ‘OK’ when finished.

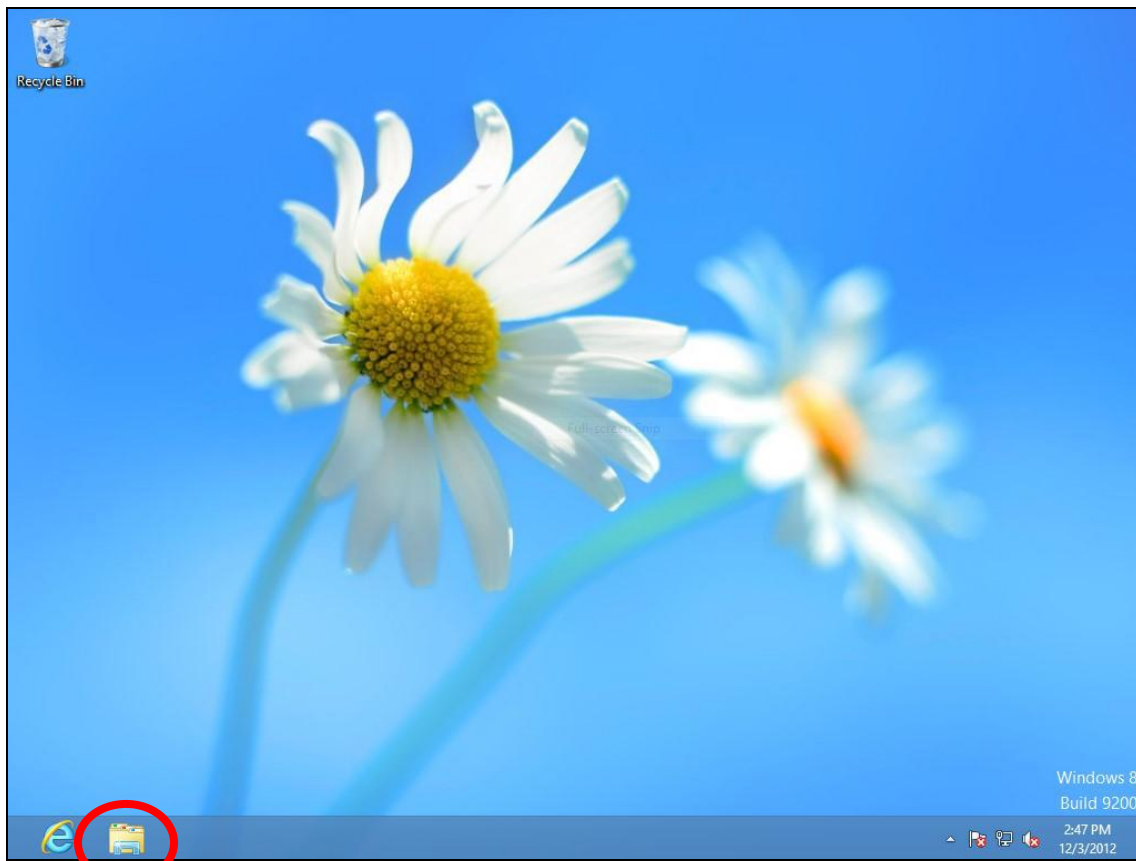


## V-1-2-4. Windows 8

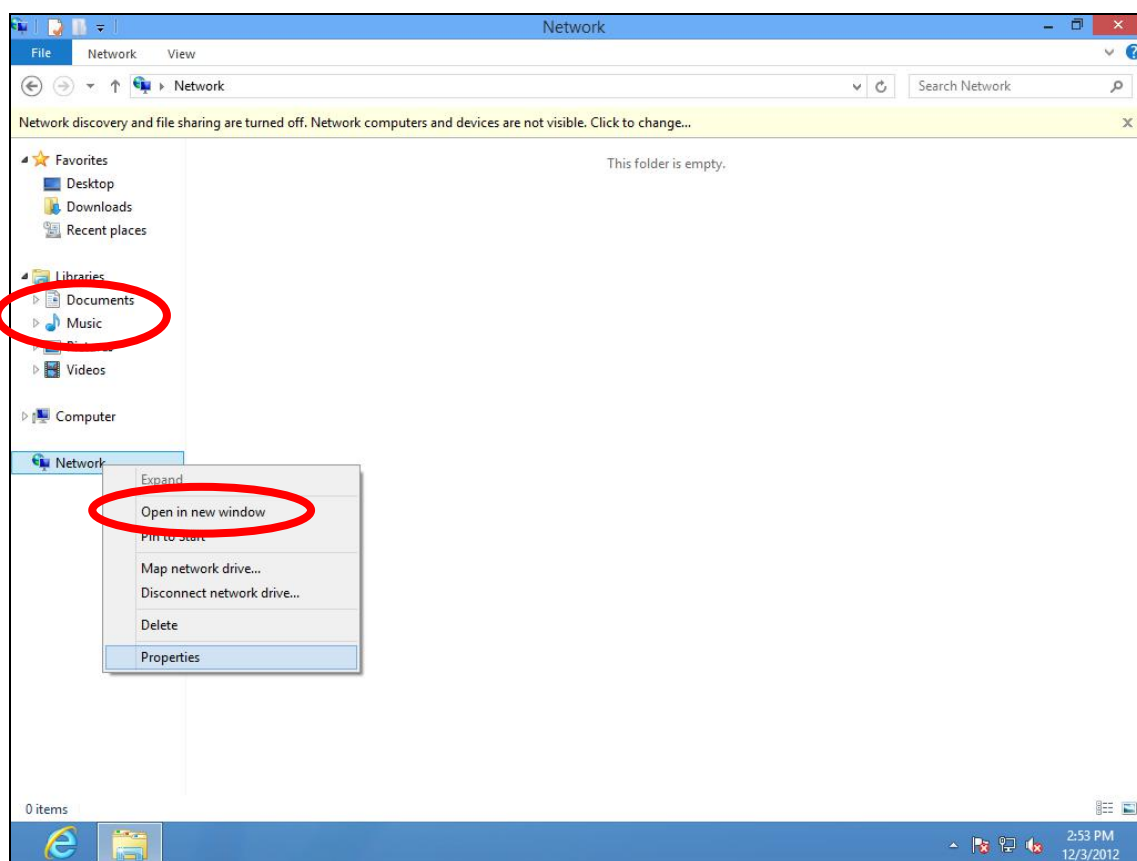
1. From the Windows 8 Start screen, you need to switch to desktop mode. Move your cursor to the bottom left of the screen and click.



2. In desktop mode, click the File Explorer icon in the bottom left of the screen, as shown below.

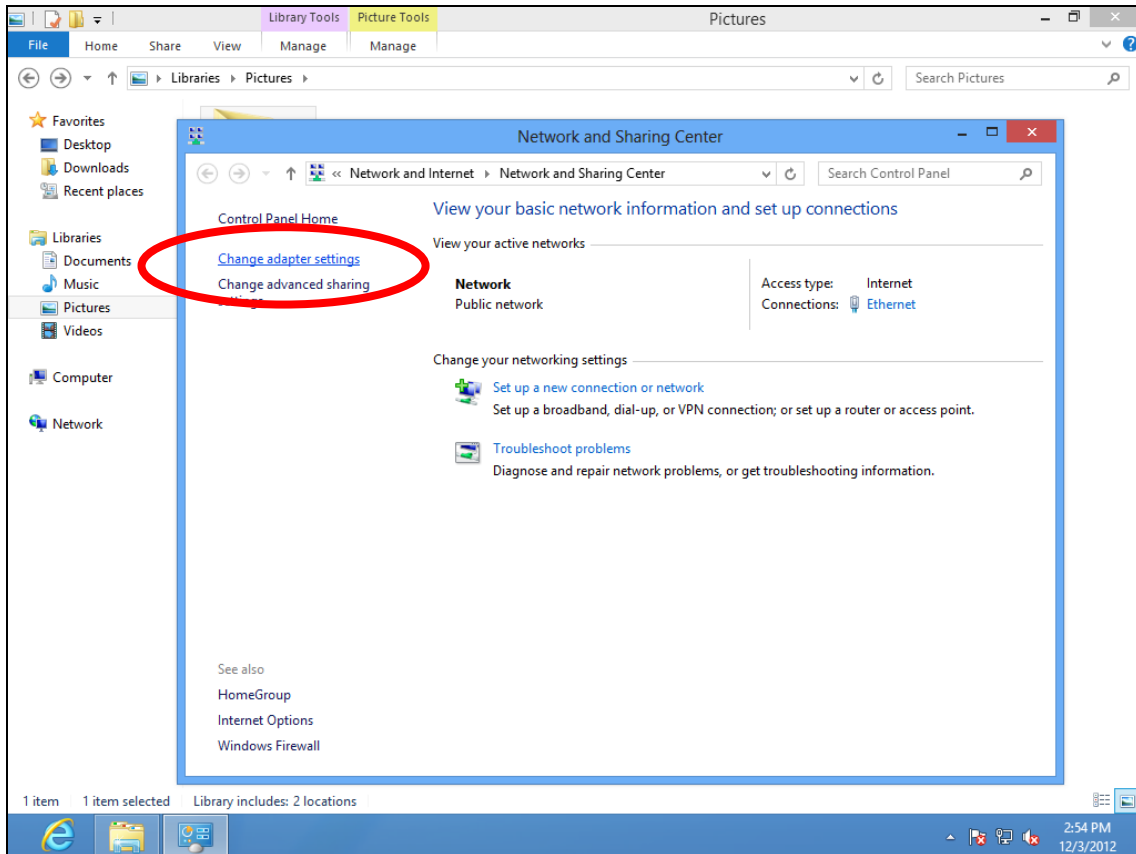


3. Right click “Network” and then select “Properties”.

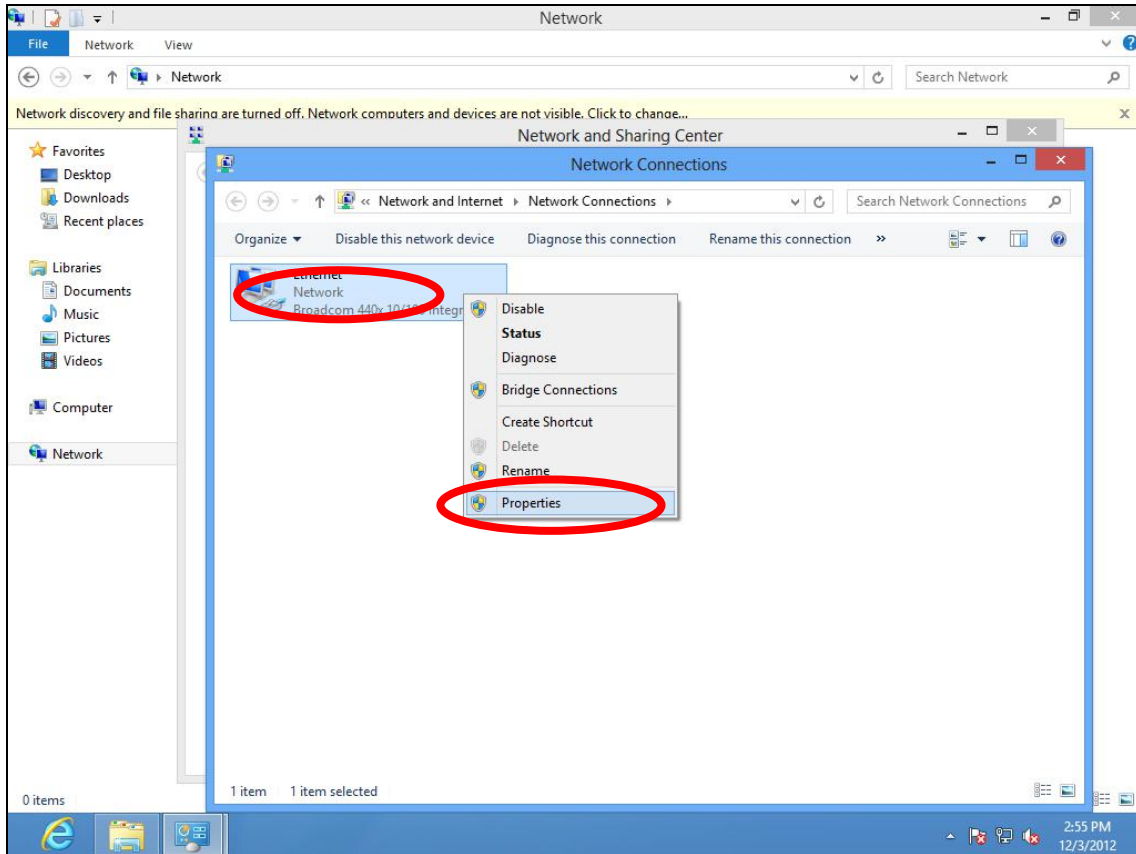


4. In the window that opens, select “Change adapter settings” from the left side.



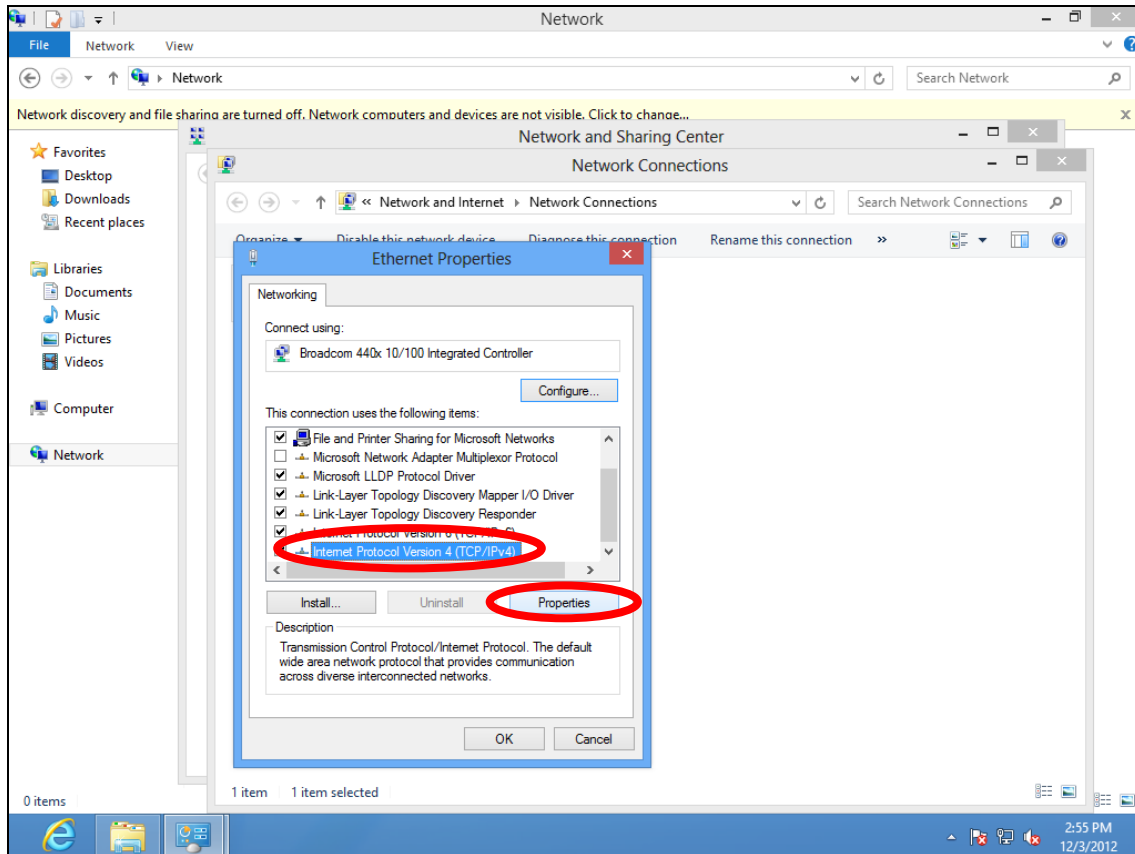


5. Choose your connection and right click, then select “Properties”.



6. Select “Internet Protocol Version 4 (TCP/IPv4)” and then click “Properties”.





7. Select “Use the following IP address”, then input the following values:



***Your existing static IP address will be displayed in the “IP address” field before you replace it. Please make a note of this IP address, subnet mask, default gateway and DNS server addresses.***

**IP address:** 192.168.9.20

**Subnet Mask:** 255.255.255.0

Click ‘OK’ when finished.

## V-1-2-5. Mac

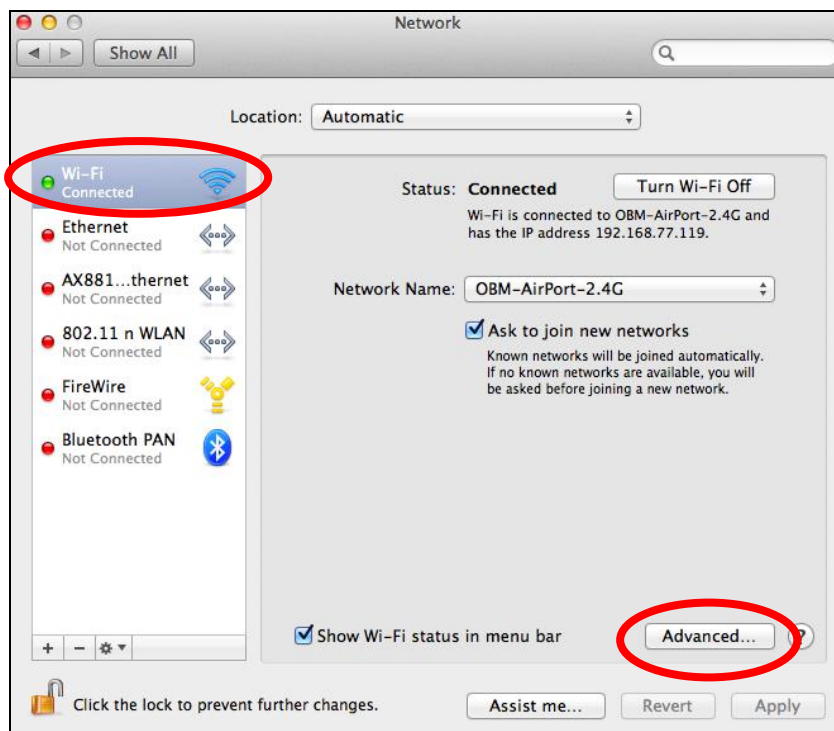
1. Have your Macintosh computer operate as usual, and click on “System Preferences”



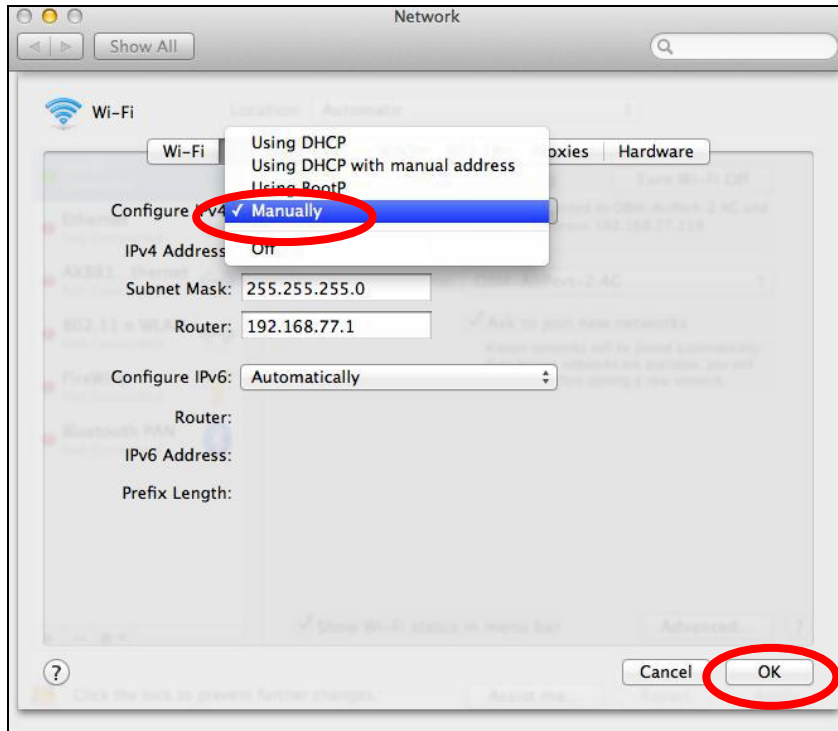
2. In System Preferences, click on “Network”.




3. Click on “Wi-Fi” in the left panel and then click “Advanced” in the lower right corner.

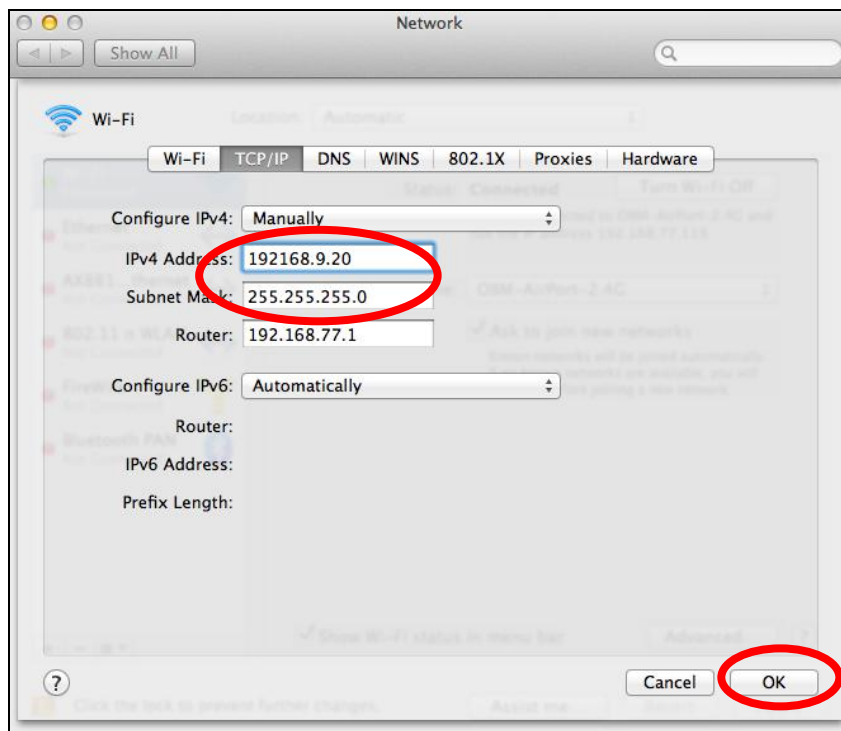


4. Select “TCP/IP” from the top menu and select “Manually” from the drop down menu labeled “Configure IPv4”, then click “OK”.

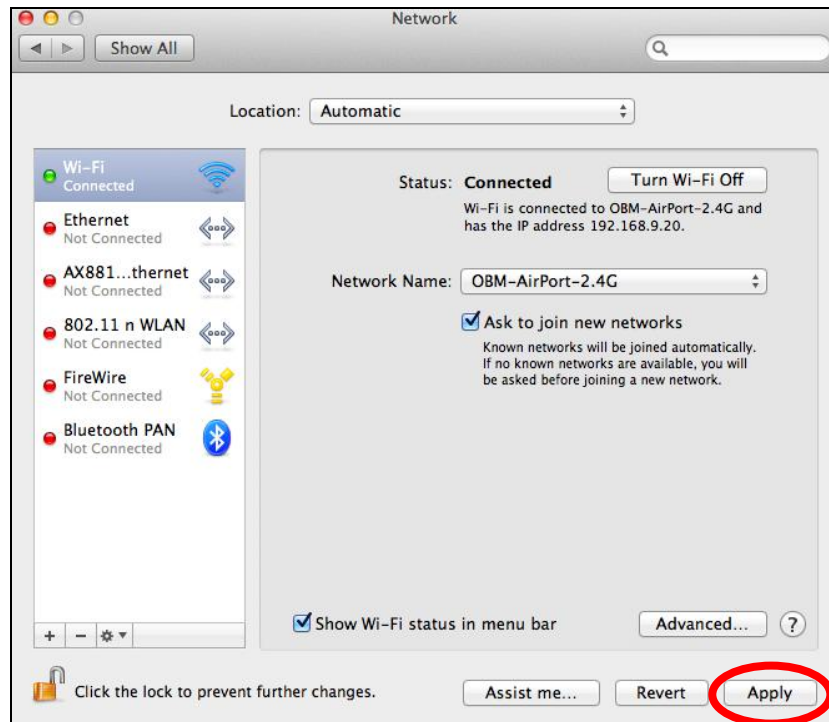


 **Your existing static IP address will be displayed in the “IP address” field before you replace it. Please make a note of this IP address, subnet mask, default gateway and DNS server addresses.**

5. In the “IPv4 Address” and “Subnet Mask” field enter IP address 192.168.9.20 and subnet mask 255.255.255.0. Click on “OK”.




## 6. Click “Apply” to save the changes.



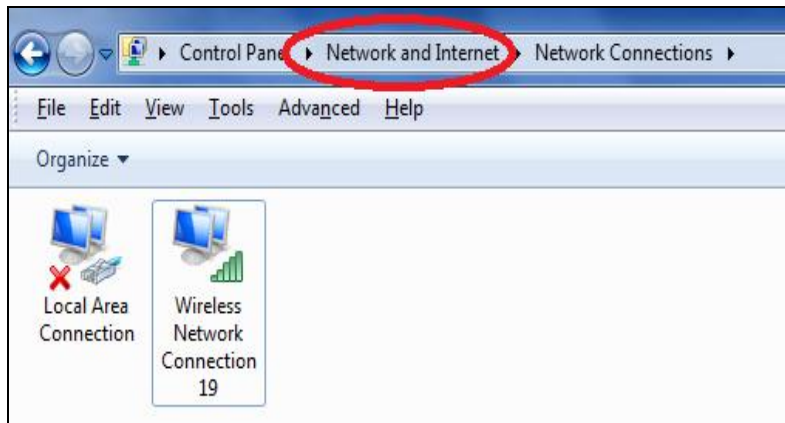
### V-1-3. How to Find Your Network Security Key

To find your network security key, please follow the instructions appropriate for your operating system.

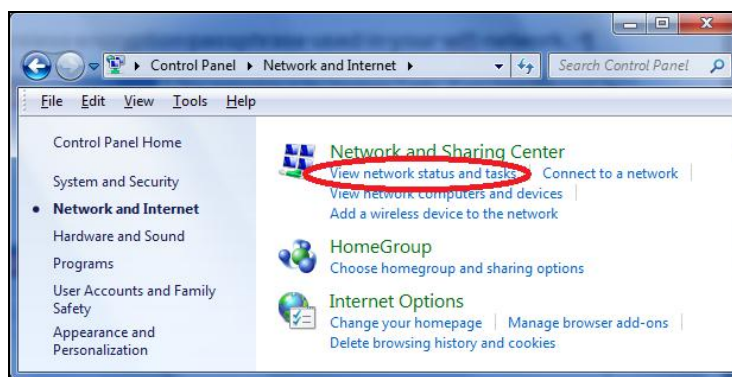
 ***If you are using Windows XP or earlier, please contact your ISP or router manufacturer to find your network security key.***

#### V-1-3-1. Windows 7 & Vista

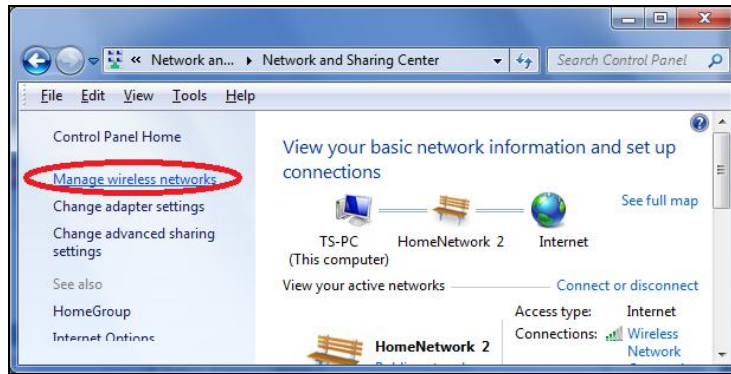
1. Open “Control Panel” and click on “Network and Internet” in the top menu.



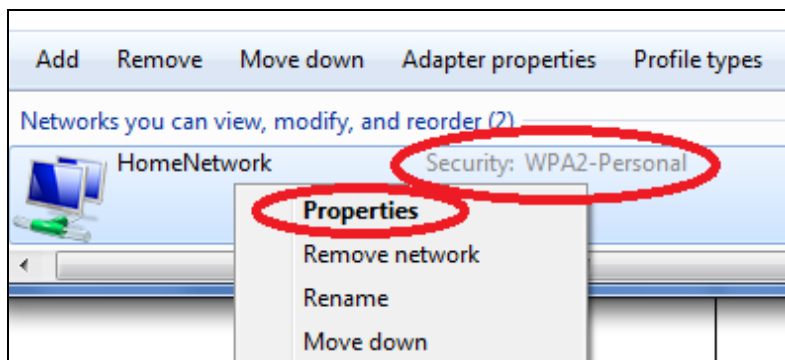
2. Click on “View network status and tasks” which is under the heading “Network and Sharing Center”.



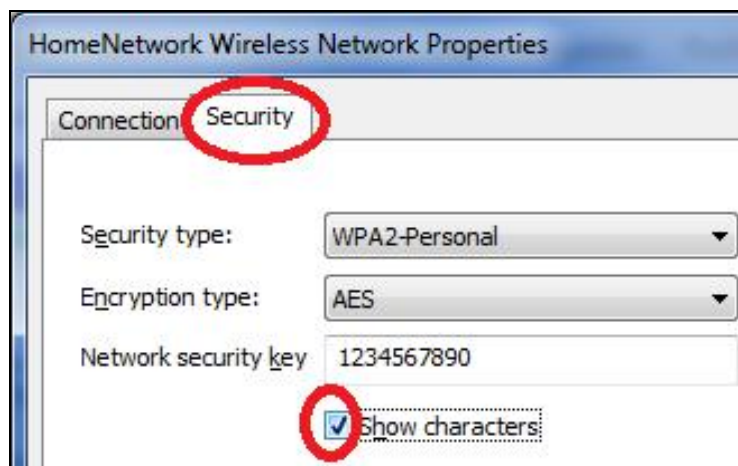
3. Click on “Manage wireless networks” in the left menu.



4. You should see the profile of your Wi-Fi network in the list. Right click on your Wi-Fi network and then click on “Properties”.

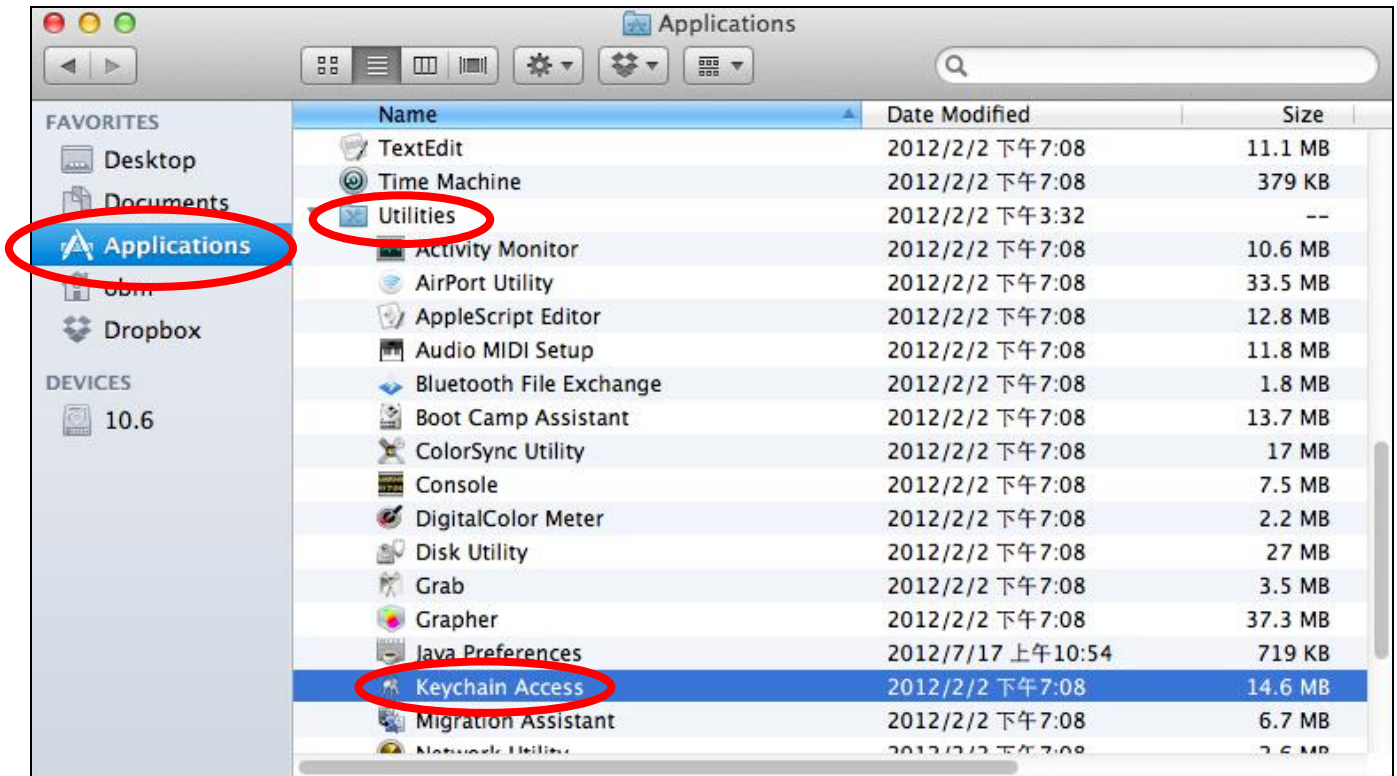


5. Click on the “Security” tab, and then check the box labeled “Show characters”. This will show your network security key. Click the “Cancel” button to close the window.



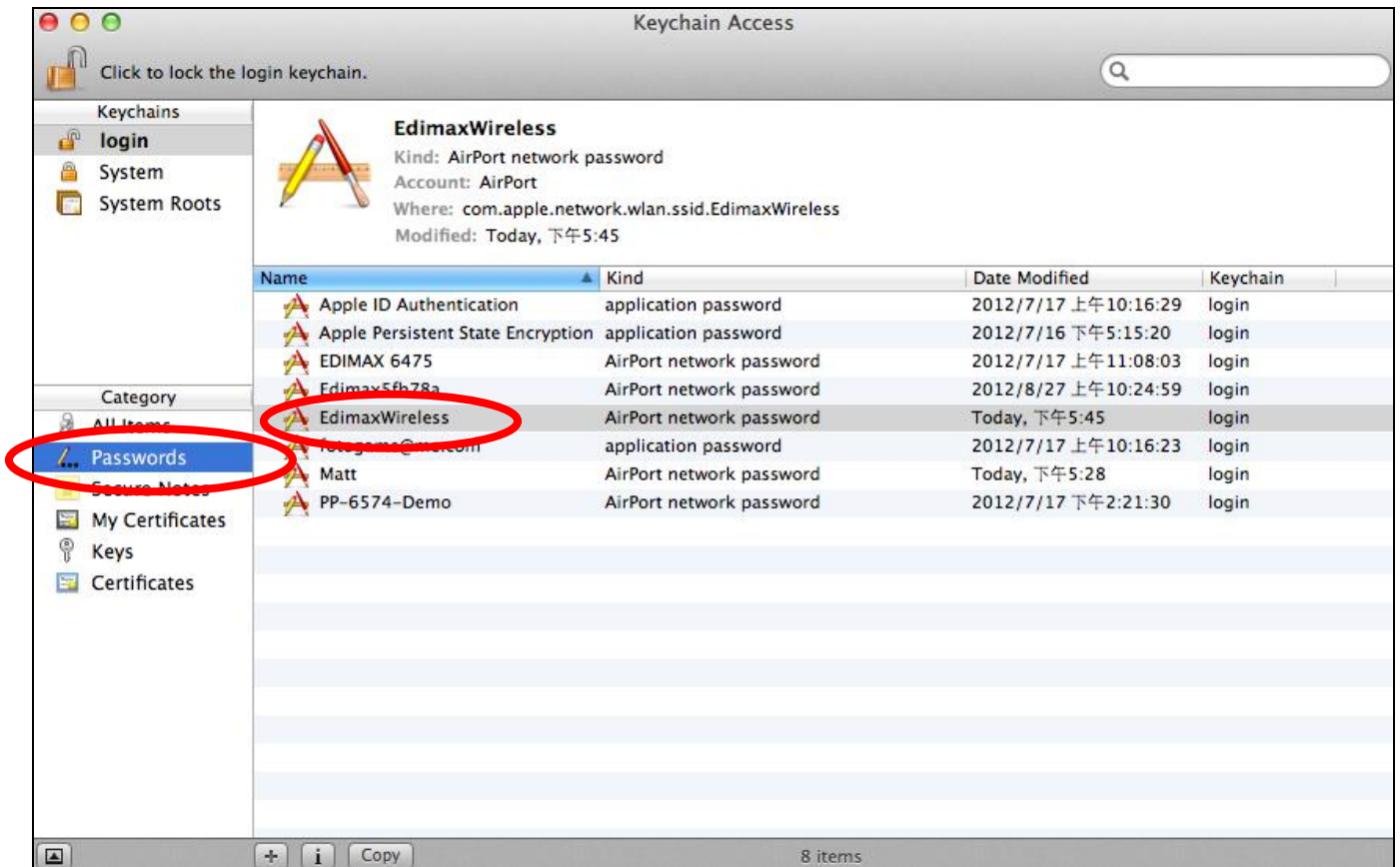
## V-1-3-2. Mac

1. Open a new Finder window, and select “Applications” from the menu on the left side. Open the folder labeled “Utilities” and then open the application “Keychain Access”.



2. Select “Passwords” from the sub-menu labeled “Category” on the left side, as shown below. Then search the list in the main panel for the SSID of your network. In this example, the SSID is “EdimaxWireless” – though your SSID will be unique to your network.



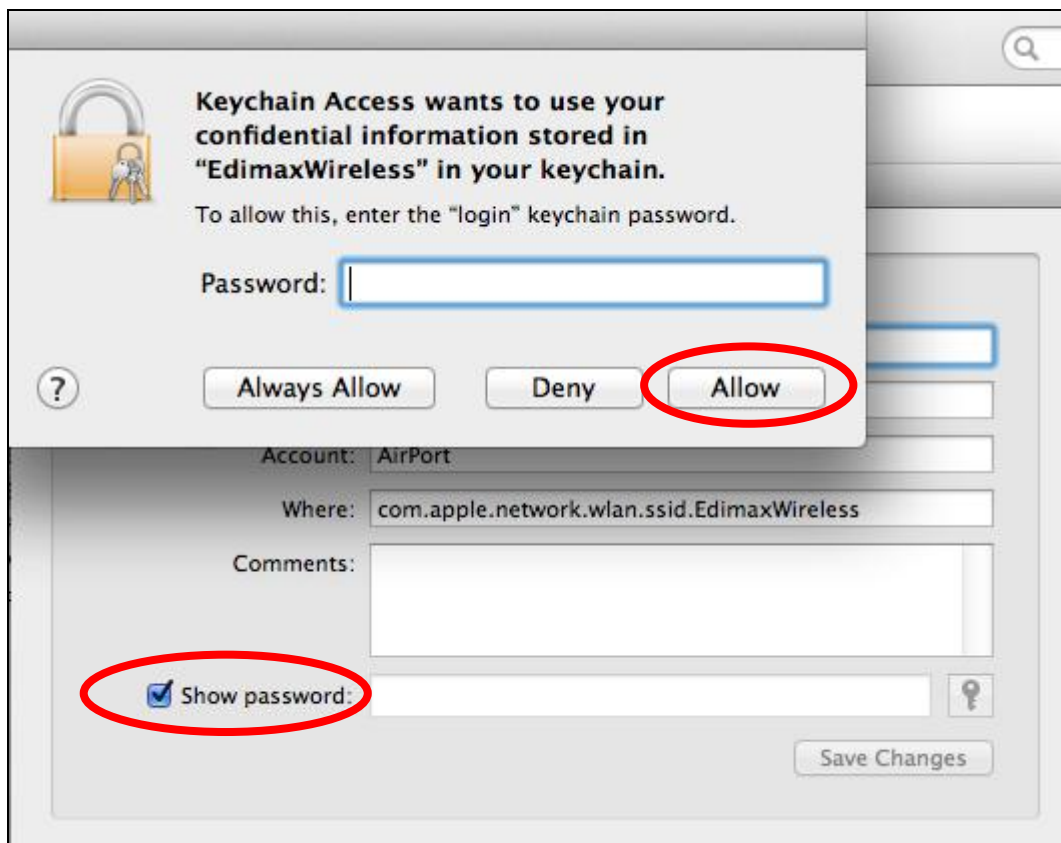


3. Double click the SSID of your network and you will see the following window.



4. Check the box labeled "Show password" and you will be asked to enter your administrative password, which you use to log into your Mac. Enter your password and click "Allow".





Your network security password will now be displayed in the field next to the box labeled "Show password". In the example below, the network security password is "edimax1234". Please make a note of your network security password.

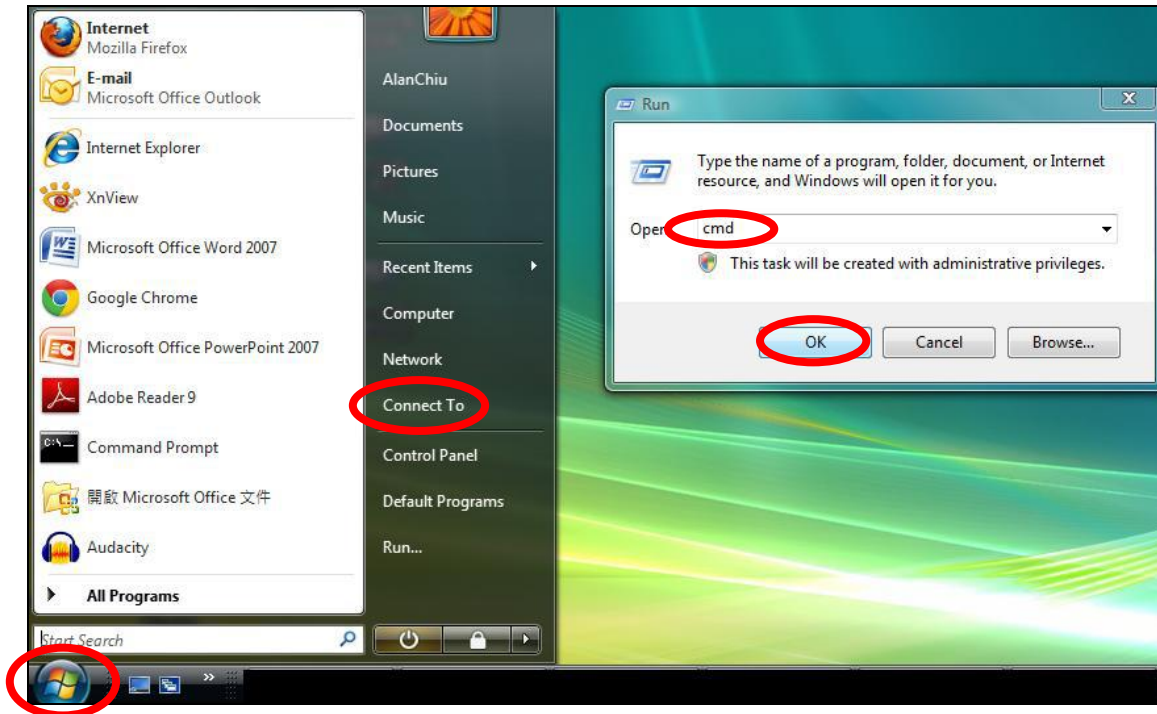


## V-1-4. How to Find Your Router's IP Address

To find your router's IP address, please follow the instructions appropriate for your operating system.

### V-1-4-1. Windows XP, Vista & 7

1. Go to "Start", select "Run" and type "cmd", then press Enter or click "OK".



2. A new window will open, type "ipconfig" and press Enter.

```
Administrator: C:\Windows\system32\cmd.exe
Microsoft Windows [Version 6.0.6002]
Copyright (c) 2006 Microsoft Corporation. All rights reserved.

C:\Users\AlanChiu>ipconfig
```

3. Your router's IP address will be displayed next to "Default Gateway".

```
Administrator: C:\Windows\system32\cmd.exe
Ethernet adapter 區域連線:

    Connection-specific DNS Suffix . . . :
    Link-local IPv6 Address . . . . . : fe80::4cdc:3e90:ba56:1722%9
    IPv4 Address. . . . . : 192.168.10.14
    Subnet Mask . . . . . : 255.255.255.0
    Default Gateway . . . . . : fe80::1867:2a1b:e9c2:e57b%9
                                192.168.10.254

Wireless LAN adapter 無線網路連線:

    Media State . . . . . : Media disconnected
    Connection-specific DNS Suffix . . : edimax.com

Tunnel adapter 區域連線* 6:

    Media State . . . . . : Media disconnected
    Connection-specific DNS Suffix . . :

Tunnel adapter 區域連線* 7:

    Media State . . . . . : Media disconnected
    Connection-specific DNS Suffix . . :

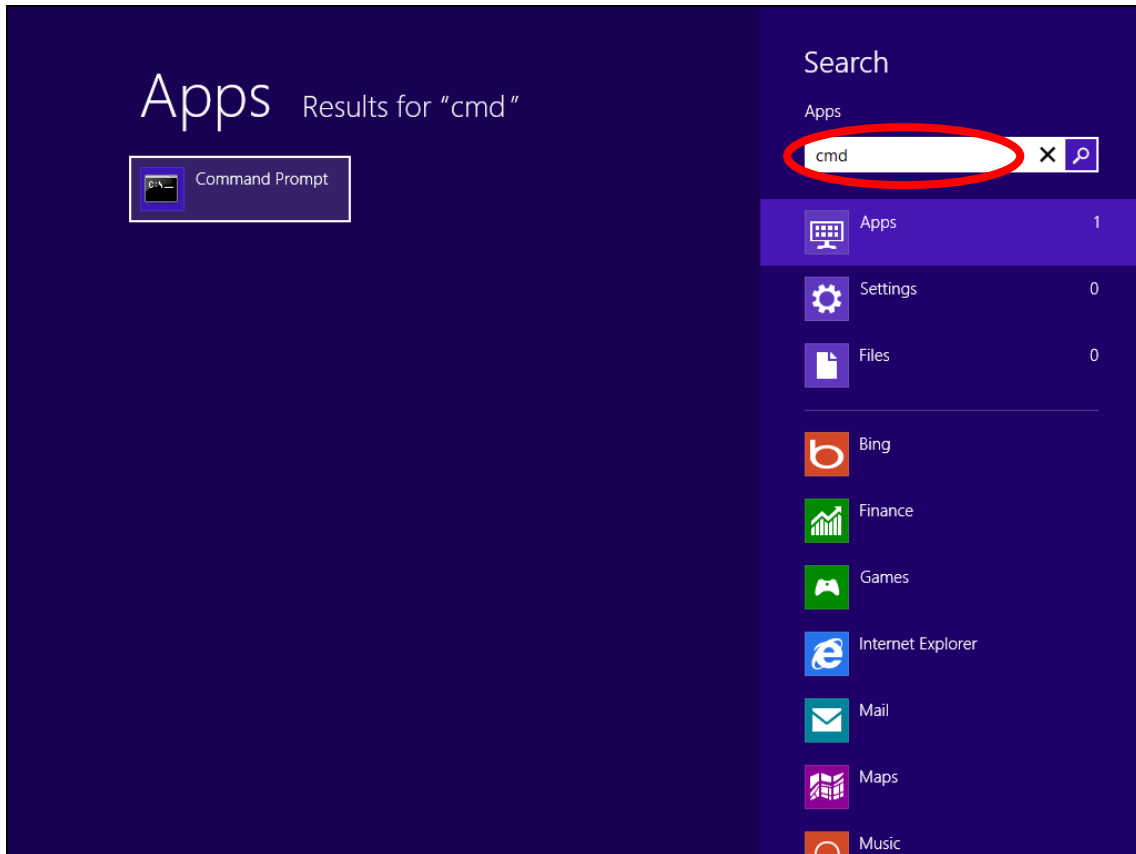
C:\Users\AlanChiu>
```

## V-1-4-2. Windows 8

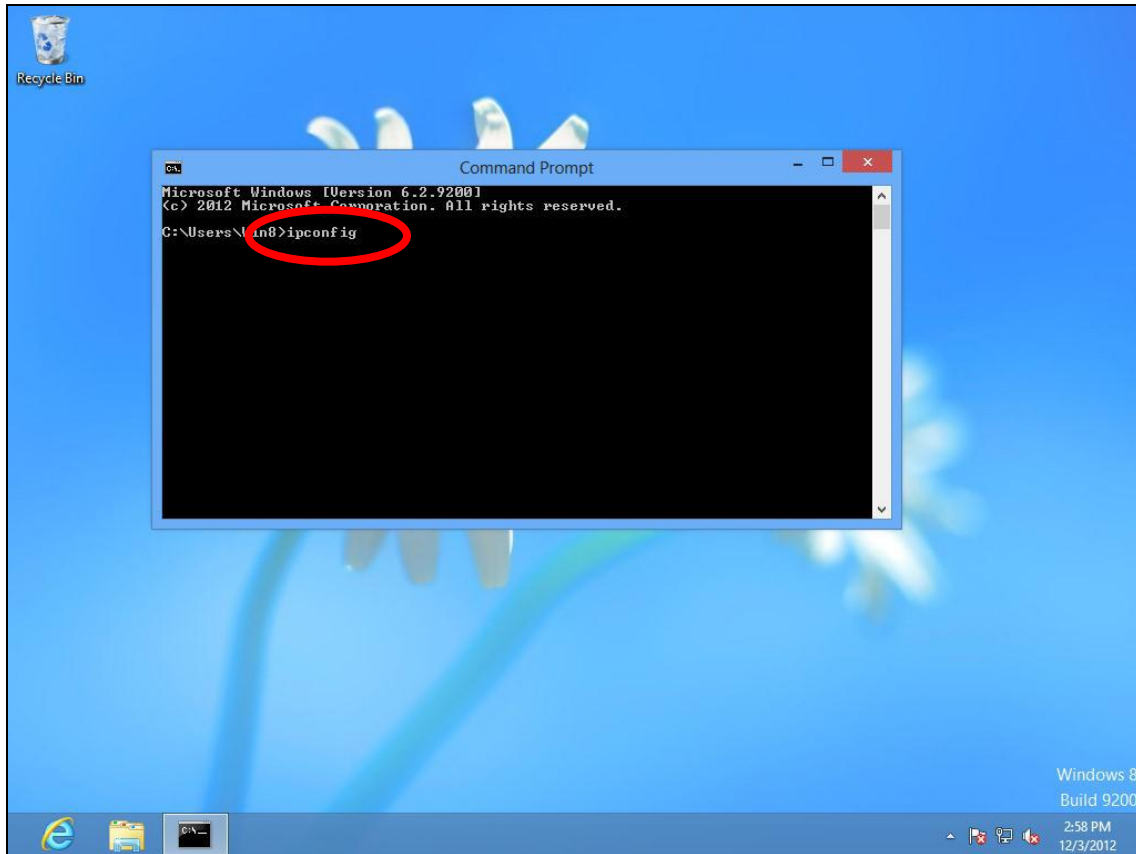
1. From the Windows 8 Start screen, move your cursor to the top right corner of the screen to display the Charms bar.



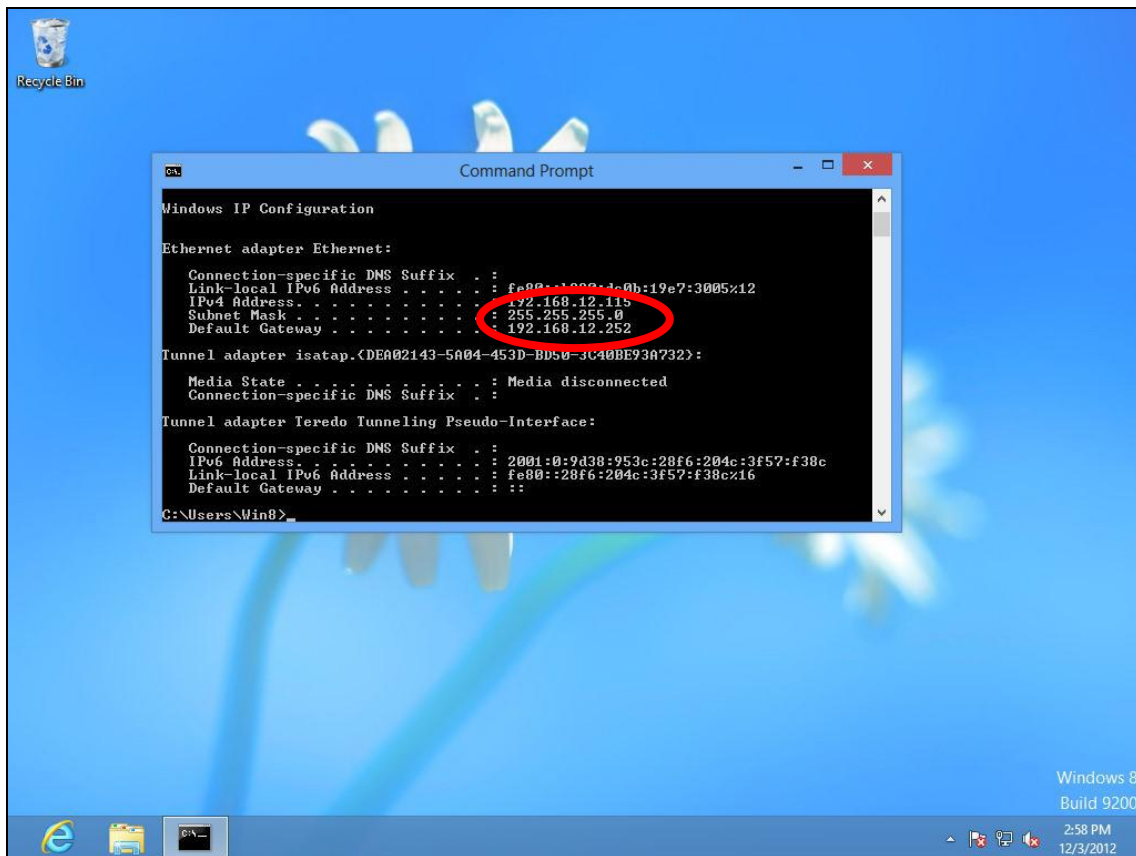
2. Click "Search" and enter "cmd" into the search bar. Click the "Command Prompt" app which be displayed on the left side.



**3.** A new window will open, type "ipconfig" and press Enter.

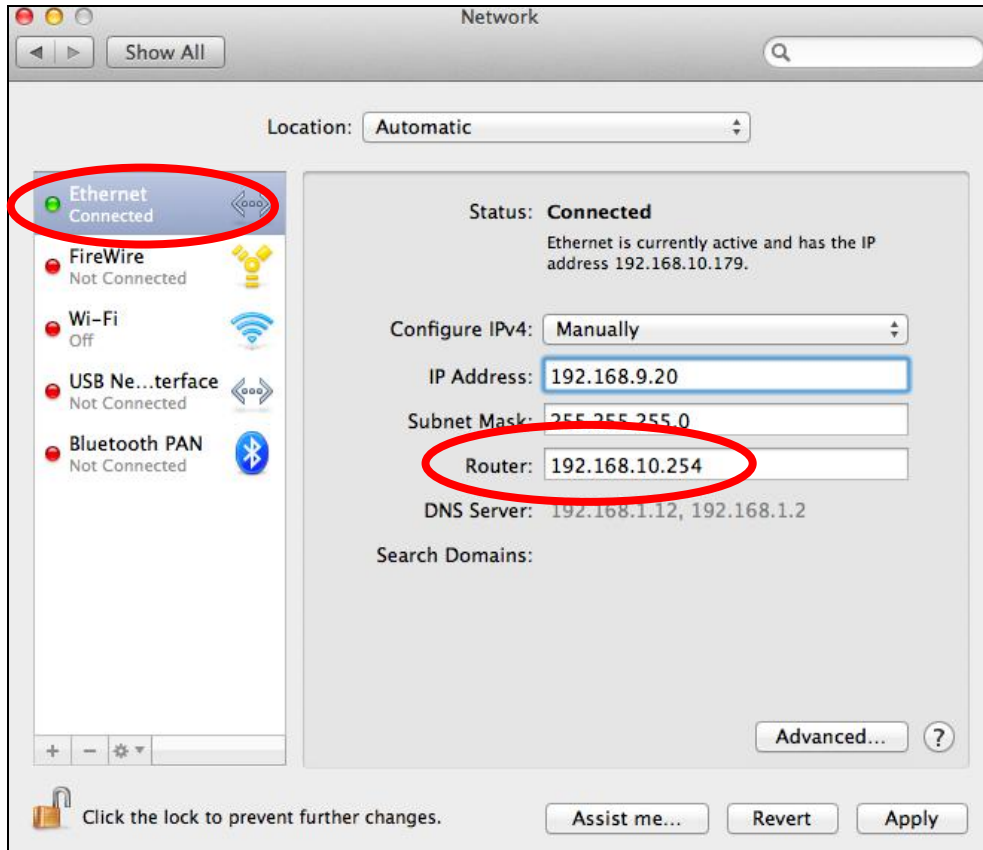


#### 4. Your router's IP address will be displayed next to "Default Gateway".



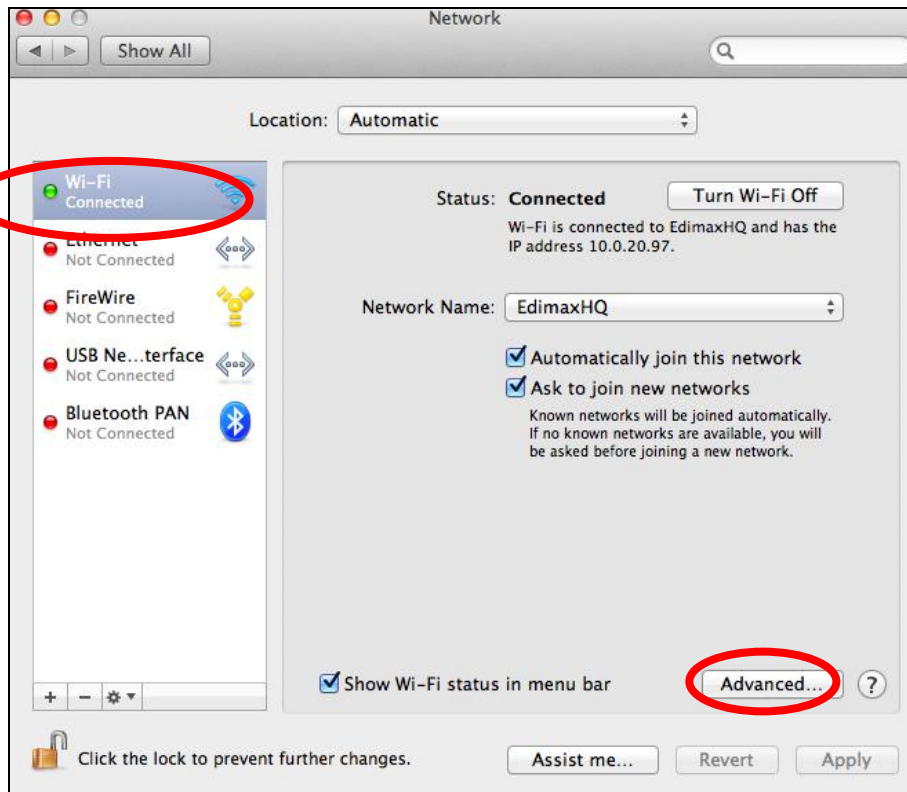
### V-1-4-3. Mac

1. Launch “System Preferences” and click on “Network”.
2. If you are using an Ethernet cable to connect to your network, your router’s IP address will be displayed next to “Router”.

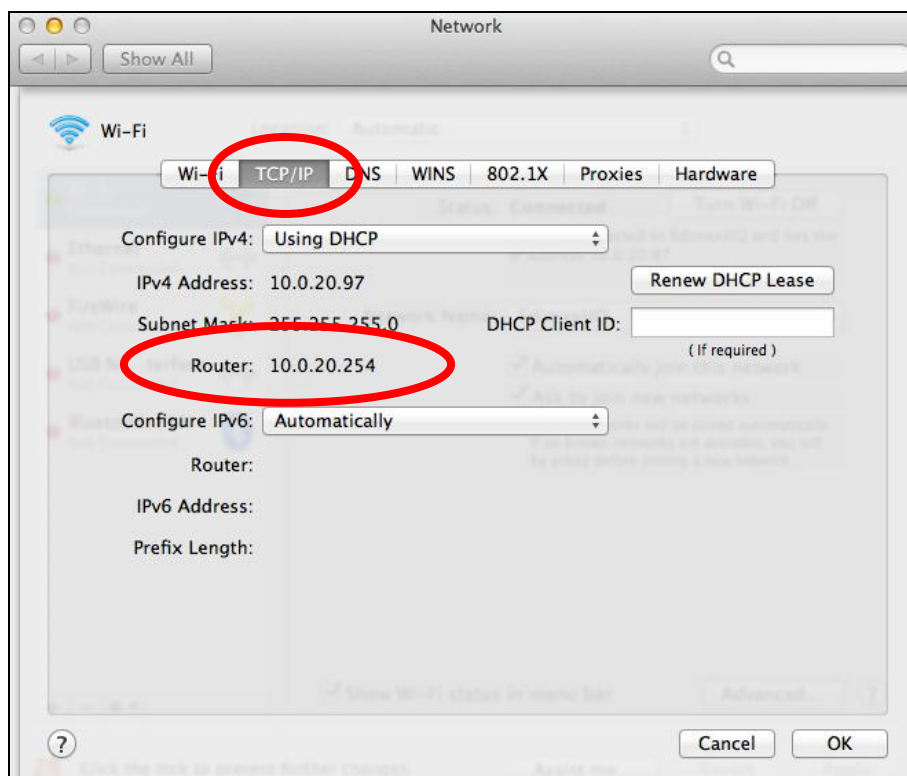


3. If you are using Wi-Fi, click “Wi-Fi” in the left panel, and then “Advanced” in the bottom right corner.






4. Click the “TCP/IP” tab and your router’s IP address will be displayed next to “Router”.






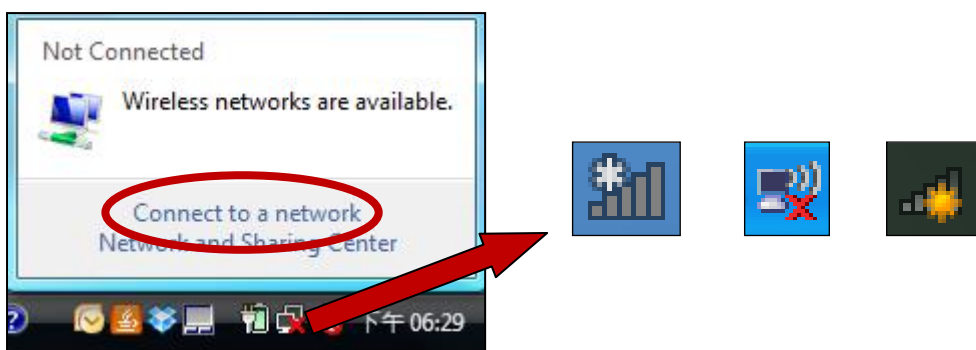


## V-2. Connecting to a Wi-Fi network

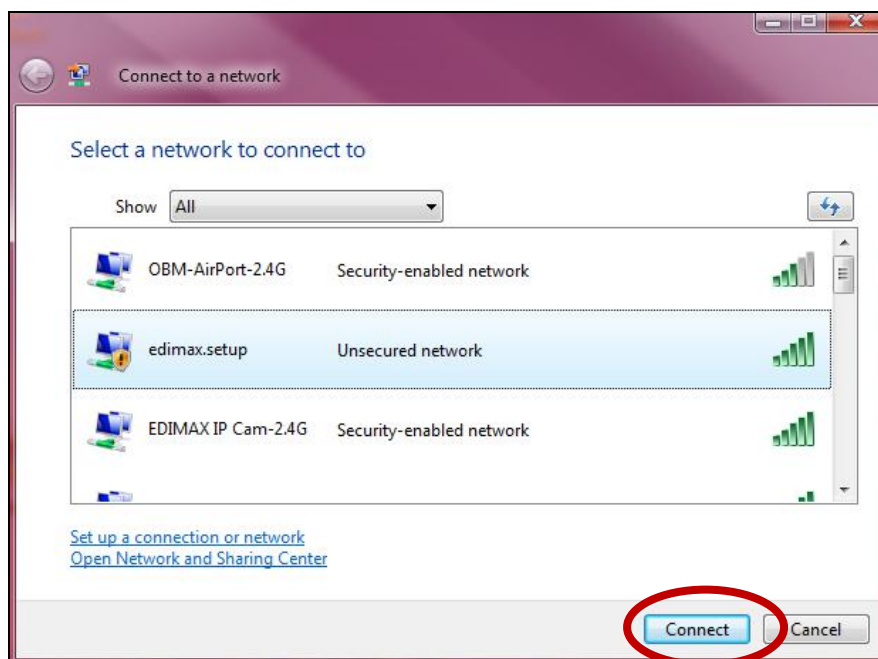
For help connecting to your device's **EdimaxEXT.Setup** SSID for initial setup, or to connect to your device's new Wi-Fi network (SSID) after setup is complete, follow the guide below:

 ***Below is an example of how to connect using Windows Vista – the process may vary slightly for other versions of Windows.***

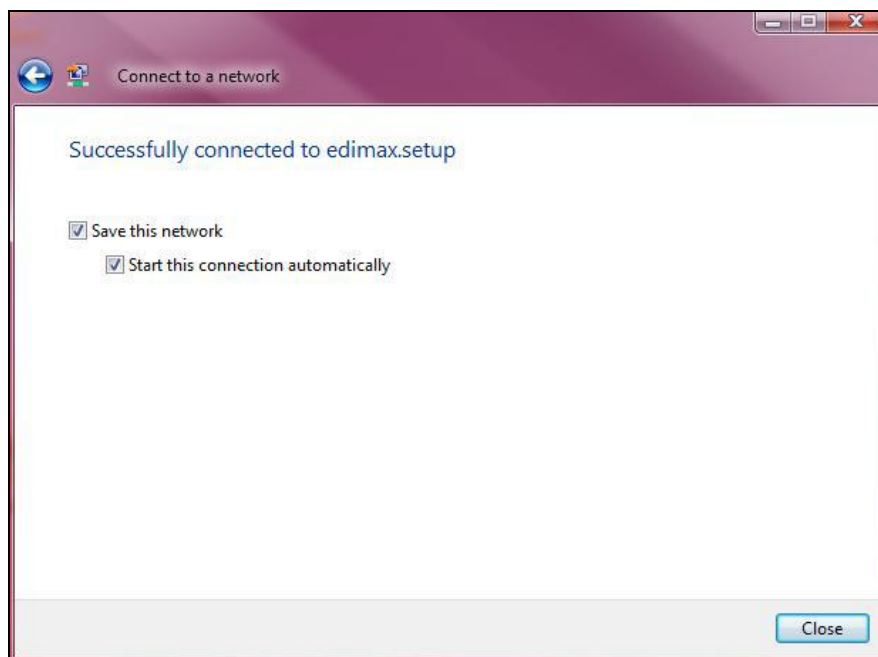
1. Click the network icon (, , or ) in the system tray and select “Connect to a network”.



2. Search for the SSID of your EW-7438RPn Air and then click “Connect”. If you set a password for your network, you will then be prompted to enter it.



3. After correctly entering your password, you will be successfully connected to the EW-7438RPn Air's wireless network.



## V-3. Glossary

**Default Gateway (Wireless bridge):** Every non-access point IP device needs to configure a default gateway's IP address. When the device sends out an IP packet, if the destination is not on the same network, the device has to send the packet to its default gateway, which will then send it out towards the destination.

**DHCP:** Dynamic Host Configuration Protocol. This protocol automatically gives every computer on your home network an IP address.

**DNS Server IP Address:** DNS stands for Domain Name System, which allows Internet servers to have a domain name (such as `www.Broadbandaccesspoint.com`) and one or more IP addresses (such as `192.34.45.8`). A DNS server keeps a database of Internet servers and their respective domain names and IP addresses, so that when a domain name is requested (as in typing "`Broadbandaccesspoint.com`" into your Internet browser), the user is sent to the proper IP address. The DNS server IP address used by the computers on your home network is the location of the DNS server your ISP has assigned to you.

**DSL Modem:** DSL stands for Digital Subscriber Line. A DSL modem uses your existing phone lines to transmit data at high speeds.

**Ethernet:** A standard for computer networks. Ethernet networks are connected by special cables and hubs, and move data around at up to 10/100 million bits per second (Mbps).

**IP Address and Network (Subnet) Mask:** IP stands for Internet Protocol. An IP address consists of a series of four numbers separated by periods, that identifies a single, unique Internet computer host in an IP network. Example: `192.168.2.1`. It consists of 2 portions: the IP network address, and the host identifier.

The IP address is a 32-bit binary pattern, which can be represented as four cascaded decimal numbers separated by ".": `aaa.aaa.aaa.aaa`, where each "aaa" can be anything from 000 to 255, or as four cascaded binary numbers separated by ".": `bbbbbbbbb.bbbbbbbb.bbbbbbbb.bbbbbbbb`, where each "b" can either be 0 or 1.

A network mask is also a 32-bit binary pattern, and consists of consecutive leading 1's followed by consecutive trailing 0's, such as 11111111.11111111.11111111.00000000. Therefore sometimes a network mask can also be described simply as "x" number of leading 1's. When both are represented side by side in their binary forms, all bits in the IP address that correspond to 1's in the network mask become part of the IP network address, and the remaining bits correspond to the host ID.

For example, if the IP address for a device is, in its binary form, 11011001.10110000.10010000.00000111, and if its network mask is, 11111111.11111111.11110000.00000000 It means the device's network address is 11011001.10110000.10010000.00000000, and its host ID is, 00000000.00000000.00000000.00000111. This is a convenient and efficient method for access points to route IP packets to their destination.

**ISP Gateway Address:** (see ISP for definition). The ISP Gateway Address is an IP address for the Internet access point located at the ISP's office.

**ISP:** Internet Service Provider. An ISP is a business that provides connectivity to the Internet for individuals and other businesses or organizations.

**LAN:** Local Area Network. A LAN is a group of computers and devices connected together in a relatively small area (such as a house or an office). Your home network is considered a LAN.

**MAC Address:** MAC stands for Media Access Control. A MAC address is the hardware address of a device connected to a network. The MAC address is a unique identifier for a device with an Ethernet interface. It is comprised of two parts: 3 bytes of data that corresponds to the Manufacturer ID (unique for each manufacturer), plus 3 bytes that are often used as the product's serial number.

**NAT:** Network Address Translation. This process allows all of the computers on your home network to use one IP address. Using the broadband access point's NAT capability, you can access the Internet from any computer on your home network without having to purchase more IP addresses from your ISP.

**Port:** Network Clients (LAN PC) uses port numbers to distinguish one network application/protocol over another. Below is a list of common applications and protocol/port numbers:

Application	Protocol	Port Number
Telnet	TCP	23
FTP	TCP	21
SMTP	TCP	25
POP3	TCP	110
H.323	TCP	1720
SNMP	UCP	161
SNMP Trap	UDP	162
HTTP	TCP	80
PPTP	TCP	1723
PC Anywhere	TCP	5631
PC Anywhere	UDP	5632

**Access point:** A access point is an intelligent network device that forwards packets between different networks based on network layer address information such as IP addresses.

**Subnet Mask:** A subnet mask, which may be a part of the TCP/IP information provided by your ISP, is a set of four numbers (e.g. 255.255.255.0) configured like an IP address. It is used to create IP address numbers used only within a particular network (as opposed to valid IP address numbers recognized by the Internet, which must be assigned by InterNIC).

**TCP/IP, UDP:** Transmission Control Protocol/Internet Protocol (TCP/IP) and Unreliable Datagram Protocol (UDP). TCP/IP is the standard protocol for data transmission over the Internet. Both TCP and UDP are transport layer protocol. TCP performs proper error detection and error recovery, and thus is reliable. UDP on the other hand is not reliable. They both run on top of the IP (Internet Protocol), a network layer protocol.

**WAN:** Wide Area Network. A network that connects computers located in geographically separate areas (e.g. different buildings, cities, countries). The Internet is a wide area network.

**Web-based management Graphical User Interface (GUI):** Many devices support a graphical user interface that is based on the web browser. This means the user can use the familiar Netscape or Microsoft Internet Explorer to Control/configure or monitor the device being managed.

## COPYRIGHT

Copyright © Edimax Technology Co., Ltd. all rights reserved. No part of this publication may be reproduced, transmitted, transcribed, stored in a retrieval system, or translated into any language or computer language, in any form or by any means, electronic, mechanical, magnetic, optical, chemical, manual or otherwise, without the prior written permission from Edimax Technology Co., Ltd.

Edimax Technology Co., Ltd. makes no representations or warranties, either expressed or implied, with respect to the contents hereof and specifically disclaims any warranties, merchantability, or fitness for any particular purpose. Any software described in this manual is sold or licensed as is. Should the programs prove defective following their purchase, the buyer (and not this company, its distributor, or its dealer) assumes the entire cost of all necessary servicing, repair, and any incidental or consequential damages resulting from any defect in the software. Edimax Technology Co., Ltd. reserves the right to revise this publication and to make changes from time to time in the contents hereof without the obligation to notify any person of such revision or changes.

The product you have purchased and the setup screen may appear slightly different from those shown in this QIG. The software and specifications are subject to change without notice. Please visit our website [www.edimax.com](http://www.edimax.com) for updates. All brand and product names mentioned in this manual are trademarks and/or registered trademarks of their respective holders.

## Federal Communication Commission Interference Statement

This equipment has been tested and found to comply with the limits for a Class B digital device, pursuant to Part 15 of FCC Rules. These limits are designed to provide reasonable protection against harmful interference in a residential installation. This equipment generates, uses, and can radiate radio frequency energy and, if not installed and used in accordance with the instructions, may cause harmful interference to radio communications. However, there is no guarantee that interference will not occur in a particular installation. If this equipment does cause harmful interference to radio or television reception, which can be determined by turning the equipment off and on, the user is encouraged to try to correct the interference by one or more of the following measures:

1. Reorient or relocate the receiving antenna.
2. Increase the separation between the equipment and receiver.
3. Connect the equipment into an outlet on a circuit different from that to which the receiver is connected.
4. Consult the dealer or an experienced radio technician for help.

### FCC Caution

Any changes or modifications not expressly approved by the party responsible for compliance could void the authority to operate equipment.

This device complies with Part 15 of the FCC Rules. Operation is subject to the following two conditions: (1) this device may not cause harmful interference, and (2) this device must accept any interference received, including interference that may cause undesired operation.

### FCC Radiation Exposure Statement:

This equipment complies with FCC radiation exposure limits set forth for an uncontrolled environment. This equipment should be installed and operated with minimum distance 20cm between the radiator & your body. For product available in the USA/Canada market, only channel 1~11 can be operated. Selection of other channels is not possible. This device and its antenna(s) must not be co-located or operating in conjunction with any other antenna or transmitter.

### R&TTE Compliance Statement

This equipment complies with all the requirements of DIRECTIVE 1999/5/EC OF THE EUROPEAN PARLIAMENT AND THE COUNCIL of March 9, 1999 on radio equipment and telecommunication terminal equipment and the mutual recognition of their conformity (R&TTE). The R&TTE Directive repeals and replaces in the directive 98/13/EEC (Telecommunications Terminal Equipment and Satellite Earth Station Equipment) As of April 8, 2000.

### Safety

This equipment is designed with the utmost care for the safety of those who install and use it. However, special attention must be paid to the dangers of electric shock and static electricity when working with electrical equipment. All guidelines of this and of the computer manufacture must therefore be allowed at all times to ensure the safe use of the equipment.

### EU Countries Intended for Use

The ETSI version of this device is intended for home and office use in Austria, Belgium, Bulgaria, Cyprus, Czech, Denmark, Estonia, Finland, France, Germany, Greece, Hungary, Ireland, Italy, Latvia, Lithuania, Luxembourg, Malta, Netherlands, Poland, Portugal, Romania, Slovakia, Slovenia, Spain, Sweden, Turkey, and United Kingdom. The ETSI version of this device is also authorized for use in EFTA member states: Iceland, Liechtenstein, Norway, and Switzerland.

### EU Countries Not Intended for Use

None

## EU Declaration of Conformity

- English:** This equipment is in compliance with the essential requirements and other relevant provisions of Directive 1995/95/EC, 2011/65/EC.
- Français:** Cet équipement est conforme aux exigences essentielles et autres dispositions de la directive 1995/95/CE, 2011/65/CE.
- Čeština:** Toto zařízení je v souladu se základními požadavky a ostatními příslušnými ustanoveními směrnic 1995/95/ES, 2011/65/ES.
- Polski:** Urządzenie jest zgodne z ogólnymi wymaganiami oraz szczególnymi warunkami określonymi Dyrektywą UE 1995/95/EC, 2011/65/EC..
- Română:** Acest echipament este în conformitate cu cerințele esențiale și alte prevederi relevante ale Directivei 1995/95/CE, 2011/65/CE.
- Русский:** Это оборудование соответствует основным требованиям и положениям Директивы 1995/95/EC, 2011/65/EC.
- Magyar:** Ez a berendezés megfelel az alapvető követelményeknek és más vonatkozó irányelveknek (1995/95/EK, 2011/65/EK).
- Türkçe:** Bu cihaz 1995/95/EC, 2011/65/EC direktifleri zorunlu istekler ve diğer hükümlerle ile uyumludur.
- Українська:** Обладнання відповідає вимогам і умовам директиви 1995/95/EC, 2011/65/EC.
- Slovenčina:** Toto zariadenie spĺňa základné požiadavky a ďalšie príslušné ustanovenia smerníc 1995/95/ES, 2011/65/ES.
- Deutsch:** Dieses Gerät erfüllt die Voraussetzungen gemäß den Richtlinien 1995/95/EC, 2011/65/EC.
- Español:** El presente equipo cumple los requisitos esenciales de la Directiva 1995/95/EC, 2011/65/EC.
- Italiano:** Questo apparecchio è conforme ai requisiti essenziali e alle altre disposizioni applicabili della Direttiva 1995/95/CE, 2011/65/CE.
- Nederlands:** Dit apparaat voldoet aan de essentiële eisen en andere van toepassing zijnde bepalingen van richtlijn 1995/95/EC, 2011/65/EC..
- Português:** Este equipamento cumpre os requisitos essenciais da Directiva 1995/95/EC, 2011/65/EC.
- Norsk:** Dette utstyret er i samsvar med de viktigste kravene og andre relevante regler i Direktiv 1995/95/EC, 2011/65/EC.
- Svenska:** Denna utrustning är i överensstämmelse med de väsentliga kraven och övriga relevanta bestämmelser i direktiv 1995/95/EG, 2011/65/EG.
- Dansk:** Dette udstyr er i overensstemmelse med de væsentligste krav og andre relevante forordninger i direktiv 1995/95/EC, 2011/65/EC.
- suomen kieli:** Tämä laite täyttää direktiivien 1995/95/EY, 2011/65/EY oleelliset vaatimukset ja muut asiaankuuluvat määräykset.

FOR USE IN

AT	BE	CY	CZ	DK	EE	FI	FR
DE	GR	HU	IE	IT	LV	LT	LU
MT	NL	PL	PT	SK	SJ	ES	SE
GB	IS	LI	NO	CH	BG	RO	TR



---

### WEEE Directive & Product Disposal



At the end of its serviceable life, this product should not be treated as household or general waste. It should be handed over to the applicable collection point for the recycling of electrical and electronic equipment, or returned to the supplier for disposal.



## Declaration of Conformity

We, Edimax Technology Co., Ltd., declare under our sole responsibility, that the equipment described below complies with the requirements of the European R&TTE directive 1999/95/EC, and directive 2011/65/EC(RoHS) .

**Equipment:** N300 Smart Wi-Fi Extender  
**Model No.:** EW-7438RPn Air

The following European standards for essential requirements have been followed:

**Spectrum:** ETSI EN 300 328 V1.8.1 (2012-06)  
**EMC:** EN 301 489-1 V1.9.2 (2011-09);  
EN 301 489-17 V2.2.1 (2012-09)  
**EMF:** EN 62311:2008  
**Safety (LVD):** IEC 60950-1:2005 (2nd Edition);Am1:2009  
EN-60950-1:2006+A11:2009+A1:2010+A12:2011

Edimax Technology Europe B.V.  
Nijverheidsweg 25,  
5683 CJ BEST  
THE NETHERLANDS

a company of :  
Edimax Technology Co., Ltd.,  
No. 3, Wu Chuan 3<sup>rd</sup> Road,  
Wu-Ku Industrial Park,  
New Taipei City, Taiwan

Signature:

Printed Name: Vivian Ma  
Title: Director  
Edimax Technology Europe B.V.



Date of Signature: March 30, 2014

Signature:

A handwritten signature in black ink, appearing to read 'Albert Chang', written over a white background.

Printed Name: Albert Chang

Title: Director

Edimax Technology Co., Ltd.

## Notice According to GNU General Public License Version 2

This product includes software that is subject to the GNU General Public License version 2. The program is free software and distributed without any warranty of the author. We offer, valid for at least three years, to give you, for a charge no more than the costs of physically performing source distribution, a complete machine-readable copy of the corresponding source code.

Das Produkt beinhaltet Software, die den Bedingungen der GNU/GPL-Version 2 unterliegt. Das Programm ist eine sog. „Free Software“, der Autor stellt das Programm ohne irgendeine Gewährleistungen zur Verfügung. Wir bieten Ihnen für einen Zeitraum von drei Jahren an, eine vollständige maschinenlesbare Kopie des Quelltextes der Programme zur Verfügung zu stellen – zu nicht höheren Kosten als denen, die durch den physikalischen Kopiervorgang anfallen.

### GNU GENERAL PUBLIC LICENSE Version 2, June 1991

Copyright (C) 1989, 1991 Free Software Foundation, Inc. 51 Franklin Street, Fifth Floor, Boston, MA 02110-1301, USA  
Everyone is permitted to copy and distribute verbatim copies of this license document, but changing it is not allowed.

#### Preamble

The licenses for most software are designed to take away your freedom to share and change it. By contrast, the GNU General Public License is intended to guarantee your freedom to share and change free software--to make sure the software is free for all its users. This General Public License applies to most of the Free Software Foundation's software and to any other program whose authors commit to using it. (Some other Free Software Foundation software is covered by the GNU Lesser General Public License instead.) You can apply it to your programs, too.

When we speak of free software, we are referring to freedom, not price. Our General Public Licenses are designed to make sure that you have the freedom to distribute copies of free software (and charge for this service if you wish), that you receive source code or can get it if you want it, that you can change the software or use pieces of it in new free programs; and that you know you can do these things.

To protect your rights, we need to make restrictions that forbid anyone to deny you these rights or to ask you to surrender the rights. These restrictions translate to certain responsibilities for you if you distribute copies of the software, or if you modify it.

For example, if you distribute copies of such a program, whether gratis or for a fee, you must give the recipients all the rights that you have. You must make sure that they, too, receive or can get the source code. And you must show them these terms so they know their rights.

We protect your rights with two steps: (1) copyright the software, and (2) offer you this license which gives you legal permission to copy, distribute and/or modify the software.

Also, for each author's protection and ours, we want to make certain that everyone understands that there is no warranty for this free software. If the software is modified by someone else and passed on, we want its recipients to know that what they have is not the original, so that any problems introduced by others will not reflect on the original authors' reputations.

Finally, any free program is threatened constantly by software patents. We wish to avoid the danger that redistributors of a free program will individually obtain patent licenses, in effect making the program proprietary. To prevent this, we have made it clear that any patent must be licensed for everyone's free use or not licensed at all.

The precise terms and conditions for copying, distribution and modification follow.

#### TERMS AND CONDITIONS FOR COPYING, DISTRIBUTION AND MODIFICATION

0. This License applies to any program or other work which contains a notice placed by the copyright holder saying it may be distributed under the terms of this General Public License. The "Program", below, refers to any such program or work, and a "work based on the Program" means either the Program or any derivative work under copyright law: that is to say, a work containing the Program or a portion of it, either verbatim or with modifications and/or translated into another language. (Hereinafter, translation is included without limitation in the term "modification".) Each licensee is addressed as "you".

Activities other than copying, distribution and modification are not covered by this License; they are outside its scope. The act of running the Program is not restricted, and the output from the Program is covered only if its contents constitute a work based on the Program (independent of having been made by running the Program). Whether that is true depends on what the Program does.

1. You may copy and distribute verbatim copies of the Program's source code as you receive it, in any medium, provided that you conspicuously and appropriately publish on each copy an appropriate copyright notice and disclaimer of warranty; keep

intact all the notices that refer to this License and to the absence of any warranty; and give any other recipients of the Program a copy of this License along with the Program.

You may charge a fee for the physical act of transferring a copy, and you may at your option offer warranty protection in exchange for a fee.

2. You may modify your copy or copies of the Program or any portion of it, thus forming a work based on the Program, and copy and distribute such modifications or work under the terms of Section 1 above, provided that you also meet all of these conditions:

- a) You must cause the modified files to carry prominent notices stating that you changed the files and the date of any change.
- b) You must cause any work that you distribute or publish, that in whole or in part contains or is derived from the Program or any part thereof, to be licensed as a whole at no charge to all third parties under the terms of this License.
- c) If the modified program normally reads commands interactively when run, you must cause it, when started running for such interactive use in the most ordinary way, to print or display an announcement including an appropriate copyright notice and a notice that there is no warranty (or else, saying that you provide a warranty) and that users may redistribute the program under these conditions, and telling the user how to view a copy of this License. (Exception: if the Program itself is interactive but does not normally print such an announcement, your work based on the Program is not required to print an announcement.)

These requirements apply to the modified work as a whole. If identifiable sections of that work are not derived from the Program, and can be reasonably considered independent and separate works in themselves, then this License, and its terms, do not apply to those sections when you distribute them as separate works. But when you distribute the same sections as part of a whole which is a work based on the Program, the distribution of the whole must be on the terms of this License, whose permissions for other licensees extend to the entire whole, and thus to each and every part regardless of who wrote it.

Thus, it is not the intent of this section to claim rights or contest your rights to work written entirely by you; rather, the intent is to exercise the right to control the distribution of derivative or collective works based on the Program.

In addition, mere aggregation of another work not based on the Program with the Program (or with a work based on the Program) on a volume of a storage or distribution medium does not bring the other work under the scope of this License.

3. You may copy and distribute the Program (or a work based on it, under Section 2) in object code or executable form under the terms of Sections 1 and 2 above provided that you also do one of the following:

- a) Accompany it with the complete corresponding machine-readable source code, which must be distributed under the terms of Sections 1 and 2 above on a medium customarily used for software interchange; or,
- b) Accompany it with a written offer, valid for at least three years, to give any third party, for a charge no more than your cost of physically performing source distribution, a complete machine-readable copy of the corresponding source code, to be distributed under the terms of Sections 1 and 2 above on a medium customarily used for software interchange; or,
- c) Accompany it with the information you received as to the offer to distribute corresponding source code. (This alternative is allowed only for noncommercial distribution and only if you received the program in object code or executable form with such an offer, in accord with Subsection b above.)

The source code for a work means the preferred form of the work for making modifications to it. For an executable work, complete source code means all the source code for all modules it contains, plus any associated interface definition files, plus the scripts used to control compilation and installation of the executable. However, as a special exception, the source code distributed need not include anything that is normally distributed (in either source or binary form) with the major components (compiler, kernel, and so on) of the operating system on which the executable runs, unless that component itself accompanies the executable.

If distribution of executable or object code is made by offering access to copy from a designated place, then offering equivalent access to copy the source code from the same place counts as distribution of the source code, even though third parties are not compelled to copy the source along with the object code.

4. You may not copy, modify, sublicense, or distribute the Program except as expressly provided under this License. Any attempt otherwise to copy, modify, sublicense or distribute the Program is void, and will automatically terminate your rights under this License. However, parties who have received copies, or rights, from you under this License will not have their licenses terminated so long as such parties remain in full compliance.

5. You are not required to accept this License, since you have not signed it. However, nothing else grants you permission to modify or distribute the Program or its derivative works. These actions are prohibited by law if you do not accept this License. Therefore, by modifying or distributing the Program (or any work based on the Program), you indicate your acceptance of this License to do so, and all its terms and conditions for copying, distributing or modifying the Program or works based on it.

6. Each time you redistribute the Program (or any work based on the Program), the recipient automatically receives a license from the original licensor to copy, distribute or modify the Program subject to these terms and conditions. You may not impose any further restrictions on the recipients' exercise of the rights granted herein. You are not responsible for enforcing compliance by third parties to this License.

7. If, as a consequence of a court judgment or allegation of patent infringement or for any other reason (not limited to patent issues), conditions are imposed on you (whether by court order, agreement or otherwise) that contradict the conditions of this License, they do not excuse you from the conditions of this License. If you cannot distribute so as to satisfy simultaneously your obligations under this License and any other pertinent obligations, then as a consequence you may not distribute the Program at all. For example, if a patent license would not permit royalty-free redistribution of the Program by all those who receive copies directly or indirectly through you, then the only way you could satisfy both it and this License would be to refrain entirely from distribution of the Program.

If any portion of this section is held invalid or unenforceable under any particular circumstance, the balance of the section is intended to apply and the section as a whole is intended to apply in other circumstances.

It is not the purpose of this section to induce you to infringe any patents or other property right claims or to contest validity of any such claims; this section has the sole purpose of protecting the integrity of the free software distribution system, which is implemented by public license practices. Many people have made generous contributions to the wide range of software distributed through that system in reliance on consistent application of that system; it is up to the author/donor to decide if he or she is willing to distribute software through any other system and a licensee cannot impose that choice.

This section is intended to make thoroughly clear what is believed to be a consequence of the rest of this License.

8. If the distribution and/or use of the Program is restricted in certain countries either by patents or by copyrighted interfaces, the original copyright holder who places the Program under this License may add an explicit geographical distribution limitation excluding those countries, so that distribution is permitted only in or among countries not thus excluded. In such case, this License incorporates the limitation as if written in the body of this License.

9. The Free Software Foundation may publish revised and/or new versions of the General Public License from time to time. Such new versions will be similar in spirit to the present version, but may differ in detail to address new problems or concerns.

Each version is given a distinguishing version number. If the Program specifies a version number of this License which applies to it and "any later version", you have the option of following the terms and conditions either of that version or of any later version published by the Free Software Foundation. If the Program does not specify a version number of this License, you may choose any version ever published by the Free Software Foundation.

10. If you wish to incorporate parts of the Program into other free programs whose distribution conditions are different, write to the author to ask for permission. For software which is copyrighted by the Free Software Foundation, write to the Free Software Foundation; we sometimes make exceptions for this. Our decision will be guided by the two goals of preserving the free status of all derivatives of our free software and of promoting the sharing and reuse of software generally.

#### **NO WARRANTY**

11. BECAUSE THE PROGRAM IS LICENSED FREE OF CHARGE, THERE IS NO WARRANTY FOR THE PROGRAM, TO THE EXTENT PERMITTED BY APPLICABLE LAW. EXCEPT WHEN OTHERWISE STATED IN WRITING THE COPYRIGHT HOLDERS AND/OR OTHER PARTIES PROVIDE THE PROGRAM "AS IS" WITHOUT WARRANTY OF ANY KIND, EITHER EXPRESSED OR IMPLIED, INCLUDING, BUT NOT LIMITED TO, THE IMPLIED WARRANTIES OF MERCHANTABILITY AND FITNESS FOR A PARTICULAR PURPOSE. THE ENTIRE RISK AS TO THE QUALITY AND PERFORMANCE OF THE PROGRAM IS WITH YOU. SHOULD THE PROGRAM PROVE DEFECTIVE, YOU ASSUME THE COST OF ALL NECESSARY SERVICING, REPAIR OR CORRECTION.

12. IN NO EVENT UNLESS REQUIRED BY APPLICABLE LAW OR AGREED TO IN WRITING WILL ANY COPYRIGHT HOLDER, OR ANY OTHER PARTY WHO MAY MODIFY AND/OR REDISTRIBUTE THE PROGRAM AS PERMITTED ABOVE, BE LIABLE TO YOU FOR DAMAGES, INCLUDING ANY GENERAL, SPECIAL, INCIDENTAL OR CONSEQUENTIAL DAMAGES ARISING OUT OF THE USE OR INABILITY TO USE THE PROGRAM (INCLUDING BUT NOT LIMITED TO LOSS OF DATA OR DATA BEING RENDERED INACCURATE OR LOSSES SUSTAINED BY YOU OR THIRD PARTIES OR A FAILURE OF THE PROGRAM TO OPERATE WITH ANY OTHER PROGRAMS), EVEN IF SUCH HOLDER OR OTHER PARTY HAS BEEN ADVISED OF THE POSSIBILITY OF SUCH DAMAGES.