

Perfection V550 Photo User's Guide

Contents

Perfection V550 Photo User's Guide.....	7
Scanner Basics.....	8
Scanner Parts Locations	8
Scanner Parts.....	8
Scanner Buttons and Lights.....	12
Changing the Power Off Timer Setting	13
Placing Originals on the Scanner	15
Placing Originals on the Scanner Glass	15
Placing Film or Slides on the Scanner	17
Removing the Document Mat	17
Placing 35 mm Film Strips on the Scanner	19
Placing Medium Format Film on the Scanner	22
Placing 35 mm Slides on the Scanner	25
Replacing the Document Mat	26
Scanning	28
Starting a Scan.....	28
Starting a Scan from a Scanner Button.....	28
Changing Default Scan Button Settings.....	30
Starting a Scan Using the Epson Scan Icon	31
Starting a Scan from a Scanning Program.....	32
Selecting Epson Scan Settings	34
Scan Modes.....	35
Selecting the Scan Mode.....	35
Scanning in Full Auto Mode.....	36
Available Image Adjustments - Full Auto Mode.....	39
Scanning in Home Mode	39
Selecting a Scan Area - Home Mode	41
Available Image Adjustments - Home Mode	44
Scanning in Office Mode.....	45
Selecting a Scan Area - Office Mode	47

Available Image Adjustments - Office Mode	49
Scanning in Professional Mode	50
Available Image Types - Professional Mode	52
Available Image Adjustments - Professional Mode	53
Selecting a Scan Size - Professional Mode.....	55
Image Preview Guidelines.....	58
Scan Resolution Guidelines	58
Selecting Scan File Settings.....	59
Available Scanned File Types and Optional Settings.....	60
Scanning Special Projects.....	61
Scanning to Facebook and Other Destinations	62
Starting a Scan Using Easy Photo Scan	62
Uploading Scanned Images to Facebook	64
Uploading Scanned Images to Picasa	66
Uploading Scanned Images to Evernote.....	68
Uploading Scanned Images to SugarSync	70
Uploading Scanned Images to a Web Folder.....	71
Uploading Scanned Images to Email	73
Saving Scanned Images to a Folder	74
EPSON JPEG File Settings	75
EPSON TIFF and Multi-TIFF File Settings	75
Restoring Photo Colors as You Scan	76
Removing Dust and Scratch Marks Using DIGITAL ICE Technology	77
DIGITAL ICE Technology Specifications	78
Scanning to a PDF File	79
Scanning to a PDF File Using a Scanner Button	81
Available Image Adjustments - Scan to PDF Settings.....	86
Convert Scanned Documents to Editable Text (OCR).....	87
Scanning Using OCR - Windows	87
Scanning Using OCR - Mac OS X.....	89
Using the Scanner as a Copier - Copy Utility	91
Source Type Settings - Copy Utility.....	93
Scanning Directly to an Email.....	93

Cleaning and Transporting Your Scanner	95
Cleaning Your Scanner	95
Transporting Your Scanner	95
Solving Problems	97
Scanner Light Status	97
Solving Scanning Problems	98
Scanner Does Not Turn On or Turns Off Unexpectedly	99
Scanner Buttons Do Not Work as Expected	99
Scanning Software Does Not Operate Correctly	99
Cannot Start Epson Scan	100
Scanning is Slow	101
Solving Scanned Image Quality Problems	101
Image Consists of a Few Dots Only.....	102
Line of Dots Appears in All Scanned Images.....	102
Straight Lines in an Image Appear Crooked	102
Image is Distorted or Blurry	103
Image Colors are Patchy at the Edges	103
Image is Too Dark	103
Back of Original Image Appears in Scanned Image	103
Ripple Patterns Appear in an Image	104
Image is Scanned Upside-Down	104
Scanned Image Colors Do Not Match Original Colors	104
Characters are not Recognized During Conversion to Editable Text (OCR)	104
Scan Area is Not Adjustable in Thumbnail Preview	105
Scanned Image Edges are Cropped	105
Film or Slide Scanning Does Not Work.....	105
Negative Film Preview Image Looks Incorrect.....	106
Ring Pattern Appears in Scanned Film or Slides	106
When to Uninstall Your Scanner Software	106
Uninstalling Scanner Software - Windows.....	106
Uninstalling Scanner Software - Mac OS X	107
Where to Get Help.....	108

Technical Specifications	109
Windows System Requirements	109
Mac System Requirements	109
General Specifications	110
Dimension Specifications	111
Electrical Specifications	111
Environmental Specifications	112
USB Interface Specifications	112
Safety and Approvals Specifications	113
Notices	114
Important Safety Instructions	114
Restrictions on Copying	115
Default Delay Times for Power Management for Epson Products	116
Trademarks	116
Copyright Notice	117
libTIFF Software Acknowledgment	117
A Note Concerning Responsible Use of Copyrighted Materials	118
Copyright Attribution	118

Perfection V550 Photo User's Guide

Welcome to the Perfection V550 Photo *User's Guide*.

For a printable PDF copy of this guide, [click here](#).

Scanner Basics

See these sections to learn about the basic features of your scanner.

[Scanner Parts Locations](#)

[Changing the Power Off Timer Setting](#)

Scanner Parts Locations

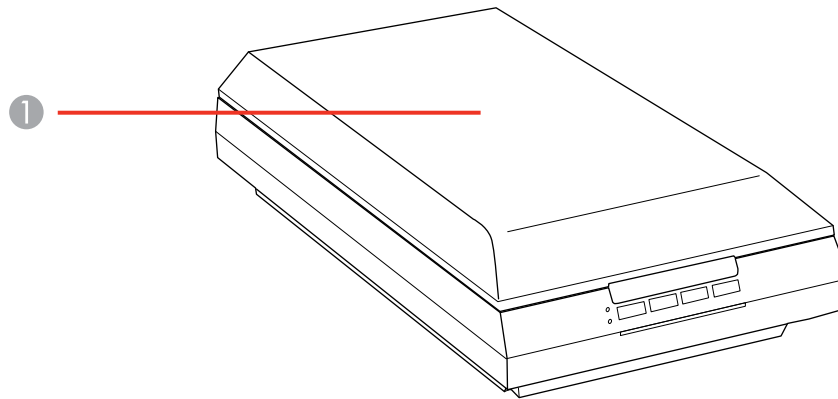
See these sections to identify the parts on your scanner.

[Scanner Parts](#)

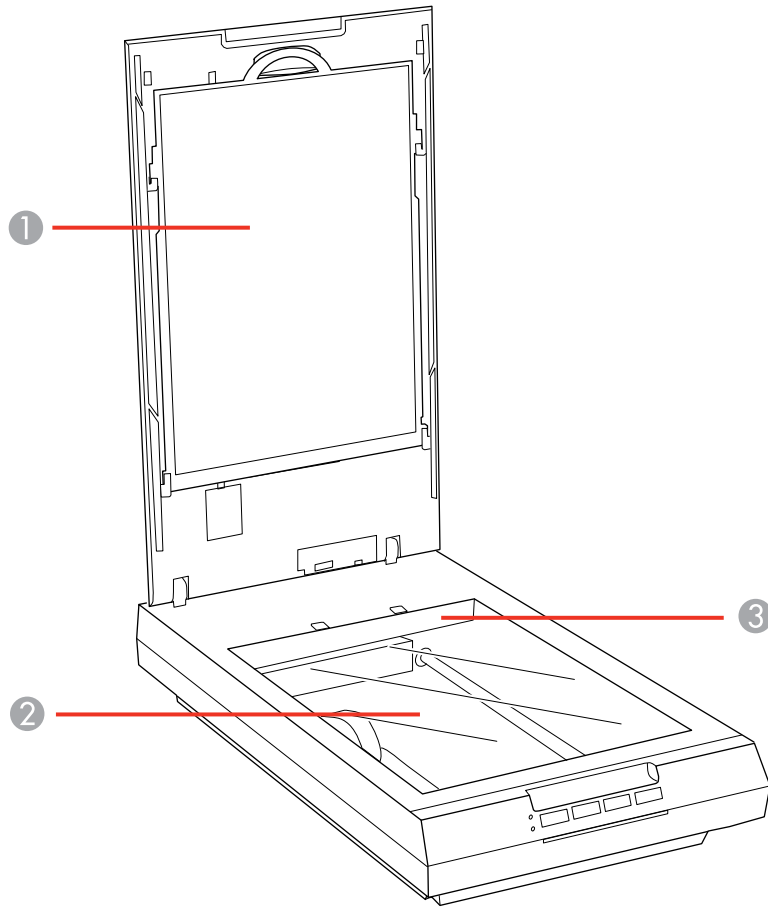
[Scanner Buttons and Lights](#)

Parent topic: [Scanner Basics](#)

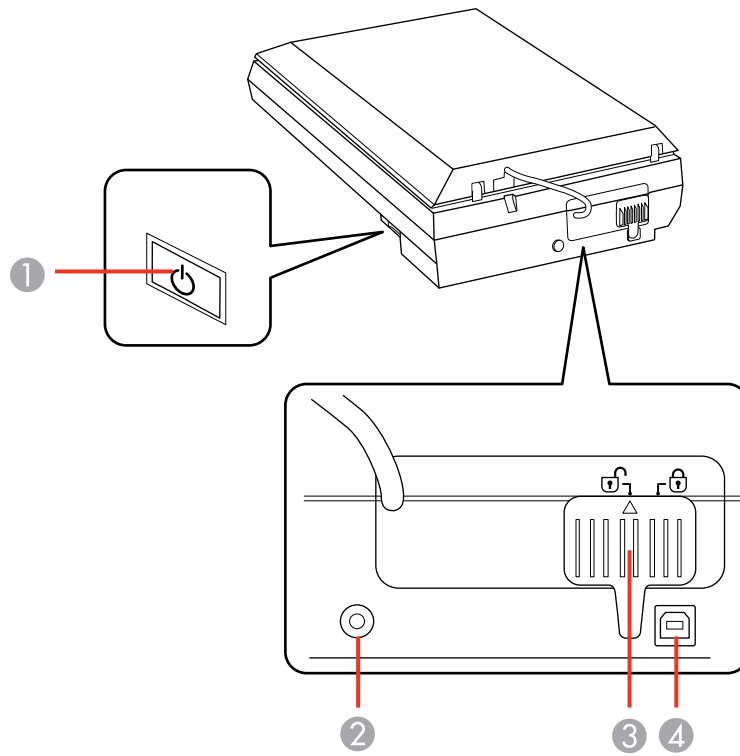
Scanner Parts




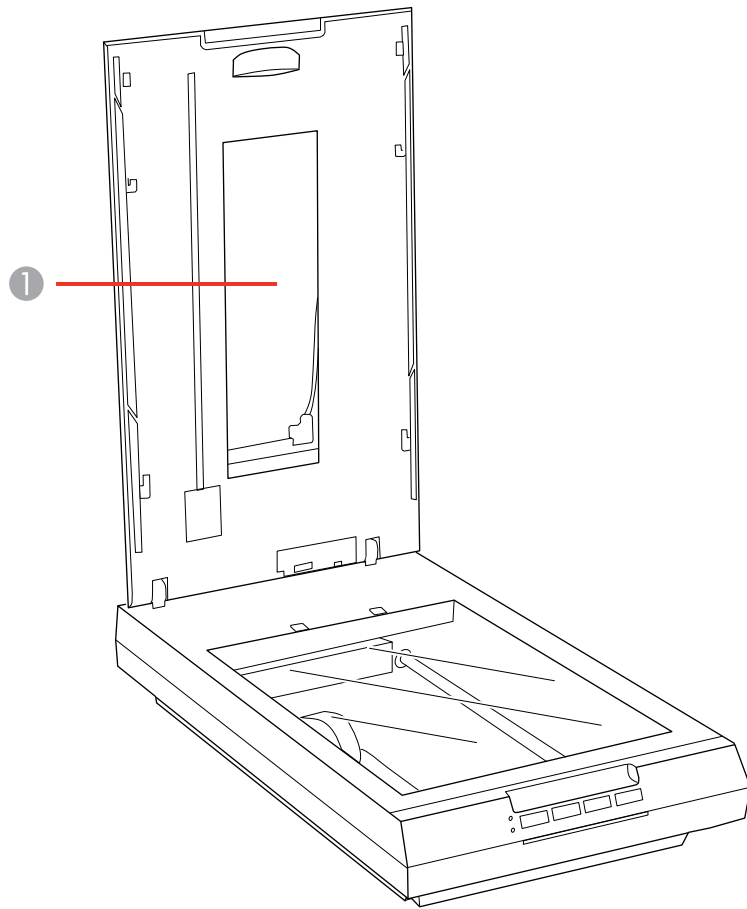
1 Scanner cover



- 1 Document mat
- 2 Scanner glass
- 3 Carriage (beneath scanner glass)



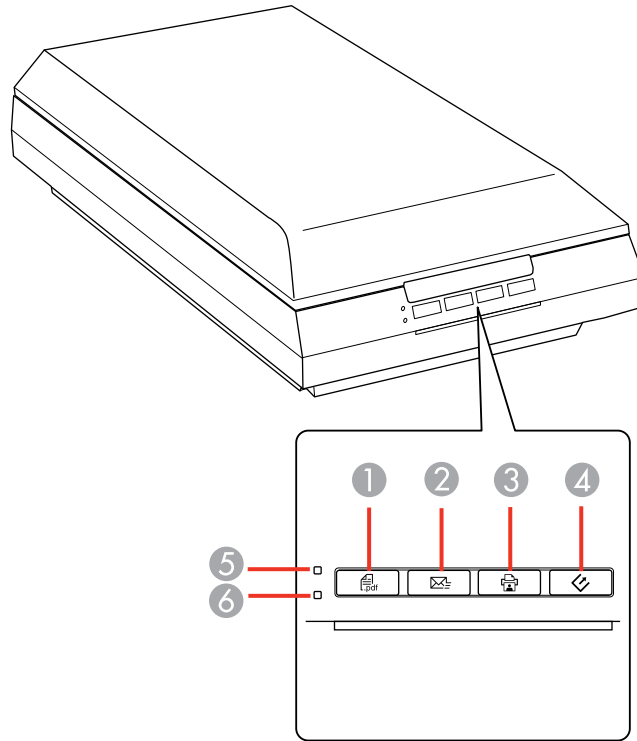
- 1 The  power button
- 2 DC inlet
- 3 Transportation lock
- 4 USB port



1 Transparency unit window (behind document mat)

Parent topic: [Scanner Parts Locations](#)

Scanner Buttons and Lights



Buttons

- 1  PDF
- 2  email
- 3  copy
- 4  start


Lights

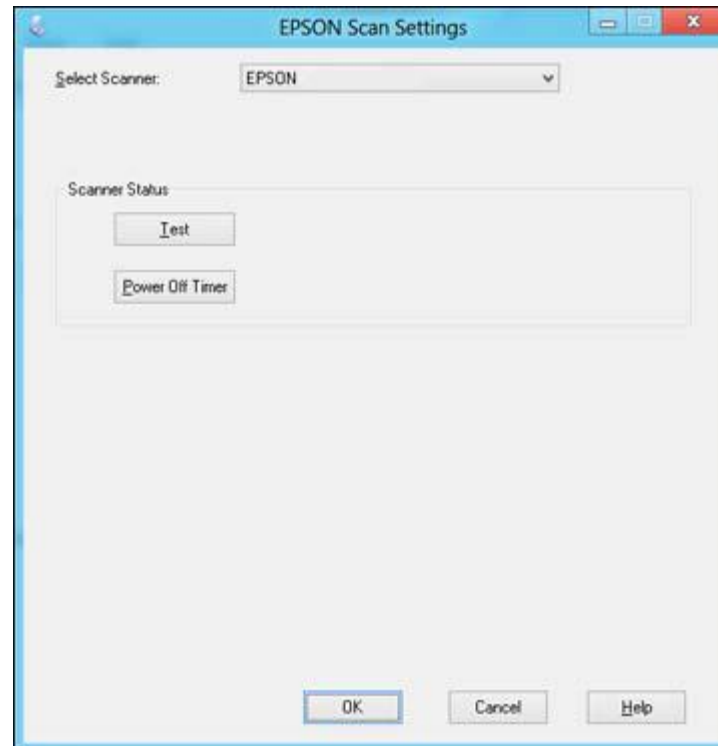
- 5 **Ready**
- 6 **Error**

Parent topic: [Scanner Parts Locations](#)

Changing the Power Off Timer Setting

You can use the Epson Scan Settings software to change the time period before the scanner turns off automatically.

1. Do one of the following to access the Epson Scan Settings program:
 - **Windows 8:** Navigate to the **Start** screen, right-click the screen, and select **All apps**. Click **EPSON Scan Settings**.
 - **Windows (other versions):** Click  or **Start**, and select **All Programs** or **Programs**. Select **Epson**, then **EPSON Scan**, then click **EPSON Scan Settings**.
 - **Mac OS X:** Open the **Applications** folder, then open the **Epson Software** folder and double-click the **EPSON Scan Settings** icon.



2. Click **Power Off Timer**.
3. Enter the time period you want before the scanner turns off automatically as the **Power Off Timer** setting. (To disable the **Power Off Timer** setting, enter **0** (zero).)
4. Click **OK**.

Parent topic: [Scanner Basics](#)

Placing Originals on the Scanner

Follow the instructions here to place your originals on the scanner.

Caution: Do not place anything on top of your scanner or use its cover as a writing surface to avoid damaging it.

[Placing Originals on the Scanner Glass](#)

[Placing Film or Slides on the Scanner](#)

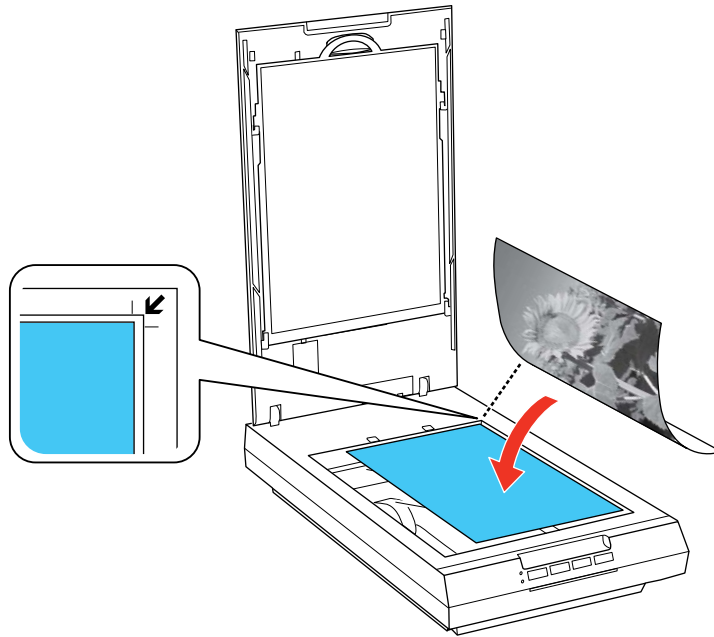
Placing Originals on the Scanner Glass

You can place originals directly on the scanner glass.

Caution: Do not place heavy objects on the scanner glass and do not press on the glass with too much force, or it may damage the scanner. Do not leave photos on the scanner glass for an extended period, or they may stick to the glass.

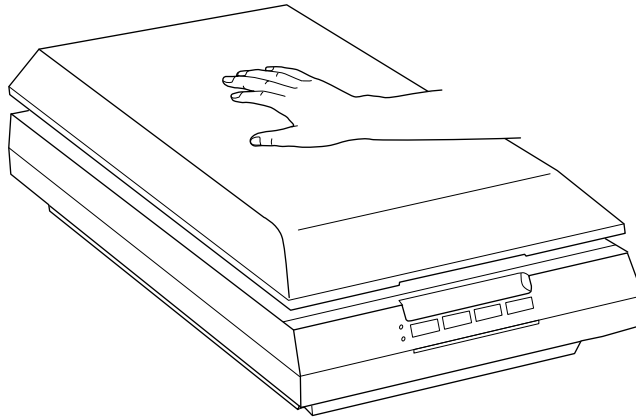
1. Open the scanner cover.
2. Make sure the document mat is installed inside the scanner cover.

3. Place your original facedown on the scanner glass with the top edge facing as shown. Slide the original to the edges of the indicated corner.



Note: You can place multiple originals on the scanner glass. Make sure they are at least 0.8 inch (20 mm) away from each other.

4. Do one of the following:
 - Close the scanner cover gently to keep your original in place.
 - If you are scanning a book or other thick document, close the scanner cover and hold it down as you scan.



Parent topic: [Placing Originals on the Scanner](#)

Placing Film or Slides on the Scanner

Follow the instructions here to place your original film or slides on the scanner.

[Removing the Document Mat](#)

[Placing 35 mm Film Strips on the Scanner](#)

[Placing Medium Format Film on the Scanner](#)

[Placing 35 mm Slides on the Scanner](#)

[Replacing the Document Mat](#)

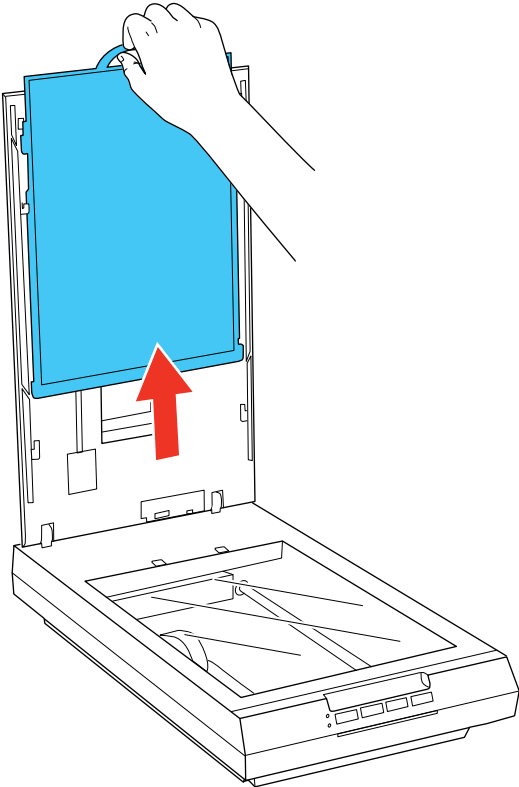
Parent topic: [Placing Originals on the Scanner](#)

Removing the Document Mat

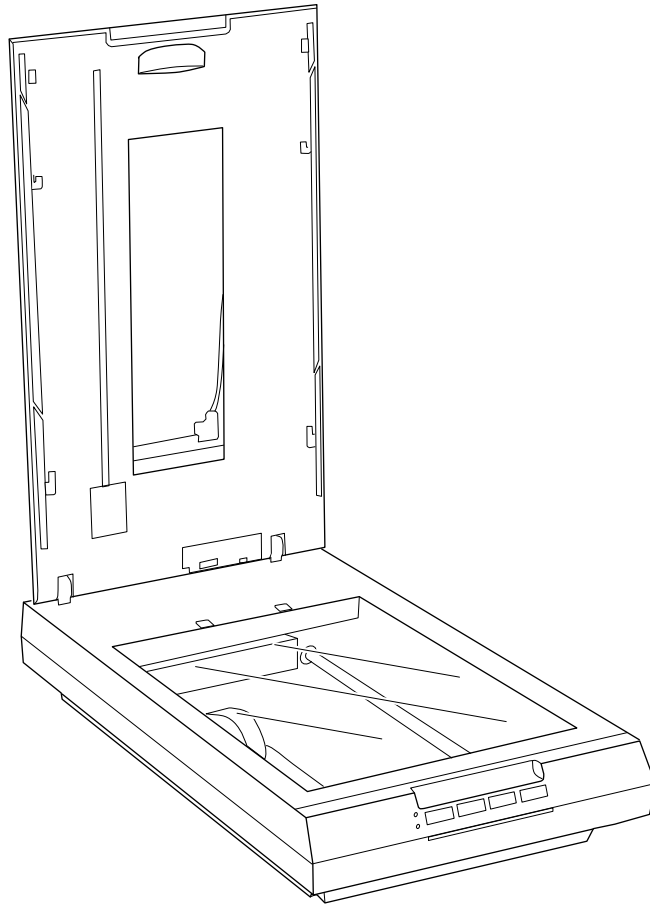
You must remove the document mat from the scanner to scan film or slides. This uncovers the transparency unit window beneath the mat.

1. Open the scanner cover.

2. Slide the document mat out from inside the scanner cover.



3. Clean the transparency unit window and the scanner glass before placing your film or slides.



Parent topic: [Placing Film or Slides on the Scanner](#)

Related tasks

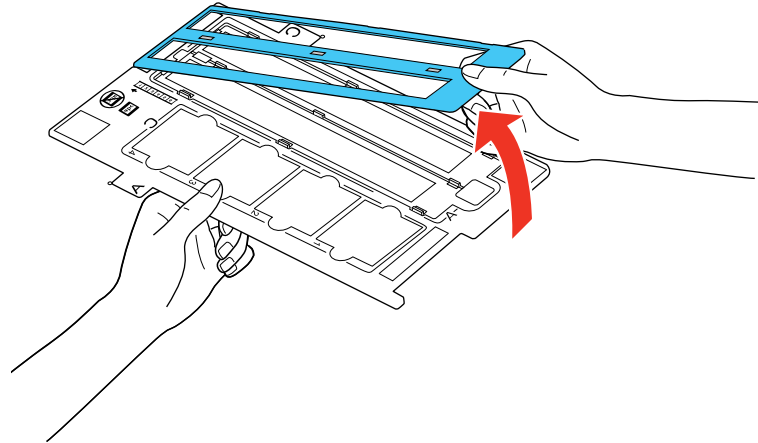
[Cleaning Your Scanner](#)

Placing 35 mm Film Strips on the Scanner

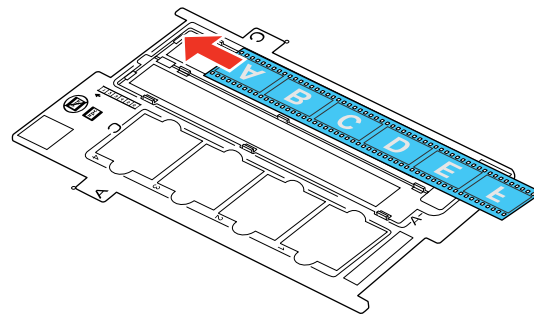
You can place 35 mm film strips on the scanner using the 35 mm film strip holder.

Caution: Hold only the edges of the film strips or use gloves, or you may damage the film. Make sure the white areas on the back of the holder are not scratched, dirty, or covered in any way or the scanner may not correctly detect the holder during scanning.

1. Open the 35 mm film strip holder cover.

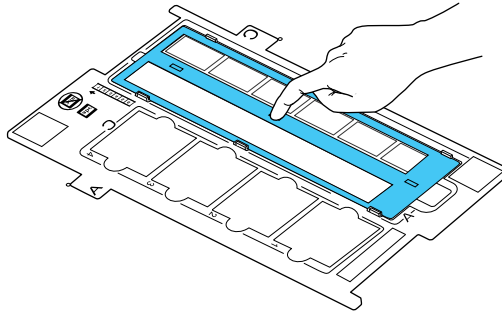


2. Slide up to two film strips into the holder with the shiny side facing down as shown.

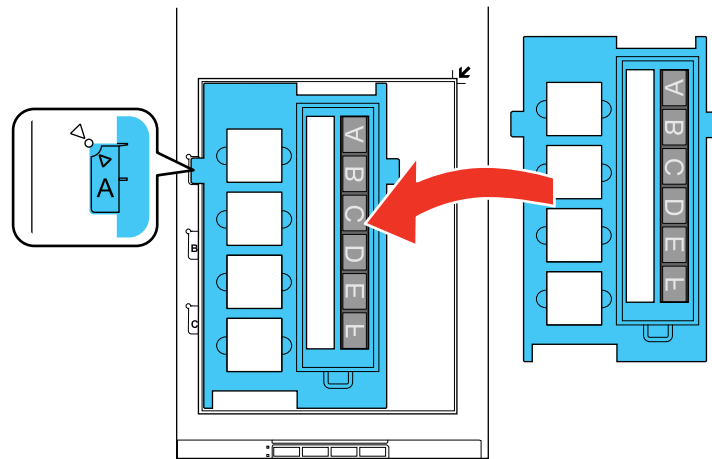


Note: The images and any wording on the film strips should appear backward. Do not cover any of the small holes in the holder.

3. Close the holder cover and press it down until it clicks into place. Also press down all the edges of the cover to secure it.



4. Open the scanner cover.
5. Remove the document mat from the scanner cover, if necessary.
6. Place the holder on the scanner glass as shown. Align tab "A" on the holder with area "A" on the scanner.



7. Close the scanner cover gently to keep the holder in place.

Parent topic: [Placing Film or Slides on the Scanner](#)

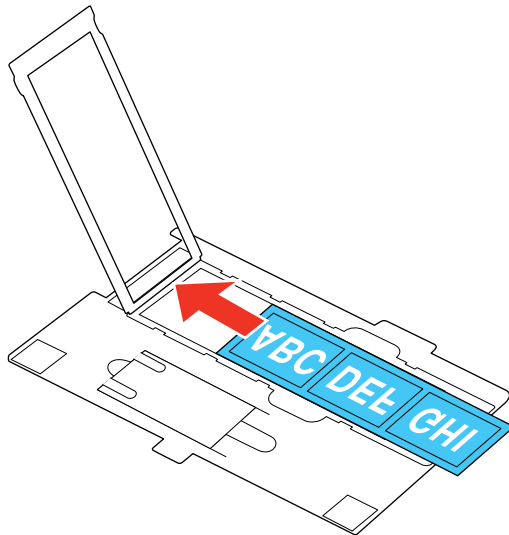
Placing Medium Format Film on the Scanner

You can place medium format film on the scanner using the medium format film holder.

Caution: Hold only the edges of the film strips or use gloves, or you may damage the film. Make sure the white areas on the back of the holder are not scratched, dirty, or covered in any way or the scanner may not correctly detect the holder during scanning.

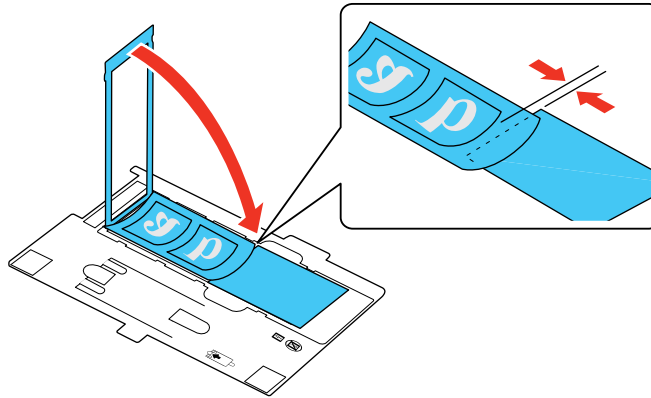
If your film is curled, you can flatten it using the support sheet that came with the medium format film holder.

1. Open the medium format film holder cover.
2. Slide the medium format film into the holder with the shiny side facing down as shown.

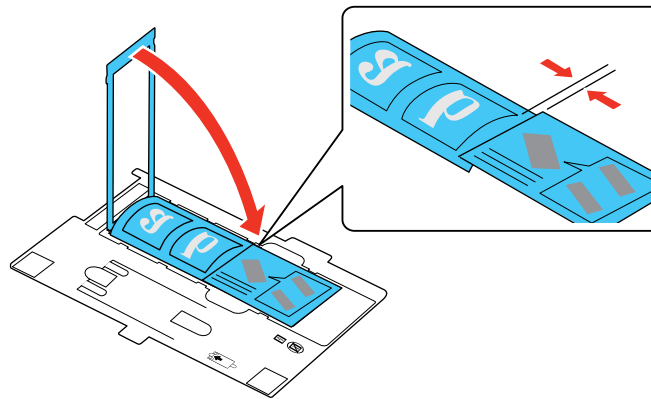


Note: The images and any wording on the film strips should appear backward. Do not cover any of the small holes in the holder.

- If the edges of the film curl up, place the support sheet under the film with the glossy side facing up.

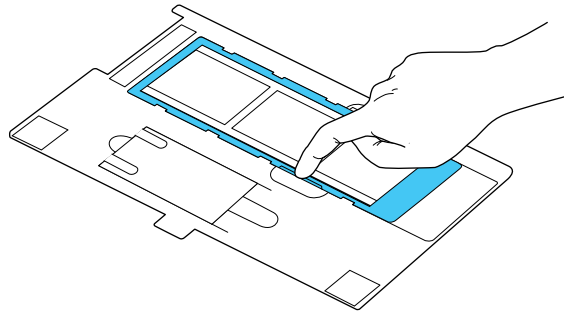


- If the edges of the film curl down, place the support sheet on top of the film with the glossy side facing down.

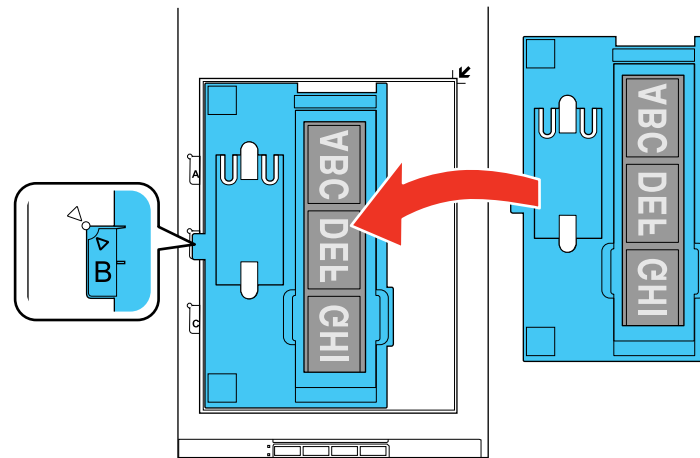


Caution: Make sure only the glossy side of the support sheet touches the film surface. If you place the support sheet upside-down, it may damage the film.

3. Close the film holder cover and press it down until it clicks into place. Also press down all the edges of the cover to secure it.



4. Open the scanner cover.
5. Remove the document mat from the scanner cover, if necessary.
6. Place the holder on the scanner glass as shown. Align tab "B" on the holder with area "B" on the scanner.



7. Close the scanner cover gently to keep the holder in place.

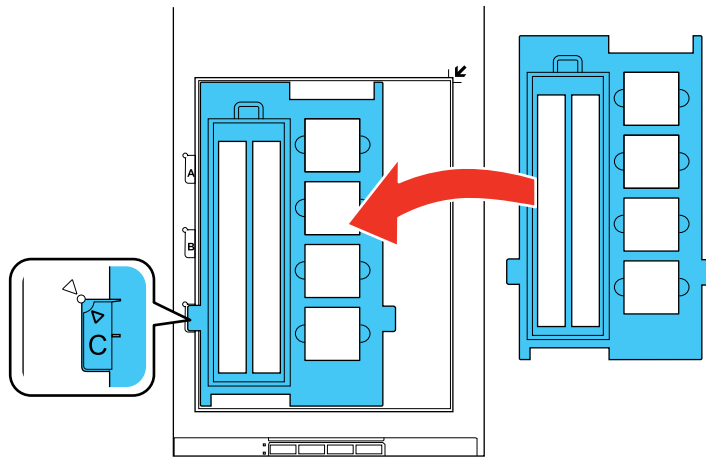
Parent topic: [Placing Film or Slides on the Scanner](#)

Placing 35 mm Slides on the Scanner

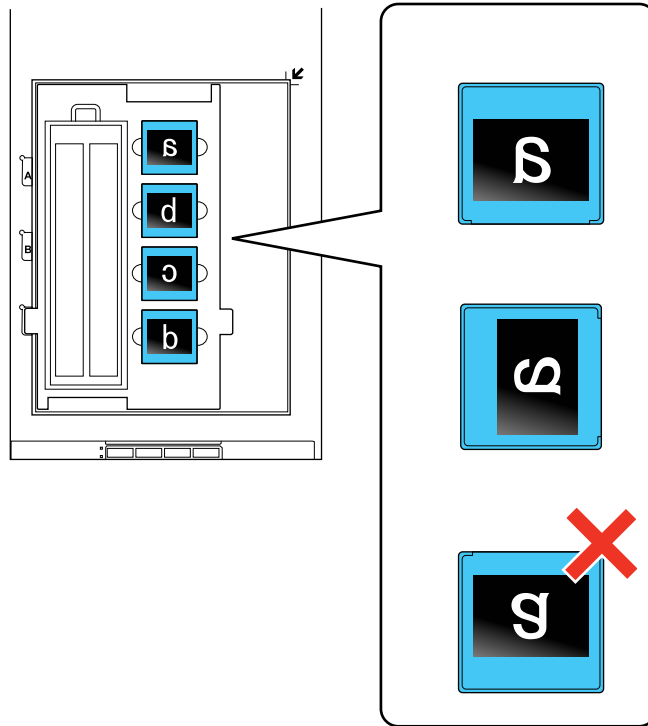
You can place 35 mm slides on the scanner using the slide portion of the 35 mm film strip holder.

Caution: Hold only the edges of the film strips or use gloves, or you may damage the film. Make sure the white areas on the back of the holder are not scratched, dirty, or covered in any way or the scanner may not correctly detect the holder during scanning.

1. Open the scanner cover.
2. Remove the document mat from the scanner cover.
3. Place the holder on the scanner glass as shown. Align tab "C" on the holder with area "C" on the scanner.



- Place up to four slides into the film holder with the shiny sides facing down in the direction shown.



Note: The images and any wording on the slides should appear backward. Do not cover any of the small holes in the film holder.

- Close the scanner cover gently to keep the film holder in place.

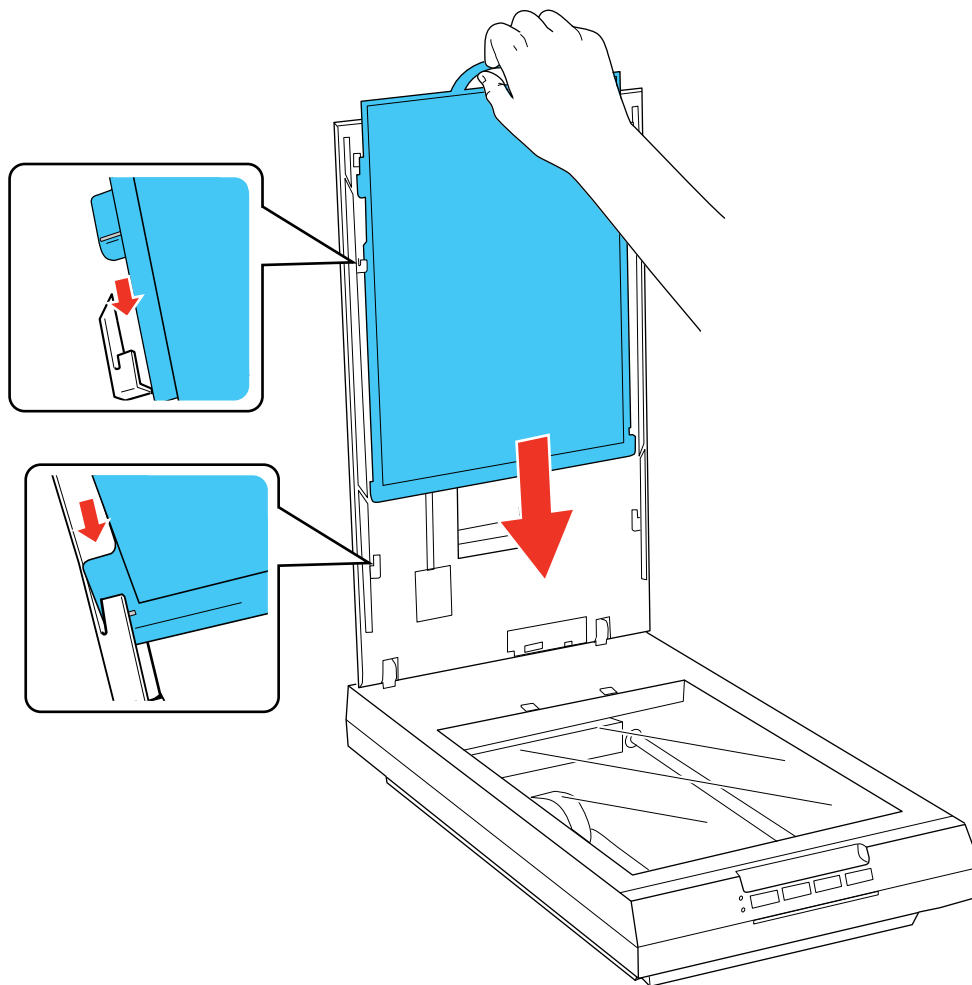
Parent topic: [Placing Film or Slides on the Scanner](#)

Replacing the Document Mat

You must replace the document mat in the scanner before scanning reflective originals, such as documents.

- Open the scanner cover.

2. Slide the document mat into the notches on the scanner cover with the white surface facing out.



Parent topic: [Placing Film or Slides on the Scanner](#)

Scanning

You can scan original documents or photos and save them as digital files.

[Starting a Scan](#)

[Selecting Epson Scan Settings](#)

[Scanning Special Projects](#)

Starting a Scan

After placing your original documents or photos on your product for scanning, start scanning using one of these methods.

[Starting a Scan from a Scanner Button](#)

[Starting a Scan Using the Epson Scan Icon](#)

[Starting a Scan from a Scanning Program](#)

Parent topic: [Scanning](#)

Related topics

[Scanning to Facebook and Other Destinations](#)

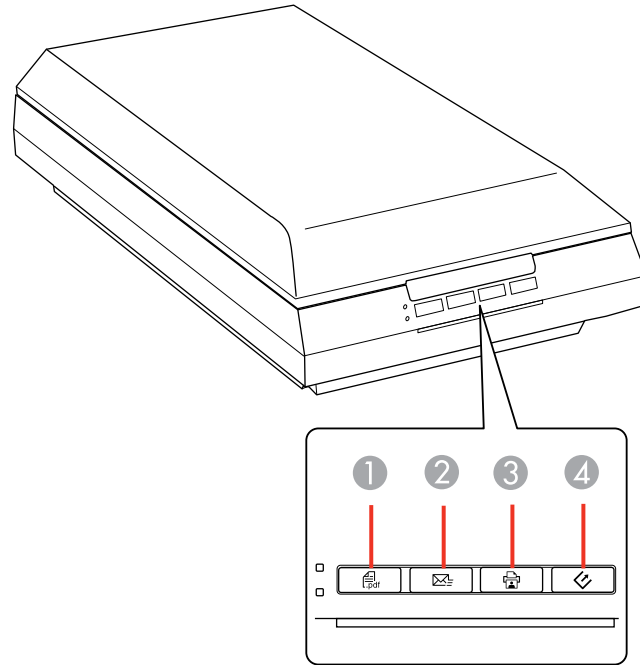
Starting a Scan from a Scanner Button





You can scan using a button on your scanner. This automatically starts a default scanning program, but you can reassign the buttons to different programs.

Your product automatically selects suitable default scan settings, but you can view or change them as necessary.

1. Make sure you installed the scanner software and connected the scanner to your computer or network.
2. Place the original on your scanner.

3. Press one of the following buttons on your scanner:



- 1 The  PDF button starts the Scan to PDF utility so you can scan multiple originals directly to a PDF file
- 2 The  email button starts Epson Scan, scans your original to a JPG file, and opens your email program so you can send it as an attachment
- 3 The  copy button starts the Copy Utility so you can scan your original and print it on a printer connected to your computer
- 4 The  start button starts Epson Scan so you can select your scan mode, settings, and scanned file destination on your computer

The designated scan program starts.

[Changing Default Scan Button Settings](#)

Parent topic: [Starting a Scan](#)

Related tasks


[Scanning to a PDF File Using a Scanner Button](#)

[Using the Scanner as a Copier - Copy Utility](#)

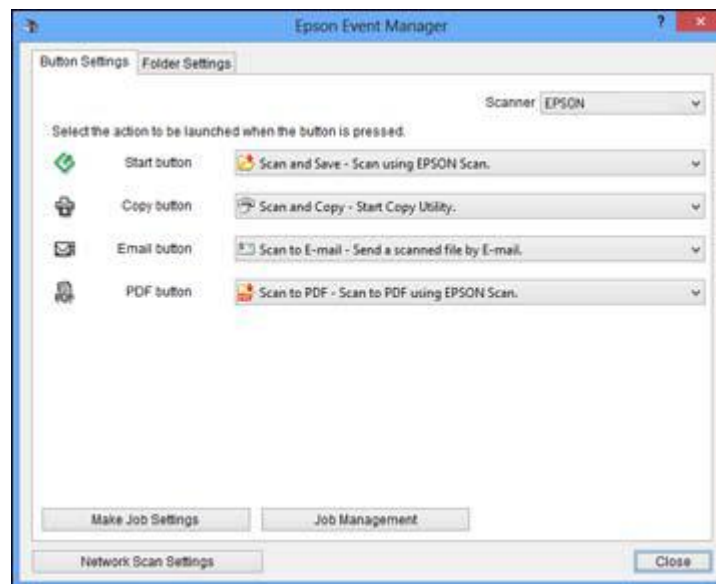
[Scanning Directly to an Email](#)

Changing Default Scan Button Settings

You can view or change the default program and actions performed by each scanner button. You do this using the Event Manager program.

1. Do one of the following to open Event Manager:
 - **Windows 8:** Navigate to the **Start** screen and select **Event Manager**.
 - **Windows (other versions):** Click  or **Start > All Programs** or **Programs > Epson Software > Event Manager**.
 - **Mac OS X:** Open the **Applications** folder, click **Epson Software**, and click **Event Manager**.

You see a window like this:



2. Change the program and action performed by each button as necessary.
3. Click **Close** to close the Event Manager window.

Parent topic: [Starting a Scan from a Scanner Button](#)

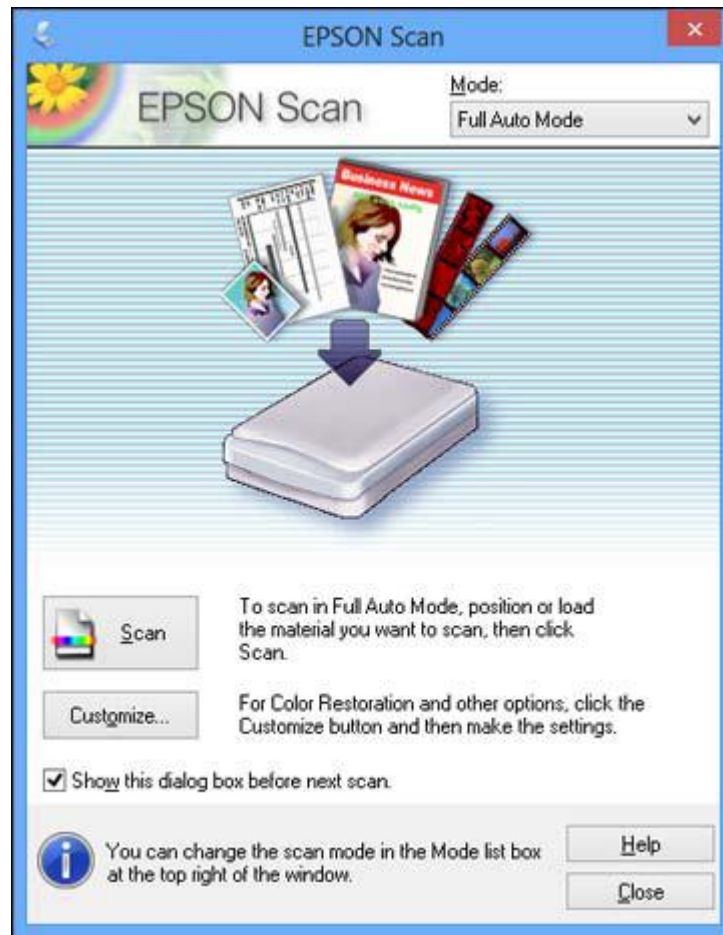
Starting a Scan Using the Epson Scan Icon

You can start the Epson Scan program to select scan settings, scan, and save the scanned image to a file.

- **Windows:** Double-click the **EPSON Scan** icon on your computer desktop.
- **Mac OS X:** Open the **Applications** folder, open the **Epson Software** folder, and double-click the **EPSON Scan** icon.

Note: With Mac OS X 10.6, 10.7, or 10.8, in addition to scanning with Image Capture, you can download and install Epson Scan scanning software. Epson Scan provides additional image adjustment and photo correction features for enhancing scanned images, and provides an interface for TWAIN-compliant OCR scanning software, such as ABBYY FineReader. To download Epson Scan, visit Epson's driver download site ([U.S. downloads](#) or [Canadian downloads](#)).

You see an Epson Scan window like this:



Parent topic: [Starting a Scan](#)

Starting a Scan from a Scanning Program

You can start Epson Scan from a scanning program to select scan settings, scan, and open the scanned image in the program.

Note: With Mac OS X 10.6, 10.7, or 10.8, in addition to scanning with Image Capture, you can download and install Epson Scan scanning software. Epson Scan provides additional image adjustment and photo correction features for enhancing scanned images, and provides an interface for TWAIN-compliant OCR

scanning software, such as ABBYY FineReader. To download Epson Scan, visit Epson's driver download site ([U.S. downloads](#) or [Canadian downloads](#)).

1. Open your scanning program and select its scanning option. (See your scanning program help for instructions.)
2. Select your product.

Note: In certain programs, you may need to select your product as the "source" first. If you see a **Select Source** option, choose it and select your product. With Windows, do not select a **WIA** option for your product; it will not work correctly.

You see an Epson Scan window like this:



Note: In certain programs, you may see the program's scan window instead of the Epson Scan window. Select scanning options as necessary.

Parent topic: [Starting a Scan](#)

Selecting Epson Scan Settings

After starting Epson Scan, you can select settings in various modes to customize your scan.

[Scan Modes](#)

[Selecting the Scan Mode](#)
[Scanning in Full Auto Mode](#)
[Scanning in Home Mode](#)
[Scanning in Office Mode](#)
[Scanning in Professional Mode](#)
[Image Preview Guidelines](#)
[Scan Resolution Guidelines](#)
[Selecting Scan File Settings](#)

Parent topic: [Scanning](#)

Scan Modes

Epson Scan provides a choice of scan modes with different levels of control over your settings.

Full Auto Mode

This mode automatically detects the type of content you are scanning, selects settings for it, and saves your scanned image. You can also select various image adjustment options.

Home Mode

You can select setting groups based on the type of content you are scanning. You can also select various image adjustment options, and preview and size your scanned image.

Office Mode

You can quickly scan text documents and adjust them on a preview screen. You can also select various image adjustment options and preview your scanned image.

Professional Mode

You can manually customize all available settings, and preview and size your scanned image.

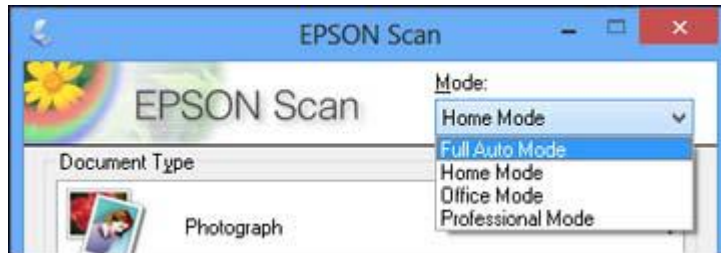
Parent topic: [Selecting Epson Scan Settings](#)

Related tasks

[Scanning in Full Auto Mode](#)
[Scanning in Home Mode](#)
[Scanning in Office Mode](#)
[Scanning in Professional Mode](#)

Selecting the Scan Mode

Select the Epson Scan mode you want to use from the Mode box in the upper right corner of the Epson Scan window:



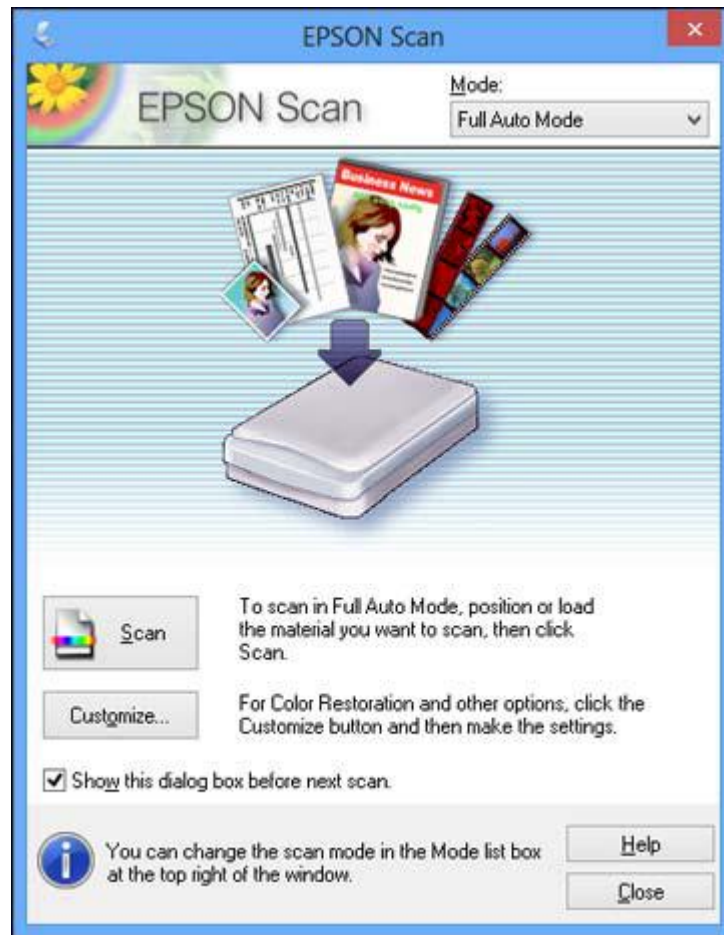
Parent topic: [Selecting Epson Scan Settings](#)

Scanning in Full Auto Mode

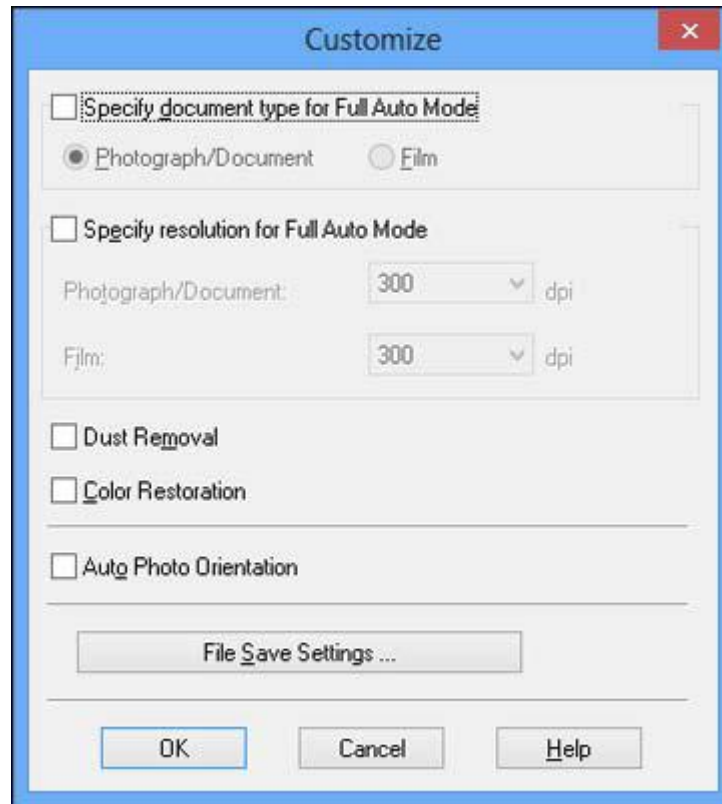
When you scan in Full Auto Mode, Epson Scan automatically saves your scanned file in JPEG format in your operating system's Pictures or My Pictures folder, or opens it in your scanning program. You can change the scanned file settings and select various image adjustment options before you scan, if necessary.

1. Start Epson Scan and select **Full Auto Mode** as the Mode setting.

You see this window:



2. To select image adjustment options or change your scanned file settings, click **Customize**, select the settings, and click **OK**.



- To choose any of the available image adjustment options, select the checkbox for the option.
- To change the scanned file settings, click **File Save Settings**.

3. Click **Scan**.

Epson Scan scans your original, and saves the file in the selected folder or opens it in your scanning program. If the file was saved directly to your computer, you see the file in the Windows Explorer or Mac OS X Finder, where you can view and print the image, if desired.

[Available Image Adjustments - Full Auto Mode](#)

Parent topic: [Selecting Epson Scan Settings](#)

Related tasks

[Scanning in Home Mode](#)

[Scanning in Office Mode](#)

[Scanning in Professional Mode](#)

Available Image Adjustments - Full Auto Mode

You can select these image adjustment options in Epson Scan Full Auto Mode.

Dust Removal

Removes dust marks from your originals automatically.

Color Restoration

Restores the colors in faded photos automatically.

Auto Photo Orientation

Checks the preview image for faces, the sky, and other features, and then correctly rotates the photo when it is scanned, if necessary. (If your photo is not oriented correctly using this option, deselect this option and scan again.)

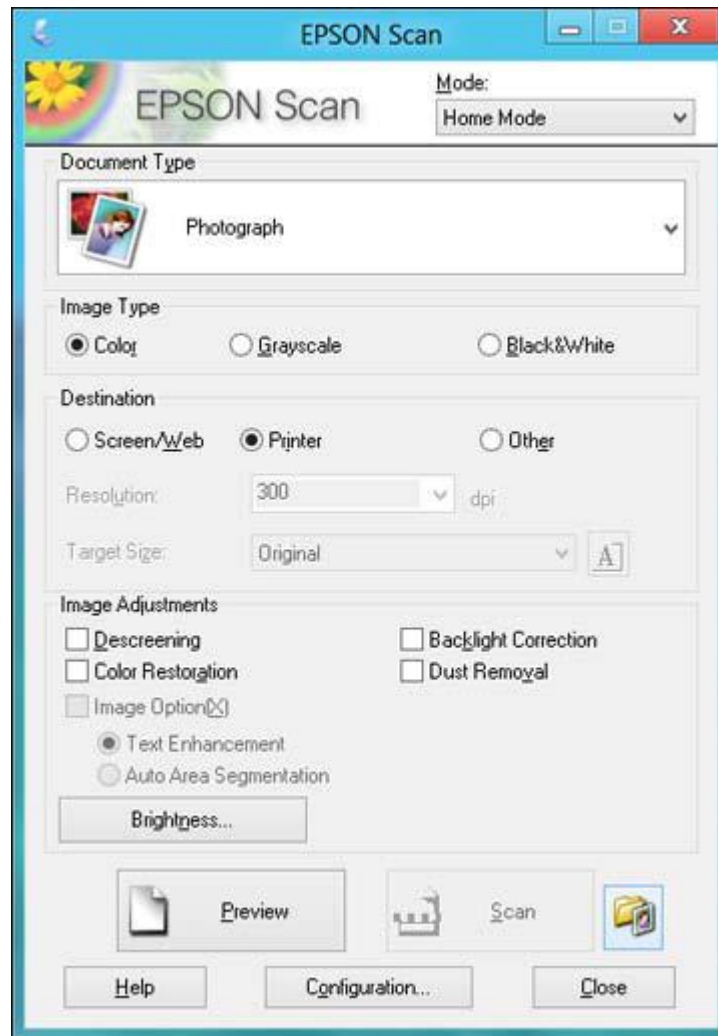
Parent topic: [Scanning in Full Auto Mode](#)

Scanning in Home Mode

When you scan in Home Mode, Epson Scan automatically saves your scanned file in JPEG format in your operating system's Pictures or My Pictures folder, or opens it in your scanning program. You can select settings, preview, and change the scanned file settings as necessary.

1. Start Epson Scan and select **Home Mode** as the Mode setting.

You see this window:



2. Select the **Document Type** setting that matches your original, such as **Photograph** or **Text/Line Art**.
3. Select the **Image Type** setting that matches your original.

4. Select the way you plan to use your scanned image as the **Destination** setting. (The Resolution setting is selected automatically based on the Destination setting you choose.)
 - **Screen/Web**: Select this option for images you will email, view on a computer screen, or post on the web.
 - **Printer**: Select this option for images you will print or documents you will convert to editable text using OCR (Optical Character Recognition) software.
 - **Other**: Select this option if you want to select a custom resolution for your image.
5. If you selected **Other** in the last step, select the **Resolution** setting you want to use for your scan.
6. Click the **Preview** button.

Epson Scan previews your original and displays the result in a separate Preview window.
7. If desired, select the area in your preview image that you want to scan (scan area).
8. Select any of the image adjustment settings you want to use. Before making adjustments, click the image or scan area in the Preview window.
9. If you want to reduce or enlarge your image as you scan, select the **Target Size** setting you want to use.
10. Click **Scan**.

You see the File Save Settings window.
11. Change any of the necessary file save settings and click **OK**.

Epson Scan scans your original, and saves the file in the selected folder or opens it in your scanning program. If the file was saved directly to your computer, you see the file in the Windows Explorer or Mac OS X Finder, where you can view and print the image, if desired.

[Selecting a Scan Area - Home Mode](#)

[Available Image Adjustments - Home Mode](#)

Parent topic: [Selecting Epson Scan Settings](#)

Related tasks

[Scanning in Full Auto Mode](#)

[Scanning in Office Mode](#)

[Scanning in Professional Mode](#)

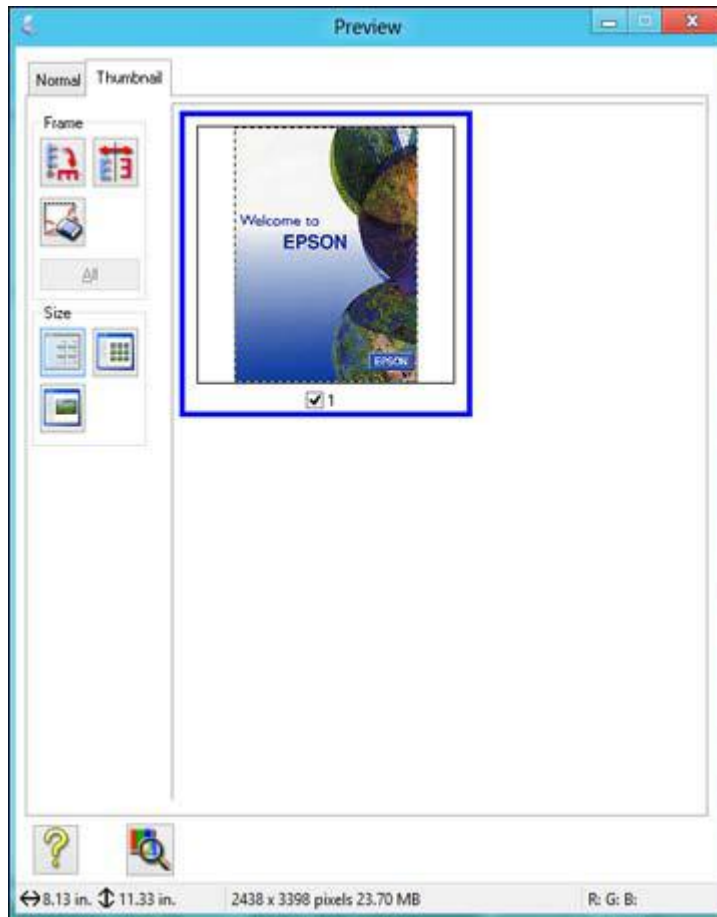
Selecting a Scan Area - Home Mode


You can select a specific area in your preview image to include in your scanned image. You can select the entire image area or a portion of it. You can even select multiple scan areas to create multiple scanned images of different areas (Normal Preview mode only).

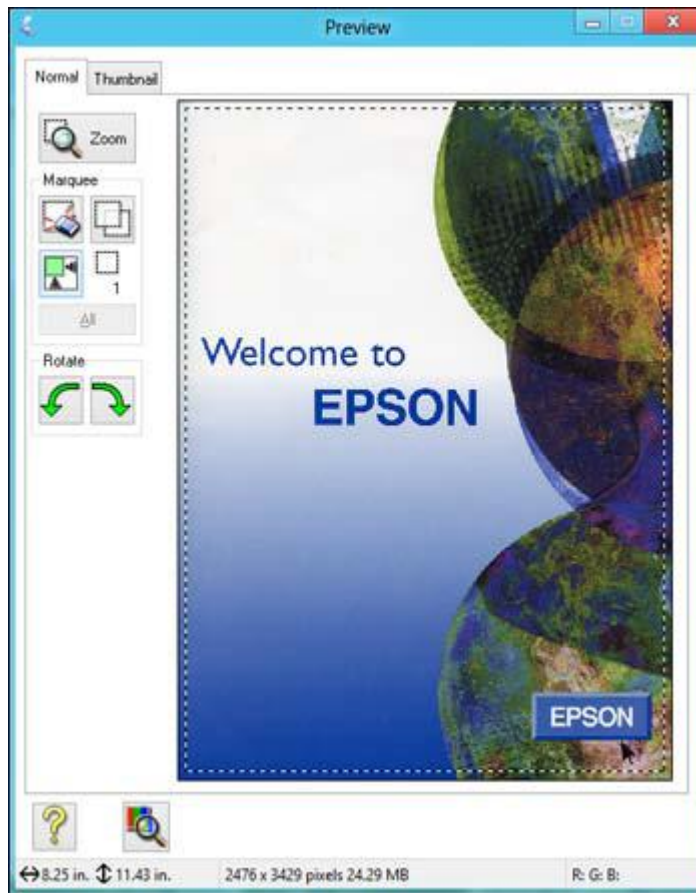
You can also use the scan area to select specific Image Adjustments settings for a scanned image. Just be sure to click inside the scan area before selecting the settings.


1. Do one of the following to select your scan area in the Preview image:

- **Thumbnail preview:** Your scan area is selected automatically, but you can change it. Place your cursor in one corner of the desired scan area, then click and drag the cursor to the opposite corner to create a marquee (dotted line) on the preview image.




- **Normal preview:** Click the  Auto Locate icon to create a marquee (dotted line) on the preview image.



2. Do the following, as necessary, to work with the selected scan area:
 - If the marquee is correct, continue with the next step.
 - To move the marquee, click inside the scan area and drag the marquee where you want it.
 - To resize the scan area, place your cursor over the edge or corner of the marquee, then click and drag the edges where you want them. (Hold down the **Shift** key as you resize the marquee to retain the same width/height proportions.)
 - **Normal preview:** To create additional marquees (up to 50), click the  Copy Marquee icon to copy the existing marquee and paste it on the preview image.

Note: If you draw multiple marquees, make sure you select the **All** button in the Preview window before you scan. Otherwise, only the area inside the currently selected marquee will be scanned.

- To delete a marquee, click the marquee, then click the  Delete Marquee icon.
3. Click inside the scan area and make any necessary settings in the Epson Scan window.

Parent topic: [Scanning in Home Mode](#)

Available Image Adjustments - Home Mode

You can select these Image Adjustments options in Epson Scan Home Mode.



Note: Select the **Image Option** checkbox if you need to set any of the grayed-out image adjustments. Not all adjustment settings may be available, depending on the Document Type and Image Type setting. Click the **Brightness** button to access additional settings.

Descreening

Removes the ripple pattern that might appear in subtly shaded image areas, such as skin tones. This option improves results when scanning magazines or newspapers. (The results of descreening do not appear in the preview image, only in your scanned image.)

Color Restoration

Restores the colors in faded photos automatically.

Backlight Correction

Removes shadows from photos that have too much background light.

Dust Removal

Removes dust marks from your originals automatically.

DIGITAL ICE Technology

DIGITAL ICE removes dust and scratch marks from photos. It cannot be used with the **Dust Removal** option. The effects of DIGITAL ICE Technology will not appear in the Preview of the image. You must scan the original to see the results.

Text Enhancement

Sharpens the appearance of letters in text documents.

Auto Area Segmentation

Makes grayscale images clearer and text recognition more accurate by separating the text from the graphics.

Brightness

Adjusts the overall lightness and darkness of the scanned image.

Contrast

Adjusts the difference between the light and dark areas of the overall scanned image.

Threshold

Adjusts the level at which black areas in text and line art are delineated, improving text recognition in OCR (Optical Character Recognition) programs.

Parent topic: [Scanning in Home Mode](#)

Related concepts

[Convert Scanned Documents to Editable Text \(OCR\)](#)

Related tasks

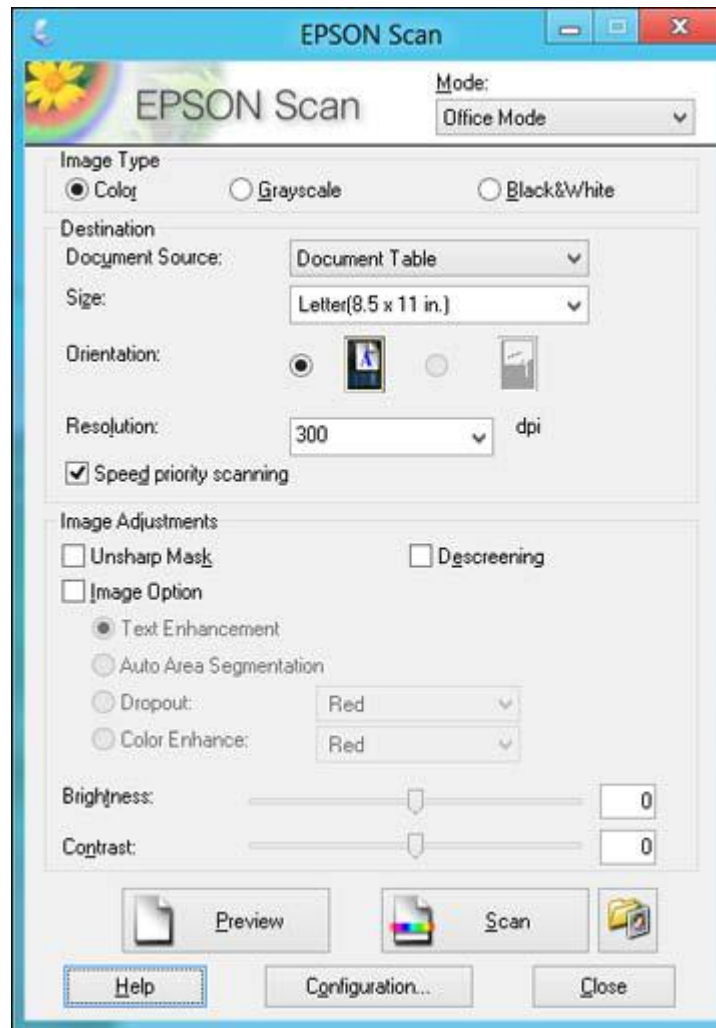
[Removing Dust and Scratch Marks Using DIGITAL ICE Technology](#)

Scanning in Office Mode

When you scan in Office Mode, Epson Scan automatically saves your scanned file in JPEG format in your operating system's Pictures or My Pictures folder, or opens it in your scanning program. You can select settings, preview, and change the scanned file settings as necessary.

1. Start Epson Scan and select **Office Mode** as the Mode setting.

You see this window:



2. Select the **Image Type** setting that matches your original.
3. Select the **Document Source** setting indicating where you placed your original.
4. Select the **Size** and **Orientation** settings that match your original.
5. Select the **Resolution** setting you want to use for your scan.
6. Make sure **Speed Priority Scanning** is selected for faster scans.

7. Click the **Preview** button.

Epson Scan previews your original and displays the result in a separate Preview window.

8. If desired, select the area in your preview image that you want to scan (scan area).
9. Select any of the image adjustment settings you want to use. Before making adjustments, click the image or scan area in the Preview window.
10. Click **Scan**.

You see the File Save Settings window.

11. Change any of the necessary file save settings and click **OK**.

Epson Scan scans your original, and saves the file in the selected folder or opens it in your scanning program. If the file was saved directly to your computer, you see the file in the Windows Explorer or Mac OS X Finder, where you can view and print the image, if desired.

[Selecting a Scan Area - Office Mode](#)

[Available Image Adjustments - Office Mode](#)

Parent topic: [Selecting Epson Scan Settings](#)

Related tasks

[Scanning in Full Auto Mode](#)


[Scanning in Home Mode](#)

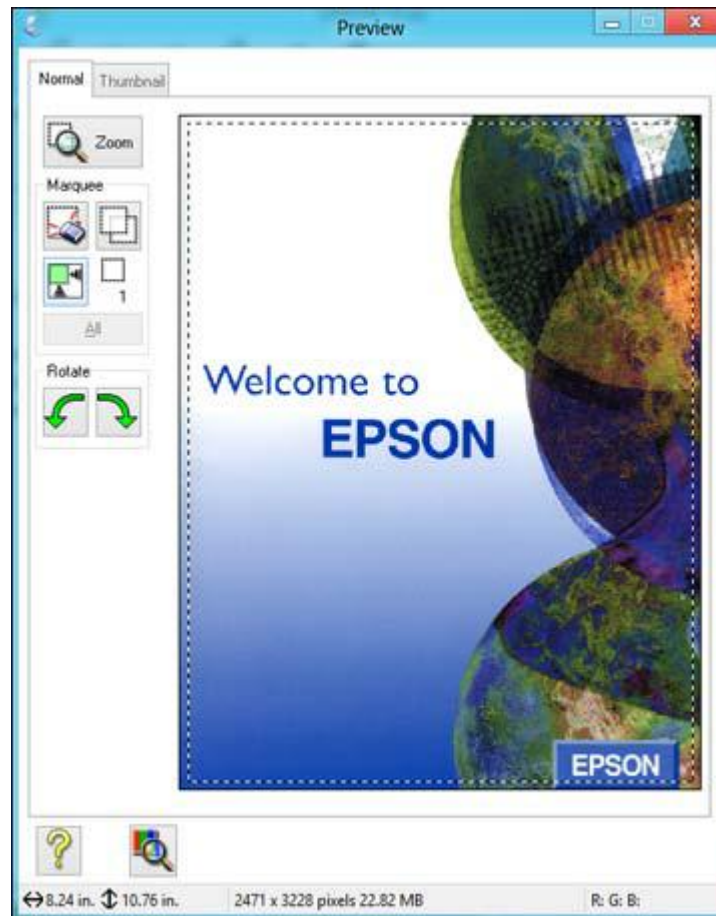
[Scanning in Professional Mode](#)

Selecting a Scan Area - Office Mode


You can select a specific area in your preview image to include in your scanned image. You can select the entire image area or a portion of it. You can even select multiple scan areas to create multiple scanned images of different areas.

You can also use the scan area to select specific Image Adjustments settings for a scanned image. Just be sure to click inside the scan area before selecting the settings.


1. In the Preview window, click the  Auto Locate icon to create a marquee (dotted line) on the preview image.



2. Do the following, as necessary, to work with the selected scan area:
 - If the marquee is correct, continue with the next step.
 - To move the marquee, click inside the scan area and drag the marquee where you want it.

- To resize the scan area, place your cursor over the edge or corner of the marquee, then click and drag the edges where you want them. (Hold down the **Shift** key as you resize the marquee to retain the same width/height proportions.)
- To create additional marquees (up to 50, if available), click the  Copy Marquee icon to copy the existing marquee and paste it on the preview image.

Note: If you draw multiple marquees, make sure you select the **All** button in the Preview window before you scan. Otherwise, only the area inside the currently selected marquee will be scanned.

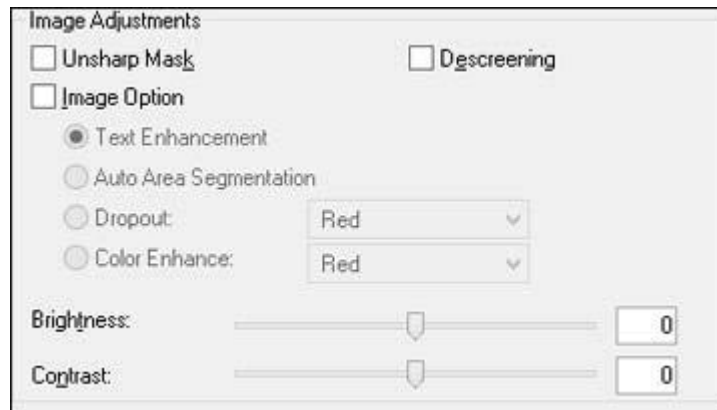
- To delete a marquee, click the marquee, then click the  Delete Marquee icon.

3. Click inside each scan area and make any necessary settings in the Epson Scan window.

Parent topic: [Scanning in Office Mode](#)

Available Image Adjustments - Office Mode

You can select these Image Adjustments options in Epson Scan Office Mode.



Note: Select the **Image Option** checkbox if you need to set any of the grayed-out image adjustments. Not all adjustment settings may be available, depending on the Image Type setting.

Unsharp Mask

Makes the edges of certain image areas clearer. Turn off this option to leave softer edges.

Descreening

Removes the ripple pattern that might appear in subtly shaded image areas, such as skin tones. This option improves results when scanning magazines or newspapers. (The results of descreening do not appear in the preview image, only in your scanned image.)

Text Enhancement

Sharpens the appearance of letters in text documents.

Auto Area Segmentation

Makes grayscale images clearer and text recognition more accurate by separating the text from the graphics.

Dropout

The scan will not pick up the color you select. This setting is only available if you select an **Image Type** of **Grayscale** or **Black & White**.

Color Enhance

Enhances the red, green, or blue shades in the scanned image.

Brightness

Adjusts the overall lightness and darkness of the scanned image.

Contrast

Adjusts the difference between the light and dark areas of the overall scanned image.

Threshold

Adjusts the level at which black areas in text and line art are delineated, improving text recognition in OCR (Optical Character Recognition) programs.

Parent topic: [Scanning in Office Mode](#)

Related concepts

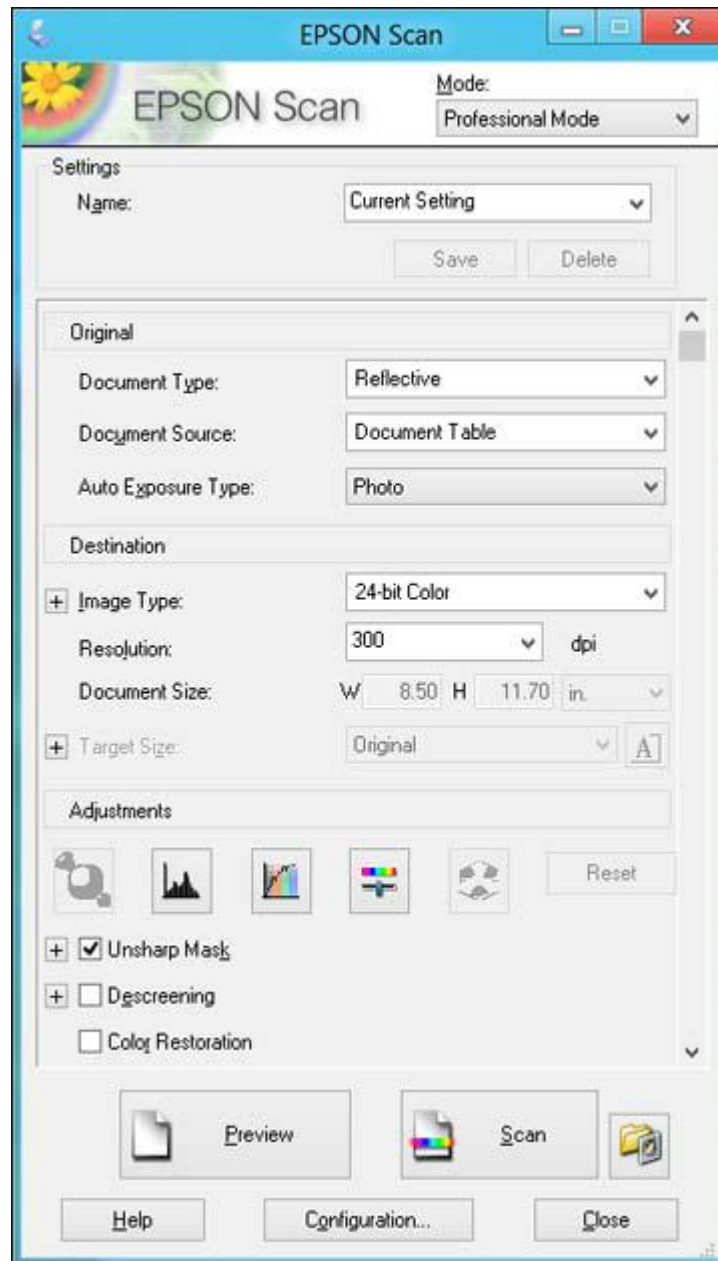
[Convert Scanned Documents to Editable Text \(OCR\)](#)

Scanning in Professional Mode

When you scan in Professional Mode, Epson Scan automatically saves your scanned file in JPEG format in your operating system's Pictures or My Pictures folder, or opens it in your scanning program. You can select settings, preview, and change the scanned file settings as necessary.

1. Start Epson Scan and select **Professional Mode** as the Mode setting.

You see this window:



2. Select the **Document Type** setting that matches your original, such as **Reflective** for documents or photos, or **Film** for film or slides.
3. Select the **Document Source** setting indicating where you placed your original.
4. Select the specific type of original you are scanning as the **Auto Exposure Type** setting: **Document** or **Photo**.
5. Select the details of your original and how you want it scanned as the **Image Type** setting.
6. Select the **Resolution** setting you want to use for your scan.
7. Click the **Preview** button.

Epson Scan previews your original and displays the result in a separate Preview window.

8. If desired, select the area in your preview image that you want to scan (scan area).
9. Select any of the image adjustment settings you want to use. Before making adjustments, click the image or scan area in the Preview window.
10. If you want to reduce or enlarge your image as you scan, select the **Target Size** setting you want to use.
11. Click **Scan**.

You see the File Save Settings window.

12. Change any of the necessary file save settings and click **OK**.

Epson Scan scans your original, and saves the file in the selected folder or opens it in your scanning program. If the file was saved directly to your computer, you see the file in the Windows Explorer or Mac OS X Finder, where you can view and print the image, if desired.

[Available Image Types - Professional Mode](#)

[Available Image Adjustments - Professional Mode](#)

[Selecting a Scan Size - Professional Mode](#)

Parent topic: [Selecting Epson Scan Settings](#)

Related tasks

[Scanning in Full Auto Mode](#)

[Scanning in Home Mode](#)

[Scanning in Office Mode](#)

Available Image Types - Professional Mode

You can select these Image Type options in Epson Scan Professional Mode.

48-bit Color

Select this setting for color photos that will be edited in a 48-bit image editor.

24-bit Color

Select this setting for color photos.

Color Smoothing

Select this setting for color graphic images, such as charts or graphs.

16-bit Grayscale

Select this setting for black-and-white photos with many shades of gray.

8-bit Grayscale

Select this setting for black-and-white photos with a few shades of gray.

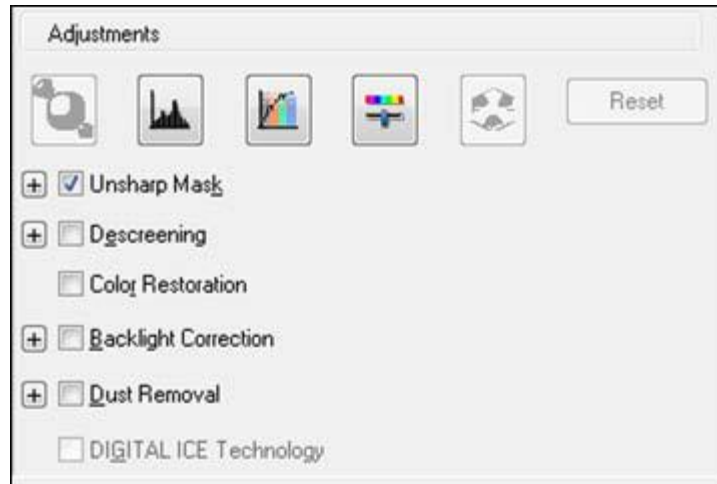
Black & White

Select this setting for black text documents or line art.


Parent topic: [Scanning in Professional Mode](#)

Available Image Adjustments - Professional Mode

You can select these Adjustments options in Epson Scan Professional Mode.



Note: Not all adjustment settings may be available, depending on the Image Type setting.

Click the  image adjustment icon to access additional settings.

Click the + (Windows) or ► (Mac OS X) icon next to a setting to change the level of adjustment.

Unsharp Mask

Makes the edges of certain image areas clearer. Turn off this option to leave softer edges.

Descreening

Removes the ripple pattern that might appear in subtly shaded image areas, such as skin tones. This option improves results when scanning magazines or newspapers. (The results of descreening do not appear in the preview image, only in your scanned image.)

Color Restoration

Restores the colors in faded photos automatically.

Backlight Correction

Removes shadows from photos that have too much background light.

Dust Removal

Removes dust marks from your originals automatically.

DIGITAL ICE Technology

DIGITAL ICE removes dust and scratch marks from photos. It cannot be used with the **Dust Removal** option. The effects of DIGITAL ICE Technology will not appear in the Preview of the image. You must scan the original to see the results.


Dropout

The scan will not pick up the color you select. This setting is only available if you select an **Image Type** of **Grayscale** or **Black & White**.


Color Enhance

Enhances the red, green, or blue shades in the scanned image.


Auto Exposure

Automatically adjusts the image exposure settings when you click the  Auto Exposure icon. To automatically adjust image exposure settings continuously, click the **Configuration** button, click the **Color** tab, and select **Continuous auto exposure**. You can adjust the level of auto exposure using a slider.

Histogram Adjustment

Provides a graphical interface for adjusting highlight, shadow, and gamma levels individually. (For advanced users only.) Click the  histogram icon to access the settings.

Tone Correction

Provides a graphical interface for adjusting tone levels individually. (For advanced users only.) Click the  tone correction icon to access the settings.

Brightness

Adjusts the overall lightness and darkness of the scanned image.

Contrast

Adjusts the difference between the light and dark areas of the overall scanned image.


Saturation

Adjusts the density of colors in the overall image.

Color Balance

Adjusts the balance of colors in the overall image.

Color Palette

Provides a graphical interface for adjusting mid-tone levels, such as skin tones, without affecting the highlight and shadow areas of the image. (For advanced users only.) Click the  Color Palette icon to access the settings.

Threshold

Adjusts the level at which black areas in text and line art are delineated, improving text recognition in OCR (Optical Character Recognition) programs.

Parent topic: [Scanning in Professional Mode](#)

Related concepts

[Convert Scanned Documents to Editable Text \(OCR\)](#)

Related tasks


[Removing Dust and Scratch Marks Using DIGITAL ICE Technology](#)

Selecting a Scan Size - Professional Mode

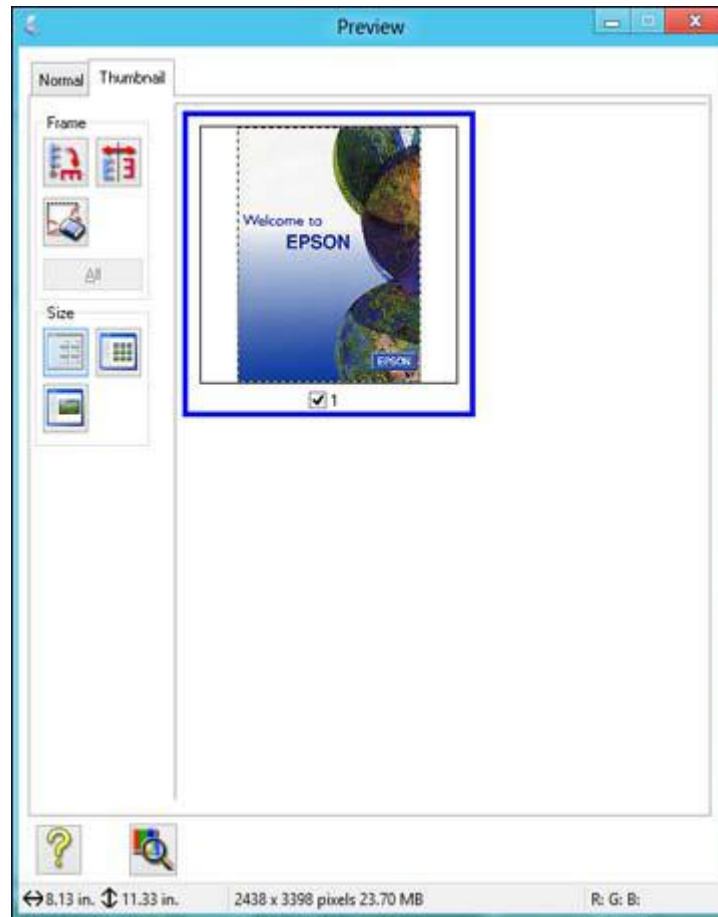
You can reduce or enlarge the size of your image as you scan. You can also select a specific scan size, such as a common photo size like 4 × 6 inches (102 × 152 mm). This places a scan area of that size on the preview image so you can use it to help crop the image in the correct proportions.

1. Click the **Preview** button to preview your image.
2. In the Epson Scan window, select the size you want your scanned image to be from the **Target Size** list.



Note: If you need to rotate the orientation of the target size for your image, click the  orientation icon.

A marquee (dotted line) appears on your preview image proportioned for the size you selected.



3. Do the following, as necessary, to work with the selected scan area:
 - To move the marquee, click inside the scan area and drag the marquee where you want it.
 - To resize the scan area, place your cursor over the edge or corner of the marquee, then click and drag the edge where you want it.

Note: Manually adjusting the marquee will not change the target size of the scanned file. The marquee only indicates the area of the image that will be scanned.


4. To create a scanned image size that is not available in the Target Size list, click the **Customize** option.



5. Name the custom size, enter the size, click **Save**, and click **OK**. Then create a scan area on the preview image.
The marquee is automatically proportioned for your custom scan size.
6. To use additional sizing tools, click the + (Windows) or ► (Mac OS X) icon next to the Target Size setting and select options as desired.



- **Scale:** Reduces or enlarges your image by the percentage you enter.

- **Trimming:** Turns automatic image cropping on or off.
-  Unlock icon: Unlocks the width/height proportions of the scanned image size so you can adjust it without constraint.

Parent topic: [Scanning in Professional Mode](#)

Image Preview Guidelines

You can preview your scanned image so you can adjust the scan settings using the preview as a guide. There are two types of preview available, depending on the scan mode and selected settings:

Thumbnail preview

A thumbnail preview displays your previewed images as thumbnails with the scanned image area and exposure automatically selected.

Normal preview

A normal preview displays your previewed images in their entirety so you can select the scanned image area and other settings manually.

Parent topic: [Selecting Epson Scan Settings](#)

Scan Resolution Guidelines

If you plan to enlarge a scanned image so you can print it at a larger size, you may need to increase the resolution from the default resolution set by Epson Scan. Follow these guidelines to determine the resolution setting you need:

- You will enlarge the image as you scan it.

If you will enlarge the image using Epson Scan's Target Size setting (Home and Professional modes only), you do not need to increase the Resolution setting.

- You will scan the image at its original size, but enlarge it later in an image-editing program.

Increase Epson Scan's Resolution setting in your scan. Increase the resolution by the same amount you will increase the image size to retain a high image quality. For example, if the resolution is 300 dpi (dots per inch) and you will double the image size later, change the Resolution setting to 600 dpi.

- You will scan the image at 100% or smaller size.

Select Epson Scan's Resolution setting based on how you will use the scanned image:

- Email/view on a computer screen/post on the web: 96 to 150 dpi
- Print/convert to editable text (OCR): 300 dpi
- Fax: 200 dpi

Parent topic: [Selecting Epson Scan Settings](#)

Related references

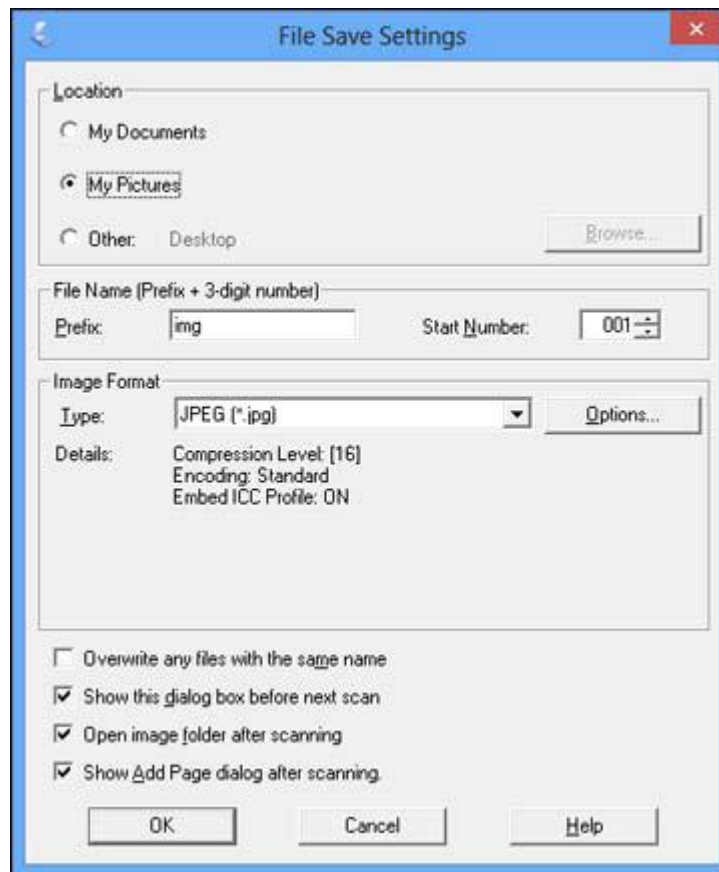
[Available Image Adjustments - Home Mode](#)


[Available Image Adjustments - Professional Mode](#)

[Available Image Adjustments - Office Mode](#)

Selecting Scan File Settings

You can select the location, name, and format of your scan file on the File Save Settings window. You can also select various optional settings that control how Epson Scan behaves when you scan and save files.



The File Save Settings window may appear after you click **Scan** on the Epson Scan window. You may also be able to access the window by clicking the  icon on the Epson Scan window.

1. Do one of the following to select the folder in which you want to save your scanned image:
 - Click the button for one of the displayed folders.
 - Click the **Other** button, click the **Browse** or **Choose** button, and select a folder.
2. Type in a stem file name in the **Prefix** field. This name is used along with numbers to automatically name your scanned files.
3. Select a different number as the **Start Number** setting, if you like.
4. Select the file format you want to use in the Image Format **Type** menu.
5. If your file format provides optional settings, click the **Options** button to select them.
6. Choose any of the optional settings you want to use by selecting their checkboxes.
7. Click **OK**.

[Available Scanned File Types and Optional Settings](#)

Parent topic: [Selecting Epson Scan Settings](#)

Available Scanned File Types and Optional Settings

You can select from a variety scanned file types and optional settings on the File Save Settings window in Epson Scan.

File Formats

Bitmap (*.bmp)

A standard image file format for most Windows programs.

JPEG (*.jpg)

An image format that lets you highly compress image data. However, the higher the compression, the lower the image quality. (The Tiff format is recommended when you need to modify or retouch your scanned image.)

Multi-TIFF (*.tif)

A Tiff file format when multiple pages are saved to the same file, allowing you to edit the images using a compatible program.

PDF (*.pdf)

A document format that is readable by Windows and Mac OS X systems using Adobe Reader, Acrobat, or other programs. You can save multi-page documents in one PDF file.

PICT (*.pct)

A standard image file format for most Mac OS X programs.

PRINT Image Matching II (*.jpg or *.tif)

File formats that include Epson PRINT Image Matching II data for enhanced quality and a wider color range (does not affect the way the image displays on the screen).

TIFF (*.tif)

A file format created for exchanging data between many programs, such as graphic and DTP software.

Optional Settings**Overwrite any files with the same name**

Select to overwrite previous files with the same names.

Show this dialog box before next scan

Select to have the File Save Settings window appear automatically before you scan.

Open image folder after scanning

Select to have Windows Explorer or Mac OS X Finder automatically open to the folder where your scanned image is saved after scanning.

Show Add Page dialog after scanning

If you are scanning a multi-page document using the PDF or Multi-Tiff format, select to display a prompt for scanning additional pages after the first page is scanned.

Parent topic: [Selecting Scan File Settings](#)

Scanning Special Projects

Your product's scanning software offers various options to help you quickly complete special scan projects.

[Scanning to Facebook and Other Destinations](#)

[Restoring Photo Colors as You Scan](#)

[Removing Dust and Scratch Marks Using DIGITAL ICE Technology](#)

[Scanning to a PDF File](#)

[Scanning to a PDF File Using a Scanner Button](#)

[Convert Scanned Documents to Editable Text \(OCR\)](#)

[Using the Scanner as a Copier - Copy Utility](#)

[Scanning Directly to an Email](#)

Parent topic: [Scanning](#)

Scanning to Facebook and Other Destinations

You can scan original documents or photos and upload them to Facebook and other destinations, such as photo sharing sites, web servers, or network folders using the Easy Photo Scan software.

[Starting a Scan Using Easy Photo Scan](#)

[Uploading Scanned Images to Facebook](#)

[Uploading Scanned Images to Picasa](#)

[Uploading Scanned Images to Evernote](#)

[Uploading Scanned Images to SugarSync](#)

[Uploading Scanned Images to a Web Folder](#)

[Uploading Scanned Images to Email](#)

[Saving Scanned Images to a Folder](#)

[EPSON JPEG File Settings](#)


[EPSON TIFF and Multi-TIFF File Settings](#)

Parent topic: [Scanning Special Projects](#)

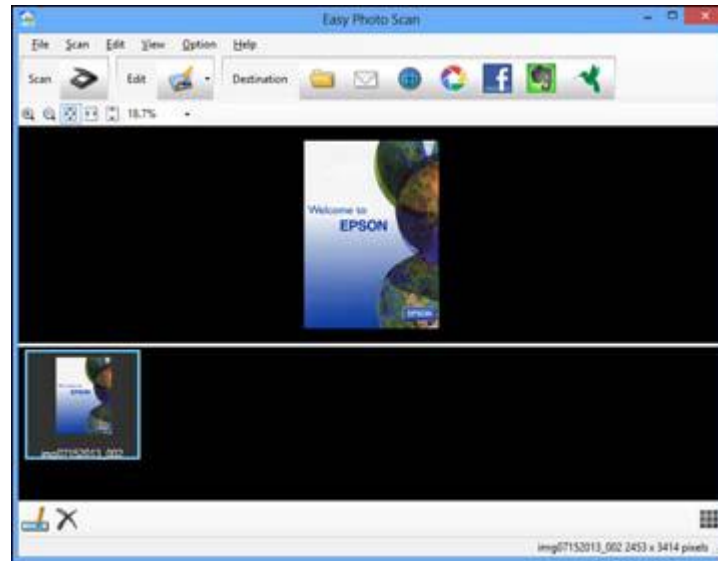
Starting a Scan Using Easy Photo Scan


You can use Epson Easy Photo Scan software to easily scan your originals using Epson Scan, edit the scanned images, and share them using Facebook or other photo sharing sites on the web.

Note: With Mac OS X 10.6, 10.7, or 10.8, in addition to scanning with Image Capture, you can download and install Epson Scan scanning software. Epson Scan provides additional image adjustment and photo correction features for enhancing scanned images, and provides an interface for TWAIN-compliant OCR scanning software, such as ABBYY FineReader. To download Epson Scan, visit Epson's driver download site ([U.S. downloads](#) or [Canadian downloads](#)).

1. Place the original on the scanner.
2. Do one of the following to open Easy Photo Scan:
 - **Windows 8:** Navigate to the **Start** screen, right-click the screen and select **All apps**. Click **Easy Photo Scan**.
 - **Windows (other versions):** Click  or **Start**, and select **All Programs** or **Programs**. Select **Epson Software**, then click **Easy Photo Scan**.
 - **Mac OS X:** Open the **Applications** folder, click **EPSON Software**, and click **Easy Photo Scan**.

You see a window like this:



3. Click the **Scan** button.
Epson Scan launches.
4. Click **Scan** on the Epson Scan window to scan your original.
The scanned image is displayed in the Easy Photo Scan window with an automatically generated name. You can edit the name of the file by selecting the image thumbnail at the bottom of the screen and clicking the  icon.
5. To edit the scanned image, click **Edit** and select one of the displayed options.

Note: See the Easy Photo Scan help for additional information on image editing options.
6. Repeat the above steps for each photo you want to upload.
Once you have scanned all of the photos you want to upload, click one of the destination icons.



Parent topic: [Scanning to Facebook and Other Destinations](#)

Related tasks

[Uploading Scanned Images to Facebook](#)

[Uploading Scanned Images to Picasa](#)

[Uploading Scanned Images to Evernote](#)

[Uploading Scanned Images to SugarSync](#)

[Uploading Scanned Images to a Web Folder](#)


[Uploading Scanned Images to Email](#)

[Saving Scanned Images to a Folder](#)

Uploading Scanned Images to Facebook

Note: If you have already configured a Facebook account in Easy Photo Scan, you can select a saved setting and click **Send** to upload your pictures.

To configure a Facebook account for use with Easy Photo Scan and upload your scanned images:

1. Click the  icon.

Note: You must have an image available to upload before you can click the destination icon.

The Transfer Settings dialog opens:



2. Click the **Login** button.

If you have previously configured Easy Photo Scan to use a Facebook account and saved your settings, make sure you select the entry in the **Setting Name** list.

3. On the Application Authentication screen, log in to your Facebook account.

Note: Make sure **Keep account logged in** is selected to enable automatic uploading of images.

4. Select an album from the **Album** list.
 - If you want to create a new album, you must create it directly in Facebook.
 - If you cannot select an album, make sure the Setting Name is set to **(No Selection)** and use the **Login** button to log in to your Facebook account, then try again.
 - If you do not select an album or use a saved setting, a new album called Easy Photo Scan will be created when the photos are uploaded.

5. Select the image format for the uploaded files using the **File** list. If there are options for the selected file format, click the **Options** button.
6. If you would like to save the images to a local folder in addition to uploading them, select the **Copy the image(s) to a local folder** option and click the **Browse** button to select a folder.
7. If you want to save the current settings, click the **Edit** button next to the Setting Name and choose **Save As**. Enter a name for the setting and click **OK**.
8. Click **Send** to upload the images to your Facebook account, or **Cancel** to cancel the operation.

Once you have configured an account, you can just select the saved setting and click **Send** to upload your new scanned images.

Parent topic: [Scanning to Facebook and Other Destinations](#)


Related references

[EPSON JPEG File Settings](#)

Uploading Scanned Images to Picasa

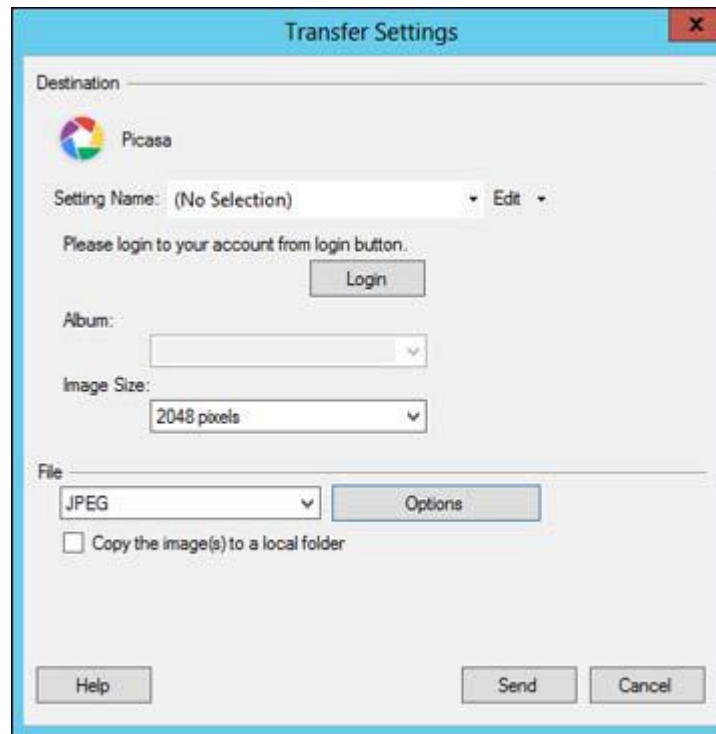
Note: If you have already configured a Picasa account in Easy Photo Scan, you can select a saved setting and click **Send** to upload your pictures.

To configure a Picasa account for use with Easy Photo Scan and upload your scanned images:

1. Click the  icon.

Note: You must have an image available to upload before you can click the destination icon.

The Transfer Settings dialog opens:



2. Click the **Login** button.
If you have previously configured Easy Photo Scan to use a Picasa account and saved your settings, make sure you select the entry in the **Setting Name** list.
3. On the Application Authentication screen, log in to your Google account.
4. Click **Accept** to allow Easy Photo Scan to upload images to your account.
An authentication code is generated.
5. Copy the authentication code into the **Please enter authentication code** field and click **OK**.
6. Select an album using the **Album** drop-down list.
If you want to create a new album, you must create it directly in Picasa. If you cannot select an album, use the **Login** button to log in to your Picasa account, then try again.
7. Select an **Image Size** for the uploaded images.

8. Select the image format for the uploaded files using the **File** selector. If there are options for the selected file format, click the **Options** button.
9. If you would like to save the images to a local folder in addition to uploading them, select the **Copy the image(s) to a local folder** option and click the **Browse** button to select a folder.
10. If you want to save the current settings, click the **Edit** button next to the Setting Name and choose **Save As**. Enter a name for the setting and click **OK**.
11. Click **Send** to upload the images to your Picasa account, or **Cancel** to cancel the operation.

Once you have configured an account, you can just select the saved setting and click **Send** to upload your new scanned images.

Parent topic: [Scanning to Facebook and Other Destinations](#)


Related references

[EPSON JPEG File Settings](#)

Uploading Scanned Images to Evernote

Note: If you have already configured an Evernote account in Easy Photo Scan, you can select the saved setting and click **Send** to upload your pictures.

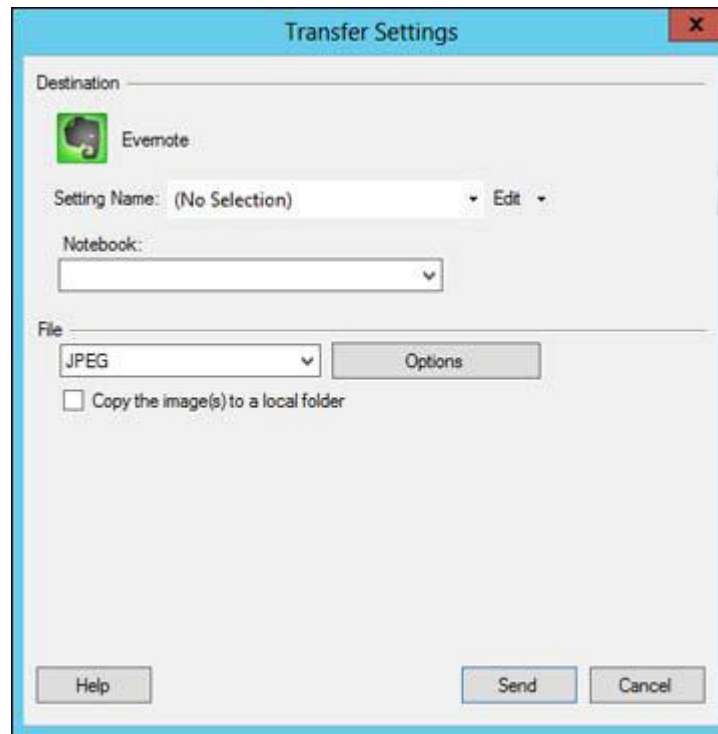
To configure an Evernote account for use with Easy Photo Scan and upload your scanned images:

1. Click the  icon.

Note: You must have an image available to upload before you can click the destination icon.

Note: You must have Evernote installed on your computer.

The Transfer Settings dialog opens:



2. Select a notebook using the **Notebook** drop-down list. If you want to create a new notebook, you must create it directly in Evernote.
 3. Select the image format for the uploaded files using the **File** selector. If there are options for the selected file format, click the **Options** button.
 4. If you would like to save the images to a local folder in addition to uploading them, select the **Copy the image(s) to a local folder** option and click the **Browse** button to select a folder.
 5. If you want to save the current settings, click the **Edit** button next to the Setting Name and choose **Save As**. Enter a name for the setting and click **OK**.
 6. Click **Send** to upload the images to your Evernote account, or **Cancel** to cancel the operation.
- Once you have configured an account, you can just select the saved setting and click **Send** to upload your new scanned images.

Parent topic: [Scanning to Facebook and Other Destinations](#)


Related references

[EPSON JPEG File Settings](#)

Uploading Scanned Images to SugarSync

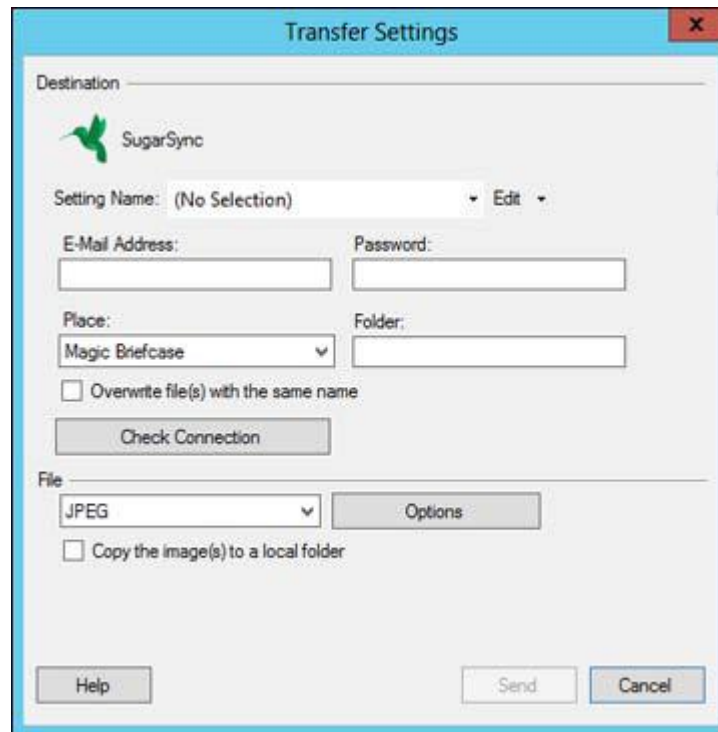
Note: If you have already configured a SugarSync account in Easy Photo Scan, you can select the **Setting Name** for the account and click **Send** to upload your pictures.

To configure a SugarSync account for use with Easy Photo Scan and upload your scanned images:

1. Click the  icon.

Note: You must have an image available to upload before you can click the destination icon.

The Transfer Settings dialog opens:



The image shows a 'Transfer Settings' dialog box with a blue title bar and a red close button. The dialog is divided into several sections:

- Destination:** Features the SugarSync logo and a dropdown menu for 'Setting Name' currently set to '(No Selection)'. There is an 'Edit' button next to the dropdown.
- Authentication:** Includes 'E-Mail Address:' and 'Password:' text labels with corresponding input fields.
- Location:** Includes 'Place:' and 'Folder:' text labels. 'Place' has a dropdown menu set to 'Magic Briefcase', and 'Folder' has an empty input field.
- Options:** A checkbox labeled 'Overwrite file(s) with the same name' is currently unchecked.
- Buttons:** A 'Check Connection' button is located below the 'Overwrite' checkbox.
- File:** A dropdown menu is set to 'JPEG', with an 'Options' button to its right.
- Final Options:** A checkbox labeled 'Copy the image(s) to a local folder' is currently unchecked.
- Footer:** Contains three buttons: 'Help', 'Send', and 'Cancel'.

2. Enter the account information in the **E-Mail Address** and **Password** fields.
If you have previously configured Easy Photo Scan to use a SugarSync account and saved your settings, make sure you select the entry in the **Setting Name** list.

3. Select a Place for the uploaded images.

Note: In SugarSync, the Magic Briefcase is now called "My SugarSync". Uploads to the Magic Briefcase will appear in the My SugarSync folder.

4. Enter a folder name in the **Folder** field.
 - If you enter the name of an existing folder, the images will be uploaded into that folder.
 - If the folder does not exist, a new folder with that name will be created.
5. If you want to replace existing files with the same name with the uploaded images, click the **Overwrite file(s) with the same name** checkbox.
6. Click **Check Connection** to test whether the SugarSync account information is correct.
7. Select the image format for the uploaded files using the **File** selector. If there are options for the selected file format, click the **Options** button.
8. If you would like to save the images to a local folder in addition to uploading them, select the **Copy the image(s) to a local folder** option and click the **Browse** button to select a folder.
9. If you want to save the current settings, click the **Edit** button next to the Setting Name and choose **Save As**. Enter a name for the setting and click **OK**.
10. Click **Send** to upload the images to your SugarSync account, or **Cancel** to cancel the operation.

Once you have configured an account, you can just select the saved setting and click **Send** to upload your new scanned images.

Parent topic: [Scanning to Facebook and Other Destinations](#)


Related references

[EPSON JPEG File Settings](#)

[EPSON TIFF and Multi-TIFF File Settings](#)

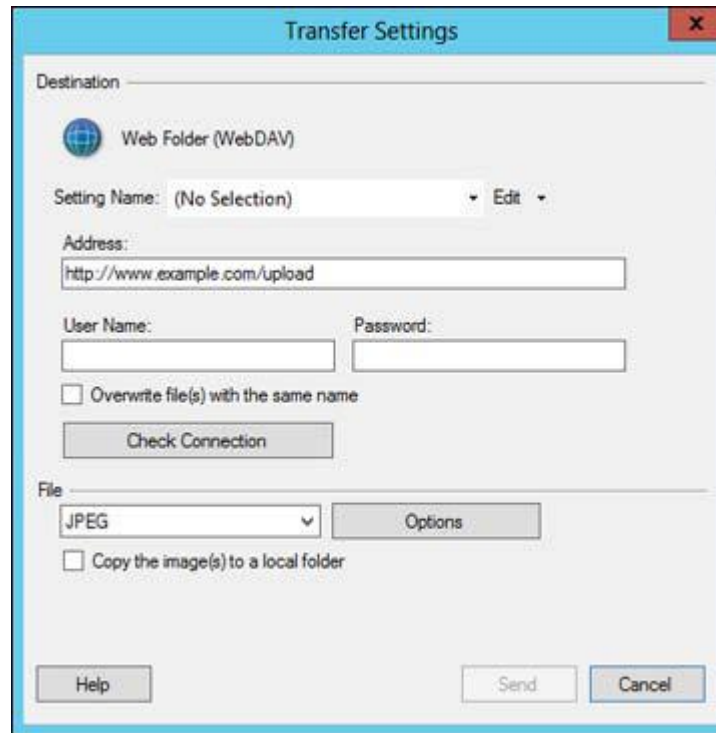
Uploading Scanned Images to a Web Folder

To upload your scanned images to a Web Folder (WebDAV):

1. Click the  icon.

Note: You must have an image available to upload before you can click the destination icon.

The Transfer Settings dialog opens:



2. Enter the Web Folder URL in the **Address** field.
3. Enter the login information in the **User Name** and **Password** fields.
If you have previously configured Easy Photo Scan with a Web Folder destination and saved your settings, make sure you select the entry in the **Setting Name** list.
4. If you want to replace existing files with the same name with the uploaded images, click the **Overwrite file(s) with the same name** checkbox.
5. Click **Check Connection** to test whether the account information is correct.
6. Select the image format for the uploaded files using the **File** selector. If there are options for the selected file format, click the **Options** button.
7. If you would like to save the images to a local folder in addition to uploading them, select the **Copy the image(s) to a local folder** option and click the **Browse** button to select a folder.

8. If you want to save the current settings, click the **Edit** button next to the Setting Name and choose **Save As**. Enter a name for the setting and click **OK**.
9. Click **Send** to upload the images to your Web Folder, or **Cancel** to cancel the operation.

Once you have configured an account, you can just select the saved setting and click **Send** to upload your new scanned images.

Parent topic: [Scanning to Facebook and Other Destinations](#)

Related references

[EPSON JPEG File Settings](#)

[EPSON TIFF and Multi-TIFF File Settings](#)

Uploading Scanned Images to Email

Note: The following email software is supported by Easy Photo Scan.

- Microsoft Outlook 2000/2002/2003/2007/2010 (x86)/2013 (x86)
- Windows Mail/Windows Live Mail

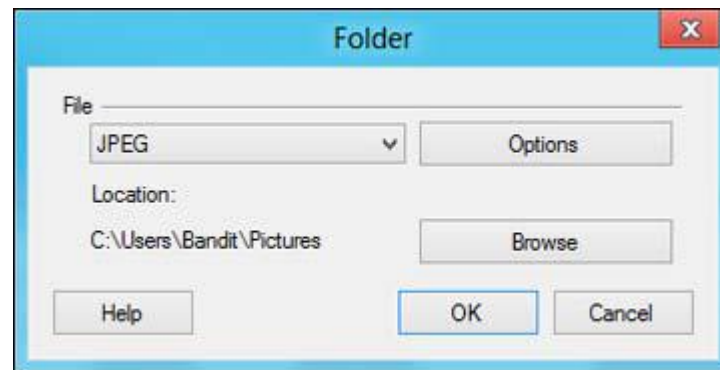
If you do not have a supported email application installed, the images will be saved in the selected directory, but the email program will not open.

To save your scanned images to a local network folder and send them by email:

1. Click the  icon.

Note: You must have an image available to upload before you can click the destination icon.

The Folder dialog opens:



2. Select the image format for the saved files using the **File** selector. If there are options for the selected file format, click the **Options** button.
3. Click the **Browse** button to choose the folder where the images will be saved.
4. Click **OK** to save the images to the folder and launch the email program, or **Cancel** to cancel the operation.

Parent topic: [Scanning to Facebook and Other Destinations](#)

Related references

[EPSON JPEG File Settings](#)

[EPSON TIFF and Multi-TIFF File Settings](#)

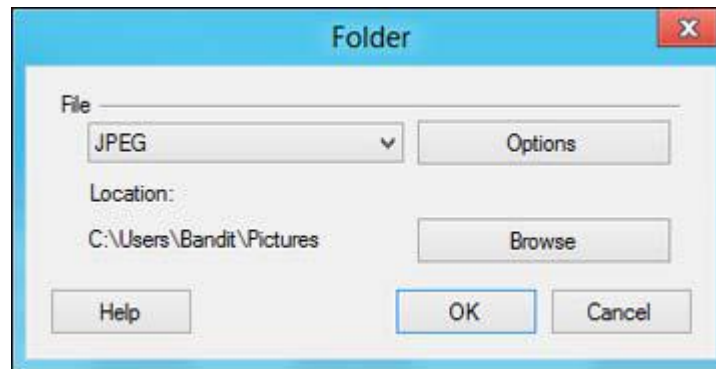
Saving Scanned Images to a Folder

To save your scanned images to a local network folder:

1. Click the  icon.

Note: You must have an image available to upload before you can click the destination icon.

The Folder dialog opens:



2. Select the image format for the saved files using the **File** selector. If there are options for the selected file format, click the **Options** button.
3. Click the **Browse** button to choose the folder where the images will be saved.
4. Click **OK** to save the images to the folder, or **Cancel** to cancel the operation.

Parent topic: [Scanning to Facebook and Other Destinations](#)

Related references

[EPSON JPEG File Settings](#)

[EPSON TIFF and Multi-TIFF File Settings](#)

EPSON JPEG File Settings

You can select from the following optional settings on the EPSON JPEG Plug-in Settings window in Easy Photo Scan.

Setting	Description
Image Quality Options	Specifies the compression level for JPEG images. The file size increases with higher quality.
Encoding	Specifies the encoding method. Standard: Images are rendered from the top to the bottom when displayed on a web browser. Progressive: Images are rendered in low resolution in a web browser, then replaced with a higher resolution.
Embed ICC Profile	Allows the ICC profile (information on color reproducibility of scanned image) to be embedded in the image. Programs that use color management software will display the colors of the image using the ICC profile.

Parent topic: [Scanning to Facebook and Other Destinations](#)

EPSON TIFF and Multi-TIFF File Settings

You can select from the following optional settings on the EPSON TIFF Plug-in Settings and EPSON Multi-TIFF Plug-in Settings windows in Easy Photo Scan.

Setting	Description
Byte Order	Selects the operating system that will use the scanned image.

Setting	Description
Compression	Specifies the compression format. The available options differ depending on the file format. JPEG(7) / LZW: Available when the Image Type is Color or Grayscale. CCITT Group4: Compresses the data by approximately a 20/1 ratio (depending on the image).
Embed ICC Profile	Allows the ICC profile (information on color reproducibility of scanned image) to be embedded in the image. Programs that use color management software will display the colors of the image using the ICC profile.

Parent topic: [Scanning to Facebook and Other Destinations](#)

Restoring Photo Colors as You Scan

You can restore the colors in faded photos as you scan them using Epson Scan's Color Restoration setting. You can select this setting in any of the available scan modes.

Note: Color restoration is not available in Office Mode, if Epson Scan offers that mode.

1. Place your original on your product for scanning.
2. Start Epson Scan.
3. Select the scan mode you want to use.
4. Select the scan settings for your scan.
5. Preview your image.
6. Locate or access the image adjustment settings.
7. Select the **Color Restoration** checkbox.



8. When you finish selecting all your settings, click **Scan**.
9. Click **Close** to exit the Epson Scan window, if necessary.

Epson Scan scans your original, and saves the color-restored file in the selected folder or opens it in your scanning program. If the file was saved directly to your computer, you see the file in the Windows Explorer or Mac OS X Finder, where you can view and print the image, if desired.

Parent topic: [Scanning Special Projects](#)

Related tasks

[Scanning in Full Auto Mode](#)

[Scanning in Home Mode](#)

[Scanning in Office Mode](#)

[Scanning in Professional Mode](#)

Removing Dust and Scratch Marks Using DIGITAL ICE Technology

You can remove stubborn dust and scratch marks as you scan your originals using Epson Scan's DIGITAL ICE Technology setting. You can select this setting in Home and Professional mode.

DIGITAL ICE Technology removes dust marks that the Dust Removal setting cannot. However, it takes longer to scan and uses more system resources. It is best to first try removing dust marks using the Dust Removal setting before trying the DIGITAL ICE Technology setting; you cannot select both at the same time.

Note: Do not use the DIGITAL ICE Technology setting to scan originals that do not contain dust or scratch marks; your scanned images may appear distorted. Images scanned with DIGITAL ICE Technology may appear softer than your original images.

1. Make sure your system and your original meet the requirements to use DIGITAL ICE Technology.
2. Place your original on your scanner.
3. Start Epson Scan.
4. Select the scan mode you want to use.
5. Select the scan settings for your scan.
6. Preview your image.
7. Locate or access the image adjustment settings.

8. Select the **DIGITAL ICE Technology** checkbox.

 DIGITAL ICE Technology

9. When you finish selecting all your settings, click **Scan**.
10. Click **Close** to exit the Epson Scan window, if necessary.

Epson Scan scans your original, and saves the scanned file in the selected folder or opens it in your scanning program. If the file was saved directly to your computer, you see the file in the Windows Explorer or Mac OS X Finder, where you can view and print the image, if desired.

[DIGITAL ICE Technology Specifications](#)

Parent topic: [Scanning Special Projects](#)

Related tasks

[Scanning in Full Auto Mode](#)

[Scanning in Home Mode](#)

[Scanning in Office Mode](#)

[Scanning in Professional Mode](#)

DIGITAL ICE Technology Specifications

To use DIGITAL ICE Technology, your system must meet the requirements listed here. Additional resources may be needed to process and store your scanned images at the specified sizes and resolutions.

Original Types

- Color negative film
- Color positive film and slides (except for Kodachrome)
- Chromogenic monochrome negative film

System Resources

Original type	Resolution*	Hard disk space	System memory
35 mm film or slides	150 dpi	1MB	8MB
	300 dpi	1MB	15MB
	600 dpi	4MB	30MB
	1200 dpi	16MB	59MB
	2400 dpi	63MB	117MB
	3600 dpi	142MB	175MB
	12800 dpi	251MB	233MB
Medium format film	150 dpi	4MB	34MB
	300 dpi	8MB	70MB
	600 dpi	29MB	139MB
	1200 dpi	116MB	277MB
	2400 dpi	464MB	553MB
	3600 dpi	1042MB	830MB
	12800 dpi	1853MB	1106MB

* The resolutions listed here are the higher resolutions used by DIGITAL ICE Technology, and are higher than the resolutions you can select in Epson Scan.

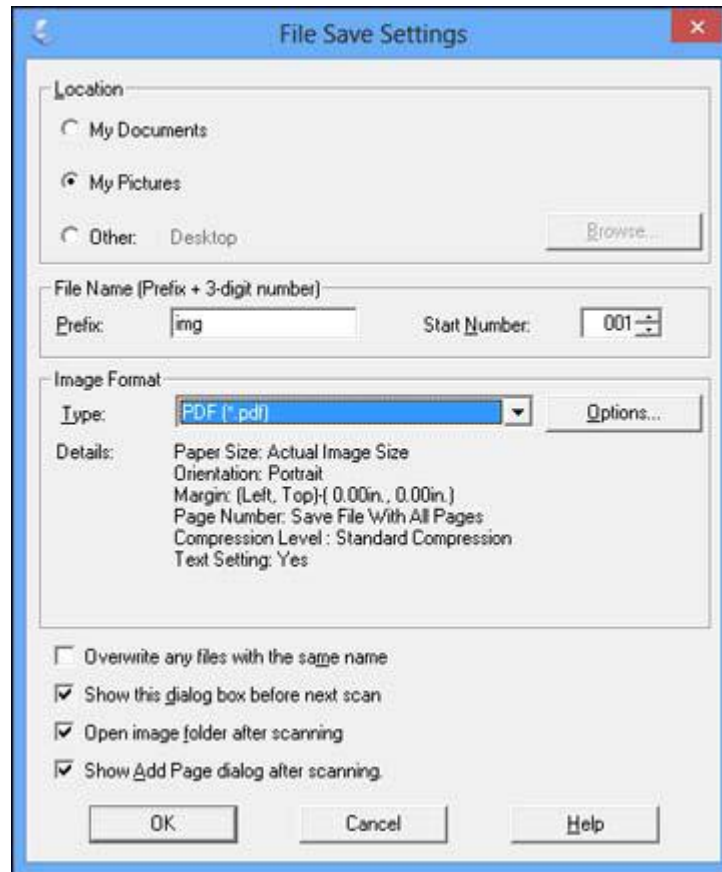
Parent topic: [Removing Dust and Scratch Marks Using DIGITAL ICE Technology](#)

Scanning to a PDF File

Using Epson Scan, you can scan a multi-page document and save it in one PDF (Portable Document Format) file on your computer.

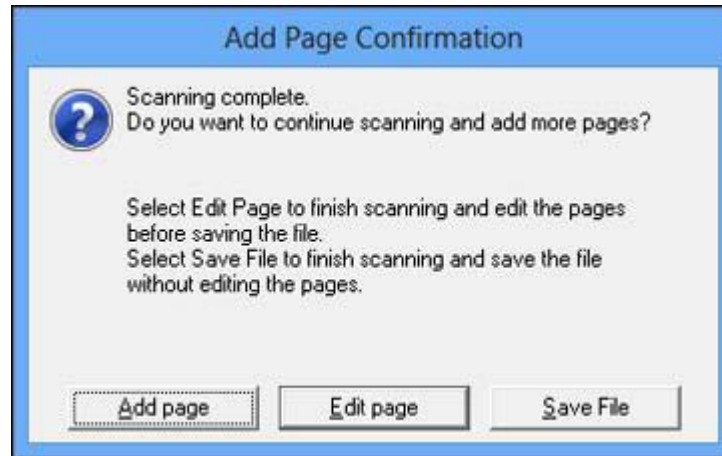
1. Place your original on your product for scanning.
2. Start Epson Scan.
3. Select the scan mode you want to use.
4. Select the scan settings for your scan.
5. Preview your image.

- When you finish selecting all your settings, click **Scan**.
You see the File Save Settings window.



- Select **PDF** as the Type setting.
- Select any other settings you want to use on the File Save Settings window. Click the **Options** button to access additional settings.
- Click **OK**.

Epson Scan scans your document and you see this window:



10. Choose one of the following options on the screen:

- If you are scanning only one page, click **Save File**.
- If you need to scan additional pages in a document, click **Add page**. Place additional pages on the product for scanning, click **Scan**, and repeat until you have scanned all the pages. When you are finished, click **Save File**.
- If you need to delete or reorder the scanned pages, click **Edit page**. Delete or reorder the pages using the icons that appear on the bottom of the editing window. When you are finished, click **OK**.


Note: If you installed an OCR (Optical Character Recognition) program, you may see a screen indicating the program is converting your page to text. Wait until the program re-scans the page and close the program, if necessary.

11. Click **Close** to exit the Epson Scan window, if necessary.

Epson Scan scans your original, and saves the PDF file in the selected folder or opens it in your scanning program. If the file was saved directly to your computer, you see the file in the Windows Explorer or Mac OS X Finder, where you can view and print the document, if desired.


Parent topic: [Scanning Special Projects](#)

Scanning to a PDF File Using a Scanner Button

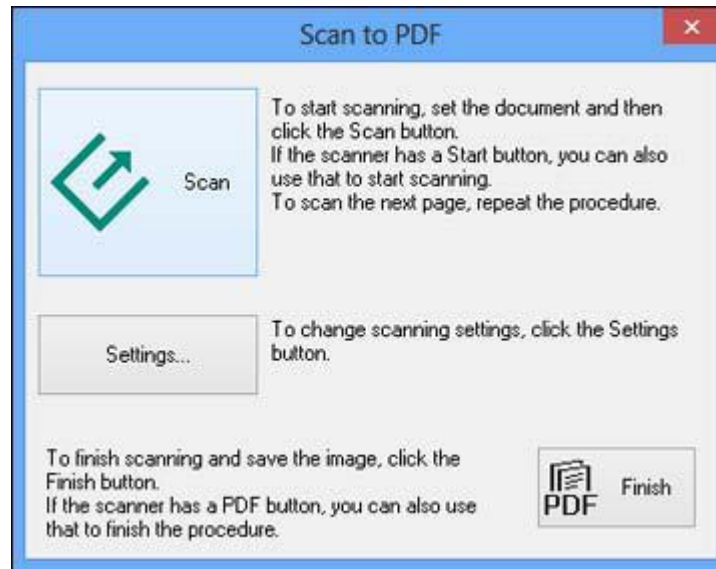
You can scan to a PDF (Portable Document Format) file by pressing the  PDF button on your scanner.

You can select the following options as you scan to PDF:

- Scan multiple pages to one PDF file
- Scan multiple pages to multiple PDF files
- Create a searchable PDF file (available only if ABBYY FineReader is installed)

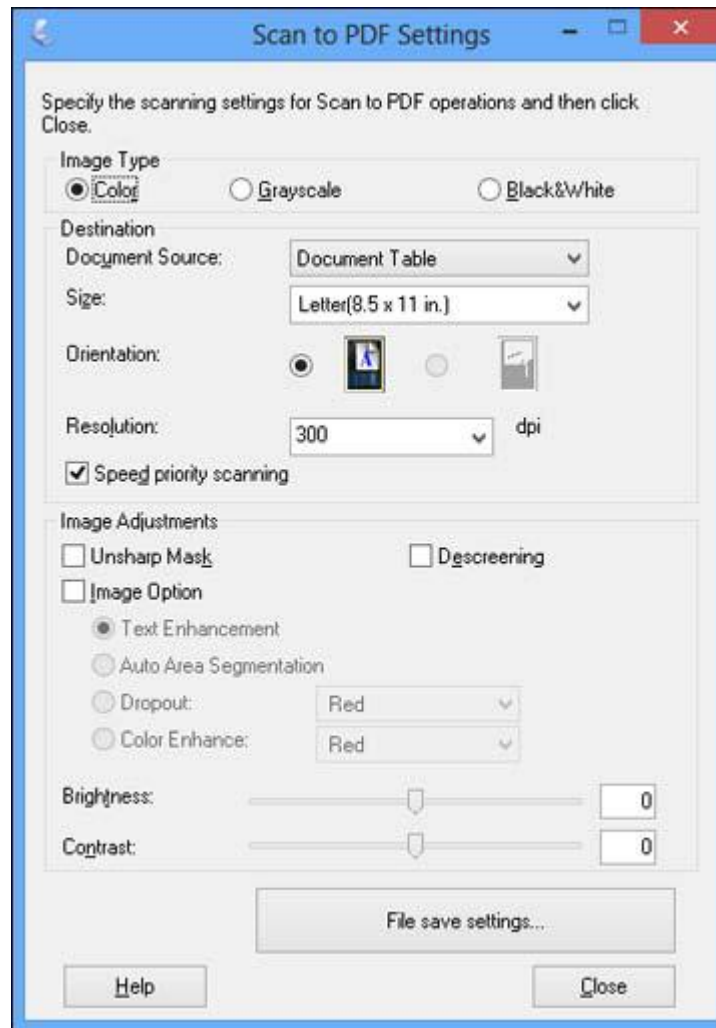
1. Place your original on your product for scanning.
2. Press the  PDF button on your scanner.

You see this window:



3. Click **Settings**.

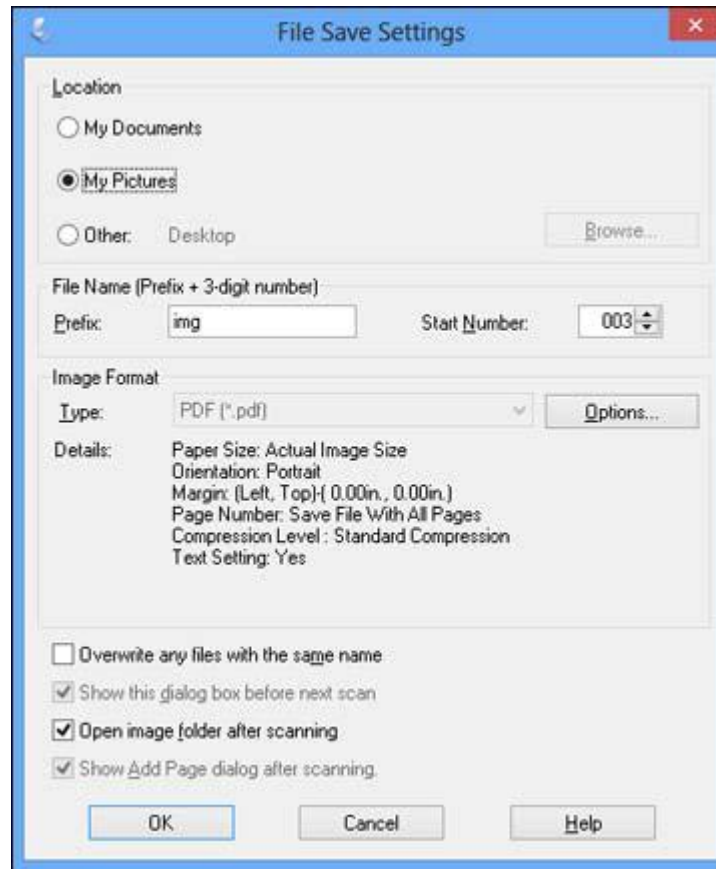
You see this window:



4. Select the **Image Type** setting for the type of original you are scanning.
5. Select **Document Table** as the Document Source setting.
6. Select the **Size**, **Orientation**, and **Resolution** settings for your scan.
7. Make sure **Speed Priority Scanning** is selected for faster scans.
8. Select any of the available Image Adjustments settings.

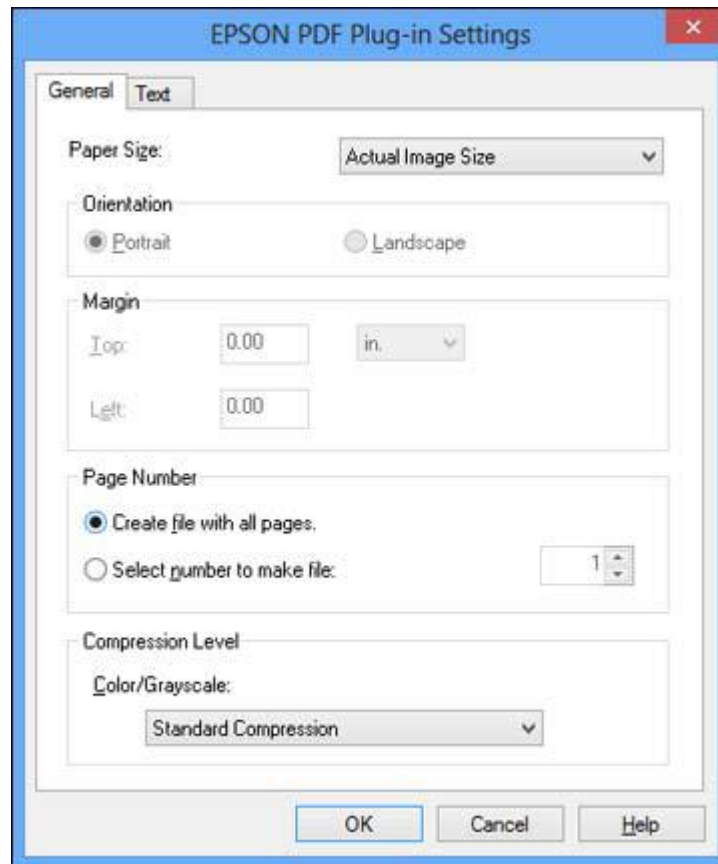
9. Click **File save settings**.

You see this window:



10. To change any of the displayed PDF Image Format settings, click the **Options** button.

You see this window:



11. Select one of the following options on the General tab to indicate the number of PDF files you want to create:
- To create one PDF file of all the scanned pages, select **Create file with all pages.**
 - To create multiple PDF files of groups of scanned pages, select **Select number to make file.** Enter the number of pages you want in each file in the number field. For example, with a 20-page original, enter **4** to create 5 PDF files of 4 pages each.

Note: The Text tab appears only if ABBYY FineReader is installed. To create a searchable PDF file, select **Create searchable PDF** and select the language of the original document.

12. Click **OK**.
13. Click **Close** to close the Scan to PDF Settings window.
14. Click the large **Scan** button.
Epson Scan scans your page.
15. Choose one of the following options on the screen:
 - If you are scanning only one page, click **Finish**.
 - If you need to scan additional pages in a document, place additional pages on the product for scanning, click **Scan**, and repeat until you have scanned all the pages. When you are finished, click **Finish**.

Epson Scan saves the files in the selected folder.

[Available Image Adjustments - Scan to PDF Settings](#)

Parent topic: [Scanning Special Projects](#)

Available Image Adjustments - Scan to PDF Settings

You can select these Adjustments options in the Scan to PDF Settings window.

Note: Not all adjustment settings may be available, depending on the Image Type setting.

Select the **Image Option** checkbox to access additional settings.

Unsharp Mask

Makes the edges of certain image areas clearer. Turn off this option to leave softer edges.

Descreening

Removes the ripple pattern that might appear in subtly shaded image areas, such as skin tones. This option improves results when scanning magazines or newspapers. (The results of descreening do not appear in the preview image, only in your scanned image.)

Brightness

Adjusts the overall lightness and darkness of the scanned image.

Contrast

Adjusts the difference between the light and dark areas of the overall scanned image.

Text Enhancement

Sharpens the appearance of letters in text documents.

Auto Area Segmentation

Makes grayscale images clearer and text recognition more accurate by separating the text from the graphics.

Dropout

The scan will not pick up the color you select. This setting is only available if you select an **Image Type** of **Grayscale** or **Black & White**.

Color Enhance

Enhances the red, green, or blue shades in the scanned image.

Threshold

Adjusts the level at which black areas in text and line art are delineated, improving text recognition in OCR (Optical Character Recognition) programs.

Parent topic: [Scanning to a PDF File Using a Scanner Button](#)

Convert Scanned Documents to Editable Text (OCR)

You can scan a document and convert the text into data that you can edit with a word processing, spreadsheet, or HTML-editing program. This process is called OCR (Optical Character Recognition).

To scan and use OCR, you need to install an OCR program, such as ABBYY FineReader.

In Mac OS X 10.6/10.7/10.8, you can use ABBYY FineReader to convert scanned documents to editable text by first using an application such as Image Capture. Scan and save your document in Image Capture, then open ABBYY FineReader, open the **Get Images From** pop-up menu, and select **File**. Select the conversion option you want to use, then select your scanned file and follow the instructions on the screen.

Note: With Mac OS X 10.6, 10.7, or 10.8, in addition to scanning with Image Capture, you can download and install Epson Scan scanning software. Epson Scan provides additional image adjustment and photo correction features for enhancing scanned images, and provides an interface for TWAIN-compliant OCR scanning software, such as ABBYY FineReader. To download Epson Scan, visit Epson's driver download site ([U.S. downloads](#) or [Canadian downloads](#)).

[Scanning Using OCR - Windows](#)

[Scanning Using OCR - Mac OS X](#)

Parent topic: [Scanning Special Projects](#)

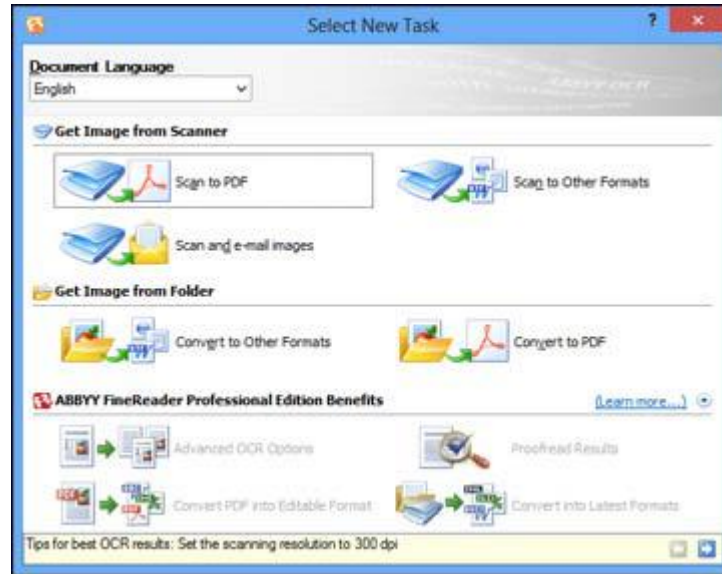
Scanning Using OCR - Windows

You can use the ABBYY FineReader OCR program to convert scanned documents to editable text.

1. Place your original on your product for scanning.
2. Do one of the following to open ABBYY FineReader:
 - **Windows 8:** Navigate to the **Start** screen and select **ABBYY FineReader 9.0 Sprint**.

- **Windows (other versions):** Click  or **Start > All Programs** or **Programs > ABBYY FineReader 9.0 Sprint > ABBYY FineReader 9.0 Sprint.**

You see this window:



3. Select the language used in the document you are going to scan as the **Document Language** setting.
4. Click either the **Scan to Other Formats** icon or the icon that corresponds with the program you want to scan to.
5. If you see the Select Scanner window, select your product and click **OK**.

Note: Do not select a **WIA** option for your product; it will not work correctly.

You see the scan settings window.

6. Select your scan settings.
7. Click **Preview** and adjust the area you want to scan, if necessary.

8. Click **Scan**.

Note: To scan a multi-page document, select settings in the Multi-Page Scanning section and click **Scan** for each page.

9. When you are finished scanning, click **Close**.

Your document is scanned and processed into editable text, then you see the Save As window.

10. Select a name and a file format for your document and click **Save**.

The file is saved and then opened in an application associated with the file type you selected, if available on your system.

Parent topic: [Convert Scanned Documents to Editable Text \(OCR\)](#)

Scanning Using OCR - Mac OS X

You can use the ABBYY FineReader OCR program to convert scanned documents to editable text.

In Mac OS X 10.6/10.7/10.8, you can use ABBYY FineReader to convert scanned documents to editable text by first using an application such as Image Capture. Scan and save your document in Image Capture, then open ABBYY FineReader, open the **Get Images From** pop-up menu, and select **File**. Select the conversion option you want to use, then select your scanned file and follow the instructions on the screen.

Note: With Mac OS X 10.6, 10.7, or 10.8, in addition to scanning with Image Capture, you can download and install Epson Scan scanning software. Epson Scan provides additional image adjustment and photo correction features for enhancing scanned images, and provides an interface for TWAIN-compliant OCR scanning software, such as ABBYY FineReader. To download Epson Scan, visit Epson's driver download site ([U.S. downloads](#) or [Canadian downloads](#)).

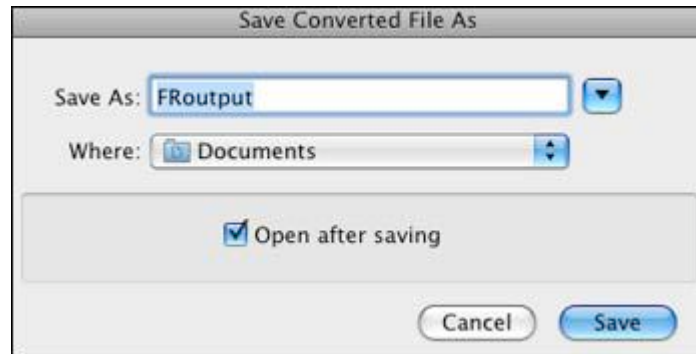
1. Place your original on your product for scanning.
2. Open the **Applications** folder and click the **ABBYY FineReader Sprint** icon.

You see this window:



3. Open the **Get Images From** pop-up menu and select your product.
4. Select the language used in the document you are going to scan as the **Document Language** setting.
5. Select the type of document you are going to scan.
Epson Scan starts in the last scan mode you used.
6. Select your scan settings and click **Scan**.
Your document is scanned and you see the Epson Scan window while your document is converted to editable text.
7. Click **Close** to close the Epson Scan window and Preview window, if necessary.

You see the Save Converted File As window:





8. Click the **Save** button.

The file is saved and then opened in an application associated with the file type you selected, if available on your system.

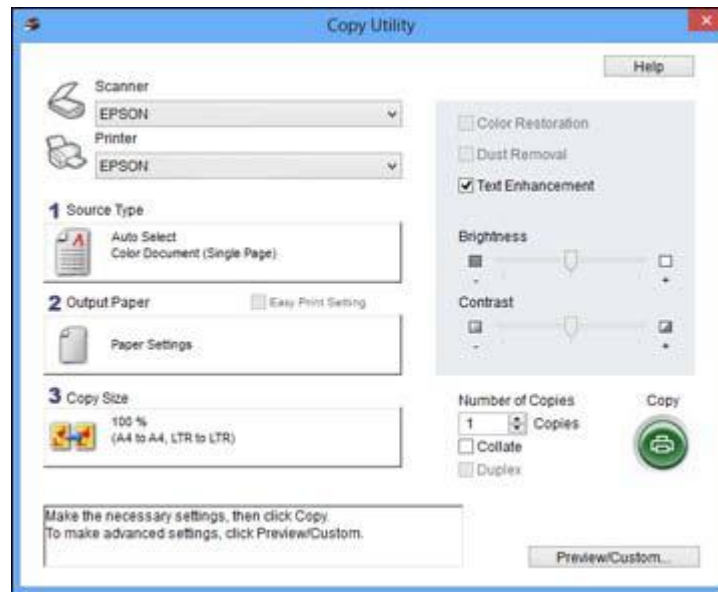
Parent topic: [Convert Scanned Documents to Editable Text \(OCR\)](#)

Using the Scanner as a Copier - Copy Utility

You can use your scanner along with a printer connected to your computer just like you would use a copy machine. Using the Copy Utility, you can enlarge or reduce, restore faded colors, and adjust a variety of other settings as you copy.

1. Do one of the following to start the Copy Utility:
 - Press the  copy button on your scanner.
 - **Windows 8:** Navigate to the **Start** screen, right-click the screen, and select **All apps**. Select **Copy Utility**.
 - **Windows (other versions):** Click  or **Start**, select **All Programs** or **Programs**, select **Epson Software**, and select **Copy Utility**.
 - **Mac OS X:** Open the **Applications** folder, select the **Epson Software** folder, and select **Copy Utility**.

You see this window:



2. Select your scanner from the **Scanner** list.
3. Select your printer from the **Printer** list.
4. Click the **Source Type** box, select the type of original you are copying, and click **OK**.
5. Click the **Output Paper** box, select the type and size of paper you loaded in your printer, and click **OK**.

Note: When printing from certain Epson printers, you may see the printer settings window. See your printer documentation for instructions on selecting settings.

6. To reduce or enlarge as you copy, click the **Copy Size** box, select the option you want, and click **OK**.

Note: When printing from certain Epson printers, you may also see options for borderless printing.

7. Depending on the selected **Source Type** setting, you may select additional copy options on the right side of the window.
8. To create multiple copies, select the number as the **Copies** setting.

9. Do one of the following to start copying:
 - Click the **Copy** button.
 - To preview your scan before printing or select additional copy settings, click **Preview/Custom**. (Click the **Help** button for instructions on selecting custom copy settings.)

[Source Type Settings - Copy Utility](#)

Parent topic: [Scanning Special Projects](#)

Source Type Settings - Copy Utility

You can select these **Source Type** setting options in the Copy Utility.

Color Document (Single Page)

For one-page color documents containing text and graphics, such as a flyer.

Black & White Document (Single Page)

For one-page black-and-white documents containing text and graphics, such as a letter.

Color Document (Multiple Pages)

For multi-page color documents containing text and graphics, such as a brochure.

Black & White Document (Multiple Pages)

For multi-page black-and-white documents containing text and graphics, such as a manual.

Photo

For color or black-and-white photographs.

Negative Film

For color negative film strips.

Positive Film


For color positive slides or film strips.

Parent topic: [Using the Scanner as a Copier - Copy Utility](#)

Scanning Directly to an Email

You can scan and automatically attach the scanned image file to an email message.

Note: You must install a MAPI-type email program such as Outlook Express, Windows Live Mail, Entourage, or Mac Mail. Web-based email services such as Gmail are not supported. If you do not have a supported email program, you see an error message.

1. Press the  email button on your scanner.

Epson Scan starts in Full Auto Mode, scans your original, and saves it as a JPEG file. You see the Send File Via Email window.

Note: To select different scan settings, or a different Epson Scan mode, click the **Pause** button displayed on the screen.

2. Select the email program you use in the **Select E-mail Application** list.
3. To resize your scanned image, select a size under **Select Photo Size**.
4. Click **OK**.

Your email program opens and your scanned image is attached to a new email message.

Parent topic: [Scanning Special Projects](#)

Cleaning and Transporting Your Scanner


See these sections if you need to clean or transport your scanner.

[Cleaning Your Scanner](#)

[Transporting Your Scanner](#)

Cleaning Your Scanner

To keep your product working at its best, you should clean it several times a year.

1. Turn off the scanner using the  power button.
2. Unplug the AC power cord.
3. Disconnect the USB cable.
4. Clean the outer case with a cloth dampened with mild detergent and water.
5. If the scanner glass gets dirty, clean it with a soft dry cloth. If the glass surface is stained with grease or some other hard-to-remove material, use a small amount of glass cleaner on a soft cloth to remove it. Wipe off all remaining liquid.

Note: Do not spray glass cleaner directly on the scanner glass.


6. Remove the document mat and clean the transparency unit window in the same manner as the scanner glass.

Make sure that no dust builds up on the surface of the scanner glass or transparency unit window. Dust can cause spots in your scanned images.

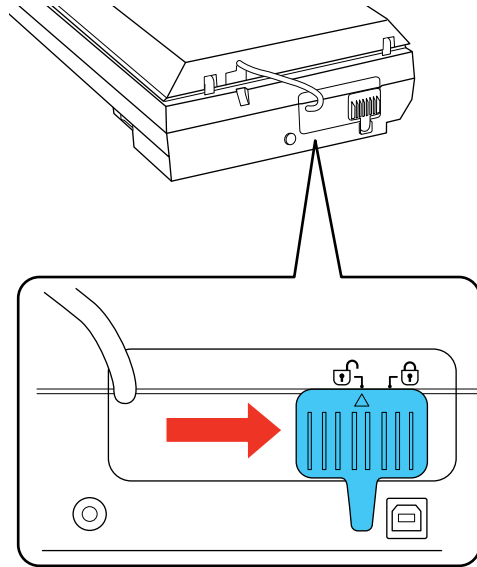
Parent topic: [Cleaning and Transporting Your Scanner](#)

Transporting Your Scanner

If you need to ship your product, transport it a long distance, or stored it for an extended period, prepare it for transportation as described here.

1. Make sure the carriage is in the home position on the upper side of the scanner. If the carriage is not in the home position, turn on the scanner and wait until the carriage moves to the home position.
2. Turn off the scanner using the  power button, then unplug the AC power cord.
3. Disconnect the USB cable from the scanner.

4. Slide the transportation lock to the locked position to secure the scanner carriage.



5. Place the scanner in its original packing materials if possible, or use equivalent materials with cushioning around the scanner.

Parent topic: [Cleaning and Transporting Your Scanner](#)

Solving Problems

Check these sections for solutions to problems you may have using your product.

[Scanner Light Status](#)

[Solving Scanning Problems](#)

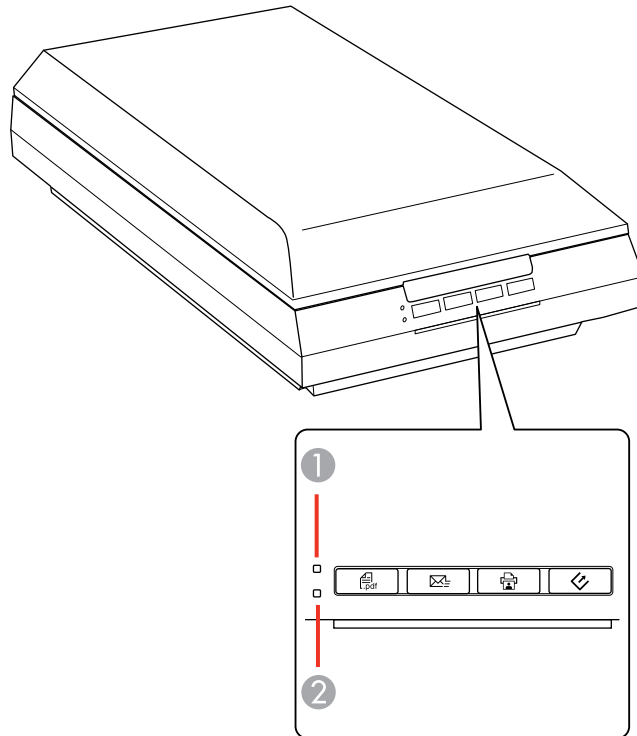
[Solving Scanned Image Quality Problems](#)

[When to Uninstall Your Scanner Software](#)

[Where to Get Help](#)

Scanner Light Status

You can often diagnose problems with your scanner by checking its lights.



Lights

1	Ready
2	Error

Light status	Condition/solution
The Ready light is on	The scanner is turned on and ready to scan.
The Ready light is flashing	The scanner is scanning or initializing. Wait for the Ready light to stop flashing before turning off the scanner.
The Error light is flashing	An error has occurred. Try the following: <ul style="list-style-type: none">• Check the scanner connection to your computer to make sure it is secure.• Make sure your scanning software is installed correctly.• If the Error light is still flashing, turn off the scanner, then turn it on again. If the error continues, the scanner may be malfunctioning. Contact Epson for support.
All scanner lights are off	The scanner is turned off.

Parent topic: [Solving Problems](#)

Solving Scanning Problems

Check these solutions if you have problems scanning with your product.

[Scanner Does Not Turn On or Turns Off Unexpectedly](#)

[Scanner Buttons Do Not Work as Expected](#)

[Scanning Software Does Not Operate Correctly](#)

[Cannot Start Epson Scan](#)

[Scanning is Slow](#)

Parent topic: [Solving Problems](#)

Scanner Does Not Turn On or Turns Off Unexpectedly

If the scanner does not turn on or if it turns off unexpectedly, try these solutions:

- Make sure the AC adapter is securely connected to the scanner and to a working electrical outlet.
- If the scanner turns off unexpectedly, you may need to adjust the Power Off Timer setting.


Parent topic: [Solving Scanning Problems](#)

Related tasks

[Changing the Power Off Timer Setting](#)

Scanner Buttons Do Not Work as Expected

If the scanner buttons do not start the correct program or perform the correct action, try these solutions:

- Make sure Epson Scan is installed correctly. If necessary, uninstall and reinstall it.
- Check the default settings assigned to the scanner buttons in Event Manager and change them, if necessary.
- With Windows Vista or Windows XP, check the settings in your scanner's Properties window:
 - **Windows Vista:** Open the  menu and select **Control Panel > Hardware and Sound > Scanners and Cameras**. Select the scanner and click **Properties**.
 - **Windows XP:** Double-click **My Computer**, right-click the scanner name, and select **Properties**.

Click the **Events** tab and make sure **Take no action** is not selected. Also make sure the scanner buttons are selected in the **Select an event** list box and that **Start this program** is selected.

Parent topic: [Solving Scanning Problems](#)

Related tasks

[Uninstalling Scanner Software - Windows](#)

[Uninstalling Scanner Software - Mac OS X](#)

Scanning Software Does Not Operate Correctly

If your scanning software does not operate correctly, try these solutions:

- Make sure your computer has adequate memory and meets the system requirements for your operating system.
- Make sure your computer is not running in a power-saving mode, such as sleep or standby. If so, wake your system and restart your scanning software.
- If you upgraded your operating system but did not reinstall your scanning software, try reinstalling it.

- If you are scanning from a Mac, make sure no other Epson scanner drivers are installed. If other drivers are installed, uninstall them, then reinstall this scanner's software.

Parent topic: [Solving Scanning Problems](#)

Related tasks

[Uninstalling Scanner Software - Windows](#)

[Uninstalling Scanner Software - Mac OS X](#)

Cannot Start Epson Scan

If you cannot start Epson Scan, try these solutions:

- Make sure your scanner is turned on and any interface cables are securely connected at both ends.
- Make sure Epson Scan is selected in your scanning program.
- Make sure your computer is not running in a power-saving mode, such as sleep or standby. If so, wake your system and restart Epson Scan.
- If you connected the scanner using a USB cable, make sure it is connected directly to your computer or through only one USB hub.
- Check the connection setting and test the connection using Epson Scan Settings:

Windows 8: Navigate to the **Start** screen and select **EPSON Scan Settings**. Click the **Test** button.

Windows (other versions): Click  or **Start > All Programs** or **Programs > EPSON > EPSON Scan > EPSON Scan Settings**. Click the **Test** button.

Mac OS X: Open the **Applications** folder, click **Epson Software**, and click **EPSON Scan Settings**. Click the **Test** button.

- Make sure you do not have multiple versions of Epson Scan installed. If you do, uninstall both versions and install one version.
- If you upgraded your operating system but did not reinstall Epson Scan, try reinstalling it.
- If you cannot start Epson Scan in Full Auto Mode, your original may have a very dark or bright background, or be very large. Try scanning in another Epson Scan mode instead.

Parent topic: [Solving Scanning Problems](#)

Related tasks

[Uninstalling Scanner Software - Windows](#)

[Uninstalling Scanner Software - Mac OS X](#)

Scanning is Slow

If scanning becomes slow, try these solutions:

- Scan your original at a lower resolution, if possible.
- Make sure your system meets the requirements for your operating system. If you are scanning a high-resolution image, you may need more than the minimum requirements, such as a Hi-Speed USB port. If necessary, increase your system's memory.
- If you are running virus protection or other security software, exclude the TWAIN.log files from monitoring or set the TWAIN.log file as read only (Windows). See your virus protection or security software instructions for details. The TWAIN.log file is saved in the following locations:
 - **Windows XP:** C:\Documents and Settings\user name\Local Settings\Temp
 - **Windows (other versions):** C:\Users\user name\AppData\Local\Temp
- If you are scanning using DIGITAL ICE Technology, turn off the feature; scanning takes longer using DIGITAL ICE Technology.

Parent topic: [Solving Scanning Problems](#)

Related tasks

[Removing Dust and Scratch Marks Using DIGITAL ICE Technology](#)

Solving Scanned Image Quality Problems

Check these sections if a scanned image on your computer screen has a quality problem.

[Image Consists of a Few Dots Only](#)

[Line of Dots Appears in All Scanned Images](#)

[Straight Lines in an Image Appear Crooked](#)

[Image is Distorted or Blurry](#)

[Image Colors are Patchy at the Edges](#)

[Image is Too Dark](#)

[Back of Original Image Appears in Scanned Image](#)

[Ripple Patterns Appear in an Image](#)

[Image is Scanned Upside-Down](#)

[Scanned Image Colors Do Not Match Original Colors](#)

[Characters are not Recognized During Conversion to Editable Text \(OCR\)](#)

[Scan Area is Not Adjustable in Thumbnail Preview](#)

[Scanned Image Edges are Cropped](#)

[Film or Slide Scanning Does Not Work](#)
[Negative Film Preview Image Looks Incorrect](#)
[Ring Pattern Appears in Scanned Film or Slides](#)

Parent topic: [Solving Problems](#)

Image Consists of a Few Dots Only

If your scanned image consists only of a few dots, try these solutions:

- Make sure you placed your original for scanning facing the correct way.
- If you are scanning using the Epson Scan **Black & White** setting, adjust the **Threshold** setting and scan again.

Parent topic: [Solving Scanned Image Quality Problems](#)

Line of Dots Appears in All Scanned Images

If a line of dots appears in all your scanned images, clean the scanner glass with a soft, dry, lint-free cloth or use a small amount of glass cleaner on the cloth, if necessary. Paper towels are not recommended.

Caution: Do not spray glass cleaner directly on the scanner glass.

Parent topic: [Solving Scanned Image Quality Problems](#)

Related tasks

[Cleaning Your Scanner](#)

Straight Lines in an Image Appear Crooked

If straight lines in an original appear crooked in a scanned image, make sure to place your original straight when you scan it.

Parent topic: [Solving Scanned Image Quality Problems](#)

Related tasks

[Placing Originals on the Scanner Glass](#)

Image is Distorted or Blurry

If a scanned image appears distorted or blurry, try these solutions:

- Make sure your original is not wrinkled or warped. This may prevent the original from laying flat on the scanner glass.
- Do not move your original or your product during scanning.
- Your product will not operate properly while tilted at an angle. Place it on a flat, stable surface that extends beyond the base of the product in all directions.
- Adjust these Epson Scan settings (if available) and try scanning again:
 - Select the **Unsharp Mask** setting.
 - Adjust the **Auto Exposure** setting.
 - Increase the **Resolution** setting.

Parent topic: [Solving Scanned Image Quality Problems](#)

Image Colors are Patchy at the Edges

If you are scanning a thick or warped original, cover its edges with paper to block external light as you scan it.

Parent topic: [Solving Scanned Image Quality Problems](#)

Image is Too Dark

If your scanned image is too dark, try these solutions:

- Adjust these Epson Scan settings (if available) and try scanning again:
 - **Auto Exposure**
 - **Brightness**
 - **Histogram Adjustment**
- Check the brightness and contrast settings of your computer monitor.

Parent topic: [Solving Scanned Image Quality Problems](#)

Back of Original Image Appears in Scanned Image

If an image from the back of a thin original appears in your scanned image, place a piece of black paper on the back of the original and scan it again.

Parent topic: [Solving Scanned Image Quality Problems](#)

Ripple Patterns Appear in an Image

You may see a ripple pattern (called a moiré) in scanned images of printed documents. This is caused by interference from differing pitches in the scanner's screen and your original's halftone screen. To reduce this effect, adjust these Epson Scan settings (if available) and try scanning again:

- Select the **Descreening** setting.
- Select a lower **Resolution** setting.

Parent topic: [Solving Scanned Image Quality Problems](#)

Image is Scanned Upside-Down

Your product scans using the **Auto Photo Orientation** setting. This setting checks the preview image for faces, the sky, and other features, and then correctly rotates the photo when it is scanned, if necessary. If your photo is not oriented correctly using this option, deselect the **Auto Photo Orientation** setting and scan again.

Parent topic: [Solving Scanned Image Quality Problems](#)

Scanned Image Colors Do Not Match Original Colors

Printed colors can never exactly match the colors on your computer monitor because printers and monitors use different color systems: monitors use RGB (red, green, and blue) and printers typically use CMYK (cyan, magenta, yellow, and black).

Check the color matching and color management capabilities of your computer, display adapter, and the software you are using to see if they are affecting the palette of colors you see on your screen.

To adjust the colors in your scanned image, adjust these Epson Scan settings (if available) and try scanning again:

- Change the **Image Type** setting and experiment with different combinations of the next settings.
- Adjust the **Tone Correction** setting.
- Adjust the **Auto Exposure** setting.

Parent topic: [Solving Scanned Image Quality Problems](#)

Characters are not Recognized During Conversion to Editable Text (OCR)

If characters in your scanned images are not recognized during OCR conversion, try these solutions:

- Make sure your original is straight.

- Adjust these Epson Scan settings (if available) and try scanning again:
 - Select **Text Enhancement**
 - Select the correct **Image Type** setting
 - Adjust the **Threshold** setting
- Check the manual for your OCR software for any additional adjustments.

Parent topic: [Solving Scanned Image Quality Problems](#)

Related concepts

[Convert Scanned Documents to Editable Text \(OCR\)](#)

Scan Area is Not Adjustable in Thumbnail Preview

If you cannot adjust the scan area while viewing a Thumbnail preview in Epson Scan, try these solutions:

- Create a scan area by drawing a marquee on your preview image and adjusting it as necessary.
- Switch to Normal preview mode, if available, and preview your image again.

Parent topic: [Solving Scanned Image Quality Problems](#)

Scanned Image Edges are Cropped

If the edges of a scanned image are cropped, make sure your original is placed correctly for scanning. If necessary, move your original away from the edges of the scanner glass slightly.

Parent topic: [Solving Scanned Image Quality Problems](#)

Film or Slide Scanning Does Not Work

If you have trouble scanning film or slides, try these solutions:

- Remove the document mat from inside the scanner cover whenever you scan film or slides.
- Make sure your film or slides are placed correctly in the correct film holder, and the holder is positioned correctly on the scanner glass.
- Make sure the Epson Scan **Document Type** setting (Home Mode) or **Film Type** setting (Professional Mode) is set correctly.

Parent topic: [Solving Scanned Image Quality Problems](#)

Related topics

[Placing Film or Slides on the Scanner](#)

Negative Film Preview Image Looks Incorrect

If a preview image from a negative film original looks incorrect, try these solutions:


- Make sure the Epson Scan **Document Type** setting (Home Mode) or **Film Type** setting (Professional Mode) is set correctly.
- In Normal preview mode, the film holder or film edge may cause colors to appear incorrectly. Create marquees on the image area of each image and click **Zoom** to preview each image area.
- Try using Thumbnail preview mode instead of Normal preview mode.

Parent topic: [Solving Scanned Image Quality Problems](#)

Related topics

[Placing Film or Slides on the Scanner](#)

Ring Pattern Appears in Scanned Film or Slides

If you see a pattern of rings in scanned film or slide images, the original film or slide is curled. Flip the film or slide over in its holder, preview it again in Epson Scan, click the  icon, and scan it again to flip the scanned image back to its original orientation.

Parent topic: [Solving Scanned Image Quality Problems](#)

Related topics

[Placing Film or Slides on the Scanner](#)

When to Uninstall Your Scanner Software

If you have a problem that requires you to uninstall and re-install your software, follow the instructions for your operating system.

[Uninstalling Scanner Software - Windows](#)

[Uninstalling Scanner Software - Mac OS X](#)

Parent topic: [Solving Problems](#)

Uninstalling Scanner Software - Windows

You can uninstall and then re-install your scanner software to solve certain problems.

1. Turn off the scanner.
2. Disconnect any interface cables.

3. Do the following to uninstall each of your scanning software programs, then follow any on-screen instructions:
 - **Windows 8:** Navigate to the **Start** screen, right-click the screen, and select **All apps**. Select **Control Panel > Programs > Programs and Features**. Select the scanner software program and click **Uninstall/Change**.
 - **Windows 7 or Windows Vista:** Open the Windows **Control Panel** utility. Select **Programs and Features**. (In Classic view, select **Programs** and click **Uninstall a program**.) Select the scanner software program and click **Uninstall/Change**.
 - **Windows XP:** Open the Windows **Control Panel** utility. Double-click **Add or Remove Programs**. Select the scanner software program and click **Change/Remove**.
4. Restart your computer, then see the *Start Here* sheet to re-install your software.

Note: If you find that re-installing your scanner software does not solve a problem, contact Epson.

Parent topic: [When to Uninstall Your Scanner Software](#)

Uninstalling Scanner Software - Mac OS X

In most cases, you do not need to uninstall your scanner software before re-installing it. However, you can download the Uninstaller utility from the Epson support website to uninstall your scanner software as described here.

Note: If you find that re-installing your scanner software does not solve a problem, contact Epson.

1. To download the Uninstaller utility, visit the Epson download site ([U.S. downloads](#) or [Canadian downloads](#)).
2. Follow the instructions on the screen to install the Uninstaller utility.
3. Quit all applications currently running on your Mac.
4. Double-click the **Uninstaller** icon.
5. In the Epson Uninstaller screen, select the checkbox for each software program you want to uninstall.
6. Click **Uninstall**.
7. Follow the on-screen instructions to uninstall the software.
8. To reinstall your scanner software, see the *Start Here* sheet for instructions.

Parent topic: [When to Uninstall Your Scanner Software](#)

Where to Get Help

If you need to contact Epson for technical support services, use the following support options.

Internet Support

Visit Epson's support website at epson.com/support (U.S.) or epson.ca/support (Canada) for solutions to common problems. You can download drivers and documentation, get FAQs and troubleshooting advice, or email Epson with your questions.

Speak to a Support Representative

Before you call Epson for support, please have the following information ready:

- Product name
- Product serial number (located on a label on the product)
- Proof of purchase (such as a store receipt) and date of purchase
- Computer configuration
- Description of the problem

Then call:

- U.S.: (562) 276-4382, 6 AM to 8 PM, Pacific Time, Monday through Friday, and 7 AM to 4 PM, Pacific Time, Saturday
- Canada: (905) 709-3839, 6 AM to 8 PM, Pacific Time, Monday through Friday, and 7 AM to 4 PM, Pacific Time, Saturday

Days and hours of support are subject to change without notice. Toll or long distance charges may apply.

Note: For help using any other software on your system, see the documentation for that software for technical support.

Purchase Supplies and Accessories

You can purchase genuine Epson accessories at epson.com (U.S. sales) or epson.ca (Canadian sales). You can also purchase accessories from an Epson authorized reseller. To find the nearest one, call 800-GO-EPSON (800-463-7766).

Parent topic: [Solving Problems](#)

Technical Specifications

These sections list the technical specifications for your scanner.

Note: Epson offers a recycling program for end of life products. Please go to epson.com/recycle for information on how to return your products for proper disposal.

[Windows System Requirements](#)

[Mac System Requirements](#)

[General Specifications](#)

[Dimension Specifications](#)

[Electrical Specifications](#)

[Environmental Specifications](#)

[USB Interface Specifications](#)

[Safety and Approvals Specifications](#)

Windows System Requirements

Make sure your system meets these requirements before using it with your scanner.

System	Microsoft Windows 8, Windows 7, Windows Vista, Windows XP, Windows XP x64
Interface	USB 2.0 Type-A
Display	Color monitor with 1024 x 768 resolution or higher, 24-bit (Full Color) color support

Parent topic: [Technical Specifications](#)

Mac System Requirements

Make sure your system meets these requirements before using it with your scanner.

System	Mac OS X 10.8.x, 10.7.x, 10.6.x, 10.5.8 (Fast user switching on Mac OS X is not supported.)
Interface	Macintosh USB

Display Color monitor with 1024 × 768 resolution or higher and support for millions of colors

Note: Epson Scan does not support the UNIX File System (UFS) for Mac OS X. Install Epson Scan on a disk or in a partition that does not use UFS.

Parent topic: [Technical Specifications](#)

General Specifications

Scanner type	Flatbed, color
Photoelectric device	Color CCD line sensor
Effective pixels	54400 × 74880 pixels at 6400 dpi Scanning area may be restricted if resolution setting is large.
Document size	Maximum: 8.5 × 11.7 inches (216 × 297 mm); US letter or A4 Transparencies: 35 mm film strip: 12 frames at a time 35 mm slides: up to 4 slides at a time 6 cm medium format film: up to 22 cm
Scanning resolution	6400 dpi (main scan) 9600 dpi with Micro Step (sub scan)
Output resolution	50 to 6400, 9600, and 12800 dpi (50 to 6400 dpi in 1 dpi increments)
Image data	16 bits per pixel per color internal 16 bits per pixel per color external
Interface	One Hi-Speed USB port
Light source	White LED, IR LED

Parent topic: [Technical Specifications](#)

Dimension Specifications

Height	4.6 inches (118 mm)
Width	11.0 inches (280 mm)
Depth	19.1 inches (485 mm)
Weight (without AC adapter)	9.0 lb (4.1 kg)

Parent topic: [Technical Specifications](#)

Electrical Specifications

Scanner

Note: Check the label on the scanner and the AC adapter for voltage information. Power consumption varies depending on operating conditions or whether an option is installed.

Rated input voltage	DC 24 V
Rated input current	1.3 A
Power consumption	Operating: 15.5 W Ready mode: 5.5 W Sleep mode: 1.6 W Power off mode: 0.4 W

AC Adapter

AC adapter model	100 to 120 V model: A411B 220 to 240 V model: A411E
Rated input voltage	100 to 120 V model: 100 to 120 V 220 to 240 V model: 220 to 240 V

Rated input current	100 to 120 V model: 1.0 A 220 to 240 V model: 0.5 A
Rated input frequency	50 to 60 Hz
Rated output voltage	DC 24 V
Rated output current	1.3 A

Parent topic: [Technical Specifications](#)

Environmental Specifications

Temperature	Operating: 50 to 95 °F (10 to 35 °C) Storage: –13 to 140 °F (–25 to 60 °C)
Humidity (non-condensing)	Operating: 10 to 80% RH Storage: 10 to 85% RH
Operating conditions	Ordinary office or home conditions

Note: Avoid operating the scanner in direct sunlight, near a strong light source, or in extremely dusty conditions.

Parent topic: [Technical Specifications](#)

USB Interface Specifications

Interface type	Universal Serial Bus Specification Revision 2.0
Electrical standard	Full Speed mode (12 Mbits per second) and Hi-Speed mode (480 Mbits per second) of Universal Serial Bus Specification Revision 2.0
Connector type	One Type B port

Parent topic: [Technical Specifications](#)

Safety and Approvals Specifications

Scanner

United States

EMC: FCC part 15 Subpart B class B

Canada

EMC: CAN/CSA-CEI/IEC CISPR 22 Class B

AC Adapter

United States

Safety: UL60950-1

EMC: FCC part 15 Subpart B class B

Canada

Safety: CAN/CSA C22.2 No. 60950-1

EMC: CAN/CSA-CEI/IEC CISPR 22 Class B

Parent topic: [Technical Specifications](#)

Notices

Check these sections for important notices about your scanner.

Note: Epson offers a recycling program for end of life products. Please go to [epson.com/recycle](https://www.epson.com/recycle) for information on how to return your products for proper disposal.

[Important Safety Instructions](#)

[Restrictions on Copying](#)

[Default Delay Times for Power Management for Epson Products](#)

[Trademarks](#)

[Copyright Notice](#)

Important Safety Instructions

Follow these safety instructions when setting up and using the scanner:

- Read all these instructions, and follow all warnings and instructions marked on the scanner.
- Place the scanner close enough to the computer for the interface cable to reach it easily.
- Do not place or store the scanner or the AC adapter outdoors, near excessive dirt or dust, water, heat sources, or in locations subject to shocks, vibrations, high temperature or humidity, direct sunlight, strong light sources, or rapid changes in temperature or humidity.
- Do not use with wet hands.
- Place the scanner and the AC adapter near an electrical outlet where the adapter can be easily unplugged.
- The AC power cord should be placed to avoid abrasions, cuts, fraying, crimping, and kinking.
- Do not place objects on top of the AC power cord and do not allow the AC adapter or the power cord to be stepped on or run over. Be particularly careful to keep the AC power cord straight at the end and the point where it enters the AC adapter.
- Use only the AC adapter that comes with your scanner. Using any other adapter could cause fire, electrical shock, or injury.
- The AC adapter is designed for use with the scanner with which it was included. Do not attempt to use it with other electronic devices unless specified.

- Use only the type of power source indicated on the AC adapter's label, and always supply power directly from a standard domestic electrical outlet with the AC adapter that meets the relevant local safety standards.
- When connecting this product to a computer or other device with a cable, ensure the correct orientation of the connectors. Each connector has only one correct orientation. Inserting a connector in the wrong orientation may damage both devices connected by the cable.
- Avoid using outlets on the same circuit as photocopiers or air control systems that regularly switch on and off.
- If you use an extension cord with the scanner, make sure the total ampere rating of the devices plugged into the extension cord does not exceed the cord's ampere rating. Also, make sure the total ampere rating of all devices plugged into the wall outlet does not exceed the wall outlet's ampere rating.
- Never disassemble, modify, or attempt to repair the AC adapter, scanner, or scanner option by yourself except as specifically explained in the scanner's guides.
- Do not insert objects into any opening as they may touch dangerous voltage points or short out parts. Beware of electrical shock hazards.
- If damage occurs to the plug, replace the cord set or consult a qualified electrician. If there are fuses in the plug, make sure you replace them with fuses of the correct size and rating.
- Unplug the scanner and the AC adapter, and refer servicing to qualified service personnel under the following conditions: The AC adapter or plug is damaged; liquid has entered the scanner or the AC adapter; the scanner or the AC adapter has been dropped or the case has been damaged; the scanner or the AC adapter does not operate normally or exhibits a distinct change in performance. (Do not adjust controls that are not covered by the operating instructions.)
- Unplug the scanner and the AC adapter before cleaning. Clean with a damp cloth only. Do not use liquid or aerosol cleaners.
- If you are not going to use the scanner for a long period, be sure to unplug the AC adapter from the electrical outlet.

Parent topic: [Notices](#)

Restrictions on Copying

Observe the following restrictions to ensure responsible and legal use of your scanner.

Copying of the following items is prohibited by law:

- Bank bills, coins, government-issued marketable securities, government bond securities, and municipal securities

- Unused postage stamps, pre-stamped postcards, and other official postal items bearing valid postage
- Government-issued revenue stamps, and securities issued according to legal procedure

Exercise caution when copying the following items:

- Private marketable securities (stock certificates, negotiable notes, checks, etc.), monthly passes, concession tickets, etc.
- Passports, driver's licenses, warrants of fitness, road passes, food stamps, tickets, etc.

Note: Copying these items may also be prohibited by law.

Restriction on disassembling and decompiling

You may not disassemble, decompile or otherwise attempt to derive the source code of any software included with this product.

Parent topic: [Notices](#)

Default Delay Times for Power Management for Epson Products

This product will enter sleep mode after a period of nonuse. The time interval has been set at the factory to ensure that the product meets Energy Star standards of energy efficiency, and cannot be modified by the consumer.

Parent topic: [Notices](#)

Trademarks

EPSON® and Perfection® are registered trademarks and EPSON Exceed Your Vision is a registered logomark of Seiko Epson Corporation.

Epson StoreSM is a service mark of Epson America, Inc.

Macintosh, Mac and Mac OS are trademarks of Apple Inc., registered in the U.S. and other countries.

General Notice: Other product names used herein are for identification purposes only and may be trademarks of their respective owners. Epson disclaims any and all rights in those marks.



Parent topic: [Notices](#)

Copyright Notice

All rights reserved. No part of this publication may be reproduced, stored in a retrieval system, or transmitted in any form or by any means, electronic, mechanical, photocopying, recording, or otherwise, without the prior written permission of Seiko Epson Corporation. The information contained herein is designed only for use with this Epson product. Epson is not responsible for any use of this information as applied to other products.

Neither Seiko Epson Corporation nor its affiliates shall be liable to the purchaser of this product or third parties for damages, losses, costs, or expenses incurred by purchaser or third parties as a result of: accident, misuse, or abuse of this product or unauthorized modifications, repairs, or alterations to this product, or (excluding the U.S.) failure to strictly comply with Seiko Epson Corporation's operating and maintenance instructions.

Seiko Epson Corporation shall not be liable for any damages or problems arising from the use of any options or any consumable products other than those designated as Original Epson Products or Epson Approved Products by Seiko Epson Corporation.

Seiko Epson Corporation shall not be held liable for any damage resulting from electromagnetic interference that occurs from the use of any interface cables other than those designated as Epson approved Products by Seiko Epson Corporation.

This information is subject to change without notice.

[libTIFF Software Acknowledgment](#)

[A Note Concerning Responsible Use of Copyrighted Materials](#)

[Copyright Attribution](#)

Parent topic: [Notices](#)

libTIFF Software Acknowledgment

Copyright © 1988-1997 Sam Leffler

Copyright © 1991-1997 Silicon Graphics, Inc.

Permission to use, copy, modify, distribute, and sell this software and its documentation for any purpose is hereby granted without fee, provided that (i) the above copyright notices and this permission notice appear in all copies of the software and related documentation, and (ii) the names of Sam Leffler and Silicon Graphics may not be used in any advertising or publicity relating to the software without the specific, prior written permission of Sam Leffler and Silicon Graphics.

THE SOFTWARE IS PROVIDED "AS-IS" AND WITHOUT WARRANTY OF ANY KIND, EXPRESS, IMPLIED OR OTHERWISE, INCLUDING WITHOUT LIMITATION, ANY WARRANTY OF MERCHANTABILITY OR FITNESS FOR A PARTICULAR PURPOSE.

IN NO EVENT SHALL SAM LEFFLER OR SILICON GRAPHICS BE LIABLE FOR ANY SPECIAL, INCIDENTAL, INDIRECT OR CONSEQUENTIAL DAMAGES OF ANY KIND, OR ANY DAMAGES WHATSOEVER RESULTING FROM LOSS OF USE, DATA OR PROFITS, WHETHER OR NOT ADVISED OF THE POSSIBILITY OF DAMAGE, AND ON ANY THEORY OF LIABILITY, ARISING OUT OF OR IN CONNECTION WITH THE USE OR PERFORMANCE OF THIS SOFTWARE.

Parent topic: [Copyright Notice](#)

A Note Concerning Responsible Use of Copyrighted Materials

Epson encourages each user to be responsible and respectful of the copyright laws when using any Epson product. While some countries' laws permit limited copying or reuse of copyrighted material in certain circumstances, those circumstances may not be as broad as some people assume. Contact your legal advisor for any questions regarding copyright law.

Parent topic: [Copyright Notice](#)

Copyright Attribution

© 2013 Epson America, Inc.

9/13

CPD-39283R1

Parent topic: [Copyright Notice](#)