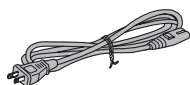
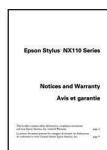
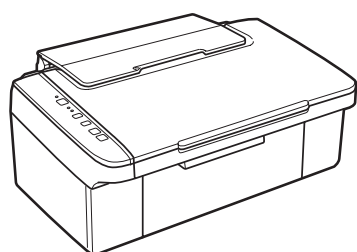


Epson Stylus® NX110 Series Start Here

Read these instructions before using the printer.

1 Unpack



(Included for Canada only)

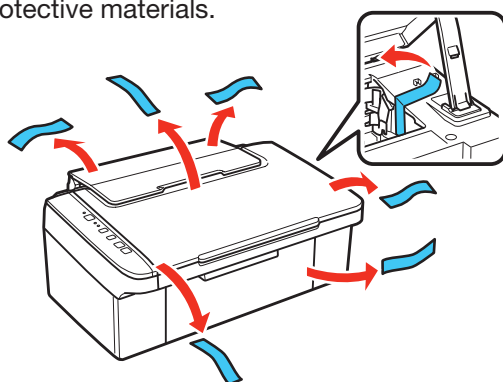
If anything is missing, contact Epson as described on the back.

Note: The model name of your product may vary slightly from the one shown above. The included CD and documentation apply to all products in the series.

Caution: Do not open the ink cartridge package until you are ready to install the ink. Cartridges are vacuum packed to maintain reliability.

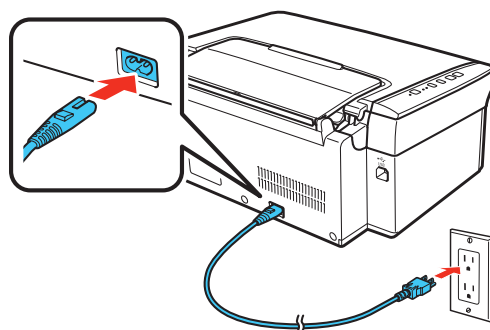
Canada only: For French speakers, remove stickers from the backing sheet and place over corresponding text on the control panel.

Remove all the protective materials.



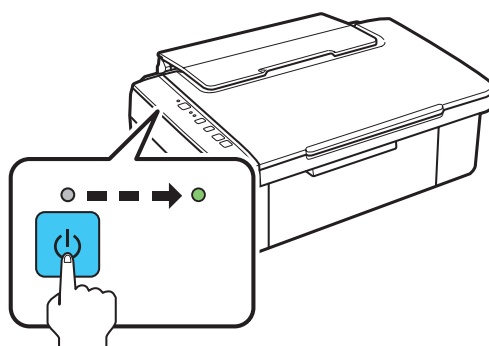
2 Turn on the NX110 Series

1 Connect the power cable.



Caution: Do not connect to your computer yet.

2 Press the **On** button.



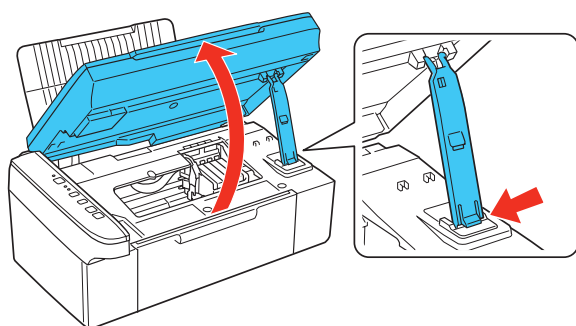
411584800

3

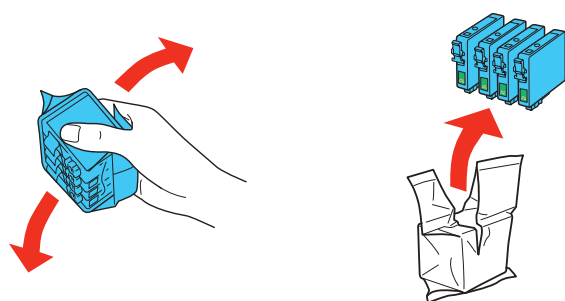
Install cartridges

Note: Do not load paper yet.

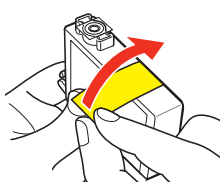
- 1 Lift up the scanner and prop it up with the support.



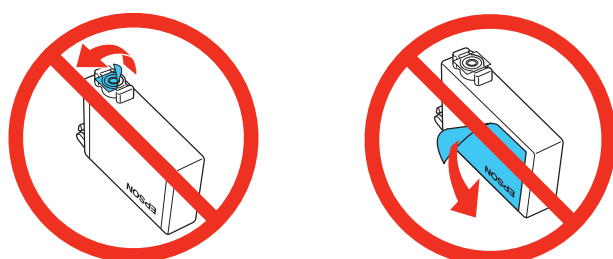
- 2 Shake the ink cartridges, then unpack them.



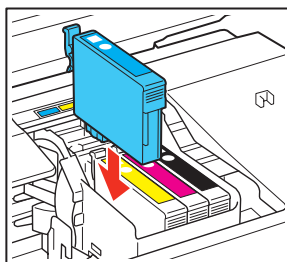
- 3 Remove only the yellow tape from each cartridge.



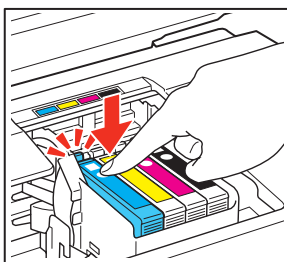
Caution: Do not remove any other seals or the cartridge may leak.



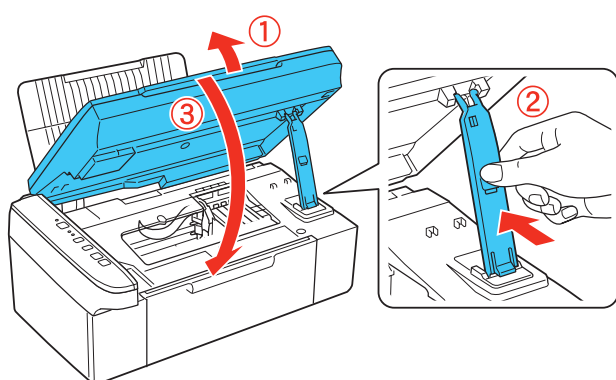
- 4 Insert the cartridges in the holder for each color.



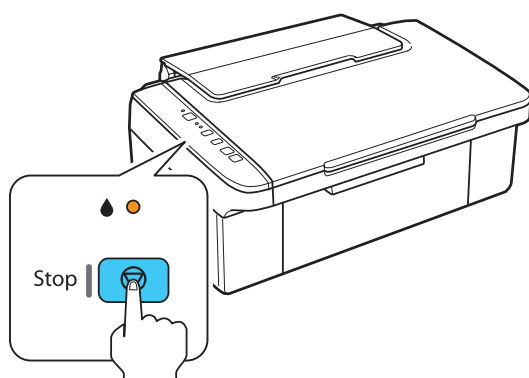
- 5 Press each cartridge down until it clicks.



- 6** Release the scanner support and lower the scanner.



- 7** Press the **Stop** button to charge the ink. Charging takes about 2 minutes.

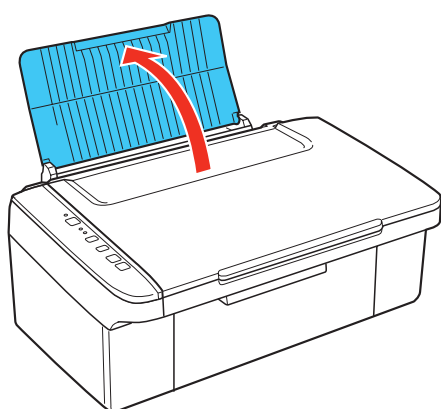


Caution: Don't turn off the NX110 Series while it is charging or you'll waste ink.

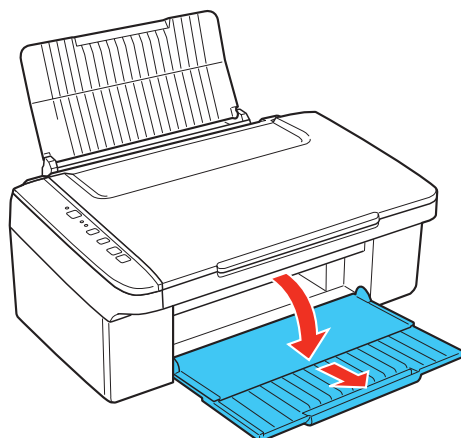
Note: Your printer ships with full cartridges and part of the ink from the first cartridges is used for priming the printer.

4 Load paper

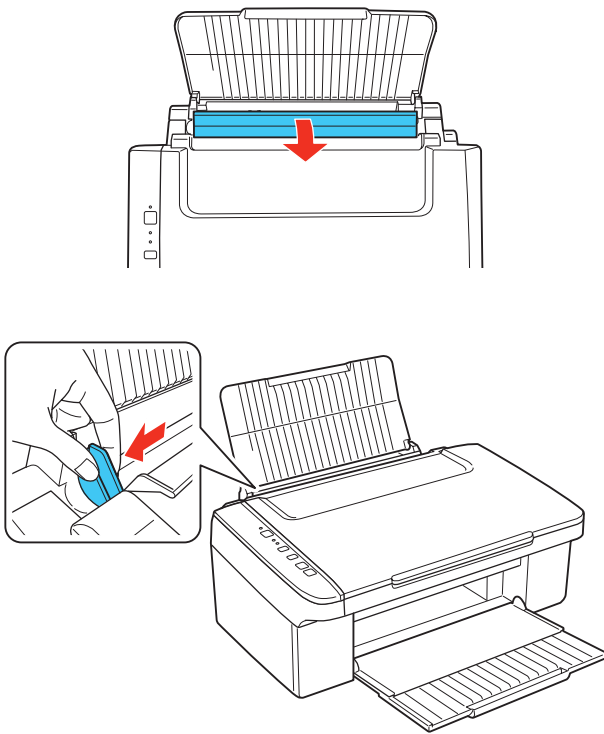
- 1** Open the paper support.



- 2** Open the output tray and pull out the extension.

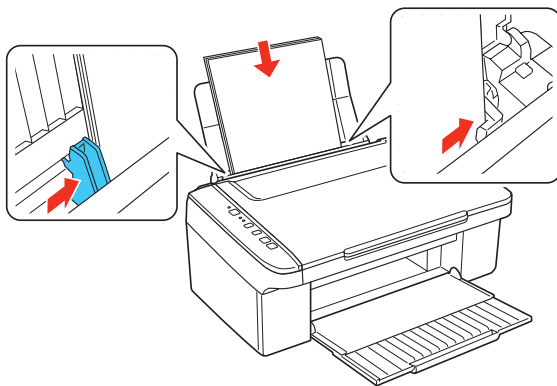


- 3** Flip the feeder guard forward. Then squeeze the edge guide and slide it left.

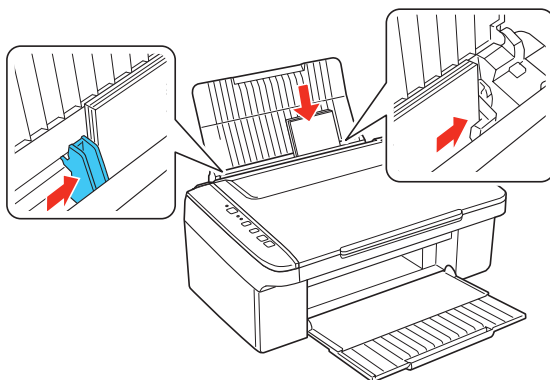


- 4** Load paper against the right edge and underneath the tab, then slide the edge guide over.

8½ × 11



4 × 6



Note: Don't load the paper sideways. Always load it short edge first.



- 5** Flip the feeder guard back.

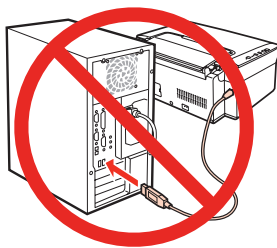
5

Install software

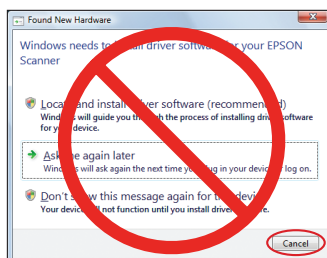
Your software works with Windows® 2000, XP, XP Professional x64 Edition, Windows Vista®, and Mac OS® X 10.3.9, 10.4.11, and 10.5.x.

Windows

- 1 Make sure the NX110 Series is **NOT CONNECTED** to your computer.

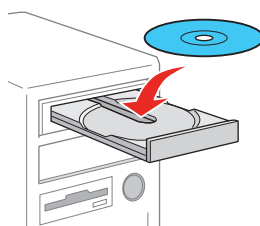


Note: If you see a Found New Hardware screen, click **Cancel** and disconnect the USB cable.

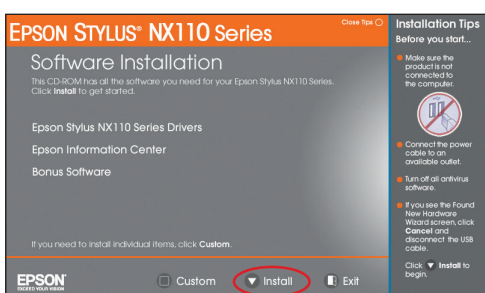


- 2 Insert the NX110 Series Software CD.

With Windows Vista, if you see the AutoPlay window, click **Run SETUP.EXE**. When you see the User Account Control screen, click **Continue**.



- 3 Click **Install** and follow the on-screen instructions.

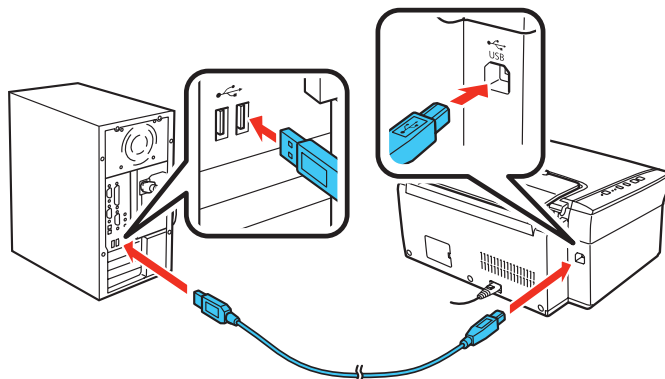


- 4 When you see the screen below, click the first option and then click **Next**, unless the NX110 Series is connected to your computer through an external print server.

If you're using an external print server, click the second option, click **Next**, then skip to step 6.



- 5 When prompted, connect a USB cable. Use any open USB port on your computer.



Note: If installation doesn't continue after a moment, make sure you securely connected and turned on the NX110 Series.

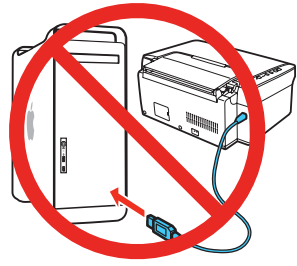
- 6 Follow the on-screen instructions to install the rest of the software and register your NX110 Series.

- 7 When you're done, remove the CD.

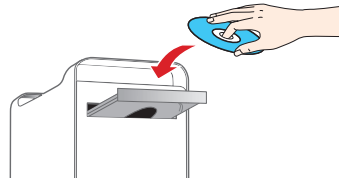
You're ready to print, copy, and scan! See your on-screen *Epson Information Center* for instructions.


Macintosh®

- 1** Make sure the NX110 Series is **NOT CONNECTED** to your computer.



- 2** Insert the NX110 Series Software CD.

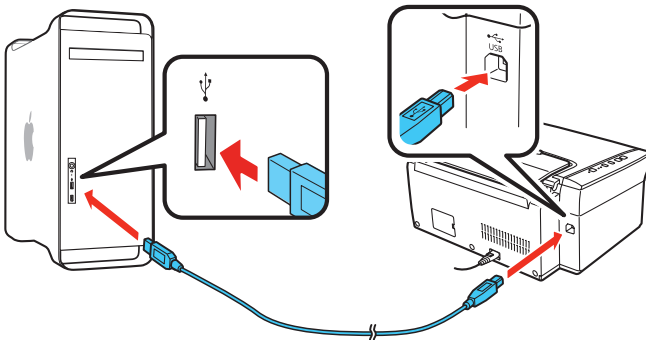


- 3** Double-click the  **Epson** icon.

- 4** Click **Install** and follow the on-screen instructions.



- 5** When prompted, connect a USB cable. Use any open USB port on your Macintosh. Make sure the NX110 Series is securely connected and turned on.

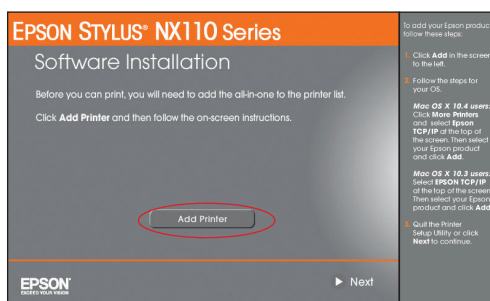


- 6** Mac OS X 10.5 users: skip to step 10.
Other users: continue with step 7.

- 7** When you see this screen, click **Add Printer**.



- 8** Follow the steps on the right of the screen to add the NX110 Series.



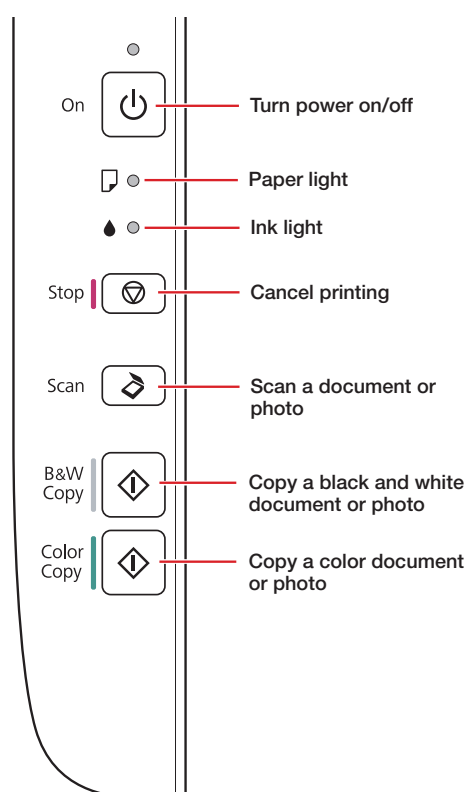
- 9** Click **Next** again, if necessary.

- 10** Follow the on-screen instructions to install the rest of the software and register your NX110 Series.

- 11** When you're done, eject the CD.

You're ready to print, copy, and scan! See your on-screen *Epson Information Center* for instructions.

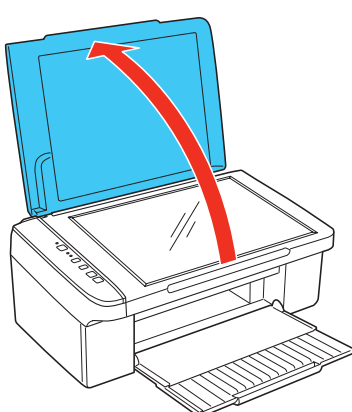
Control panel



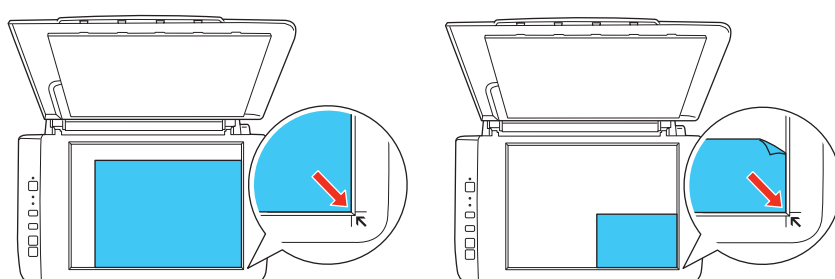
To scan or copy

Place original

- 1 Open the document cover.



- 2 Place your original face-down on the glass with the top facing into the front right corner.



- 3 Close the document cover.

To scan

Press the **Scan** button to scan the image. Then save the file on your computer. See your on-screen *Epson Information Center* for more information.

To copy

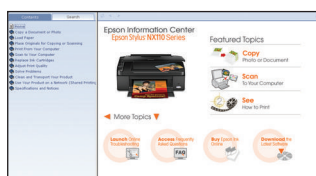
- For black and white, press **B&W Copy**.
- For color, press **Color Copy**.
- To make 20 copies at a time, hold down the **Scan** button and press **B&W Copy** or **Color Copy**.
- To make a quick draft copy, hold down the **Stop** button and press **B&W Copy** or **Color Copy**.

See your on-screen *Epson Information Center* for more information.

Any questions?

On-screen Epson Information Center

Click the desktop shortcut for easy access to the NX110 Series user's guide, FAQs, online troubleshooting advice, and software downloads. You can also purchase paper and ink.



On-screen help with your software

Select **Help** or **?** when you're using your software.

Epson Technical Support

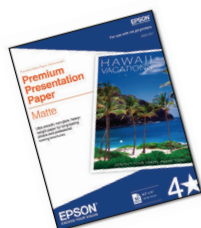
Internet Support: Visit Epson's support website at epson.com/support and select your product for solutions to common problems. You can download drivers and documentation, get FAQs and troubleshooting advice, or e-mail Epson with your questions.

Speak to a Support Representative: Call (562) 276-4382 (U.S.) or (905) 709-3839 (Canada), 6 AM to 6 PM, Pacific Time, Monday through Friday. Days and hours of support are subject to change without notice. Toll or long distance charges may apply.

Need paper and ink?

Want great results? Simple. Use genuine Epson paper and ink. For the right supplies at the right time, you can purchase them at Epson Supplies CentralSM at www.epson.com/ink3 (U.S. sales) or www.epson.ca (Canadian sales). You can also purchase supplies from an Epson authorized reseller. To find the nearest one, call 800-GO-EPSON (800-463-7766).

Genuine Epson paper



Premium Presentation Paper Matte

Ultra smooth, non-glare, heavy-weight paper for long-lasting photos and professional looking brochures.



Premium Photo Paper Glossy

High gloss, instant-drying paper for beautiful, durable photos made to share or display in an album.

Genuine Epson inks



Look for the numbers below to find your cartridges. It's as easy as remembering your number!

Color	Moderate Use	Standard-capacity (for heavier use)
● Black	88	69
● Cyan	88	69
● Magenta	88	69
● Yellow	88	69

Epson and Epson Stylus are registered trademarks, Epson Exceed Your Vision is a registered logomark, and Supplies Central is a service mark of Seiko Epson Corporation. DURABrite is a registered trademark of Epson America, Inc.

General Notice: All other trademarks are the property of their respective owners. Epson disclaims any and all rights in those marks.

This information is subject to change without notice.

© 2009 Epson America, Inc. 1/09

CPD-27229

Cut out the card to the right and keep it with you when purchasing replacement ink cartridges.

Epson Stylus[®] NX110 Series Ink Cartridges



Color	Moderate Use	Standard-capacity
● Black	88	69
● Cyan	88	69
● Magenta	88	69
● Yellow	88	69