

# Ultra Hi-Definition R280 Photo Printer

Photos | CDs | Documents



## Quick Guide

# Contents

<b>Introduction</b> .....	<b>3</b>
<b>Loading Paper</b> .....	<b>4</b>
Using Special Papers .....	<b>5</b>
<b>Basic Printing</b> .....	<b>7</b>
Printing in Windows .....	<b>7</b>
Printing with a Macintosh .....	<b>9</b>
Selecting the Correct Paper Type .....	<b>11</b>
Printing Borderless Photos .....	<b>12</b>
Printing on CDs and DVDs .....	<b>13</b>
<b>Maintaining Your Printer</b> .....	<b>15</b>
Checking the Print Head Nozzles .....	<b>15</b>
Cleaning the Print Head .....	<b>16</b>
Checking the Ink Cartridge Status .....	<b>17</b>
Purchasing Epson Ink Cartridges .....	<b>17</b>
Replacing Ink Cartridges .....	<b>18</b>
<b>Solving Problems</b> .....	<b>22</b>
Checking for Software Updates .....	<b>22</b>
Error Indicators .....	<b>22</b>
Problems and Solutions .....	<b>23</b>
Where To Get Help .....	<b>25</b>
<b>Notices</b> .....	<b>26</b>

# Introduction

After you have set up your Epson Stylus® Photo R280 Series as described on the *Start Here* sheet, turn here to:

- Load paper
- Get the basic steps for printing from your computer
- Print true BorderFree® frame-ready prints on select 4 × 6, 5 × 7, 8 × 10, and letter-size papers
- Print on ink jet-printable CDs and DVDs
- Perform routine maintenance
- Solve simple problems

For additional instructions, see the on-screen *User's Guide* by selecting the icon for it on your desktop.

Please follow these guidelines as you read your R280 Series instructions:

**Warning:**

Warnings must be followed carefully to avoid bodily injury.

**Caution:**

Cautions must be observed to avoid damage to your equipment.

**Note:**

Notes contain important information about your R280 Series.

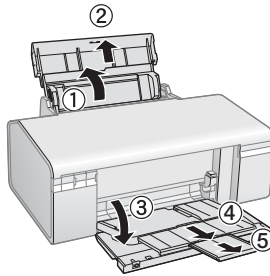
**Tip:**

Tips contain hints for better printing.

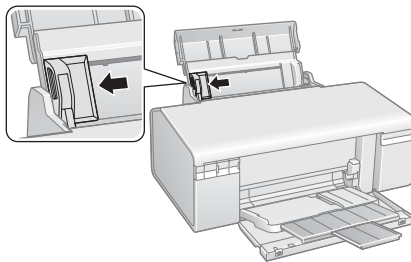
# Loading Paper

You can load up to 120 sheets of plain paper, 100 sheets of matte paper, and 20 sheets of most other photo papers (see page 5 for a list). Load transfer paper and adhesive sheets one sheet at a time.

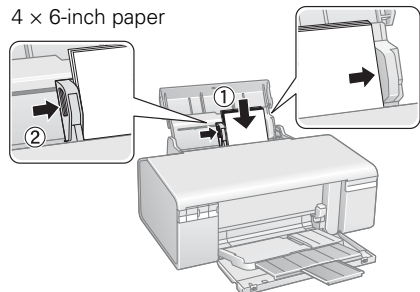
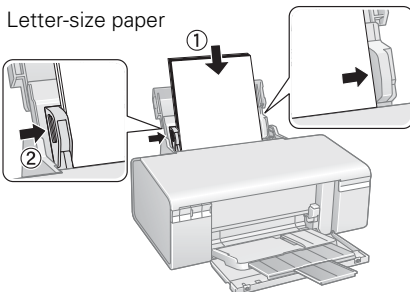
1. Open the paper support and pull out the extension. Then open the front tray and pull out the extensions.



2. Slide the edge guide left.



3. Insert the paper, glossy or printable side up, against the right side. Then slide the edge guide against the paper.



Always load paper short edge first, even for landscape printing. Load letterhead or pre-printed paper top edge first, facing up. Make sure the paper stack fits under the ► arrow mark inside the left edge guide.

**Note:**

The type of paper you choose affects the way your printout looks. If you are just printing a rough draft of an image, plain paper is fine. However, for the best results, you'll want to use one of Epson's special ink jet papers designed for your printer. For example, your photos will look great printed on Epson Premium Photo Paper Glossy (see below for more information).

For instructions on loading envelopes, see your on-screen *User's Guide*.

---

## Using Special Papers

Epson offers a wide array of high quality papers, making it easy to maximize the impact of your photos, presentations, and creative projects.

You can purchase genuine Epson ink and paper at Epson Supplies Central<sup>SM</sup> at [www.epson.com/ink3](http://www.epson.com/ink3) (U.S. sales) or [www.epson.ca](http://www.epson.ca) (Canadian sales). You can also purchase supplies from an Epson authorized reseller. To find the nearest one, call 800-GO-EPSON (800-463-7766).

Paper name	Size	Part number	Sheet count
Epson Ultra Premium Photo Paper Glossy	Borderless 4 × 6 inches	S041934 S042181 S042174	50 60 100
	Borderless 5 × 7 inches	S041945	20
	Borderless 8 × 10 inches	S041946	20
	Letter (8.5 × 11 inches)	S041935 S042182 S042175	20 25 50
Epson Ultra Premium Photo Paper Luster	Letter (8.5 × 11 inches)	S041405	50

<b>Paper name</b>	<b>Size</b>	<b>Part number</b>	<b>Sheet count</b>
Epson Premium Photo Paper Glossy	Borderless 4 × 6 inches	S041808 S041727	40 100
	Borderless 5 × 7 inches	S041464	20
	Borderless 8 × 10 inches	S041465	20
	Letter (8.5 × 11 inches)	S041286 S042183 S041667	20 25 50
Epson Premium Photo Paper Semi-gloss	Borderless 4 × 6 inches	S041982	40
	Letter (8.5 × 11 inches)	S041331	20
Epson Photo Paper Glossy	Borderless 4 × 6 inches	S041809 S042038	50 100
	Letter (8.5 × 11 inches)	S041141 S041649 S041271	20 50 100
Epson Bright White Paper	Letter (8.5 × 11 inches)	S041586	500
Epson Premium Presentation Paper Matte	Borderless 8 × 10 inches	S041467	50
	Letter (8.5 × 11 inches)	S041257 S042180	50 100
Epson Premium Presentation Paper Matte Double-sided	Letter (8.5 × 11 inches)	S041568	50
Epson Presentation Paper Matte	Letter (8.5 × 11 inches)	S041062	100
	Legal (8.5 × 14 inches)	S041067	100
Epson Photo Quality Self-Adhesive Sheets	A4 (8.3 × 11.7 inches)	S041106	10
Epson Iron-On Cool Peel Transfer Paper	Letter (8.5 × 11 inches)	S041153	10

## 6 Loading Paper

# Basic Printing

This section describes the basic steps for printing a photo or document stored on your Windows® or Macintosh® computer, and printing directly on an ink jet-printable CD or DVD. For detailed instructions on printing, see the on-screen *User's Guide*.

Before you start, make sure you've installed your printer software and connected the printer to your computer as described on the *Start Here* sheet.

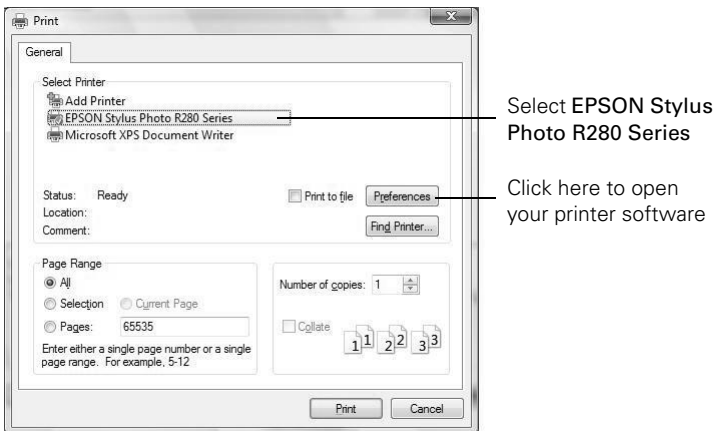
## Tip:

It's a good idea to check for updates to your Epson Stylus Photo R280 Series software. See "Checking for Software Updates" on page 22 for instructions.

---

## Printing in Windows

1. Load paper (see page 4).
2. Open a photo or document in a printing program.
3. Open the File menu and select Print. You see a window like this one:

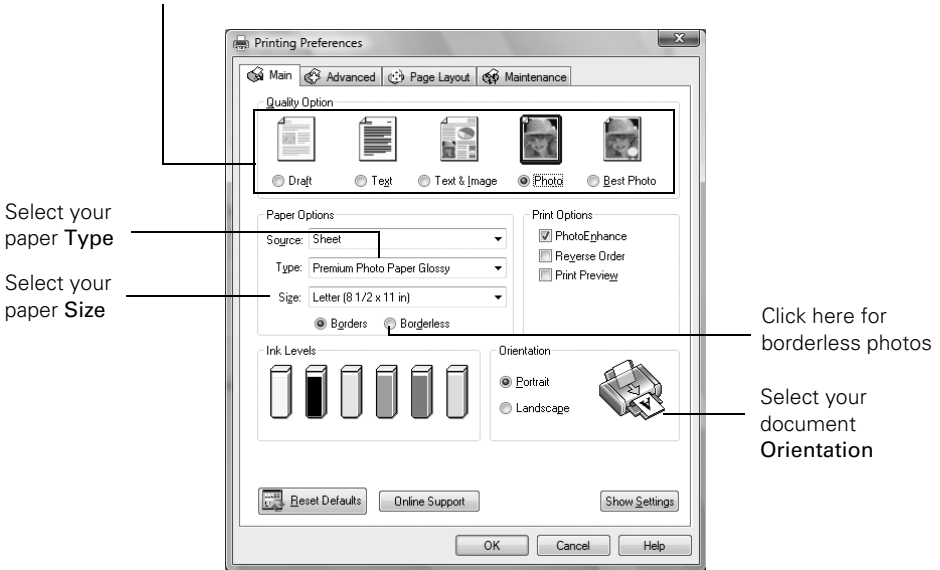


4. Make sure EPSON Stylus Photo R280 Series is selected, then click the Preferences or Properties button.

(If you see a Setup, Printer, or Options button, click it. Then click Preferences or Properties on the next screen.)

5. On the Main tab, select the basic print settings. Make sure you choose the correct paper Type setting for your paper (see page 11).

Select the type of document you're printing  
(choose Photo or Best Photo for pictures)



**Tip:**

For the best quality printing, select PhotoEnhance™ (also known as Auto Photo Correction). This automatically adjusts brightness, contrast, and saturation to best effect and uses a sophisticated face recognition technology to optimize image tones in portraits. If your photo includes a face with an intentional color cast, such as a bronze statue, you may want to turn off PhotoEnhance to retain the special color effects.

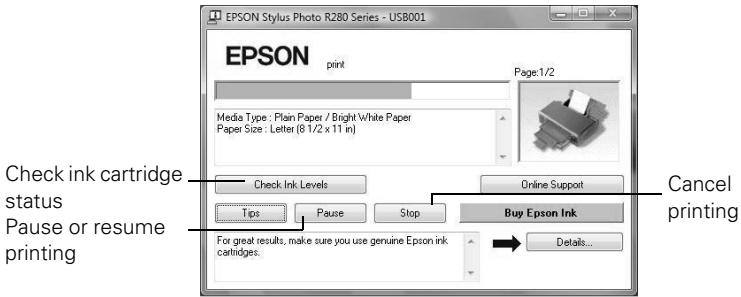
6. If you want to reduce or enlarge your printout or print double-sided, click the Page Layout tab and select settings as necessary.
7. For more printing options, click the Advanced tab.

**Note:**

For more information about print settings, or instructions on saving them as a group so you can reuse them later, click ? or Help.

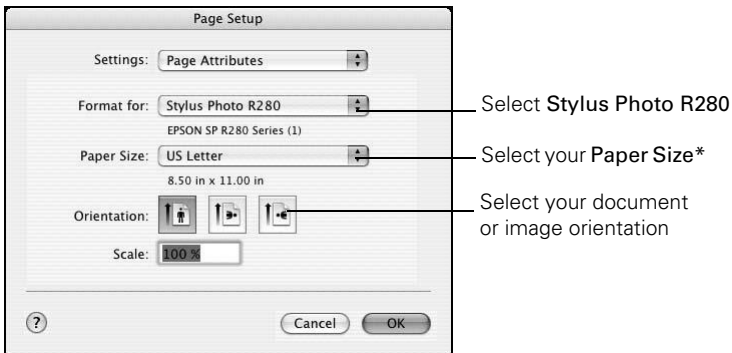


- Click **OK** to save your settings, then click **OK** or **Print** to start printing. This window appears and shows the progress of your print job.



## Printing with a Macintosh

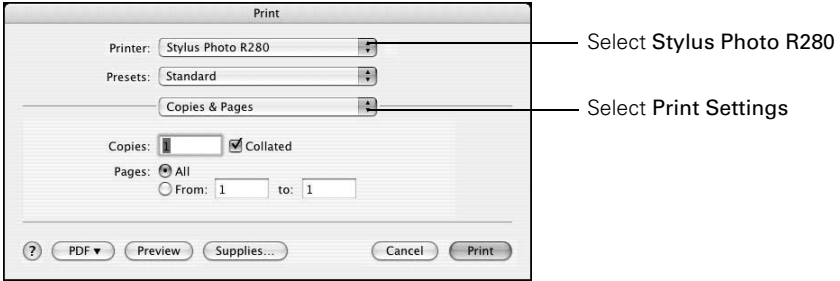
- Load paper (see page 4).
- Open a photo or document in a printing program.
- Select **Page Setup** from the **File** menu. Make the following settings:



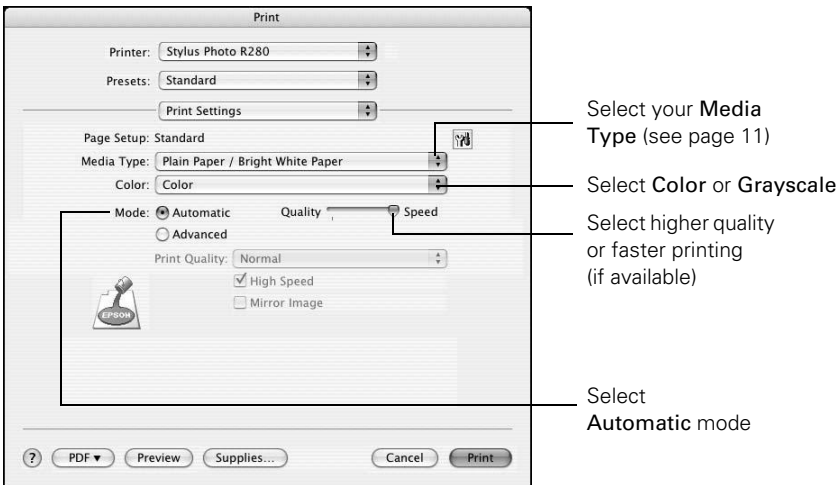
\* For borderless printing, choose a **Sheet Feeder - Borderless** option in the Paper Size list for your paper size (US Letter, 8 x 10 in, 4 x 6 in, or 5 x 7 in).

- Click **OK** to close the Page Setup window.

5. Select **Print** from the File menu. You see a window like this one:



6. Choose **Print Settings** from the pop-up menu and select the following settings as necessary:



**Note:**


In certain programs, you may need to select **Advanced** before you can select **Print Settings**. For more information about printer settings, click the ? button.


7. Choose any other printing options you may need from the pop-up menu. See the on-screen *User's Guide* for details.
8. Click the **Advanced** button to change additional settings.

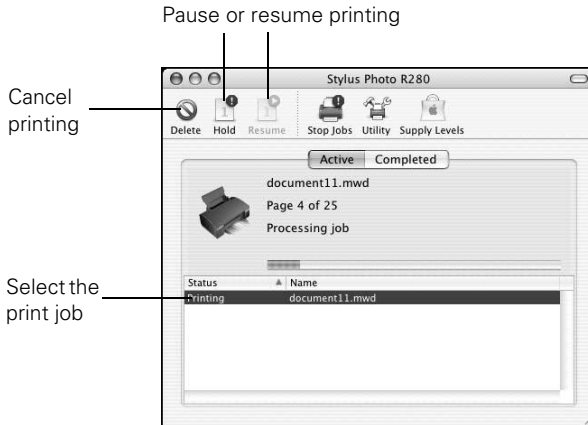
**Note:**

For more information on advanced settings, or instructions on saving them as a group so you can reuse them later, click ?.

9. Click **Print**.

10. To monitor the progress of your print job, click the  printer icon when it appears in the dock on the bottom of your desktop.

If you're using OS X 10.2.x, click the  Print Center icon instead, then double-click **Stylus Photo R280** in the Printer List window.



11. When you're finished, close the printer window or Print Center.

## Selecting the Correct Paper Type

Select the correct **Type** (see page 8) or **Media Type** (see page 10) setting in your printer software. This tells the R280 Series what you're printing on, so the ink coverage can be adjusted accordingly.

For this paper/media	Select this setting
Plain paper Epson Bright White Paper	Plain Paper/Bright White Paper
Epson Ultra Premium Photo Paper Glossy	Ultra Premium Photo Paper Glossy
Epson Premium Photo Paper Glossy	Premium Photo Paper Glossy
Epson Photo Paper Glossy	Photo Paper Glossy
Epson Presentation Paper Matte	Presentation Paper Matte
Epson Premium Photo Paper Semi-gloss	Premium Photo Paper Semi-gloss
Epson Ultra Premium Photo Paper Luster	Ultra Premium Photo Paper Luster

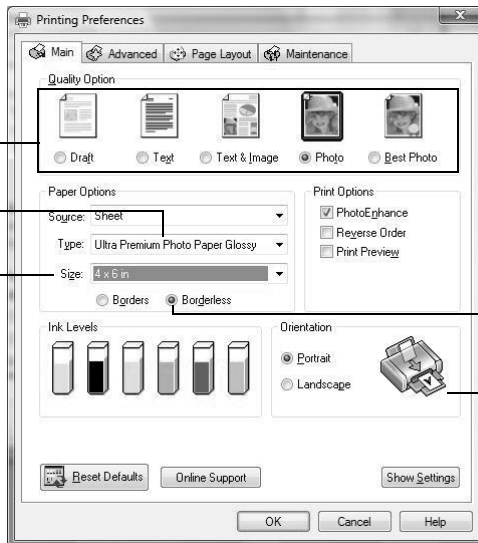
For this paper/media	Select this setting
Epson Premium Presentation Paper Matte Epson Premium Presentation Paper Matte Double-sided Epson Photo Quality Self-adhesive Sheets Epson Iron-on Cool Peel Transfer Paper	Premium Presentation Paper Matte
Ink jet-printable CDs and DVDs	CD/DVD CD/DVD Premium Surface
Envelopes	Envelope

## Printing Borderless Photos

You can print your photos with no margins, extending the image all the way to the edges of the page. Be sure to select these settings when printing borderless photos:

Select **Photo** or **Best Photo**

Select your  
paper **Type**  
Select your  
paper **Size**



Click here for  
borderless photos

Select your document  
**Orientation**

### Tip:

The **PhotoEnhance** option is automatically selected when printing on certain photo papers. See page 8 for more information on PhotoEnhance.

For detailed instructions on printing borderless photos and a list of borderless paper types and sizes, see the on-screen *User's Guide*.

# Printing on CDs and DVDs

Your printer includes a special tray that lets you print customized text, graphics, and photos directly on an ink jet-printable CD or DVD. The Epson Print CD software makes it easy to import your own photos, add text, and modify your designs with a variety of special effects. For detailed instructions on printing, see the on-screen *User's Guide*. You can print on both regular 12-cm and 8-cm mini CDs and DVDs.

## Caution:

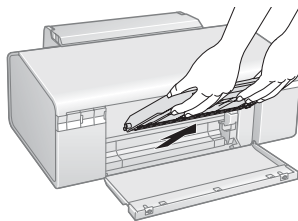
Use only one ink jet-printable CD or DVD at a time. Thermal-printable and regular CDs and DVDs should not be used with this printer; otherwise the ink may smear.

Do not turn the printer on or off with a CD or DVD inserted.

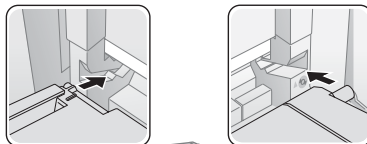
Make sure the data, music, or video is burned on your ink jet-printable CDs or DVDs before you print. Otherwise, dirt or scratches on the surface may cause errors when you burn the data.

Before you insert a CD or DVD, make sure the printer is turned on. Otherwise, the disc may not be positioned correctly. Then follow these steps:

1. Open the front cover.
2. Lift the front tray up with both hands, then pull it out of the paper position (lower notches).



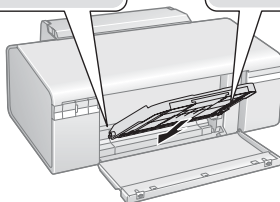
3. Set the front tray in the CD/DVD position (upper notches).
4. Place the CD or DVD on the CD/DVD tray with the white or printable side face-up. Make sure the disc lies flat in the tray.



## Caution:

Before you position the CD or DVD, make sure that no dust or dirt is on the CD/DVD tray, as this may damage the disc's data side.

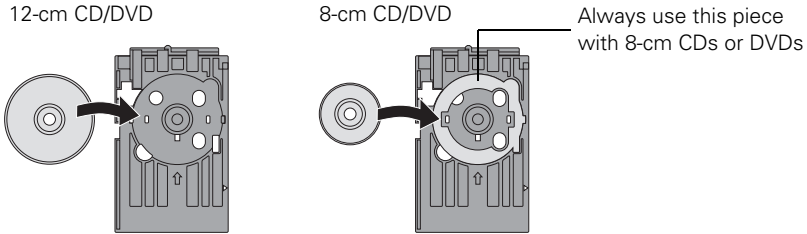
Be sure to use the CD/DVD tray provided with this printer. If you use another CD/DVD tray, your CD or DVD may not print correctly.



To print on a small CD or DVD (8-cm), place the small CD/DVD adapter on the tray first, then place the CD or DVD inside the adapter.

**Caution:**

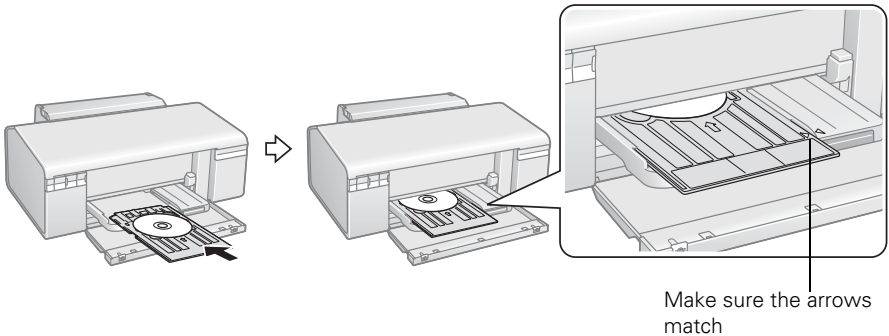
Make sure you always use the small CD/DVD adapter when you print on 8-cm CDs or DVDs and that the CD or DVD and adapter lie flat on the tray; otherwise the printer may be damaged.



5. Firmly insert the CD/DVD tray along the base of the front tray until it meets resistance. Continue sliding the tray into the printer until the arrows on the CD/DVD tray and the front tray are aligned.

**Caution:**

Make sure both sides of the CD/DVD tray slide into the brackets on the front tray. Do not insert the CD/DVD tray while the printer is printing; otherwise, your printer may be damaged or the surface of the CD or DVD may become dirty or scratched.



6. To design and print with Epson Print CD, follow the detailed instructions in in the on-screen *User's Guide*.

**Caution:**

Be sure to place the front tray in the paper (lower) position when you're done printing on CDs and DVDs.

# Maintaining Your Printer

Follow the instructions in this chapter for checking and cleaning the print head nozzles and replacing ink cartridges.

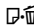


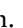

## Tip:

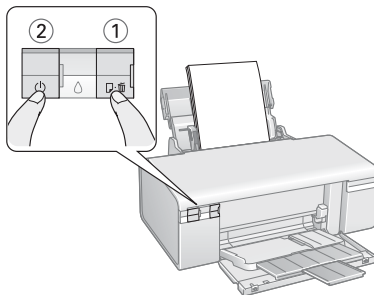
To keep your Epson product looking like new, make sure you don't place anything on top of the cover or use it as a writing surface. If you need to clean the cover, use only a soft, nonabrasive microfiber-type cloth.

---

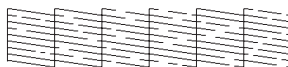
## Checking the Print Head Nozzles

If your printouts are faint or have gaps in them, some of the nozzles in the print head may be clogged or ink may be running low in one or more of the ink cartridges. Follow the steps below to check the print head nozzles.

1. Turn off the printer and make sure the front tray is in the paper position.
2. Load letter-size paper in the sheet feeder.
3. Hold down the  paper button as you press the  power button. Hold down both buttons until the  power light begins to flash, then release the  power button.
4. When the nozzle check pattern starts to print, release the  paper button. Check the nozzle check pattern that prints to see if there are gaps in the lines.



Nozzles are clean



Nozzles need cleaning

5. If there are no gaps, the print head is clean and you can continue printing. If there are gaps or the pattern is faint, clean the print head (see page 16).

---

# Cleaning the Print Head

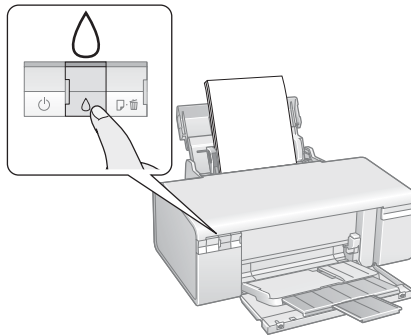
If print quality has declined and the nozzle check pattern indicates clogged nozzles, you can clean the print head.

**Note:**

Print head cleaning uses ink, so clean it only if necessary.

If the red  $\Delta$  ink light comes on or flashes, you cannot clean the print head. In this case, replace the appropriate ink cartridge first (see page 18).

1. Make sure the printer is on and the  $\Delta$  ink light is off.
2. Hold down the  $\Delta$  ink button for at least 3 seconds until the  $\mathcal{P}$  power light starts flashing, then release it. The printer runs a head cleaning cycle, which takes about one minute.



**Caution:**

Never turn off the R280 Series during a cleaning cycle or you may damage it.

3. When the  $\mathcal{P}$  power light stops flashing, run a nozzle check (as described on page 15) to verify that the print head is clean.
4. If there are still gaps or lines, or the test patterns are faint, run another cleaning cycle and check the nozzles again.

**Note:**

If print quality has not improved after repeating this procedure about four times, turn the printer off and wait for at least six hours. Then run the nozzle check again and repeat the head cleaning if necessary.

If you do not use your printer often, it is a good idea to print a few pages at least once a month to maintain good print quality.



---

## Checking the Ink Cartridge Status

When the red  $\Delta$  ink light starts flashing, one or more cartridges are low on ink and will need to be replaced soon. When the red  $\Delta$  ink light stays on, you need to replace the cartridge(s).

You can also check the ink level using Status Monitor (see the on-screen *User's Guide*).

### Caution:

You cannot print when an ink cartridge is expended, even if other cartridges are not expended. Leave the expended cartridge(s) installed until you have obtained a replacement, or the ink remaining in the print head nozzle may dry out.

A window may appear on your computer screen if you try to print when ink is low. On a Windows computer that is connected to the Internet, you may see a screen asking if you want to receive ink offers and other updates from Epson. Click **Accept** or **Decline** to continue.

### Note:

To disable checking for ink offers or updates from Epson, see the instructions in your on-screen *User's Guide*.

---

## Purchasing Epson Ink Cartridges

You can purchase genuine Epson ink and paper at Epson Supplies Central at [www.epson.com/ink3](http://www.epson.com/ink3) (U.S. sales) or [www.epson.ca](http://www.epson.ca) (Canadian sales). You can also purchase supplies from an Epson authorized reseller. To find the nearest one, call 800-GO-EPSON (800-463-7766).

Epson offers two different capacity cartridges for each color in your R280 Series.

Color	Standard capacity part number	High capacity part number
Black	78	77
Cyan	78	77
Magenta	78	77
Yellow	78	77
Light Cyan	78	77
Light Magenta	78	77

**Note:**

Try the High Capacity 77 cartridges available at <http://www.epson.com/highcapacity> (U.S. sales) or <http://www.epson.ca> (Canadian sales), or the 77 color multipack at your local reseller.

You may use any combination of cartridge sizes. (If you've installed a 78 black cartridge, you can still use a 77 magenta cartridge, for example.)

We recommend that you use genuine Epson cartridges and do not refill them. The use of other products may affect your print quality and could result in printer damage.

For best printing results, use up a cartridge within six months of opening the package.

Cartridge yields vary considerably based on images printed, print settings, paper type, frequency of use, and temperature. For print quality, a small amount of ink remains in the cartridge after the "replace cartridge" indicator comes on. The printer ships with full cartridges and part of the ink from the first cartridges is used for priming the printer.



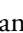

---

## Replacing Ink Cartridges

Make sure you have a new ink cartridge before you begin. You must install new cartridges immediately after removing the old ones.

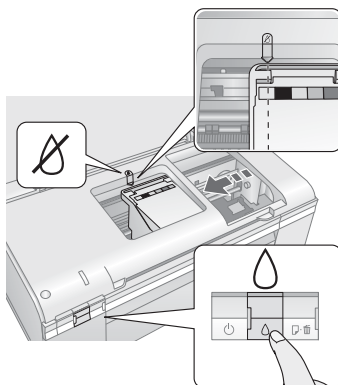
**Caution:**

Do not open ink cartridge packages until you are ready to install the ink. Cartridges are vacuum packed to maintain reliability.

1. Make sure the CD/DVD tray is not inserted in the printer, and make sure the front tray is in the paper (lower) position.
2. Make sure the printer is on and the  power light is on but not flashing.
3. Open the printer cover.
4. Press and release the  ink button. The  power light begins to flash and the print head moves to the  position to indicate which cartridge is low or expended.

**Note:**

If an ink cartridge is low, you may continue to use it until it is expended. To confirm the status of each ink cartridge, see your on-screen *User's Guide*.

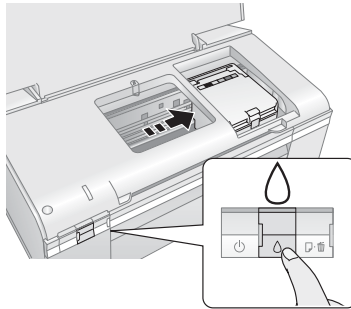


**Caution:**

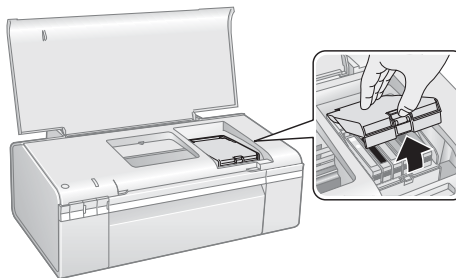
Do not move the print head by hand; this may damage your printer. Always press and release the  $\Delta$  ink button to move it. Be careful not to touch the white flat cable inside the printer.



5. Press the  $\Delta$  ink button again.
  - If another cartridge is low or expended, it moves to the  $\emptyset$  position. Press the  $\Delta$  ink button again to see if any more cartridges are low or expended.
  - If no other cartridges are low or expended, the print head moves to the replacement position.



6. Open the cartridge cover.



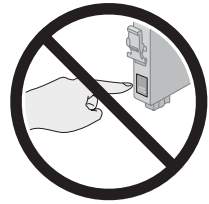
7. Remove the new ink cartridge from the package.

**Caution:**

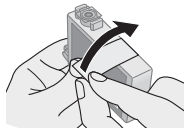
Be careful not to break the hooks on the front of the ink cartridge when you remove it from the package.

Do not touch the green chip on the front of the cartridge. This can damage the ink cartridge.

Always install an ink cartridge immediately after removing the old cartridge. If the cartridge is not installed promptly, the print head may dry out and be unable to print.

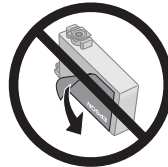


8. Remove the yellow tape from the bottom of the ink cartridge.

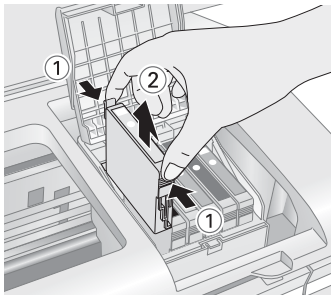


**Caution:**

Do not remove any other labels or seals, or ink will leak.



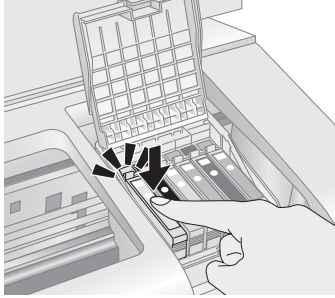
9. Squeeze the tab on the cartridge and lift it up. Dispose of it carefully. Do not take the used cartridge apart or try to refill it.



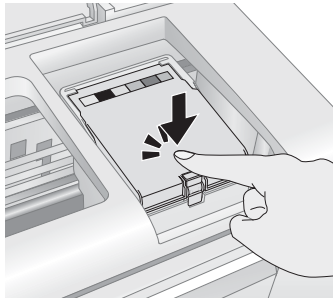
**Warning:**

If ink gets on your hands, wash them thoroughly with soap and water. If ink gets into your eyes, flush them immediately with water. Keep ink cartridges out of the reach of children.

10. Insert the new ink cartridge into the holder and push it down until it clicks into place.



11. Once you replace all the cartridges that need replacing, close the cartridge cover and push it down until it clicks into place.



12. Close the printer cover.
13. Press the  $\triangle$  ink button to begin charging the ink. This takes about one and a half minutes. When it's finished, the  $\odot$  power light stops flashing and remains on, and the  $\triangle$  ink light goes out.

**Caution:**

Never turn off the R280 Series while the  $\odot$  power light is flashing or you'll waste ink.

Wait until ink charging is complete before setting the front tray in the CD/DVD position.

# Solving Problems


If you have a problem with your printer, check the lights on the control panel to diagnose the cause. You can also check “Problems and Solutions” on page 23 for basic troubleshooting suggestions, or see your on-screen *User’s Guide* for more detailed help.

---

## Checking for Software Updates

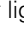
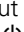

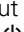
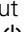
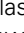
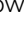
Periodically, it’s a good idea to check Epson’s support website for free updates to your Epson Stylus Photo R280 Series software. Open your on-screen *User’s Guide* and select **Download the Latest Software** or visit Epson’s support website at [epson.com/support](http://epson.com/support).




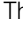

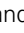
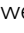
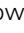
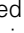


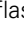
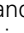


With Windows, you can select **Driver Update** on the **Maintenance** tab in the printer settings window. You can also click **Start** or , select **Programs** or **All Programs**, select **EPSON**, and click **EPSON Stylus Photo R280 Series Driver Update**.

---

## Error Indicators

Lights	Explanation
Green  power light flashes	The printer is receiving a print job, replacing an ink cartridge, charging ink, or cleaning the print head.
Red  paper out light is on and green  power light flashes	If you’re printing on paper, your paper ran out. Load more paper and press the  paper button to resume printing. If you’re printing on a CD or DVD, the CD/DVD tray is not inserted. Follow the instructions beginning on page 13 to insert the tray, then press the  paper button.
Red  ink light flashes and Green  power light is on	One of the cartridges is nearly expended. Check the message that appears on your screen to determine which cartridge is nearly expended or follow the instructions in “Checking the Ink Cartridge Status” on page 17. Make sure you have a replacement cartridge.

Lights	Explanation
Red  paper out light and green  power light flash	<p>If you're printing on paper, it is jammed in the printer. Press the  paper button to eject the paper. If that doesn't work, turn off the printer, open the cover, and pull the paper out from the front, including any torn pieces. Then turn on the printer, reload paper, and press the  paper button.</p> <p>If you're printing on a CD or DVD, the CD/DVD tray has not ejected. Pull out the tray and press the  paper button.</p>
Red  ink light and green  power light are on	<p>One of the cartridges is expended or not installed. Make sure you have a replacement cartridge, then follow the steps in "Replacing Ink Cartridges" on page 18 to install it.</p> <p>If you have just installed a new cartridge, it may be incompatible with the printer or incorrectly installed. Reinstall it or replace it with the correct cartridge, as described on page 18.</p>
Green  power light is off; red  paper out and  ink lights flash	<p>Paper may be blocking movement of the print head. Turn off the printer, then open the cover and remove any jammed paper or other foreign objects. Turn the printer back on again. If the lights are still on, contact Epson as described in "Where To Get Help" on page 25.</p>
Red  paper out and red  ink lights flash alternately and green  power light is off	<p>The printer may have an internal error. Turn off the printer, wait a few seconds, and turn it on again. If the lights are still flashing, contact Epson as described in "Where To Get Help" on page 25.</p>

## Problems and Solutions

Check the solutions below if you're having trouble using your R280 Series.

### Printing Problems

- Make sure your paper is loaded short edge first and is positioned against the right side with the edge guide against its left side. Don't load paper above the arrow mark inside the edge guide.
- Make sure the paper size settings are correct for the paper you loaded.
- Load paper with the printable side facing the front of the printer.
- Make sure the front tray is in the correct position for paper or CD/DVD printing.

## ***Paper Feeding Problems***

- If paper doesn't feed, remove it from the sheet feeder. Flip through the stack to separate the sheets a little. Then reload the paper against the right side, and slide the edge guide against the paper (but not too tightly).
- Do not load too many sheets at once—up to 20 sheets of photo paper and 120 sheets of plain paper. Load other special papers one sheet at a time.
- Use new, smooth, high-quality paper, loaded printable side up. Make sure the paper is not curled, creased, wrinkled, too thin, or too old.
- If the paper is stuck inside the printer, turn the printer off and open the printer cover, then remove all of the paper inside, including any torn pieces. Close the printer cover. If paper remains near the sheet feeder, gently pull it out. Then turn the printer back on and carefully reload paper.

## ***Print Quality Problems***

If you have any problems with the print quality, try these solutions:

- Load the paper printable side up (usually the whiter, brighter, or glossy side).
- Make sure your paper isn't damp or curled.
- Use a support sheet with special paper or load your paper one sheet at a time. Remove sheets from the front tray so not too many collect at a time.
- Make sure the type of paper you loaded matches the paper size and paper type settings in your printer software (see page 11).
- For the best print quality, use Epson papers (see page 5) and genuine Epson ink cartridges (see page 18).
- If you notice light or dark bands across your printouts or they are too faint, you may need to clean the print head. This unclogs the nozzles so they can deliver ink properly. Run a nozzle check as described on page 15 to see if the print head needs cleaning.
- Clean the print head as described on page 16.
- If you notice jagged vertical lines, you may need to align the print head. See your on-screen *User's Guide* for instructions.
- The ink cartridges may be low on ink (see page 18 for instructions on checking and replacing an ink cartridge).



---

# Where To Get Help

## ***Epson Technical Support***

### **Internet Support**

Visit Epson's support website at [epson.com/support](http://epson.com/support) and select your product for solutions to common problems. You can download drivers and documentation, get FAQs and troubleshooting advice, or e-mail Epson with your questions.

### **Speak to a Support Representative**

Before you call Epson for support, please have the following information ready:

- Product name (Epson Stylus Photo R280 Series)
- Product serial number (located on the label in back)
- Proof of purchase (such as a store receipt) and date of purchase
- Computer configuration
- Description of the problem

Then call:

- U.S.: (562) 276-7282, 6 AM to 8 PM, Pacific Time, Monday through Friday, and 7 AM to 4 PM Saturday.
- Canada: (905) 709-2567, 6 AM to 6 PM, Pacific Time, Monday through Friday.

Toll or long distance charges may apply.

## ***Purchase Supplies and Accessories***

You can purchase genuine Epson ink and paper at Epson Supplies Central at [www.epson.com/ink3](http://www.epson.com/ink3) (U.S. sales) or [www.epson.ca](http://www.epson.ca) (Canadian sales). You can also purchase supplies from an Epson authorized reseller. To find the nearest one, call 800-GO-EPSON (800-463-7766).

## ***Other Software Technical Support***

ArcSoft PhotoImpression™: (510) 440-9901, web: [www.arcsoft.com](http://www.arcsoft.com)

# Notices

---

## Important Safety Instructions

Before using your Epson Stylus Photo R280 Series, read and follow these safety instructions:

- Be sure to follow all warnings and instructions marked on the R280 Series.
- Use only the type of power source indicated on the R280 Series label.
- Use only the power cord that comes with the R280 Series. Use of another cord may cause fires or shock. Do not use the cord with any other equipment.
- Place the R280 Series near a wall outlet where the plug can be easily unplugged.
- Do not let the power cord become damaged or frayed.
- If you use an extension cord with the R280 Series, make sure the total ampere rating of the devices plugged into the extension cord does not exceed the cord's ampere rating. Also, make sure the total ampere rating of all devices plugged into the wall outlet does not exceed the wall outlet's ampere rating.
- Avoid locations that are subject to rapid changes in heat or humidity, shocks or vibrations, or dust.
- Leave enough room around the R280 Series for sufficient ventilation. Do not block or cover openings in the R280 Series case or insert objects through the slots.
- Do not place the R280 Series near a radiator or heating vent or in direct sunlight.
- Place the R280 Series on a flat, stable surface that extends beyond its base in all directions. It will not operate properly if it is tilted or at an angle.
- Make sure the back of the R280 Series is at least 4 inches (10 cm) away from the wall.
- Do not spill liquid on the R280 Series.
- Except as specifically explained in your documentation, do not attempt to service the R280 Series yourself.
- Unplug the R280 Series and refer servicing to qualified service personnel under the following conditions: if the power cord or plug is damaged; if liquid has entered the product; if the product has been dropped or the case damaged; if the product does not operate normally or exhibits a distinct change in performance. Adjust only those controls that are covered by the operating instructions.
- When storing or transporting the R280 Series, do not tilt it, stand it on its side, or turn it upside down; otherwise ink may leak from the cartridges.

# ***Ink Cartridge Safety Instructions***

- Keep ink cartridges out of the reach of children and do not drink the ink.
- Be careful when you handle used ink cartridges; there may be ink remaining around the ink supply port. If ink gets on your skin, wash it off with soap and water. If it gets in your eyes, flush them immediately with water.
- Do not put your hand inside the R280 Series or touch any cartridges during printing.
- Install a new ink cartridge immediately after removing an expended one. Leaving cartridges uninstalled can dry out the print head and may prevent the R280 Series from printing.
- If you remove an ink cartridge for later use, protect the ink supply area from dirt and dust and store it in the same environment as the R280 Series. Note that there is a valve in the ink supply port, making covers or plugs unnecessary, but care is needed to prevent the ink from staining items that the cartridge touches. Do not touch the ink cartridge ink supply port or surrounding area.

---

## **Declaration of Conformity**

According to 47CFR, Part 2 and 15 for: Class B Personal Computers and Peripherals; and/or CPU Boards and Power Supplies used with Class B Personal Computers:

We: Epson America, Inc.  
Located at: MS 3-13  
3840 Kilroy Airport Way  
Long Beach, CA 90806  
Telephone: (562) 290-5254

Declare under sole responsibility that the product identified herein, complies with 47CFR Part 2 and 15 of the FCC rules as a Class B digital device. Each product marketed is identical to the representative unit tested and found to be compliant with the standards. Records maintained continue to reflect the equipment being produced can be expected to be within the variation accepted, due to quantity production and testing on a statistical basis as required by 47CFR §2.909. Operation is subject to the following two conditions: (1) this device may not cause harmful interference, and (2) this device must accept any interference received, including interference that may cause undesired operation.

Trade Name: Epson  
Type of Product: Ink Jet Printer  
Model: B412A

---

# FCC Compliance Statement

## ***For United States Users***

This equipment has been tested and found to comply with the limits for a Class B digital device, pursuant to Part 15 of the FCC Rules. These limits are designed to provide reasonable protection against harmful interference in a residential installation. This equipment generates, uses, and can radiate radio frequency energy and, if not installed and used in accordance with the instructions, may cause harmful interference to radio or television reception. However, there is no guarantee that interference will not occur in a particular installation. If this equipment does cause interference to radio and television reception, which can be determined by turning the equipment off and on, the user is encouraged to try to correct the interference by one or more of the following measures:

- Reorient or relocate the receiving antenna.
- Increase the separation between the equipment and receiver.
- Connect the equipment into an outlet on a circuit different from that to which the receiver is connected.
- Consult the dealer or an experienced radio/TV technician for help.

## ***WARNING***

The connection of a non-shielded equipment interface cable to this equipment will invalidate the FCC Certification of this device and may cause interference levels which exceed the limits established by the FCC for this equipment. It is the responsibility of the user to obtain and use a shielded equipment interface cable with this device. If this equipment has more than one interface connector, do not leave cables connected to unused interfaces. Changes or modifications not expressly approved by the manufacturer could void the user's authority to operate the equipment.

## ***For Canadian Users***

This Class B digital apparatus complies with Canadian ICES-003.

*Cet appareil numérique de la classe B est conforme à la norme NMB-003 du Canada.*

---

# Epson America, Inc., Limited Warranty

**What Is Covered:** Epson America, Inc. (“Epson”) warrants to the original retail purchaser that the Epson printer covered by this limited warranty statement, if purchased and operated only in the United States or Canada, will be free from defects in workmanship and materials for a period of one (1) year from the date of original purchase. For warranty service, you must provide proof of the date of original purchase.

**What Epson Will Do To Correct Problems:** Should your Epson printer prove defective during the warranty period, please call the Epson Connection<sup>SM</sup> at (562) 276-7282 (U.S.) or (905) 709-2567 (Canada) for warranty repair instructions and return authorization. An Epson service technician will provide telephone diagnostic service to determine whether the printer requires service. If service is needed, Epson will, at its option, exchange or repair the printer without charge for parts or labor. If Epson authorizes an exchange for the defective unit, Epson will ship a replacement printer to you, freight prepaid, so long as you use an address in Canada or the U.S. (excluding Puerto Rico and U.S. Possessions). Shipments to other locations will be made freight collect. You are responsible for securely packaging the defective unit and returning it to Epson within five (5) working days of receipt of the replacement. Epson requires a debit or a credit card number to secure the cost of the replacement printer in the event that you fail to return the defective one. If your printer is being repaired, Epson will direct you to send your printer to Epson or its authorized service center, where the printer will be fixed and sent back to you. You are responsible for packing the printer and for all costs to and from the Epson authorized service center. When warranty service involves the exchange of the printer or a part, the item replaced becomes Epson property. The replacement printer or part may be new or refurbished to the Epson standard of quality, and, at Epson’s option, may be another model of like kind and quality. Epson liability for replacement of the covered printer will not exceed the original retail selling price of the covered printer. Exchange products and parts assume the remaining warranty period of your original product covered by this limited warranty.

**What This Warranty Does Not Cover:** This warranty covers only normal use in the United States and Canada. Using this product for continuous production or similar high duty purposes is not considered normal use; damage, maintenance or service from such use will not be covered under this warranty. This warranty is not transferable. This warranty does not cover any color change or fading of prints or reimbursement of materials or services required for reprinting. This warranty does not cover damage to the Epson product caused by parts or supplies not manufactured, distributed or certified by Epson. This warranty does not cover ribbons, ink cartridges or third party parts, components, or peripheral devices added to the Epson product after its shipment from Epson, e.g., dealer or user-added boards or components. Epson is not responsible for warranty service should the Epson label or logo or the rating label or serial number be removed or should the product fail to be properly maintained or fail to function properly as a result of misuse,

abuse, improper installation, neglect, improper shipping, damage caused by disasters such as fire, flood, and lightning, improper electrical current, software problems, interaction with non-Epson products, or service other than by an Epson Authorized Servicer. If a claimed defect cannot be identified or reproduced, you will be held responsible for the costs incurred.

THE WARRANTY AND REMEDY PROVIDED ABOVE ARE EXCLUSIVE AND IN LIEU OF ALL OTHER EXPRESS OR IMPLIED WARRANTIES INCLUDING, BUT NOT LIMITED TO, THE IMPLIED WARRANTIES OF MERCHANTABILITY, NON-INFRINGEMENT OR FITNESS FOR A PARTICULAR PURPOSE. SOME LAWS DO NOT ALLOW THE EXCLUSION OF IMPLIED WARRANTIES. IF THESE LAWS APPLY, THEN ALL EXPRESS AND IMPLIED WARRANTIES ARE LIMITED TO THE WARRANTY PERIOD IDENTIFIED ABOVE. UNLESS STATED HEREIN, ANY STATEMENT OR REPRESENTATIONS MADE BY ANY OTHER PERSON OR FIRM ARE VOID. EXCEPT AS PROVIDED IN THIS WRITTEN WARRANTY, NEITHER EPSON AMERICA, INC. NOR ITS AFFILIATES SHALL BE LIABLE FOR ANY LOSS, INCONVENIENCE, OR DAMAGE, INCLUDING DIRECT, SPECIAL, INCIDENTAL OR CONSEQUENTIAL DAMAGES, RESULTING FROM THE USE OR INABILITY TO USE THE EPSON PRODUCT, WHETHER RESULTING FROM BREACH OF WARRANTY OR ANY OTHER LEGAL THEORY.

In Canada, warranties include both warranties and conditions.

Some jurisdictions do not allow limitations on how long an implied warranty lasts, and some jurisdictions do not allow the exclusion or limitation of incidental or consequential damages, so the above limitations and exclusions may not apply to you. This warranty gives you specific legal rights and you may have other rights which vary from jurisdiction to jurisdiction.

To find the Epson Authorized Reseller nearest you, visit our website at:  
<http://www.epson.com>.

To find the Epson Customer Care Center nearest you, visit  
<http://www.epson.com/support>.

You can also write to:  
Epson America, Inc., P.O. Box 93012, Long Beach, CA 90809-3012

---

# Copyright Notice

All rights reserved. No part of this publication may be reproduced, stored in a retrieval system, or transmitted in any form or by any means, electronic, mechanical, photocopying, recording, or otherwise, without the prior written permission of Seiko Epson Corporation. The information contained herein is designed only for use with this Epson product. Epson is not responsible for any use of this information as applied to other equipment.

Neither Seiko Epson Corporation nor its affiliates shall be liable to the purchaser of this product or third parties for damages, losses, costs, or expenses incurred by purchaser or third parties as a result of: accident, misuse, or abuse of this product or unauthorized modifications, repairs, or alterations to this product, or (excluding the U.S.) failure to strictly comply with Seiko Epson Corporation's operating and maintenance instructions.

Seiko Epson Corporation shall not be liable for any damages or problems arising from the use of any options or any consumable products other than those designated as Original Epson Products or Epson Approved Products by Seiko Epson Corporation.

## Responsible Use of Copyrighted Materials

Epson encourages each user to be responsible and respectful of the copyright laws when using any Epson product. While some countries' laws permit limited copying or reuse of copyrighted material in certain circumstances, those circumstances may not be as broad as some people assume. Contact your legal advisor for any questions regarding copyright law.

## Trademarks

Epson and Epson Stylus are registered trademarks and Exceed Your Vision is a trademark of Seiko Epson Corporation.

BorderFree is a registered trademark, PhotoEnhance is a trademark, and Epson Connection and Supplies Central are service marks of Epson America, Inc.

General Notice: Other product names used herein are for identification purposes only and may be trademarks of their respective owners. Epson disclaims any and all rights in those marks.



**EPSON®**  
EXCEED YOUR VISION



\*411027500\*

CPD-23763  
Printed in XXXXXX XX.XX-XX XXX