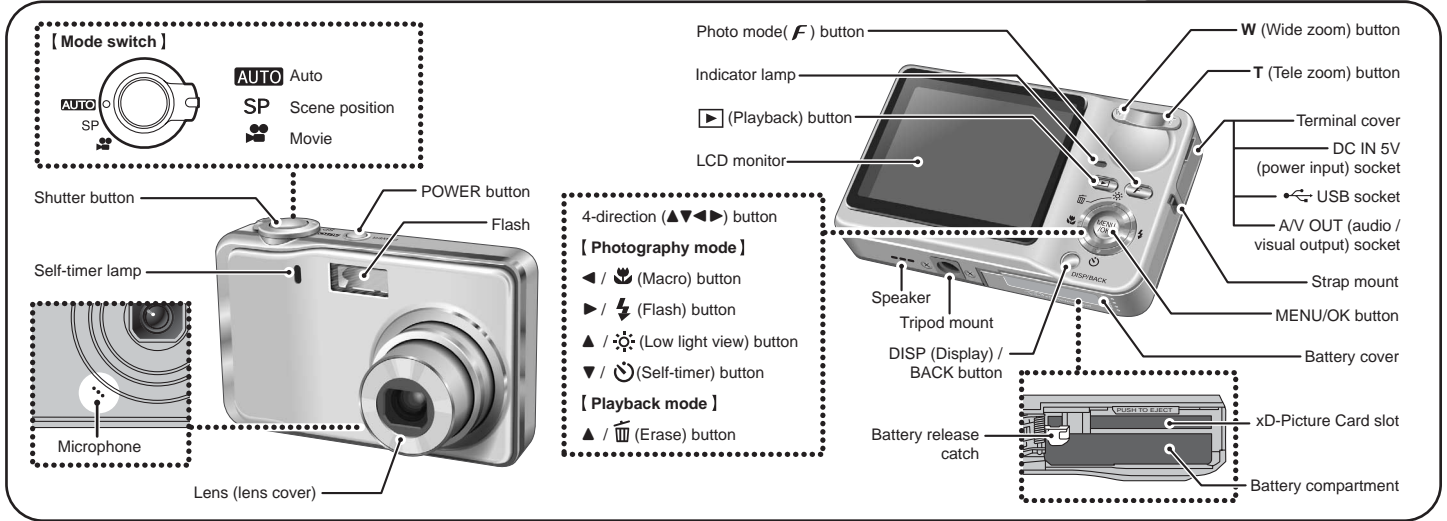


FinePix F470 Quickstart

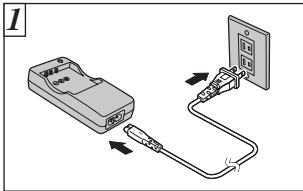
Camera Controls



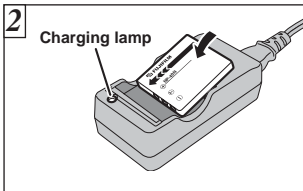
BL00534-200(1) E

Picture Taking

A. Charging the battery

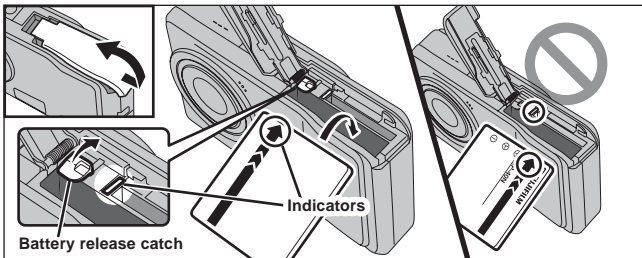


1. Plug the Battery Charger BC-40 (included) into the power outlet using the connection cord.



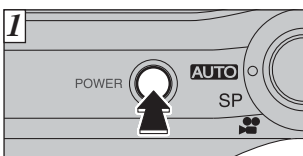
2. Load the battery into the Battery Charger BC-40 correctly as indicated by the polarity icon to start charging. Charging ends after about 90 minutes and the charging lamp turns off. Unplug the battery charger from the power outlet when it is not in use.

B. Loading the battery



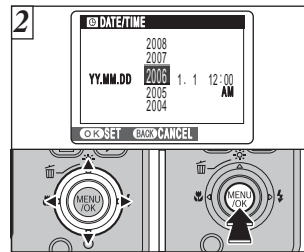
Hold the battery so that the indicators are aligned before loading the battery. Push the battery release catch aside while loading the battery.

C. Setting up the camera



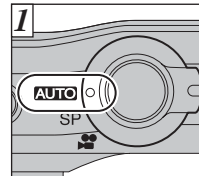
1. Press the "POWER" button to turn the camera on.

Refer to Owner's Manual for more detailed instructions

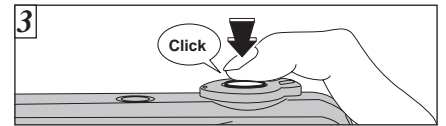
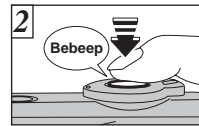


2. You can select your preferred date format. Press "◀" or "▶" to select the date format, Year, Month, Day, Hour or Minute. Press "▲" or "▼" to correct the setting. Press the "MENU/OK" button after you complete the setting. *Refer to owner's manual for date/time setup.

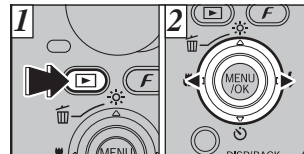
D. Taking pictures



1. Set the Mode switch to "AUTO".
2. Press the shutter button halfway to adjust the focus.
3. Press the shutter button fully to take a picture. The camera makes a "Click" sound and takes the picture.



E. Viewing pictures



1. Press the "▶" button.
2. Press "◀" or "▶" to move through your images.

FinePix F470 has internal memory that can store images without xD-Picture Card. Use an xD-Picture Card (sold separately) when recording a large number of images.

Still images that can be viewed on FinePix F470

You can use this camera to view still images recorded on FinePix F470 or still images (excluding some uncompressed images) recorded on a FUJIFILM digital camera that supports xD-Picture Card.

Viewing images on your PC

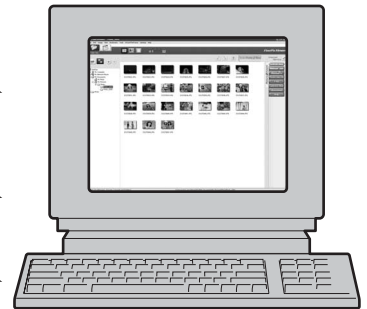


A. Install Software



B. Connect a Camera to PC

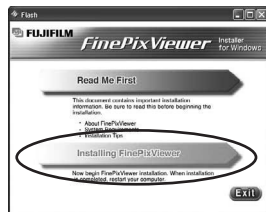
C. Save Images



A. Install Software

Do not connect the camera to your PC until the software installation is completed.

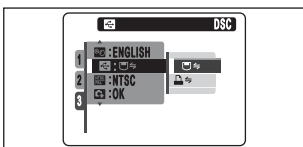
1. Turn on your PC and start up Windows.
 - Users of Windows 2000 Professional or Windows XP should log in by using a system administrator account (e.g. "Administrator").
2. Quit all other active applications until no applications are shown in the taskbar.
3. Load the enclosed CD-ROM into the CD-ROM drive. The installer starts up automatically.
4. The Setup screen appears. Click the [Installing FinePixViewer] button.



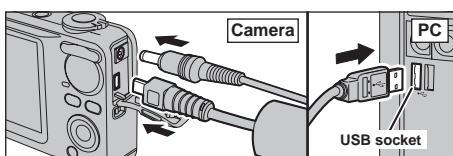
5. After installation completed, press [Close] button.

B. Connect the Camera to your PC

1. Load an **xD-Picture Card** containing photographed images into your camera.
2. Press the "▶" button for about 1 second to turn the camera on in Playback mode. Select "DSC" in "USB MODE" in the "SET-UP" menu (Refer to "USING THE SET-UP SCREEN" in the owner's manual).



3. Turn your camera off.
4. If you have one, plug the AC power adapter connector into the "DC IN 5V" socket on the camera and then plug the adapter itself into the main power outlet, otherwise be sure your battery is fresh and charged.
5. Turn your PC on.
6. Connect the camera to the PC using the USB cable (included).



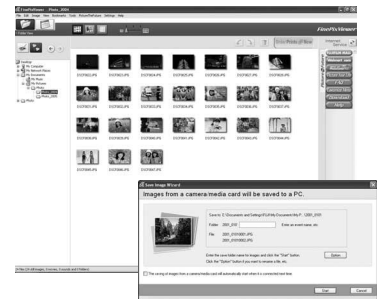
7. Press the "▶" button for about 1 second to turn the camera on in Playback mode.



8. Windows 98/98 SE/Me/2000 Professional
FinePixViewer starts up automatically.

Windows XP

The "Found New Hardware" help message appears in the bottom-right corner of your screen. This message will close when the settings are completed. No action is required. FinePixViewer starts up automatically.



C. Save Images

1. The Save image Wizard starts up. Click the [Start] button.
2. Check that the files are downloaded from the camera to your PC and that a folder with the date is created.
Ex. \My Documents \ My Pictures \ 2006_0224

D. View Images

1. Click the [Show List of Images] button.



2. Select "Preview" in the View menu to display an enlarged image.

For more information

Refer to "How to use FinePixViewer" in the HELP menu, or chapter 5 and 6 in the Owner's Manual, or visit Fujifilm "Q&A Search" in the following website.

(<http://home.fujifilm.com/products/digital/>)

For Macintosh users, refer to chapter 5 and 6 in the Owner's Manual.