



HG630 Home Gateway

## **User Guide**



HG630 Home Gateway  
V100R001

## User Guide

202531\_02

Huawei Technologies Co., Ltd. provides customers with comprehensive technical support and service. Please feel free to contact our local office or company headquarters.

### Huawei Technologies Co., Ltd.

Address: Huawei Industrial Base  
Bantian, Longgang  
Shenzhen 518129  
People's Republic of China

Website: <http://consumer.huawei.com/en>

## **Copyright © Huawei Technologies Co., Ltd. 2015. All rights reserved.**

No part of this manual may be reproduced or transmitted in any form or by any means without prior consent of Huawei Technologies Co., Ltd. and its affiliates ("Huawei").

The product described in this manual may include copyrighted software of Huawei and possible licensors. Customers shall not in any manner reproduce, distribute, modify, decompile, disassemble, decrypt, extract, reverse engineer, lease, assign, or sublicense the said software, unless such restrictions are prohibited by applicable laws or such actions are approved by respective copyright holders.

## **Trademarks and Permissions**



HUAWEI, HUAWEI, and



are trademarks or registered trademarks of Huawei Technologies Co., Ltd.

Other trademarks, product, service and company names mentioned may be the property of their respective owners.

## **Notice**

Some features of the product and its accessories described herein rely on the software installed, capacities and settings of local network, and therefore may not be activated or may be limited by local network operators or network service providers.

Thus, the descriptions herein may not exactly match the product or its accessories which you purchase. Huawei reserves the right to change or modify any information or specifications contained in this manual without prior notice and without any liability.

## **DISCLAIMER**

ALL CONTENTS OF THIS MANUAL ARE PROVIDED "AS IS". EXCEPT AS REQUIRED BY APPLICABLE LAWS, NO WARRANTIES OF ANY KIND, EITHER EXPRESS OR IMPLIED, INCLUDING BUT NOT LIMITED TO, THE IMPLIED WARRANTIES OF MERCHANTABILITY AND FITNESS FOR A PARTICULAR PURPOSE, ARE MADE IN RELATION TO THE ACCURACY, RELIABILITY OR CONTENTS OF THIS MANUAL.

TO THE MAXIMUM EXTENT PERMITTED BY APPLICABLE LAW, IN NO EVENT SHALL HUAWEI BE LIABLE FOR ANY SPECIAL, INCIDENTAL, INDIRECT, OR CONSEQUENTIAL DAMAGES, OR LOSS OF PROFITS, BUSINESS, REVENUE, DATA, GOODWILL SAVINGS OR ANTICIPATED SAVINGS REGARDLESS OF WHETHER SUCH LOSSES ARE FORSEEABLE OR NOT.

THE MAXIMUM LIABILITY (THIS LIMITATION SHALL NOT APPLY TO LIABILITY FOR PERSONAL INJURY TO THE EXTENT APPLICABLE LAW PROHIBITS SUCH A LIMITATION) OF HUAWEI FROM THE USE OF THE PRODUCT DESCRIBED IN THIS MANUAL SHALL BE LIMITED TO THE AMOUNT PAID BY CUSTOMERS FOR THE PURCHASE OF THIS PRODUCT.

## **Import and Export Regulations**

Customers shall comply with all applicable export or import laws and regulations and be responsible to obtain all necessary governmental permits and licenses in order to export, re-export or import the product mentioned in this manual including the software and technical data therein.

## **Privacy Policy**

To better understand how we protect your personal information, please see the privacy policy at <http://consumer.huawei.com/privacy-policy>.

## **ErP Product Information**

Hereby, Huawei Technologies Co.,Ltd. declares that the product meets the directive 2009/125/EC and its implementation regulation (EC) NO 1275/2008 amended by (EC) 278/2009, (EC) 642/2009, (EU) 617/2013, (EU) 801/2013, and its implementation regulation (EC) NO 278/2009.

The power consumption of product in networked standby if all wired network ports are connected and all wireless network ports are activated is 6.9 W.

For the product information displayed on the manufacturers' freely accessible websites required by (EU) No 801/2013, please visit <http://consumer.huawei.com/certification>.

# Contents

|  |           |
|--|-----------|
| <b>1 Connecting the Cables and Getting Started .....</b>                                   | <b>1</b>  |
| 1.1 Connecting Cables Using the DSL Port.....  | 1         |
| 1.2 Connecting Cables Using the USB Port .....   | 2         |
| <b>2 Setting Network Access Parameters .....</b>   | <b>3</b>  |
| 2.1 Logging In to the Web-based Configuration Utility .....                                | 3         |
| 2.2 Configuring a Dial-up Connection for Internet Access .....                             | 4         |
| <b>3 Setting Up a Wireless Connection .....</b>  | <b>5</b>  |
| 3.1 Setting Up a Wireless Connection With the WPS Button .....                             | 6         |
| 3.2 Setting Up a Wireless Connection Manually.....   | 6         |
| <b>4 Maintenance Guide .....</b>   | <b>8</b>  |
| 4.1 Changing the User Name and Password for the Web-based<br>Configuration Utility .....   | 8         |
| 4.2 Enabling or Disabling the Wireless Network Function .....                              | 9         |
| 4.3 Changing the Wireless Network Name and Password .....                                  | 9         |
| 4.4 View and Configure the PIN.....  | 10        |
| 4.5 Configuring the Firewall .....   | 11        |
| 4.6 Changing the IP Address Used to Log In to the Web-based<br>Configuration Utility ..... | 12        |
| 4.7 Restoring Default Settings .....   | 12        |
| <b>5 Applications Guide.....</b>   | <b>13</b> |
| 5.1 Accessing a Portable Storage Device Using the FTP Client....                           | 13        |
| 5.2 Allowing Internet Users to Access an Internal Resource Server<br>.....                 | 14        |
| <b>6 FAQs .....</b>  | <b>16</b> |

|                                    |           |
|------------------------------------|-----------|
| <b>7 Appendix</b> .....            | <b>20</b> |
| 7.1 Indicators.....                | 20        |
| 7.2 Ports and Buttons.....         | 22        |
| 7.3 Default Settings.....          | 24        |
| 7.4 Technical Specifications ..... | 24        |

# 1 Connecting the Cables and Getting Started

---

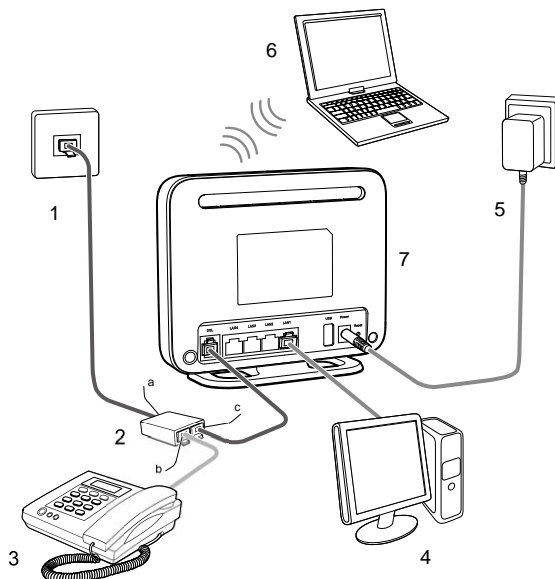
Thank you for purchasing the HG630 Home Gateway (hereinafter referred to as the HG630).

You can go online using the DSL and USB modem services.

## 1.1 Connecting Cables Using the DSL Port

### Connecting Cables

If your home has opened the DSL broadband service, you can go online through telephone wall jack. The following figure shows an example of how to connect the cables. In this example, the HG630 is connected to a desktop computer, a laptop computer, and a telephone.

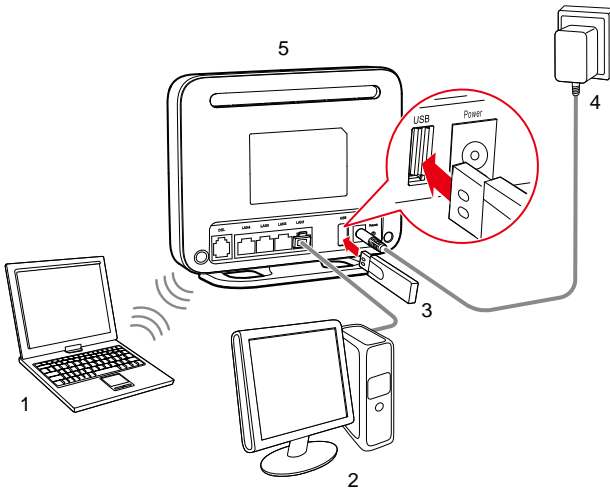


- |                        |                        |                        |
|------------------------|------------------------|------------------------|
| 1. Telephone wall jack | 2. Splitter            | 3. Telephone           |
| 4. Desktop computer    | 5. Power adapter       | 6. Laptop computer     |
| 7. HG630               |                        |                        |
| a. Splitter LINE port  | b. Splitter PHONE port | c. Splitter MODEM port |

## 1.2 Connecting Cables Using the USB Port

### Connecting Cables

The following figure shows an example of how to connect the cables. In this example, the HG630 is connected to a desktop computer, a laptop computer, and a USB modem.



- |                    |                     |              |
|--------------------|---------------------|--------------|
| 1. Laptop computer | 2. Desktop computer | 3. USB modem |
| 4. Power adapter   | 5. HG630            |              |



- 
- HG630 supports USB modem of E220, E169, E176G, E180, E1690, E1820, E1780 and E660.
  - When you do not need to go online, remove the USB modem. Otherwise, your operator may continue to charge you for USB modem services.
- 

## Getting Started

After connecting the cables, press the **On/Off** button on the side of the HG630 to power on the HG630.

After you power on the HG630, the **Power** indicator turns on, this indicates that the HG630 is working properly.



---

To power off the HG630, press the **On/Off** button on the side panel, and then unplug the power adapter.

---

# 2 Setting Network Access Parameters

---

## 2.1 Logging In to the Web-based Configuration Utility

Most of the HG630 parameters are preset before delivery to meet common home application scenarios. To check the HG630's working status or configure certain advanced network functions, use the web-based configuration utility.

To log in to the web-based configuration utility:

- Step 1** Set up network access for your computer. Set the network connection of your computer to obtain an IP address automatically.



---

By default, the Dynamic Host Configuration Protocol (DHCP) function is enabled. The HG630 then assigns an IP address to your computer automatically. If you disable the DHCP function, please ensure that the IP address of the computer and that of the HG630 LAN port are in the same network segment to enable the computer to access the web-based configuration utility.

---



**Step 2** Open a web browser on your computer and ensure that the browser does not use any proxy servers.

Using Internet Explorer 8.0 as an example to ensure no proxy servers are used:

1. Choose **Tools > Internet Options**.
2. On the **Connections** tab of the **Internet Options** dialog box, click **LAN Settings**.
3. In the **Proxy server** area, ensure that **Use a proxy server for your LAN** is cleared. If **Use a proxy server for your LAN** is selected, clear **Use a proxy server for your LAN**, and then click **OK**.

**Step 3** Enter **http://192.168.1.1** in the address bar, and then press **Enter**.

**Step 4** Enter the user name (default is **user**) and password (default is **HuaweiUser**) in the **Username** and **Password** text boxes.

**Step 5** Click **Login**.



---

For security reasons or to make the password easy to remember, you can change the user name and password for the web-based configuration utility. For details, see section 4.1 "Changing the User Name and Password for the Web-based Configuration Utility".

---

After the system verifies your account information, the web-based configuration utility is displayed.

## 2.2 Configuring a Dial-up Connection for Internet Access

The HG630 works in routing mode by default. And the HG630 starts to set up a dial-up connection automatically after the startup. You can access the network after you power on your computer. You do not need to install any special dial-up software on your computer or perform dial-up operations on your computer.

To configure the HG630 and your computer for the network access, do as follows:

**Step 1** Log in to the HG630's web-based configuration utility.

**Step 2** Click **Setup Wizard** to display the **Wizard** tab.

**Step 3** Click **Next**.

**Step 4** In **WAN device**, select the type for your device, and then click **Next**.

- **ADSL** or **VDSL** device: enter the user name and password that are provided by your service provider in **User name** and **Password** text box.
- **UTMS** device: enter the APN and dial number that are provided by your service provider in **APN** and **Dial number** text box.



---

If your SIM card needs to verify the PIN, please see chapter 4.4 "View and Configure the PIN".

---

**Step 5** In **User name** and **Password**, enter the user name and password that are provided by your service provider, and then click **Next**.

**Step 6** In **SSID** and **WPA pre-shared key**, set a wireless network name and password, and then click **Next**.



---

The default wireless network name and password which are printed on the label of the HG630's rear panel are preset before delivery. They are unique and safe. If you do not want to modify them, click **Next**.

---

**Step 7** Confirm the information you set and then click **Submit**.

Then check the status of the **Internet** indicator. When the **Internet** indicator turns green, you can access the Internet.

The preceding operations need only be performed on a computer once. The next time when you power on the computer, you can access the Internet without any other configurations.

## 3 Setting Up a Wireless Connection

---

If a wireless network adapter is installed on your computer, you can connect your computer to the HG630 over a wireless connection.



---

The method for installing the wireless adapter and its driver varies by vendor. For details, see the installation guide provided by the vendor of your wireless adapter.

---

The HG630's wireless network function is enabled by default. To check the function status, see section 4.2 "Enabling or Disabling the Wireless Network Function".

There are two methods for setting up a wireless connection between the HG630 and your computer.

## 3.1 Setting Up a Wireless Connection With the WPS Button

The HG630 supports the Wi-Fi Protected Setup (WPS) function in Push Button Configuration (PBC) mode. If your computer also supports the WPS function, do the following to connect your computer to the HG630 wirelessly:



---

Windows 7 supports the WPS function. Windows XP supports the WPS function using the wireless network adapter.

---

**Step 1** Press and hold the **WPS** button on the HG630's side panel for more than 1 second.

The **WPS** indicator on the HG630 starts blinking, indicating that the WPS negotiation is in progress.

**Step 2** Enable the WPS negotiation function on the computer within 2 minutes.

Wait for a while, the **WPS** indicator on the HG630 stops blinking and turns steady on, indicating that a wireless connection is set up between the HG630 and computer.



- 
- You need to wait for 10~120 seconds.
  - The **WPS** indicator is on for about 300 seconds and then turns off.
- 

## 3.2 Setting Up a Wireless Connection Manually

If your network adapter does not support the WPS function, you can also set up a wireless connection manually. The following example uses a computer running the Window XP operating system to describe how to set up a wireless connection using the default wireless network name and password:

- Step 1** Enable the wireless configuration service provided by Windows XP.
1. Right-click **My Computer** to display a short-cut menu, and choose **Manage**.
  2. In the **Computer Management** window, choose **Computer Management (Local) > Services and Applications > Services**.
  3. Right-click **Wireless Zero Configuration** to display a shortcut menu, and choose **Properties**.
  4. Check that **Service status** is **Started**. If **Service status** is not **Started**, click **Start**.
  5. Click **OK** to close the dialog box, and then close the **Computer Management** window.

- Step 2** Record the wireless network name (**SSID**) and its password (**WLAN Key**) printed on the label on the HG630's rear panel.



---

If the default wireless network name and password have been changed, use the new ones.

---

- Step 3** Configure the wireless network connection on the computer as follows:
1. Choose **start > All Programs > Accessories > Communications > Network Connections**.
  2. In the **Network Connections** window, right-click **Wireless Network Connection** to display a shortcut menu, and then choose **Properties**.
  3. In the **Wireless Network Connection Properties** dialog box, click the **Wireless Networks** tab.
  4. Select **Use Windows to configure my wireless network settings**.
  5. Click **View Wireless Networks**.
  6. In the **Wireless Network Connection** dialog box, select the wireless network whose name is the same as the one you recorded in Step 2, and then click **Connect**.
  7. In the dialog box, enter the password you recorded in Step 2, and then click **Connect**.

After the system verifies the wireless network name and password, **Connected** appears on the wireless network icon in the wireless network list, indicating that your computer has established a wireless connection to the HG630.

8. Close **Wireless Network Connection** dialog box.



---

You need to set up a wireless connection only once. Then you can access the wireless network anytime you want as long as that the wireless network name and password are not changed. When the HG630 is working properly, your computer connects to the HG630 automatically after its wireless function is enabled.

---

## 4 Maintenance Guide

---

### 4.1 Changing the User Name and Password for the Web-based Configuration Utility

For security reasons or to make the password easy to remember, you can change the user name and password for the web-based configuration utility.

To change the user name and password for login:

**Step 1** Log in to the HG630's web-based configuration utility.

**Step 2** Choose **Maintenance > Account** to display the user information management page.

**Step 3** Enter a new user name, your current password, and a new password. Re-enter the new password to confirm it.

**Step 4** Click **Submit**.

After the user name and password are changed, the login page is displayed. Enter your new user name and password to log in.



---

If you forget the password, you can restore the default settings by pressing and holding the **Reset** button on the rear panel of the HG630 for over 6 seconds. The user name and password used for logging in to the web-based configuration utility are then restored to their default values. After the HG630 is restored to its default settings, all user customized data will be lost. Use this function only when necessary.

---

## 4.2 Enabling or Disabling the Wireless Network Function

There are two methods for enabling or disabling the wireless network function.

### Using the WLAN Button

To enable or disable the wireless network function, press the **WLAN** button on the side panel of the HG630 over 1 second. The **WLAN** indicator indicates the status of the wireless network function.

### Using the Web-Based Configuration Utility

To enable or disable the wireless network function from the web-based configuration utility:

**Step 1** Log in to the HG630's web-based configuration utility.

**Step 2** Choose **Basic > WLAN** to display the WLAN tab.

**Step 3** Select **Enable WLAN**.

- Select **Enable WLAN** to enable the wireless network function.
- Clear **Enable WLAN** to disable the wireless network function.

## 4.3 Changing the Wireless Network Name and Password

When your HG630 is delivered, the wireless network name and password are preset. You can find them on the HG630's rear panel label. For security reasons or to make the password easier to remember, change the wireless network name and password as follows:

(Take default wireless network encryption mode **WPA-PSK/WPA2-PSK** as an example)

**Step 1** Log in to the HG630's web-based configuration utility.

**Step 2** Choose **Basic > WLAN** to display the WLAN tab.

**Step 3** Select **Enable WLAN**.

**Step 4** In **SSID**, enter a new wireless network name.

**Step 5** For **Security Mode**, select **WPA-PSK/WPA2-PSK**.

**Step 6** In **WPA Pre-Shared Key**, enter a new password. Use the default settings for other parameters.

**Step 7** Click **Submit**.

Remember the new wireless network name and password you just set. You will be prompted to enter this password when connecting wireless devices, such as a computer, to the HG630's wireless network.



---

If you forget the wireless network name and password, log in to the web-based configuration utility, and set a new name and password. Alternatively, you can restore the HG630 to its default settings. The name and password are then restored to the values printed on the label on the HG630's rear panel.

---

## 4.4 View and Configure the PIN

HG630 can automatically identify the status of the SIM card. After connecting a USB modem to the HG630, you can view the status of the SIM card and the SIM card PIN operation.

To view and configure the PIN:

**Step 1** Insert a SIM card into the USB modem and connect the USB modem to the HG630.

Wait about 20 seconds. The HG630 needs time to obtain the SIM card information.

**Step 2** Log in to the HG630's web-based configuration utility.

**Step 3** Choose **Advanced > PIN**.

**Step 4** View the status of the SIM card.

- **Please insert a datacard:** indicates that the datacard is not well inserted, or you have not inserted a datacard.
- **Please insert a SIM card:** indicates that the SIM card is not well inserted, or you have not inserted a SIM card.
- **The PIN does not need to be verified:** indicates that the PIN of the SIM card is disabled, and you will do not need to verify the PIN.

- **The PIN needs to be verified:** indicates that you need to enter the PIN in PIN text box and submit to verify the PIN.
- **The PIN has been verified:** indicates that the current PIN has been verified, and you can change, disable or delete the current PIN.

Take the PIN of the SIM card can be modified as an example to introduce the PIN operation. If your PIN does not need to be verified, Skip “Step 5”.

**Step 5** In **PIN operation**, select PIN-related operations.

- **Verify:** after you enter the PIN and click **Submit**, the PIN can be verified.  
**Enable:** select **Enable** and click **Submit**, then you will need to verify the PIN. After the PIN has been verified, you can change, disable or delete the current PIN.
- **Change:** enter a new PIN and click **Submit**, then you can change the current PIN.
- **Disable:** select **Disable** and click **Submit**, then you will do not need to verify the PIN.
- **Delete:** select **Delete** and click **Submit**, then you can delete the PIN.



- 
- If you don't know the default PIN, consult your SIM card provider.
  - When configuring the PIN, you must verify the PIN before other operation.
  - For security reasons or to make the PIN easy to remember, please change the PIN.
- 

## 4.5 Configuring the Firewall

The firewall can protect the terminal against malicious access on the LAN port and is used when the HG630 works in routing mode. For security reasons, you can configure the firewall as follows:



- Step 1** Log in to the HG630's web-based configuration utility.
- Step 2** Choose **Advanced** > **Firewall** to display the **Firewall** page.
- Step 3** Select a firewall level for **Firewall level**.
- Step 4** Click **Submit**.

## 4.6 Changing the IP Address Used to Log In to the Web-based Configuration Utility

For security reasons or to make the password easy to remember or to avoid IP address conflicts when using multi-homagate, you can change the login IP address as follows:

- Step 1** Log in to the HG630's web-based configuration utility.
- Step 2** Choose **Basic** > **LAN** to display the **DHCPv4 Server** tab.
- Step 3** In the **LAN Host Settings** section, enter a new IP address in **IP address**. Then enter a new subnet mask in **Subnet mask**.
- Step 4** Click **Submit** to save the changes.



---

To log in to the web-based configuration utility after you change the IP address successfully, you need to launch the Internet Explorer, and then enter the new IP address in the address bar. Ensure that the IP address of the computer is in the same network subnet as that of the HG630 so that the computer can access the web-based configuration utility.

---

## 4.7 Restoring Default Settings



If you restore the HG630 to its default settings, all customized user data will be lost. Use this function only when necessary.

To restore the HG630 to its default settings, power on the HG630, press and hold the **Reset** button on the rear panel for over 6 seconds, and then release the button.

You can also do the following to restore the HG630 to its default settings from the web-based configuration utility:

**Step 1** Log in to the HG630's web-based configuration utility.

**Step 2** Choose **Maintenance > Device** to display the **Reset** tab.

**Step 3** Click **Restore Default Settings**.

**Step 4** In the displayed dialog box, click **OK**.

The login page will be displayed within 2 minutes. Enter the default user name (**user**) and password (**HuaweiUser**) to log in.

## 5 Applications Guide

---

### 5.1 Accessing a Portable Storage Device Using the FTP Client

The HG630 supports a home storage and printing function. After a portable storage device is connected to the USB port, you can configure the HG630 through the FTP server to access the portable storage device from the LAN or Internet.

To access a portable storage device:

**Step 1** Connect the mobile storage device to the HG630's USB port.

**Step 2** Enable the FTP server, and configure the FTP server settings.

1. Log in to the HG630's web-based configuration utility.
2. Choose **Advanced > USB Port** to display the **FTP Server** tab.
3. Select **Enable FTP Server**.
4. In **User name** and **Password**, enter a user name (default is **ftp**) and password (default is **ftp**) for the FTP server.



---

For security reasons or to make the password easy to remember, you can change the user name and password for the FTP server.

---

5. Enter a server port number (default is **21**) in the **Port** text box.
6. Click **Submit** to save the settings.

**Step 3** Start the FTP client, and access the HG630's LAN IP address through the FTP server.

1. On your computer, launch a browser.
2. Enter **FTP:// 192.168.1.1** in the address bar, and press **Enter**.
3. In the login dialog box, enter the user name and password for FTP server login (values that you set in Step 2), and click **Login**.

After the user name and the password are verified, you can read data from or write data to the mobile storage device connected to the HG630.

## 5.2 Allowing Internet Users to Access an Internal Resource Server

Without special settings, Internet users cannot access the web or FTP servers on a LAN. By using the network address translation (NAT) function of the HG630, specified Internet users are allowed to access the web and FTP servers on a LAN.

Furthermore, IP addresses used by most users to access the Internet are dynamically assigned by service providers, so many cannot use fixed IP addresses to access the resources provided on servers. The HG630's Dynamic Domain Name Service (DDNS) function allows Internet users to use fixed domain names to access the resources provided on servers.

After the DDNS function is enabled, the HG630 automatically submits the new IP address obtained to the server of a DDNS provider. On the DDNS server, the IP address that corresponds to the domain name is updated to the latest IP address. When a computer on the Internet accesses the domain name, the DDNS server provides the latest IP address to that computer.

If you deploy a web server on a LAN and want Internet users to be able to access the web site on the web server through a fixed domain name, take the follow IP addresses of relevant devices as an example:

- The IP address of the HG630 LAN port is **192.168.1.1**.
- The IP address of the web server is **192.168.1.24**.

You can use the port mapping function of the NAT and DDNS function to implement the preceding requirements.

Before the configuration, you need to complete the following actions:

- Apply for the DDNS from a DDNS provider to obtain relevant parameters.
- Apply for a domain name for the web site from the institution that manages web site domain names.

After the preceding actions, set the parameters of the HG630 as follows:

- Configure a port mapping rule, and then map the IP address of the web server (**192.168.1.24:80**) to the **80** port of the LAN port.
- Configure the DDNS. Ensure that the HG630 can submit IP addresses to the DDNS server automatically.

The configuration procedure is as follows:

**Step 1** Log in to the web-based configuration utility.

**Step 2** Choose **Advanced > NAT**.

**Step 3** Click **Port Mapping** tab.

**Step 4** Click **New**.

**Step 5** Select **Application**, and then select **Web server (HTTP)** for **Application**.



---

The port mapping function of the HG630 provides parameter setting templates of multiple applications. After a template is selected, the HG630 sets relevant parameters automatically. You can change the parameter settings as required. You can also set all the parameters manually based on the requirements of other applications.

---

**Step 6** Set the following parameters as planned.

- External start port: 80
- External end port: 80
- Internal host: 192.168.1.24
- Internal port: 80

**Step 7** Click **Submit**.

**Step 8** Choose **Advanced > DDNS** to display the **DDNS** tab.

**Step 9** Click **New**.

**Step 10** In **Service provider**, select your service provider.



- 
- If your service provider does not in the drop-down box, select **Others**.
  - The DDNS function of the HG630 provides parameter setting templates of multiple DDNS providers. After a template is selected, the HG630 sets relevant parameters automatically. You can change the parameter settings as required. You can also set all the parameters again as required.
- 

**Step 11** Set the parameters provided by the DDNS provider.

**Step 12** Click **Submit**.

## 6 FAQs

---

Can I use the HG630 as a DHCP server?

Yes. The HG630 incorporates the DHCP server software.

How can I quickly restore the default settings of the HG630?

When the HG630 is powered on, press and hold the **Reset** button for 6 or more seconds, and then release it. The HG630 then automatically restarts and the default settings are restored.

What can I do if I cannot access the HG630 configuration page?

**Step 1** Check the IP address of your computer and ensure that this IP address is in the same network segment as the HG630 LAN IP address.

**Step 2** Ensure that your Web browser does not use a proxy server.

**Step 3** Ensure that you have entered the valid user name and password used to access the HG630 configuration page.

If the problem persists, restore the default settings of the HG630.

Does the WPS function have any special requirement on the wireless encryption settings of the HG630?

The WPS function can be used only when the WLAN security mode is set to **WPA2-PSK** or **WPA-PSK/WPA2-PSK**. It is recommended that you set the security mode to **WPA-PSK/WPA2-PSK**.

If my computer fails to connect to a WLAN after I press and hold the WPS button, what should I do?

- Step 1** Ensure that only one computer is connecting to the HG630 through the WPS function at one time.
- Step 2** On the HG630, ensure that the wireless network function and the WPS function implemented through the PBC method are enabled.
- Step 3** Ensure that the security mode of the WLAN is set to **WPA2-PSK** or **WPA-PSK/WPA2-PSK**. Note that the WPS function of the HG630 is forcibly disabled if the WEP encryption is used for the WLAN.
- Step 4** Check the positions of the HG630 and computer. Ensure that they are far from electric appliances that generate strong magnetic or electric fields, such as microwave ovens, refrigerators, and cordless telephones.
- Step 5** Place the HG630 and the computer in an open space. Although radio signals can pass through obstacles, passing through too many obstacles, such as walls and columns may negatively impact the transmission of WLAN radio signals.

What can I do if I cannot access the Internet through a wireless network adapter?

**Step 1** Ensure that the power cables and telephone lines of the HG630 are connected properly.

**Step 2** Check whether the **WLAN** indicator of the HG630 is on.

If the **WLAN** indicator is off, the WLAN function of the HG630 is disabled. If this is the case, enable the WLAN function.

For details about how to enable the WLAN function, see section 4.2 "4.2 Enabling or Disabling the Wireless Network Function".

**Step 3** Look at the description of the wireless network adapter that is installed on the computer and check whether the wireless network adapter supports the 802.11b, 802.11g, or 802.11n protocols.

If the wireless network adapter does not support the preceding protocols, replace it.

**Step 4** Check whether the driver for the wireless network adapter is installed on the computer properly.

If the driver is installed improperly, re-install it.

**Step 5** Check whether the computer can receive signals from the WLAN.

Using a computer that runs Windows XP as an example, check whether the computer can receive signals from a WLAN by doing the following:

1. In the **Control Panel** window, double-click **Network Connections** to display the **Network Connections** window.
2. In the **Network Connections** window, right-click **Wireless Network Connection** and choose **View Available Wireless Networks**.

If the computer cannot detect a WLAN, place the computer close to the HG630 and ensure that no obstacles (such as cement or wooden walls) are present between the computer and the HG630.

**Step 6** Check whether the computer accesses the WLAN of the HG630 successfully.

Check the list of wireless network connections and ensure that the HG630 is connected to the WLAN.

**Step 7** Try to access different web sites to check whether the HG630 can access other web sites.

If the HG630 cannot access other web sites, restore to the default settings of the HG630. If the problem persists, contact your service provider.

#### How do I improve the transmission quality of wireless signals?

**Step 1** Check the positions of the HG630 and computer. Ensure that they are far from electric appliances that generate strong magnetic or electric fields, such as microwave ovens, refrigerators, and cordless telephones.

**Step 2** Place your HG630 in an open space.

Although radio signals can pass through obstacles, passing through too many obstacles, such as cement or wooden walls may negatively impact the transmission of WLAN radio signals.

**Step 3** Place your computer close to your HG630.

If your computer is far from your HG630, the transmission of radio signals may be negatively impacted.

**Step 4** Place your HG630 and computer in a different direction.

**Step 5** Avoid using your HG630 to access a WLAN during thunderstorms.

What can I do if the WLAN of the HG630 is not encrypted and the computer cannot access the WLAN?

**Step 1** Delete the settings of wireless network connections from your computer.

Using a computer that runs Windows XP as an example, delete the settings of wireless network connections by doing the following:

1. In the **Control Panel** window, double-click **Network Connections** to display the **Network Connections** window.
2. In the **Network Connections** window, right-click **Wireless Network Connection** and choose **Properties**.
3. In the **Wireless Network Connection Properties** dialog box, click the **Wireless Networks** tab.
4. In the **Preferred Networks** group box, select the latest wireless network connection saved on your computer, and then click **Remove**.
5. Delete all the other wireless network connections from the **Preferred Networks** group box.
6. Click **OK**.

**Step 2** Create a wireless network connection that is not encrypted.



# 7 Appendix

## 7.1 Indicators

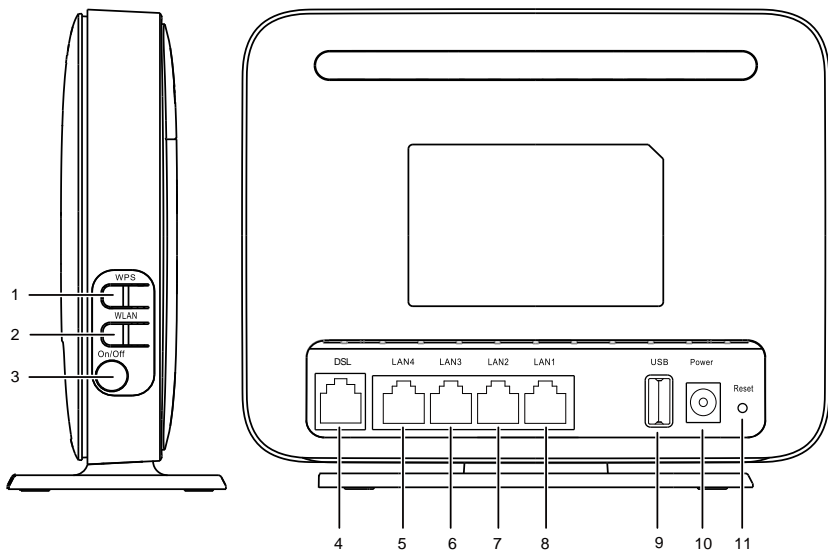


| Indicator | Status    | Description  |
|-----------|-----------|--|
| Power     | On        | The HG630 is powered on.   |
|           | Off       | The HG630 is powered off or faulty.  |
| DSL       | Blinking  | The HG630 is being activated through DSL.  |
|           | Steady on | The HG630 is activated through DSL.  |
|           | Off       | <ul style="list-style-type: none"><li>• The HG630 is powered off.</li><li>• The DSL port is not connected.</li></ul> |

| Indicator   | Status   | Description   |
|-------------|----------|---|
| Internet    | On       | <ul style="list-style-type: none"> <li>● The HG630 is working in routing mode.</li> <li>● No data is being transmitted.</li> </ul>  |
|             | Blinking | <ul style="list-style-type: none"> <li>● The HG630 is working in routing mode.</li> <li>● Data is being transmitted.</li> </ul>   |
|             | Off      | <ul style="list-style-type: none"> <li>● The HG630 is working in bridge mode.</li> <li>● The HG630 is powered off.</li> </ul>   |
| WLAN        | On       | The WLAN connection is set up, but no data is being transmitted.  |
|             | Blinking | The WLAN connection is set up, and data is being transmitted.   |
|             | Off      | The WLAN function is disabled.  |
| WPS         | Blinking | <ul style="list-style-type: none"> <li>● A wireless client, such as a computer installed with a wireless network adapter, is connecting to the HG630 using the WPS function.</li> <li>● This process lasts for no longer than 120 seconds.</li> </ul> |
|             | Off      | The WPS function is disabled or faulty.   |
| LAN1 ~ LAN4 | On       | The HG630 is connected to a device properly.  |
|             | Blinking | Data is being transmitted between the HG630 and the device connected.   |
|             | Off      | No connection is set up on the port.  |

| Indicator | Status    | Description  |
|-----------|-----------|--|
| USB       | Blinking  | <ul style="list-style-type: none"> <li>• The HG630 is being activated through USB modem.</li> <li>• Data is being transmitted on the USB port.</li> </ul>        |
|           | Steady on | <ul style="list-style-type: none"> <li>• The HG630 is activated through USB modem.</li> <li>• A portable storage device is connected to the USB port.</li> </ul> |
|           | Off       | <ul style="list-style-type: none"> <li>• The USB port is not connected.</li> <li>• The HG630 is powered off.</li> </ul>  |

## 7.2 Ports and Buttons



| Number | Port or Button | Description   |
|--------|----------------|---|
| 1      | WPS            | Used to enable the WPS function.  |
| 2      | WLAN           | Used to enable or disable wireless network function quickly.  |
| 3      | On/Off         | Used to power on or off the HG630.  |
| 4      | DSL            | Used to connect to the MODEM port on the splitter or connect to the telephone wall jack.  |
| 5 ~ 8  | LAN4~<br>LAN1  | Used to connect Ethernet devices, such as computers and switches, to the HG630.   |
| 9      | USB            | <p>USB port used to connect to a USB device, such as a USB storage device or printer.</p> <p><b>NOTE</b></p> <p>The maximum voltage/current output from the USB port is 5 V/1 A. That is, the input voltage/current of the USB device connected to the USB port cannot exceed 5 V/1 A. Otherwise, the HG630 may not work correctly.</p> |
| 10     | Power          | Used to connect to the power adapter.   |
| 11     | Reset          | <p>To restore the HG630 to its factory settings, power it on, press and hold the <b>Reset</b> button for at least 6 seconds, and then release it.</p> <p><b>NOTE</b></p> <p>After you restore the HG630 to its factory settings, your user settings will be lost. Therefore, use this function with caution.</p>                        |

## 7.3 Default Settings

| Parameter   | Setting                                   |
|---|---|
| IP address of the LAN port                                      | 192.168.1.1                               |
| Subnet mask of the LAN port                                     | 255.255.255.0                             |
| User name used to log in to the web-based configuration utility | user                                      |
| Password used to log in to the web-based configuration utility  | HuaweiUser                                |
| SSID used to access wireless network                            | Check the label on the HG630's rear panel |
| WLAN key used to access wireless network                        | Check the label on the HG630's rear panel |
| DHCP server function  | Enable                                    |
| WLAN function   | Enable                                    |

## 7.4 Technical Specifications

| Item                              | Specification                                       |
|-----------------------------------|---|
| Ambient temperature for operation | 0°C to 40°C (32°F to 104°F)                         |
| Dimensions (H × W × L)            | About 137 mm × 60 mm × 162 mm<br>(include the base) |
| Weight                            | < 300 g<br>(Not including the power adapter)        |

| Item                            | Specification                             |                  |
|---------------------------------|---|------------------|
| Relative humidity for operation | 5% to 95%, non-condensing                 |                  |
| WLAN standards                  | 802.11b, 802.11g and 802.11n (2.4 GHz)    |                  |
| Wireless transmission rates     | 802.11b                                   | Up to 11 Mbit/s  |
|                                 | 802.11g                                   | Up to 54 Mbit/s  |
|                                 | 802.11n (with 2T2R external antenna used) | Up to 300 Mbit/s |

**HUAWEI TECHNOLOGIES CO., LTD.**

Huawei Industrial Base

Bantian, Longgang

Shenzhen 518129

People's Republic of China

[www.huawei.com](http://www.huawei.com)