



KONICA MINOLTA

bizhub PRO C6500

DO BUSINESS BETTER

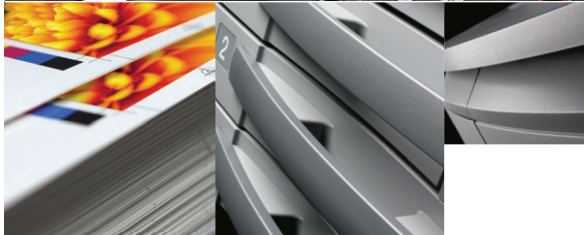
FULL COLOR
PRODUCTION
PRINTER
COPIER
SCANNER



CONNECT

COMMUNICATE

CONTROL



A TOTAL SOLUTION FOR COLOR PRINT PRODUCTION.

Speed. Power. Control. To make color print production more profitable and professional, you need all three – and bizhub PRO C6500 delivers, with superior quality, smaller footprint and lower cost of ownership. Spectacular color quality gives every document greater impact. 65 ppm output in color and B&W provides power to spare. Robust design delivers a high-volume, 300,000-page monthly duty cycle. Powerful Fiere® and Creo® image controller options let you manage sophisticated color management, workflow integration and imposition functions with point-and-click simplicity. And flexible inline finishing capabilities include 200-page trimmed booklet-making – giving you the total color solution you've been looking for, at a cost you can afford.



The essentials of imaging

SPEED: PROFESSIONAL COLOR PRINTING AT 65 PPM.

The business world is moving to color – for high-impact product brochures and direct-mail campaigns, persuasive presentations, powerful reports and motivational training and human resource materials.

The reason is simple: color communicates. And with rising demand for high-quality color output, the bizhub PRO C6500 can make short-run, in-house color production faster and more profitable for corporate CRDs and data centers as well as quick print and commercial print applications.

The affordable bizhub PRO C6500 provides up to 65 ppm output speed – a maximum of 3900 8.5" x 11" impressions per hour in both color and B&W, so the need for color never slows down your production workflow. A monthly duty cycle of 300,000 pages gives the bizhub PRO C6500 workhorse power in high-volume environments.

Exclusive Konica Minolta Simitri® HD Color Polymerized Toner enhances fine detail and insures accurate, consistent color in every document you print. Add powerful Fiery® and Creo® print control capabilities to your system, and you'll have advanced color management tools that really power up your print production – an unbeatable strategy for maximizing throughput, satisfying clients and increasing profits.



CONNECT_INPUT_OUTPUT_CLIENTS_PROJECTS_PRODUCTIVITY



In-house color printing. The bizhub PRO C6500 creates spectacular full-color booklets, reports, presentations and internal documents – the high-quality color communications that corporate and commercial clients demand.

Fine detail, legible text. Next-generation Simitri® HD Color Polymerized Toner technology reduces particle size for ultra-fine image detail, sharpens text and improves halftone reproduction in both color and B&W.

Heavy and coated stock. The bizhub PRO C6500 handles heavy and coated paper stock – up to 300 gsm, with full duplex capability on 256 gsm.

Full-bleed 12" x 18" printing. Sheet sizes from 4" x 6" up to 13" x 19.2" let you reproduce full-bleed 12" x 18" color originals and preserve crop marks and borders – a real plus for printing professionals.

200-page trimmed booklets. The bizhub PRO C6500 is the highest-capacity color booklet-maker in the industry, creating 200-page saddle-stitched and face-trimmed color booklets with image shift for perfect page alignment.

Simitri HD
High Definition Polymerized Toner



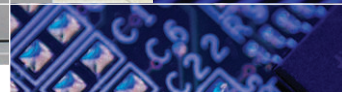
POWER: PRINT AND FINISH WITH ACCURACY AND EASE.

The bizhub PRO C6500 is purpose-built to meet the most demanding applications – designed by professionals, for professionals. It carries you far beyond the capabilities of ordinary color printers into the professional world of workhorse production print systems that meet rigorous, uncompromising standards – increasing your output, improving your document quality and managing your workflow more efficiently.

The bizhub PRO C6500 is designed to get the job done right – and to work the way you do. It's a scalable solution with the advanced production tools, finishing capabilities and print control options you need to migrate from offset equipment. And it maintains superb color print quality while achieving “big iron” performance at lower cost in a smaller footprint.



COMMUNICATE_DISTRIBUTION_CONCEPTS_CHANGES_SCHEDULES_VALUES.



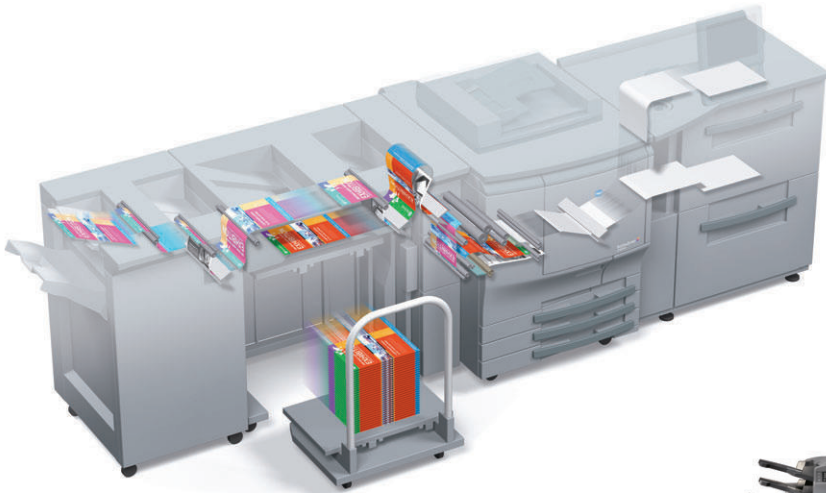
Precise registration accuracy. Front and reverse sides are precisely matched to insure accurate alignment within 1mm for booklets or other duplex multi-page documents, with independent adjustments for transversal direction timing and image shift.

Air-assist paper feed. Air blowers in paper trays separate sheets to improve high-speed paper handling, so even coated substrates move smoothly through your high-speed production cycle.

Internal heating/dehumidifying unit. For smooth, fast throughput, an internal heating/dehumidifying unit environmentally conditions paper stock for professional image quality with less curling and fewer misfeeds.

Change toner on the fly. For longer uninterrupted print runs, the bizhub PRO C6500 lets you change toner on the fly with a clean, simple exchange of toner bottles – to keep your output flowing.

Maximum 7,500-sheet input. With the optional PF-601 Paper Feed Unit, your bizhub PRO C6500 loads up to 7,500 sheets – so you can reduce labor costs by producing long print runs with unattended operation. The PF-601 even features ultrasonic double-feed detection for flawless feeding reliability.



Six folding capabilities. With the optional FD-501 Multi-Folding Unit, you'll have a wide array of folding capabilities – including half fold, letter fold-in, letter fold-out, z-fold, double parallel fold and gate fold.

Auto stapling option. The FS-503 Staple Finisher provides sorting, grouping and 100-sheet multi-position stapling with staple cutting function for varying staple length.

Saddle-stitch booklets. The optional SD-501 Saddle-stitch Finisher enables you to produce folded, stitched and trimmed booklets up to 200 pages (50 sheets).

5,000-sheet stacker option. The optional LS-501 Large Capacity Stacker holds up to 5,000 sheets and includes a roll-away cart that lets you move print output more easily for nearline finishing or packing and distribution.



FD-501



FS-503



SD-501



LS-501

CONTROL: SUPERIOR COLOR MANAGEMENT CAPABILITIES.

The bizhub PRO C6500 excels in power, simplicity and control – and for cost-effective color print production, that's an ideal combination.

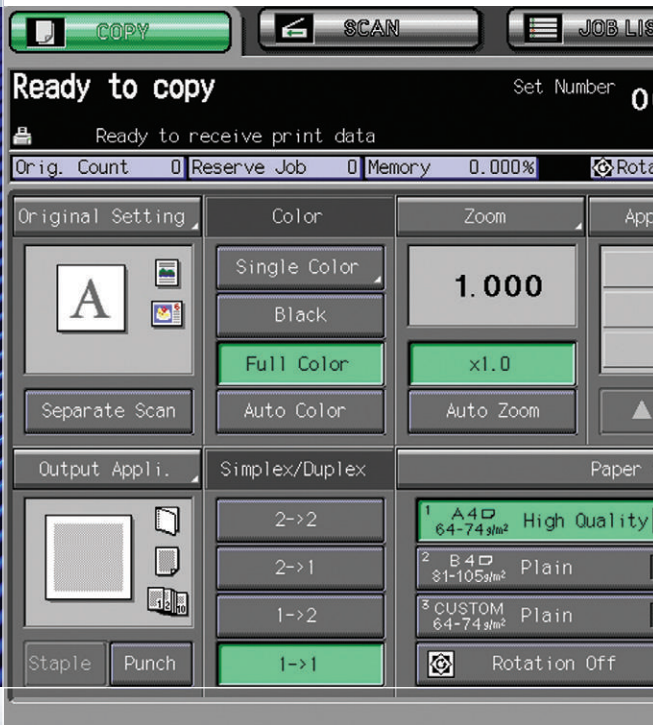
It begins with an onboard touch-screen for fingertip setup and input/output functions, all easily accessible through clear, intuitive menus to help operators move more jobs more quickly and allow all personnel to be productive right from the start.

For sophisticated color management, you'll have a choice of external or internal Fieri® Image Controller and Creo® Print Controller options – starting with an embedded Fieri® IC-408 Image Controller that drives entry-level configurations at full rated speed, with simple interface for print/scan productivity.

The advanced Fieri® IC-305 Image Controller enhances your workflow with remote color print management via standard web browsers – and the optional EFI Graphic Arts Package supports accurate color proofing and paper-stock simulations as well as varied document formats, comprehensive halftone screening capability, editing tables, custom colors and multiple-plate PostScript separations for greater color precision and repeatability.

The Creo® IC-304 Image Controller delivers truly spectacular color printing results, with superior default color settings and advanced management capabilities like color calibration, last-minute color corrections, spot-color editing, and gradation corrections without re-RIPing the entire file. Advanced Job Editor functions lets you easily carry out merging, imposition fine-tuning and page delete-replace – and simple automation tools let you retain print defaults for jobs, handle paper with greater flexibility and perform in-line finishing.

You can also expand your bizhub PRO system with comprehensive software enhancements to handle specialized needs – server-based workflow efficiency, host-computer printing, print queue management, job submission to track and control printing and cost-accounting. They're all pre-matched to your bizhub PRO C6500 for smooth system integration.



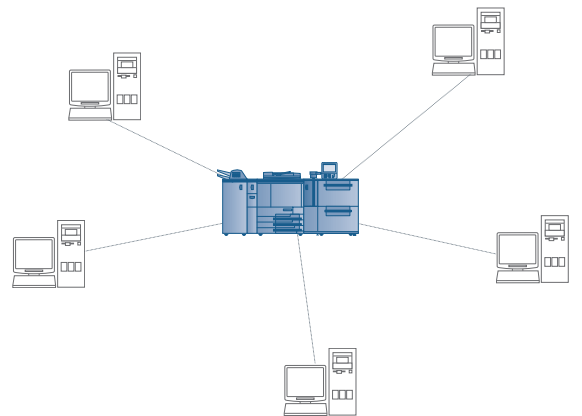
CONTROL_SPEED_QUALITY_RELIABILITY_FLEXIBILITY_SECURITY

Increased power and flexibility. The easy-to-learn Creo® IC-304 Print Controller lets you incorporate digital printing into your existing JDF-based workflow configuration, providing a transparent bridge between offset and digital production. You'll be able to process and digitally print preprepared files created for offset – and seamlessly connect to Kodak Brisque and Kodak Prinergy Workflow Management Systems as well as many other industry-leading third-party workflow vendors.

Effortless variable data printing. The IC-304 operates in both Windows and Mac environments – and allows you to leverage comprehensive variable data printing (VDP) solutions, with support for Creo Variable Print Specification (BPS), PPML, PDF and Adobe PostScript files to quickly create full-color personalized documents from postcards to brochures.

Improved performance through Fiery® SmartRIP technology. The Fiery® IC-305 System 8/R2 Image Controller features a new, faster, more powerful hardware platform providing RIP-while-print capability and intuitive icon-driven print drivers customizable to meet the needs of any user. Enhanced color management features include composite overprint for CMYK and spot colors, improved text and graphics quality and ICC v4 support. Fiery® system 8/R2 even features enhanced security and document assembly capabilities including a user-friendly booklet wizard for the PB-501 Perfect Binder and SD-501 Saddle Stitch Unit.

EFI Graphic Arts Tools. The IC-305 provides standard comprehensive color tools, including Hot Folder, Auto Trapping and Spot Color capabilities as well as imposition, job ticketing and accurate on-screen “soft proof” print preview. And EFI Command Workstation provides a simple remote interface for managing print queues, controlling job functions, previewing thumbnails and full-screen color images, maintaining and update archives, creating job logs and more.





bizhub PRO C6500

GENERAL SPECIFICATIONS

TYPE:
CONSOLE TYPE

PRINT/COPY PROCESS:
LASER ELECTROSTATIC TRANSFER METHOD

DEVELOPMENT SYSTEM:
DRY-TYPE DUAL COMPONENT MAGNETIC
BRUSH DEVELOPING

PRINT/COPY SPEED (COLOR AND B&W):
65 PPM (8.5" X 11")

MAXIMUM MONTHLY DUTY CYCLE:
300,000 PAGES

PRINT/COPY RESOLUTION:
600 X 600 DPI

GRADATION: 256 (8 BITS) CMYK

MEMORY: 1 GB

WARM-UP TIME: APPROX. 6.5 MINUTES

FIRST COPY:
APPROX. 6.5 SECONDS (COLOR)
APPROX. 5.0 SECONDS (B&W)

COPY QUANTITY:
1 - 9,999 COPIES (COUNTDOWN,
INTERRUPT CAPABILITY)

MAGNIFICATION:
ZOOM RANGE: 25 - 400%,
0.001% INCREMENTS

COLOR MODES:
AUTO
FULL COLOR
BLACK & WHITE
SINGLE COLOR

EXPOSURE MODES:
TEXT (LEGIBLE TEXT)
TEXT/PHOTO (CLEAR TEXT & HALFTONES)
PHOTO IMAGE (OPTIMIZED FOR GRADATIONS)
MAP (FINE EDGES, LEGIBLE TEXT)

ORIGINAL SIZE:
UP TO 11" X 17" MAXIMUM

PAPER SIZE:
UP TO 13" X 19.2" MAXIMUM (ALL TRAYS)

PAPER WEIGHT:
UP TO 140 LB. INDEX/256 GSM
UP TO 170 LB. INDEX/300 GSM (PF-601 TRAY 5)

STANDARD PAPER SUPPLY:
500-SHEET UNIVERSAL PAPER DRAWERS (3)

OPTIONAL PAPER SUPPLY:
6,000-SHEET PAPER FEED UNIT (PF-601)
2,500-SHEET LARGE CAPACITY TRAY (LU-202)

MAXIMUM PAPER CAPACITY:
7,500 SHEETS (TOTAL, WITH OPTIONS)

DOCUMENT FEEDER:
DF-609 REVERSING DUPLICATING
DOCUMENT FEEDER (OPTIONAL)
CAPACITY: 100 SHEETS
ORIGINAL SIZE: UP TO 11" X 17"
1-SIDED, 2-SIDED ORIGINALS
MIXED ORIGINAL DETECTION

POWER REQUIREMENTS:
208V - 240V, 60HZ, 16A
(DEDICATED LINE)

DIMENSIONS (W X D X H):
31" X 39.1" X 41.63" (MACHINE ONLY)

WEIGHT: 794 LBS.

BIZHUB PRO C6500 OPTIONS

FD-501 MULTI-FOLDING UNIT
FS-503 STAPLE FINISHER
FS-520 STAPLER FINISHER
FS-607 BOOKLET FINISHER
HD-506 HARD DISK DRIVE
HT-503 HEATER/DEHUMIDIFIER
HT-504 HEATER/DEHUMIDIFIER
IC-305 EXTERNAL FIERY® IMAGE CONTROLLER
IC-304 EXTERNAL CREO® IMAGE CONTROLLER
IC-408 INTERNAL FIERY® IMAGE CONTROLLER
LS-501 LARGE CAPACITY STACKER
LU-202 LARGE CAPACITY TRAY
OC-506 PLATEN COVER
PB-501 PERFECT BINDER
PF-601 PAPER FEEDER UNIT
PI-502 POST INSERTER
PK-512 PUNCH KIT
RU-503/RU-504 RELAY UNIT
SD-501 SADDLE-STITCH FINISHER

AVAILABLE FUNCTIONS

AUTO ZOOM
AUTO PAPER SELECT
AUTO LOW POWER
AUTO RESET
AUTO SHUT-OFF
BOOK COPY
BOOKLET PAGINATION
CHAPTERS
COLOR MODE
COLLATE (FS-503, LS-501)
COMBINE ORIGINALS
COPY DENSITY
COVER SHEET FEEDING (FS-503 W/ FD-501)
CUSTOM SIZE IN ORIGINAL SETTING
FOLDING (FS-503 W/ FD-501, SD-501)
FRAME CENTER ERASURE
IMAGE CENTERING
IMAGE OVERLAY
IMAGE REPEAT
INSERT IMAGE
INSERT SHEET
INTERRUPT COPYING
JOB LIST
MANUAL SHUT-OFF
MIXED IN ORIGINAL SETTING
MODE MEMORY
MULTI-PAGE ENLARGEMENT
NEG./POS. REVERSE
NON-IMAGE AREA ERASE
NON-SORT (FS-503, LS-501)
PAGE MARGIN
PROGRAM OVERLAY
POWER SAVE
PROGRAM JOB
PROOF COPY
PUNCH (FS-503 W/ FD-501)
RESERVE
ROTATION
SEPARATE SCAN MODE
SIMPLEX/DUPLEX
STAMP
STAPLE (FS-503, SD-501)
TAB PAPER
TRIMMING (SD-501)
UNCOLLATE (FS-503, LS-501)
WEEKLY TIMER
Z-FOLDED IN ORIGINAL SETTING
ZOOM

IC-305 EXTERNAL FIERY® IMAGE CONTROLLER SPECIFICATIONS

PROCESSOR:
INTEL® CORE 2 DUO 2 X 2.13GHZ ROHS

MEMORY: STANDARD: 1 GB, MAXIMUM: 3 GB

HARD DRIVE: 160 GB

SYSTEM SOFTWARE: FIERY® SYSTEM 8 RELEASE 2

PAGE DESCRIPTION LANGUAGE:
ADOBE POSTSCRIPT 3

FONTS: 136 FONTS

VARIABLE DATA: FREEFORM V1/V2.1, PPML
V2.2 COMPLIANCE, POD: CERTIFICATION

IC-305 EXTERNAL FIERY® IMAGE CONTROLLER SPECIFICATIONS CONTINUED

PRINT DRIVERS:
WINDOWS 2000, XP, 2003, VISTA 32-BIT

INTERFACE: 10/100/1000 BASET

NETWORKING:
ETHERNET, APPLE TALK (ETHER TALK), IPX/SPX

PROTOCOL: NDS NETWORK 6.5 COMPLIANCE
(INCLUDES IPRINT), NOVELL YES CERTIFICATION,
SSL/TLS FOR HARMONY, HTTP AND USER
AUTHENTICATION, TCP/IP (STATIC IP, AUTO IP,
DHCP, BOOTP) (WITH IPV4/V6 SUPPORT),
SNMP V3, SMB, PORT 9100 (BI-DIRECTIONAL
SUPPORT), KERBEROS V5, NTLM V2.0, IPP,
LDAP V3, GSSAPI, LPR-RFC, HOST RESOURCE
MIB/PRINTER MIB/MIB-2, EMAIL FORMAT
RFC822, SMTP-RFC821, POP3, IMAP, HTTP,
HTTPS, FTP, EFI SDK V1.0, IP FILTERING, PORT
BLOCKING, BONJOUR SUPPORT (V1.1 AND
LATER), LDAP USER AUTHENTICATION

SCANNING:
SCAN RESOLUTION: 600 DPI
SCAN-TO-HOLD QUEUE (FOR USE WITH
JOB MERGE/EDIT)
SCAN-TO-EMAIL (WITH LDAP)
SCAN-TO-FTP
SCAN-TO-HDD
SCAN-TO-SMB

SECURITY: ISO 15408 EAL-3 FOR SECURE ERASE

UTILITIES:
COMMAND WORKSTATION™ WINDOWS EDITION V4.6
COMMAND WORKSTATION™ MACINTOSH
EDITION V1.5
FIERY® COLORWISE® PROTOCOLS V3.8
FIERY® EMAIL PORT MONITOR V1.0
FIERY® VDP RESOURCE MANAGER V1.2
FIERY® PRINTER DELETE UTILITY V2.0
FIERY® REMOTE SCAN V5.5
EFI HOT FOLDERS V2.4
FIERY® WEBTOOLS™ V3.0
SPOT ON
AUTO TRAPPING

OPTIONS:
FIERY® GRAPHIC ARTS PACKAGE (GA1)
FIERY® GRAPHIC ARTS PACKAGE,
PREMIUM EDITION (GA2)
EFI COLOR PROFILER™
EFI IMPOSE V2.7
EFI COMPOSE V2.0
HDD SECURITY KIT
FACI KIT WITH 19" WIDESCREEN OPTION
EFI SPECTROPHOTOMETER V2.0

IC-408 EMBEDDED FIERY® IMAGE CONTROLLER SPECIFICATIONS

PROCESSOR:
INTEL® CELERON-D®, 2.8GHZ FSB 533MHZ

MEMORY: STANDARD: 512 MB, MAXIMUM: 1 GB

HARD DRIVE: 80 GB

SYSTEM SOFTWARE: FIERY® SYSTEM 8E

PAGE DESCRIPTION LANGUAGES:
ADOBE® POSTSCRIPT 3

FONTS: 136 POSTSCRIPT FONTS

PRINT DRIVERS: WINDOWS 2000, XP, 2003

INTERFACE: 10/100/1000 BASET

NETWORKING:
ETHERNET, APPLE TALK (ETHER TALK), IPX/SPX
(NDS), TCP/IP (STATIC IP, AUTO IP), SNMP V3, SMB,
PORT 9100 (BI-DIRECTIONAL SUPPORT),
KERBEROS V5, NTLM V2.0, IPP, LDAP V3,
GSSAPI, LPR-RFC, HOST RESOURCE MIB/PRINTER
MIB/MIB-2, EMAIL FORMAT RFC822, SMTP-
RFC821, POP3, IMAP, HTTP, HTTPS, FTP,
EFI SDK V1.0, IP FILTERING, PORT BLOCKING,
LDAP USER AUTHENTICATION

IC-408 EMBEDDED FIERY® IMAGE CONTROLLER SPECIFICATIONS CONTINUED

SCANNING:
SCAN RESOLUTION: 600 DPI
SCAN-TO-EMAIL (WITH LDAP)
SCAN-TO-FTP
SCAN-TO-HDD (MAILBOX)
SCAN-TO-HOLD QUEUE

UTILITIES:
COMMAND WORKSTATION™ WINDOWS
EDITION V4.5
COMMAND WORKSTATION™ MACINTOSH
EDITION V1.3-V1.4
FIERY® COLORWISE® PROTOCOLS V3.7-V3.8
FIERY® EMAIL PORT MONITOR
FIERY® VDP RESOURCE MANAGER V1.2
FIERY® PRINTER DELETE UTILITY
FIERY® REMOTE SCAN V5.4-V5.5
FIERY® WEBTOOLS™
SPOT ON

OPTIONAL SOFTWARE APPLICATIONS:

FIERY® GRAPHIC ARTS FEATURES:
AUTO TRAPPING, HOT FOLDERS
WITH VIRTUAL PRINTERS
EFI COLOR PROFILER™ SUITE V2.0
EFI IMPOSE V2.6
EFI SECURE ERASE

IC-304 EXTERNAL CREO IMAGE CONTROLLER SPECIFICATIONS

OPERATING SYSTEM
MICROSOFT WINDOWS XP PROFESSIONAL SP2
ADOBE ACROBAT 7.0 STANDARD (PDF 1.6)

HARDWARE SPECIFICATIONS
INTEL CORE2 DUO PROCESSOR (4M CACHE)
FUSIONIN BOARD
1 GB SYSTEM MEMORY
1 GB IMAGE MEMORY
80 GB SATA SYSTEM AND USER DISK
2 x 80 GB SATA IMAGE DISK SPACE
10/100/1000 ETHERNET NETWORK ADAPTER
DVD R/W
X-RITE DTP34 DENSITOMETER
KEYBOARD AND MOUSE
17" TFT LCD MONITOR
CREO COLOR SERVER STAND

PROTOCOLS SUPPORTED

APPLE TALK
NETBEUI
TCP/IP
IPX/SPX

SERVICES SUPPORTED

APPLESHARE: FILE SHARING
PAP: FILE PRINTING
NETBIOS: PRINTING AND FILE SHARING
OVER TCP/IP/NETBEUI/IPX
TCP/IP: PRINTING LPR/LPD
NOVELL: NDS AND BINDERY
(NOVELL CERTIFIED CLIENT)
NFS (OPTION) FILE SHARING

PAGE DESCRIPTION LANGUAGES (PDLs)

ADOBE POSTSCRIPT 3
NATIVE PDF
EPS
TIFF, TIFF/T
JPEG/CT/LW

VARIABLE DATA FILE FORMATS

CREO VARIABLE PRINT SPECIFICATION (VPS)

DIMENSIONS INCLUDING STAND AND PALLET
FOOTPRINT: 27.6 x 41.4 x 28.4 IN.
WEIGHT 116 LB.

ELECTRICAL

AC INPUT VOLTAGE: 100 TO 127 VAC/127/200-240
VAC @ 50 TO 60 HZ
AMPERE RATING: 100-127 VAC/2 A, 200-240
VAC/1 A



© 2008 KONICA MINOLTA BUSINESS SOLUTIONS U.S.A., INC. All rights reserved. Reproduction in whole or in part without written permission is prohibited. Konica Minolta and The essentials of imaging are trademarks of KONICA MINOLTA HOLDINGS, INC. bizhub, bizhub PRO, PageScope and S.E.A.D. are registered trademarks of KONICA MINOLTA BUSINESS TECHNOLOGIES, INC. Simitri is a registered trademark of KONICA MINOLTA BUSINESS SOLUTIONS. FierY, the FierY logo, Command Workstation and FierY WebTools are trademarks of EFI. Creo is a trademark of Kodak. All other brands and product names are registered trademarks or trademarks of their respective owners.

Design and specifications are subject to change without notice.



KONICA MINOLTA

**KONICA MINOLTA
BUSINESS SOLUTIONS U.S.A., INC.**

100 Williams Drive
Ramsey, NJ 07446

www.kmbs.konicaminolta.us
www.kmbs.konicaminolta.us/solutions