



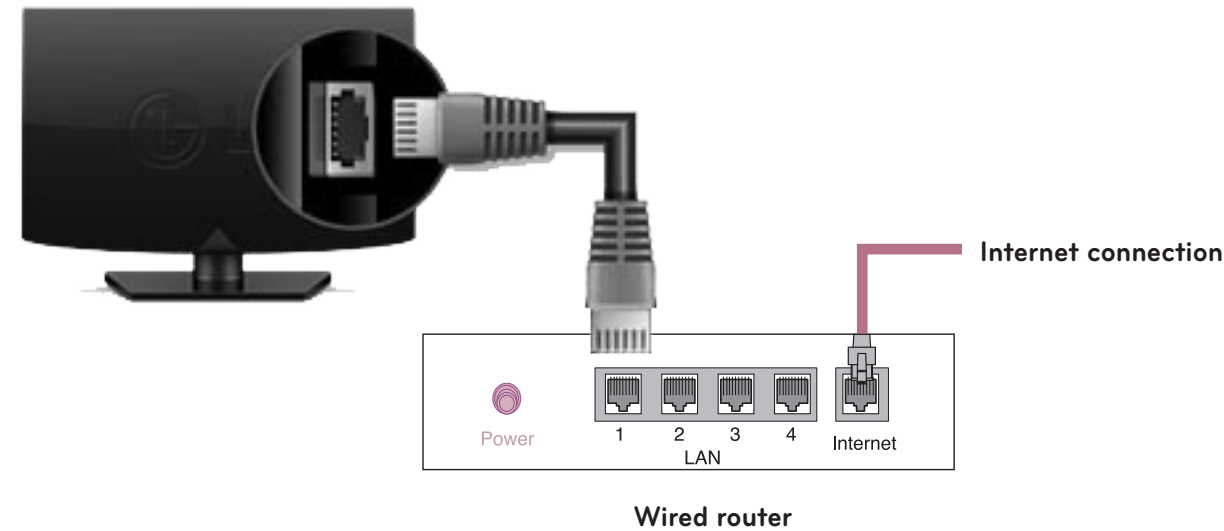
## SMART TV Quick Setup Guide

\* Image shown may differ from your TV.  
\* Image shown on a PC or mobile phone may vary depending on the Operating System (OS).

### Wireless Network Connection



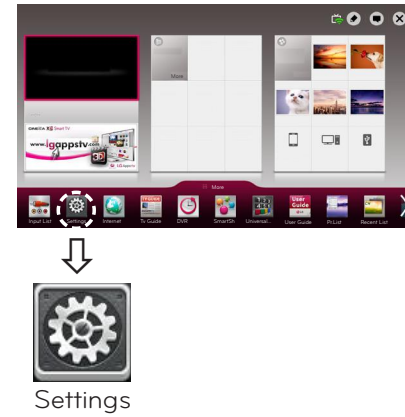
### Wired Network Connection



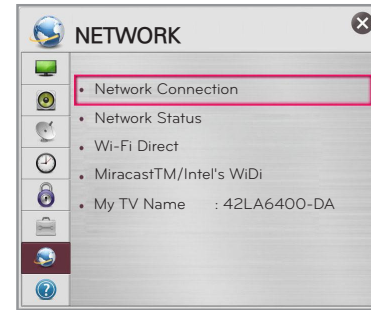
### NETWORK SETTING

Premium Apps are pre-installed on the TV. These may vary by country.

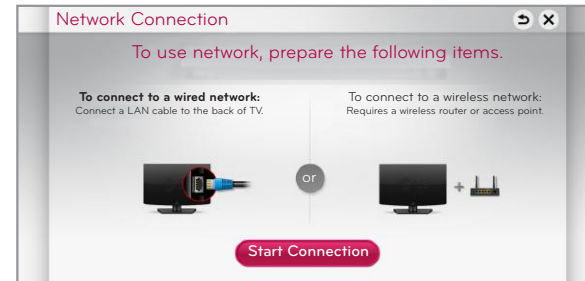
- 1 Press the **SMART** button to access the Smart Home menu. Select **Settings** and press **Wheel(OK)**.



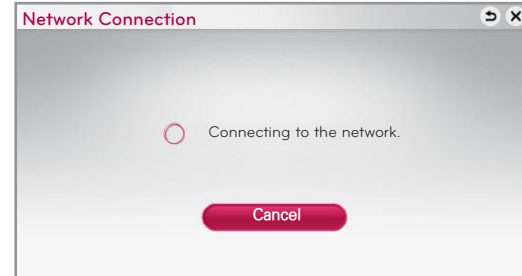
- 2 Select the **NETWORK** → **Network Connection** menu.



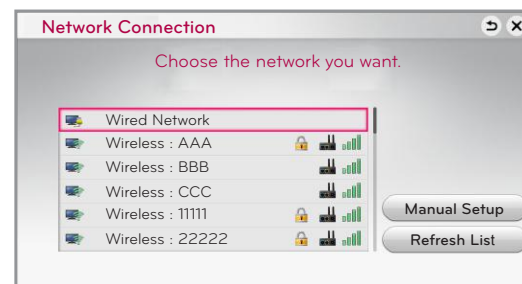
- 3 Select the **Start Connection**.



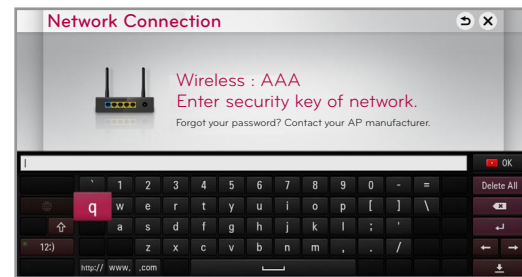
- 4 The device automatically tries to connect to the network available (wired network first).



If you select **Cancel** or it fails to connect to the network, the network list available is displayed. Choose the network you wish to use.

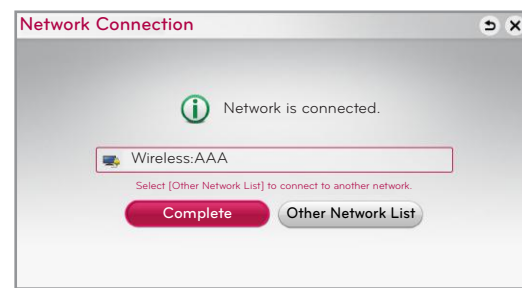


For wireless AP(Router) that have the **lock** symbol, you need to enter the security key.



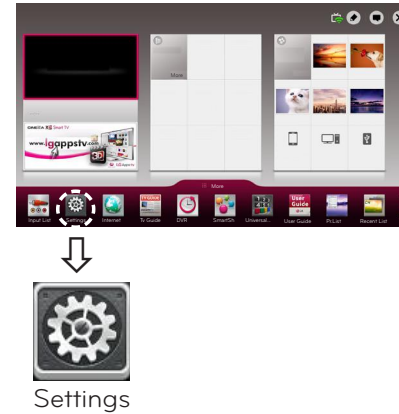
- 5 The connected network is displayed.

Select **Complete** to confirm the network connection. If you select the **Other Network List**, the available network list is displayed again.



### Troubleshooting Network Problems

- 1 Press the **SMART** button to access the Smart Home menu. Select **Settings** and press **Wheel(OK)**.

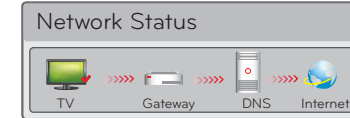


- 2 Select the **NETWORK** → **Network Status** menu.



Follow the instructions below that correlate to your network status.

#### Check the TV or the AP(Router).



**When an ✓ appears on TV, but an X on Gateway.**

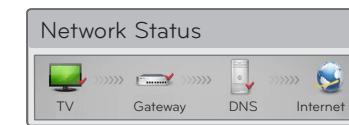
- 1 Check the connection status of the TV, AP(Router) and cable modem.
- 2 Power off and power on the TV, AP(Router) and cable modem.
- 3 If you are using a static IP, enter the IP directly.
- 4 Contact internet companies or AP(Router) companies.
  - Additional points to check when using a wireless connection
    - 1 Check the password for the wireless connection in the AP(Router) settings window.
    - 2 Change the AP(Router) SSID (network name) or the wireless channel.

#### Check the AP(Router) or consult your Internet service provider.



**When an ✓ appears on TV and Gateway, but an X on DNS.**

- 1 Unplug the power cord of the AP(Router), cable modem and try to connect after 5 seconds.
- 2 Initialize(Reset) the AP(Router) or cable modem.
- 3 Contact internet companies or AP(Router) companies.



**When an ✓ appears on TV, Gateway and DNS, but an X on Internet.**

- 1 Unplug the power cord of the AP(Router), cable modem and try to connect after 5 seconds.
- 2 Initialize(Reset) the AP(Router) or cable modem.
- 3 Check that the MAC address of the TV/AP(Router) is registered with your Internet service provider. (The MAC address displayed on the right pane of the network status window should be registered with your Internet service provider.)
- 4 Check the AP(Router) manufacturer's website to make sure your router has the latest firmware version installed.

### SmartShare PC SW Installation & Setting

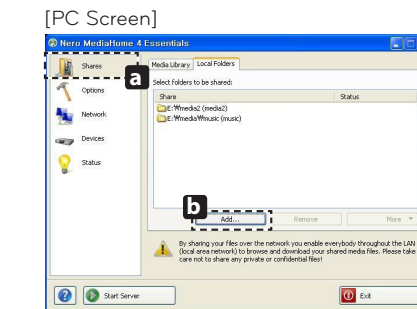
Install the **SmartShare PC SW(DLNA)** and **SmartShare PC SW(MediaLink)** program on your PC.

- 1 Go to **www.lg.com**. Then, select your region.
- 2 Select **SUPPORT**. Then, search for your model.
- 3 Select **Drivers & Software** or **SOFTWARE UPDATE**. Then, select **SmartShare PC SW(DLNA)**
- 4 You can run the program when installation is complete.

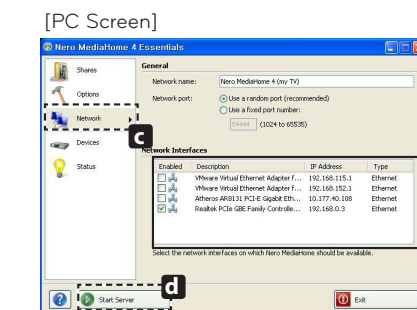
#### NOTE

- DLNA service is only available if TV and other devices are connected via a single AP(Router).

### DLNA Connection to PC



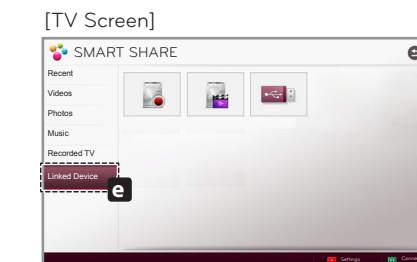
- 1 Start Nero Kwik Media and enable shared folders on your PC.
  - » **a** : Click the Share button.
  - » **b** : Click the Add button and select the desired folder. (Read the Owner's Manual to find out which file formats are supported by the DLNA function.)



- 2 Make sure that the PC network device is selected.

Enabled	Description	IP Address	Type
<input type="checkbox"/>	VMware Virtual Ethernet Adapter f...	192.168.115.1	Ethernet
<input type="checkbox"/>	VMware Virtual Ethernet Adapter f...	192.168.152.1	Ethernet
<input checked="" type="checkbox"/>	Atheros AR8131 PCI-E Gigabit Eth...	10.177.40.108	Ethernet
<input checked="" type="checkbox"/>	Realtek PCIe GBE Family Control...	192.168.0.3	Ethernet

- » **c** : Click the Network button and check that the correct PC network device is selected. (At least one network device must be selected.)
- » **d** : Click the Start Server button.



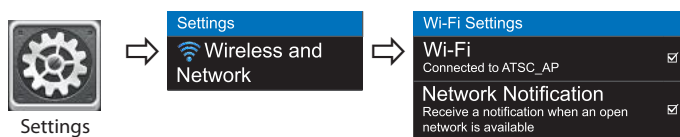
- 3 You can view and enjoy shared content by using the TV's Smart Share function.
  - » **e** : Select the Linked device on the TV's Smart Share Card to enjoy content from your PC.



## SMART TV Quick Setup Guide

### DLNA Connection to Smartphone

- 1 Check that Wi-Fi is enabled on your smartphone. To use DLNA, both devices must on the same local network.



- 2 Install/run the app for sharing content on your smartphone (It's called SmartShare on LG phones).
- 3 Enable your smartphone to share content files with other devices.
- 4 Select the file type you want to play (movie, audio or photo).
- 5 Select a movie, music or photo file to play on the TV.
- 6 Add the selected file to the playlist.
- 7 Select a TV model name on which to play the files. (The TV model name is on a label on the side of the TV and in the customer support menu.)
- 8 Play the media file to view and enjoy it on your TV.

### Updating the TV Firmware

HOME → **Settings** → **SUPPORT** → **Software Update**

By default, the TV will notify you of new software updates. You can use the Software Update menu to manually check for available updates.

<b>Software Update</b>	Set it to <b>On</b> . When an updated file is detected, the file is downloaded automatically.
<b>Automatic Update Mode</b>	If an update is available, the update automatically starts without prompting.
<b>Check Update Version</b>	Checks the latest update version installed. When a new update is available, the download process can be performed manually.

### Tag On



Tag On

Touch the smartphone to the Tag On sticker.

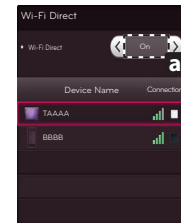
- Using an LG smartphone with the NFC and Miracast functions, you can:
    - TV to Phone: run the LG TV Remote app on the smartphone.
    - Phone to TV: view the screen of the smartphone on the TV.
- To end the connection, touch the smartphone to the Tag On sticker again.  
(You can also disable the Miracast function on the smartphone.)

### Wi-Fi Direct Setting

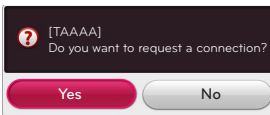
HOME → **Settings** → **NETWORK** → **Wi-Fi Direct**

If a local network is not available, you can connect a portable device directly to the TV using Wi-Fi Direct. With Smart Share, you can share files or screens of devices connected to **Wi-Fi Direct**.

[Device Screen]



[TV Screen]

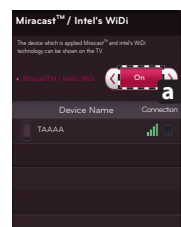


- 1 If **Wi-Fi Direct** is set to **On**, a list of available devices appears.
  - » To use **Wi-Fi Direct**, go to **Settings** → **NETWORK** and set **Wi-Fi Direct(a)** to **On**.
- 2 When you are prompted to request connection, select **Yes**. **Wi-Fi Direct** is now connected to your TV.

\*If you are not using **Wi-Fi Direct** to minimize the interference between Wi-Fi devices, it is recommended to set **Wi-Fi Direct(a)** to **Off**. You can only use devices that support **Wi-Fi Direct**.

### Miracast™ Setting

Miracast allows a portable device to securely send video and sound to the TV wirelessly.

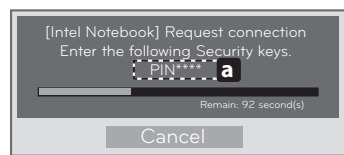
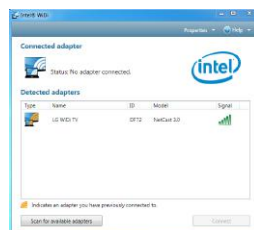


- 1 Miracast should be set to 'ON' on your mobile device And TV.  
Go to the Network settings to set the Miracast.
- 2 When your TV or portable device is detected, select the device.

### WiDi (Wireless Display) Setting

WiDi represents Wireless Display. It is a system that received AV stream that can be played back on the laptop supporting Intel WiDi. It can be used only for Live TV and external input (Composite/Component/HDMI). Other than these modes, your computer cannot detect LG Smart TV.

- 1 **Intel's WiDi** is set to **On**. Connect your laptop to AP(Router). (Without AP, it is possible to this function; it is recommended to connect to AP.) Your laptop runs the Intel WiDi() program.
- 2 It detects LG Smart TVs available, which supports WiDi. In the list, select the TV you want and click Connect. Enter the number(**a**) shown on the screen into the input field(**b**) on your laptop and then click Continue. (4-digit number: under WiDi 3.1.29, 8-digit number: above WiD 3.5)



TV Screen



Notebook Screen

- 3 The TV screen appears on the laptop screen. The wireless environment may affect the screen display. If the connection is poor, the Intel WiDi connection may be lost.

\* LG TVs do not need to register.  
\* TV sound setting for **Digital Sound Out** is set to **PCM**.  
\* For more information on Intel WiDi, visit 'http://intel.com/go/widi'.  
\* On the **Intel's WiDi**, WiDi device is not searched. Close the **Intel's WiDi**, then search WiDi.  
\* You can control your PC using the Magic Remote Control.  
\* Intel's WiDi laptop is not appeared in the Miracast /WiDi menu in TV network menu.

### On-Screen Remote

To use the **Universal Control** function

With the Magic Remote Control, you can easily control your set-top box, Blu-ray player, home theater system, and Sound Bar.

- 1 Check if the device is connected to the TV.
- 2 After pressing the button on the Magic Remote Control, select the device you want to control in the Change Device tab. The Screen Remote that can control the device appears.

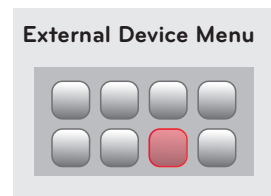
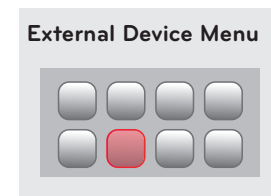


- 3 You can control external devices using the Screen Remote on the screen.  
(This may not work with the button for some models.)



- » **a**: Change Device tab
- » **b**: Device control buttons
- » **c**: Expand the ScreenRemote
- » **d**: Exits the Screen Remote
- » **e**: Moves the position of the ScreenRemote to left or right

- 4 Control external devices using the navigation keys, wheel (OK), or BACK button on the Magic Remote Control.



Please call LG Customer Service if you experience any problems.