

### **WARNING**

To prevent possible **SERIOUS INJURY** or **DEATH** from a closing garage door:

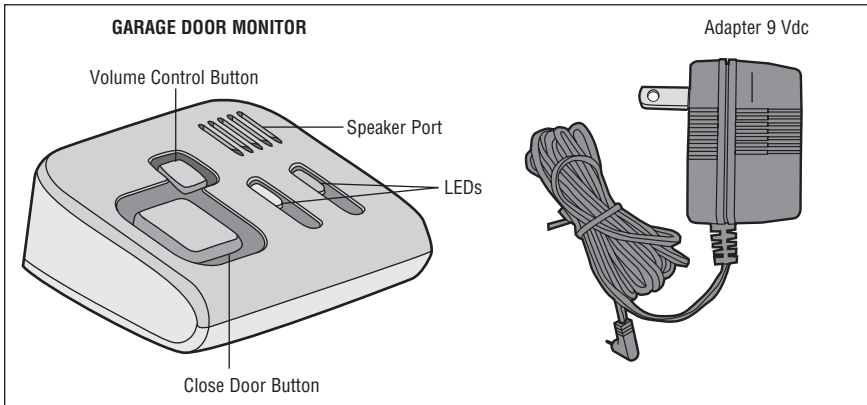
- NEVER permit children to operate or play with door control push buttons or remote control transmitters.
- Activate door **ONLY** when it is properly adjusted and there are no obstructions to door travel.
- This door monitor works with an operator system equipped with an unattended operation feature. The door could move unexpectedly. **NO ONE SHOULD CROSS THE PATH OF THE MOVING DOOR.**

NOTICE: To comply with FCC and or Industry Canada rules (IC), adjustment or modifications of this receiver and/or transmitter are prohibited, except for changing the code setting or replacing the battery. **THERE ARE NO OTHER USER SERVICEABLE PARTS.**

Tested to Comply with FCC Standards for Home or office use. Operation is subject to the following two conditions: (1) this device may not cause harmful interference, and (2) this device must accept any interference received, including interference that may cause undesired operation.

## Introduction

The garage door monitor indicates the status of your garage door from inside the home. The garage door monitor can be programmed with up to four garage door openers. The garage door monitor is compatible with MyQ® enabled garage door openers only.



## Features

### VOLUME CONTROL BUTTON

The Volume Control button allows you to set the volume to low, medium, high, or off.

### CLOSE DOOR BUTTON

The Close Door button will close all open doors. Both LEDs will blink simultaneously as the doors are closing. A long beep will be heard confirming the doors are closed.

**For more information,  
please visit [www.devancocanada.com](http://www.devancocanada.com) or call toll free at 855-931-3334**

## Features (Continued)

### LED INDICATORS

LEDs		MEANING
Red	Green	
Blinking	Off	At least one garage door is open
Off	Solid	ALL doors are closed
Solid	Off	No signal has been received from a programmed garage door opener within the last 20 minutes (implies a power outage or a garage door opener malfunction)
Solid	Solid	The garage door monitor has been successfully programmed
Red and green LEDs blink simultaneously		The garage door(s) is closing after pressing the Close Door button
Red and green LEDs blink alternately and slow		The garage door monitor is not programmed to any garage door opener
Red and green LEDs blink alternately fast		The garage door monitor is in programming mode
Off	Off	No power to the garage door monitor

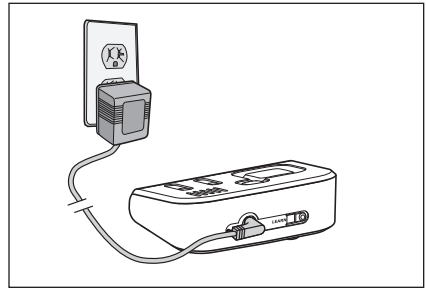
### AUDIBLE ALERT

Audible tones alert you of the garage door(s) status. The Volume Control button allows you to set the volume to low, medium, high, or off.

AUDIBLE TONES	MEANING
One short beep*	<ul style="list-style-type: none"> <li>• Initiated Programming</li> <li>• Initiated Erase Memory</li> <li>• Memory has been erased</li> <li>• Close Door button has been pressed</li> </ul>
Two short beeps	The garage door monitor has been successfully programmed
Two long beeps	Failed attempt to program fifth garage door opener
Three short beeps*	A garage door(s) is opening
One short beep repeating*	A garage door(s) is open
One long beep repeating*	No communication with the garage door opener
One long beep*	Door closes successfully after pressing Close Door button
* These beeps will not be heard if the volume is set to OFF.	

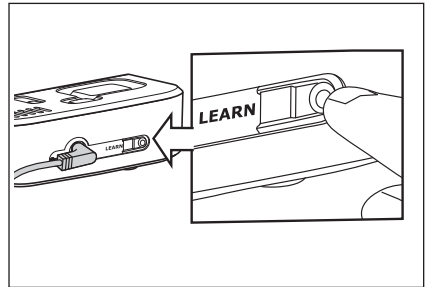
## Setup

Connect the adapter to the garage door monitor and a standard 110 Vac outlet.

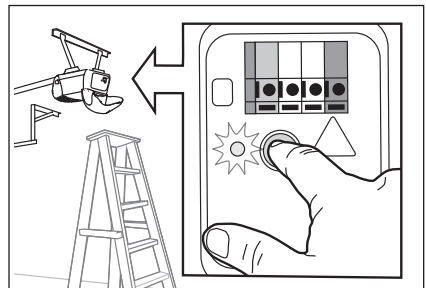


## Programming

1. Press and release the Learn button on the back of the garage door monitor.
2. Within 60 seconds, press and release the Learn button on the garage door opener. Two short beeps will confirm the garage door monitor has been successfully programmed.



**NOTE:** To program additional garage door openers, repeat the steps above on each individual garage door opener. The garage door monitor can be programmed with up to four garage door openers.



## ERASE MEMORY

To erase all programmed garage door openers from the garage door monitor, press and hold the Learn button on the garage door monitor for at least six seconds. One short beep will be heard at the beginning, one short beep will confirm that all codes have been erased.

***HOW TO ORDER  
REPAIR PARTS***

**DEVANCO CANADA**

19192 HAY ROAD, UNIT Q  
SUMMERSTOWN, ON K0C 2E0

TOLL FREE: 855-931-3334

[www.devancocanada.com](http://www.devancocanada.com)

**WHEN ORDERING REPAIR PARTS  
PLEASE SUPPLY THE  
FOLLOWING INFORMATION:**

- ✓ PART NUMBER
- ✓ DESCRIPTION
- ✓ MODEL NUMBER