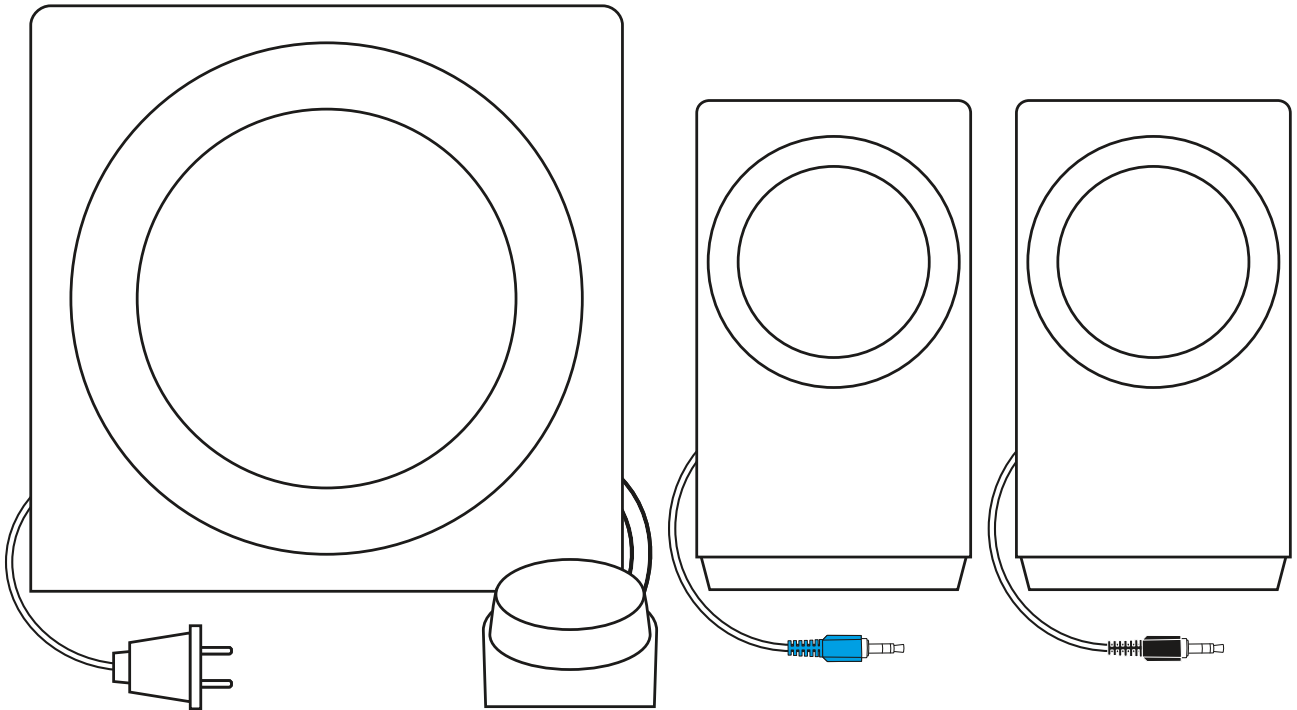


Z337 SPEAKER SYSTEM WITH *BLUETOOTH*[®]

SYSTÈME DE HAUT-PARLEURS Z337 AVEC *BLUETOOTH*[®]

Complete Setup Guide
Guide d'installation complet



logitech[®]

CONTENTS

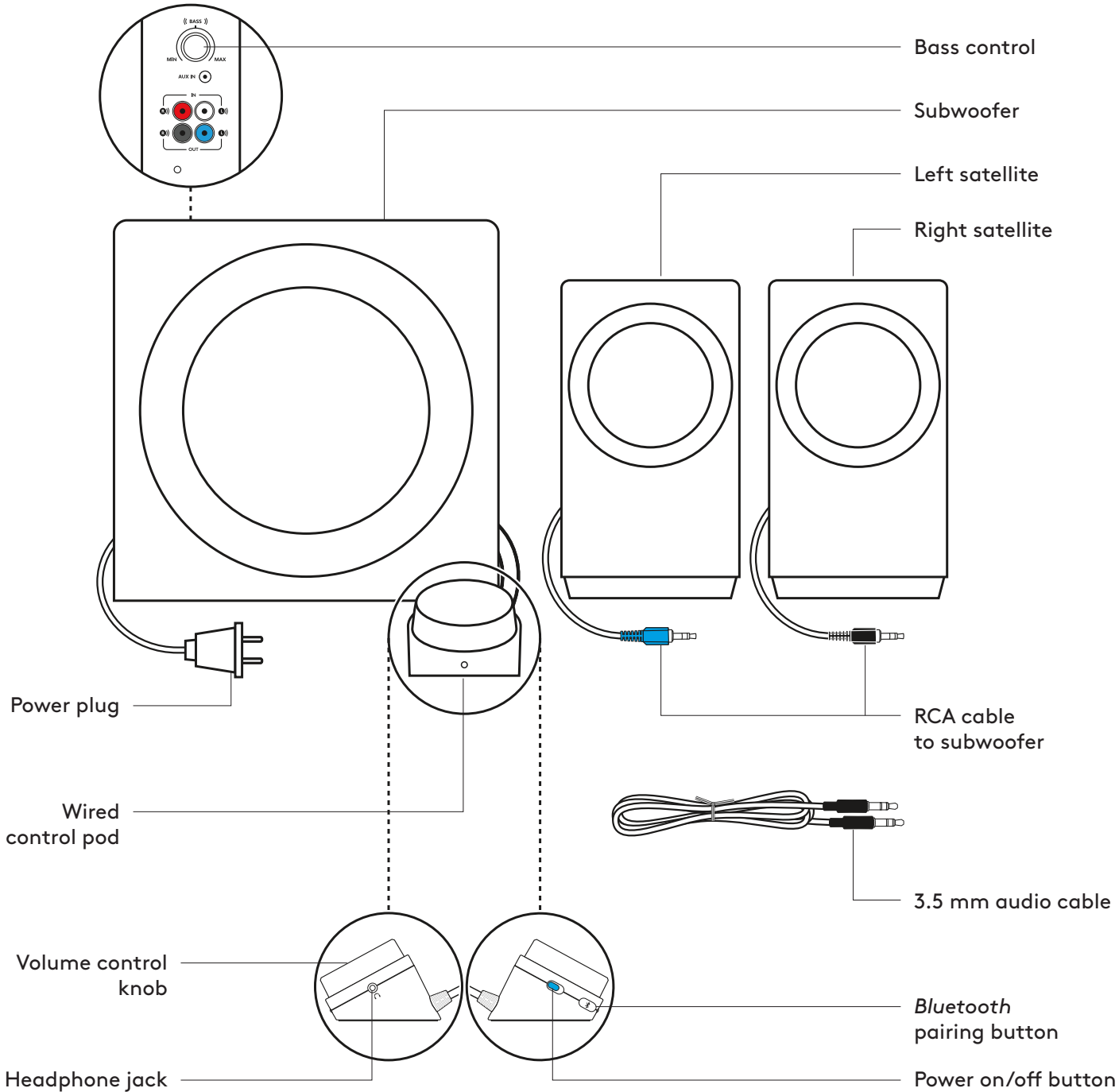
English3

Français9

Español 15

Português 21

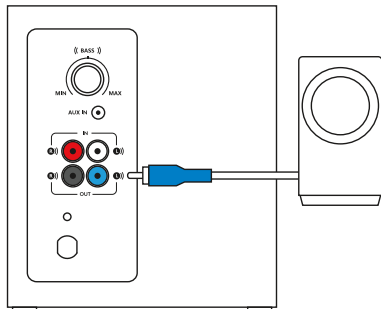
KNOW YOUR PRODUCT



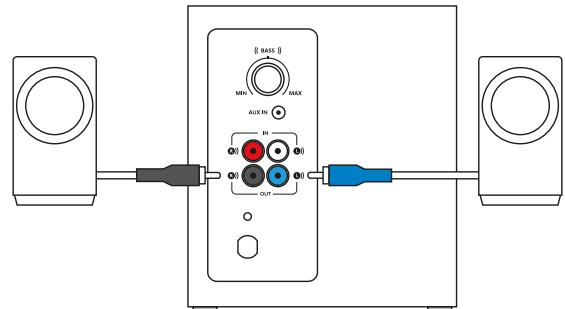
CONNECT THE SPEAKERS

1. Plug the blue RCA connector on the left satellite into the blue subwoofer jack.
2. Plug the black RCA connector on the right satellite into the black subwoofer jack.
3. Plug the power plug into an electrical outlet.

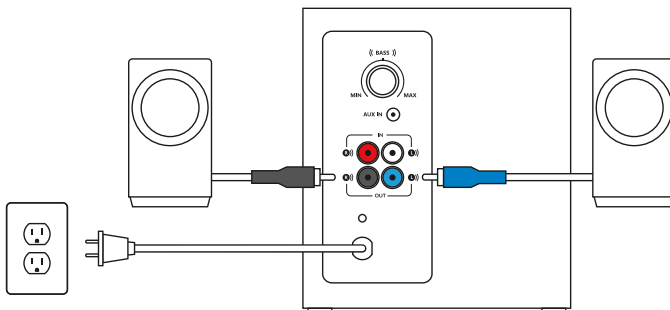
1



2



3

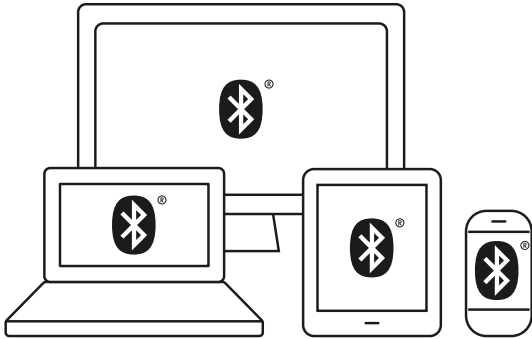


CONNECT TO AUDIO SOURCE

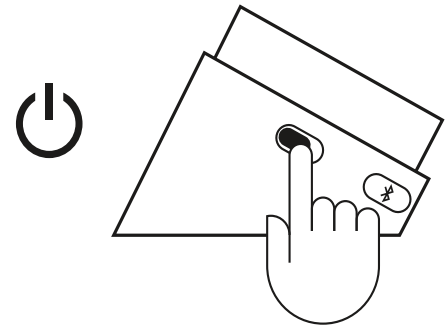
Using *Bluetooth*®:

1. Turn on *Bluetooth* on your device.
2. Turn the speakers on.
3. Press and hold the *Bluetooth* button to activate pairing mode. The LED on the control pod will blink quickly.
4. Select and connect to “Logitech Z337” on your *Bluetooth* device list.
5. To pair with your second device via *Bluetooth*, repeat step 3 and step 4. Make sure to turn on *Bluetooth* on your device.

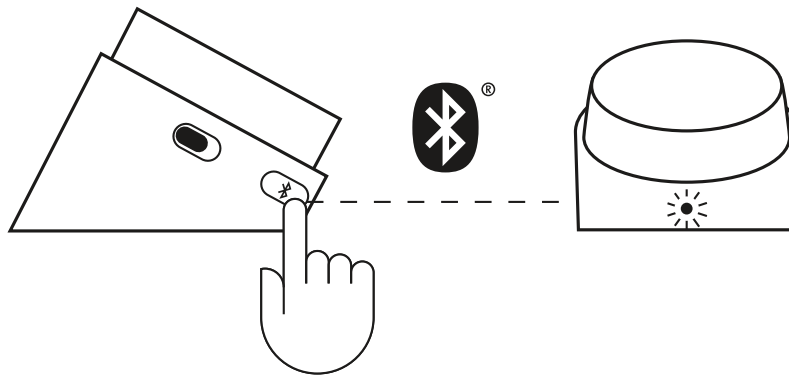
1



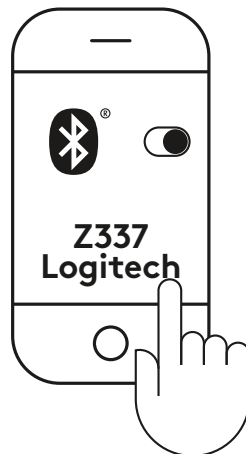
2



3



4



CONNECT TO AUDIO SOURCE (CONT'D)

1A. For RCA connection:

Connect one end of the RCA cable to the corresponding RCA jack on the back of the subwoofer. Then connect the other end of the cable to the RCA outlet on your device (TV and gaming console, etc.).

Note: the RCA cable is not included in the box and must be purchased separately.

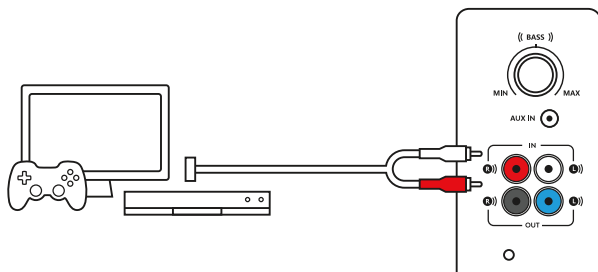
1B. For 3.5 mm connection:

Connect one end of the provided 3.5 mm cable to the auxiliary input on the back of the subwoofer. Then connect the other end of the cable to the 3.5 mm audio jack on your device.

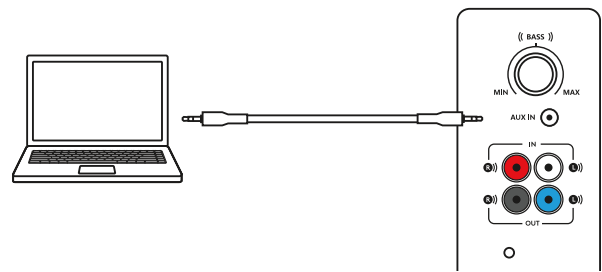
2. Plug your headphones into the headphone jack on the control pod. Adjust the volume either from the control pod or the audio source.

3. Power speakers on/off by sliding the power on/off button on the wired control pod.

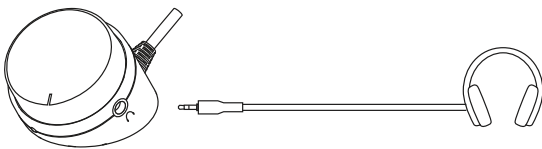
1A



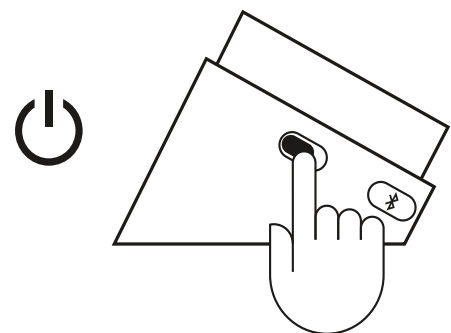
1B



2



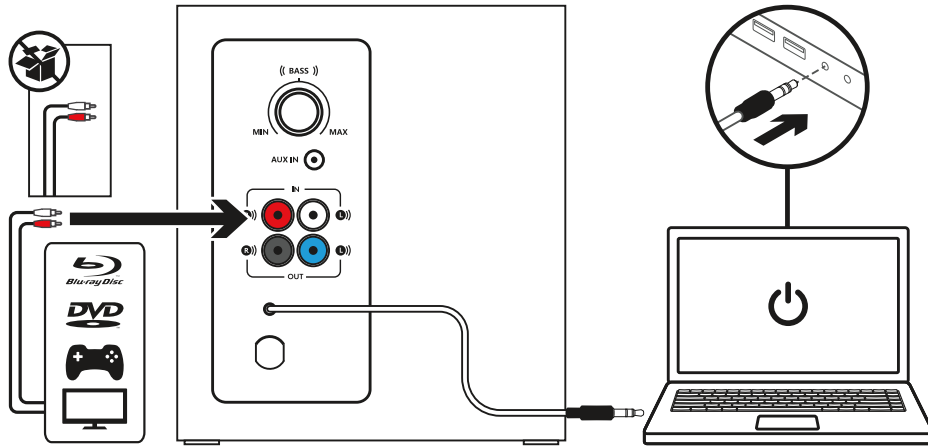
3



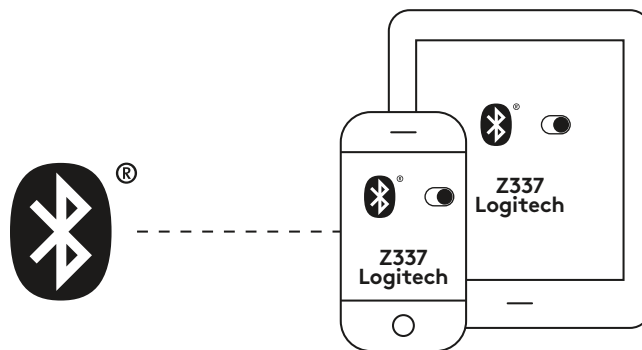
CONNECT TO THREE DEVICES SIMULTANEOUSLY

1. Connect up to three devices at the same time through the RCA connector on the back of the subwoofer, the 3.5mm cable on the subwoofer and *Bluetooth*.
2. You can pair up to eight *Bluetooth* source devices with your speakers and connect to 2 of them at once.
3. To switch between audio sources just pause audio on one connected device and play audio from the other connected device.

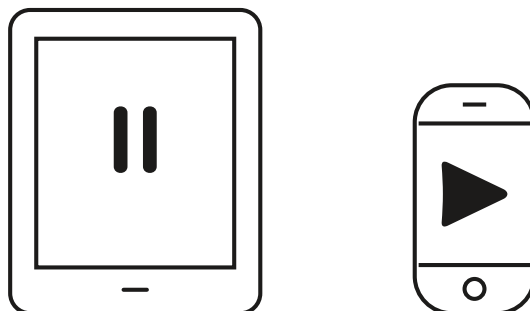
1



2



3



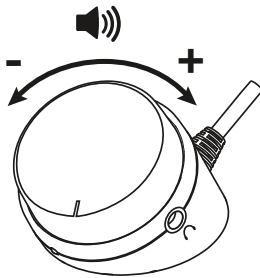
ADJUST THE VOLUME

1. Adjust the volume of Z337 with the knob on the control pod.
Turn the knob clockwise (to the right) to increase volume.
Turn the knob counter-clockwise (to the left) to decrease volume.

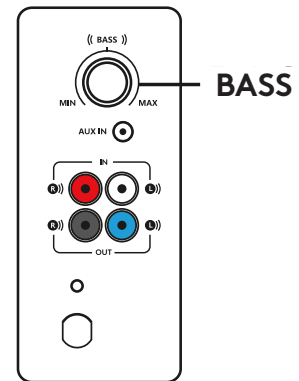
ADJUST THE BASS

2. Adjust the bass level by turning the bass control knob located at the back of your subwoofer.
Turn bass knob to the right for deeper bass or to the left for less bass.

1

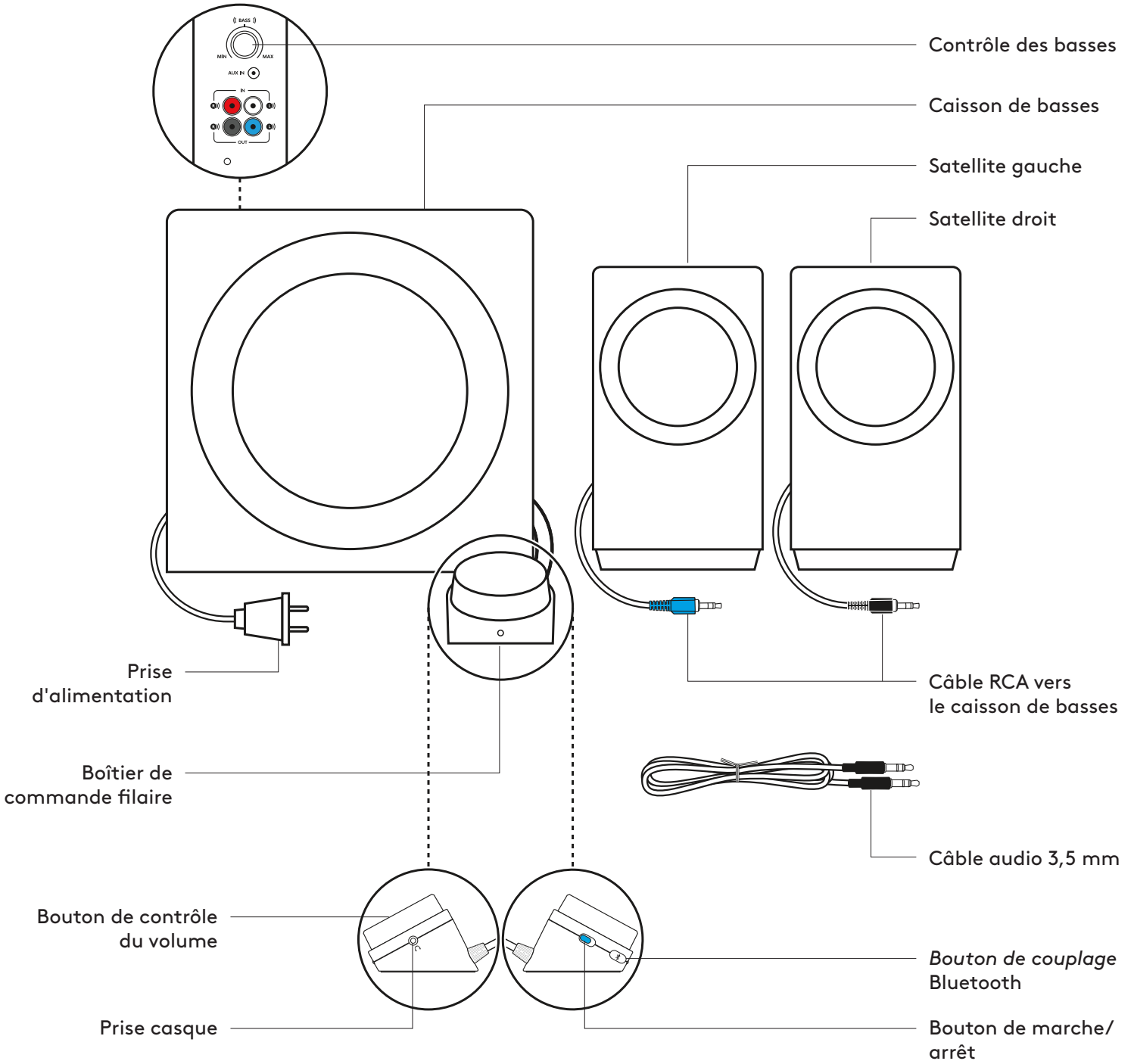


2



www.logitech.com/support/Z337

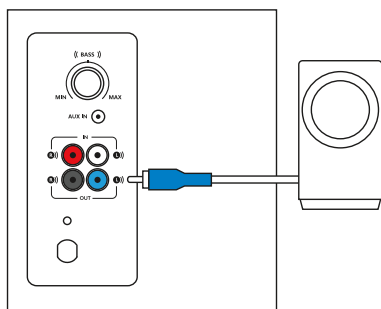
PRÉSENTATION DU PRODUIT



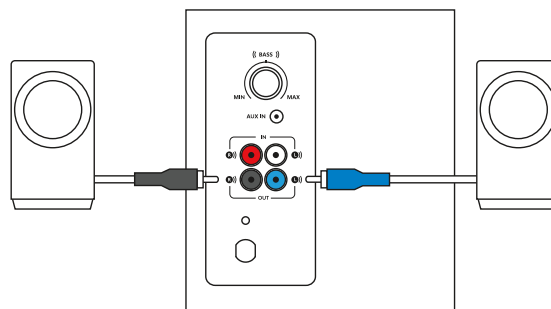
CONNEXION DES HAUT-PARLEURS

1. Branchez le connecteur RCA bleu sur la prise bleue du caisson de basse située sur le satellite gauche.
2. Branchez le connecteur RCA noir sur la prise noire du caisson de basses située sur le satellite droit.
3. Branchez l'adaptateur secteur à une prise électrique.

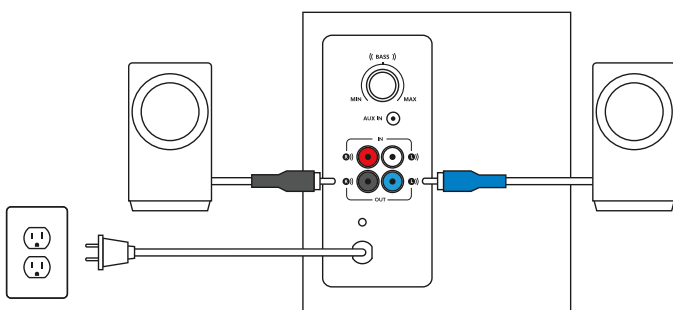
1



2



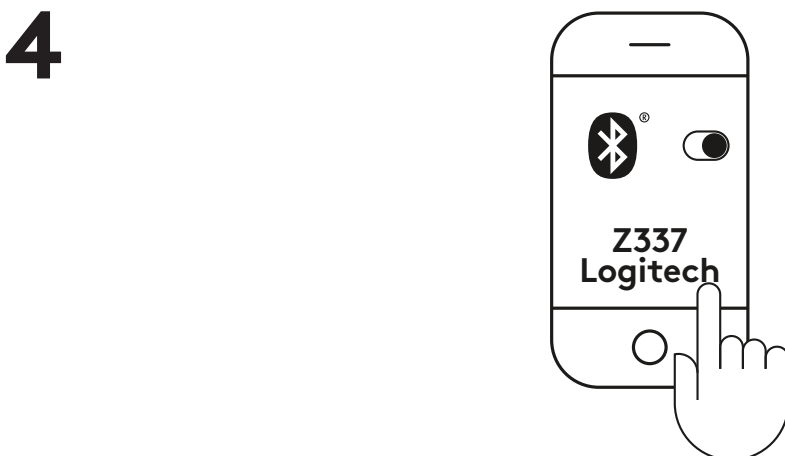
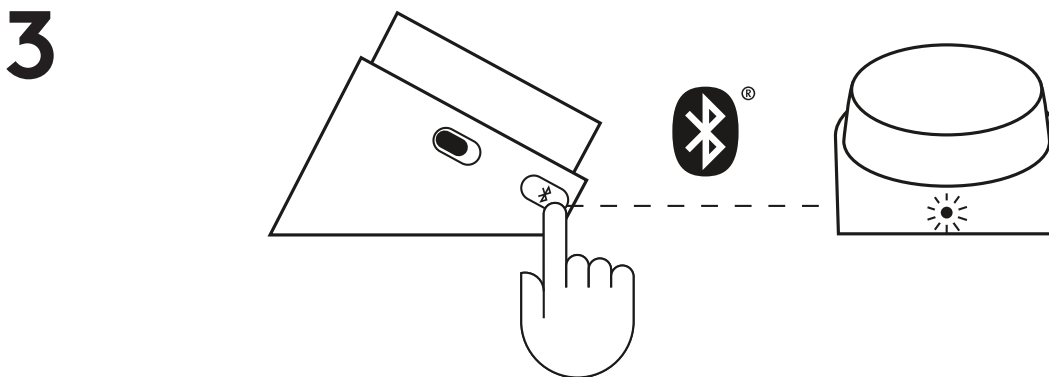
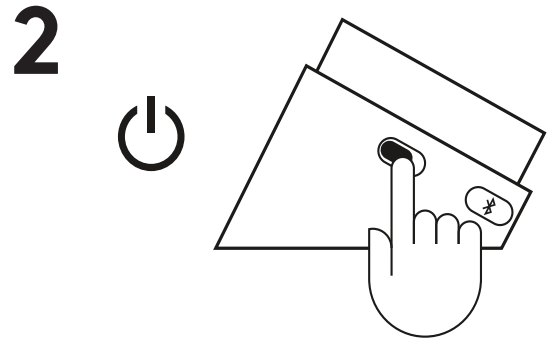
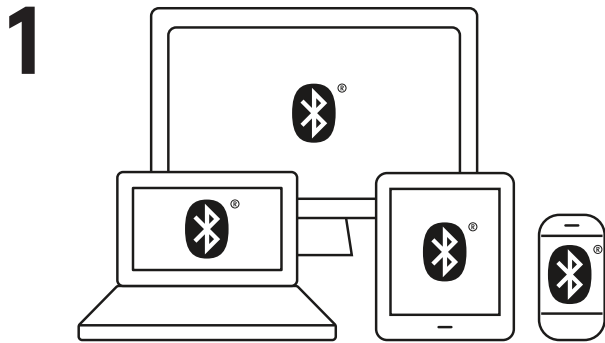
3



CONNEXION À LA SOURCE AUDIO

Utilisation du *Bluetooth*®:

1. Activez le *Bluetooth* sur votre dispositif.
2. Mettez les haut-parleurs sous tension.
3. Appuyez longuement sur le bouton *Bluetooth* pour activer le mode de couplage. Le témoin lumineux sur le boîtier de commande clignote alors rapidement.
4. Sélectionnez et connectez-vous à "Logitech Z337" sur votre liste de dispositifs *Bluetooth*.
5. Pour coupler votre deuxième dispositif via *Bluetooth*, répétez les étapes 3 et 4. Assurez-vous d'activer le *Bluetooth* sur le dispositif.



CONNEXION À LA SOURCE AUDIO (SUITE)

1A. Pour la connexion RCA:

Connectez une extrémité du câble RCA à la prise RCA correspondante à l'arrière du caisson de basses. Insérez ensuite l'autre extrémité du câble dans la prise RCA de votre dispositif (téléviseur, console de jeu, etc.).

Remarque: le câble RCA n'est pas fourni et doit être acheté séparément.

1B. Pour la connexion 3,5 mm:

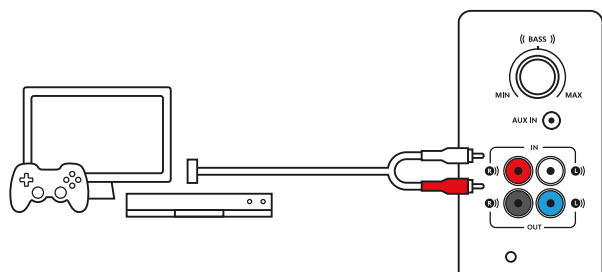
Connectez une extrémité du câble 3,5mm fourni sur l'entrée auxiliaire à l'arrière du caisson de basses.

Connectez ensuite l'autre extrémité du câble dans la prise audio 3,5mm de votre dispositif.

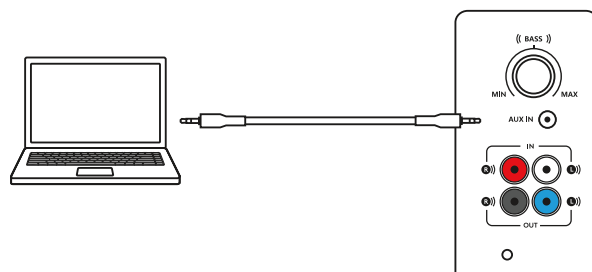
2. Branchez votre casque dans la prise audio du boîtier de commande. Réglez le volume à partir du boîtier de commande ou de la source audio.

3. Allumez ou éteignez les haut-parleurs à l'aide du bouton marche/arrêt situé sur le boîtier de commande filaire.

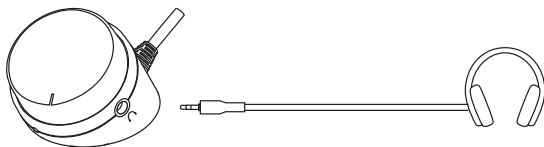
1A



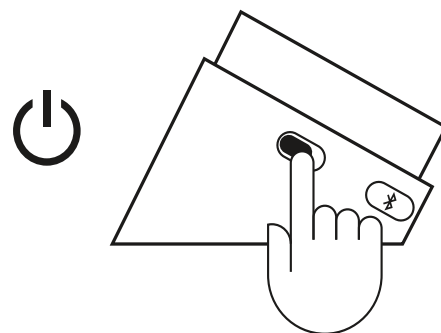
1B



2



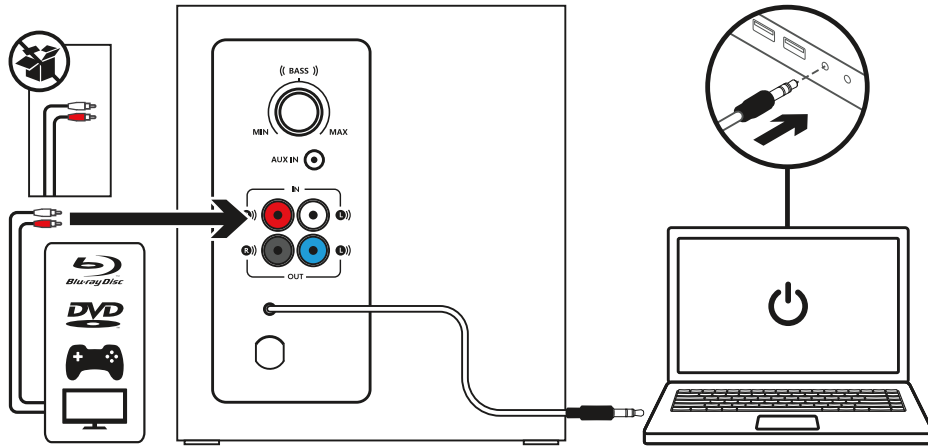
3



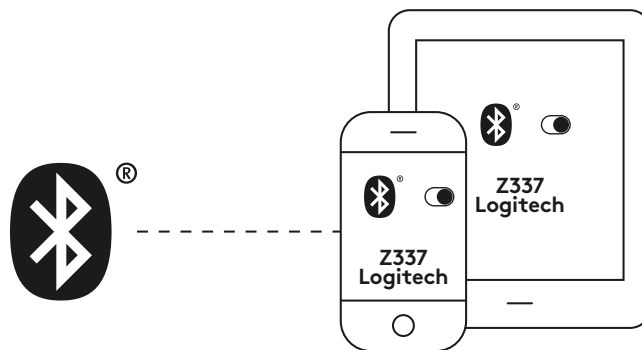
CONNECTER TROIS DISPOSITIFS SIMULTANÉMENT

1. Connectez jusqu'à trois dispositifs en même temps en passant par le connecteur RCA situé à l'arrière du caisson de basses, le câble 3,5mm du caisson de basses et le *Bluetooth*.
2. Vous pouvez coupler jusqu'à huit dispositifs *Bluetooth* sources avec vos haut-parleurs et connecter simultanément jusqu'à deux dispositifs.
3. Pour basculer entre les sources audio, il suffit de suspendre l'audio sur un dispositif connecté et de lire l'audio depuis l'autre dispositif connecté.

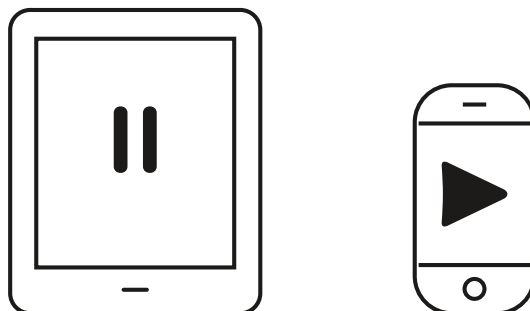
1



2



3



AJUSTEMENT DU VOLUME

1. Réglez le volume du Z337 avec bouton du boîtier de commande.

Tournez le bouton dans le sens horaire (vers la droite) pour augmenter le volume.

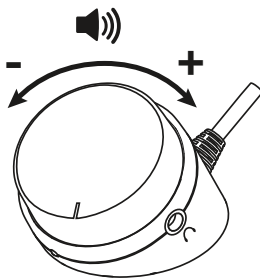
Tournez le bouton dans le sens antihoraire (vers la gauche) pour diminuer le volume.

RÉGLER LES BASSES

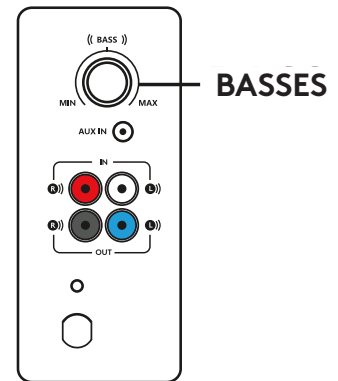
2. Réglez le niveau des basses en tournant le bouton de contrôle des basses à l'arrière de votre caisson de basses.

Tournez le bouton des basses vers la droite pour augmenter la profondeur des basses et vers la gauche pour la réduire.

1

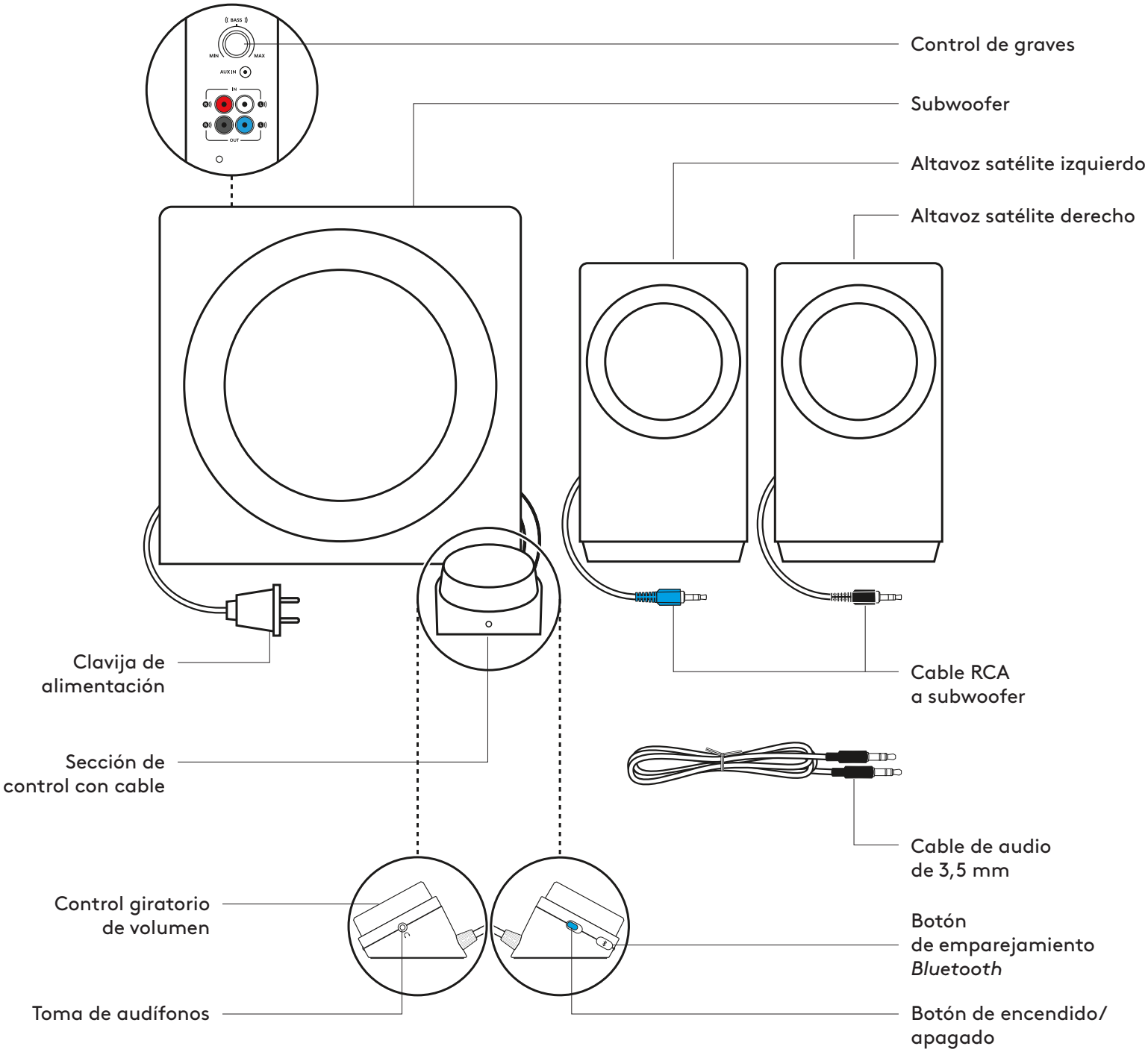


2



www.logitech.com/support/Z337

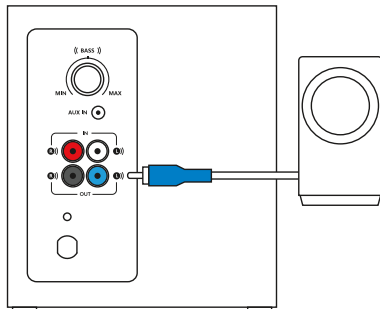
COMPONENTES DEL PRODUCTO



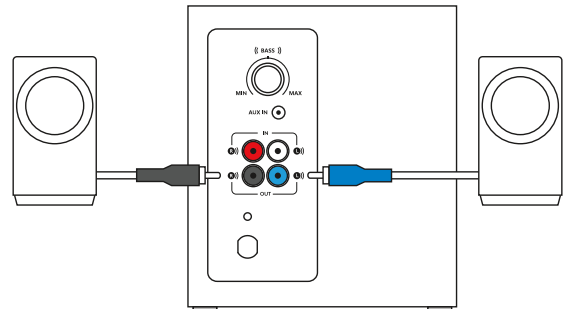
CONECTA LOS ALTAVOCES

1. Conecta el conector RCA azul del altavoz satélite izquierdo a la toma de subwoofer azul.
2. Conecta el conector RCA negro del altavoz satélite derecho a la toma de subwoofer negra.
3. Conecta la clavija de alimentación a una toma de corriente.

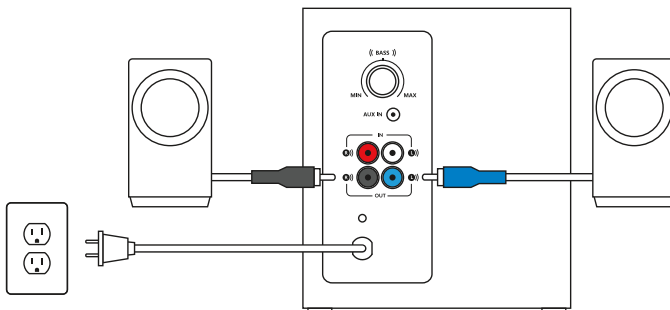
1



2



3

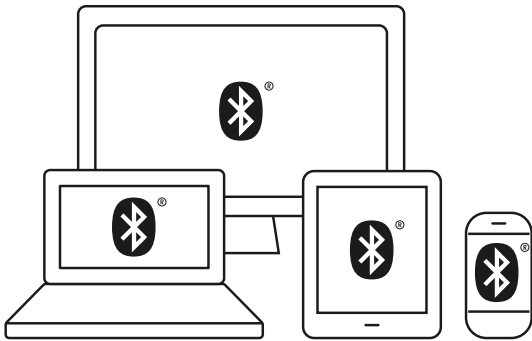


CONECTA A LA FUENTE DE AUDIO

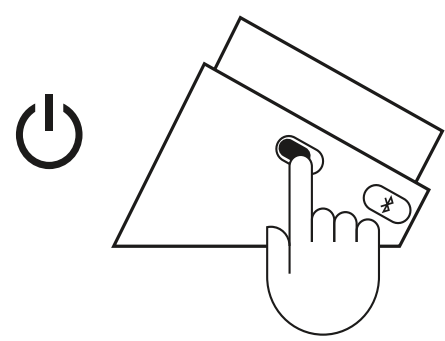
Con *Bluetooth*®:

1. Activa la conectividad *Bluetooth* en tu dispositivo.
2. Enciende los altavoces.
3. Mantén presionado el botón *Bluetooth* para activar el modo de emparejamiento. El LED en la sección de control emitirá destellos rápidos.
4. Selecciona y conecta "Logitech Z337" en tu lista de dispositivos *Bluetooth*.
5. Para emparejar con tu segundo dispositivo a través de *Bluetooth*, repite el paso 3 y el paso 4. Asegúrate de activar *Bluetooth* en tu dispositivo.

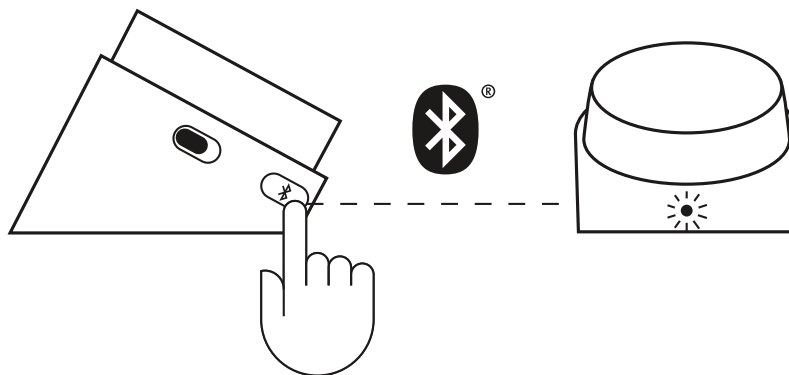
1



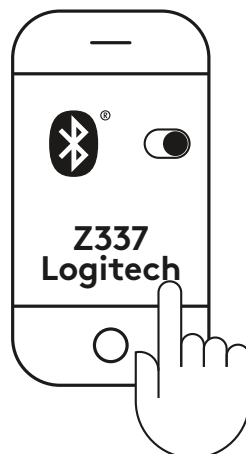
2



3



4



CONECTA A LA FUENTE DE AUDIO (CONT.)

1A. Para la conexión RCA:

Conecta un extremo del cable RCA a la toma RCA correspondiente en la parte posterior del subwoofer. Luego conecta el otro extremo del cable a la toma RCA de tu dispositivo (TV y consola de juegos, etc.).

Nota: el cable RCA no se incluye en la caja y debe adquirirse por separado.

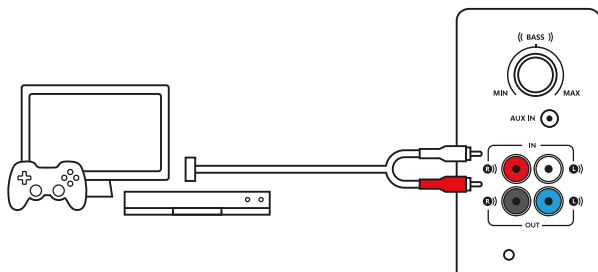
1B. Para la conexión de 3,5 mm:

Conecta un extremo del cable de 3,5 mm suministrado a la entrada auxiliar en la parte posterior del subwoofer. Luego conecta el otro extremo del cable a la toma de audio de 3,5 mm de tu dispositivo.

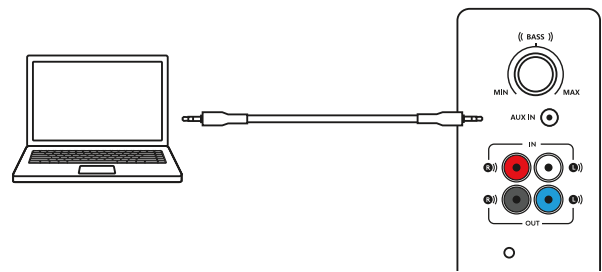
2. Conecta los audífonos a la toma de audífonos de la sección de control. Ajusta el volumen desde la sección de control o la fuente de audio.

3. Enciende o apaga los altavoces deslizando el botón de encendido/apagado en la sección de control con cable.

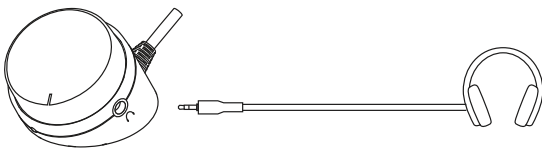
1A



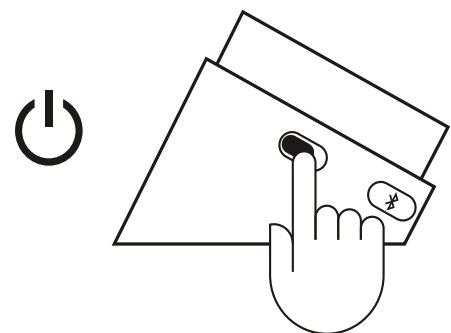
1B



2



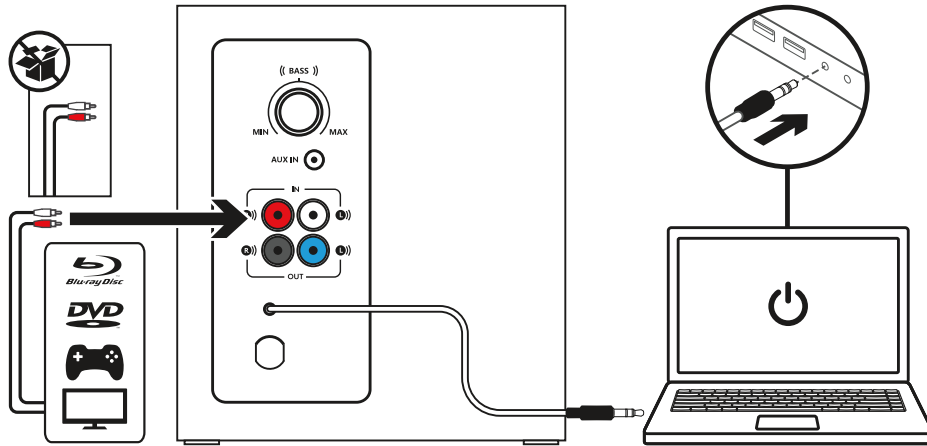
3



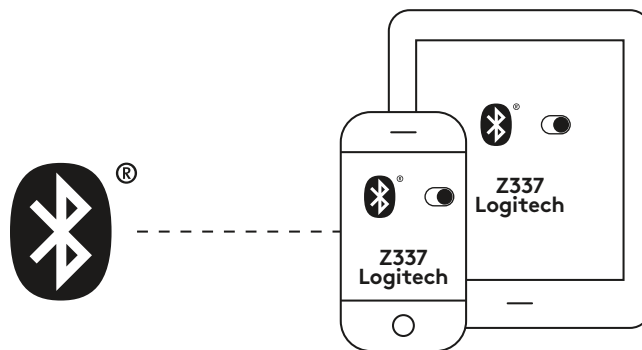
CONECTA TRES DISPOSITIVOS A LA VEZ

1. Puedes conectar hasta tres dispositivos al mismo tiempo usando el conector RCA en la parte posterior del subwoofer, el cable de 3,5 mm del subwoofer y *Bluetooth*.
2. Puedes emparejar los altavoces con hasta ocho dispositivos *Bluetooth* y conectarlos a dos de ellos simultáneamente.
3. Para cambiar de fuente de audio, simplemente pon en pausa el audio en un dispositivo conectado y reproduce audio del otro dispositivo conectado.

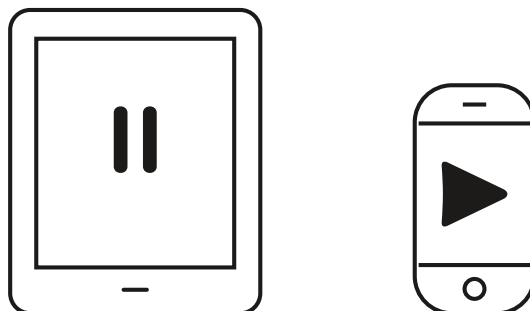
1



2



3



AJUSTA EL VOLUMEN

1. Ajusta el volumen de los altavoces Z337 con el mando de la sección de control.

Gira el mando en el sentido de las agujas del reloj (hacia la derecha) para subir el volumen.

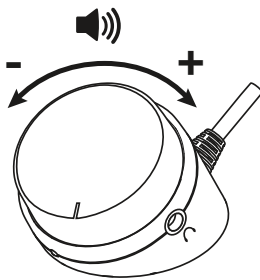
Gira el mando en el sentido contrario al de las agujas del reloj (hacia la izquierda) para bajar el volumen.

AJUSTA LOS GRAVES

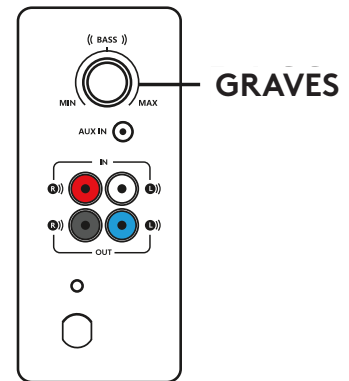
2. Ajusta el nivel de graves girando el control situado en la parte posterior del subwoofer.

Gira el control giratorio de graves hacia la derecha para obtener unos graves más profundos o hacia la izquierda para obtener menos graves.

1

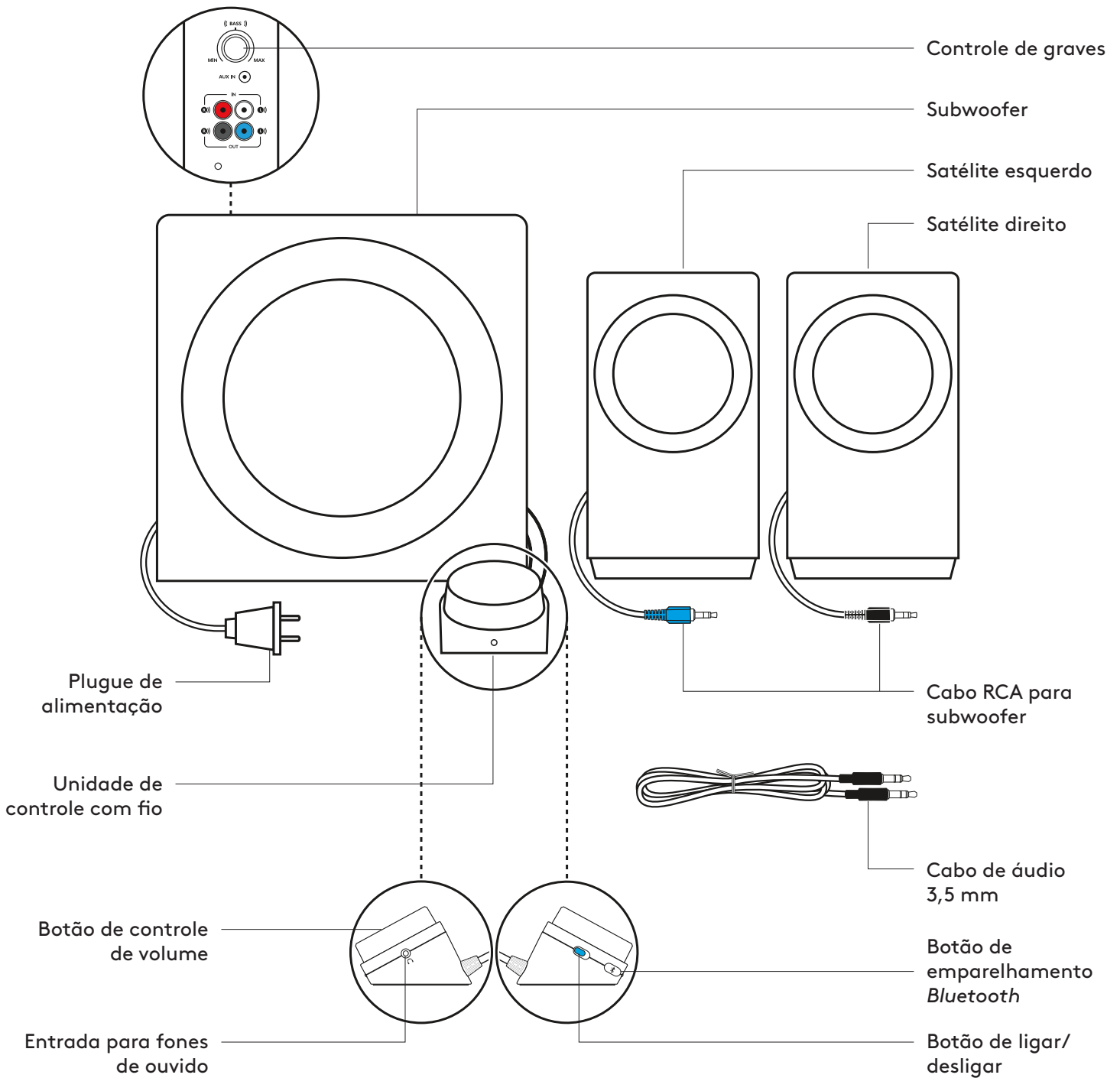


2



www.logitech.com/support/Z337

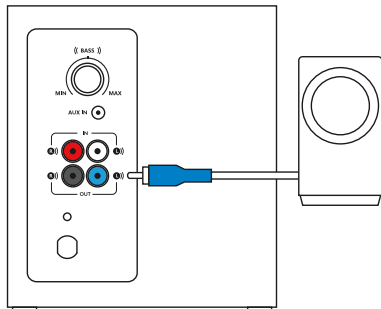
CONHEÇA O SEU PRODUTO



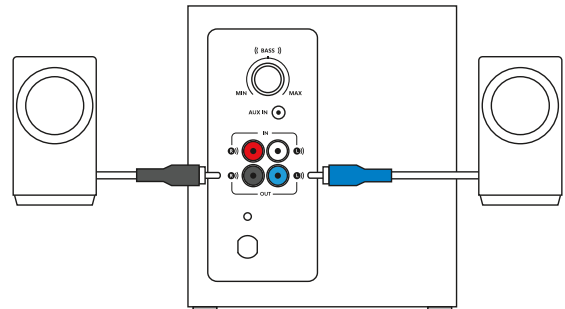
CONECTAR OS ALTO-FALANTES

1. Conecte o conector RCA do satélite esquerdo à entrada azul do subwoofer.
2. Conecte o conector RCA do satélite direito à entrada preta do subwoofer.
3. Conecte o plugue de alimentação a uma tomada.

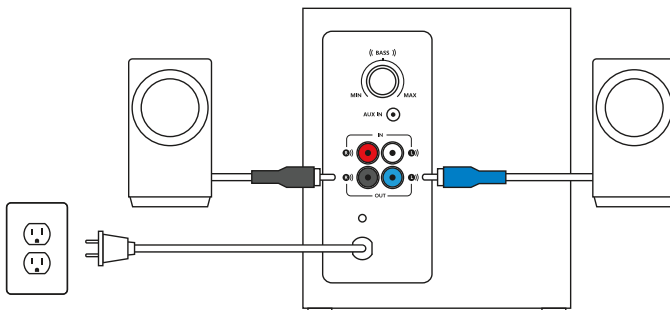
1



2



3

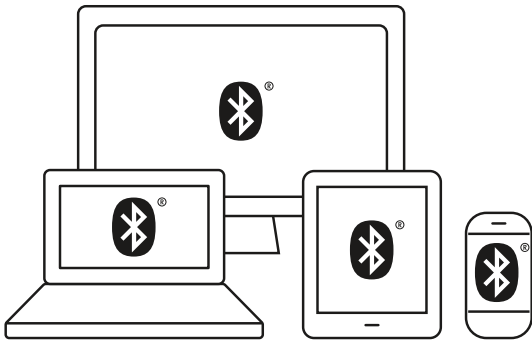


CONECTAR À FONTE DE ÁUDIO

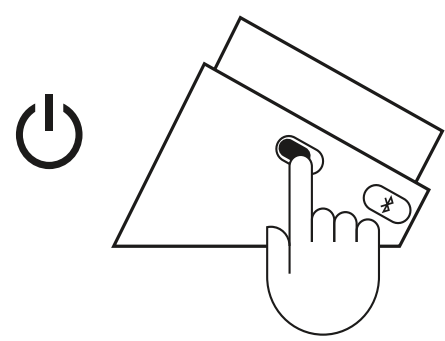
Usando o *Bluetooth*®:

1. Ligue o *Bluetooth* do dispositivo.
2. Ligue as caixas de som.
3. Mantenha pressionado o botão *Bluetooth* para ativar o modo de pareamento. O LED na unidade de controle piscará rapidamente.
4. Selecione e conecte ao "Logitech Z337" na lista de dispositivos *Bluetooth*.
5. Para emparelhar com seu segundo dispositivo via *Bluetooth*, repita as etapas 3 e 4. Certifique-se de ativar o *Bluetooth* em seu dispositivo.

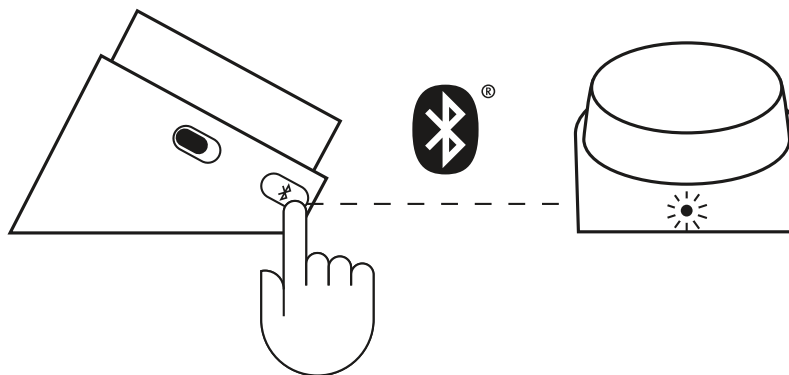
1



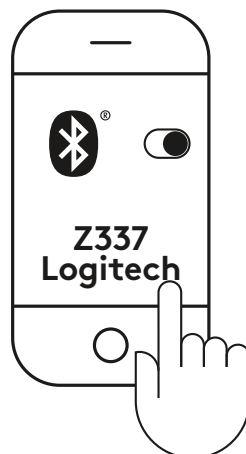
2



3



4



CONECTAR À FONTE DE ÁUDIO (CONTINUAÇÃO)

1A. Para a conexão RCA:

Conecte uma extremidade do cabo RCA à entrada RCA correspondente na parte traseira do subwoofer. Em seguida, conecte a outra extremidade do cabo à tomada RCA do dispositivo (TV e console de jogos, etc.).

Observação: O cabo RCA não está incluído na embalagem e deve ser adquirido separadamente.

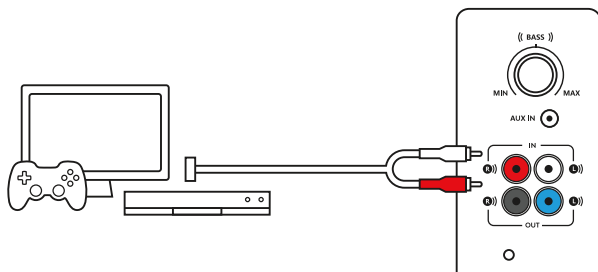
1B. Para a conexão de 3,5 mm:

Conecte uma extremidade do cabo de 3,5 mm fornecido à entrada auxiliar na parte traseira do subwoofer. Em seguida, conecte a outra extremidade do cabo à entrada de áudio de 3,5 mm do dispositivo.

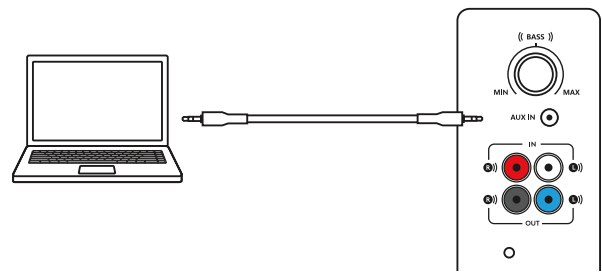
2. Conecte os fones de ouvido na entrada para fones de ouvido de 3,5 mm da unidade de controle. Ajuste o volume a partir da unidade de controle ou da fonte de áudio.

3. Ligue ou desligue as caixas de som deslizando o botão de liga/desliga na unidade de controle com fio.

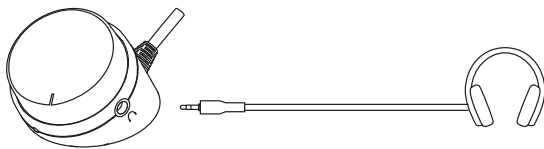
1A



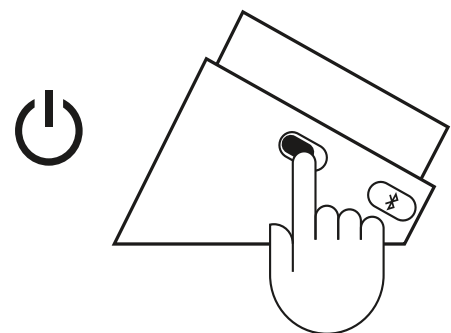
1B



2



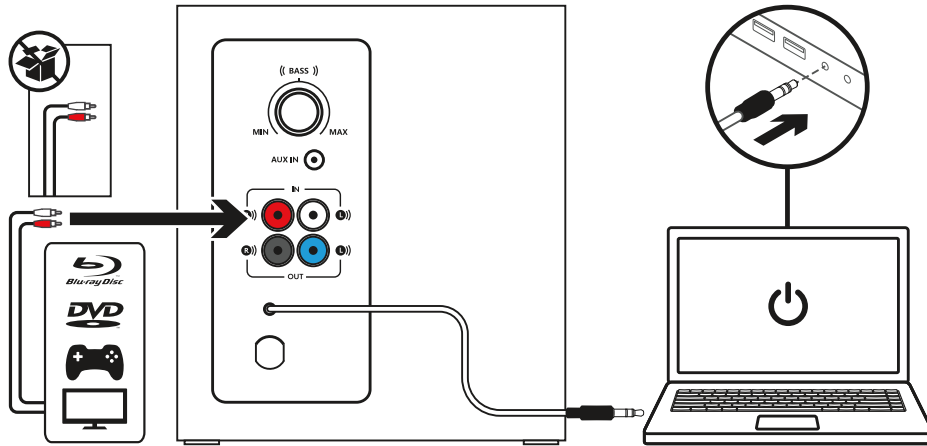
3



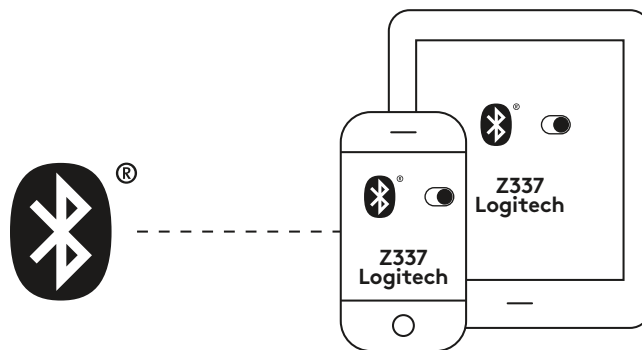
CONECTAR TRÊS DISPOSITIVOS SIMULTANEAMENTE

1. Conecte até três dispositivos ao mesmo tempo através do conector RCA na parte traseira do subwoofer, do cabo de 3,5mm do subwoofer e do *Bluetooth*.
2. Você pode parear até oito dispositivos de origem *Bluetooth* às caixas de som e conectar dois de uma vez.
3. Para alternar entre as fontes de áudio, basta pausar o áudio em um dispositivo conectado e reproduzir o áudio do outro dispositivo conectado.

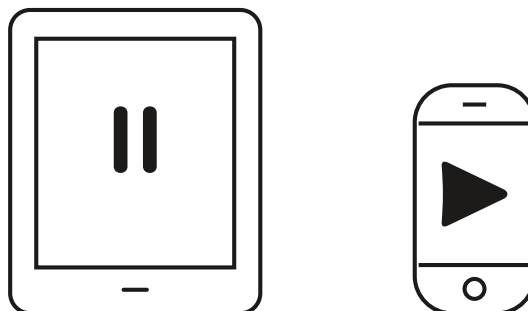
1



2



3



AJUSTAR O VOLUME

1. Ajuste o volume do Z337 com o botão da unidade de controle.

Gire o botão no sentido horário (para a direita) para aumentar o volume.

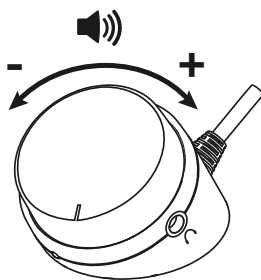
Gire o botão no sentido anti-horário (para a esquerda) para diminuir o volume.

AJUSTAR OS GRAVES

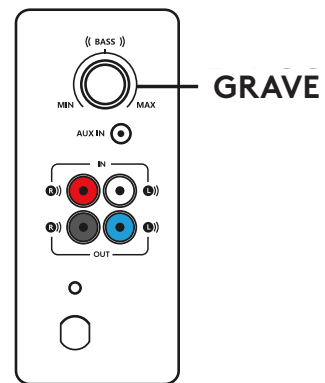
2. Ajuste o nível de graves girando o botão de controle de graves localizado na parte traseira do subwoofer.

Gire o botão de controle de graves para a direita para graves mais profundos ou para a esquerda para menos graves.

1



2



www.logitech.com/support/Z337

www.logitech.com/support/Z337

© 2019 Logitech. Logitech, Logi and other Logitech marks are owned by Logitech and may be registered. All other trademarks are the property of their respective owners. Logitech assumes no responsibility for any errors that may appear in this manual. Information contained herein is subject to change without notice.

WEB-621-001232.003

© 2019 Logitech. Logitech, Logi et les autres marques Logitech sont la propriété de Logitech et sont susceptibles d'être déposées. Toutes les autres marques sont la propriété exclusive de leurs détenteurs respectifs. Logitech décline toute responsabilité en cas d'erreurs susceptibles de s'être glissées dans le présent manuel. Les informations énoncées dans ce document peuvent faire l'objet de modifications sans préavis.

logitech®