



Plantronics Explorer® 200 Series

User Guide

Welcome

Congratulations on purchasing a Plantronics headset. This User Guide contains instructions for setting up and using your Plantronics Explorer® 200 series headset. Please refer to the separate “For Your Safety” booklet for important product safety information prior to installation or use of the product.

Getting Assistance

The Plantronics Technical Assistance Centre is ready to assist you. You can find answers to frequently asked questions, ask a question using e-mail, receive service over the Internet, or speak directly with a representative. Visit www.plantronics.com/support or call your country support line mentioned at the back of this user guide.

Registering Your Product

Visit www.plantronics.com/productregistration to register your product online so we can provide you with the best service and technical support.

Contents

Welcome	ii
What is Bluetooth®?	iv
Package Contents, Features and Accessories	1
Charging Your Headset	2
How to Charge Your Headset Using the AC Charger	2
Pairing Your Headset	3
Plantronics QuickPair™ Technology	3
How to Pair Your Phone With Your Headset for the First Time	4
How to Pair Your Headset if it Has Been Previously Paired With Another Device	5
Adjusting the Fit	6
Headset Controls	7
Range	8
Indicator Lights	9
Hands-Free Features	10
Troubleshooting	11
Product Specifications	12

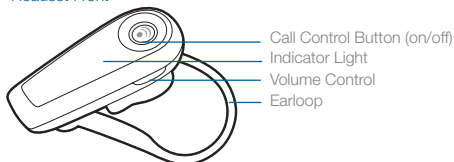
What is Bluetooth®?

Bluetooth wireless technology provides a way for devices to communicate with each other using short-range radio frequency instead of wires. Any two Bluetooth devices can communicate as long as they both have Bluetooth turned on, they are within range and they have been paired — a quick “handshake” process that connects the two devices. Bluetooth range is up to 10 metres (33 feet). Obstructions such as walls or other electronics devices can cause interference or shorten the effective range.

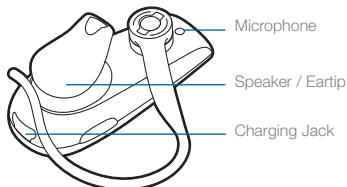
NOTE For optimal performance, place your headset and phone on the same side of your body.

Package Contents and Features

Headset Front



Headset Back



AC Charger
100-240V

Plantronics Explorer® 200 Series Accessories*



Vehicle Charging Adapter
#76777-01



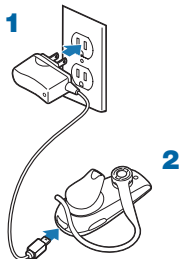
USB Headset Charger
#76016-01



Vehicle Power Charger
#78583-01

* Not included. To order, please contact your Plantronics supplier or go to www.plantronics.com

Charging Your Headset



How to Charge Your Headset Using the AC Charger



Before using your headset for the first time, charge it for at least 20 minutes. A full charge takes approximately two hours.

- 1** Connect the AC charger to a power outlet.
- 2** Plug the AC jack into the charging jack on the headset.

While your headset is charging, the indicator glows red. When your headset is fully charged, the indicator turns off.

⚠ WARNING Do not use your headset while it is connected to the charger.

CHARGING TIME

2 hours	
Full charge	
<hr/>	
20 minutes	
Minimum charge before first use	

Pairing Your Headset

Pairing is the process of introducing your headset to your phone. Before using your headset for the first time, you must pair it with your Bluetooth phone. Normally, you need to pair your headset with your phone only once.

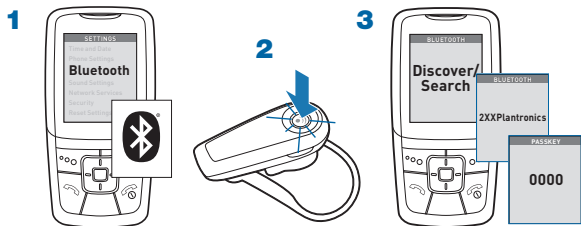
To see a demo of the pairing process, visit www.plantronics.com/EasyToPair (only available in English).

Plantronics QuickPair™ Technology

Your new headset includes Plantronics QuickPair technology to simplify the Bluetooth setup process. The first time you turn your headset on, your headset automatically enters pairing mode for 10 minutes (the indicator light flashes red and blue). Once paired successfully, your headset stays on for instant use.

If not successfully paired after 10 minutes, your headset automatically powers off. When you turn the headset on again, it automatically goes into pairing mode until successfully paired with a Bluetooth phone.

Pairing Your Headset—First Time



How to Pair Your Phone With Your Headset for the First Time

1 Turn on the Bluetooth feature on your phone.

For most phones, select Settings/Tools > Connections > Bluetooth > On. See your phone's user guide for more information.

2 Turn the headset on.

Press and hold the call control button until the indicator light continues to flash red and blue. The headset is now in pairing mode.

If you don't see the red/blue flash, press and hold the call control button to turn your headset off, and then press and hold the call control button again until you see the red/blue flash.

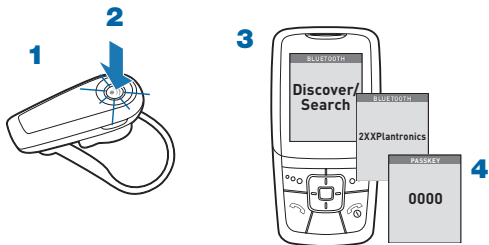
3 Use the commands on your phone to locate your headset.

For most phones, select Settings/Tools > Connections > Bluetooth > Search > 2XXPlantronics. See your phone's user guide for more information.

When prompted for the passkey, enter 0000.

Pairing is successful when the indicator on your headset flashes blue. Your headset is now connected and ready to use.

Pairing Your Headset



How to Pair Your Headset if it Has Been Previously Paired With Another Device

1 Turn the headset off.

Press and hold the call control button until the indicator turns red and then turns off.

2 Turn the headset on.

Press and hold the call control button until the indicator light continues to flash red and blue. The headset is now in pairing mode.

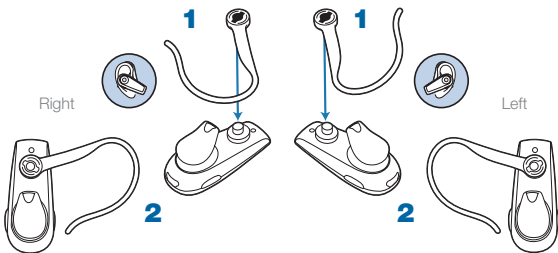
3 Use the commands on your phone to locate your headset.

For most phones, select Settings/Tools > Connections > Bluetooth > Search > 2XXPlantronics. See your phone's user guide for more information.

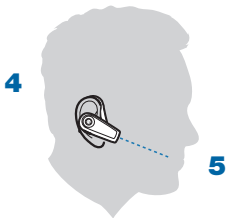
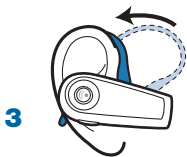
4 When prompted for the passkey, enter 0000.

Pairing is successful when the indicator on your headset flashes blue. Your headset is now connected and ready to use.

Adjusting the Fit



- 1** To remove the earloop, gently pull up on earloop near the Plantronics name until you hear a snap. To replace, gently snap back onto post.
- 2** Position earloop as shown above.
- 3** Place the earloop behind your ear.
- 4** Rotate the headset so that the speaker/eartip rests comfortably in your ear.
- 5** Align the microphone with the corner of your mouth.
Callers can hear you best when you point the microphone towards the corner of your mouth.



Headset Controls

Turn on the headset Press and hold the call control button until the indicator glows blue. You will hear ascending tones.

Turn off the headset Press and hold the call control button until the indicator glows red. You will hear descending tones. When power is off, indicator stays off.

Answer a call Briefly press the call control button.
When you receive a call, your phone may ring before your headset rings. Wait until you hear the ring in your headset before you press the call control button to answer the call.

Reject a call Press the call control button for 2 seconds.

Make a call Enter number on your phone, press send, and the call is automatically transferred to headset; no need to press call control button.

Adjust the volume Briefly press volume button to increase volume. At upper limit you will hear two tones. Press again for lowest volume level. There are five volume levels.

⚠ WARNING Do not use headphones/headsets at high volumes for an extended period of time. Doing so can cause hearing loss. Always listen at moderate levels. See www.plantronics.com/healthandsafety for more information on headsets and hearing.

Headset Controls

Transfer a call from headset to phone

While in a call, press and hold the call control button until you hear a tone.

Transfer a call from phone to headset

While in a call, press and hold the call control button until you hear a tone.

Range

To maintain a connection, keep your headset within 10 metres (33 feet) of the Bluetooth device. If there are obstacles between your headset and the device, you may experience interference. For optimal performance, place your headset and phone on the same side of your body.

Audio quality degrades as you move out of range. When you are far enough away to lose the connection, you hear a high tone in the headset.

NOTE The headset attempts to reconnect after 30 seconds. If you move back in range, you can manually reconnect by pressing the call control button.

NOTE Audio quality is also dependent upon the device with which the headset is paired.

Indicator Lights

Headset Status	Headset Indicator Light
Powering on	Steady blue, then intermittent flashes (changes to standby mode)
Powering off	Red appears and goes off
Standby	Blue intermittent flashes
Charging battery	Red solid light. Light indicator turns off when battery is fully charged and headset is off.
Low battery	Triple red flashes
Pairing mode	Blue/red alternating flashes
Missed call	Purple flashes. Press the call control button to cancel flashing light.
Incoming call	Triple blue flashes when ringing.

Hands-Free Features

If your phone and your wireless service provider both support hands-free operation, you can use the following features:

Redial the last number

To activate last number redial, double press the call control button. You will hear a double tone after each double-button press.

Using Voice Dialling

With the headset on, press the call control button for 2 seconds to activate the voice dialling.

NOTE To use voice-activated dialling, the voice-dialling feature must be enabled on your phone. See your Bluetooth phone manual for instructions.

Reject a call

When receiving an incoming call, press the call control button for 2 seconds to reject the call.

Troubleshooting

My headset does not work with my phone.

Headset was not in pairing mode when mobile phone menu selections were made. See page 5 “Pairing Your Headset.”

Incorrect menu selections were made on your mobile phone. See page 5 “Pairing Your Headset.”

I did not enter my passkey.

Your phone did not locate the headset. Repeat the pairing process on page 5.

Incorrect menu selections were made on your mobile phone. Repeat the pairing process on page 5.

Callers cannot hear me, or I cannot hear caller/dialling tone.

The headset is not turned on or the headset is not connected to mobile phone. Press the call control button for 2 seconds until you hear a beep or see the indicator light glow blue to turn headset on.

Your headset is out of range. Move the headset closer to the phone or Bluetooth device.

Your headset battery is drained. Charge your battery using the AC power adapter supplied.

The listening volume is too low. Press the volume key up (toward the earloop) to increase the sound heard in the headset.

Product Specifications

Talk Time*	Up to 8 hours
Standby Time*	Approximately 9 days or 218 hours
Charge Time	2 hours
Range	Up to Bluetooth standard 10 metres (33 feet)
Power Requirements	5V DC – 180 mA
Battery Type	Lithium ion polymer
Storage/Usage Temperature	50 °F – 104 °F (10 °C – 40 °C)
Version	Bluetooth 2.0
Supports Bluetooth hands-free and headset profiles.	

* Battery enabled. Performance may vary by device.

For safety information, see the separate "For Your Safety" booklet.

For warranty information, see the separate "2 Year Warranty" leaflet or visit www.plantronics.com

en

Plantronics Ltd
Wootton Bassett, UK
Tel: 0800 410014

ar

Middle East Region
تامول عمل لآ نم ديزم ل:
www.plantronics.com

cs

Czech Republic
www.plantronics.com

da

Danmark
Tel: 44 35 05 35

de

Plantronics GmbH
Hürth, Deutschland

Kundenservice:
Deutschland 0800 9323 400
Österreich 0800 242 500
Schweiz 0800 932 340

el

Για περισσότερες
πληροφορίες:
www.plantronics.com

es

Plantronics Iberia, S.L.
Madrid, España
Tel: 902 41 51 91

fi

Finland
Tel: 0800 117095

fr

Plantronics Sarl
Noisy-le-Grand
France

N° Indigo 0 825 0 825 99
0,150 € TTC / MN

ga

Plantronics BV
Regus House
Harcourt Centre
Harcourt Road
Dublin 2
Ireland
Office: +353 (0) 1 477 3919
Service ROI: 1800 551 896

he

רתאב רקב, פסונ עדימל:
www.plantronics.com

hu

További információk:
www.plantronics.com

it

Plantronics Acoustics
Italia Srl
Milano, Italia
Numero Verde: 800 950934

nl

Plantronics B.V.
Hoofddorp, Nederland
Tel: (0)0800 Plantronics
0800 7526876 (NL)
00800 75268766 (BE/LUX)

no

Norge
Tel: 80011336

pl

Aby uzyskać więcej
informacji:
www.plantronics.com

pt

Portugal
Tel: 0800 84 45 17

ro

Pentru informații
www.plantronics.com

ru

Дополнительная
информация:
www.plantronics.com

sv

Sverige
Tel: 031-28 95 00

tr

Daha fazla bilgi için:
www.plantronics.com



Plantronics, Inc.
345 Encinal
Santa Cruz, CA 95060
USA
Tlf.: 800-544-4660
www.plantronics.com

© 2008 Plantronics, Inc. All rights reserved. Plantronics, the logo design, Plantronics Explorer, QuickPair and Sound Innovation are trademarks or registered trademarks of Plantronics, Inc. The Bluetooth word mark and logo are owned by Bluetooth SIG, Inc. and any use of such marks by Plantronics, Inc. is under license. All other trademarks are the property of their respective owners.

U.S. Patents Pending
78563-03 Rev A