

# SAMSUNG LED TV user manual

Figures and illustrations in this User Manual are provided for reference only and may differ from actual product appearance. Product design and specifications may be changed without notice.

- Still image warning**
- Avoid displaying still images (like jpeg picture files) or still image element (like TV programme logo, panorama or 4:3 image format, stock or news bar at screen bottom etc.) on the screen. Constant displaying of still picture can cause ghosting of LED screen, which will affect image quality. To reduce risk of this effect, please follow below recommendations:
  - Avoid displaying the same TV channel for long periods.
  - Always try to display any image on full screen, use TV set picture format menu for best possible match.
  - Reduce brightness and contrast values to minimum required to achieve desired picture quality, exceeded values may speed up the burnout process.
  - Frequently use all TV features designed to reduce image retention and screen burnout, refer to proper user manual section for details.

**For India Only**  
This product is RoHS compliant.

**Correct Disposal of This Product**  
(Waste Electrical & Electronic Equipment)  
This marking on the product & accessories literature indicates that the product and its electronic accessories (e.g. charger, headset, USB cable) should not be disposed of with other household waste at the end of their working life. To prevent possible harm to the environment or human health from uncontrolled waste disposal, please separate these items from other types of waste and recycle them responsibly to promote the sustainable reuse of material resources. House hold users should contact either the retailer where they purchased this product, or their local government office, for details of where and how they can take these items for environmentally safe recycling. Business user should contact their supplier and check the terms and conditions of the purchase contract. This product and its electronic accessories should not be mixed with other commercial wastes for disposal.

For more information on safe disposal and recycling visit our website [www.samsung.com/in/](http://www.samsung.com/in/) or contact our helpline number - 18002668282, 180030008282

For personal and non-commercial use only. Usage is subject to following the guidelines in the User Manual and may not be available in all regions.



Country	Customer Care Centre	Web Site
VIETNAM	1800 588 889 0-2689-3232	<a href="http://www.samsung.com/vn/support">www.samsung.com/vn/support</a>
THAILAND	1800-28-3232	<a href="http://www.samsung.com/th/support">www.samsung.com/th/support</a>
MYANMAR	01-2399888	<a href="http://www.samsung.com/my/support">www.samsung.com/my/support</a>
MALAYSIA	1800-88-9999 800-77137477 (Overseas contact)	<a href="http://www.samsung.com/my/support">www.samsung.com/my/support</a>
PHILIPPINES	1-800-10-7267864 (PLDT) 1-800-8-7267864 (Globe landline and Mobile) 02-4222111 (Other landline)	<a href="http://www.samsung.com/ph/support">www.samsung.com/ph/support</a>
INDIA	1800 3000 8282 - Toll Free 1800 266 8282 - Toll Free	<a href="http://www.samsung.com/in/support">www.samsung.com/in/support</a>
BANGLADESH	9612300300 0084117540540 0084115900000	<a href="http://www.samsung.com/in/support">www.samsung.com/in/support</a>
EGYPT	08000-726786	<a href="http://www.samsung.com/eg/support">www.samsung.com/eg/support</a>
ALGERIA	021 36 11 00	<a href="http://www.samsung.com/in_algeria/support">www.samsung.com/in_algeria/support</a>
IRAN	021-8255	<a href="http://www.samsung.com/iran/support">www.samsung.com/iran/support</a>
SAUDI ARABIA	920021230	<a href="http://www.samsung.com/sa_en/support">www.samsung.com/sa_en/support</a>
PAKISTAN	0800-Samsung (72678)	<a href="http://www.samsung.com/pk/support">www.samsung.com/pk/support</a>
TUNISIA	80-1000-12	<a href="http://www.samsung.com/in_tunisia/support">www.samsung.com/in_tunisia/support</a>
U.A.E	800-SAMSUNG (800 - 726 7864)	<a href="http://www.samsung.com/ae_ar/support">www.samsung.com/ae_ar/support</a>
OMAN	800-SAMSUNG (800 - 726 7864)	<a href="http://www.samsung.com/ae_ar/support">www.samsung.com/ae_ar/support</a>
KUWAIT	183-CALL (183-2255)	<a href="http://www.samsung.com/ae_ar/support">www.samsung.com/ae_ar/support</a>
BAHRAIN	8000-GSAM (8000-4726)	<a href="http://www.samsung.com/ae_ar/support">www.samsung.com/ae_ar/support</a>
QATAR	800-CALL (800-2255)	<a href="http://www.samsung.com/ae_ar/support">www.samsung.com/ae_ar/support</a>
JORDAN	0800-22273	<a href="http://www.samsung.com/Levant/support">www.samsung.com/Levant/support</a>
SYRIA	06 577444 18252773	<a href="http://www.samsung.com/Levant/support">www.samsung.com/Levant/support</a>
MOROCCO	080 100 22 55	<a href="http://www.samsung.com/in_algeria/support">www.samsung.com/in_algeria/support</a>
SOUTH AFRICA	0800 SAMSUNG (726 7864)	<a href="http://www.samsung.com/support">www.samsung.com/support</a>
BOTSWANA	8007260000	<a href="http://www.samsung.com/support">www.samsung.com/support</a>
NAMIBIA	08 197 267 864	<a href="http://www.samsung.com/support">www.samsung.com/support</a>
ZAMBIA	0211 350370	<a href="http://www.samsung.com/support">www.samsung.com/support</a>
MOZAMBIQUE	847267864 / 827267864	<a href="http://www.samsung.com/support">www.samsung.com/support</a>
NIGERIA	0800-726-7864	<a href="http://www.samsung.com/afrika_en/support">www.samsung.com/afrika_en/support</a>
Ghana	0800-10077 0302-200077	<a href="http://www.samsung.com/afrika_en/support">www.samsung.com/afrika_en/support</a>
Cote D'Ivoire	8000 0077	<a href="http://www.samsung.com/afrika_fr/support">www.samsung.com/afrika_fr/support</a>
SENEGAL	800-00-0077	<a href="http://www.samsung.com/afrika_fr/support">www.samsung.com/afrika_fr/support</a>
CAMEROON	7095-0077	<a href="http://www.samsung.com/afrika_fr/support">www.samsung.com/afrika_fr/support</a>
KENYA	0800 545 545	<a href="http://www.samsung.com/support">www.samsung.com/support</a>
UGANDA	0800 300 300	<a href="http://www.samsung.com/support">www.samsung.com/support</a>
TANZANIA	0800 755 755	<a href="http://www.samsung.com/support">www.samsung.com/support</a>
RWANDA	9999	<a href="http://www.samsung.com/support">www.samsung.com/support</a>
BURUNDI	200	<a href="http://www.samsung.com/support">www.samsung.com/support</a>
DRC	499999	<a href="http://www.samsung.com/support">www.samsung.com/support</a>
SUDAN	1369	<a href="http://www.samsung.com/support">www.samsung.com/support</a>

## Important Safety Instructions

### Warning! Important Safety Instructions

(Please read the safety instructions below before installing and using the product.)

**CAUTION**  
RISK OF ELECTRIC SHOCK DO NOT OPEN

This symbol indicates that high voltage is present inside. It is dangerous to make any kind of contact with any internal part of this product.

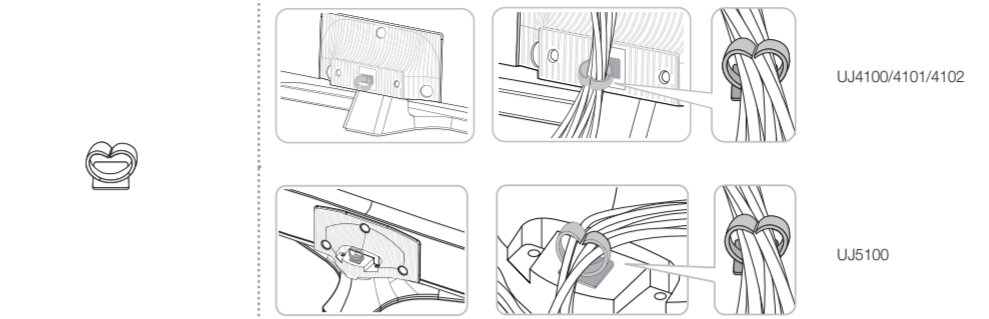
This symbol alerts you that important literature concerning operation and maintenance has been included with this product.

- The slots and openings in the cabinet and in the back or bottom are provided for necessary ventilation. To ensure reliable operation of this apparatus, and to protect it from overheating, these slots and openings must never be blocked or covered.
  - Do not cover the slots and openings with a cloth or other materials.
  - Do not block the slots and openings by placing this apparatus on a bed, sofa, rug or other similar surface.
- Do not place this apparatus in a confined space, such as a bookcase or built-in cabinet, unless proper ventilation is provided.
- Do not place this apparatus near or over a radiator or heat register, or where it is exposed to direct sunlight.
- Do not place a vessel containing water (vases etc.) on this apparatus, as this can result in a risk of fire or electric shock.
- Do not expose this apparatus to rain or place it near water (near a bathtub, washbowl, kitchen sink, or laundry tub, in a wet basement, or near a swimming pool etc.). If this apparatus accidentally gets wet, unplug it and contact an authorised dealer immediately.
- Make sure to pull out the power cord from the outlet before cleaning.
- This apparatus uses batteries. In your community, there might be regulations that require you to dispose of these batteries properly to protect the environment. Please contact your local authorities for disposal or recycling information.
- Do not overload wall outlets, extension cords, or adaptors beyond their capacity, as this can result in fire or electric shock.
- Power-supply cords should be routed so that they are not likely to be walked on or pinched by items placed upon or against them. Pay particular attention to cords at the plug end, where connected to adaptors, and at the point where they exit from the apparatus.
- To protect this apparatus from a lightning storm, or when it is left unattended and unused for long periods of time, unplug it from the wall outlet and disconnect the antenna or cable system. This will prevent damage to the set due to lightning and power line surges.
- Before connecting the AC power cord to the DC adaptor outlet, make sure the voltage designation of the DC adaptor corresponds to the local electrical supply, (depending on the model).
- Never insert anything metallic into the open parts of this apparatus. Doing so may create a danger of electric shock.
- To avoid electric shock, never touch the inside of this apparatus. Only a qualified technician should open this apparatus.
- Make sure to plug the power cord in until it is firmly inserted. Pull on the plug, not the cord, when removing the power cord from the outlet. Do not touch the power cord with wet hands.
- If this apparatus does not operate normally - in particular, if there are any unusual sounds or smells coming from it - unplug it immediately and contact an authorised dealer or service centre.
- Be sure to pull the power plug out of the outlet if the TV is to remain unused or if you are to leave the house for an extended period of time (especially when children, elderly or disabled people will be left alone in the house).
  - Accumulated dust can cause an electric shock, an electric leakage, or a fire by causing the power cord to generate sparks and heat, or cause the insulation to deteriorate.
- Be sure to contact an authorised service centre, when installing your set in a location with heavy dust, high or low temperatures, high humidity, chemical substances or where it will operate for 24 hours a day such as in an airport, a train station, etc. Failure to do so may cause serious damage to your set.
- Use only a properly grounded plug and receptacle.
  - An improper ground may cause electric shock or equipment damage. (Class I Equipment only.)
- To turn off the apparatus completely, you must pull the power plug out of the wall socket. Consequently, the power plug should be readily accessible at all times.
- Do not allow children to hang onto the product.
- Store the accessories (batteries, etc.) in a location safely out of the reach of children.
- Do not install the product in an unstable location such as a shaky shelf, a slanted floor, or a location exposed to vibration.
- Do not drop or impart a shock to the product. If the product is damaged, disconnect the power cord and contact a service centre.
- To clean the product, unplug the power cord from the power outlet and wipe the product using a soft, dry cloth. Do not use any chemicals such as wax, benzene, alcohol, thinners, insecticide, air freshener, lubricant or detergent. This may damage the appearance or erase the printing on the product.
- Do not expose the apparatus to dripping or splashing.
- Do not dispose of batteries in a fire.
- Do not short circuit, disassemble, or overheat the batteries.
- There is a danger of explosion if you replace the batteries with the wrong type of battery. Replace only with the same or equivalent type.
- WARNING - TO PREVENT THE SPREAD OF FIRE, KEEP CANDLES OR OTHER OPEN FLAMES AWAY FROM THIS PRODUCT AT ALL TIMES.**

## Getting Started

### Accessories

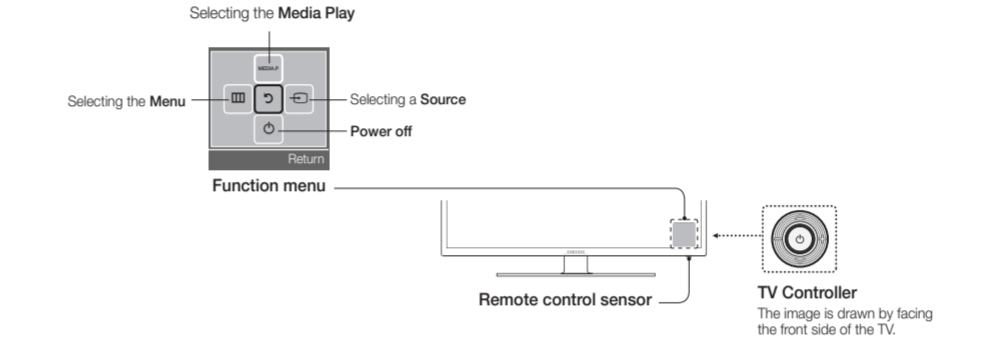
- Remote Control & Batteries (AAA x 2)
- Owner's Instructions
- Warranty Card / Regulatory Guide (Not available in some locations)
- Power Cord
- Only for UJ4100/4101/4102:
  - Bracket-Wall
  - Wall-Mount Kit
  - Spacer-Felt
  - Wall-Mount Quick setup guide
  - Screw Setting Guide



### Input Cables (Sold Separately)

- Composite (AV)
- Coaxial (RF)
- HDMI-DVI
- Component
- HDMI

### TV Controller (Panel Key)



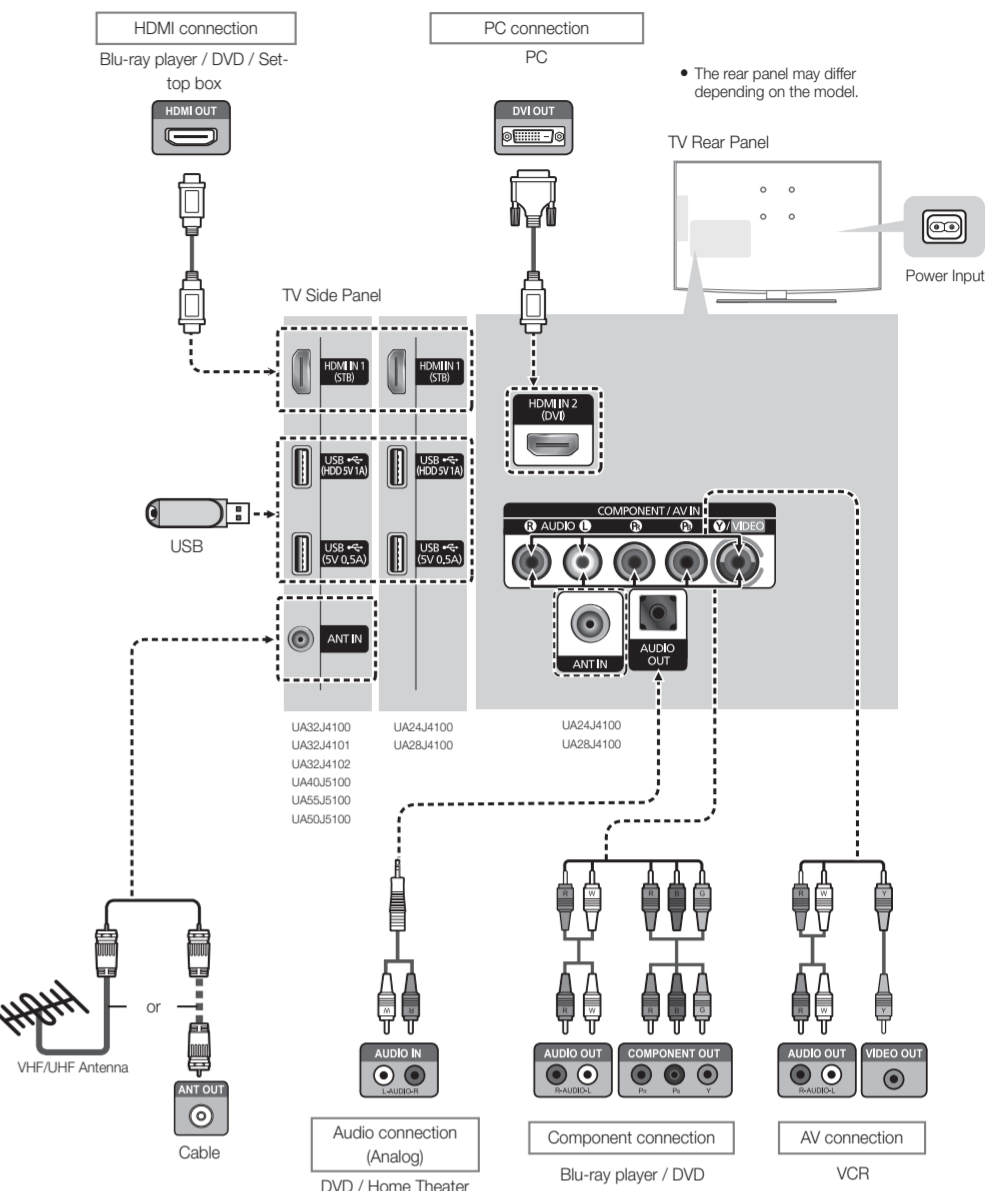
- To close the **Menu**, **Media Play** List, or **Source** List, press the Controller for more than 1 second.
- When selecting the function by moving the controller to the up/down/left/right directions, be sure not to press the controller. If you press it first, you cannot operate it to move the up/down/left/right directions.

### Plug & Play (Initial Setup)

- When you turn the TV on for the first time, a sequence of screens and on-screen prompts will assist you in configuring the TV's basic settings. Plug the power cord into a wall outlet, and then press the **POWER** button to turn on the TV. Set the initial setup following instructions that the TV guides.
- If you are not using a cable box or satellite box, make you have connected the TV to an Aerial or cable connection before you turn on the TV.
- Connecting the power cord and antenna, (refer to 'Connections')

## Connections

- For better picture and audio quality, connect to a digital device using an HDMI cable.
- The picture may not display normally (if at all) or the audio may not work if an external device that uses an older version of HDMI mode is connected to the TV. If such a problem occurs, ask the manufacturer of the external device about the HDMI version and, if not of date, request an upgrade.
- Be sure to purchase a certified HDMI cable. Otherwise, the picture may not display or a connection error may occur.
- PC / DVI **AUDIO IN** input is not supported.
- For HDMI/DVI cable connection, you must use the HDMI IN 2 (DVI) port.
- Connecting through the HDMI cable may not be supported depending on the PC.
- If an HDMI to DVI cable is connected to the HDMI IN 2 (DVI) port, the audio does not work.
- For Set-top box connection using HDMI cable, we highly recommend you to connect the HDMI IN 1 (STB) port.



## Changing the Input Source

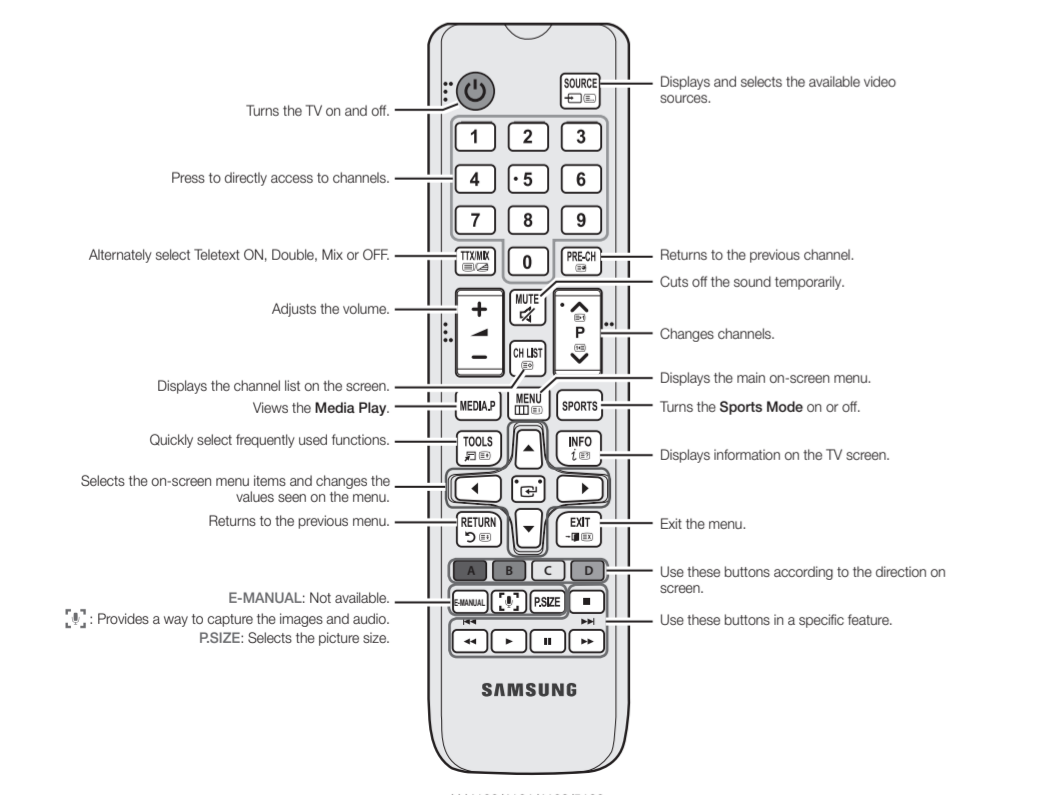
- Source List**
- Use to select TV or other external input sources such as DVD / Blu-ray players / cable box / STB satellite receiver connected to the TV.
- Press the **SOURCE** button.
  - Select a desired external input source.
- **TV / AV / Component / HDMI1 / HDMI2/DVI**
- You can only choose external devices that are connected to the TV. In the **Source List**, connected inputs will be highlighted.

## How to use Edit Name

- Edit Name** lets you associate a device name to an input source. To access **Edit Name**, enter **Support** menu and select **Edit Name**. Name the device connected to the input jacks to make your input source selection easier.
- When connecting a PC to the HDMI IN 2 (DVI) port with HDMI cable, you should set the TV to PC mode under **Edit Name**.
  - When connecting a PC to the HDMI IN 2 (DVI) port with HDMI to DVI cable, you should set the TV to DVI PC mode under **Edit Name**.
  - When connecting an AV devices to the HDMI IN 2 (DVI) port with HDMI to DVI cable, you should set the TV to DVI mode under **Edit Name**.

## Remote Control

This remote control has Braille points on the Power, Channel, and Volume buttons and can be used by visually impaired persons.

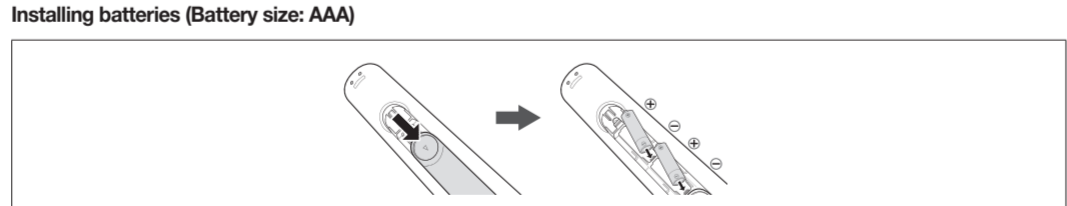


UJ4100/4101/4102/5100

## Display Modes (HDMI/DVI Input)

Optimal resolution  
4 series: 1366 x 768@60Hz, 1600 x 900@60Hz / 5 series: 1920 x 1080@60Hz

Mode	Resolution	Horizontal Frequency (kHz)	Vertical Frequency (Hz)	Pixel Clock Frequency (MHz)	Sync Polarity (H / V)	1366 x 768	1920 x 1080
IBM	720 x 480	31.469	70.087	28.322	-/+	✓	✓
	640 x 480	35.000	60.667	30.240	-/-	✓	✓
MAC	852 x 624	49.726	74.581	57.284	-/-	✓	✓
	1152 x 870	68.681	75.062	100.000	-/-	✓	✓
640 x 480	31.469	59.940	25.175	-/-	✓	✓	
	37.861	72.809	31.500	-/-	✓	✓	
640 x 480	37.500	75.000	31.500	-/-	✓	✓	
	37.879	60.317	40.000	+/-	✓	✓	
800 x 600	48.077	72.188	50.000	-/-	✓	✓	
	48.875	75.000	49.500	+/-	✓	✓	
1024 x 768	48.363	60.004	65.000	-/-	✓	✓	
	56.476	70.099	75.000	-/-	✓	✓	
1024 x 768	60.023	75.029	76.750	+/-	✓	✓	
	67.500	75.000	108.000	+/-	✓	✓	
1280 x 720	45.000	60.000	74.250	+/-	✓	✓	
	49.702	59.810	85.500	-/-	✓	✓	
1280 x 1024	63.981	60.020	108.000	+/-	✓	✓	
	79.876	75.025	135.000	-/-	✓	✓	
1366 x 768	47.712	59.790	85.500	-/-	✓	✓	
	55.805	59.887	108.000	-/-	✓	✓	
1600 x 900@B	60.000	60.000	108.000	+/-	✓	✓	
	65.200	59.984	148.250	-/-	✓	✓	
1920 x 1080	67.500	60.000	148.500	+/-	✓	✓	



- NOTE**
- Use the remote control within 7 m from TV.
  - Bright light may affect the performance of the remote control. Avoid using nearby special fluorescent light or neon signs.
  - The Colour and shape may vary depending on the model.

## Channel Menu

- Seeing Channels**
- Channel List**
- Select a channel in the **All Channels**, **Added Channels** screen by pressing the **▲** buttons, and pressing the **ENTER** / **LF** button. Then you can watch the selected channel.
- Use the remote control buttons with the **Channel List**
- Channel Status Display icons**

Icons	Operations
	A channel deleted.

## Retuning Channels

- Area**
- You can change the desired area.

- Auto Store**
- (Depending on the country)
- Scan mode for Southwest Asia: Full/Turbo
- Scans for a channel automatically and stores in the TV.

- Manual Store**
- Scans for a channel manually and stores in the TV.
- According to channel source, **Manual Store** may be supported.
- Programme**, **Colour System**, **Sound System**, **Channel Search**, **Store**: If there is abnormal sound or no sound, reset the sound standard required.

- Channel List Option Menu**
- Set each channel using the **Channel List** menu options (**Add / Delete**). Option menu items may differ depending on the channel status.
- Set each channel using the **Channel List** menu options. Option menu items may differ depending on the channel status.
- Add / Delete**: Delete or add a channel to display the channels you want.
- All deleted channels will be shown on the **All Channels** menu.
- A "X" beside the channel indicates the channel has been deleted.
- The **Add** menu only appears for deleted channels.

## Fine Tune

- If the reception is clear, you do not have to fine tune the channel, as this is done automatically during the search and store operation. If the signal is weak or distorted, fine tune the channel manually.
- Fine tuned channels that have been saved are marked with an asterisk "\*" on the right-hand side of the channel number in the channel banner.
- This is available for analogue broadcasts only.
- NOTE**
- Depending on the input source, the picture size options may vary.
- The available items may differ depending on the selected mode.
- Settings can be adjusted and stored for each external device connected to an input on the TV.
- Digital Clean View (Auto / Off / Low / Medium / High)** If the broadcast signal received by your TV is weak, you can activate the **Digital Clean View** feature to reduce any static and ghosting that may appear on the screen.
- When the signal is weak, try other options until the best picture is displayed.
- HDMI Black Level**: Selects the black level on the screen to adjust the screen depth.
- Available only in **HDMI** mode (RGB signals).
- Film Mode (Auto / Off)**: Sets the TV to automatically sense and process film signals from all sources and adjust the picture for optimum quality.
- Available in TV mode, **AV**, **COMPONENT** (480i / 1080i) and **HDMI** (480i / 1080i).
- Motion Lighting**: Reduce power consumption by brightness control adapted motion.
- Only available in **Standard** mode.
- Analogue Clean View**: Reduces diagonal noise in picture caused by the crossstalk of signals.

## Picture Reset

Resets your current picture mode to its default settings.

## Picture Menu

- Picture Mode** **TOOLS** **P**
- Select your preferred picture type.
- Dynamic**: Suitable for a bright room.
- Standard**: Suitable for a normal environment.
- Movie**: Suitable for watching movies in a dark room.
- Backlight / Contrast / Brightness / Sharpness / Colour / Tint (G/R)**
- Your television has several setting options for picture quality control.
- In analogue **TV**, **AV** modes of the PAL system, the **Tint (G/R)** function is not available.
- When connecting a PC, you can only make changes to **Backlight**, **Contrast**, **Brightness** and **Sharpness**.
- Settings can be adjusted and stored for each external device connected to the TV.
- Lowering picture brightness reduces power consumption.

## Picture Options

- Colour Tone**: Select the colour temperature.
- Warm** will be deactivated when the picture mode is **Dynamic**.
- Size**: Your cable box/satellite receiver may have its own set of screen sizes as well. However, we highly recommend you use **16:9** mode most of the time.
- 16:9**: Sets the picture to 16:9 wide mode.
- 4:3**: Sets the picture to basic 4:3 mode.
- Zoom1/Zoom2**: Zoom out 16:9 wide mode vertically to fit the screen size.
- Screen Fit**: Displays the full image without any cut-off when HDMI(720p/1080i/1080p) signals are inputted.
- Custom**: Magnifies or shrinks 16:9 pictures vertically and/or horizontally. A magnified or shrunk picture can be moved left, right, up, and down.
- Do not watch in 4:3 format for a long time. Traces of borders displayed on the left, right and centre of the screen may cause image retention (screen burn) which are not covered by the warranty.

- NOTE**
- Depending on the input source, the picture size options may vary.
- The available items may differ depending on the selected mode.
- Settings can be adjusted and stored for each external device connected to an input on the TV.
- Digital Clean View (Auto / Off / Low / Medium / High)** If the broadcast signal received by your TV is weak, you can activate the **Digital Clean View** feature to reduce any static and ghosting that may appear on the screen.
- When the signal is weak, try other options until the best picture is displayed.
- HDMI Black Level**: Selects the black level on the screen to adjust the screen depth.
- Available only in **HDMI** mode (RGB signals).
- Film Mode (Auto / Off)**: Sets the TV to automatically sense and process film signals from all sources and adjust the picture for optimum quality.
- Available in TV mode, **AV**, **COMPONENT** (480i / 1080i) and **HDMI** (480i / 1080i).
- Motion Lighting**: Reduce power consumption by brightness control adapted motion.
- Only available in **Standard** mode.
- Analogue Clean View**: Reduces diagonal noise in picture caused by the crossstalk of signals.

## Picture Reset

Resets your current picture mode to its default settings.

## Sound Menu

- Sound Mode** **TOOLS** **S**
- Standard**: Selects the normal sound mode.
- MUSIC**: Emphasises music over voices.
- Movie**: Provides the best sound for movies.
- Clear Voice**: Emphasises voices over other sounds.
- Equalizer**
- (standard sound mode only)
- Balance**: Adjusts the balance between the right and left speaker.
- 100Hz / 300Hz / 1kHz / 3kHz / 10kHz (Bandwidth Adjustment)**: Adjusts the level of specific bandwidth frequencies.
- Reset**: Resets the **Equalizer** to its default settings.
- DTS TruSurround HD** **TOOLS** **P**
- (standard sound mode only)
- This function provides a virtual 5.1 channel surround sound experience through a pair of speakers using HRTF (Head Related Transfer Function) technology.

## Auto Volume

- Because each broadcasting station has its own signal conditions, the volume may fluctuate each time channel is changed. This feature lets you automatically adjust the volume of the desired channel by lowering the sound output when the modulation signal is high or by raising the sound output when the modulation signal is low.

## Speaker Select

