



Figures and illustrations in this User Manual are provided for reference only and may differ from actual product appearance.

Important Warranty Information Regarding Television Format Viewing

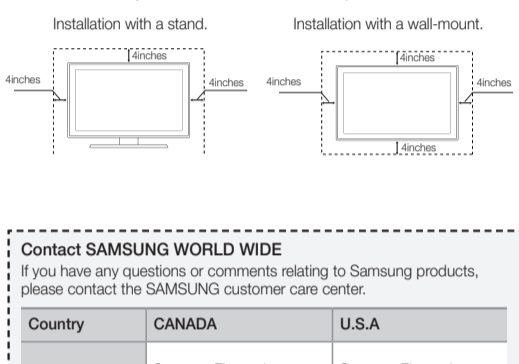
Wide screen format LED Displays with aspect ratios of 16:9... Figures and illustrations in this User Manual are provided for reference only and may differ from actual product appearance.

Still image warning

Avoid displaying still images (such as jpeg picture files) or still image elements (such as TV channel logos, panorama or 4:3 image format, stock or news bars at screen bottom etc) on the screen.

Securing the Installation Space

Keep the required distances between the product and other objects (e.g. walls) to ensure proper ventilation. Failing to do so may result in fire or a problem with the product due to an increase in the internal temperature of the product.



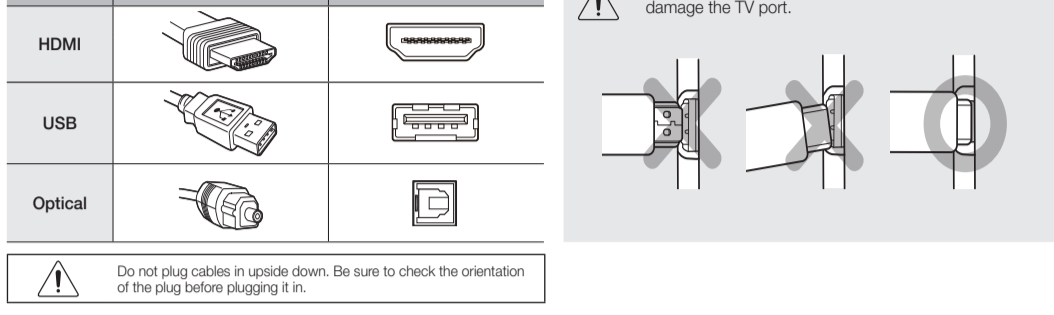
Contact SAMSUNG WORLD WIDE table with columns for Country, Address, Customer Care Center, and Web Site for CANADA and U.S.A.

Samsung Warning! Important Safety Instructions. Please read the safety instructions below before installing and using the product. CAUTION RISK OF ELECTRIC SHOCK. DO NOT OPEN.

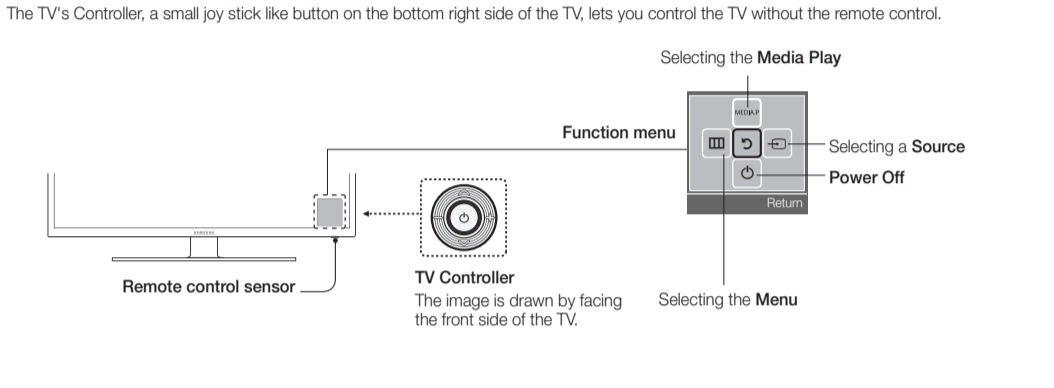
The slots and openings in the cabinet and in the back or bottom are provided for necessary ventilation. To ensure reliable operation of this apparatus, and to protect it from overheating, these slots and openings must never be blocked or covered.

Warning! This symbol indicates that high voltage is present inside. It is dangerous to make any kind of contact with any internal part of this product. Do not touch the power cord in wet hands.

Getting Started Accessories. Remote Control & Batteries (AAA x2), Warranty Card / Regulatory Guide, Owner's Instructions, Power Cord, Cable Holder, Component, Coaxial (FF), HDMI, HDMI-DVI.



TV Controller (Panel Key)



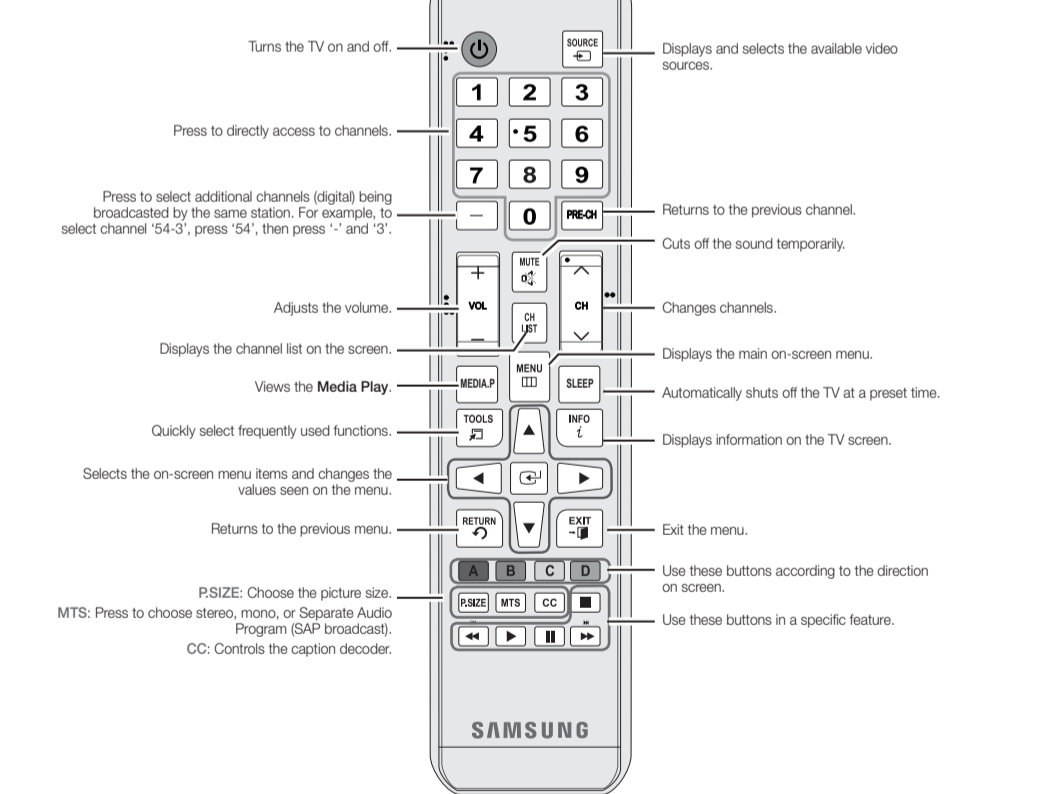
Exits the menu when pressing the controller more than 1 second. When selecting the function by moving the controller to the up/down/left/right directions, be sure not to press the controller.

Plug & Play (Initial Setup)

When you turn the TV on for the first time, a sequence of screens and on-screen prompts will assist you in configuring the TV's basic settings.

Remote Control

This remote control has Braille points on the Power, Channel, and Volume buttons and can be used by visually impaired persons.



Display Modes (HDMI/DVI Input) table listing Mode, Resolution, Horizontal Frequency (kHz), Vertical Frequency (Hz), Pixel Clock Frequency (MHz), and Sync Polarity (P/N).

Channel Menu

Seeing Channels Channel List. Add, delete or set Favorite channels and use the program guide for digital broadcasts. Select a channel in the All Channels, Added Channels, Favorite or Programmed screen by pressing the ▲ / ▼ buttons.

Channel Status Display Icons. A checkmark indicates a channel selected, a heart indicates a channel set as a Favorite, a TV icon indicates a reserved program, and a person icon indicates a program currently being broadcast.

Antenna (Switch to Cable / Switch to Air). Before your television can begin memorizing the available channels, you must specify the type of signal source that is connected to the TV.

Auto Program. When selecting the Cable TV system, the TV will automatically scan for channels. Press the ENTER button to stop the channel store during Auto Program.

How to Stop Auto Programming. 1. Press the ENTER button. 2. A message will ask Stop Auto Program? Select Yes by pressing the Y button. 3. Press the ENTER button.

Other Features Clear Scrambled Channel. This function filters out scrambled channels after Auto Program is completed. This process may take up to 20-30 minutes.

Fine Tune. This function is only available in Cable mode. When the signal is weak or distorted, fine tune the channel manually.

Picture Menu

Mode. Select your preferred picture type. When connecting a PC, you can only select Entertain and Standard. Dynamic: Suitable for a bright room. Standard: Suitable for a normal environment. Movie: Suitable for watching movies in a dark room.

Picture Options. When connecting a PC, you can only make changes to the Color Tone, Size, and HDMI Black Level. Color Tone: Cool makes the picture bluer (cooler), Warm 1 and Warm 2 make the picture redder (warmer).

Picture Size. Your cable box/satellite receiver may have its own set of screen sizes as well. However, we highly recommend you use 16:9 mode most of the time.

Screen Fit. (DTV) Displays the full image without any cut-off when HDMI (720p / 1080i / 1080p) or Component (1080i / 1080p) signals are inputted.

HDMI Black Level. Sets the black level on the screen to adjust the screen depth. Available only in HDMI mode (RGB signals).

Digital Clean View. If the broadcast signal received by your TV is weak, you can activate the Digital Clean View feature to reduce any static and ghosting that may appear on the screen.

Motion Lighting. Reduces power consumption by brightness control adapted motion. Available in Standard mode only.

Sound Menu

Mode. Selects the normal sound mode. Music: Emphasizes music over voices. Movie: Provides the best sound for movies. Clear Voice: Emphasizes voices over other sounds. Equalizer: Adjusts the level of specific bandwidth frequencies.

DTS TruSurround. DTS TruSurround is a patented DTS technology that solves the problem of playing 5.1 multichannel content over two speakers.

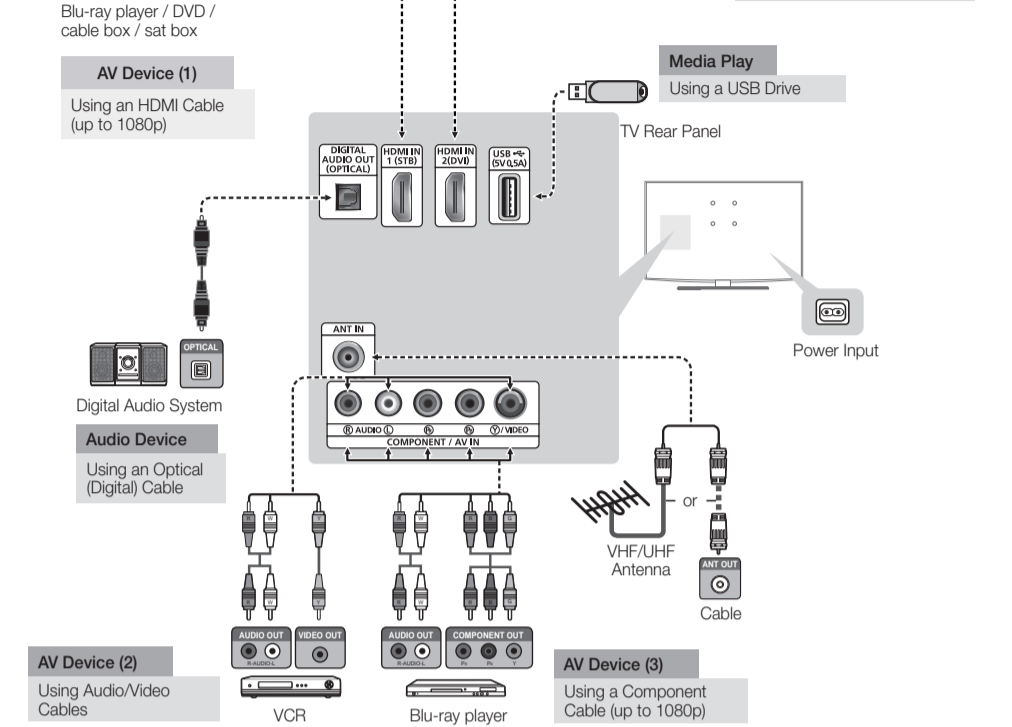
Preferred Language. You can only select a language from among the ones being broadcasted. Multi-Track Sound: (analog channels only) Mono: Choose for channels that are broadcasting in mono or if you are having difficulty receiving a stereo signal.

Audio Volume. Automatically adjusts the volume level when you change video sources or content so the level remains the same. SPDIF Output: The SPDIF (Sony Philips Digital Interface) outputs an uncompressed digital audio signal when you connect the digital audio jack on the back of the TV to a digital audio jack on a receiver or home theater.

Auto Volume. Automatically adjusts the volume level when you change video sources or content so the level remains the same.

Audio Delay. Lets you correct timing mismatches between the audio track and the video when you are watching the TV and listening to digital audio output from the TV through an external device such as an AV receiver.

Connections. For the best picture and audio quality, connect digital devices using an HDMI cable. If you connect an external device to the TV that uses an older version of HDMI, the video and audio may not work.



Changing the Input Source

Source List. Use to select TV or an external input source such as a DVD player / Blu-ray player / cable box / STB satellite receiver. Press the SOURCE button. Select a desired external input source.

How to use Edit i Name. Edit Name lets you associate a device name to an input source. To access Edit Name, press the TOOLS button in Source List. Name the device connected to the input jacks to make your input source selection easier.

Speaker Select. A sound echo may occur due to a difference in decoding speed between the main speaker and the audio receiver. In this case, set the TV to External Speaker.

Visual Impaired. (digital channels only) Adds verbal description to the main audio to help the visually impaired. Dolby Digital Comp: Set Dolby Digital compression mode.

Sound Reset. Reset All: Resets all sound settings to the factory defaults. Setup Menu: Set the menu language.

Language. Set the menu language. Choose between English, Español, and Français. Setting the Time: The current time will appear every time you press the INFO button.

Program Rating Lock. The Program Rating Lock feature automatically locks out programs that are deemed inappropriate for children. The user must enter a PIN (personal identification number) before any of the Program Rating Lock restrictions are set up or changed.

Program Rating Lock. The Program Rating Lock feature automatically locks out programs that are deemed inappropriate for children. The user must enter a PIN (personal identification number) before any of the Program Rating Lock restrictions are set up or changed.

Parental Guidelines. You can block TV programs depending on their rating. The rating information allows you to control what your children are watching.

Canadian Rating. You can block movies depending on their MPAA rating. The Motion Picture Association of America (MPAA) has implemented a rating system that provides parents or guardians with advanced information on which films are appropriate for children.

Change PIN. The Change PIN screen will appear. Choose any 4 digits for your PIN and enter it in Enter New PIN. Re-enter the same 4 digits in Confirm New PIN. When the Change PIN screen disappears, press the OK button. The TV has memorized your new PIN.

Volume. Set the desired volume level. On Time / Off Time: Set the hour, minute, a.m./p.m. and Activate / Inactivate. (To activate the timer with the setting you have chosen, set to Activate).

