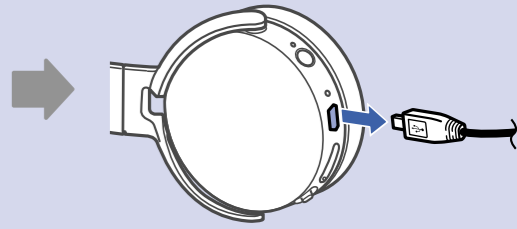
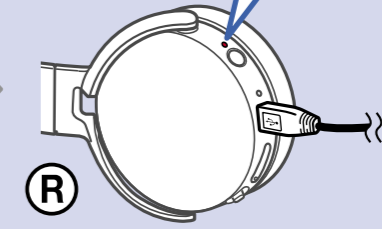
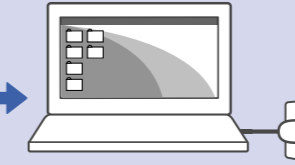
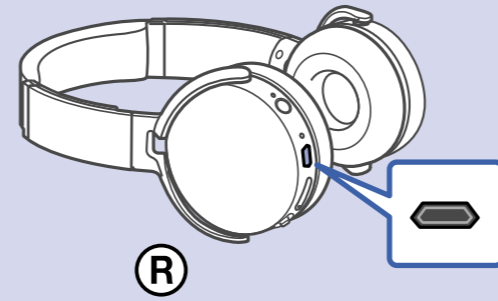
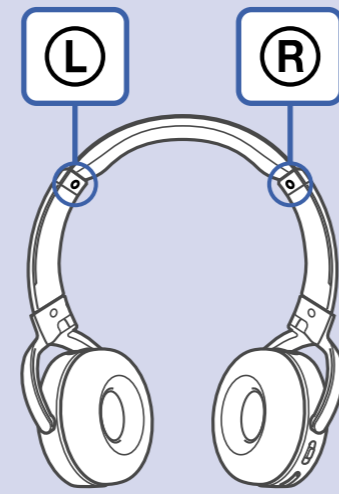


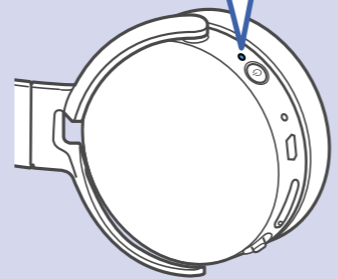
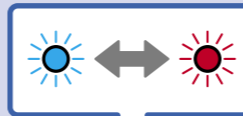
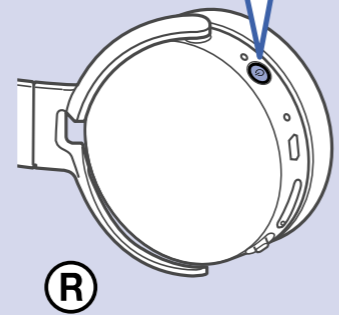
1



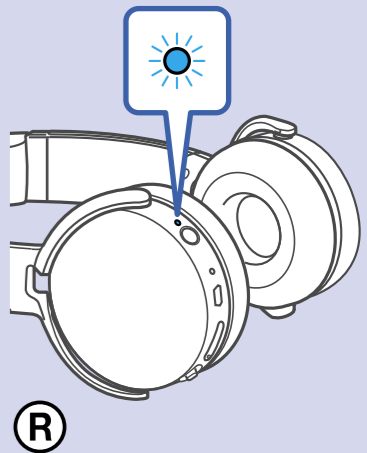
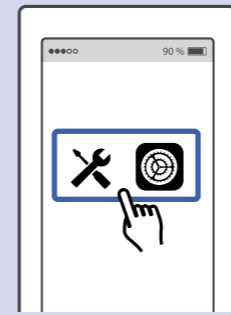
2



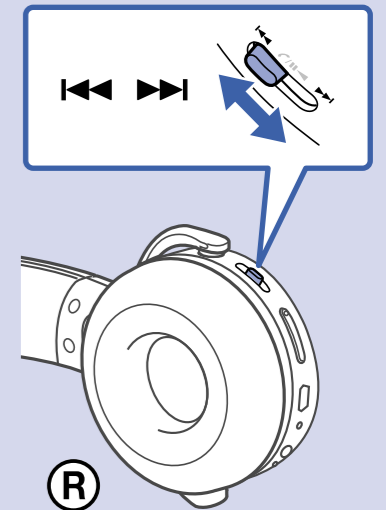
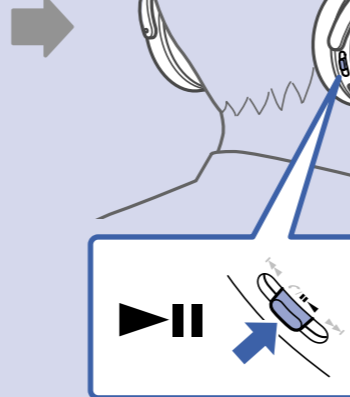
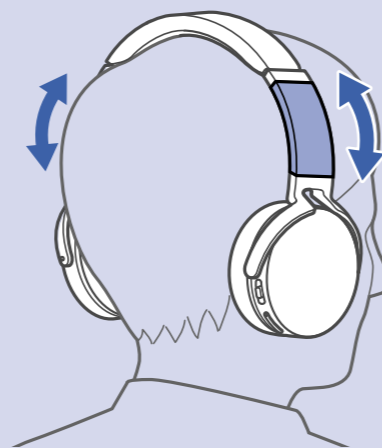
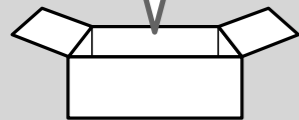
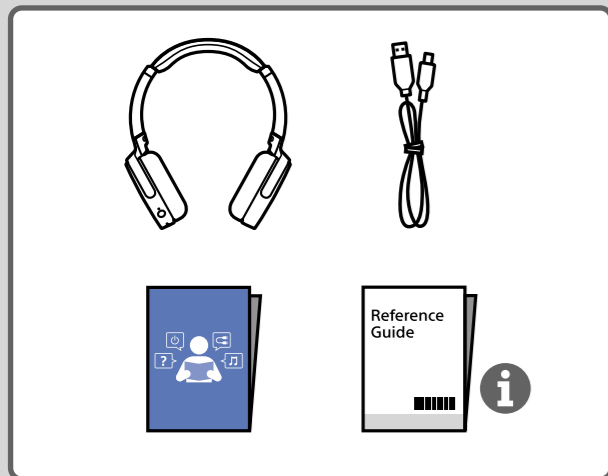
MDR-XB650BT



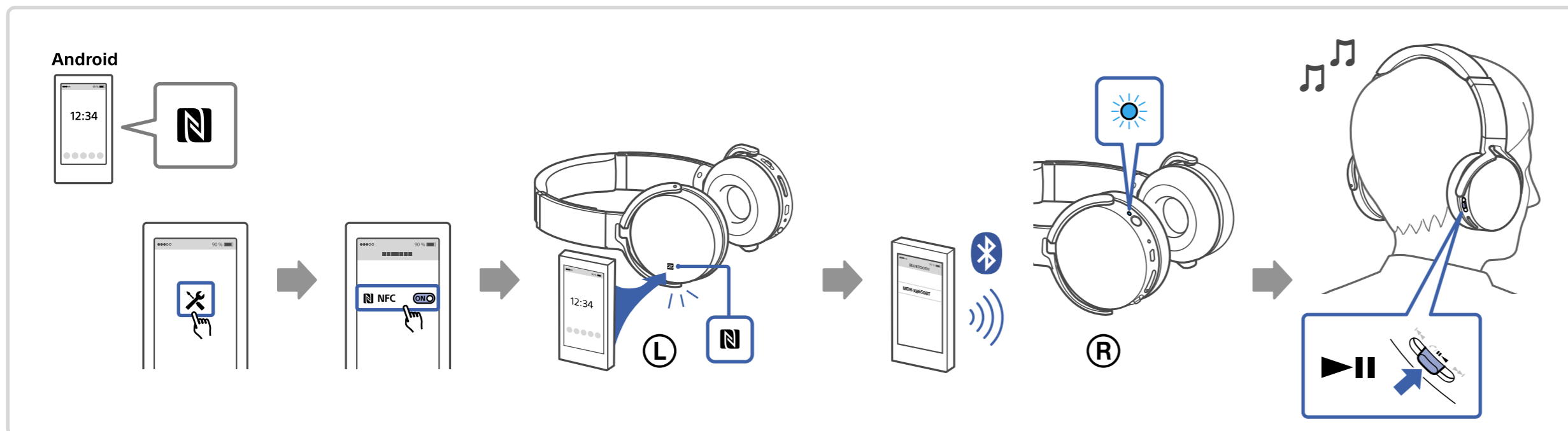
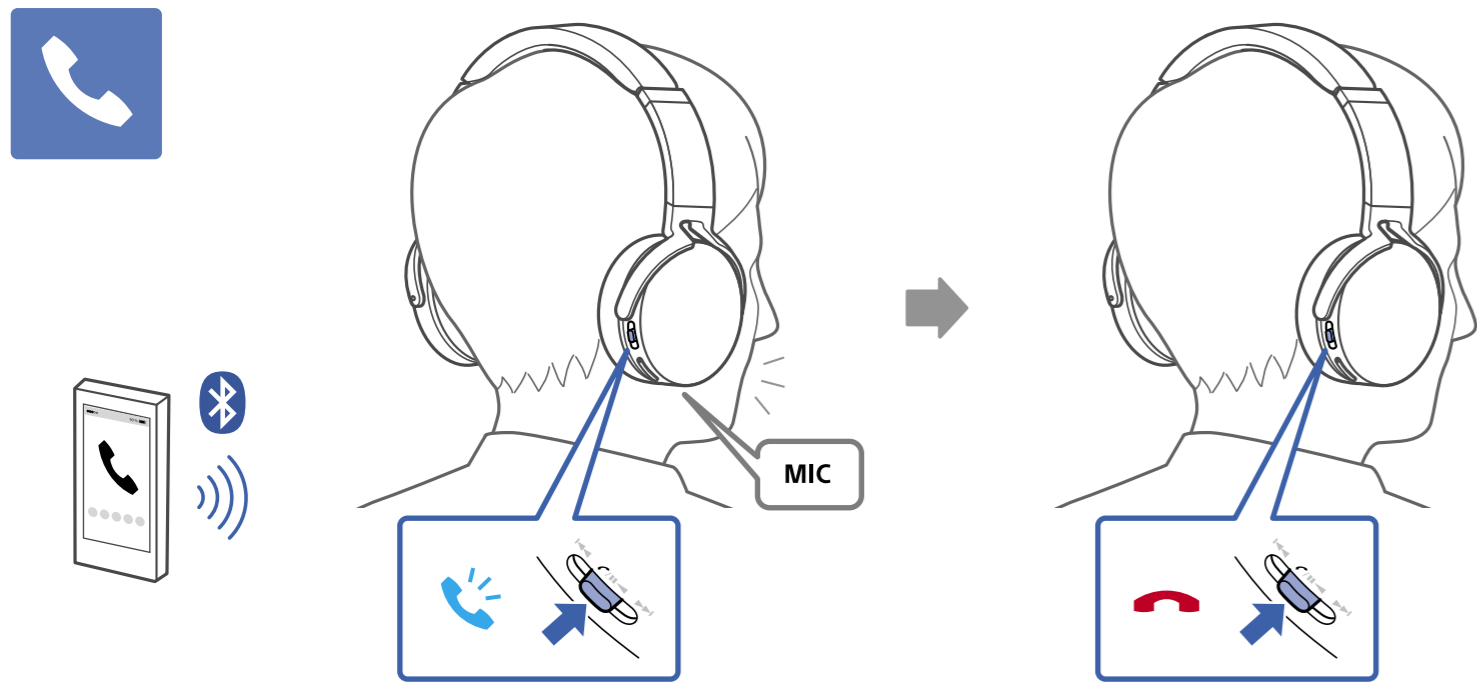
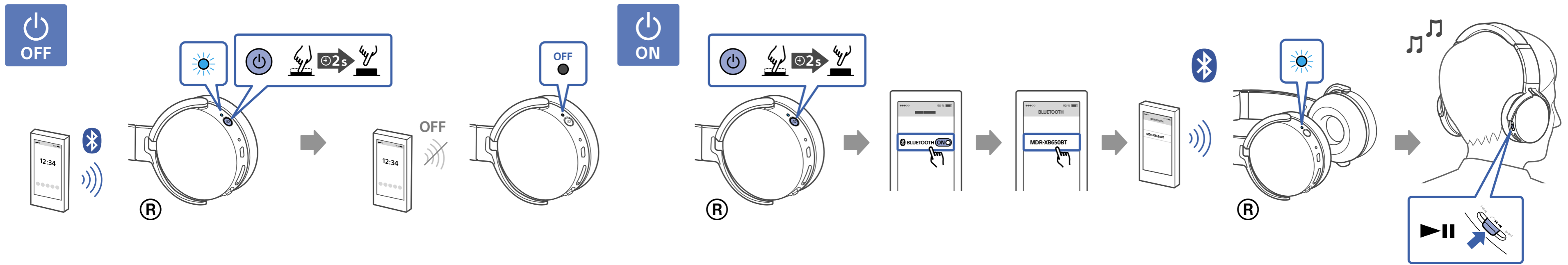
Android / iPhone



3



(R)



This information block provides additional resources for the user. It features a QR code that links to the Sony support page for the headphones. Below the QR code is the URL: http://rd1.sony.net/help/mdr/xb650bt/h_zz/. At the bottom, there are icons for a laptop and a smartphone, indicating that the support page is accessible on both devices.