

# YAMAHA ATS-1050 Quick Start Guide

## Supplied items

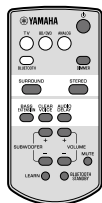
Before assembling and connecting, make sure you have received all of the following items.  
If anything is missing, please call 888-892-6242, 8AM to 5PM PST Monday through Friday.



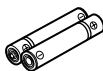
Sound bar (ATS-1050)



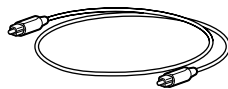
Mounting template  
(Use when attaching the sound bar to a wall.)



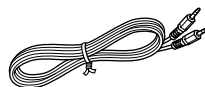
Remote control



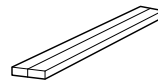
Battery  
(AAA, R03, UM4) × 2  
(Install the batteries in the remote control.)



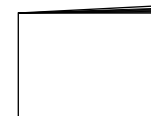
Optical cable  
1.5 m (4.9 ft)



3.5 mm stereo mini plug cable  
1.5 m (4.9 ft)



Spacer × 2  
(Use when attaching the sound bar to a wall.)



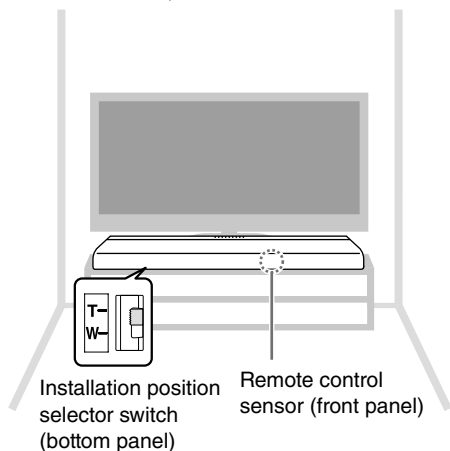
Owner's Manual



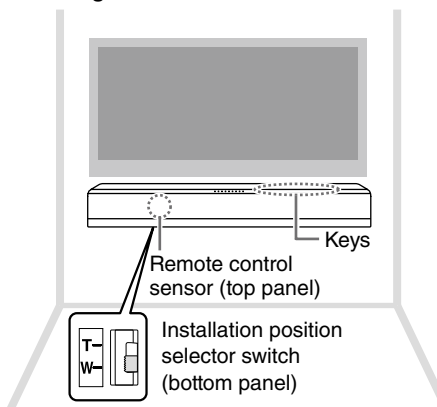
Quick Start Guide  
(This sheet)

## Placement

### On a TV cabinet, etc.



### Attaching to a wall



Place the sound bar in front of or below your TV, at least 50 mm (2") away from your TV.

The sound bar may also be attached to a wall, using the included mounting template and commercially available screws. Refer to the Owner's Manual for additional installation instructions.

Set the installation position selector switch according to the installation position of the sound bar. The sound quality appropriate to the installation position will be set.

### NOTE

- Be careful not to stack the sound bar with any other components, as vibration may cause system disruption in other components.

Continued to the reverse side



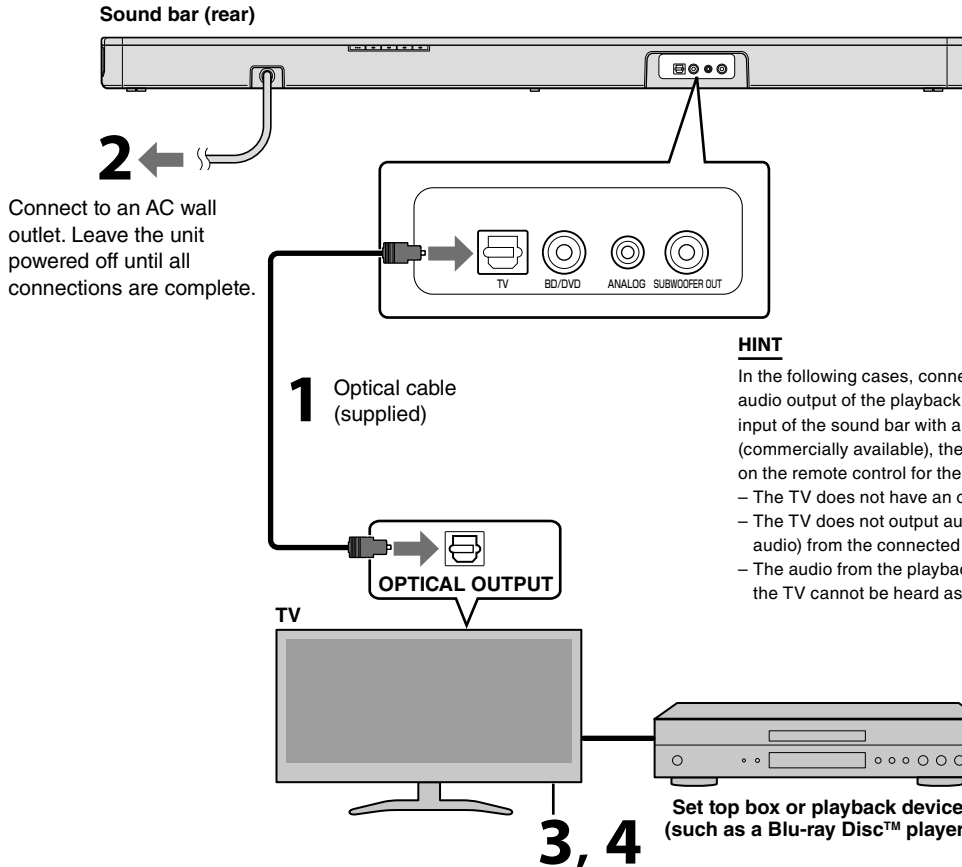
## Connections

1. **Connect the TV and sound bar with the optical cable (supplied).**

Remove the cap of the optical cable and check the direction of the plug.



2. **Connect the power cable of the sound bar to AC wall outlet.**



3. **Turn on the TV and set the volume to minimum.**

4. **Disable the TV speakers using the TV's audio settings menu (if available).**

### HINT

If a setting to disable the speaker output is not available on your TV, you may disable it by connecting headphones to the headphone jack on the TV. For details, refer to the instruction manual of the TV.

### HINT

In the following cases, connect the coaxial digital audio output of the playback device to the BD/DVD input of the sound bar with a coaxial digital cable (commercially available), then select the BD/DVD key on the remote control for the input source.

- The TV does not have an optical output.
- The TV does not output audio (or outputs low volume audio) from the connected playback device.
- The audio from the playback device connected to the TV cannot be heard as surround sound.

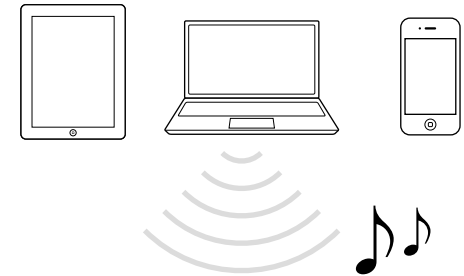
## Watching TV

For details, refer to the Owner's Manual.

1. **Press  $\odot$  to turn on the sound bar.**
2. **Press the TV key to select TV as the input source.**
3. **Select the desired input source on the TV.**
4. **Press the VOLUME (+/-) keys to adjust the volume.**

## Playback of a Bluetooth® device

You can connect a *Bluetooth* device, such as a smartphone or digital music player, with the sound bar wirelessly. For details, refer to the Owner's Manual.



## ... and more features!

For details about the other useful features, refer to the Owner's Manual.

- “HOME THEATER CONTROLLER” sound bar control app
- TV's remote control learning function
- Clear voice

The Bluetooth® word mark and logos are registered trademarks owned by Bluetooth SIG, Inc. and any use of such marks by Yamaha Corporation is under license.

Blu-ray Disc is a trademark of the Blu-ray Disc Association.